



St. Stephen's Episcopal Church

Cecil County, Maryland

1982

Photo: Charles R. Gundy

Neg: photographer, 24 Snug Harbor Way,
Earlesville, MD

NE elevation of church

1/6



OUTSIDE = Showing South Side AND PER-

St. Stephens Episcopal Church

Cecil County, Maryland

1982

Photo: Charles R. Gundy

Neg: photographer, 24 Snug Harbor Way,

Earleville, MD

NW elevation of church

2/6



St. Stephens Episcopal Church

Cecil County, Maryland

1982

Photo: Charles R. Gundy

Neg: Photographer, 24 Snug Harbor Way

Earleville, MD

SW elevation of church

3/6

LAST SUNDAY AFTER
THE EPIPHANY
54 429
139 141
261

LAST SUNDAY AFTER
THE EPIPHANY
54 429
477
139 141
261

Interior Look Right to front

St. Stephens Episcopal Church
Cecil County, Maryland
1982

Photo: Charles R. Gundy

Neg: photographer, 24 Snug Harbor Way
Earleville, MD

Interior

4/6



NORTH SASSIFRAS

✠
PATRIARCHAL JERUSALEM
⚓
MALTESE ANCHOR EASTERN
✠ ✕ ✠
LATIN ANDREWS CELTIC

ST. STEPHEN'S

INTERIOR - Looking AT front of Church.

St. Stephens Episcopal Church

Cecil County, Maryland

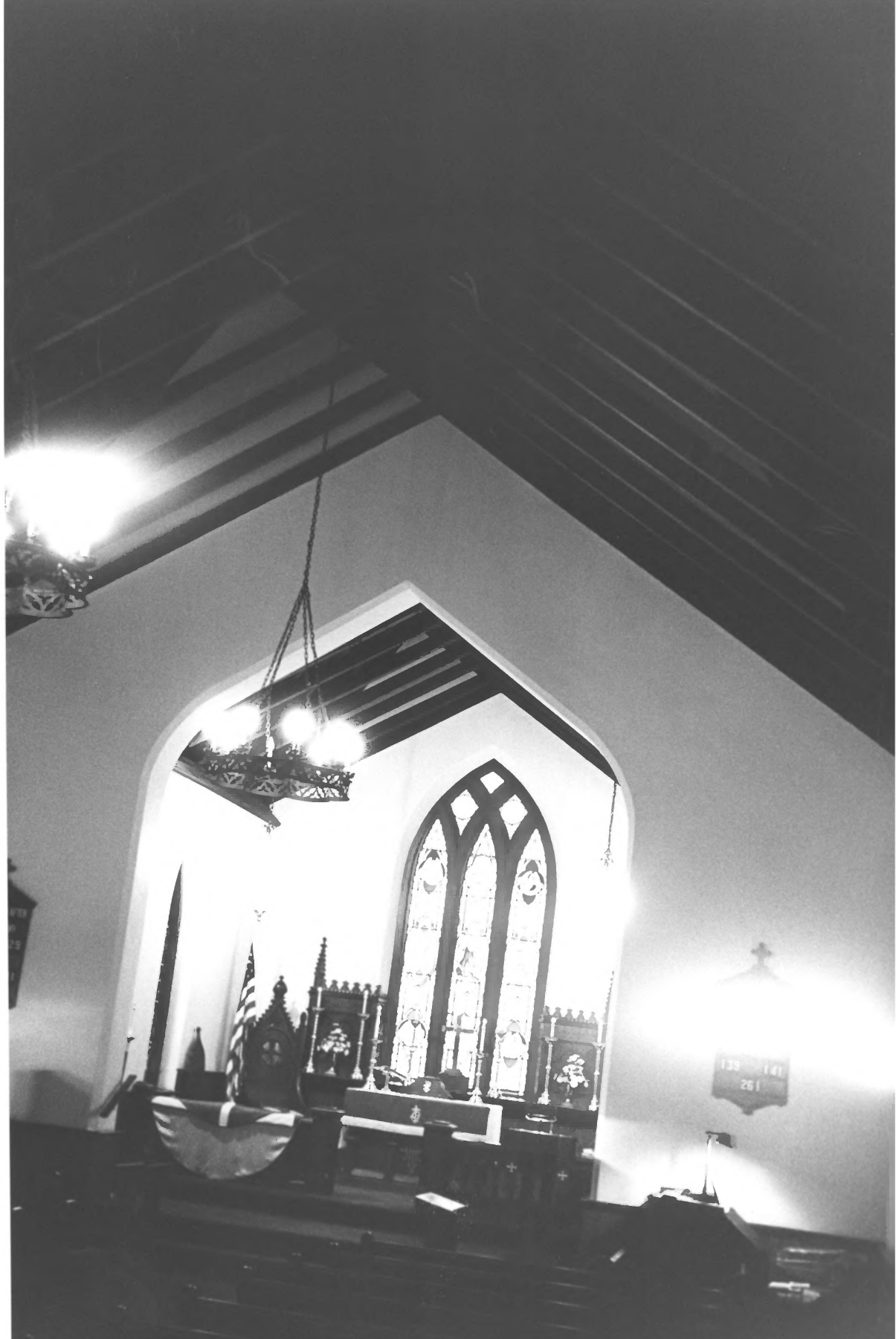
1982

Photo: Charles R. Gundy

Neg: phototographer, 24 Snug Harbor Way
Earleville, MD

Interior

5/6



St. Stephens Episcopal Church

Cecil County, Maryland

1982

Photo: Charles R. Gundy

Neg: photographer, 24 Snug Harbor Way
Earleville, MD

Interior

6/6

Interior - Look Down from 'loft' at ALTER AREA