



Stoltz House

405 S.W. 1st St.

Park City, MT. 59063

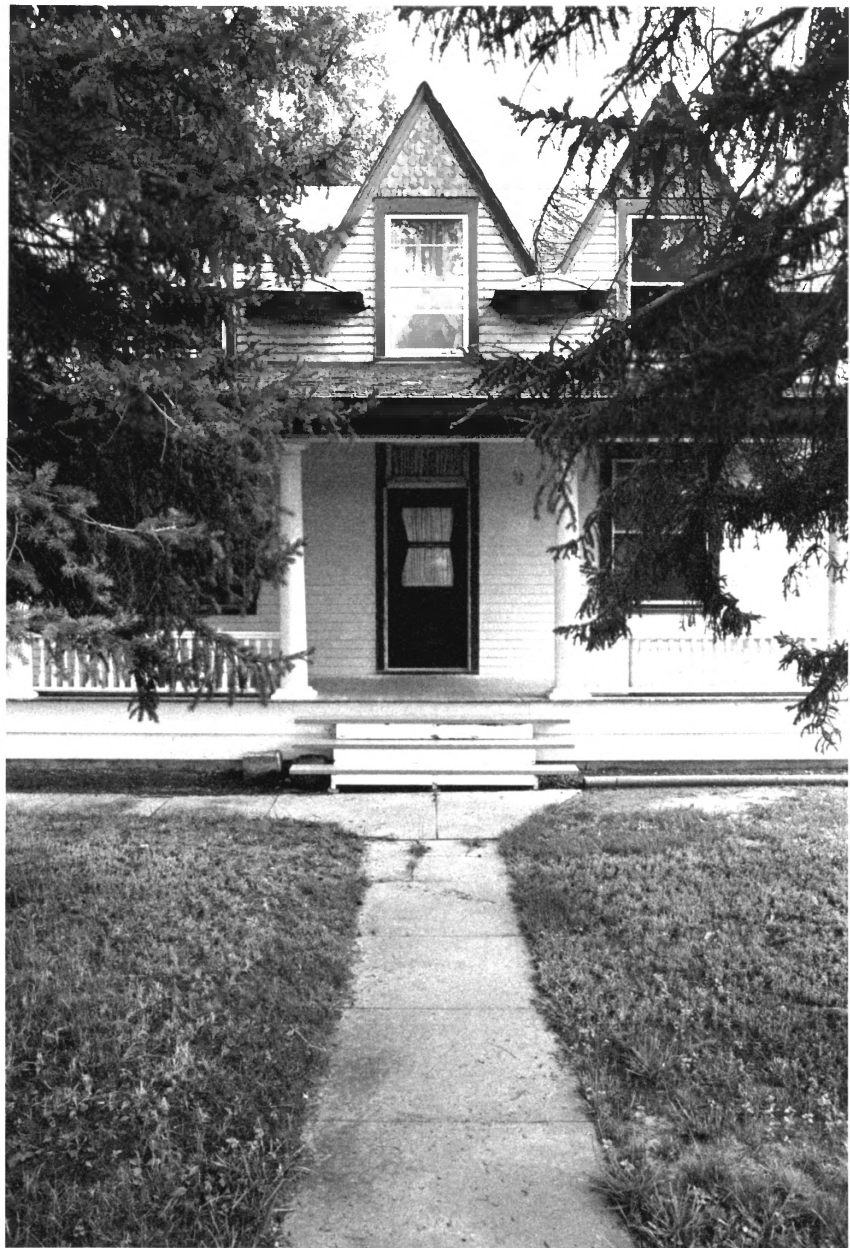
Stillwater County

Photographer - Ray Burton

Front & East Side of House

Sept. 1989

Negatives located at Stoltz House



Stoltz House

405 S.W. 1st St.

Park City, MT. 59063

Stillwater County

Photographer - Ray Burton

Front of house, North elevation

Sept. 1989

Negatives located at Stoltz House



Stoltz House

405 S.W. 1st St.

Park City, MT. 59063

Stillwater County

Photographer - Ray Burton

Back  $\frac{1}{2}$  East Side of House  
(South)

Sept. 1989

Negatives located at Stoltz House



Stoltz House

405 S.W. 1st St.

Park City, MT. 59063

Stillwater County

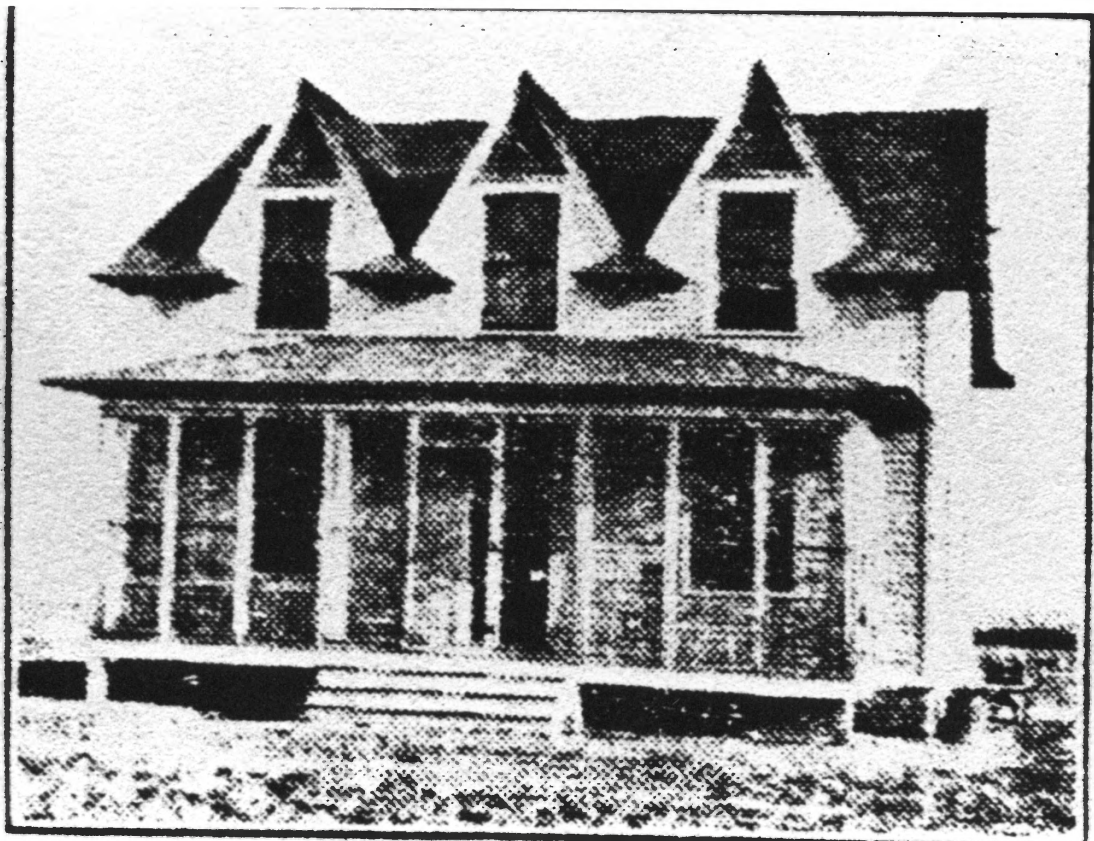
Photographer - Ray Burton

West Side of House

Sept. 1989.

Negatives located at Stoltz House





Stoltz House

Stillwater County

Photo from August 1909, Laurel Sentinel

North Elevation

Kyle Gray & Rick Foote

Rt. 1, Box 405

Park City, MT. 59063