



Oakenshaw Historic District B-5084
Baltimore, Maryland

300A, 302 University Parkway looking east
neg at MD SHPO

#1/14

Dean Wagner

5/2002
U.S. Archives



Oakenshaw Historic District B-5084
Baltimore, Maryland

300A University Parkway looking east

neg at MD SHPO

2/14

5/2002

Dean Wagner

U.B. Archives



Oakenshaw Historic District B-5084
Baltimore, Maryland

216-228 University Parkway looking west
neg at MD SHPO

#3/14

Dean Wagner

5/2002

U.B. Archives



Oakenshaw Historic District B-5084
Baltimore, Maryland

301 University Parkway looking south
neg at MD SHPO

#4/14

5/2002

Dean Wagner

U.B. Archives



Oakenshaw Historic District
Baltimore, Maryland

B-5084

323-317 University Parkway looking south
neg. at MD SHPO

#5/14

5/2002

Dean Wagner

U.B. Archives



Oaken Shaw Historic District B-5084
Baltimore, Maryland

336-350 University Parkway looking west
neg at MD SHPO

#6/14

Dean Wagner

5/2002
U.B. Archives



Oa Kenshaw Historic District 13-5084
Baltimore, Maryland

400-410 Venable Avenue looking east
neg at MD SHPO

#7/14

5/2002

Dean Wagner

U.B. Archives



Oaken Row Historic District B-5084
Baltimore, Maryland

3409-3407 Barclay Street looking east
neg at MD SHPO

8/14

Dean Wagner

5/2002
U.B. Archives



Oakenshaw Historic District B-5084
Baltimore, Maryland

401 Calvin Avenue looking east

neg at MD SHPO

#9/14

5/2002

Dean Wagner

U.B. Archives



Oaken Shaw Historic District B-5084
Baltimore, Maryland

3501, 3503 Barclay St. looking east
neg at MD SHPO

#10/14

Dean Wagner

5/2002
U.B. Archives



Oakenshaw Historical District B-5084
Baltimore, MD

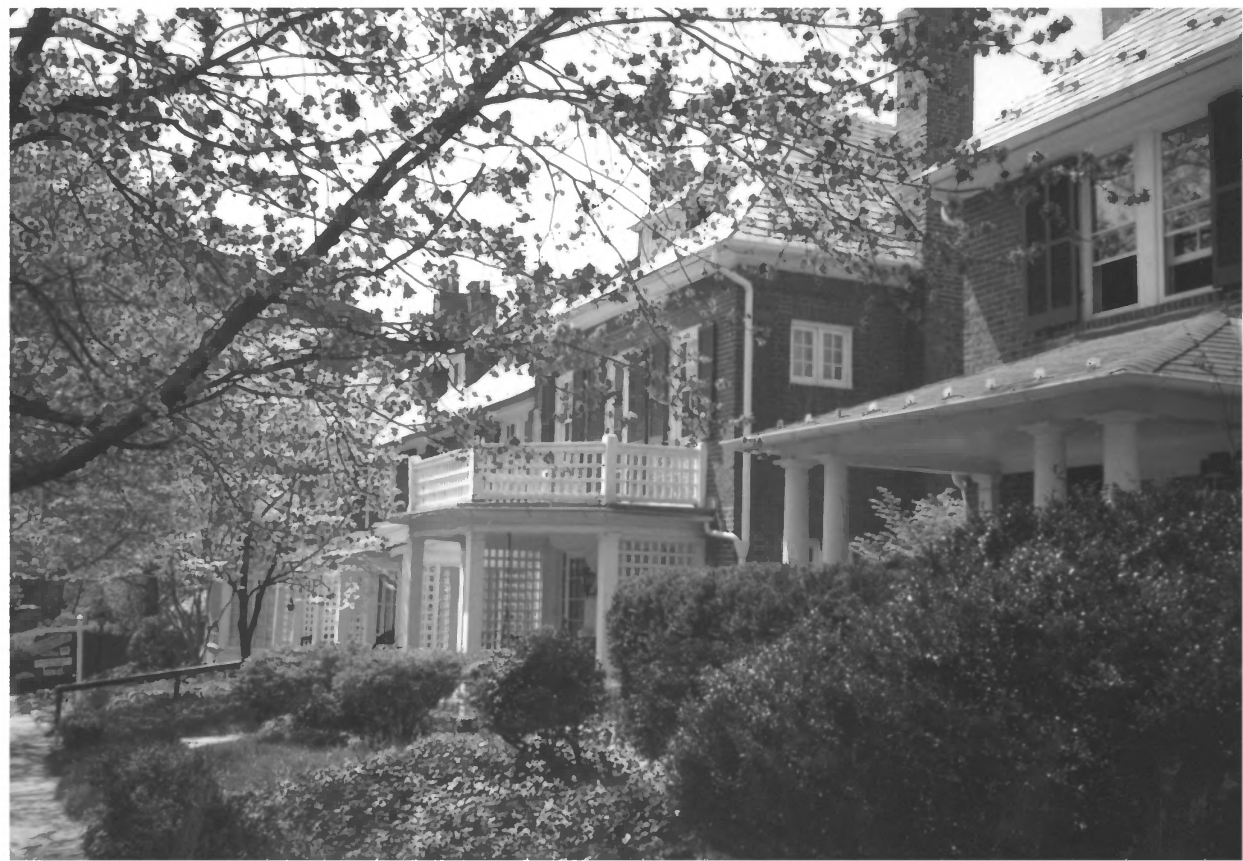
300-312 Birkwood Place looking east
neg at MD SHPO

#11 / 14

5/2002

Dean Wagner

U.B. Archives



Oakenshaw Historic District B-5084
Baltimore, Maryland

3416-3414 Guilford Terrace looking south
neg at MD SHPO

#12/14

5/2002

Dean Wagner

U.B. Archives



Oakenshaw Historic District B-5084
Baltimore, Maryland

340 through 3422 University Place looking south

neg at MDSHPD

#13/14

5/2002

Dean Wagner

U.B. Archives



NO STOPPING
2 HOUR
LOADING UNLOADING
IN AREA 2

N. CALVERT

Oakenshaw Historic District B-5084
Baltimore, MD

3517-3513 North Calvert St. looking east

neg at MD SHPO

#14/14

5/2002

Dean Wagner

U.B. Archives