



Morrison County Courthouse  
Little Falls, Minnesota  
Thomas Landvik  
1972

Minnesota Historical Society  
690 Cedar Street  
St. Paul, Minnesota 55101

Perspective view of rear from South-  
west showing 1968 annex (left) and  
1971 annex (right)

3A/0305

JUL 3 1978

DEC 5 1978

TOP  
ONLY  
THIS  
#

NOTICE: This material may be protected  
by copyright law (Title 17 U. S. Code).



Morrison County Courthouse

Little Falls, Minnesota

Thomas Landvik

DEC 5 1978

1972

Minnesota Historical Society

690 Cedar Street

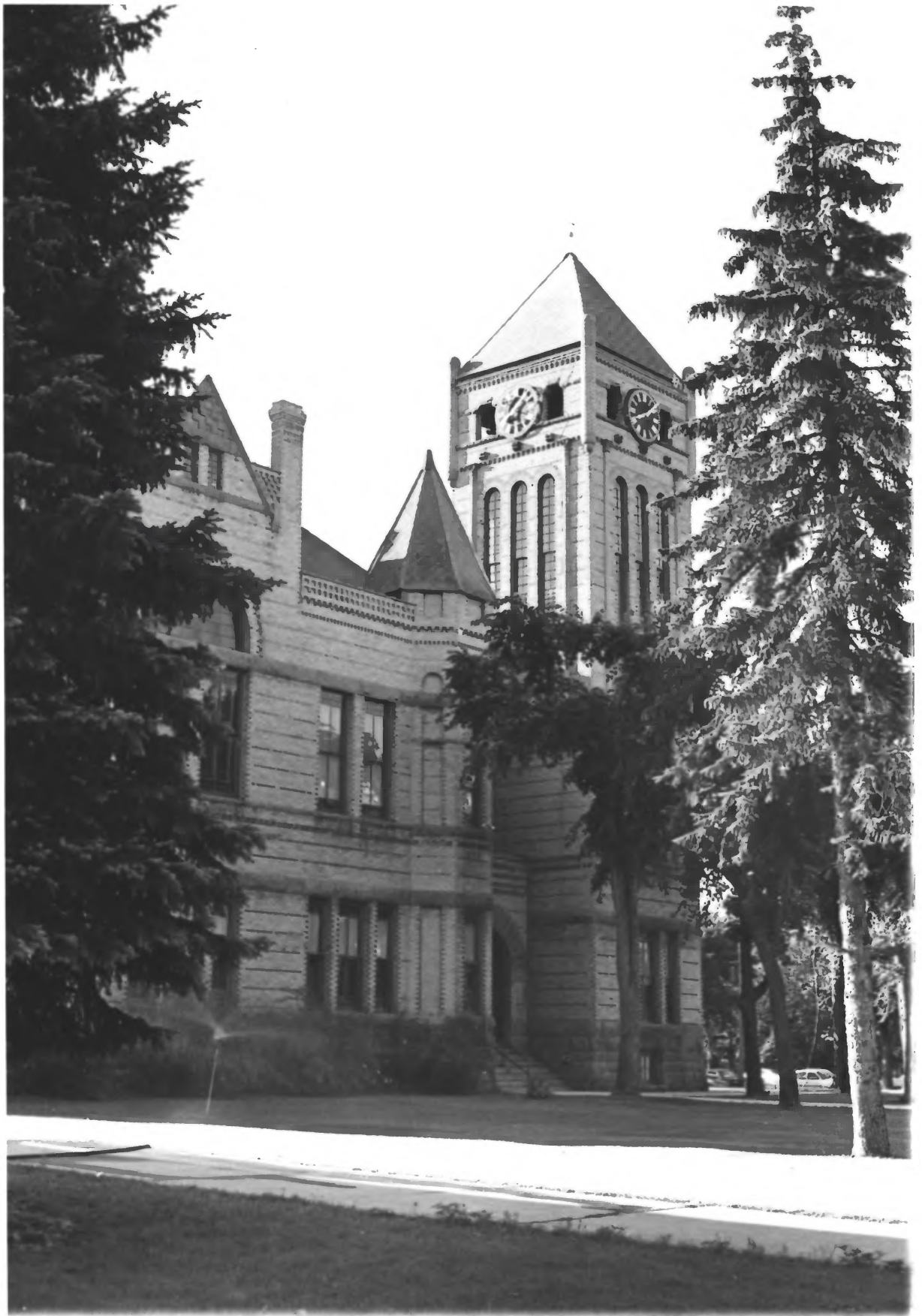
St. Paul, Minnesota 55101

South elevation

2A/0305

JUL 3 1978

NOTICE: This material may be protected  
by copyright law (Title 17 U. S. Code).



Morrison County Courthouse  
Little Falls, Minnesota  
Thomas Landvik  
1972

DEC 5 1978

Minnesota Historical Society  
690 Cedar Street  
St. Paul, Minnesota 55101

Perspective view from Northeast  
showing principal entry to left  
of tower  
7A/0305

JUL 3 1978

NOTICE: This material may be protected  
by copyright law (Title 17 U. S. Code).

FROM THE COLLECTIONS OF THE  
MINNESOTA HISTORICAL SOCIETY  
THIS PHOTOGRAPH IS FOR REFERENCE USE  
ONLY. IT MAY NOT BE REPRODUCED OR  
SOLD WITHOUT WRITTEN PERMISSION.





Morrison County Courthouse

Little Falls, Minnesota

Thomas Landvik  
1972

DEC 5 1978

Minnesota Historical Society

690 Cedar Street

St. Paul, Minnesota 55101

Detail of glass concourse to annexes  
to north of main structure

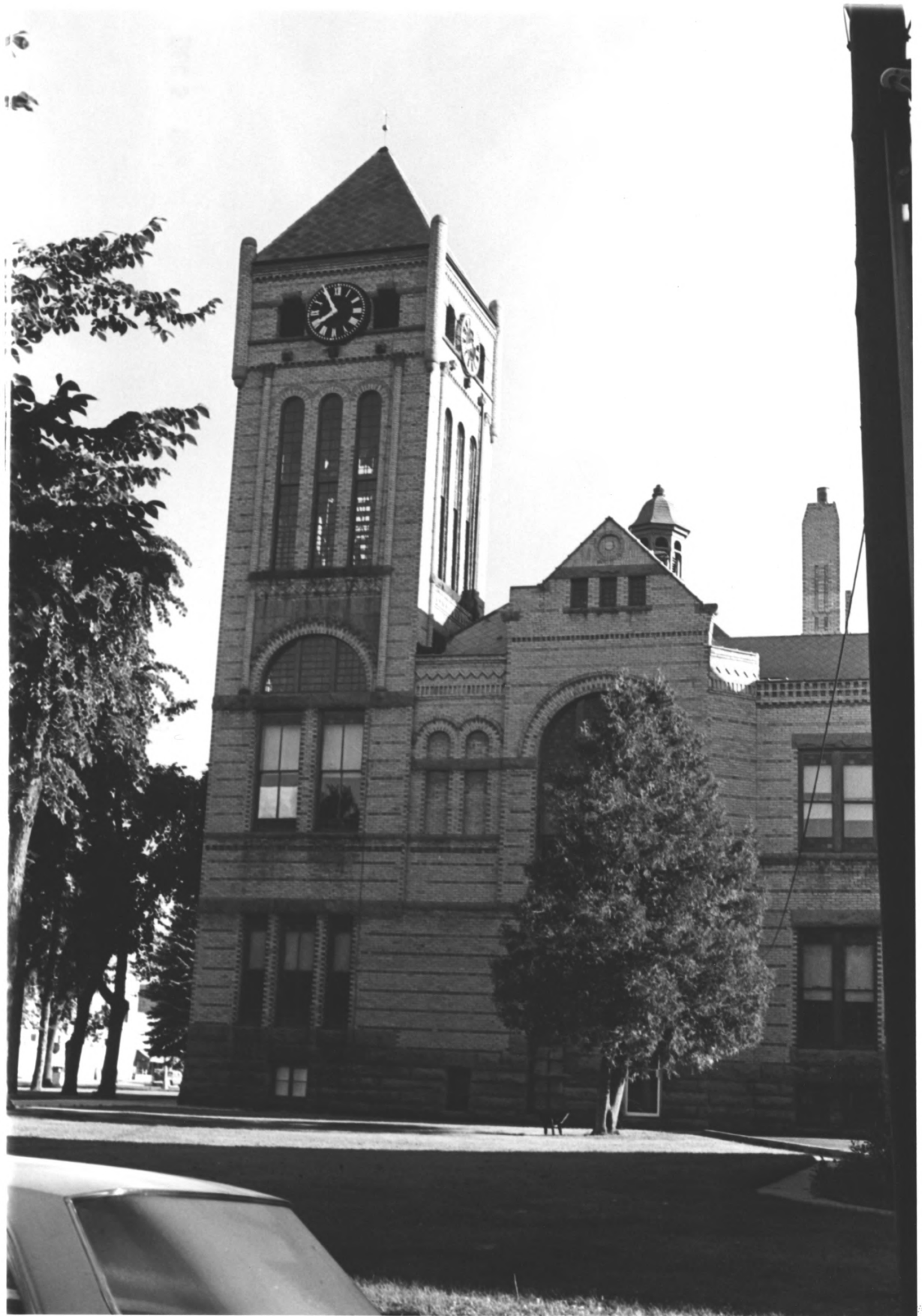
6A/0305

JUL 3 1978

MINNESOTA  
FROM THE  
THIS PROJECT  
ONLY IT  
SOLD WITH

NOTICE: This material may be protected  
by copyright law (Title 17 U. S. Code).





Morrison County Courthouse  
Little Falls, Minnesota  
Thomas Landvik  
1972

Minnesota Historical Society  
690 Cedar Street  
St. Paul, Minnesota 55101  
Detail of Tower/south elevation  
1A/0305

JUL 3 1978

DEC 5 1978

NOTICE: This material may be protected  
by copyright law (Title 17 U. S. Code).