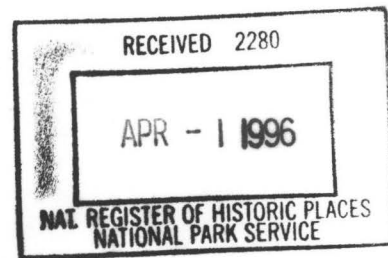


United States Department of the Interior  
National Park Service

NATIONAL REGISTER OF HISTORIC PLACES  
REGISTRATION FORM



=====

1. Name of Property

=====

historic name: Camp Nelson Confederate Cemetery

other name/site number: LN0014

=====

2. Location

=====

street & number: Rye Street

not for publication: N/A

city/town: Cabot

vicinity: N/A

state: AR county: Lonoke code: AR 085 zip code: 72086

=====

3. Classification

=====

Ownership of Property: Public-local

Category of Property: Object

Number of Resources within Property:

Contributing	Noncontributing
--------------	-----------------

<u>      </u>	<u>      </u>	buildings
<u>      </u>	<u>      </u>	sites
<u>      </u>	<u>      </u>	structures
<u>  1  </u>	<u> 432 </u>	objects
<u>  1  </u>	<u> 432 </u>	Total

Number of contributing resources previously listed in the National Register: N/A

Name of related multiple property listing: "Something So Dim It Must Be Holy:" Civil War Commemorative Sculpture in Arkansas, 1886-1934

=====

#### 4. State/Federal Agency Certification

=====

As the designated authority under the National Historic Preservation Act of 1986, as amended, I hereby certify that this X nomination \_\_\_\_\_ request for determination of eligibility meets the documentation standards for registering properties in the National Register of Historic Places and meets the procedural and professional requirements set forth in 36 CFR Part 60. In my opinion, the property X meets \_\_\_\_\_ does not meet the National Register Criteria. \_\_\_\_\_ See continuation sheet.

Cathryn A. Slater  
Signature of certifying official

3-19-96  
Date

Arkansas Historic Preservation Program  
State or Federal agency and bureau

In my opinion, the property X meets \_\_\_\_\_ does not meet the National Register criteria. \_\_\_\_\_ See continuation sheet.

\_\_\_\_\_  
Signature of commenting or other official

\_\_\_\_\_  
Date

\_\_\_\_\_  
State or Federal agency and bureau

=====

#### 5. National Park Service Certification

=====

I, hereby certify that this property is:

\_\_\_\_ entered in the National Register

\_\_\_\_ See continuation sheet.

\_\_\_\_ determined eligible for the  
National Register

\_\_\_\_ See continuation sheet.

\_\_\_\_ determined not eligible for the  
National Register

\_\_\_\_ removed from the National Register

\_\_\_\_ other (explain): \_\_\_\_\_

\_\_\_\_\_  
Signature of Keeper

\_\_\_\_\_  
Date  
of Action

=====

#### 6. Function or Use

=====

Historic: RECREATION AND CULTURE  
FUNERARY

Sub: Monument/marker  
Cemetery

Current: RECREATION AND CULTURE  
FUNERARY

Sub: Monument/marker  
Cemetery

=====

## 7. Description

=====

Architectural Classification:

Other \_\_\_\_\_  
\_\_\_\_\_  
\_\_\_\_\_

Other Description: Ashlar-faced limestone

Materials:	foundation	<u>STONE/Limestone</u>	roof	<u>N/A</u>
	walls	<u>STONE/Limestone</u>	other	_____

Describe present and historic physical appearance. \_\_\_\_\_ See continuation sheet.

\_\_\_\_\_

### Summary

The Camp Nelson Confederate Cemetery is located on Rye Street in the Cabot vicinity, Lonoke County. It is surrounded by a chain-link fence that is 292' feet wide on the south, or entrance, side, 145' on the west side, 285' on the north side, and 149' on the east side. Its main feature is an obelisk-like monument resting on a base. Both parts are rusticated with the exception of a smoothed panel on the front of the monument, which contains an inscription. The base, made of limestone (Batesville marble), is 3'4"x4'9"x4'4". The monument, also made of limestone, stands 8'6"x2'4"x2'x4". There are 429 grave markers and three flagpoles within the cemetery.

### Elaboration

The Camp Nelson Confederate Cemetery is located on Rye Street in the Cabot vicinity, Lonoke County. It is surrounded by a chain-link fence that is 292' feet wide on the south, or entrance, side, 145' on the west side, 285' on the north side, and 149' on the east side. Its main feature is an obelisk-like monument resting on a base. Both parts are rusticated with the exception of a smoothed panel on the front of the monument, which contains an inscription. The base, made of limestone (Batesville marble), is 3'4"x4'9"x4'4". The monument, also made of limestone, stands 8'6"x2'4"x2'x4".

The entry gate the cemetery, which is secured by two swinging gates that meet in the center, is 12' wide. Tall iron poles on either side are bridged by a gray metal sign reading CAMP NELSON/CONFEDERATE CEMETERY. A concrete sidewalk proceeds from the entry for 18 feet and the monument rests on the flared end of the sidewalk. Three flagpoles are embedded behind the monument.

Inscribed on the front of the monument is "CAMP NELSON / CONFEDERATE / CEMETERY / IN MEMORY OF / UNKNOWN TEXAS / AND ARKANSAS / CONFEDERATE / SOLDIERS. / ACT OF / LEGISLATURE / APPROVED / MAY 11, 1905 / THEO, J. YOUNG / WILLIAM F. GIBSON / AND / GRANDISON APPLE. / TRUSTEES." On top of the upper front base slab is written "CONFEDERATES."

A commemorative plaque outlining the history of Camp Nelson stands at the entrance to the cemetery.

Both the base and the sculpture suffer from black crusts and organic growth. The base is slightly cracked, and graffiti is carved into the front of the sculpture and the base. Generally, the Camp Nelson Confederate Cemetery and monument are well-maintained and easily accessible.

There are 429 low marble grave markers within the cemetery. Each is inscribed with a cross in a circle at the top and the words UNKNOWN/SOLDIER/CSA below. They are ranged on the west side of the monument in six rows 15 deep flanking the sidewalk with a space of several yards before the next grouping of six rows 15 deep. They are mirrored on the east side of the monument, with the exception that the grave markers are 18 deep on that side.

The cemetery is well maintained.

=====

**8. Statement of Significance**

=====

Certifying official has considered the significance of this property in relation to other properties: Statewide.

Applicable National Register Criteria: A

Criteria Considerations (Exceptions): F

Areas of Significance: SOCIAL HISTORY  
\_\_\_\_\_  
\_\_\_\_\_  
\_\_\_\_\_  
\_\_\_\_\_

Period(s) of Significance: 1897-1906

Significant Dates: 1897-1906

Significant Person(s): N/A  
\_\_\_\_\_

Cultural Affiliation: N/A

Architect/Builder: Unknown  
\_\_\_\_\_  
\_\_\_\_\_

State significance of property, and justify criteria, criteria considerations, and areas and periods of significance noted above.  
\_\_\_ See continuation sheet.

---

**Summary**                      Criterion A, statewide significance  
                                    Criterion Consideration F

The Camp Nelson Confederate Cemetery is associated with the historic context **"Something So Dim It Must Be Holy": Civil War Commemorative Sculpture in Arkansas, 1886-1934** as a commemorative monument financed and erected through the efforts of a veterans' organization in Arkansas. As such, it is eligible under Criterion A with statewide significance for its associations with the efforts of the James Adams Camp 1036 of United Confederate Veterans to

reflect members' perception of the noble character and valor of their veterans and their cause. Thus, it also meets the eligibility requirements of Criteria Consideration F: Commemorative Properties.

## **Elaboration**

Gen. Allison Nelson's Texas and Arkansas troops came to Arkansas in June 1862 and set up camp at a location four miles south of Austin and three miles east of Cabot. This soon became an important gathering spot for Confederate troops, and at one point 10,000 Rebels were stationed in the area. However, a measles epidemic struck the camp and killed more than 500 of Nelson's men. Since there was no official graveyard nearby, the bodies were buried in various locations around the town of Old Austin.

In 1897 the James Adams Camp 1036 of the United Confederate Veterans took an interest in Camp Nelson and decided to assemble the scattered graves in one spot. The remains of the troops were gathered and placed in long, deep furrows that had been plowed in the ground. The owner of what had once been Camp Nelson, a farmer and ex-Confederate soldier named James M. Gately, donated the property to the U.C.V. so it could become one of only two official Confederate cemeteries (along with Prairie Grove) in the state. In 1905 the state legislature appropriated \$1,000 to be used in beautifying the crude graveyard. With this money the U.C.V. cleared the grounds, erected a wire fence, added granite headstones, and built a monument to the soldiers who had lost their lives there. The monument and cemetery were dedicated on October 4, 1906. U.C.V. members T. J. Young, W. F. Gibson, and Grandison Apple were in charge of Camp Nelson's restoration.

Due to its remote, isolated location, the cemetery was neglected and fell into disrepair within a few years of its dedication in 1906. Periodic attempts throughout the century to restore the area were largely unsuccessful until 1981, when the efforts of Cabot citizens such as Joy Isaac, Charles George, and Rep. W. F. (Bill) Foster convinced the state legislature to appropriate \$22,000 to clean up the dilapidated graveyard. This legislation, known as 1981 House Bill 873, was introduced by Foster and provided the funds for a new sidewalk, parking lot, commemorative plaque, water fountain, picnic table, topsoil, toilet, and fence for the cemetery. At that time the U. S. Veterans Administration contributed 429 grave markers reading "Unknown Confederate Soldier" to replace the decrepit originals.

The Camp Nelson Confederate Cemetery is associated with the historic context **"Something So Dim It Must Be Holy": Civil War Commemorative Sculpture in Arkansas, 1886-1934** as a commemorative monument financed and erected through the efforts of a veterans' organization in Arkansas. As such, it is eligible under Criterion A with statewide significance for its associations with the efforts of the James Adams Camp 1036 of United Confederate Veterans to reflect members' perception of the noble character and valor of their veterans and their cause. Thus, it also meets the eligibility requirements of Criteria Consideration F: Commemorative Properties.

## **9. Major Bibliographical References**

"Confederate Monuments and Markers in Arkansas," Arkansas Division U.D.C., 1960, p. 187.

Arkansas Democrat, April 29, 1962, magazine section, p. 3.

Arkansas Gazette, May 16, 1911, p. 10.

Cabot Star-Herald, January 30, 1981, p. 1.

Cabot Star-Herald, February 6, 1981, p. 1.

Cabot Star-Herald, February 27, 1981, p. 1.

Cabot Star-Herald, March 20, 1981, p. 1.1

\_\_\_ See continuation sheet.

Previous documentation on file (NPS):

- preliminary determination of individual listing (36 CFR 67) has been requested.
- previously listed in the National Register
- previously determined eligible by the National Register
- designated a National Historic Landmark
- recorded by Historic American Buildings Survey # \_\_\_\_\_
- recorded by Historic American Engineering Record # \_\_\_\_\_

Primary Location of Additional Data:

- X State historic preservation office
- Other state agency
- Federal agency
- Local government
- University
- Other -- Specify Repository: \_\_\_\_\_

=====

### 10. Geographical Data

=====

Acreage of Property: Less than one

UTM References:	Zone	Easting	Northing	Zone	Easting	Northing
A	<u>15</u>	<u>593120</u>	<u>3867340</u>	B	<u>15</u>	_____
C	<u>15</u>	_____	_____	D	<u>15</u>	_____

\_\_\_ See continuation sheet.

Verbal Boundary Description: \_\_\_ See continuation sheet.

The exterior boundary of the roughly 292' by 149' fenced rectangle within which lie the monument itself and the associated Confederate burials.

Boundary Justification: \_\_\_ See continuation sheet.

This boundary includes all the property historically associated with this resource.

=====

**11. Form Prepared By**

=====

Name/Title: John Slater, Special Projects Intern/AHPP Staff

Organization: Arkansas Historic Preservation Program Date: 03/13/96

Street & Number: 323 Center Street, Suite 1500 Telephone: (501) 324-9880

City or Town: Little Rock State: AR Zip: 72201

United States Department of the Interior  
National Park Service

National Register of Historic Places  
Continuation Sheet

Section number \_\_\_\_\_ Page \_\_\_\_\_

SUPPLEMENTARY LISTING RECORD

NRIS Reference Number: 96000503

Date Listed: 5/3/96

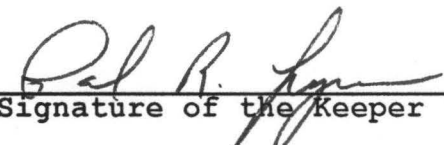
Camp Nelson Confederate Cemetery  
Property Name

Lonoke  
County

AR  
State

Civil War Commemorative Sculpture MPS  
Multiple Name

-----  
This property is listed in the National Register of Historic Places in accordance with the attached nomination documentation subject to the following exceptions, exclusions, or amendments, notwithstanding the National Park Service certification included in the nomination documentation.

  
Signature of the Keeper

5/3/96  
Date of Action

=====  
Amended Items in Nomination:

Period of Significance:

The period of significance is revised to read: 1906.

[This refers to the date of erection for the commemorative monument which is the basis for the MPS context.]

This was confrimed with Ken Story of the Arkansas SHPO.

DISTRIBUTION:

National Register property file

Nominating Authority (without nomination attachment)

UNITED STATES DEPARTMENT OF THE INTERIOR  
NATIONAL PARK SERVICE

NATIONAL REGISTER OF HISTORIC PLACES  
EVALUATION/RETURN SHEET

REQUESTED ACTION: NOMINATION

PROPERTY Camp Nelson Confederate Cemetery  
NAME:

MULTIPLE  
NAME:

STATE & COUNTY: ARKANSAS, Lonoke

DATE RECEIVED: 4/01/96 DATE OF PENDING LIST: 4/16/96  
DATE OF 16TH DAY: 5/02/96 DATE OF 45TH DAY: 5/16/96  
DATE OF WEEKLY LIST:

REFERENCE NUMBER: 9600050~~9~~3

NOMINATOR: STATE

REASONS FOR REVIEW:

APPEAL: N DATA PROBLEM: N LANDSCAPE: N LESS THAN 50 YEARS: N  
OTHER: Y PDIL: N PERIOD: N PROGRAM UNAPPROVED: N  
REQUEST: N SAMPLE: N SLR DRAFT: Y NATIONAL: N

COMMENT WAIVER: N

\_\_\_ACCEPT \_\_\_RETURN \_\_\_REJECT\_\_\_DATE

ABSTRACT/SUMMARY COMMENTS:

The Camp Nelson Confederate Cemetery is eligible under National Register Criterion A as a representation of the significant and enduring role of commemorative activities (associated with the important social and political themes of remembrance and recovery) in the post-Civil War South. The statue meets the registration requirements set forth in the MPS cover document.

RECOM./CRITERIA Accept A

REVIEWER Paul R. Lusignan DISCIPLINE HISTORIAN

TELEPHONE \_\_\_\_\_ DATE 5/3/96

DOCUMENTATION see attached comments Y/N see attached SLR (Y)N



Camp Nelson Confederate Cemetery

~~CABOT~~ vic., Lonoke County, Arkansas

Photo by Helen Barry

July 1995

Negative on file at NHP

View from Southeast



CAMP NELSON  
CONFEDERATE  
CEMETERY  
IN MEMORY OF  
UNKNOWN TEXAS  
AND ARKANSAS  
CONFEDERATE  
SOLDIERS.  
ACT OF  
LEGISLATURE  
APPROVED  
MAY 11, 1905.  
THEO. J. YOUNG  
WILLIAM F. GIBSON  
AND  
GRANDISON APPLE.  
TRUSTEES.

Camp Nelson Confederate Cemetery  
Cabot vic., Lonoke Co., Arkansas  
Photo by Helen Barry

July 1995  
Negative on file at AHPP  
View of monument from South

CAMP NELSON  
CONFEDERATE  
CEMETERY  
IN MEMORY OF  
UNKNOWN TEXAS  
AND ARKANSAS  
CONFEDERATE  
SOLDIERS.

ACT OF  
LEGISLATURE  
APPROVED  
MAY 11, 1905  
THEO. J. YOUNG  
WILLIAM F. GIBSON  
AND  
GRANDISON APPLE.  
TRUSTEES.

Camp Nelson Confederate Cemetery  
Carbot Vic., Lonoke Co., Arkansas  
Photo by Helen Barry

July 1995

Negative on file at NHPP  
monument detail



Camp Nelson Confederate Cemetery  
Corbett vic., Lonoke Co., Arkansas

Photo By Rusty Lotan

July 1995

Negative on file at AHPP

view from East



Camp Nelson Confederate Cemetery  
CABOT vic., Lonoke Co., ARKANSAS

Photo by Helen Barry

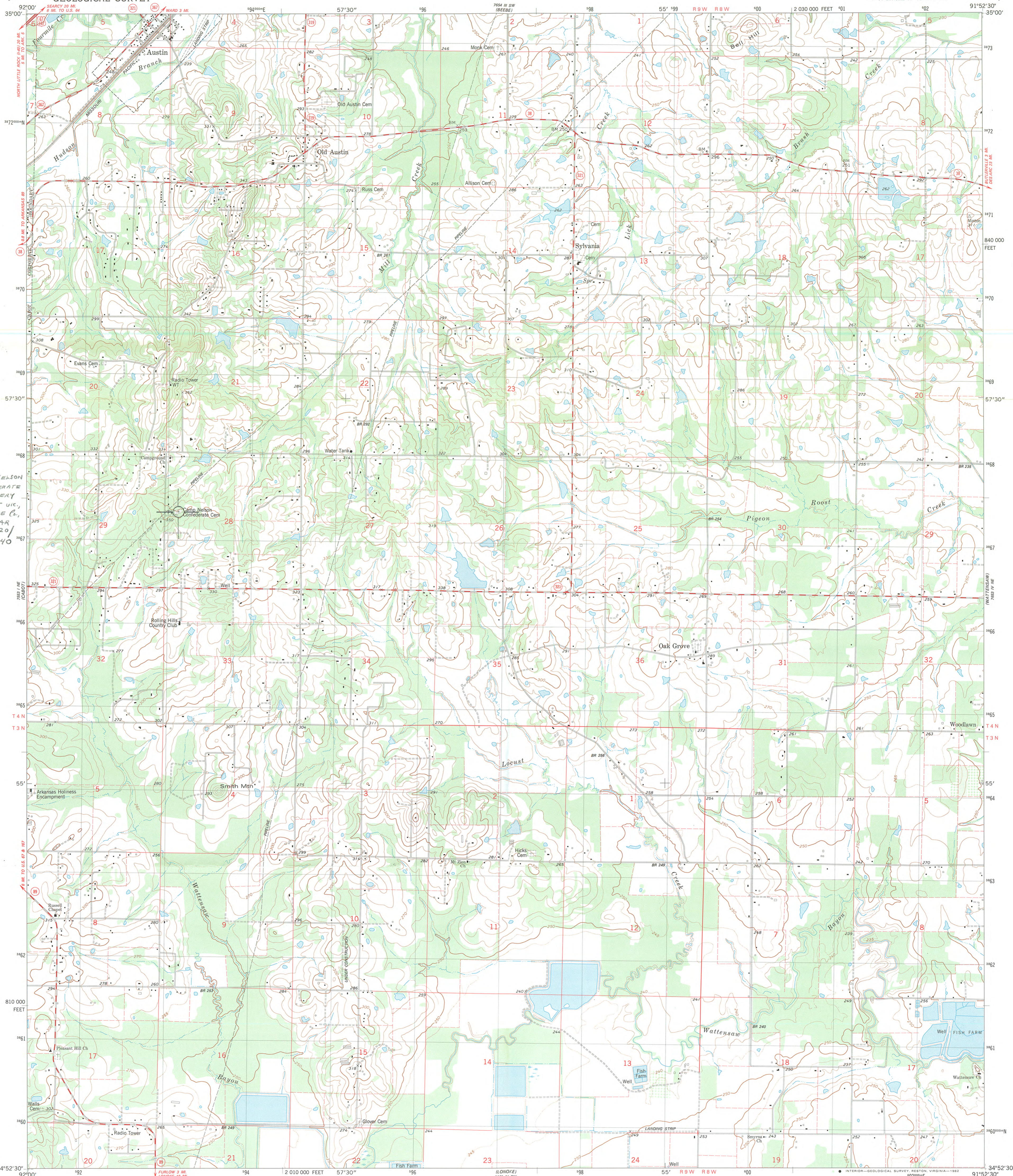
July 1995

Negative on file at AHPP

view from South

UNITED STATES  
DEPARTMENT OF THE INTERIOR  
GEOLOGICAL SURVEY

OAK GROVE QUADRANGLE  
ARKANSAS—LONOKE CO.  
7.5 MINUTE SERIES (TOPOGRAPHIC)  
NW/4 LONOKE 15' QUADRANGLE



CAMP NELSON  
CONFEDERATE  
CEMETERY  
CABOT VIC,  
LONOKE CO.,  
AR  
15/593120/  
3867340

Mapped, edited, and published by the Geological Survey

Control by USGS and NOS/NOAA

Topography by photogrammetric methods from aerial photographs  
taken 1975. Field checked 1977. Map edited 1982

Projection and 10,000-foot grid ticks: Arkansas coordinate  
system, south zone (Lambert conformal conic)

1000-meter Universal Transverse Mercator grid, zone 15

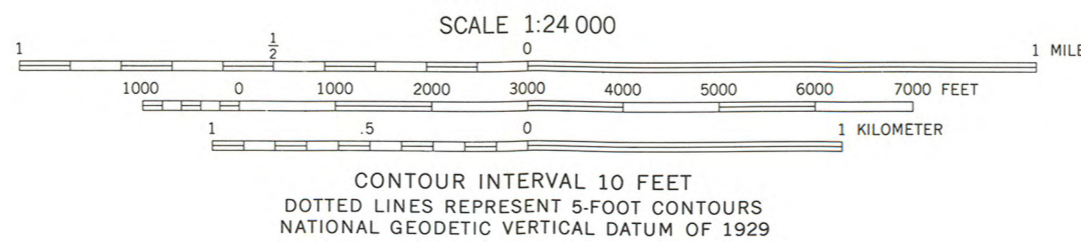
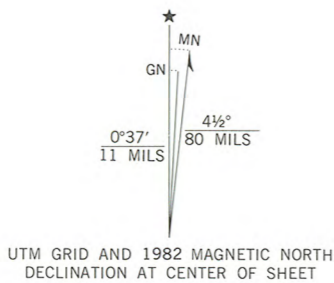
1927 North American Datum

To place on the predicted North American Datum 1983

move the projection lines 7 meters south and

13 meters east as shown by dashed corner ticks

Fine red dashed lines indicate selected fence and field lines where  
generally visible on aerial photographs. This information is unchecked



ROAD CLASSIFICATION	
Primary highway, hard surface	Light-duty road, hard or improved surface
Secondary highway, hard surface	Unimproved road
Interstate Route	U. S. Route
	State Route



OAK GROVE, ARK.  
NW/4 LONOKE 15' QUADRANGLE  
N3452.5-W9152.5/7.5

1982

DMA 7653 IV NW-SERIES V884