



Russellville Historic District
Russellville, Kentucky, Logan County
Robert Stuart, 1973, News-Democrat
and Logan Leader office, 120 Public
Square, Russellville, Kentucky

Photo 1. of 75

Photo taken from the southwest
showing the City or Public Park
(original courthouse square) (#1)

Main Street forms the far side of the
park as shown here; east 4th Street
is seen at the right.

JUN 14 1976

JUL 14 1976



Pussellville Historic District
Russellville, Kentucky, Logan County
Robert Stuart, 1975, News-Democrat
and Logan Leader office, 120 Public
Square, Russellville, Kentucky

Photo 2. of 75

Photo taken from the south showing
the old courthouse square (#1). West
4th Street is at the far left.

JUL 14 1976

JUN 14 1976



THE CULTURAL MUSEUM

DUNCAN'S DRUG STORE

DUNCAN'S MUSIC

RILEY

LIBRARY

Russellville Historic District
Russellville, Kentucky, Logan County
Robert Stuart, 1975, News-Democrat
and Logan Leader office, 120 Public
Square, Russellville, Kentucky

Photo 3.

Photo taken from the southwest showing
the fountain and monuments located in
the old courthouse square. The

Confederate Soldier Monument in at
the left.

JUN 14 1976

JUL 14 1976



LOGAN COUNTY
HARDWARE & FURNITURE
COMPANY

PILLOW BROS.
PLUMBING HEATING SHEET METAL

HICKEY STOVALLS
TV-APPLIANCES-FURNITURE

68 79
431 80

Russellville Historic District
Russellville, Kentucky, Logan County
Robert Stuart, 1975, News-Democrat
and Logan Leader office, 120 Public

Square, Russellville, Kentucky

Photo 4.

Photo taken from the west showing
the Public Park (#1) on the left in
the foreground, and the commercial

buildings (#2) on the east side of
South Main Street (compare with
photo 13, taken in 1910).

JUN 14 1976

JUL 14 1976



SOUTHERN DEPOSIT BANK

Helen's
DRESS SHOP

Royaltone
STUDIO

Humphries
Jewelry

LOGAN COUNTY
HARDWARE & FURNITURE
COMPANY

BOOK-RECORD
TAPE SHOP

SPEED GREEN
STERN
TUCKY
GAS



www.woolhouse.com

Russellville Historic District
Russellville, Kentucky, Logan County
Robert Stuart, 1975, News-Democrat
and Logan Leader office, 120 Public
Square, Russellville, Kentucky
Photo 5.

Photo taken from the northwest showing
the commercial buildings (#2) on
the east side of South Main Street

(compare with photo 14, taken from
the opposite angle).

JUN 14 1976

JUL 14 1976



MICKEY STOVALL

TV APPLIANCES - FURNITURE

DR. BOWLING GREEN
CLARKSVILLE
MADISONVILLE

Russellville Historic District
Russellville, Kentucky, Logan County
Robert Stuart, 1975, News-Democrat
and Logan Leader office, 120 Public
Square, Russellville, Kentucky
Photo 6.

Photo of the south side of the Public
Park taken from the north showing
the Harrison building (#3), City
Hall (#4), and the City police and
fire station (#5).

JUN 14 1976

JUL 14 1976



News-Democrat • THE LEADER

Russellville Historic District
Russellville, Kentucky, Logan County
Robert Stuart, 1975, News-Democrat
and Logan Leader office, 120 Public

Square, Russellville, Kentucky
Photo 7.

Photo taken from the east showing
the New-Democrat and Logan Leader
newspaper office (#6) at the south-
west corner of the Public Park.

JUN 14 1976

JUL 14 1976



FURNITURE APPLIANCES

FURNITURE APPLIANCES

FURNITURE APPLIANCES

F

JCT
68

3

FIN
SE

Russellville Historic District
Russellville, Kentucky, Logan County
Robert Stuart, 1975, News-Democrat
and Logan Leader office, 120 Public

Square, Russellville, Kentucky
Photo 8.

Photo taken from the southeast
showing the Opera House (#7) on the
left, the east side of the Harrison
building (#3) at the end of the block
on the right, and the old courthouse
square (#1) in the distance.

JUN 14 1976

JUL 14 1976



CRAFTS STATIONERY & OFFICE SUPPLIES

DEMOCRATIC HEAD QUARTERS

INSURANCE

DEMOCRATIC HEAD QUARTERS

STATE LOANS

DEMOCRATIC HEAD QUARTERS

PAINTING & SIGNING

Russellville Historic District
Russellville, Kentucky, Logan County
Robert Stuart, 1975, News-Democrat
and Logan Leader office, 120 Public
Square, Russellville, Kentucky

Photo 9.

Photo taken from the northwest
showing the A. P. Perry building
(#8). The Russellville Jr. High

School can be seen to the right of the
picture.

JUN 14 1976

JUL 14 1976



SOCKS

HILEY-WHITE
DRUGS

LEEDOM

ST
GENERAL
ANTS &
LARGER
SELVILL

LEEDOM
LEEDOM

Russellville Historic District
Russellville, Kentucky, Logan County
Robert Stuart, 1975, News-Democrat
and Logan Leader office, 120 Public
Square, Russellville, Kentucky

Photo 10.

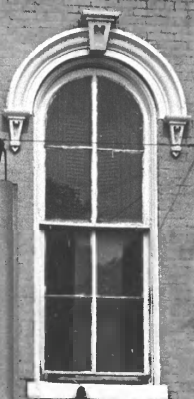
Photo taken from the south (west)
showing the block of North Main
Street (#9) north of the old court-
house square.

JUN 14 1976

JUL 14 1976



J.M. PERRY
1879



Russellville Historic District
Russellville, Kentucky, Logan County
Robert Stuart, 1975, News-Democrat
and Logan Leader office, 120 Public
Square, Russellville, Kentucky

Photo 11.

Photo taken from the west showing
the J. M. Perry Building (#10).

JUN 14 1976

JUL 14 1976



Russellville Historic District
Russellville, Kentucky, Logan County
Copy made by Robert Stuart of picture
owned by Mrs. Wis Clark, 1975, News
Democrat and Logan Leader, 120

Public Square, Russellville, Kentucky
Photo 12.

A turn-of-the-century photo taken from
the west side of the old courthouse
square looking west. The building

on the right, at the intersection of
West 4th Street was the famous Greek
Revival Forst House Hotel, demolished
in 1960 (see photo 17). Building at

the left was adjacent to the hard-
ware store which now houses th e
newspaper office (#6). It was torn
down in the 1950s. JUN 14 1976

JUL 14 1976



Russellville Historic District
Russellville, Kentucky, Logan County
Robert Stuart, 1975, News-Democrat
and Logan Leader of fice, 120 Public
Square, Russellville, Kentucky

Photo 13.

Photograph taken in 1910 from the north (west) showing an overview of the courthouse square (#1). The Harrison building (#3) can be seen on the right (compare photo 5 and 6). The turreted buildings at the left and center have be replaced; most of the other facades shown are intact.

JUN 14 1976

JUL 14 1976



NEVIL

A.S. HODGEN & CO.

WANTED: Charley
...
M. R. H.

Russellville Historic District
Russellville, Kentucky, Logan County
Robert Stuart, 1975, News-Democrat
and Logan Leader office, 120 Public
Square, Russellville, Kentucky

Photo 14.

A circa 1900-1910 photograph of the
east side of South Main Street (#2)
southeast of the old courthouse
square (#1). The picture was taken

from the southwest.

JUN 14 1976

JUL 14 1976



Russellville Historic District
Russellville, Kentucky, Logan County
Leslie Page, III, 1975, News-Democrat
and Logan Leader office, 120 Public
Square, Russellville, Kentucky

Photo 15.

Photo taken from the south (west)
showing the Caldwell Saddle Factory
(#11).

JUN 14 1976

JUL 14 1976



Russellville Historic District
Russellville, Kentucky, Logan County
Leslie Page, III, 1975, News-Democrat
and Logan Leader office, 120 Public
Square, Russellville, Kentucky

Photo 16.

Photo taken from the (South) east
of the Breathitt-Morehead House
(#12) located on the west side of
Summer Street between 4th and 5th

Streets.

JUN 14 1976

JUL 14 1976



SOUTHERN DEPOSIT BANK

SOUTHERN DEPOSIT BANK

50¢

79
68
80

CHEVROLET

Russellville Historic District
Russellville, Kentucky, Logan Count;
Robert Stuart, 1975, News-Democrat
and Logan-Leader office, 120
Public Square, Russellville, Ky.

Photo 17.

Photo taken from the east showing
the Southern Deposit Bank Building
which was built in 1965 on the
site of the Forst House Hotel (See

Photo 12). The bank is located
on the west side of the old
courthouse square, at the junction
of West 4th Street. JUN 14 1976

JUL 14 1976



Russellville Historic District
Russellville, Kentucky
Robert Stuart, 1975, News-Democrat
and Logan Leader office, 120 Public
Square, Russellville, Kentucky

Photo 18

Photo taken from the southwest
showing the Kirkpatrick Office
building located on the north side
of 4th Street. Constructed in 1965,

it is adjacent to the new court-
house on the west. The old court-
house square is in the distance
on the right with the new Southern

Deposit Bank in between.

JUN 14 1976

JUL 14 1976



Russellville Historic District
Russellville, Kentucky, Logan County
Leslie Page III, 1975, News-Democrat
and Logan Leader office, 120 Public

Square, Russellville, Kentucky

Photo 19.

Photo taken from the northeast
showing the Clark building (#13)
located in the center of this picture.

The Kentucky Confederate Convention
took place here on Nov. 18-19, 1861.
The wings were added in the 1960s.

JUL 14 1976

JUN 14 1976



LOGAN COUNTY
COURTHOUSE

Russellville Historic District
Russellville, Kentucky, Logan County
Robert Stuart, 1975, News-Democrat
and Logan Leader office, 120 Public
Square, Russellville, Kentucky

Photo 20

Photo taken from the south of the
Logan County Courthouse (#14) .

It is diagonally opposite the Clark
building.

JUN 14 1976

JUL 14 1976



Russellville Historic District
Russellville, Kentucky, Logan County
Robert Stuart; 1975, News-Democrat
and Logan Leader office, 120 Public
Square, Russellville, Kentucky

Photo 20a.

Photo taken from the southwest of
the Russellville jail (#14a).

JUN 14 1976

JUL 14 1976



Russellville Historic District
Russellville, Kentucky, Logan County
Leslie Page, III, 1975, News-Democrat
and Logan Leader office, 120 Public
Square, Russellville, Kentucky

Photo 21.

JUN 14 1976

Photo taken from the northwest of
the Bethel College Married Students
quarters (#15). It is located at the
corner of Nashville and West 7th.

JUL 14 1976



Russellville Historic District

Russellville, Kentucky, Logan County
Leslie Page III, 1975, News-Democrat
and Logan Leader office, 120 Public
Square, Russellville, Kentucky

Photo 22.

JUN 14 1976

Photo taken from the northeast of
the Baptist Parsonage (#16) which
is located on the southwest corner
of Nashville and West 7th Streets.

JUL 14 1976



Russellville Historic District
Russellville, Ky. Logan County
Leslie Page, III, 1975, News-Democrat
and Logan Leader office, 120 Public
Square, Russellville, Kentucky

JUN 14 1976

Photo 23.

Photo taken from the south of the
Dudley Evans House (#17) on the
northwest corner of 8th and Nashville
Streets.

JUL 14 1976



Russellville Historic District

Russellville, Ky. Logan County

Leslie Page III, 1975, News-Democrat

and Logan Leader office, 120 Public

Square. Russellville. Kentucky

Photo 24.

Photo taken from the east of the
Thomas Evans House (#18). It is
located on the west side of Nashville
Street, south of #17.

JUN 14 1976

JUL 14 1976



Russellville Historic District
Russellville, Ky. Logan County
Leslie Page, III, 1975 News-Democrat
and Logan Leader office, 120 Public
Square, Russellville, Kentucky

Photo 25.

Logan
Photo taken from the east of the
Maple Grove Cemetery Sexton's
house (#19).
JUN 14 1976

JUL 14 1976



Russellville Historic District
Russellville, Kentucky, Logan County
Leslie Page, III, 1975, News-Democrat
and Logan Leader office, 120 Public
Square, Russellville, Ky.

Photo 26.

Logan Co.

Photo taken from the south of the Lee
House (#20).

JUN 14 1976

JUL 14 1976



Russellville Historic District

Russellville, Kentucky

Leslie Page, III 1975

News-Democrate and Logan Leader
Office

120 Public Square

Russellville, Kentucky JUN 14 1976

Photo 27

Logan Co.

Photo of the Clark House (#21) taken
from the northwest.

JUL 14 1976



NINTH ST
WINTER ST

Russellville Historic District

Russellville, Kentucky

Leslie Page, III 1975

News-Democrat & Logan Leader Off.

120 Public Square

Russellville, Kentucky

Photo 28

Logan CV

Photo of the Rhea House (#22) taken
from the north.

JUN 14 1976

JUL 14 1976



Russellville Historic District

Russellville, Kentucky

Logan Co

Leslie Page, III

1975

News-Democrat & Logan Leader Office

120 Public Square

Russellville, Kentucky

Photo 29

Photo taken from the north of the
John J. Crittenden House located on
the southwest corner of Ninth and

Main streets. Note frame and brick
wings linked by portico.

JUL 14 1976

JUN 14 1976



Russellville Historic District

Russellville, Kentucky *Logan Co*

Leslie Page, III 1975

News-Democrat & Logan Leader Office
120 Public Square

Russellville, Kentucky

Photo 30

Photo taken from the north of the
Wallace-Byrne House, located on the
southeast corner of Ninth and Main
streets (#24).

JUL 14 1976

JUN 14 1976



Russellville Historic District

Russellville, Kentucky

Leslie Page, III 1975

News-Democrat & Logan Leader Office

120 Public Square *Logan Co.*

Russellville, Kentucky JUN 14 1976

Photo 31

Photo taken from the northeast of the
Roberts-Edwards House (#25).

JUL 14 1976



Russellville Historic District

Russellville, Kentucky

Leslie Page, III 1975

News-Democrat & Logan Leader office

120 Public Square

Russellville, Kentucky *Logan Co.*

Photo 32

JUN 14 1976

Photo taken from the south of the
Roberts-Edwards House (#25). The
south side faces Ninth Street.

JUL 14 1976



Russellville Historic District

Russellville, Kentucky

Leslie Page, III 1975

News-Democrat & Logan Leader office

120 Public Square

Russellville, Kentucky

Logan Co

Photo 33

Photo taken from the northeast of the
Courts House (#26), located on the
northwest corner of Main and Ninth
streets.

JUN 14 1976

JUL 14 1976



Russellville Historic District

Russellville, Kentucky

Leslie Page, III 1975

News-Democrat & Logan Leader office

120 Public Square *Logan Co*

Russellville, Kentucky

Photo 34

JUN 14 1976

Photo of the O'Bannon-Bibb House (#27) taken from the southwest. The Wallace-Bryne (#24) is located to the south, the John J. Crittenden House (#23) to the southwest, and the Courts House (#26) to the west.

JUL 14 1976



Russellville Historic District

Russellville, Kentucky *Logan Co*

Leslie Page, III 1975

News-Democrat & Logan Leader office

120 Public Square

Russellville, Kentucky

Photo 35

JUN 14 1976

Photo taken from the southeast of the
Armistead-Morehead House (#28).

JUL 14 1976



Russellville Historic District

Russellville, Kentucky

Leslie Page, III

1975

News-Democrat & Logan Leader office

120 Public Square

Russellville, Kentucky

Photo 36

JUN 14 1976

Photo taken from the west of the
Major Sherwood Atkinson House (#29),
located opposite the Armistead More-
head House (#28).

JUL 14 1976



Russellville Historic District
Russellville, Ky. Logan County
Leslie Page, 1975 News-Democrat
and Logan Leader office, 120 Public
Square, Russellville, Kentucky

Photo 37

JUN 14 1976

Photo taken from the north of the
Major Sherwood Atkinson House (#29)
Notice the circular stairs to the
left.

JUN 15 1976



Methodist Church
R. A. BROWN, PASTOR
REV. W. H. BROWN, CHORUS LEADER
REV. JOHN McCAULEY
R. A. BROWN, AUSTRALIA
MARCH 9 13
MARCH 10 13
MARCH 11 13
MARCH 12 13
MARCH 13 13

Russellville Historic District
Russellville, Kentucky *Logan Co*
Leslie Page, III 1975
News-Democrat & Logan Leader o
office, 120 Public Square,

Russellville, Ky.

Photo 38.

JUN 14 1976

Photo taken from the west of the
Methodist Temple (#30)

JUL 14 1976



Russellville Historic District

Russellville, Ky.

Leslie Page, III

1975

News-Democrat & Logan Leader
office, 120 Public Square

Russellville, Ky. JUN 14 1976

Photo 39.

Photo taken from the southeast of
the Waggoner-Browder House (#31).

JUL 14 1976



Russellville Historic District

Russellville, Ky.

Leslie Page, III

Logan CV
1975

News-Democrat & Logan Leader
office, 120 Public Square,

Russellville, Ky.

Photo 40.

JUN 14 1976

Photo taken from the northwest
of the Jesse Bibb House (#32).

JUL 14 1976



Russellville Historic District

Russellville, Ky.

Logan Co

Leslie Page III

1975

News-Democrat and Logan Leader
office, 120 Public Square

Russellville, Kentucky

Photo 41.

Photo of the Trinity Episcopal
Church (#33) taken from the south-
east.

JUN 14 1976

JUL 14 1976



Russellville Historic District

Russellville, Ky.

Leslie Page III

Logan Co.
1975

News-Democrat and Logan Leader
office, 120 Public Square

Russellville, Kentucky

Photo 42.

Photo taken from the east showing
the entrances of the Trinity Episcopal
Church (#42) and the iron fence

around the church.

JUL 14 1976

JUN 14 1976



Russellville Historic District

Russellville, Ky.

Leslie Page, III

Logan CW

1975

News-Democrat and Logan Leader

120 Public Square, Russellville, Ky

Photo 43.

Photo taken from the northeast
of the Nimrod Long Bank Building
(#34).

JUN 14 1976

JUL 14 1976



Russellville Historic District
Russellville, Ky.

Leslie Page, III 1975

News-Democrat and Logan Leader
120 Public Square, Russellville. Kv

Photo 44.

Logan Co

Photo taken from the southwest
showing the side entrance of the
Nimrod Long Banking Co. (#34)

Notice old herringbone brick walk
along side of property.

JUN 14 1976

JUL 14 1976



Russellville Historic District

Russellville, Ky. *Logan Co*

Leslie Page III 1975

News-Democrat and Logan Leader

office, 120 Public Square

Russellville, Ky.

Photo 45.

Photo taken from the northwest of
the Nimrod Long Bank Co. and

Building (#34) as well as its iron
fence, showing the latticed gallery
and other rear dependencies of
the building.

JUN 14 1976

JUL 14 1976



Russellville Historic District

Russellville, Ky.

Leslie Page III

Logan *W*
1975
News-Democrat and Logan Leader

office, 120 Public Square

Russellville, Ky.

Photo 46.

JUN 14 1976

Photo taken from the southwest
of the First Baptist Church (#36).

JUL 14 1976



Russellville Historic District
Russellville, Ky. *Logan Co*
Leslie Page III 1975
News-Democrat and Logan Leader

office, 120 Public Square
Russellville, Ky.
Photo 47.

JUN 14 1976

Photo taken from the east of the
Major Richard Bibb House (#36).

JUL 14 1976



Russellville Historic District

Russellville, Ky.

Logan CW

Leslie Page III

1975

News-Democrat and Logan Leader

office, 120 Public Square

Russellville, Ky.

Photo 48.

Photo taken from the northeast of
the Major Bibb House (#36) Notice

the interesting iron fence.

JUL 14 1976

JUN 14 1976



Russellville Historic District

Russellville, Ky. *Logan Co*

Leslie Page III 1975

News-Democrat and Logan Leader
office , 120 Public Square

Russellville, Ky.

Photo 49.

Photo taken from the northeast of
the Slaughter-DeGraff ~~er~~ried House
(#37).

JUN 14 1976

JUL 14 1976



Russellville Historic District
Russellville, Ky.

Leslie Page III 1975

News-Democrat and Logan Leader
office, 120 Public Square

Russellville, Ky.

Photo 50

Logan CD

Photo taken from the northwest
of the brick dependency, once used
as a schoolhouse, located behind

the Slaughter-DeGraffenried House
(#37).

JUN 14 1976

JUL 14 1976



Russellville Historic District
Russellville, Ky. *Logan CW*
Leslie Page, III 1975
News-Democrat and Logan Leader
office, 120 Public Square. Russellville

Photo 51.

Photo taken from the east of Lyon
House (#38).

JUN 14 1976

JUL 14 1976



Russellville Historic District

Russellville, Ky.

Logan W

Leslie Page III

1975

News-Democrat and Logan Leader

office 120 Public Square

Russellville, Kentucky

Photo 52.

JUN 14 1976

Photo taken from the south of the
Curd-Coffman House (#39).

JUL 14 1976



First Christian Church
of East Baton Rouge

Church School, 9:45
Worship, 10:00

HE HAS RISEN
FROM THE DEAD

Russellville Historic District
Russellville, Kentucky

Robert Stuart, 1975

News-Democrat & Logan Leader office
120 Public Square

Russellville, Kentucky

Photo 53

Logan Co

Photo taken from the northeast of the
First Christian Church of Russell-
ville (#40).



Russellville Historic District

Russellville, Kentucky

Leslie Page III 1975

News-Democrat and Logan Leader

office, 120 Public Square,

Russellville, Ky.

JUN 14 1976

Photo 54.

Logan CW

Photo taken from the northeast

of the Morton-Loving House (#41).



PARKING
FUNERAL HOME

S
FUN

Russellville Historic District

Russellville, Ky.

Logan Co

Leslie Page III

1975

News-Democrat and Logan Leader
office, 120 Public Square.

Russellville, Ky.

JUN 14 1976

Photo 55.

Photo taken from the southwest of
the Samuel Caldwell House (#42).

JUL 14 1976



Russellville Historic District

Russellville, Ky.

Logan CW

Leslie Page, III

1975

News-Democrat and Logan Leader

office, 120 Public Square

Russellville, Kentucky

Photo 56.

JUN 14 1976

Photo taken from the northeast of
the Andrews House (#43).

JUL 14 1976



Russellville Historic District
Russellville, Ky. *Logan*
Leslie Page, III 1975
News-Democrat and Logan Leader

office, 120 Public Square
Russellville, Kentucky

Photo 57.

JUN 14 1976

Photo taken from the northwest of
the First Presbyterian Church (#44)

JUL 14 1976



Russellville Historic District

Russellville, Kentucky

Logan Co

Leslie Page, III

1974

News-Democrat & Logan Leader office

120 Public Square

Russellville, Kentucky

Photo 58

JUN 14 1976

Photo taken from the northeast of the
Logan County Public Library (# 45)
which was constructed in the 1960s.

JUL 14 1976



Russellville Historic District

Russellville, Ky. *Logan Co*

Leslie Page, III 1975

News-Democrat and Logan Leader
office, 120 Public Square

Russellville, Ky. JUN 14 1976

Photo 59.

Photo taken from the south of the
Sandidge House (#46).

JUL 1 1976



Russellville Historic District

Russellville, Kentucky

Logan Co

Leslie Page, III

1975

News-Democrat and Logan Leader

office 120 Public Square

Russellville, Kentucky

JUN 14 1976

Photo 60.

Photo taken from the northwest of
the Caldwell-Fuqua House (#47).

JUL 14 1976



Russellville Historic District

Russellville, Ky.

Logan CW

Leslie Page III,

1975

News-Democrat and Logan Leader

office. 120 Public Square

Russellville, Kentucky

Photo 61.

Photo taken from the northeast of
the Seward House (#48)

JUN 14 1976

JUL 14 1976



Russellville Historic District
Russellville, Ky. *Logan W*
Leslie Page, =III 1975

News-Democrat and Logan Leader

office, 120 Public Square

Russellville, Kentucky

Photo 62.

JUN 14 1976

Photo taken from the southwest of
the Perry-Thompson House (#49).

JUL 14 1976



Russellville Historic District

Russellville, Kentucky *Logan Co*

Leslie Page, III 1975

News-Democrat and Logan Leader

office. 120 Public Square
Russellville, Ky.

Photo 63.

JUN 14 1976

Photo taken from the west showing
the Harrison House (#50) and iron
fence.

JUL 14 1976



Russellville Historic District

Russellville, Kentucky

Logan CV

Leslie Page, III

1975

News-Democrat and Logan Leader

office, 120 Public Square

Russellville, Kentucky

Photo 64.

Photo taken from the southwest
of the facade of the Harrison

House (#50).

JUN 14 1976

JUL 14 1976



Russellville Historic District
Russellville, Kentucky *Logan Co*
Leslie Page, III 1975
News-Democrat and Logan Leader

office, 120 Public Square
Russellville, Kentucky
Photo 65.

Photo taken from the southwest of
the iron fence which encloses the

Harrison House (#50)

JUL 14 1976

JUN 14 1976



Russellville Historic District

Russellville, Kentucky

Logan CV

Leslie Page, III

1975

News-Democrat and Logan Leader
office, 120 Public Square

Russellville, Kentucky

Photo 66.

Photo taken from the north of the
Perry House (#51).

JUN 14 1976

JUL 14 1976



Russellville Historic District

Russellville, Kentucky

Leslie Page, III

1975

News-Democrat and Logan Leader
office, 120 Public Square

Russellville, Kentucky

Photo 67.

Photo taken from the north of the
iron fence in front of the Perry House
(#51).

JUN 14 1976

JUL 14 1976



145

Russellville Historic District

Russellville, Kentucky

Leslie Page, III

1975

News-Democrat and Logan Leader
office. 120 Public Square

Russellville, Kentucky JUN 14 1976

Photo 68.

View from the southwest of the
Governor John Breathitt House (#52).

JUL 14 1976