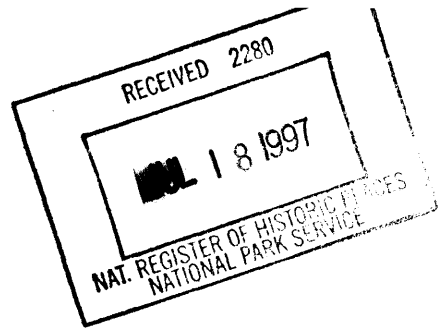


United States Department of the Interior
National Park Service

National Register of Historic Places
Registration Form



895

This form is for use in nominating or requesting determinations for individual properties and districts. See instruction in *How to Complete the National Register of Historic Places Registration Form* (National Register Bulletin 16A). Complete each item by marking "X" in the appropriate box or by entering the information requested. If an item does not apply to the property being documented, enter "N/A" for "not applicable." For functions, entries and narrative items on continuation sheets (NPS Form 10-900a). Use a typewriter, word processor, or computer, to complete all items.

1. Name of Property

historic name New Liberty School

other names/site number _____

2. Location

street & number New Liberty Community, Calhoun County Road No. 427

N/A not for publication

city or town Vardaman

vicinity

state Mississippi code MS county Calhoun code 13 zip code 38878

3. State/Federal Agency Certification

As the designated authority under the National Historic Preservation Act, as amended, I hereby certify that this nomination request for determination of eligibility meets the documentation standards for registering properties in the National Register of Historic Places and meets the procedural and professional requirements set forth in 36 CFR Part 60. In my opinion, the property meets does not meet the National Register criteria. I recommend that this property be considered significant nationally statewide locally. (See continuation sheet for additional comments.)

Kenneth H. P. Deal
Signature of certifying official/Title

July 10, 1997
Date

State or Federal agency and bureau

In my opinion, the property meets does not meet the National Register criteria. (See continuation sheet for additional comments.)

Signature of certifying official/Title

Date

State or Federal agency and bureau

4. National Park Service Certification

I hereby certify that the property is:

- entered in the National Register.
 - See continuation sheet.
- determined eligible for the National Register
 - See continuation sheet.
- determined not eligible for the National Register.
- removed from the National Register.
- other, (explain:) _____

Edson H. Beall 8/15/97
 Signature of the Keeper Date of Action

**United States Department of the Interior
National Park Service**

**National Register of Historic Places
Continuation Sheet**

New Liberty School
Name of Property

Calhoun, MS
County, State

Section number 7

Page 1

Description

The New Liberty School is located adjacent of Calhoun County Road 427 at its intersection with Calhoun County Road 428, approximately 2.7 miles west of Vardaman and 1.2 miles north of Mississippi Hwy. 8. The site is accessible by a dirt driveway and is generally surrounded on three sides by forest with an open field to the west.

The east facade is a three bay, one-story wood frame structure of vernacular design with wood lap siding and a hipped asphalt shingle roof and is supported on a brick pier foundation.

The east facade has an angled, recessed entrance with two doors leading to what was originally two classrooms. The entrance is flanked by two four-over-four light double hung windows. These windows, like all others now extant, are replacements of the original somewhat taller one-over-one light double hung windows which appear in a ca. 1936 photograph.

The north elevation has two four-over-four light double hung windows but originally had six windows, four of which have been closed with lap siding.

The west elevation has two window openings that are missing the sash. Like the other facades these are smaller replacements for the original four over four windows. Also covered over with lap siding is the opening for a brick stove flue.

The south elevation has a shed roof porch addition with 4x4 wood columns and metal three-rib roofing. A flush wood door leads to the interior. At the west end of the building a portion of the porch was enclosed and two toilets were added in the 1960's after the building was converted to use as a community center.

The interior of the New Liberty School was original partitioned between the classrooms. however, due to its changing function, the partition has been removed and replaced with cylindrical wooden columns with angled brackets to support the roof structure. The original interior finishes are all wood tongue and groove boards. After closure of the school in 1952 the walls were covered with vertical groove plywood paneling, but the original board walls are extant behind the paneling. The only alteration to the floor plan has been a raised stage floor added to the western end of the building.

Assessment of Integrity

While the New Liberty School building has been altered, notably by removal or replacement of windows, addition of a stage, removal of the dividing partition, and addition of a porch, the original configuration is apparent and also is documented by historical photographs. The modifications and addition were made ca. 1952 when the building began to be used as a community center. Even though the building has been slightly altered from its original appearance, it still retains its historic character and setting and the rarity of this once common building type makes it an extremely important example.

8. Statement of Significance

Applicable National Register Criteria

(Mark "x" in one or more boxes for the criteria qualifying the property for National Register listing.)

- A property is associated with events that have made a significant contribution to the broad patterns of our history.
- B Property is associated with the lives of persons significant in our past.
- C Property embodies the distinctive characteristics of a type, period, or method of construction or represents the work of a master, or possesses high artistic values, or represents a significant and distinguishable entity whose components lack individual distinction.
- D Property has yielded or is likely to yield information important in prehistory or history..

Criteria Considerations
(Mark "x" in all the boxes that apply.)

Property is:

- A owned by a religious institution or used for religious purposes.
- B removed from its original location.
- C a birthplace or grave.
- D a cemetery
- E a reconstructed building, object, or structure..
- F a commemorative property.
- G less than 50 years of age or achieved significance within the past 50 years.

Areas of Significance
(Enter categories from instructions)

Education

Period of Significance

ca: 1908 to 1946

Significant Dates

ca: 1908

Significant Person

(Complete if Criterion B is marked above)
N/A

Cultural Affiliation

N/A

Architect/Builder

UNKNOWN

Narrative Statement of Significance

(Explain the significance of the property on one or more continuation sheets.)
See Attached

9. Major Bibliographical References

Bibliography

(Cite the books, articles, and other sources used in preparing this form on one or more continuation sheets.)

Previous documentation on file (NPS):

- preliminary determination of individual listing (36 CFR 67) has been requested
- previously listed in the National Register
- previously determined eligible by the National Register
- designated a National Historic Landmark
- recorded by Historic American Buildings Survey # _____
- recorded by Historic American Engineering Record # _____

Primary location of additional data:

- State Historic Preservation Office
- Other State agency
- Federal agency
- Local government
- University
- Other

Name of repository:

**United States Department of the Interior
National Park Service**

**National Register of Historic Places
Continuation Sheet**

New Liberty School
Name of Property

Calhoun, MS
County, State

Section number 8

Page 2

Statement of Significance

The New Liberty School is being nominated to the National Register of Historic Places under Criterion A for its contributions in the field of education in Calhoun County, Mississippi. The building is of local educational significance because it served the New Liberty Community from 1908 until its closure in 1952. New Liberty School continues as a part of the community's identity and is presently used as the community center.

The building is the only surviving example in Calhoun County of the school buildings that dated to the era before public school consolidation. While the building has been altered by the replacement of windows and the removal of the center partition, it retains its historical integrity as well as its original design, location, and setting.

Public education in Mississippi began in 1821 by act of the Mississippi Legislature. That same year, the Legislature also established a "Literary Fund" to provide school tuition for indigent children. However, county education was still not sufficient. Improvements in rural, public education did not become widespread until the term of Governor Albert G. Brown in 1844-46.

Governor Brown established many reforms in county education, beginning with the creation of County Education Commissions. Even though his efforts failed statewide due to lack of financial support, his labors provided the New Liberty community with its first school building.

The first New Liberty School was built in conjunction with the New Liberty Church in 1845. State efforts continued to improve rural education, and between 1850 to 1860 financial support for rural education had doubled (Bettersworth, 253-257). The New Liberty community continued to support education, and after the 1845 schoolhouse was abandoned the school moved into the Primitive Baptist Church (Hollis).

In 1890, a new school was built by Thomas Martin Murphree, called Murphree School. This wood frame school functioned until 1908 when the present structure was built (Hollis, History, 166). Although the reasons for the closing of Murphree School are unclear, the present structure seems to be a result of the 1890 constitution of Mississippi. This constitution called for the establishment of a state superintendent of education, a four month school term, and the education of all children between five and twenty-one years of age. New Liberty School was most likely an improvement over the latter school and was constructed in 1908 to teach grades' 1-12. It remained the primary school until the 1940s when secondary education was centralized at nearby Derma Agricultural High School (Carter). New Liberty School continued to provide elementary education until 1952 when consolidation forced the school to close its doors as students were sent to Derma School.

New Liberty School has remained an important public building to the community. After its closure in 1952 the building was revamped for a community center. New Liberty School remains as only one of three institutional buildings in New Liberty. The others are the New Liberty Church and the Mt. Herman Church. Currently, the New Liberty community has come together to raise monies to preserve the school building since it is a vital element of their identity.

**United States Department of the Interior
National Park Service**

**National Register of Historic Places
Continuation Sheet**

New Liberty School
Name of Property

Calhoun, MS
County, State

Section number 9-10

Page 3

Bibliography

Calhoun County Deed Records, Pittsboro, Mississippi. Transfer of property and quit claim deed; E.A. Enochs and Lottie M. Enochs to District 5 of Calhoun County, Mississippi, August 5, 1952.

Carter, John, Edington, "Brief History of New Liberty", attachment to Preliminary Education Questionnaire, Mississippi Department of Archives and History, March 15, 1996.

Carter, John, Edington, letter to Mrs. Martha Ann Martin, Chancery Clerk, Calhoun County, Pittsboro, Mississippi, April 1, 1996.

Hollis, Van. Newspaper article about the New Liberty Community.

Monitor Herald, "School Address at New Liberty in 1885 by B.M. Ellzy", February 2, 1996.

Nail, Ken; A History of Calhoun County, Calhoun County School District, publisher, June 1975.

Verbal Boundary Description:

Three and 9/10 acres, more or less, in the N.W. corner of the S $\frac{1}{2}$ of the SW $\frac{1}{4}$ of Section 5, Township 14, Range 1 East, and more particularly described as beginning at the N.W. Corner of the S $\frac{1}{2}$ of the SW $\frac{1}{4}$ of said Section 5, thence running south 48 rods along East the line of the SW $\frac{1}{4}$ of said Section 5, thence running East 18 rods to the Hollis & Pittsboro public road, thence running in a northwesterly direction along said public road to the north boundary line of the S $\frac{1}{2}$ of the SW $\frac{1}{4}$ of said section 5, thence running West 8 rods to the point of beginning.

Boundary Justification:

The property nominated is the property traditionally associated with the school and now owned by Calhoun County Board of Supervisors.

**United States Department of the Interior
National Park Service**

**National Register of Historic Places
Continuation Sheet**

New Liberty School
Name of Property

Calhoun, MS
County, State

Section number **Photos** **Page** 4

Photographic Information:

The following information is the same for all photographs.

- (1) New Liberty School
- (2) Vardaman vicinity, Calhoun County, Mississippi
- (3) Samuel H. Kaye
- (4) September 1996
- (5) Mississippi Department of Archives & History

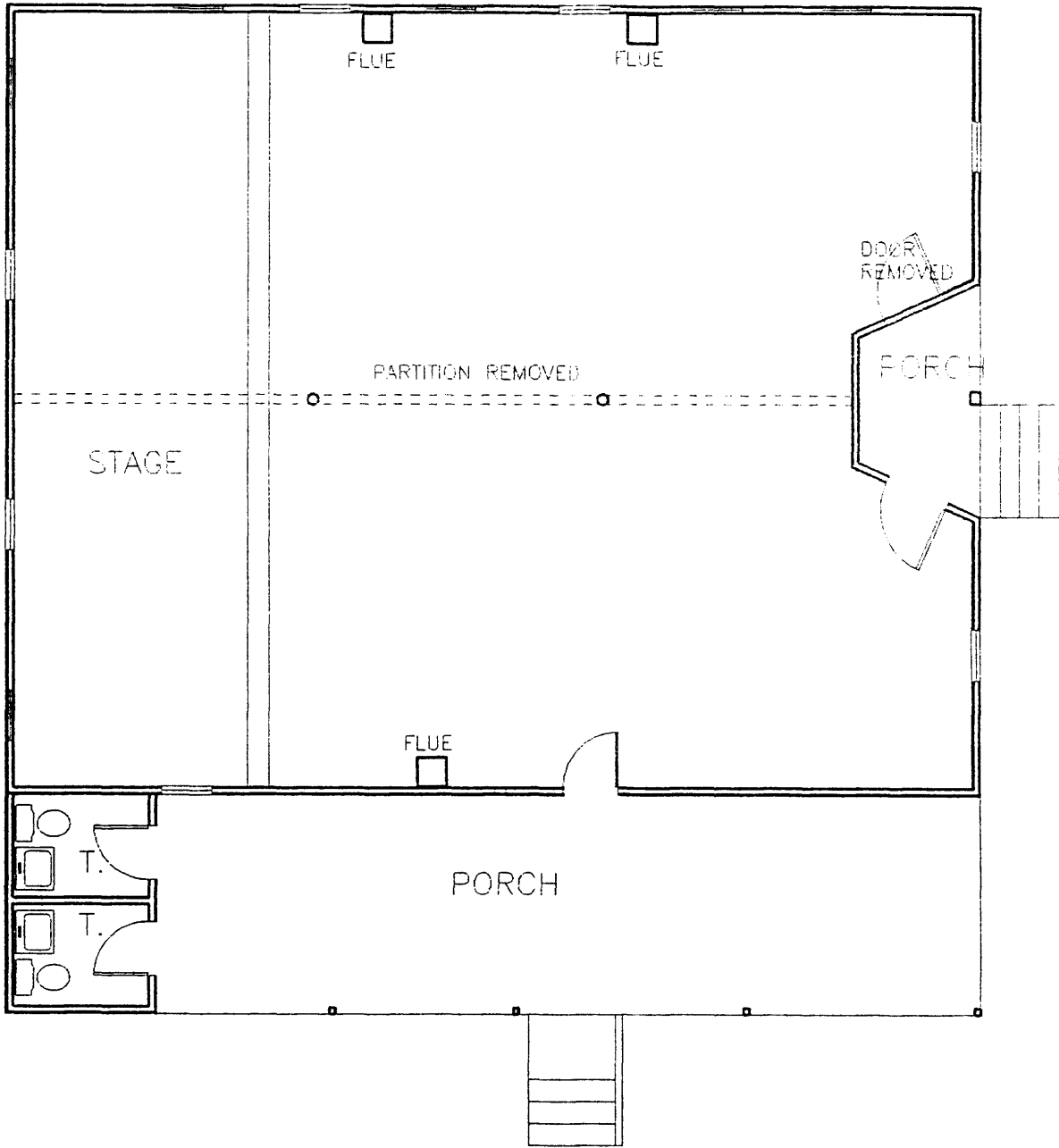
List of Photographs:

Exterior

- (1) East facade looking west
- (2) North elevation looking south
- (3) West elevation looking east
- (4) South elevation looking north
- (5) South elevation and East facade looking northwest

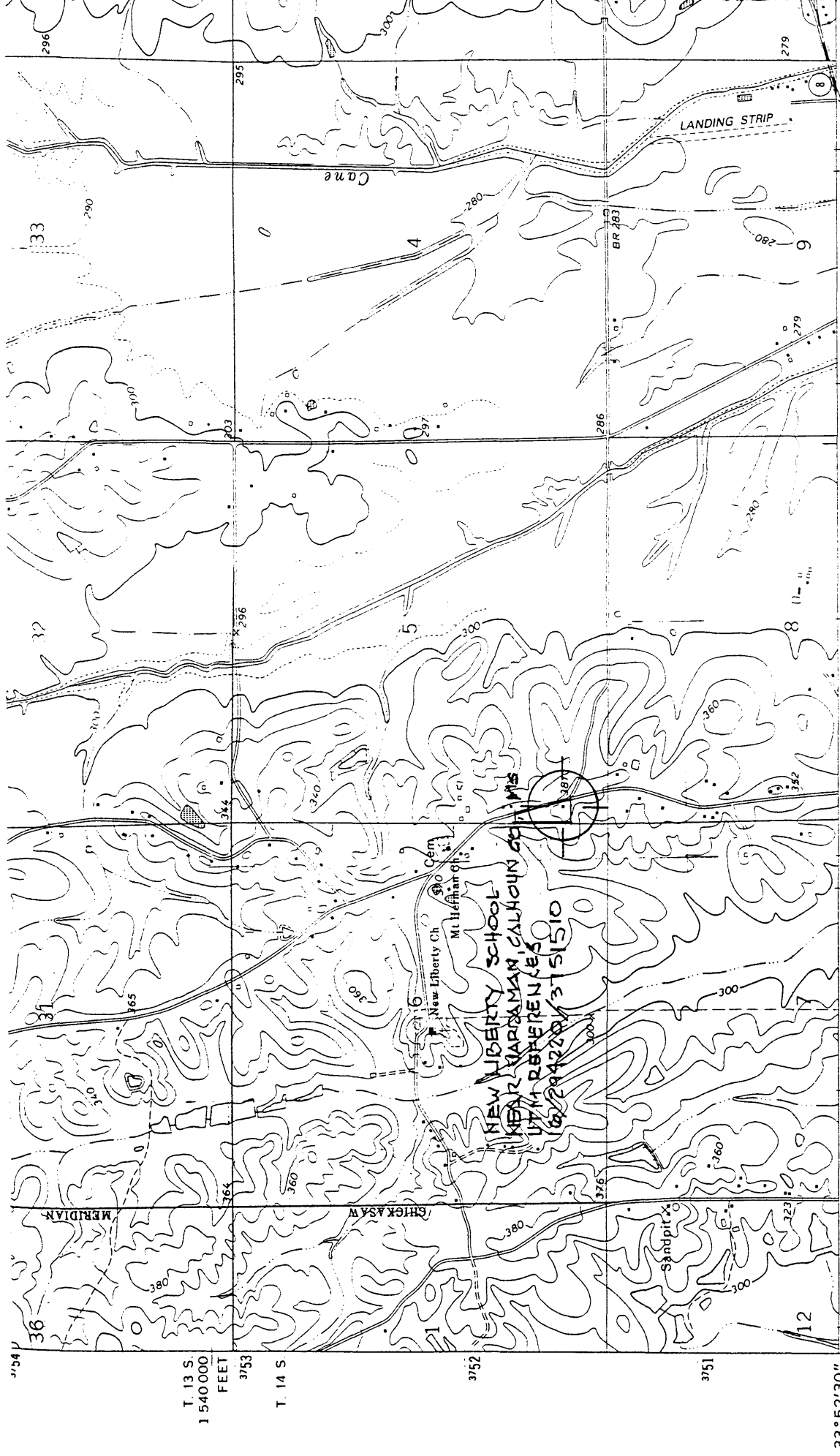
Interior

- (6) North wall of interior looking northwest
- (7) East wall of interior looking east
- (8) South wall of interior looking south
- (9) West wall of interior looking west



FLOOR PLAN
Scale: 1/8" = 1'-0"





(CALHOUN CITY) 3151 NSE
 89° 15' R. 1 W. R. 1 E. 380 000 FEET 294
 33° 52' 30" 89° 15' R. 1 W. R. 1 E. 380 000 FEET 294
 3754
 T. 13 S. 1 540 000 FEET 3753
 T. 14 S. 3752
 3751
 (ATLA) 3151 W
 DERMA 5 MI
 CALHOUN CITY 6 MI.
 SCALE
 1000 0 1000 2000 3000
 1 5 10
 CONTOUR INTERVAL
 DOTTED LINES REPRESENT
 NATIONAL GEODETIC CONTROL POINTS
 UTM GRID AND 1982 MAGNETIC NORTH DECLINATION AT CENTER OF SHEET
 2 1/2°
 44 MILLS
 1° 13' 22 MILLS
 MN
 GN
 Mapped, edited, and published by the Geological Survey
 Control by USGS and USC&GS
 Topography by photogrammetric methods from aerial photographs taken 1971. Field checked 1972
 Projection and 10,000-foot grid ticks: Mississippi coordinate system, east zone (transverse Mercator)
 1000-meter Universal Transverse Mercator grid ticks, zone 16, shown in blue. 1927 North American datum
 Fine red dashed lines indicate selected fence and field lines where generally visible on aerial photographs. This information is unchecked
 To place on the predicted North American Datum 1983 move the projection lines 10 meters south and 5 meters east as shown by dashed corner ticks

THIS MAP COMPLIES WITH NATIONAL GEODETIC CONTROL POINTS FOR SALE BY U. S. GEOLOGICAL SURVEY