



UNIVERSITY  
OF THE SOUTH  
SCHOOL OF THE ARTS  
AND SCIENCES

1. PRESIDIO ARMY MUSEUM  
PRESIDIO OF SAN FRANCISCO
2. SAN FRANCISCO, CALIFORNIA
3. NATIONAL PARK SERVICE PHOTO BY GORDON CHAPPELL
4. AUGUST 1990
5. NEGATIVE AT NATIONAL PARK SERVICE  
WESTERN REGIONAL OFFICE
6. POST HOSPITAL BUILT 1863-1864 (DESPITE  
BRONZE PLAQUE WHICH SAID 1857)  
VIEW TOWARD NORTHWEST OF BLDG. NO. 2
7. PHOTO NO. 1 OF 78



1. OFFICERS' ROW  
PRESIDIO OF SAN FRANCISCO
2. SAN FRANCISCO, CALIFORNIA
3. NATIONAL PARK SERVICE PHOTO BY GORDON CHAPPELL
4. JUNE 1990
5. NEGATIVE AT NATIONAL PARK SERVICE  
WESTERN REGIONAL OFFICE
6. OFFICERS' QUARTERS, BUILT 1862,  
ON FUNSTON AVENUE NORTH OF THE ALAMEDA  
  
VIEW TOWARD NORTH OF BLDGS. NOS.  
(LEFT TO RIGHT) 10, 9, 8, 7, 6
7. PHOTO NO. 2 OF 78



1. BARRACKS ON KEYES AVENUE  
PRESIDIO OF SAN FRANCISCO

BLDG. NO. 35

2. SAN FRANCISCO, CALIFORNIA

3. NATIONAL PARK SERVICE PHOTO BY GORDON CHAPPELL

4. JUNE 1989

5. NEGATIVE AT NATIONAL PARK SERVICE WESTERN REGIONAL OFFICE

6. OLD BARRACKS NO. 35, BUILT IN 1912, NOW 6TH ARMY  
HEADQUARTERS OFFICES, VIEW TOWARD SOUTH

7. PHOTO NO. 3 OF 78

Photo by  
Gordon Chappell

JUN 1989



1. MILITARY POLICE OFFICES  
PRESIDIO OF SAN FRANCISCO
2. SAN FRANCISCO, CALIFORNIA
3. NATIONAL PARK SERVICE PHOTO BY
4. JUNE 1989
5. NEGATIVE AT NATIONAL PARK SERVICE  
WESTERN REGIONAL OFFICE
6. BUILDING NO. 36, BUILT 1886  
AS BARRACKS, NOW MILITARY POLICE  
OFFICES, VIEW TOWARD NORTHEAST
7. PHOTO NO. 4 OF 78

Photo by  
Gordon Chappell

JUN 1989





1. 6TH ARMY HEADQUARTERS  
PRESIDIO OF SAN FRANCISCO
2. SAN FRANCISCO, CALIFORNIA
3. NATIONAL PARK SERVICE PHOTO BY GORDON CHAPPELL.
4. JUNE 1989
5. NEGATIVE AT NATIONAL PARK SERVICE  
WESTERN REGIONAL OFFICE
6. BUILDING NO. 38, BUILT 1940.  
AS ENLISTED MEN'S BARRACKS WITH  
MESS HALL; CONVERTED 1946 TO  
HEADQUARTERS, 6TH ARMY. VIEW  
TOWARD SOUTHEAST
7. PHOTO NO. 5 OF 78

**Photo by  
Gordon Chappell**

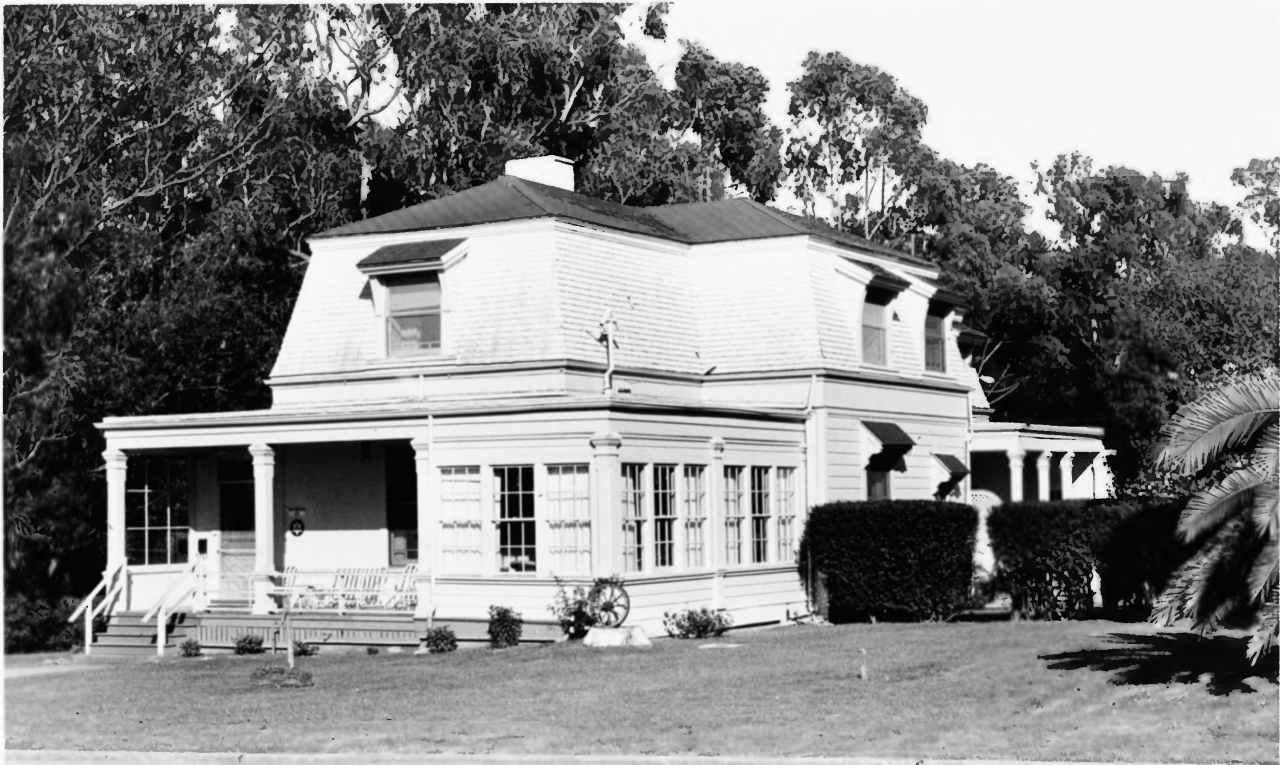
JUN 1989



1. GUEST QUARTERS  
PRESIDIO OF SAN FRANCISCO
2. SAN FRANCISCO, CALIFORNIA
3. NATIONAL PARK SERVICE PHOTO BY GORDON CHAPPELL
4. JUNE 1990
5. NEGATIVE AT NATIONAL PARK SERVICE  
WESTERN REGIONAL OFFICE
6. VIEW TOWARD SOUTHEAST OF  
BACHELOR OFFICERS' QUARTERS,  
PERSHING HALL, BUILT 1904  
BLDG. NO. 42
7. PHOTO NO. 6 OF 78



1. OFFICERS CLUB  
PRESIDIO OF SAN FRANCISCO
2. SAN FRANCISCO, CALIFORNIA
3. NATIONAL PARK SERVICE PHOTO BY GORDON CHAPPELL
4. AUGUST 1990
5. NEGATIVE AT NATIONAL PARK SERVICE  
WESTERN REGIONAL OFFICE
6. OFFICERS' CLUB, CONTAINING ADOBE  
WALLS CLAIMED TO DATE FROM 1791  
AS RESTORED BY THE ARMY IN 1934  
  
VIEW TOWARD WEST OF BLDG. NO. 50.
7. PHOTO NO. 7 OF 78



BLDG. NO. 65

1. OFFICER'S QUARTERS  
PRESIDIO OF SAN FRANCISCO
2. SAN FRANCISCO, CALIFORNIA
3. NATIONAL PARK SERVICE PHOTO BY GORDON CHAPPELL
4. JUNE 1989
5. NEGATIVE AT NATIONAL PARK SERVICE WESTERN REGIONAL OFFICE
6. MANSARD ROOF QUARTERS NO. 65 BUILT 1893  
VIEW TOWARD NORTHEAST
7. PHOTO NO. 8 OF 78

Photo by  
Gordon Chappell

JUN 1989





1. OFFICER'S QUARTERS BLDG. NO. 69  
PRESIDIO OF SAN FRANCISCO
2. SAN FRANCISCO, CALIFORNIA
3. NATIONAL PARK SERVICE PHOTO BY GORDON CHAPPELL
4. JUNE 1989
5. NEGATIVE AT NATIONAL PARK SERVICE WESTERN REGIONAL OFFICE
6. BLDG. NO. 69, ONLY MANSARD ROOF QUARTERS AT PRESIDIO, BUILT 1893
7. PHOTO NO. 9 OF 78

**Photo by  
Gordon Chappell**

**JUN 1989**



1. PERSONNEL OFFICES  
PRESIDIO OF SAN FRANCISCO
  2. SAN FRANCISCO, CALIFORNIA
  3. NATIONAL PARK SERVICE PHOTO BY GORDON CHAPPELL
  4. JUNE 1989
  5. NEGATIVE AT NATIONAL PARK SERVICE  
WESTERN REGIONAL OFFICE
  6. BUILDINGS NOS. 86 AND 87, BUILT  
1863 AS SINGLE STORY BUILDINGS;  
REMODELED 1885 INTO TWO STORY  
BARRACKS; THEY WERE REMODELED  
AGAIN BEFORE 1931 (PROBABLY IN  
1917 OR 1918) INTO OFFICES, WITH  
THE SECOND STORY PORCHES ENCLOSED  
AND GLAZED FOR ADDITIONAL SPACE.  
VIEW TOWARD NORTH.
- NOS. 86 AND 87 ON MAP

7. PHOTO NO. 10 OF 78

Photo by  
Gordon Chappell

JUN 1989



1. SALUTE GUN MAGAZINE  
PRESIDIO OF SAN FRANCISCO
2. SAN FRANCISCO, CALIFORNIA  
  
NATIONAL PARK SERVICE  
PHOTO BY GORDON CHAPPELL
- 3.
4. JUNE 1990
5. NEGATIVE AT NATIONAL PARK SERVICE WESTERN REGIONAL OFFICE
6. POWDER MAGAZINE BUILT 1863, BLDG. NO. 95

VIEW TOWARD WEST-SOUTHWEST

7. PHOTO NO. 11 OF 78



1. MONTGOMERY STREET BARRACKS  
PRESIDIO OF SAN FRANCISCO
2. SAN FRANCISCO, CALIFORNIA
3. NATIONAL PARK SERVICE PHOTO BY GORDON CHAPPELL
4. JUNE 1990
5. NEGATIVE AT NATIONAL PARK SERVICE WESTERN REGIONAL OFFICE
6. ROW OF BRICK BARRACKS FACING EAST ON  
WEST SIDE OF MONTGOMERY STREET, BUILT  
1895-1897  
VIEW TOWARD SOUTHWEST, RIGHT TO LEFT,  
BLDGS. NOS. 105, 104, 103, 102, 101
7. PHOTO NO. 12 OF 78

BLDGS. NOS. 101-105





1. A BRICK BARRACKS  
PRESIDIO OF SAN FRANCISCO
2. SAN FRANCISCO, CALIFORNIA
3. NATIONAL PARK SERVICE PHOTO BY GORDON CHAPPELL
4. JUNE 1990
5. NEGATIVE AT NATIONAL PARK SERVICE  
WESTERN REGIONAL OFFICE
6. ONE OF FIVE BRICK BARRACKS BUILT ON MONTGOMERY STREET  
DURING 1895-1897 - NO. 103 BUILT IN 1896  
  
VIEW TOWARD NORTHWEST
7. PHOTO NO. 13 OF 78



USAISC  
PRESIDIO

1. USAISC OFFICES  
PRESIDIO OF SAN FRANCISCO, CALIFORNIA
2. SAN FRANCISCO, CALIFORNIA
3. NATIONAL PARK SERVICE PHOTO BY GORDON CHAPPELL
4. JUNE 1989
5. NEGATIVE AT NATIONAL PARK SERVICE,  
WESTERN REGIONAL OFFICE
6. BUILDING NO. 116, BUILT 1885,  
AS SUTLER'S HOUSE, IN 1989,  
USED AS OFFICES. VIEW FROM SOUTH  
NO. 116 ON MAP
7. PHOTO NO. 14 OF 78

**Photo by  
Gordon Chappell**

**JUN 1989**



1. RILEY AVENUE ENLISTED FAMILY HOUSING BLDGS. NOS. 127-129  
PRESIDIO OF SAN FRANCISCO
2. SAN FRANCISCO, CALIFORNIA
3. NATIONAL PARK SERVICE PHOTO BY GORDON CHAPPELL
4. JUNE 1991
5. NEGATIVE AT NATIONAL PARK SERVICE WESTERN REGIONAL OFFICE
6. DUPLEXES FOR MARRIED ENLISTED PERSONNEL NOS. 127, 128, 129  
BUILT IN 1931 VIEW TOWARD NORTH
7. PHOTO NO. 15 OF 78



1. NON-COMMISSIONED OFFICERS' CLUB  
PRESIDIO OF SAN FRANCISCO
2. SAN FRANCISCO, CALIFORNIA
3. NATIONAL PARK SERVICE PHOTO BY  
GORDON CHAPPELL
4. AUGUST 1991
5. NEGATIVE AT NATIONAL PARK SERVICE  
WESTERN REGIONAL OFFICE
6. SERVICE CLUB BUILT 1948, LATER N.C.O. CLUB, IN WHICH IN 1951  
UNITED STATES AND JAPAN SIGNED A SIGNIFICANT MILITARY TREATY  
BLDG. NO. 135 VIEW TOWARD NORTHEAST
7. PHOTO NO. 16 OF 78





1. POST OFFICE AND BANK BLDG. NO. 210  
PRESIDIO OF SAN FRANCISCO
2. SAN FRANCISCO, CALIFORNIA
3. NATIONAL PARK SERVICE PHOTO BY GORDON CHAPPELL
4. AUGUST 1990
5. NEGATIVE AT NATIONAL PARK SERVICE  
WESTERN REGIONAL OFFICE
6. GUARDHOUSE, BUILT 1900, NOW A POST OFFICE (BLDG. NO. 210)  
VIEW TOWARD NORTH OF BLDG. NO. 210
7. PHOTO NO. 17 OF 78



1. POST HEADQUARTERS  
PRESIDIO OF SAN FRANCISCO
  2. SAN FRANCISCO, CALIFORNIA
  3. NATIONAL PARK SERVICE PHOTO BY GORDON CHAPPELL
  4. NEGATIVE AT NATIONAL PARK SERVICE WESTERN REGIONAL OFFICE
  5. JUNE 1991
  6. BAKERS' AND COOKS' SCHOOL  
BUILT 1939  
NOW POST HEADQUARTERS
- VIEW TOWARD NORTH OF EAST SIDE OF BLDG NO. 220
7. PHOTO NO. 18 OF 78



1. MILITARY COURT BUILDING  
PRESIDIO OF SAN FRANCISCO
2. SAN FRANCISCO, CALIFORNIA
3. NATIONAL PARK SERVICE PHOTO BY GORDON CHAPPELL
4. JUNE 1989
5. NEGATIVE AT NATIONAL PARK SERVICE  
WESTERN REGIONAL OFFICE
6. BUILDING NO. 222, BUILT 1910  
AS A STOREHOUSE, VIEW TOWARD  
SOUTHEAST
7. PHOTO NO. 19 OF 78

Photo by  
Gordon Chappell

JUN 1989



1. STOREHOUSE ON HALLECK STREET  
PRESIDIO OF SAN FRANCISCO

BLDG. NO. 223

2. SAN FRANCISCO, CALIFORNIA

3. NATIONAL PARK SERVICE PHOTO BY GORDON CHAPPELL

4. JUNE 1989

5. NEGATIVE AT NATIONAL PARK SERVICE WESTERN REGIONAL OFFICE

6. STOREHOUSE NO. 223, NOW USED AS OFFICES, BUILT IN 1897.

VIEW TOWARD SOUTHEAST

7. PHOTO NO. 20 OF 78

Photo by  
Gordon Chappell

JUN 1989





1. OFFICES OF HOUSING DIVISION  
PRESIDIO OF SAN FRANCISCO
2. SAN FRANCISCO, CALIFORNIA
3. NATIONAL PARK SERVICE PHOTO BY GORDON CHAPPELL
4. JUNE 1989
5. NEGATIVE AT NATIONAL PARK SERVICE  
WESTERN REGIONAL OFFICE
6. BUILDING NO. 227, BUILT 1897  
AS A STOREHOUSE. VIEW  
TOWARD NORTHEAST.
7. PHOTO NO. 21 OF 78

Photo by  
Gordon Chappell

JUN 1989



1. BAKERY  
PRESIDIO OF SAN FRANCISCO
2. SAN FRANCISCO, CALIFORNIA
3. NATIONAL PARK SERVICE PHOTO BY GORDON CHAPPELL
4. JUNE 1989
5. NEGATIVE AT NATIONAL PARK SERVICE WESTERN REGIONAL OFFICE
6. OLD BAKERY, BUILDING NO. 228, NOW A CLEANER'S  
BUILT 1909, VIEW TOWARD NORTHEAST
7. PHOTO NO. 22 OF 78

BLDG. NO. 227

Photo by  
Gordon Chappell

JUN 1989



099-374-15 (4-11-25-11A) (12-1500)

1. INFANTRY TERRACE - ARGUELLO BOULEVARD QUARTERS  
PRESIDIO OF SAN FRANCISCO
2. SAN FRANCISCO
3. U.S. ARMY PHOTO
4. APRIL 11, 1925 11 A.M.
5. COPY NEGATIVE AT NATIONAL PARK SERVICE  
WESTERN REGIONAL OFFICE
6. INFANTRY TERRACE COMPLEX OF  
OFFICERS' QUARTERS, BUILT 1910.  
SINCE THIS PHOTO GARAGES WERE ADDED  
BEHIND THEM AND WPA STONE RETAINING  
WALLS IN FRONT, BOTH IN THE 1930S,  
THEY REMAIN OTHERWISE UNCHANGED  
EXCEPT GROWTH OF VEGETATION PRECLUDES  
DUPLICATING THIS VIEW TODAY,  
VIEW TOWARD SOUTHWEST
7. BUILDINGS NOS. 325 THRU 345 (RIGHT TO LEFT AROUND THE "S")
7. PHOTO NO. 23 OF 78



1. OFFICERS' DUPLEXES ON INFANTRY TERRACE BLDGS. NOS. 328, 329  
PRESIDIO OF SAN FRANCISCO
2. SAN FRANCISCO, CALIFORNIA
3. NATIONAL PARK SERVICE PHOTO BY GORDON CHAPPELL
4. APRIL 1992
5. NEGATIVE AT NATIONAL PARK SERVICE WESTERN REGIONAL OFFICE
6. OFFICERS' QUARTERS (LEFT TO RIGHT) NOS. 329, 328  
BUILT IN 1910, VIEW TOWARD NORTHWEST
7. PHOTO NO. 24 OF 78





1. FIELD GRADE OFFICER'S QUARTERS  
PRESIDIO OF SAN FRANCISCO
2. SAN FRANCISCO, CALIFORNIA
3. NATIONAL PARK SERVICE PHOTO BY GORDON CHAPPELL
4. APRIL 1992
5. NEGATIVE AT NATIONAL PARK SERVICE WESTERN REGIONAL OFFICE
6. BUILDING NO. 341, PROBABLY INTENDED AS A REGIMENTAL  
OR POST COMMANDER'S (COLONEL'S) RESIDENCE; BUILT 1910  
AT INTERSECTION OF ARGUELLO BOULEVARD AND INFANTRY TERRACE
7. PHOTO NO. 25 OF 78

BLDG. NO. 341



1. OFFICERS' QUARTERS ON ARGUELLO BOULEVARD BLDGS OF 342-345  
PRESIDIO OF SAN FRANCISCO
2. SAN FRANCISCO, CALIFORNIA
3. NATIONAL PARK SERVICE PHOTO BY GORDON CHAPPELL
4. APRIL 1992
5. NEGATIVE AT NATIONAL PARK SERVICE WESTERN REGIONAL OFFICE
6. LEFT TO RIGHT, BUILDINGS NOS. 345, 344, 343, 342, BUILT 1910  
VIEW TOWARD WEST-SOUTHWEST
7. PHOTO NO. 26 OF 78



1. PRESIDIO BOULEVARD GATE  
PRESIDIO OF SAN FRANCISCO

STRUCTURE NO. 574

2. SAN FRANCISCO, CALIFORNIA

3. PHOTO BY GORDON CHAPPELL

4. SEPTEMBER 1990

5. NEGATIVE AT NATIONAL PARK SERVICE  
WESTERN REGIONAL OFFICE

6. PRESIDIO BOULEVARD GATE AND  
PLANTATIONS OF CYPRESS AND EUCALYPTUS  
TREES, ALL FROM THE 1890S, - STRUCTURE NO 574

VIEW TOWARD NORTH FROM OUTSIDE THE PRESIDIO  
AT JUNCTION OF PRESIDIO BLVD, AND PACIFIC AVENUE

7. PHOTO NO. 27 OF 78



1. MAIN GATE  
PRESIDIO OF SAN FRANCISCO
2. SAN FRANCISCO, CALIFORNIA
3. NATIONAL PARK SERVICE PHOTO  
BY GORDON CHAPPELL
4. JUNE 1990
5. NEGATIVE AT NATIONAL PARK SERVICE  
WESTERN REGIONAL OFFICE
6. LOMBARD STREET GATE, BUILT 1897  
VIEW TOWARD WEST OF STRUCTURE NO. 575  
(ARGUELLO GATE HAS SIMILAR STONE POSTS)
7. PHOTO NO. 28 OF 78





[NO. 3202]

1. NATIONAL CEMETERY NORTH GATE  
PRESIDIO OF SAN FRANCISCO
2. SAN FRANCISCO, CALIFORNIA
3. NATIONAL PARK SERVICE PHOTO BY  
GORDON CHAPPELL
4. JUNE 1990
5. NEGATIVE AT NATIONAL PARK SERVICE  
WESTERN REGIONAL OFFICE
6. SAN FRANCISCO NATIONAL CEMETERY  
OLD CAST IRON MAIN GATE C, 1885,  
RELOCATED C, 1931 AS THE NORTH GATE - [STRUCTURE 3202]  
VIEW TOWARD NORTHEAST
7. PHOTO NO, 30 OF 98



1. STABLES FOR 102 ANIMAS EACH  
PRESIDIO OF SAN FRANCISCO
2. SAN FRANCISCO, CALIFORNIA
3. NATIONAL PARK SERVICE PHOTO  
BY JET LOWE
4. SEPTEMBER 1981
5. NEGATIVE AT NATIONAL PARK SERVICE  
WESTERN REGIONAL OFFICE
6. STABLES (LEFT TO RIGHT) NOS. 668 (BUILT IN 1914) 663 (BUILT IN 1914),  
661 (BUILT IN 1913), 662 (BUILT IN 1914) AND 667 (BUILT IN 1914),  
VIEW TOWARD WEST-NORTHWEST
7. PHOTO NO. 31 OF 78

BLDGS, NOS, 661-663,  
667, 668



1. CAVALRY BARRACKS MESS HALL CEILING  
PRESIDIO OF SAN FRANCISCO
2. SAN FRANCISCO, CALIFORNIA
3. NATIONAL PARK SERVICE PHOTO  
BY GORDON CHAPPELL
4. JUNE 1990
5. NEGATIVE AT NATIONAL PARK SERVICE  
WESTERN REGIONAL OFFICE
6. CAVALRY BARRACKS NO. 682, BUILT 1902;  
DETAIL OF PRESSED METAL CEILING,  
CAST IRON CORINTHIAN COLUMN, IN INTERIOR
7. PHOTO NO. 32 OF 78



1. WEST CANTONMENT ENLISTED FAMILY DUPLEXES  
PRESIDIO OF SAN FRANCISCO BLDGS. NOS. 745, 747, 749, 751
2. SAN FRANCISCO, CALIFORNIA
3. NATIONAL PARK SERVICE PHOTO BY GORDON CHAPPELL
4. APRIL 1992
5. NEGATIVE AT NATIONAL PARK SERVICE WESTERN REGIONAL OFFICE
6. DUPLEXES ON PORTOLA STREET, LEFT TO RIGHT NOS.  
751, 749, 747, 745; 751 BUILT 1939, THE OTHERS 1933  
NOTE ALTERNATING STYLES OF SQUARED VERSUS ARCHED ENTRANCES  
AND GABLE VERSUS HIPPED ROOFS; 751 HAS NO ENCLOSED FRONT PORCH  
VIEW TOWARD SOUTH
7. PHOTO NO. 33 OF 78





1. PRESIDIO FOREST  
PRESIDIO OF SAN FRANCISCO
2. SAN FRANCISCO, CALIFORNIA
3. PHOTO BY GORDON CHAPPELL
4. JUNE 1990
5. NEGATIVE AT NATIONAL PARK SERVICE  
WESTERN REGIONAL OFFICE
6. A PLANTATION OF TREES BETWEEN  
LOVERS' LANE AND PRESIDIO BLVD.  
NORTH OF WEST PACIFIC AVENUE

VIEW TOWARD NORTH-NORTHWEST

7. PHOTO NO. 34 OF 78



1. CRISSY FIELD BUILDINGS - 7 OF 4  
PRESIDIO OF SAN FRANCISCO
- BIDGS. NOS. 643, 644,  
649, 650, 651, 920,
2. SAN FRANCISCO, CALIFORNIA
3. NATIONAL PARK SERVICE PHOTO BY GORDON CHAPPELL
4. AUGUST 1991
5. NEGATIVE AT NATIONAL PARK SERVICE WESTERN REGIONAL OFFICE
6. CRISSY FIELD BUILDINGS, COUNTERCLOCKWISE FROM LOWER LEFT:
  - A. PARACHUTE SHOP NO. 920 (1921)
  - B. ADMINISTRATION BUILDING NO. 651 (TILE ROOF) (1921)
  - C. ENLISTED BARRACKS WITH MESS NO. 650 (LARGE, TILE ROOF) (1921)  
NOW OFFICES, NOW NAMED STILWELL HALL
  - D. ARMY RESERVES, NO. 649 (1951) NONCONTRIBUTING
  - E. UNIT MOTOR POOL NO. 644 (1951) NONCONTRIBUTING (2 BAYS SIDE BY SIDE)
  - F. AIRCRAFT HANGAR NO. 643 (1923) (2 BAYS END TO END)
- VIEW FROM SOUTHWEST
7. PHOTO NO. 35 OF 78



BLDGS NOS. 901-919, 924

1. CRISSY FIELD 2 OF 4  
PRESIDIO OF SAN FRANCISCO
2. SAN FRANCISCO, CALIFORNIA
3. NATIONAL PARK SERVICE PHOTO BY GORDON CHAPPELL
4. AUGUST 1991
5. NEGATIVE AT NATIONAL PARK SERVICE WESTERN REGIONAL OFFICE
6. AT LOWER LEFT, SHOP BUILDING NO. 924, BUILT IN 1951, NONCONTRIBUTING  
ABOVE IT AT LEFT, COMPLEX OF WORLD WAR II "TEMPORARY"  
BARRACKS, ETC. BUILT 1941 (BLDGS. 901-919)  
VIEW TOWARD EAST.
7. PHOTO NO. 36 OF 78



1. CRISSY FIELD, BLDG, NO, 926 3 OF 4  
PRESIDIO OF SAN FRANCISCO
2. SAN FRANCISCO, CALIFORNIA
3. NATIONAL PARK SERVICE PHOTO BY GORDON CHAPPELL
4. JULY 1991
5. NEGATIVE AT NATIONAL PARK SERVICE WESTERN REGIONAL OFFICE
6. CRISSY ARMY AIRFIELD HANGAR NO. 926 BUILT 1921  
VIEW NORTHEAST
7. PHOTO NO. 37 OF 78





1. CRISSY FIELD 4 OF 4 BLDGS. NOS. 926, 933, 935, 937  
PRESIDIO OF SAN FRANCISCO
2. SAN FRANCISCO, CALIFORNIA
3. NATIONAL PARK SERVICE PHOTO BY GORDON CHAPPELL
4. AUGUST 1991
5. NEGATIVE AT NATIONAL PARK SERVICE WESTERN REGIONAL OFFICE
6. CRISSY FIELD BUILDINGS BUILT 1921, LEFT TO RIGHT:
- A. HANGAR NO. 937
  - B. DUPE SHOP AND BOILER HOUSE NO. 933
  - C. AERO STOREHOUSE NO. 935
  - D. HANGAR NO. 926
- VIEW TOWARD NORTH-NORTHEAST
7. PHOTO NO. 38 OF 78



1. CRISSY FIELD PILOTS' QUARTERS  
PRESIDIO OF SAN FRANCISCO

BLDGS, NOS, 959-964

2. SAN FRANCISCO, CALIFORNIA

3. PHOTO BY GORDON CHAPPELL

4. JUNE 1990

5. NEGATIVE AT NATIONAL PARK SERVICE  
WESTERN REGIONAL OFFICE

6. OFFICERS' (PILOTS') QUARTERS, CRISSY  
ARMY AIRFIELD, LEFT TO RIGHT: NOS. 959-964,  
BUILT IN 1921.

VIEW TOWARD SOUTHWEST

7. PHOTO NO. 39 OF 98



1. LETTERMAN HOSPITAL OFFICERS' QUARTERS BLDG. NO. 1000-1004  
PRESIDIO OF SAN FRANCISCO
2. SAN FRANCISCO, CALIFORNIA
3. PHOTO BY GORDON CHAPPELL
4. AUGUST 1990
5. NEGATIVE AT NATIONAL PARK SERVICE  
WESTERN REGIONAL OFFICE
6. LETTERMAN ARMY MEDICAL CENTER OFFICERS' ROW,  
LEFT TO RIGHT BLDGS. NOS. 1000, 1001 (BUILT 1902)  
1002, 1003, 1004 (BUILT 1908); BLDG. NO. 1000 WAS  
TRADITIONALLY COMMANDING OFFICERS OR COMMANDING GENERAL'S  
VIEW TOWARD NORTH
7. PHOTO NO. 41 OF 78



1. LETTERMAN ARMY HOSPITAL WARDS  
PRESIDIO OF SAN FRANCISCO
2. SAN FRANCISCO, CALIFORNIA
3. NATIONAL PARK SERVICE PHOTO BY GORDON CHAPPELL
4. JULY 1991
5. NEGATIVE AT NATIONAL PARK SERVICE WESTERN REGIONAL OFFICE
6. LETTERMAN ARMY HOSPITAL BUILDINGS  
BUILT 1924, 1933, 1931  
VIEW TOWARD EAST OF BLDGS, NOS. 1014, 1013, 1012 (LEFT TO RIGHT)
7. PHOTO NO. 42 OF 78
- BLDGS NOS. 1012-  
1014





1. LETTERMAN ARMY HOSPITAL ADMINISTRATION BUILDING. (ORIGINAL HEADQUARTERS)  
PRESIDIO OF SAN FRANCISCO BLDG. NO. 1016
2. SAN FRANCISCO, CALIFORNIA
3. PHOTO BY GURDON CHAPPELL
4. SEPTEMBER 1990
5. NEGATIVE AT NATIONAL PARK SERVICE  
WESTERN REGIONAL OFFICE
6. LETTERMAN ARMY MEDICAL CENTER  
ADMINISTRATION BUILDING, BUILT IN 1899  
- PART OF ARMY'S FIRST GENERAL HOSPITAL  
  
VIEW TOWARD EAST OF BLDG. NO. 1016
7. PHOTO NO. 43 OF 78



1. LETTERMAN ARMY HOSPITAL BUILDINGS  
PRESIDIO OF SAN FRANCISCO, CALIFORNIA  
BLDGS. NOS. 1047,  
1050, 1056, 1059,  
1060, 1062
2. SAN FRANCISCO, CALIFORNIA
3. NATIONAL PARK SERVICE PHOTO BY GORDON CHAPPELL
4. AUGUST 1990
5. NEGATIVE AT NATIONAL PARK SERVICE WESTERN REGIONAL OFFICE
6. LETTERMAN ARMY HOSPITAL - LEFT TO RIGHT  
BLDGS. NOS. 1051, 1050, 1047 - ON RIGHT SIDE OF STREET;  
NOS. 1062, 1060, 1059, 1056  
- A STREETSCAPE OF MOSTLY "INDUSTRIAL" -TYPE BUILDINGS  
VIEW NORTHWEST DOWN THORNBURG ROAD
7. PHOTO NO. 44 OF 78



1. LETTERMAN ARMY HOSPITAL  
PRESIDIO OF SAN FRANCISCO
2. SAN FRANCISCO, CALIFORNIA
3. NATIONAL PARK SERVICE PHOTO BY GORDON CHAPPELL
4. FEBRUARY 1992
5. NEGATIVE AT NATIONAL PARK SERVICE WESTERN REGIONAL OFFICE
6. HOSPITAL BUILDING NO. 1100, BUILT IN 1969, AND  
LETTERMAN ARMY HOSPITAL FLAGSTAFF (NON-CONTRIBUTING  
TO THE NHL) VIEWED FROM THE SOUTH
7. PHOTO NO. 45 OF 78
- BLDG. NO. 1100



1. GORGAS AVENUE WAREHOUSES  
PRESIDIO OF SAN FRANCISCO

BLDGS. NOS, 1161, 1162, 1163, 1167

2. SAN FRANCISCO, CALIFORNIA

3. PHOTO BY GORDON CHAPPELL

4. JUNE 1990

5. NEGATIVE AT NATIONAL PARK SERVICE  
WESTERN REGIONAL OFFICE

6. "TEMPORARY" WAREHOUSES, BUILT 1919

VIEW TOWARD EAST-SOUTHEAST OF  
BLDGS. NOS, (LEFT TO RIGHT) 1167,  
1163, 1162, 1161 DN GORGAS AVENUE

7. PHOTO NO. 46 OF 78



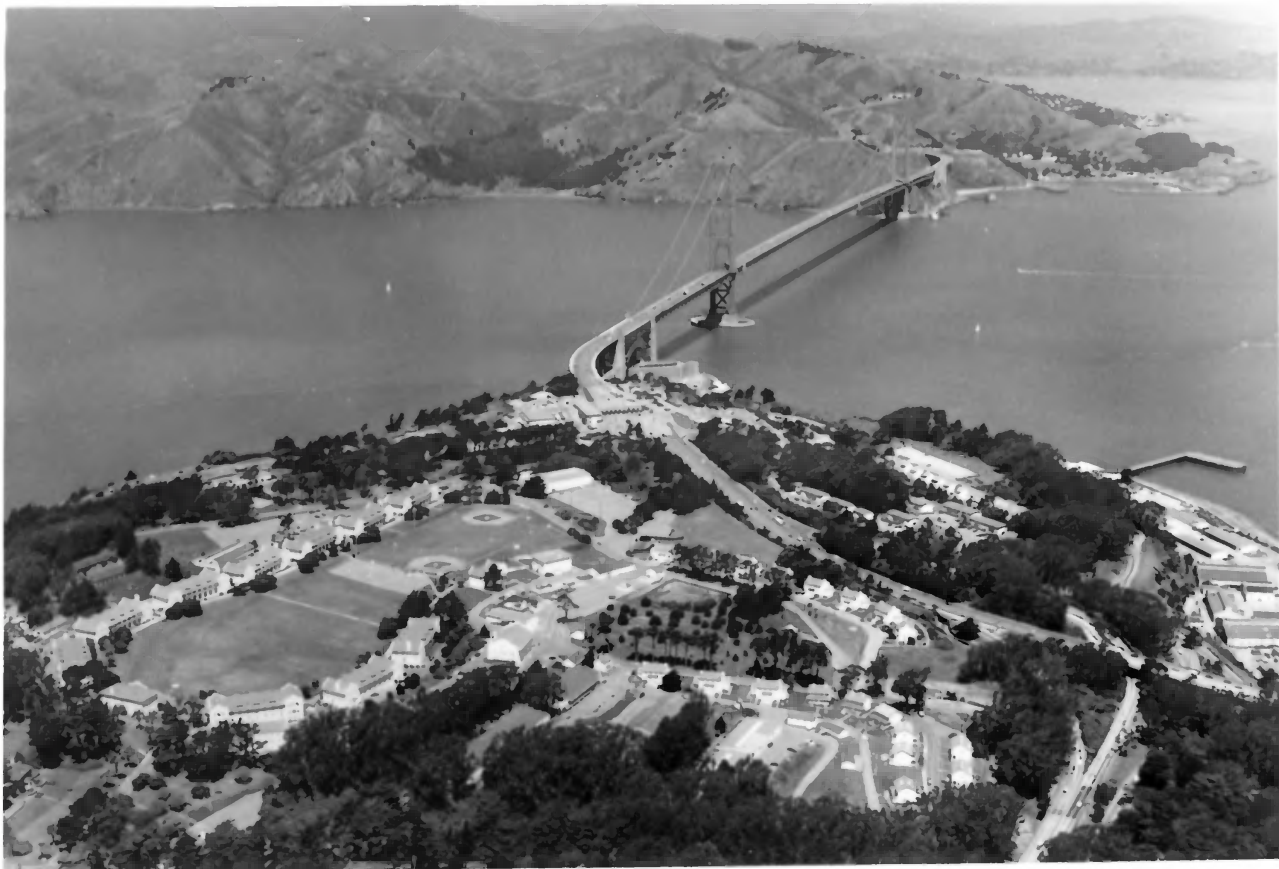


1. A GORGAS AVENUE WAREHOUSE  
PRESIDIO OF SAN FRANCISCO
2. SAN FRANCISCO, CALIFORNIA
3. NATIONAL PARK SERVICE PHOTO BY GORDON CHAPPELL
4. JUNE 1990
5. NEGATIVE AT NATIONAL PARK SERVICE WESTERN REGIONAL OFFICE
6. WAREHOUSE NO. 1162, BUILT 1919  
VIEW TOWARD EAST
7. PHOTO NO. 47 OF 78

BLDG, NO, 1162



1. DETAIL OF A WOOD FRAME WAREHOUSE  
PRESIDIO OF SAN FRANCISCO
2. SAN FRANCISCO, CALIFORNIA
3. PHOTO BY GORDON CHAPPELL
4. JUNE 1990
5. NEGATIVE AT NATIONAL PARK SERVICE  
WESTERN REGIONAL OFFICE
6. DETAIL OF LOADING DOCK OF  
WAREHOUSE NO. 1162, BUILT IN 1919,  
ON GORGAS AVENUE
7. VIEW TOWARD EAST OF BLDG. NO. 1162
7. PHOTO NO. 48 OF 78



1. FORT WINFIELD SCOTT AND THE GOLDEN GATE BRIDGE 1200-SERIES BUILDINGS  
PRESIDIO OF SAN FRANCISCO
2. SAN FRANCISCO, CALIFORNIA
3. U.S. ARMY PHOTO
4. 1989.
5. COPY NEGATIVE AT NATIONAL PARK SERVICE  
WESTERN REGIONAL OFFICE
6. VIEW TOWARD NORTHWEST OF FORT POINT AND THE GOLDEN GATE STRAIT,  
AND THE NORTHERN PART OF FORT WINFIELD SCOTT AND  
THE WESTERN END OF CRISSY FIELD. NOTE GOLDEN GATE BRIDGE,
7. PHOTO NO. 99 OF 98



BLDGS. NOS. 1216, 1217, 1218

1. FORT WINFIELD SCOTT 1 OF 5  
PRESIDIO OF SAN FRANCISCO
2. SAN FRANCISCO, CALIFORNIA
3. NATIONAL PARK SERVICE PHOTO  
BY GORDON CHAPPELL
4. JULY 1991
5. NEGATIVE AT NATIONAL PARK SERVICE  
WESTERN REGIONAL OFFICE
6. FORT WINFIELD SCOTT PARADE GROUND AND  
(LEFT TO RIGHT) BLDGS, NOS, 1216, 1217, 1218,  
TWO BARRACKS AND A MESS HALL. - VIEW TOWARD SOUTHEAST
7. PHOTO NO, 50 OF 98





1. FORT WINFIELD SCOTT . . . . . 2 OF 5 . . . . . BLDGS 1216, 1217, 1218  
PRESIDIO OF SAN FRANCISCO
2. SAN FRANCISCO, CALIFORNIA
3. NATIONAL PARK SERVICE PHOTO  
BY GORDON CHAPPELL
4. JULY 1991
5. NEGATIVE AT NATIONAL PARK SERVICE  
WESTERN REGIONAL OFFICE
6. FORT WINFIELD SCOTT PARADE GROUND AND  
(LEFT TO RIGHT) BLDGS, NOS. 1216, 1217, 1218  
TWO BARRACKS AND A MESS HALL - VIEW TOWARD SOUTHEAST
7. PHOTO NO. 51 OF 78



1. FORT WINFIELD SCOTT PARADE GROUND - 3 OF 5  
PRESIDIO OF SAN FRANCISCO - BLDGS. NOS. 1218, 1201, 1202
2. SAN FRANCISCO, CALIFORNIA
3. NATIONAL PARK SERVICE PHOTO BY GORDON CHAPPELL
4. JUNE 1992
5. NEGATIVE AT NATIONAL PARK SERVICE WESTERN REGIONAL OFFICE
6. LEFT TO RIGHT, BARRACKS NO. 1218, HEADQUARTERS NO. 1201,  
BARRACKS NO. 1202 - VIEW DUE SOUTH
7. PHOTO NO. 52 OF 78



1. FORT WINFIELD SCOTT                      4 OF 5                      BLDGS. NOS. 1202-1204  
PRESIDIO OF SAN FRANCISCO
2. SAN FRANCISCO, CALIFORNIA
3. NATIONAL PARK SERVICE PHOTO BY GORDON CHAPPELL
4. JUNE 1992
5. NEGATIVE AT NATIONAL PARK SERVICE WESTERN REGIONAL OFFICE
6. FORT WINFIELD SCOTT BARRACKS (LEFT TO RIGHT) 1202, 1203, 1204  
VIEW TOWARD SOUTH-SOUTHWEST; NO. 1204 BUILT IN 1911, OTHERS, 1910
7. PHOTO NO. 53 OF 78



1. FORT WINFIELD SCOTT 5 OF 5 BLDGS. NOS. 1203, 1204, 1205  
PRESIDIO OF SAN FRANCISCO
2. SAN FRANCISCO, CALIFORNIA
3. NATIONAL PARK SERVICE PHOTO BY GORDON CHARPELL
4. JUNE 1992
5. NEGATIVE AT NATIONAL PARK SERVICE WESTERN REGIONAL OFFICE
6. BARRACKS (LEFT TO RIGHT) NOS. 1203, 1204, 1205
7. PHOTO NO. 54 OF 78





1. FORT WINFIELD SLOTT DUPLEX FOR TWO ENLISTED PERSONNEL AND  
THEIR FAMILIES BLDG. NO. 1251  
PRESIDIO OF SAN FRANCISCO
2. SAN FRANCISCO, CALIFORNIA
3. NATIONAL PARK SERVICE PHOTO BY GORDON CHAPPELL
4. JULY 1992
5. NEGATIVE AT NATIONAL PARK SERVICE WESTERN REGIONAL OFFICE
6. BUILDING NO. 1261 ON RUCKMAN AVENUE, BUILT 1909  
VIEW TOWARD SOUTHWEST
7. PHOTO NO. 55 OF 78



1. FORT WINFIELD SCOTT ENLISTED FAMILY HOUSING  
PRESIDIO OF SAN FRANCISCO BLDGS. NOS. 1261, 1262, 1265, 1266
2. SAN FRANCISCO, CALIFORNIA
3. NATIONAL PARK SERVICE PHOTO BY GORDON CHAPPELL
4. JULY 1992
5. NEGATIVE AT NATIONAL PARK SERVICE WESTERN REGIONAL OFFICE
6. LEFT TO RIGHT, BLDGS. NOS. 1261, 1262, 1265, 1266  
ON RUCKMAN AVENUE, VIEW TOWARD SOUTH - BUILT IN 1909
7. PHOTO NO 56 OF 78



1. FORT WINFIELD SCOTT SOLDIERS' DUPLEX BLDG. NO. 1270  
PRESIDIO OF SAN FRANCISCO
2. SAN FRANCISCO, CALIFORNIA
3. NATIONAL PARK SERVICE PHOTO BY GORDON CHAPPELL
4. JULY 1992
5. NEGATIVE AT NATIONAL PARK SERVICE, WESTERN REGIONAL OFFICE
6. VIEW TOWARD SOUTHEAST OF ENLISTED FAMILY HOUSING DUPLEX NO. 1270  
ON RUCKMAN AVENUE, BUILT 1921
7. PHOTO NO. 57 OF 78



1. ENLISTED FAMILY HOUSING  
FORT WINFIELD SCOTT  
PRESIDIO OF SAN FRANCISCO
  2. SAN FRANCISCO, CALIFORNIA
  3. NATIONAL PARK SERVICE PHOTO BY GORDON CHAPPELL
  4. MAY 1992
  5. NEGATIVE AT NATIONAL PARK SERVICE WESTERN REGIONAL OFFICE
  6. VIEW SOUTHEAST OF MARRIED ENLISTED MEN'S DUPLEXES NOS,  
1272 (LEFT) AND 1273 AT INTERSECTION OF STOREY ROAD  
AND RUCKMAN AVENUE, BUILT IN 1912
  7. PHOTO NO. 58 OF 78
- BLDGS. NO, 1272,  
1273





1. ENLISTED FAMILY HOUSING ON RUCKMAN AVENUE  
FORT WINFIELD SCOTT BLDGS, NOS, 1275  
PRESIDIO OF SAN FRANCISCO 1276, 1277
2. SAN FRANCISCO, CALIFORNIA
3. NATIONAL PARK SERVICE PHOTO BY GORDON CHAPPELL
4. MAY 1992
5. NEGATIVE AT NATIONAL PARK SERVICE WESTERN REGIONAL OFFICE
6. DUPLEXES FOR MARRIED ENLISTED PERSONNEL BUILT IN 1933,  
NOS. (LEFT TO RIGHT) 1275, 1276, 1277, VIEW TOWARD SOUTHWEST  
NOTE. STately ROW OF MONTEREY CYPRESS TREES ABOUT 60 YEARS  
OLD
7. PHOTO NO. 59 OF 78



1. KOBBE AVENUE OFFICERS' QUARTERS  
PRESIDIO OF SAN FRANCISCO

BLDGs. NOS. 1302, 1304  
1308, 1310

2. SAN FRANCISCO, CALIFORNIA

3. NATIONAL PARK SERVICE PHOTO BY JET LOWE

4. SEPTEMBER 1981

5. NEGATIVE AT NATIONAL PARK SERVICE WESTERN REGIONAL OFFICE

6. OFFICERS' QUARTERS (LEFT TO RIGHT) NOS. 1302 AND 1304 (BUILT IN  
1902), 1308 AND 1310 (BUILT IN 1909) VIEW TOWARD SOUTH

7. PHOTO NO. 60 OF 78



1. FORT WINFIELD SCOTT OFFICERS' ROW, KOBBE AVENUE  
PRESIDIO OF SAN FRANCISCO

BLDG. NO. 1304

2. SAN FRANCISCO, CALIFORNIA

3. NATIONAL PARK SERVICE PHOTO BY  
GORDON CHAPPELL

4. JUNE 1989

5. NEGATIVE AT NATIONAL PARK SERVICE  
WESTERN REGIONAL OFFICE

6. DUPLEX OFFICERS' QUARTERS NO. 1304  
ON KOBBE AVENUE, BUILT 1902, VIEW TOWARD SOUTH

7. PHOTO NO. 61 OF 78



1. FORT. WINFIELD SCOTT OFFICERS' ROW, KOBBE AVENUE  
PRESIDIO OF SAN FRANCISCO

BLDGS. NOS.  
1322, 1324, 1326, 1328

2. SAN FRANCISCO, CALIFORNIA

3. PHOTO BY GORDON CHAPPELL

4. JUNE 1990

5. NEGATIVE AT NATIONAL PARK SERVICE  
WESTERN REGIONAL OFFICE

6. DUPLEX OFFICERS' QUARTERS ON KOBBE AVENUE  
BUILT IN 1912

VIEW TOWARDS EAST OF (LEFT TO RIGHT)

BLDGS. NOS. 1322, 1324, 1326, 1328

7. PHOTO NO. 62 OF 78





1. FORT WINFIELD SCOTT OFFICERS' QUARTERS BLDG. NO. 1328  
PRESIDIO OF SAN FRANCISCO
2. SAN FRANCISCO, CALIFORNIA
3. NATIONAL PARK SERVICE PHOTO BY GORDON CHAPPELL
4. APRIL 1971
5. NEGATIVE AT NATIONAL PARK SERVICE WESTERN REGIONAL OFFICE
6. A DUPLEX OFFICERS' QUARTERS ON KOBBE AVENUE BUILT IN 1912  
VIEW TOWARD SOUTHWEST OF BLDG, NO. 1328
7. PHOTO NO. 63 OF 98



1. FORT WINFIELD SCOTT OFFICERS' QUARTERS  
PRESIDIO OF SAN FRANCISCO
2. SAN FRANCISCO, CALIFORNIA
3. NATIONAL PARK SERVICE PHOTO  
BY GORDON CHAPPELL
4. MARCH 1991
5. NEGATIVE AT NATIONAL PARK SERVICE  
WESTERN REGIONAL OFFICE
6. OFFICERS' QUARTERS NO. 1334 ON KOBBE AVENUE,  
BUILT 1912, VIEW TOWARD SOUTHWEST
7. PHOTO NO. 65 OF 78

Greenough Ave

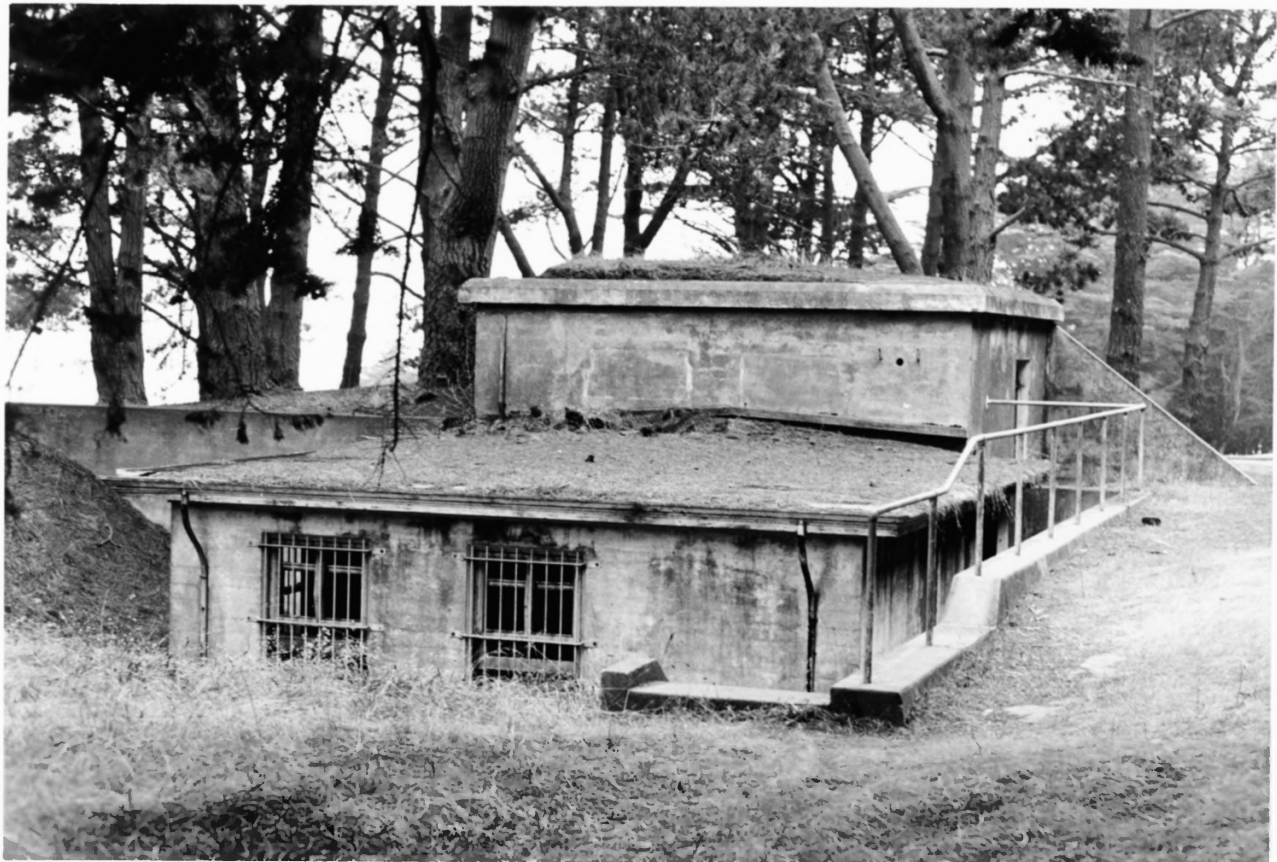


1. FORT WINFIELD SCOTT, KOBBE AVENUE STOREHOUSES  
PRESIDIO OF SAN FRANCISCO  
BLDGS. NOS. 1330  
1334, 1338, 1339, 1340
2. SAN FRANCISCO, CALIFORNIA
3. NATIONAL PARK SERVICE PHOTO  
BY GORDON CHAPPELL
4. JULY 1990
5. NEGATIVE AT NATIONAL PARK SERVICE  
WESTERN REGIONAL OFFICE
6. VIEW EAST ON KOBBE AVENUE FROM  
VICINITY OF GREENOUGH AVENUE.  
LEFT TO RIGHT: BLDGS. NOS. 1339 (ORDNANCE  
REPAIR SHOP), 1330 (BARNARD HALL), 1338 (STORAGE, BUILT 1902),  
1334 (OFFICERS' QUARTERS, BUILT 1912, FRAGMENT VISIBLE THROUGH TREES),  
1340 (ORDNANCE STORAGE, 1917, CORNER ONLY VISIBLE)
7. PHOTO NO. 66 OF 98

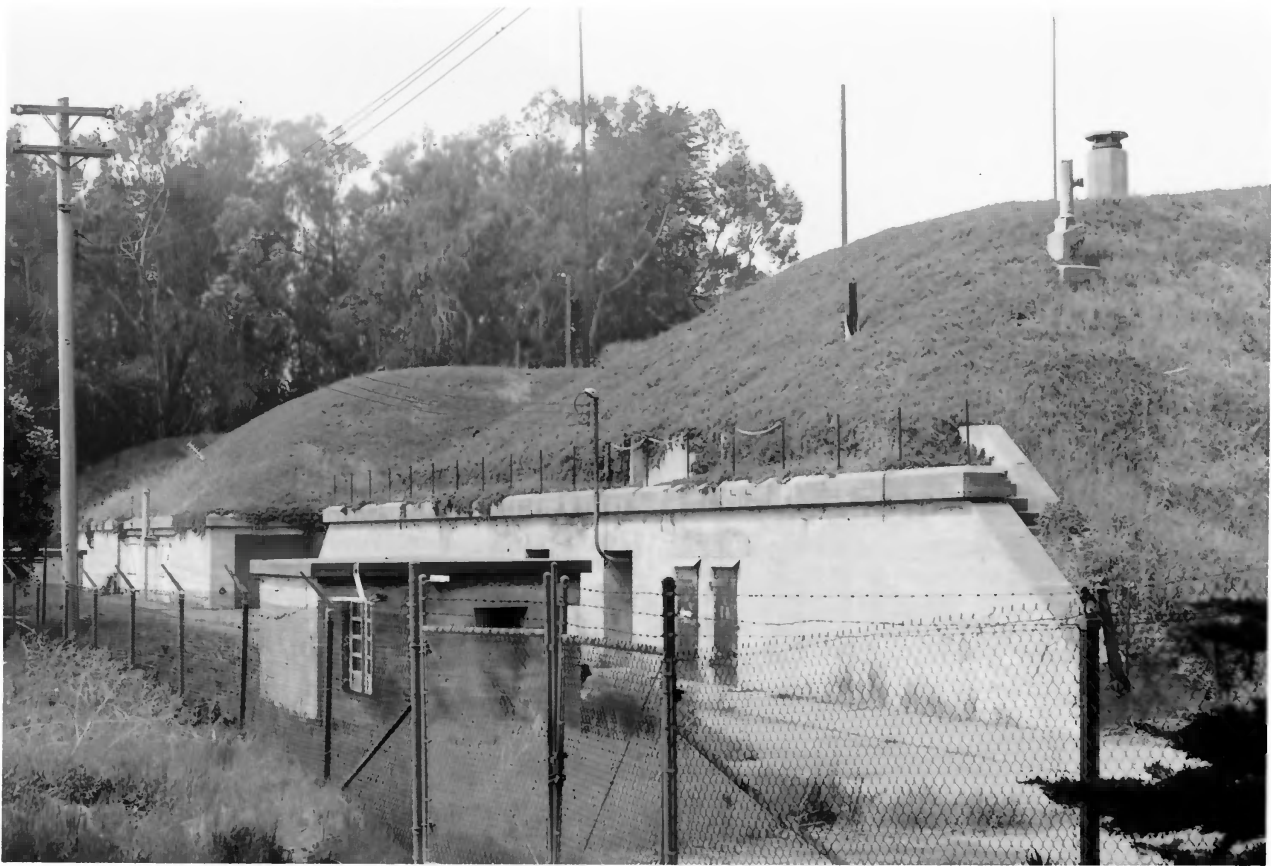


1. FORT WINFIELD SCOTT BASE END STATION  
PRESIDIO OF SAN FRANCISCO
2. SAN FRANCISCO, CALIFORNIA
3. NATIONAL PARK SERVICE PHOTO BY  
GORDON CHAPPELL
4. JULY 1990
5. NEGATIVE AT NATIONAL PARK SERVICE  
WESTERN REGIONAL OFFICE
6. FIRE CONTROL STATION FOR COAST ARTILLERY, WITH PLOTTING ROOM  
BUILT 1911, FRONT VIEW - ON WASHINGTON BOULEVARD.-  
VIEW TOWARD SOUTHEAST OF BLDG. NO. 1344
7. PHOTO NO. 67 OF 98





1. FORT WINFIELD SCOTT, BASE END STATION  
PRESIDIO OF SAN FRANCISCO
2. SAN FRANCISCO, CALIFORNIA
3. NATIONAL PARK SERVICE PHOTO BY  
GORDON CHAPPELL
4. JULY 1990
5. NEGATIVE AT NATIONAL PARK SERVICE  
WESTERN REGIONAL OFFICE
6. FIRE CONTROL STATION FOR COAST ARTILLERY,  
BUILT 1911, REAR VIEW - ON WASHINGTON BOULEVARD  
VIEW TOWARD NORTHWEST OF BLDG. NO. 1344
7. PHOTO NO. 68 OF 78
- BLDG. NO. 1344



1. FORT WINFIELD SCOTT BATTERIES MCKINNON/STOTSENBERG BLDG. NO. 1430  
PRESIDIO OF SAN FRANCISCO
2. SAN FRANCISCO, CALIFORNIA
3. NATIONAL PARK SERVICE PHOTO  
BY GORDON CHAPPELL
4. AUGUST 1991
5. NEGATIVE AT NATIONAL PARK SERVICE  
WESTERN REGIONAL OFFICE
6. MORTAR BATTERIES STOTSENBERG - MCKINNON BUILT 1898  
VIEW FROM EAST - SOUTHEAST - STRUCTURE NO. 1430
7. PHOTO NO. 69 OF 78



1. FORT WINFIELD SCOTT, BATTERY CROSBY  
PRESIDIO OF SAN FRANCISCO
2. SAN FRANCISCO, CALIFORNIA

BLDG. NO. 1630

3. NATIONAL PARK SERVICE PHOTO BY GORDON CHAPPELL

4. JUNE 1991

5. NEGATIVE AT NATIONAL PARK SERVICE WESTERN REGIONAL OFFICE

6. BATTERY CROSBY IN FOREGROUND, GOLDEN GATE STRAIT  
AND BRIDGE IN BACKGROUND.

VIEW NORTH-NORTHEAST FROM BLDG. NO. 1630 TO

BLDG. NO. 999, FORT POINT, UNDER ARCH AT NEAR END OF BRIDGE

7. PHOTO NO. 70 OF 78



1. FORT WINFIELD SCOTT, BATTERY GODFREY STRUCTURE NO. 1647  
PRESIDIO OF SAN FRANCISCO
2. SAN FRANCISCO, CALIFORNIA
3. NATIONAL PARK SERVICE PHOTO BY GORDON CHAPPELL
4. SEPTEMBER 1990
5. NEGATIVE AT NATIONAL PARK SERVICE  
WESTERN REGIONAL OFFICE
6. BATTERY GODFREY, BUILT 1892-1896  
FIRST HEAVY CALIBER RIFLE (12-INCH, BARBETTE CARRIAGE)  
BATTERY COMPLETED AND ARMED IN THE UNITED STATES  
VIEW SOUTH OF STRUCTURE NO. 1647
7. PHOTO NO. 71 OF 78





1. FORT WINFIELD SCOTT, BATTERY GODFREY  
PRESIDIO OF SAN FRANCISCO
2. SAN FRANCISCO, CALIFORNIA
3. NATIONAL PARK SERVICE PHOTO BY GORDON CHAPPELL
4. SEPTEMBER 1990
5. NEGATIVE AT NATIONAL PARK SERVICE WESTERN REGIONAL OFFICE
6. BATTERY GODFREY, BUILT 1892-1896, VIEW TOWARD SOUTH OF  
REAR OF BATTERY; THE "COVERED WAY" IS TO THE RIGHT  
OF THE NEAREST RAILING.
7. PHOTO NO. 72 OF 78,



1. FORT WINFIELD SCOTT, BATTERY BOUTELLE  
PRESIDIO OF SAN FRANCISCO
2. SAN FRANCISCO, CALIFORNIA
3. NATIONAL PARK SERVICE PHOTO BY GORDON CHAPPELL
4. SEPTEMBER 1990
5. NEGATIVE AT NATIONAL PARK SERVICE WESTERN REGIONAL OFFICE
6. BATTERY BOUTELLE, BUILT 1898 FOR THREE 5-INCH PILLAR MOUNT  
GUNS  
VIEW WEST OF STRUCTURE NO. 1651
7. PHOTO NO. 73 OF 78



1. BATTERY MARCUS MILLER, FORT WINFIELD SCOTT STRUCTURE NO. 1660  
PRESIDIO OF SAN FRANCISCO
2. SAN FRANCISCO, CALIFORNIA
3. NATIONAL PARK SERVICE PHOTO BY GORDON CHAPPELL
4. JUNE 1991
5. NEGATIVE AT NATIONAL PARK SERVICE WESTERN REGIONAL OFFICE
6. EMPLACEMENT FOR A 10-INCH BREECHLOADING RIFLE ON A  
BUFFINGTON-CROZIER CARRIAGE; CONSTRUCTION BEGAN ON THIS  
BATTERY ABOUT JUNE 2, 1891, AND IT IS BELIEVED  
THE FIRST ENDICOTT-TYPE HEAVY CALIBER RIFLE BATTERY  
TO BE COMMENCED IN THE UNITED STATES, THOUGH  
NEARBY BATTERY GOOREY WAS COMPLETED FIRST,  
ARMED IN 1897, VIEW TOWARD NORTH OF STRUCTURE NO. 1660.
7. PHOTO NO 74 OF 78



1. U.S. PUBLIC HEALTH SERVICE HOSPITAL  
PRESIDIO OF SAN FRANCISCO

BLDG. NO. 1801,  
STRUCTURES 1800, 1890

2. SAN FRANCISCO, CALIFORNIA

3. NATIONAL PARK SERVICE PHOTO BY GORDON CHAPPELL

4. MARCH 1992

5. NEGATIVE AT NATIONAL PARK SERVICE WESTERN REGIONAL OFFICE

6. HOSPITAL BUILDING NO. 1801 BUILT 1932 WITH WINGS  
ADDED IN 1952 (CONTRIBUTING TO NHL, BUT FRONT WINGS  
NON-CONTRIBUTING), FLAGPOLE NO. 1800, BUILT 1952  
(NON-CONTRIBUTING), AND MAIN GATE AT 15TH AVENUE, NO. 1890  
BUILT 1952 (NON-CONTRIBUTING) VIEW TOWARD NORTH

7. PHOTO NO. 95 OF 98





1. U. S. COAST GUARD LIFEBOAT STATION (STATION FORT POINT)  
PRESIDIO OF SAN FRANCISCO
2. SAN FRANCISCO, CALIFORNIA
3. NATIONAL PARK SERVICE PHOTO BY GORDON CHAPPELL
4. JUNE 1990
5. NEGATIVE AT NATIONAL PARK SERVICE  
WESTERN REGIONAL OFFICE
6. ALL BUILDINGS NORTH OF SHRUBBERY AND PALMS  
ARE OLD U. S. COAST GUARD "STATION FORT POINT" PARTIALLY  
ABANDONED 1990; TWO BUILDINGS TO LEFT OF  
FLAGPOLE DATE FROM 1889-1890 U. S. LIFE SAVING  
SERVICE'S FORT POINT LIFE SAVING STATION, FIRST  
BUILDING TO RIGHT OF FLAGPOLE DATES FROM ABOUT 1915,  
VIEW TOWARD NORTH-NORTHEAST IN PRESIDIO'S CRISSEY FIELD AREA
7. PHOTO NO. 76 OF 78.

NOTE - THIS PHOTO ALSO FITS BETWEEN  
PHOTOS 36 AND 37 (THE CRISSEY FIELD SERIES)  
BUT IS INCLUDED HERE TO ILLUSTRATE SEPARATELY  
THE U. S. COAST GUARD COMPLEX



1. MOUNTAIN LAKE  
PRESIDIO OF SAN FRANCISCO
2. SAN FRANCISCO, CALIFORNIA
3. NATIONAL PARK SERVICE PHOTO  
BY GORDON CHAPPELL
4. MAY 1991
5. NEGATIVE AT NATIONAL PARK SERVICE  
WESTERN REGIONAL OFFICE
6. MOUNTAIN LAKE NEAR WHICH ANZA CAMPED IN 1776  
A NATURAL, SPRING-FED LAKE VIEW FROM SOUTH - NOTE PRESIDIO FOREST
7. PHOTO 77 OF 78



1. PRESIDIO GOLF COURSE  
PRESIDIO OF SAN FRANCISCO
2. SAN FRANCISCO, CALIFORNIA
3. NATIONAL PARK SERVICE PHOTO  
BY GORDON CHAPPELL
4. MAY 1991
5. NEGATIVE AT NATIONAL PARK SERVICE  
WESTERN REGIONAL OFFICE
6. PRESIDIO GOLF COURSE, 9TH HOLE, VIEW TOWARD NORTHWEST  
NOTE EUCALYPTUS (BLUE GUM) TREES AT RIGHT, MONTEREY CYPRESS AT LEFT
7. PHOTO NO. 78 OF 78