



#1 7/25

CAMP CURRY  
HISTORIC DISTRICT

CAMP SEQUOIA (CURRY)  
Mariposa County, California

1899

PHOTO FROM YOSEMITE & ITS INNKEEPERS

3290

11 SEP 1979

POC  
NOV 1 1979



CAMP CURRY  
HISTORIC DISTRICT

# 2425

CAMP CURRY

Mariposa County, Cal

CIRCA 1904

ORIGINAL REGISTRATION OFFICE  
(NOTE LACK OF STAIRS)

3290 Photo from Yosemite \$175 INNKEEPERS

11 SEP 1979

DOE  
NOV 1 1979



Photo # 3925

CAMP CURRY HISTORIC  
DISTRICT

Mariposa County, California

PRE 1920 TENT ACCOMMODATIONS

NOTE LACK OF DOORS

Photo from "Yosemite AND ITS INNKEEPERS"

3290

11 SEP 1979

NOV 1 1979  
DOE



# 495

CAMP CURRY HISTORIC  
DISTRICT

PRE-1927

Mariposa County, California

Photo from COVER OF Yosemite  
AND ITS INN KEEPERS

STAIRS ADDED POST-STAGECOACH DAYS

3290

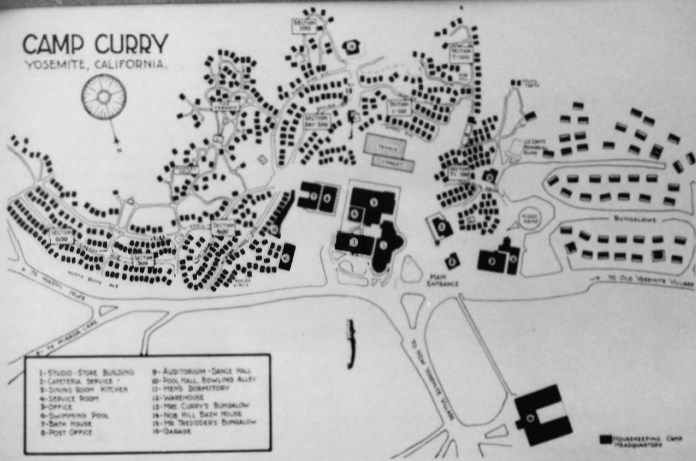
11 SEP 1979

NOV 1 1979  
DDE



# CAMP CURRY

YOSEMITE, CALIFORNIA.



- |                         |                             |
|-------------------------|-----------------------------|
| 1-STUDIO-STORE BUILDING | 9-AUDITORIUM-DANCE HALL     |
| 2-CAFETERIA SERVICE     | 10-POOL HALL, BOWLING ALLEY |
| 3-DINING ROOM KITCHEN   | 11-MEN'S DORMITORY          |
| 4-SERVICE BOOTH         | 12-WAREHOUSE                |
| 5-OFFICE                | 13-MR. CURRY'S BUNGALOW     |
| 6-SWIMMING POOL         | 14-NOR HILL BATH HOUSE      |
| 7-BATH HOUSE            | 15-MR. TRESSIDER'S BUNGALOW |
| 8-POST OFFICE           | 16-GARAGE                   |

■ HOUSEKEEPING CAMP HEADQUARTERS

# 5/25

CAMP CURRY  
HISTORIC DISTRICT

Mariposa County, California

MAP OF CAMP CURRY

C. 1925

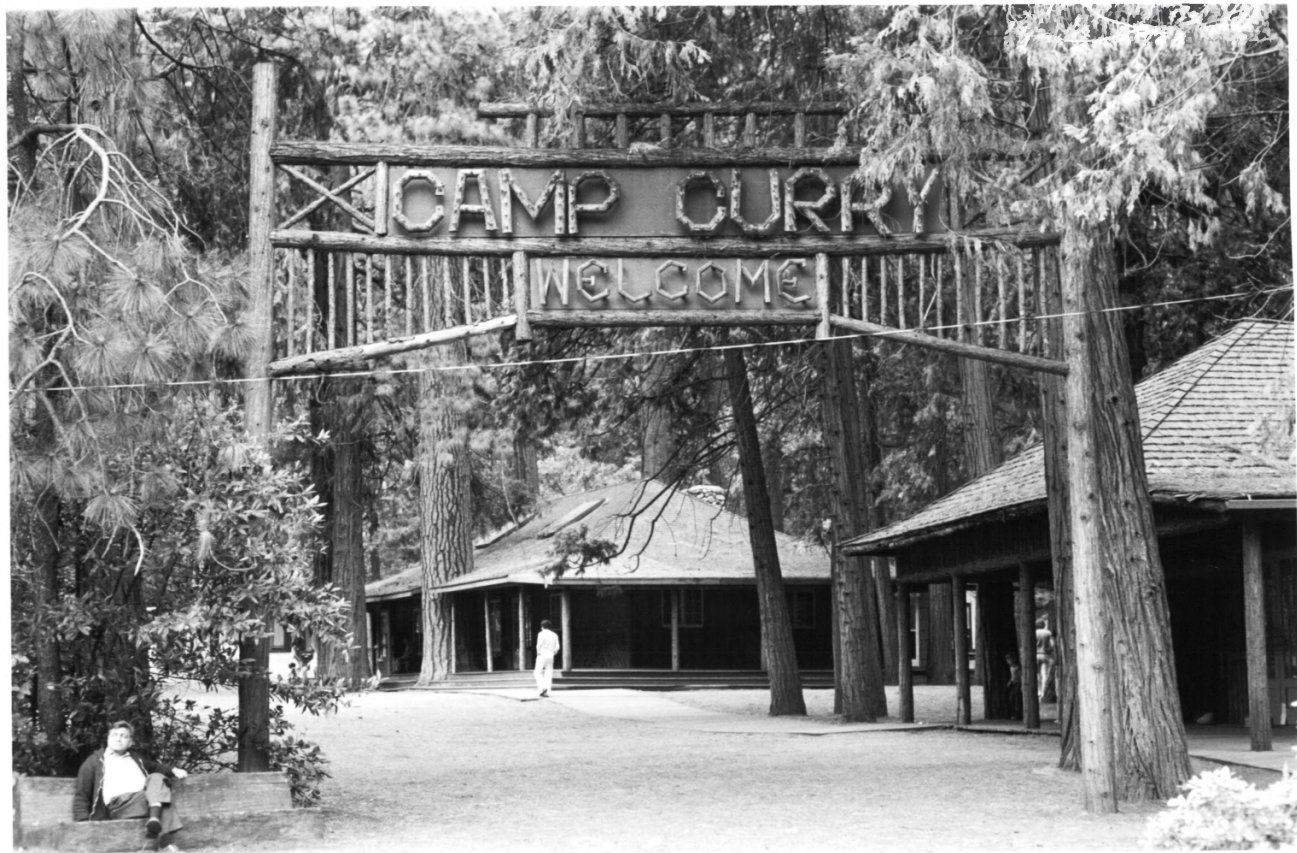
Photograph from "Yosemite AND ITS  
INNKEEPERS"

3290

FOSTER CURRY CABIN IS  
NOTED AS "MR. TRESIDERS BUNGALOW"

11 SEP 1979

DOE - 11-1-79



# 6925

CAMP CURRY HISTORIC DISTRICT  
Mariposa County, California  
ENTRANCE SIGN

VIEW TO SOUTH

YOSEMITE NATIONAL PARK  
CALIFORNIA

NATIONAL PARK SERVICE PHOTO  
BY GORDON CHAPPELL

11 SEP 1979

1977

DOB  
NOV 1 1979



# 7 of 25

CAMP CURRY HISTORIC DISTRICT  
Mariposa County, California  
ORIGINAL REGISTRATION OFFICE

VIEW TO SOUTH  
NORTH, EAST FACADES

YOSEMITE NATIONAL PARK,  
CALIFORNIA

NATIONAL PARK SERVICE PHOTO  
BY GORDON CHAPPELL

1979

11 SEP 1979

DBE

NOV 1 1979



#8425

CAMP CURRY HISTORIC DISTRICT  
Mariposa County, California  
AMPITHEATRE ON SOUTH end of  
original REGISTRATION OFFICE  
(LOUNGE) VIEW TO NORTH

Yosemite National Park, CA  
NPS photo by Dean Shenk  
1976

11 SEP 1978

DOE  
NOV 1 1978





# 9425

CAMP CURRY HISTORIC DISTRICT  
Mariposa County, California  
REGISTRATION OFFICE (Original Post Office  
building with 1950's glass addition)

View to South, (NORTH FACADE)

Yosemite National Park, CA

NPS photo by Dean Shenk

1976

11 SEP 1979

DOE

NOV. 1, 1979



# 10 of 25

Mariposa County, California  
CAMP CURRY HISTORIC DISTRICT  
ORIGINAL (1929) DINING ROOM  
VIEW TO EAST (west facade)  
Photograph from "Yosemite and  
Its Innkeepers" by  
Shirley Sargent

3290

11 SEP 1979



# 11925

CAMP CURRY HISTORIC DISTRICT  
Mariposa County, California  
NEW CAFETERIA BUILDING (1975)

VIEW TO EAST (WEST FACADE)

Yosemite National Park, CA

NATIONAL PARK SERVICE PHOTO

BY DEAN SHEAK

11 SEP 1979

1976

DOE  
NOV 1 1979



\* 12

CAMP CURRY HISTORIC DISTRICT  
Mariposa County, California

GIFT SHOP (1976)

ADJACENT TO CAFETERIA BLDG

BUILT TO REPLACE ORIGINAL STUDIO AND CAFETERIA  
(DESTROYED BY FIRE 1975)

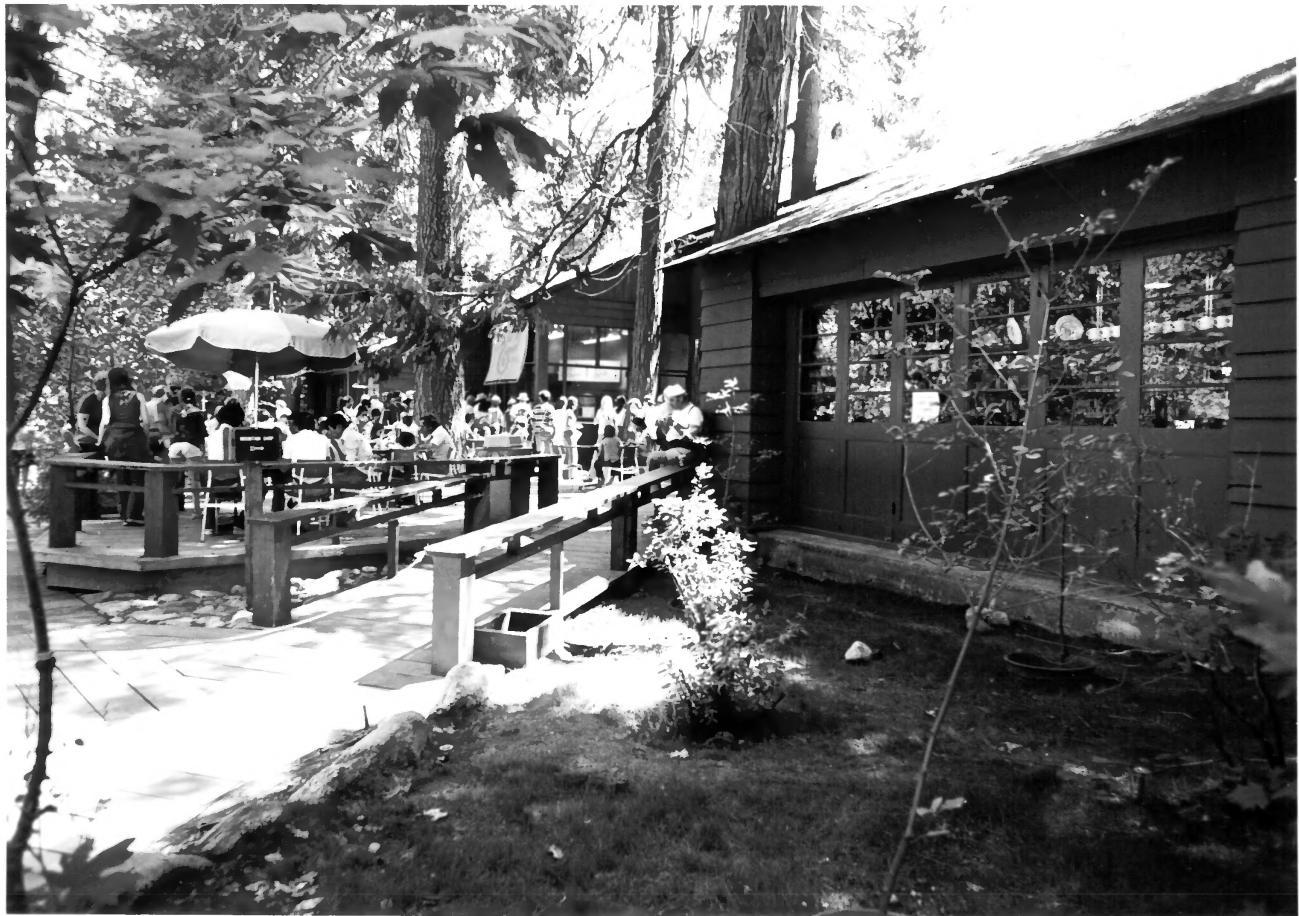
VIEW TO EAST / WEST FACADE

NPS photo by Dean Shenk

11 SEP 1979 1976

NOV 1 1979





#13 425

CAMP CURRY HISTORIC DISTRICT  
Mariposa County, California  
GIFT SHOP AND SNACK KIOSK

# VIEW TO SOUTH / NORTH FACADE

Yosemite National Park, CA

NPS photo by Dean Shenic

11 SEP 1979

1976

NOV 1 1979  
DGS



# 14725

CAMP CURRY HISTORIC  
DISTRICT

Mariposa County, California

MOTHER CURRY'S BUNGALOW  
c. 1918

FOSTER CURRY IN FOREGROUND  
SENNIE CURRY TO HIS RIGHT

3 2 9 0 CURRY DAUGHTERS ON PORCH.

Photo from Yosemite AND ITS INNKEEPERS.

11 SEP 1979

DOE

NOV 1 1979



# 15 of 25

CAMP CURRY HISTORIC DISTRICT

Mariposa County, California

MOTHER - CURRY'S BUNGALOW

VIEW TO SOUTH

YOSEMITE NATIONAL PARK  
CALIFORNIA

**11 SEP 1979**

NATIONAL PARK SERVICE PHOTO  
BY GORDON CHAPPEL

1977

DOE  
NOV 1 1979



#16/25

CAMP CURRY HISTORIC DISTRICT  
Mariposa County, California  
MOTHER CURRY'S BUNGALOW  
VIEW TO SOUTH

YOSEMITE NATIONAL PARK  
CALIFORNIA

NATIONAL PARK SERVICE PHOTO  
BY DEAN SHANK

11 SEP 1979

1976

NOV 1 1979  
DOE





#17 of 25

CAMP CURRY HISTORIC DISTRICT  
Mariposa County, California  
FOSTER CURRY BUNGALOW

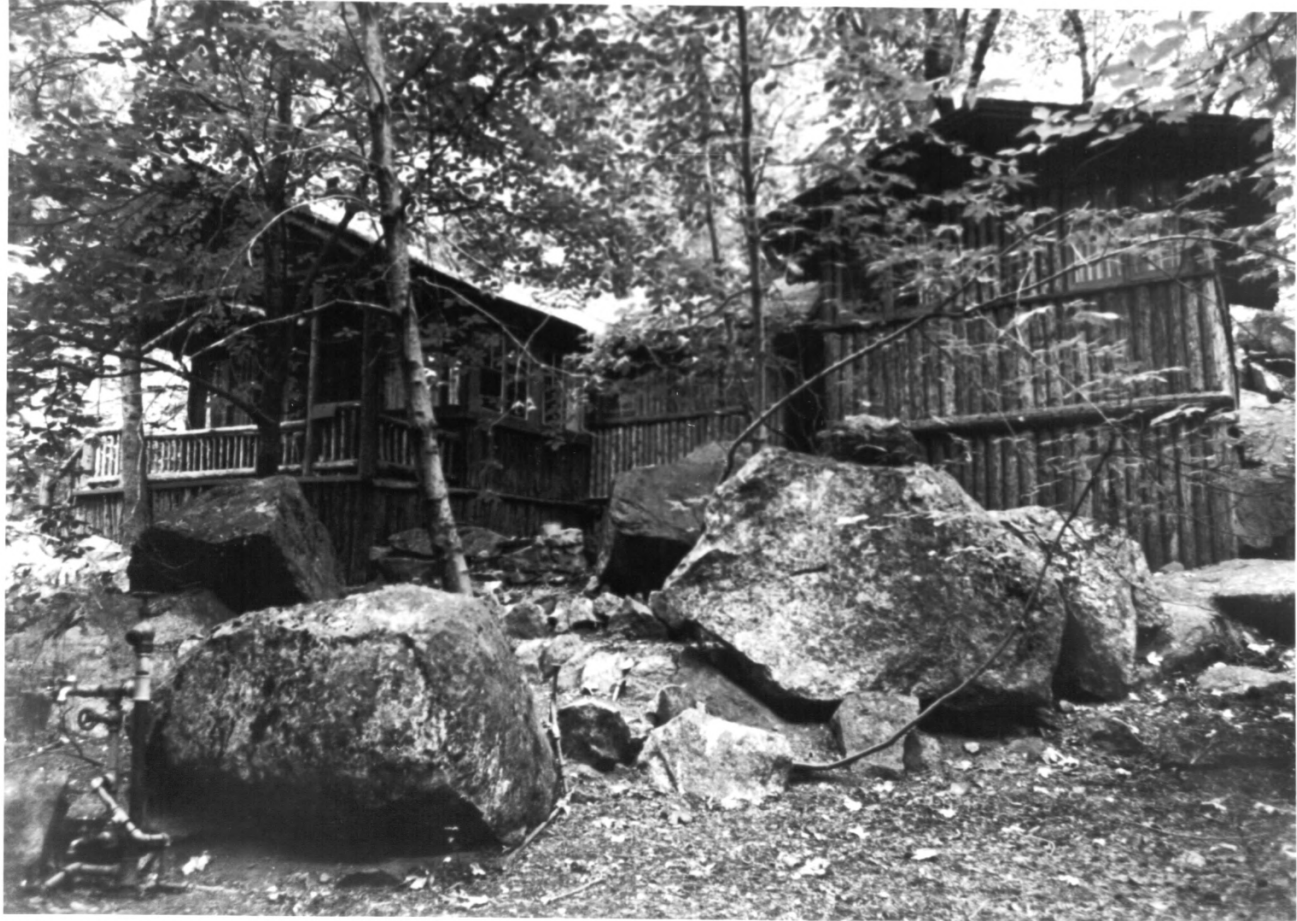
VIEW TO SOUTHWEST / NORTH FACADE

Yosemite National Park, CA

NPS photo by Dean Shenk

11 SEP 1979 1976

*die*  
NOV 1 1979



# 18 9/25

CAMP CURRY HISTORIC DISTRICT  
Mariposa County, California  
# FOSTER CURRY CABIN

VIEW TO EAST / SHOWS NORTH  
FACADE AND ELL ADDITION

Yosemite Nat'l Park, CA

NPS photo by Dean Shunk

11 SEP 1979

1976

NOV 1 1979  
DOE



# 19925

CAMP CURRY HISTORIC DISTRICT  
Mariposa County, California  
1920'S BUNGALOWS WITH BATH

View to east along a section of  
bungalows located in the western  
section of Camp Curry.

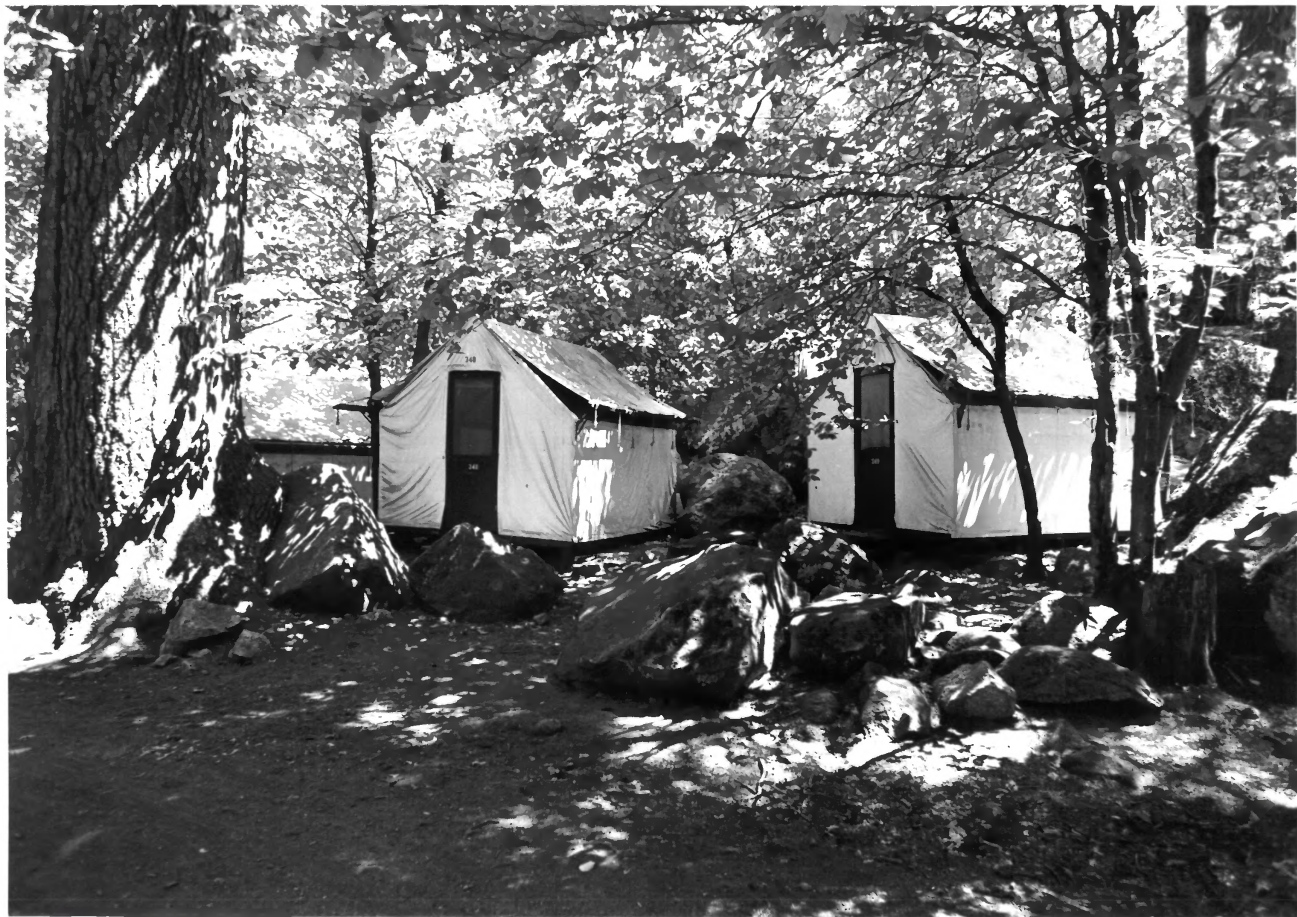
NPS photo by Dean Shenk

11 SEP 1979

1976

YOSEMITE NATIONAL PARK  
CALIFORNIA

DOE  
NOV 1 1979



#20425

CAMP CURRY HISTORIC DISTRICT  
Mariposa County, California  
GUEST TENT CABINS

VIEW TO SOUTH / NORTH FACADE

Yosemite Nat'l Park, CA

NPS photograph by Dean Shenk

1976

11 SEP 1979

NOV 1 1979  
DRC





# 21 of 25

CAMP CURRY HISTORIC DISTRICT  
Mariposa County, California  
CANVAS CABINS

VIEW TO EAST / NORTH-WEST FACADE

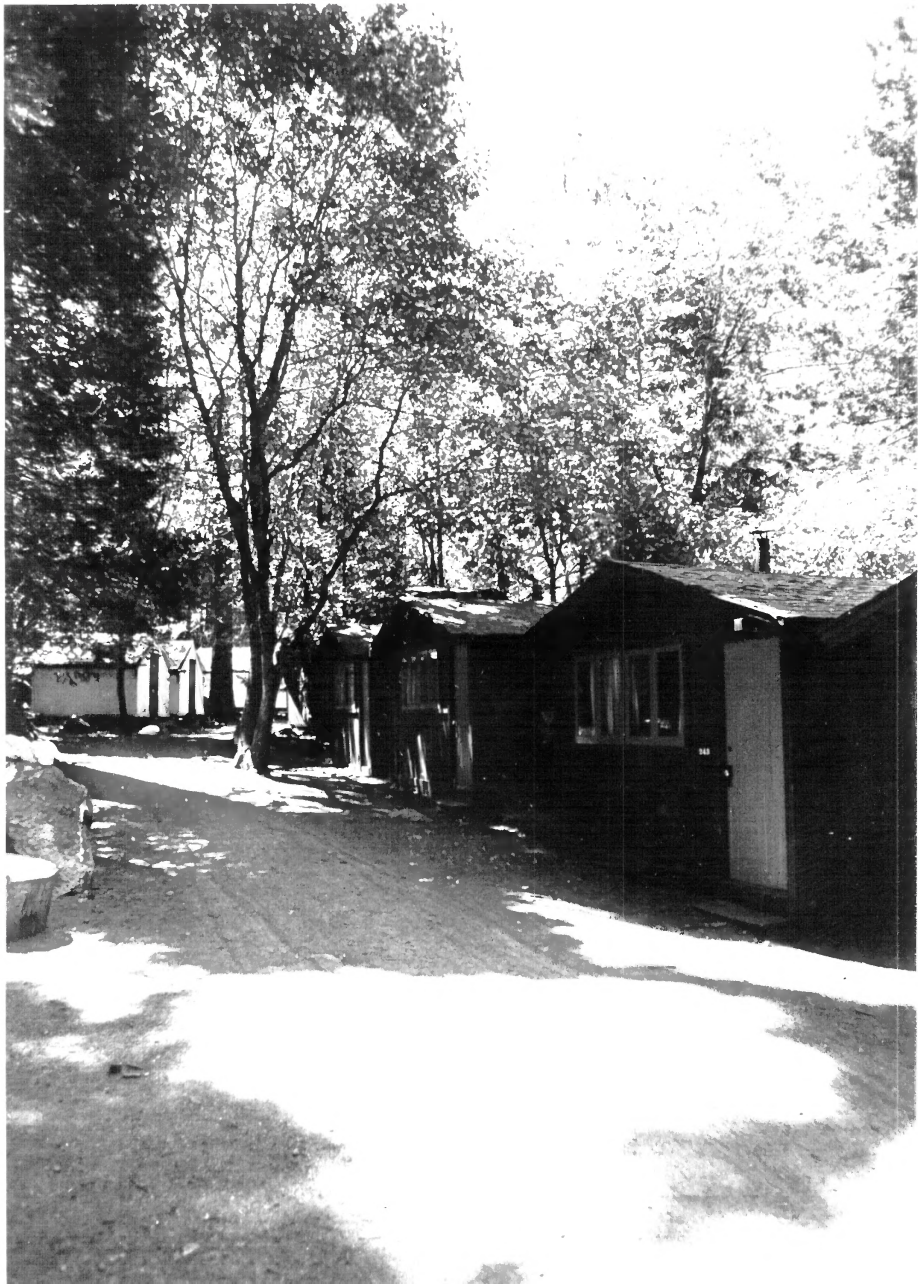
YOSEMITE NATIONAL PARK CALIFORNIA

Photo by Dean Shenk  
NPS

1976

11 SEP 1979

DOE  
NOV 1 1979



#22425

CAMP CURRY Historic District <sup>OLB</sup>  
Mariposa County, California  
CABINS WITHOUT BATHS AND <sup>300</sup> 1000  
TENT UNITS

—  
VIEW TO SOUTH / EAST FACADE  
OF CABINS  
—

Yosemite National Park, CA

NPS photograph by Dean Sherk

1976

11 SEP 1979



# 23425

CAMP CURRY HISTORIC DISTRICT

Mariposa County, California

Stoneman House Guest Apts.

(Original 1913 Dance Pavilion)

View to EAST / NORTH and West facades

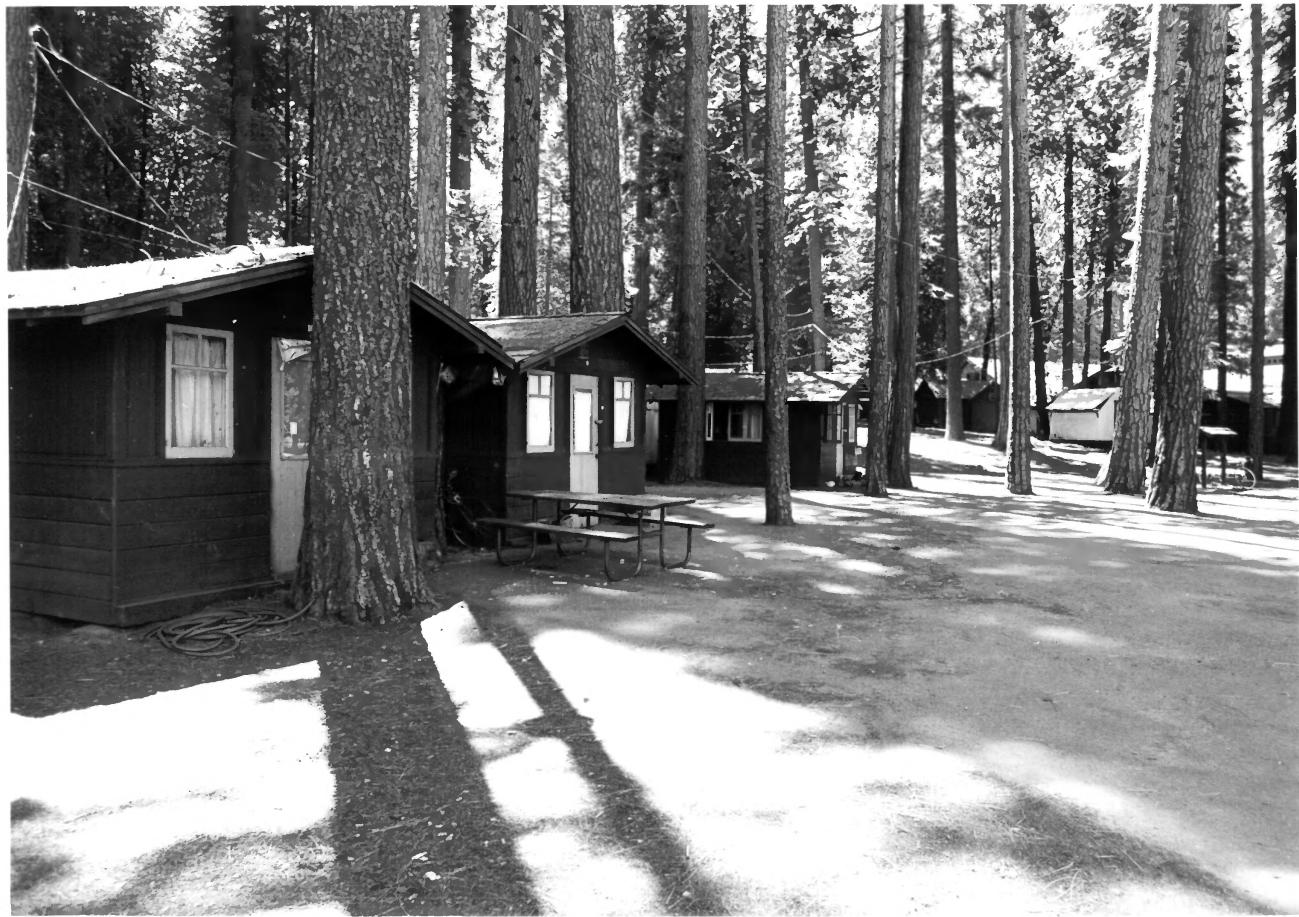
Yosemite Nat'l Park, CA

NPS Photo by Leslie Starr Hart

1979

11 SEP 1979

NOV 1 1979  
DOE



#24 / 25

CAMP CURRY HISTORIC DISTRICT  
Mariposa County, California  
EMPLOYEE CABINS WITHOUT BATH

11 SEP 1979

VIEW to <sup>south</sup> east / WEST FACADE

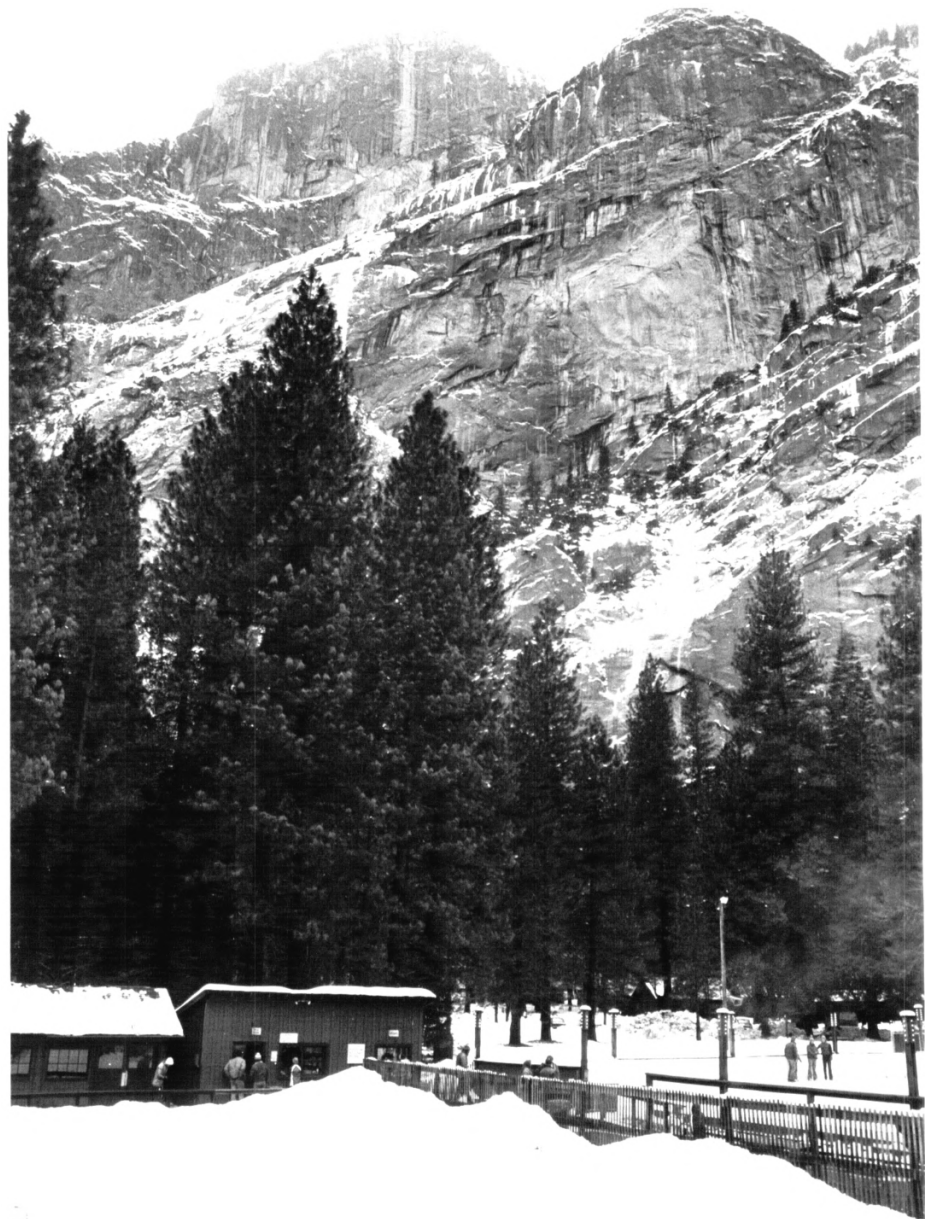
Yosemite Nat'l Park, CA

NPS photo by Dean Shenic

1976

NOV. 1 1979  
DOE





# 25 of 25

CAMP CURRY HISTORIC DISTRICT  
Mariposa County, California  
ICE SKATING RINK AND WARMING  
HOT/SNACK BAR

VIEW TO SOUTH EAST SHOWING  
LOCATION OF CAMP AT BASE  
OF GLACIER PT.

Yosemite Nat'l Park, CA

NPS photo by Donald Fox

1979

11 SEP 1979

NOV 1 1979  
pof