



UNITED STATES DEPARTMENT OF THE INTERIOR
NATIONAL PARK SERVICE

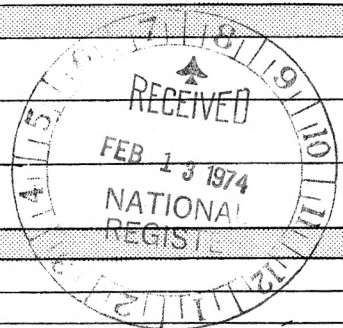
NATIONAL REGISTER OF HISTORIC PLACES
PROPERTY PHOTOGRAPH FORM

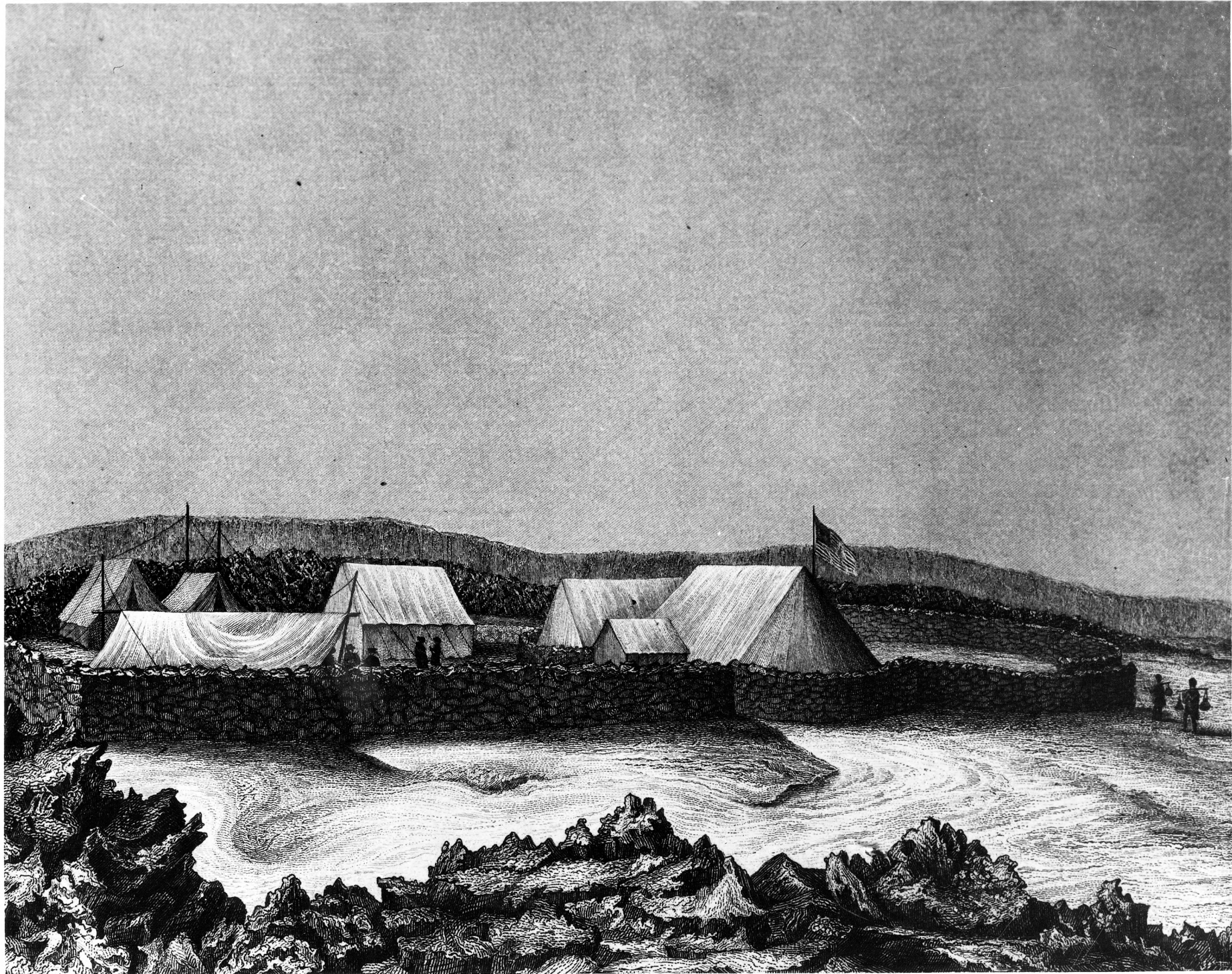
(Type all entries - attach to or enclose with photograph)

STATE	Hawaii
COUNTY	Hawaii
FOR NPS USE ONLY	
ENTRY NUMBER	DATE
	JUL 24 1974

SEE INSTRUCTIONS

1. NAME			
COMMON: Wilkes Campsite			
AND/OR HISTORIC:			
2. LOCATION			
STREET AND NUMBER: Summit of Mauna Loa Volcano			
CITY OR TOWN: Hawaii Volcanoes National Park			
STATE:	CODE	COUNTY:	CODE
Hawaii	15	Hawaii	01
3. PHOTO REFERENCE			
PHOTO CREDIT: National Park Service			
DATE OF PHOTO: 1973			
NEGATIVE FILED AT: Hawaii Volcanoes National Park with Park's copy of nomination.			
4. IDENTIFICATION			
DESCRIBE VIEW, DIRECTION, ETC. Ruins of camp walls--looking west--western side of Mokuaweoweo in background.			

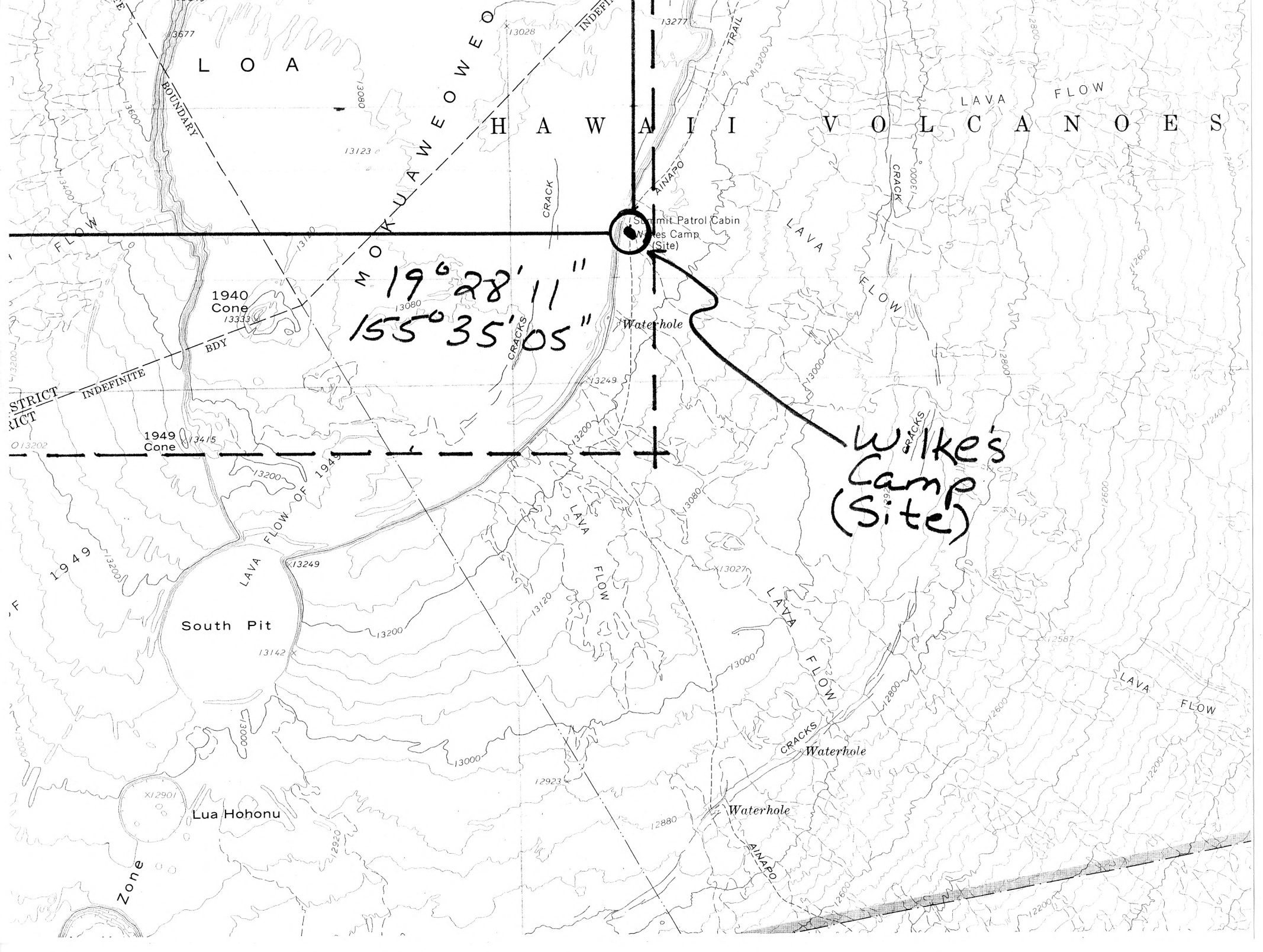




Waikeo Campsite

Hawaii County, Hawaii Volcanoes Nat'l Park, HA

PC - NPS, 1952 Copy of 1843 engraving from 1844 edition of
U.S. Exploring Expedition



LOA HAWAII VOLCANOES

19° 28' 11"
155° 35' 05"

Wilke's
Camp
(Site)

1940
Cone
13333

1949
Cone
13415

South Pit

Lua Hohonu

Summit Patrol Cabin
Wilke's Camp
(Site)

Waterhole

Waterhole

Waterhole

BOUNDARY

MOKUAWEWE

CRACK

INDEFINITE

ANAIPO

TRAIL

LAVA

FLOW

LAVA

FLOW

STRICT

INDEFINITE

RICT

Q 13202

F

Zone

CRACKS

LAVA

FLOW

LAVA

FLOW

ANAIPO

CRACKS

Q 13200