

1207

United States Department of the Interior  
National Park Service



National Register of Historic Places  
Registration Form

This form is for use in nominating or requesting determinations for individual properties and districts. See instructions in How to Complete the National Register of Historic Places Registration Form (National Register Bulletin 16A). Complete each item by marking "x" in the appropriate box or by entering the information requested. If any item does not apply to the property being documented, enter "N/A" for "not applicable." For functions, architectural classification, materials, and areas of significance, enter only categories and subcategories from the instructions. Place additional entries and narrative items on continuation sheets (NPS Form 10-900a). Use a typewriter, word processor, or computer, to complete all items.

1. Name of Property

historic name Monarch Diner  
other names/site number Four Sisters Owl Diner (preferred); Owl Diner; Worcester Lunch Car Company Diner #759 (The Diners of Massachusetts MPS)

2. Location

street & number 246 Appleton Street n/a not for publication  
city or town Lowell n/a vicinity  
state Massachusetts code MA county Middlesex code 017 zip code 01853

3. State/Federal Agency Certification

As the designated authority under the National Historic Preservation Act of 1986, as amended, I hereby certify that this  nomination  request for determination of eligibility meets the documentation standards for registering properties in the National Register of Historic Places and meets the procedural and professional requirements set forth in 36 CFR Part 60. In my opinion, the property  meets  does not meet the National Register Criteria. I recommend that this property be considered significant  nationally  statewide  locally. ( See continuation sheet for additional comments.)

Betsy Friedberg National Register Director 10/8/03  
Signature of certifying official/Title Cara H. Metz, Executive Director Date  
Massachusetts Historical Commission, State Historic Preservation Officer

State or Federal agency and bureau

In my opinion, the property  meets  does not meet the National Register criteria. ( See continuation sheet for additional Comments.)

Signature of certifying official/Title \_\_\_\_\_ Date \_\_\_\_\_

State or Federal agency and bureau

4. National Park Service Certification

I, hereby certify that this property is:

- entered in the National Register  
 See continuation sheet.
- determined eligible for the National Register  
 See continuation sheet.
- determined not eligible for the National Register
- removed from the National Register
- other (explain): \_\_\_\_\_

Signature of the Keeper

Edson H. Beall

Date of Action

11-28-03

Four Sisters Owl Diner  
Name of Property

Middlesex County, Massachusetts  
County and State

**5. Classification**

**Ownership of Property**

(Check as many boxes as apply)

(Check only one box)

- private
- public-local
- public-State
- public-Federal

- building(s)
- district
- site
- structure
- object

**Number of Resources within Property**

(Do not include previously listed resources in the count.)

Contributing	Noncontributing	
1	0	building
0	0	sites
0	0	structures
0	1	objects
1	1	Total

**Name of related multiple property listing**

(Enter "N/A" if property is not part of a multiple property listing.)

Twentieth-Century Commercial Architecture:  
The Diners of Massachusetts

**Number of contributing resources previously listed in the National Register**

N/A

**6. Function or Use**

**Historic Functions**

(Enter categories from instructions)

COMMERCE/TRADE/restaurant  
\_\_\_\_\_  
\_\_\_\_\_  
\_\_\_\_\_  
\_\_\_\_\_  
\_\_\_\_\_  
\_\_\_\_\_

**Current Functions**

(Enter categories from instructions)

COMMERCE/TRADE/restaurant  
\_\_\_\_\_  
\_\_\_\_\_  
\_\_\_\_\_  
\_\_\_\_\_  
\_\_\_\_\_  
\_\_\_\_\_

**7. Description**

**Architectural Classification**

(Enter categories from instructions)

Other: Semi-Streamliner Diner  
\_\_\_\_\_  
\_\_\_\_\_

**Materials**

(Enter categories from instructions)

foundation concrete  
walls porcelain enamel  
wood  
roof metal  
other  
\_\_\_\_\_

**Narrative Description**

(Describe the historic and current condition of the property on one or more continuation sheets.)

Four Sisters Owl Diner

Name of Property

Middlesex County, Massachusetts

County and State

**8. Statement of Significance**

**Applicable National Register Criteria**

(Mark "x" in one or more boxes for the criteria qualifying the property for National Register listing.)

- A** Property is associated with events that have made a significant contribution to the broad patterns of our history.
- B** Property is associated with the lives of persons significant in our past.
- C** Property embodies the distinctive characteristics of a type, period, or method of construction or represents the work of a master, or possesses high artistic values, or represents a significant and distinguishable entity whose components lack individual distinction.
- D** Property has yielded, or is likely to yield, information important in prehistory or history.

**Criteria Considerations**

(Mark "x" in all the boxes that apply.)

Property is:

- A** owned by religious institution or used for religious purposes.
- B** removed from its original location.
- C** a birthplace or grave.
- D** a cemetery.
- E** a reconstructed building, object, or structure.
- F** a commemorative property.
- G** less than 50 years of age or achieved significance within the past 50 years.

**Narrative Statement of Significance**

(Explain the significance of the property on one or more continuation sheets.)

**9. Major Bibliographical References**

(Cite the books, articles, and other sources used in preparing this form on one or more continuation sheets.)

**Previous documentation on file (NPS):**

- preliminary determination of individual listing (36 CFR 67) has been requested
- previously listed in the National Register
- previously determined eligible by the National Register
- designated a National Historic Landmark
- recorded by Historic American Buildings Survey # \_\_\_\_\_
- recorded by Historic American Engineering Record # \_\_\_\_\_

**Areas of Significance**

(Enter categories from instructions)

Architecture

Commerce

**Period of Significance**

1940-1951

**Significant Dates**

N/A

**Significant Person**

(Complete if Criterion B is marked above)

N/A

**Cultural Affiliation**

N/A

**Architect/Builder**

Worcester Lunch Car Company

**Primary location of additional data:**

- State Historic Preservation Office
- Other State agency
- Federal agency
- Local government
- University
- Other

Name of repository:

United States Department of the Interior  
National Park Service

National Register of Historic Places  
Continuation Sheet

The Diners of Massachusetts MPS  
Four Sisters Owl Diner  
Lowell (Middlesex Co.), MA

Section number 7 Page 1

---

## 7. Description

Four Sisters Owl Diner, 246 Appleton Street, Lowell (1940, MHC #1014), originally the Monarch Diner of Waltham, Massachusetts, was manufactured as diner #759 by the Worcester Lunch Car Company. In 1951, the diner was moved to Lowell and subsequently expanded (see below). It is located on a heavily traveled route through a commercial and residential area in downtown Lowell. The diner occupies a level corner lot and is set back from the street with parking immediately in front (west side).

This wood-frame diner displays the monitor roof and canted side walls that characterize the semi-streamliner form. The prefabricated section is nine bays across and approximately four bays deep. The foundation is concrete, the monitor roof is metal, and the porcelain enamel wall panels are black with yellow and green detailing. A projecting center vestibule on the façade probably was constructed when the diner was moved to Lowell in 1951. Such an entry is a typical feature of diners that were constructed about the time the Owl Diner was moved. The entry in the northern (left) end is no longer used, but wood doorway trim is still visible on the interior. Windows have single-hung steel sash in wood surrounds.

The factory-built diner has two additions. The one-story rear block, common to diners of this era, likely was constructed about 1951 when the diner was moved to Lowell. This block, which houses kitchen operations and restrooms, is of concrete construction and has a shed roof. At the southern end of the factory-built diner is a one-story addition that houses a separate dining room with table seating. This addition, which is two bays across, has a flat roof, stone facing on the façade, and a concrete wall with no fenestration on the side elevation (fronting Favor Street). This addition was constructed after the end of the period of significance; Sanborn fire insurance maps indicate a construction date between 1952 and 1966. Neither the rear nor side addition compromises the integrity of the factory-built diner.

The addition of the entry vestibule on the façade of the prefabricated diner partially obscures the signage lettered on the façade's porcelain enamel panels, which reads *OWL DINER*. At the street is a standing sign (ca. 1960) (non-contributing) that features both a rendering of an owl and the words *OWL DINER* executed in neon.

The building has the most intact original features of any semi-streamliner remaining in Massachusetts. [Gutman interview] Inside, the floor plan of the prefabricated diner is well preserved. The counter extends almost the full length of the diner, with a staff entrance at the southern end, near both the side addition and the hallway to the kitchen and restrooms. There are sixteen counter stools. Six booths, three on either side of the projecting entry vestibule, line the west (front) wall. The grill still is maintained in the back bar area, though cooking is also done in the rear kitchen addition. The diner's wood monitor ceiling is well preserved. Though the clerestory windows are no longer used for ventilation, they are still visible on the interior. Ceiling fans have been installed.

Interior finishes are largely tile, wood, and porcelain enamel. The Four Sisters Owl Diner has an interior color scheme of black, tan, orange, and brown that is comparable to at least one other Worcester-built diner of the same era, the Miss Florence Diner in the Northampton village of Florence (99 Main Street, 1941, NR 1999). At the diner, the marble counter retains an apron of orange and black tiles with steel trim. The footrest has replacement black vinyl tile. Steel counter stools are painted black and have vinyl seats; the booths are entirely upholstered in vinyl. The diner has wood cladding on the end walls and orange and black tile with steel accents on the front wall beneath the windows. The patterned tile floor of smaller tiles has a narrow diamond border. Behind the counter, the back bar displays both wood and steel finishes (the steel has a sunburst motif), and there are orange enameled ice boxes.

(continued)

**United States Department of the Interior  
National Park Service**

**National Register of Historic Places  
Continuation Sheet**

**The Diners of Massachusetts MPS  
Four Sisters Owl Diner  
Lowell (Middlesex Co.), MA**

**Section number** 7/8 **Page** 2/1

---

**Archaeological Description**

The boundaries of one recorded ancient Native American site include the Four Sisters Owl Diner property, and locational criteria also support the presence of ancient sites in this area. Site 19-MD-53 is recorded as a village site located in the South Common locale. No additional data is known for that site. In the absence of site examination-level testing, boundaries of 19-MD-53 are symbolic, with a square referring to the general location of the original finds or location. The site periphery may extend to the Four Sisters Owl Diner property or may be concentrated in the South Common area. The effects of urban development in the downtown commercial and residential area of Lowell have destroyed or obscured the natural environmental characteristics of the diner property. Original soils in the level to moderately sloping corner lot were likely well drained and may have been located within 1000 feet of wetlands that were modified to form the Pawtucket Canal and its extensions. In spite of the above information, however, the potential for locating significant ancient Native American resources on the Four Sisters Owl Diner Property is low. The actual locus for site 19-MD-53 was recorded south of the diner in the South Common area, and the effects of diner construction, its additions, installation of utilities, and parking would have destroyed any ancient resources at this location.

The potential for locating significant historic archaeological resources on the Owl Diner property is also low. While no specific historic buildings that predate the diner have been identified at this location, earlier evidence of historic land use in this area of downtown Lowell is not unexpected, especially from the mid 19<sup>th</sup> century and later. Given the lack of known sites, however, and the effects of construction of the diner, later additions, utilities and parking areas, all on the relatively small lot (less than one acre), a low potential exists for locating historic archaeological resources on the diner property.

(end)

**8. Statement of Significance**

Four Sisters Owl Diner, Lowell (1940, MHC #1014) is unique in Lowell and uncommon in Massachusetts as one of very few surviving examples of the semi-streamliner form. The manufacturer, Worcester Lunch Car Company, was a major force in the design and construction of Massachusetts diners before World War II, and introduced the semi-streamliner model as an alternative to the streamliner diners that debuted in the late 1930s. The Owl Diner combines traditional and modern features of diner design about 1940, particularly with its well preserved interior, which is considered the best preserved of any semi-streamliner remaining in Massachusetts. The diner also is significant for its historic associations with diner operations in the cities of Waltham, its original location, and Lowell, where it was moved in 1951. The diner's relocation to Lowell is typical of the portable nature of diners and has not adversely affected the diner's historic and architectural integrity. The Owl Diner maintains a roadside orientation and setting in its current location. Retaining integrity of design, setting, materials, workmanship, feeling, and association, the Four Sisters Owl Diner meets Criteria A and C and Criteria Consideration B for a moved property of the National Register at the state and local levels.

Originally, Owl Diner was known as the Monarch Diner and located at 789 Main Street (US Route 20) in downtown Waltham. John DeCola, a Lowell resident, managed the Monarch Diner in 1945, according to the Waltham directory of that year. Countermeat at the diner the same year were Louis DeCola, whose place of residence is not known, and Murray

(continued)

United States Department of the Interior  
National Park Service

National Register of Historic Places  
Continuation Sheet

The Diners of Massachusetts MPS  
Four Sisters Owl Diner  
Lowell (Middlesex Co.), MA

Section number 8 Page 2

---

DeCola, a Cambridge resident. At its location in Waltham, the diner was reportedly part of a chain of Monarch diners operating in the Boston area. [Four Sisters Owl Diner menu] In 1951, a new diner (now demolished) replaced this diner on the Waltham site, and this diner was moved to Appleton Street in Lowell, where it was renamed the Owl Diner.

Members of the DeCola family, who owned diners north and west of Boston, likely were responsible for bringing this diner to Lowell. Records of the Worcester Lunch Car Company from the mid-1930s to ca. 1946 show that at least four diners were built for "Decola," either as sole or part owner, during this period alone: the Paradise Diner (Worcester #727), a second Paradise Diner in Lowell (Worcester #749), the Monarch Diner in Waltham (later the Owl Diner in Lowell, Worcester #759), and Decola's Diner in Billerica (Worcester #794). That this diner served only six years in Waltham before being replaced with another, presumably newer, diner demonstrates the desire on the part of diner operators to keep their facilities up-to-date.

By 1954, the Owl Diner was one of about sixteen diners operating in Lowell. At that time, the proprietor was Claude J. Harvey, who resided in Chelmsford, according to the Lowell directory. By 1964, the Owl Diner was operated by Arthur N. Papoulias of Lowell and Nicholas C. Zoukis of Chelmsford. They continued to operate the diner until the early 1980s. Zoukis is listed as the sole proprietor in the city's 1982 directory. That same year, the current owners purchased the diner, after operating the former Peerless Diner in Lowell for six years. The Monarch/Owl Diner was then renamed Four Sisters Owl Diner. The diner is the latest of four Worcester-built diners in Lowell.

Semi-streamliners are comparatively rare in Massachusetts today. Three such diners, all of them built by Worcester Lunch Car Company, have been moved out of the state since 1984. Among them was the former Peerless Diner in Lowell, which was moved in 1987 to Florida. Worcester Lunch Car Company introduced the "semi-streamliner" model of diner about 1940, as a more conservative alternative to the streamliner. The semi-streamliner had the standard barrel or monitor roof and featured canted end walls rather than the curving walls of the streamliner. These semi-streamliners reportedly were more popular among prospective diner purchasers than the more distinctive streamliners. [Gutman, p. 115]

In 1977, the neon standing sign at the Owl Diner was the subject of a watercolor painting by artist John Baeder (b. 1938 in South Bend, Indiana). Baeder was raised in Atlanta and studied art at Auburn University in Auburn, Alabama. During his early career as art director of a New York-based advertising agency, Baeder began collecting vintage postcards, eventually focusing his collection on roadside views of small-town America, including gas stations, motels, restaurants, and diners. Baeder's early paintings were based on these postcard images. In 1972, after quitting his job in advertising, Baeder had his first art show at the O. K. Harris Gallery in Soho (New York City). By the time of his second show in 1974, Baeder was painting diners almost exclusively, partly due to a shift in his collecting activities from postcards to the color and black-and-white photographs he took of diners. He was labeled a photorealist painter, though he considers himself a representational landscape painter, representing an image of the landscape that impresses him. [*Diners*, 103] In addition to Owl Diner, Baeder's works include several other diners in Massachusetts, among them *Ted's Diner* (1974, watercolor) in Milford; *Casey's* (1974, watercolor) in Natick; the former *Alice in the Hat* (1974, watercolor) in Worcester; *Stella's* (now Main Street Diner, 1975, watercolor) in Woburn; *Sisson's* (1975, watercolor) in Middleborough; *Viv's* (later Judy's Diner, pencil, 1976) in Malden, and *Day and Night* (1977, watercolor) in Palmer. The large number of his diner paintings led to the publication of his book, *Diners* (1978, revised and updated 1995). Other books by Baeder include *Gas, Food, and Lodging: A Postcard Odyssey through the Great American Roadside* (1982) and *Sign Language: Street Signs as Folk Art* (1996). He resides in Nashville, Tennessee.

(end)

Four Sisters Owl Diner  
Name of Property

Middlesex County, Massachusetts  
County and State

## 10. Geographical Data

Acreage of Property less than one acre

### UTM References

(Place additional UTM references on a continuation sheet)

1. 19	310300	4723130	3.		
Zone	Easting	Northing	Zone	Easting	Northing
2.			4.		
Zone	Easting	Northing	Zone	Easting	Northing
			— See continuation sheet		

### Verbal Boundary Description

(Describe the boundaries of the property on a continuation sheet.)

### Boundary Justification

(Explain why the boundaries were selected on a continuation sheet.)

## 11. Form Prepared By

name/title Kathleen Kelly Broomer, consultant, with Betsy Friedberg, NR Director, MHC

organization Massachusetts Historical Commission date October, 2003

street & number 220 Morrissey Boulevard telephone (617) 727-8470

city or town Boston state MA zip code 02125

### Additional Documentation

Submit the following items with the completed form:

#### Continuation Sheets

#### Maps

A **USGS map** (7.5 or 15 minute series) indicating the property's location.

A **sketch map** for historic districts and properties having large acreage or numerous resources.

#### Photographs

Representative **black and white photographs** of the property.

**Additional items** (Check with the SHPO or FPO for any additional items)

### Property Owner

(Complete this item at the request of the SHPO or FPO.)

name The Shanahan Family

street & number 244 Appleton Street telephone 978-453-8321

city or town Lowell state MA zip code 01852

**Paperwork Reduction Act Statement:** This information is being collected for applications to the National Register of Historic Places to nominate properties for listing or determine eligibility for listing, to list properties, and to amend existing listings. Response to this request is required to obtain a benefit in accordance with the National Historic Preservation Act, as amended (16 U.S.C. 470 et seq.).

**Estimated Burden Statement:** Public reporting burden for this form is estimated to average 18.1 hours per response including the time for reviewing instructions, gathering and maintaining data, and completing and reviewing the form. Direct comments regarding this burden estimate or any aspect of this form to the Chief, Administrative Services Division, National Park Service, P.O. Box 37127, Washington, DC 20013-7127; and the Office of Management and Budget, Paperwork Reductions Project (1024-0018), Washington, DC 20503. NPS Form 10-900 OMB No. 1024-0018

United States Department of the Interior  
National Park Service

National Register of Historic Places  
Continuation Sheet

The Diners of Massachusetts MPS  
Four Sisters Owl Diner  
Lowell (Middlesex Co.), MA

Section number 9/10 Page 1

---

**9. Major Bibliographical References**

- Baeder, John. *Diners*. New York: Harry N. Abrams, Inc., 1978.  
*Diner Finder Deluxe: Massachusetts*. Watertown, MA: Coffee Cup Publications, 1991.  
Gutman, Richard J. S. *American Diner Then and Now*. New York: Harper Collins Publishers, 1993.  
Interview with diner historian Richard Gutman, November 23, 1998 (see also below).  
MHC Inventory Form for Owl Diner, 246 Appleton Street, MHC #1014 (prepared by Elizabeth Durfee Hengen), 1981.  
Menu for Four Sisters Owl Diner, Lowell (includes history).  
*Polk's Lowell (Massachusetts) City Directory*: 1940 through 1982.  
*Polk's Waltham (Massachusetts) City Directory*: 1945, 1955.  
Pryor, William Harlan. "Postcards from the road." *Classic Automobile*, Fall 1997 (via [www.classicautomobile.com](http://www.classicautomobile.com)).  
Sanborn Fire Insurance Co., maps for Lowell, vol. II, 1952 (updated to 1966).  
Worcester Lunch Car Company Records, Record Group 1998.163, Box 2, Index cards of diners #701-799. Worcester Historical Museum

(end)

**10. Geographical Data**

**Verbal Boundary Description**

The boundary of the nominated property is shown on the accompanying detail of the City of Lowell assessors' map #261, lot #244..

**Boundary Justification**

The boundary includes the entire parcel that has been associated with the diner since its placement on the site in 1951.

(end)

UNITED STATES DEPARTMENT OF THE INTERIOR  
NATIONAL PARK SERVICE

NATIONAL REGISTER OF HISTORIC PLACES  
EVALUATION/RETURN SHEET

REQUESTED ACTION: NOMINATION

PROPERTY Monarch Diner  
NAME:

MULTIPLE Diners of Massachusetts MPS  
NAME:

STATE & COUNTY: MASSACHUSETTS, Middlesex

DATE RECEIVED: 10/14/03 DATE OF PENDING LIST: 11/05/03  
DATE OF 16TH DAY: 11/21/03 DATE OF 45TH DAY: 11/28/03  
DATE OF WEEKLY LIST:

REFERENCE NUMBER: 03001207

REASONS FOR REVIEW:

APPEAL: N DATA PROBLEM: N LANDSCAPE: N LESS THAN 50 YEARS: N  
OTHER: N PDIL: N PERIOD: N PROGRAM UNAPPROVED: N  
REQUEST: N SAMPLE: N SLR DRAFT: N NATIONAL: N

COMMENT WAIVER: N

ACCEPT  RETURN  REJECT 11/28/03 DATE

ABSTRACT/SUMMARY COMMENTS:

*Entered in the  
National Register*

RECOM./CRITERIA \_\_\_\_\_

REVIEWER \_\_\_\_\_ DISCIPLINE \_\_\_\_\_

TELEPHONE \_\_\_\_\_ DATE \_\_\_\_\_

DOCUMENTATION see attached comments Y/N see attached SLR Y/N



OWL DINER  
CONGRATULATIONS  
JEFF AND  
KELLY

OWL  
DINER  
*Floor's Shop*

OPEN

Diners of Mass. MPS

Four Sisters Owl Diner

246 Appleton Street

Lowell, Middlesex County, Mass.

KK Brommer

Neg: MHC

September 2001

Photo 1 of 2



Diners of Mass. MPS

Four Sisters Owl Diner

246 Appleton Street

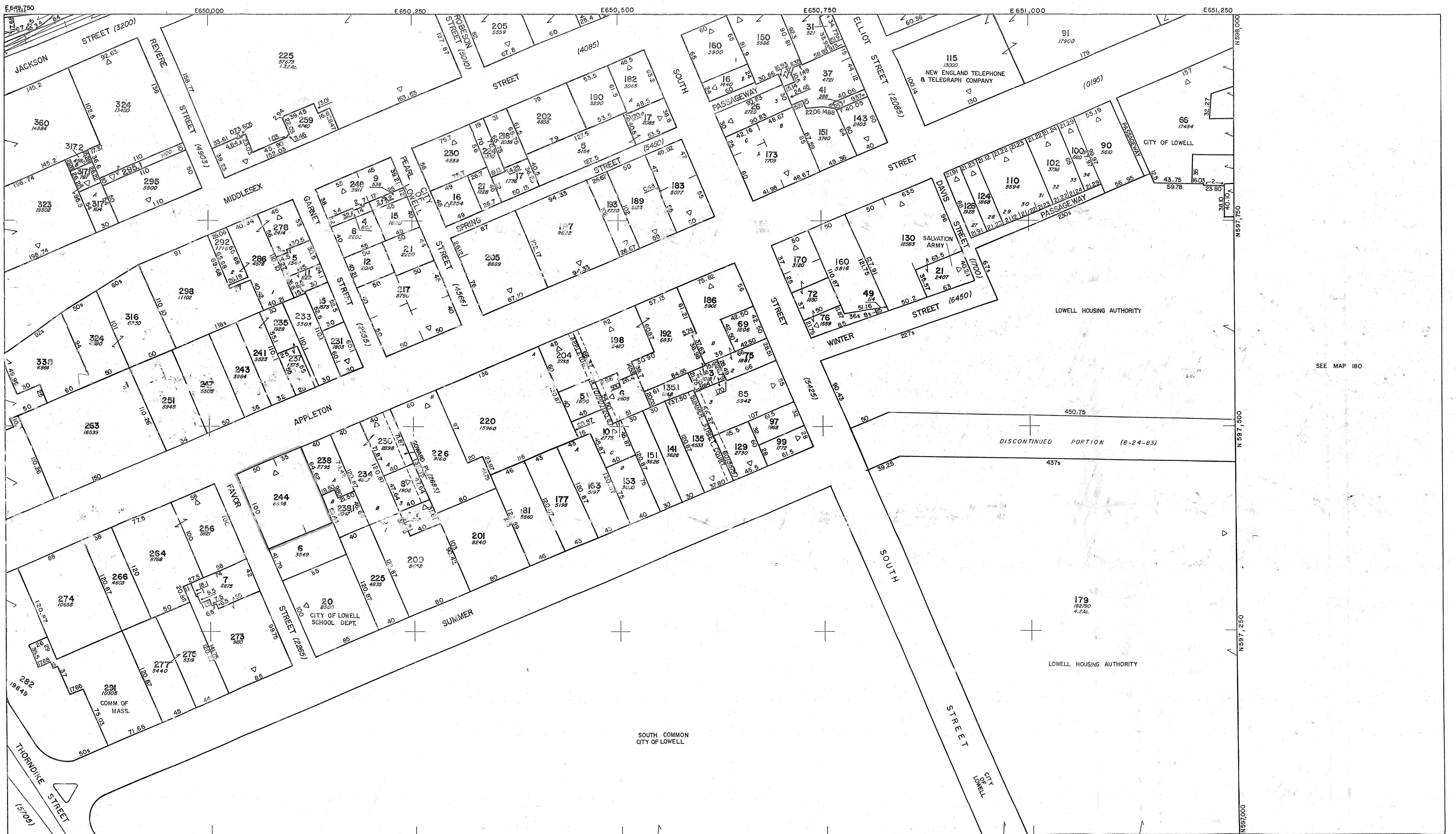
Lowell, Middlesex County, Mass.

KKBroomer

Neg: MHC

September 2001

Photo 2 of 2



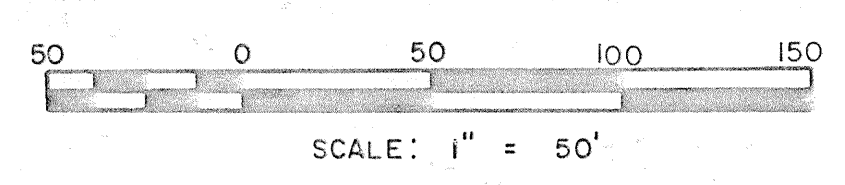
SEE MAP 180

The Diners of Massachusetts MPS  
 Four Sisters Diner  
 246 Appleton Street, Lowell  
 Middlesex County, Mass.  
 September 2001

PREPARED BY  
**HUNNICUTT & ASSOCIATES, INC.**  
 A DIVISION OF L. ROBERT KIMBALL & ASSOC.  
 ENGINEERS • APPRAISERS • CARTOGRAPHERS  
 ST. PETERSBURG, FLORIDA

TOPOGRAPHIC PLANS DATED 4-20-80  
 USED AS BASE FOR OWNERSHIP MAPPING

REVISIONS		PROPERTY OWNERSHIP MAPS			SHEET INDEX		
DATE	REV. BY	CITY OF LOWELL, MASSACHUSETTS			139	161	179
		DATE: JAN. 1, 1982			140	162	180
					141	162	181





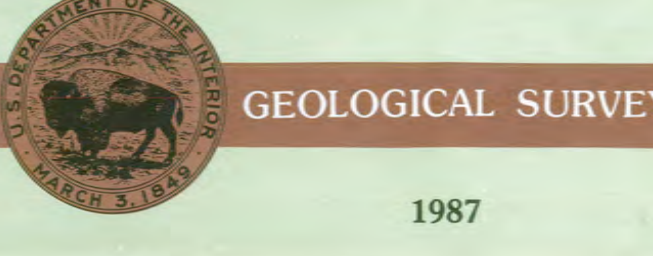
# Lowell

MASSACHUSETTS-NEW HAMPSHIRE  
1:25 000-scale metric  
topographic map



### 7.5 X 15 MINUTE QUADRANGLE SHOWING

- Contours and elevations in meters
- Highways, roads and other manmade structures
- Water features
- Woodland areas
- Geographic names



Produced by the United States Geological Survey in cooperation with Massachusetts Department of Public Works. Control by USGS, NOS/NOAA, and Commonwealth of Massachusetts agencies.

Compiled by photogrammetric methods from aerial photographs taken 1981. Field checked 1983. Map edited 1987. This area also covered by 7.5-minute 1:24,000-scale maps: Nashua South 1965 and Lowell 1966.

Projection and 1000-meter grid, zone 19 Universal Transverse Mercator. 10,000-foot grid ticks based on Massachusetts coordinate system, mainland zone, and New Hampshire coordinate system 1927 North American Datum. To place on the predicted North American Datum 1983, move the projection lines 5 meters south and 40 meters west as shown by dashed corner ticks.

There may be private inholdings within the boundaries of the National or State reservations shown on this map.

CONTOUR INTERVAL 3 METERS  
NATIONAL GEODETIC VERTICAL DATUM OF 1929  
CONTROL ELEVATIONS SHOWN TO THE NEAREST 0.1 METER  
OTHER ELEVATIONS SHOWN TO THE NEAREST 0.5 METER

THIS MAP COMPLIES WITH NATIONAL MAP ACCURACY STANDARDS

CONVERSION TABLE		DECLINATION DIAGRAM		ADJOINING MAPS		
Meters	Feet	MAGNETIC		1	2	3
1	3.2808	10°		1	2	3
2	6.5617	20°		4	5	
3	9.8425	30°		6	7	8
4	13.1234	40°				
5	16.4042	50°				
6	19.6850	60°				
7	22.9659	70°				
8	26.2467	80°				
9	29.5275	90°				
10	32.8084					

To convert meters to feet multiply by 3.2808  
To convert feet to meters multiply by 0.3048

UTM grid convergence (GN) and 1983 magnetic declination at center of map diagram is approximate

FOR SALE BY U.S. GEOLOGICAL SURVEY DENVER, COLORADO 80225, OR RESTON, VIRGINIA 22092

### Topographic Map Symbols

- Primary highway, hard surface
- Secondary highway, hard surface
- Light-duty road, hard or improved surface
- Unimproved road, trail
- Roads marker: Interstate, U.S. State
- Railroad: standard gage; narrow gage
- Bridge: drawbridge
- Foatbridge; overpass; underpass
- Build-up area: only selected landmark buildings shown
- Houses; barn; church; school; large structure
- Boundary: National, with monument; State; County, parish; Civil township, precinct, district; Incorporated city, village, town; National or State reservation; small section corner; Land grant with monument; found section corner; U.S. public lands survey; range, township; section; Range, township; section line: location approximate; Fictitious or field line; Power transmission line, located tower; Dam; dam with lock; Cemetery; grave; Campground; picnic area; U.S. location monument; Wellhead; water well; spring; Mine shaft; prospect; adit or cave; Control: horizontal station; vertical station; spot elevation; Contour: index; intermediate; supplementary; depression; Distorted surface: strip mine; levee; sand; Bathymetric contours: index; intermediate; Perennial lake and stream; intermittent lake and stream; Rapid, large and small; falls, large and small; Swamp; marsh; Submerged marsh; land subject to controlled inundation; Woodland: scattered trees; Scrub; mangrove; Orchard; vineyard

A pamphlet describing topographic maps is available on request



**The Commonwealth of Massachusetts**  
William Francis Galvin, Secretary of the Commonwealth  
Massachusetts Historical Commission

October 8, 2003

Ms. Carol Shull  
National Register of Historic Places  
Department of the Interior  
National Park Service  
1201 Eye Street, NW  
Washington, DC 20005

Dear Ms. Shull:

Enclosed please find the following nomination form:

Four Sisters Diner, 246 Appleton Street, Lowell (Middlesex), MA  
(The Diners of Massachusetts MPS)

The nomination has been voted eligible by the State Review Board and has been signed by the State Historic Preservation Officer. The owner of the property in the Certified Local Government community of Lowell were notified of pending State Review Board consideration 60 to 90 days before the meeting and were afforded the opportunity to comment.

Sincerely,

A handwritten signature in cursive script that reads "Betsy Friedberg".

Betsy Friedberg  
National Register Director  
Massachusetts Historical Commission

enclosure

cc: Debra Grossman, Chair, Lowell Historic Commission  
Kathleen Broomer, Preservation Consultant  
The Shanahan Family  
Hon. Rita Mercier, Mayor, City of Lowell  
Matt Coggins, Lowell Planning and Economic Development  
Steve Stowell, Lowell CLG Coordinator