



1. Polvorin de Miraflores
 2. Santurce, Puerto Rico
 3. Castillo
 4. January 24, 1980
 5. Fotografía Castillo - 140 O'Neill St., Hato Rey, P.R.
 6. Eastern facade
 7. photography #1
-



- APILLA DE MIRAFLORES
1. Polvorin de Miraflores
 2. Santurce, Puerto Rico
 3. Castillo
 4. January 24, 1980
 5. Fotografía Castillo - 140 O'Neill St.-Hato Rey, P.R.
 6. Western facade
 7. #2
-



1. Polvorin de Miraflores
2. Santurce, Puerto Rico
3. Castillo
4. January 24, 1980
5. Fotografía Castillo - 140 O'Neill St., Hato Rey, P.R.
6. Main Chapel facing the apse
7. #3



1. Polvorin de Miraflores
 2. Santurce, Puerto Rico
 3. Castillo
 4. January 24, 1980
 5. Fotografía Castillo-140 O'Neill St.-Hato Rey, P.R.
 6. Southern facade
 7. #4
-



←SRMF→

1. Polvorin de Miraflores
 2. Santurce, Puerto Rico
 3. Castillo
 4. January 24, 1980
 5. Fotografía Castillo-140 O'Neill St.-Hato Rey, P.R.
 6. Hallway with Buttresses
 7. #5
-

CAPILLA DE MIRAFLORES
HALLWAY WITH BUTTRESSES

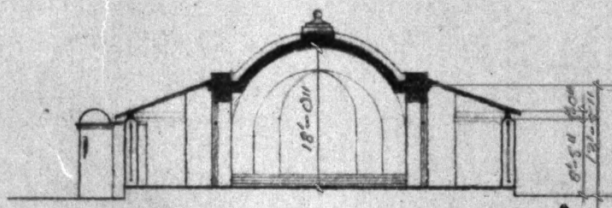
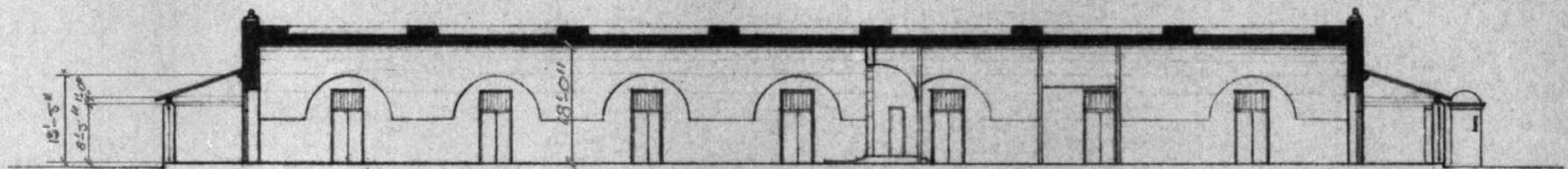
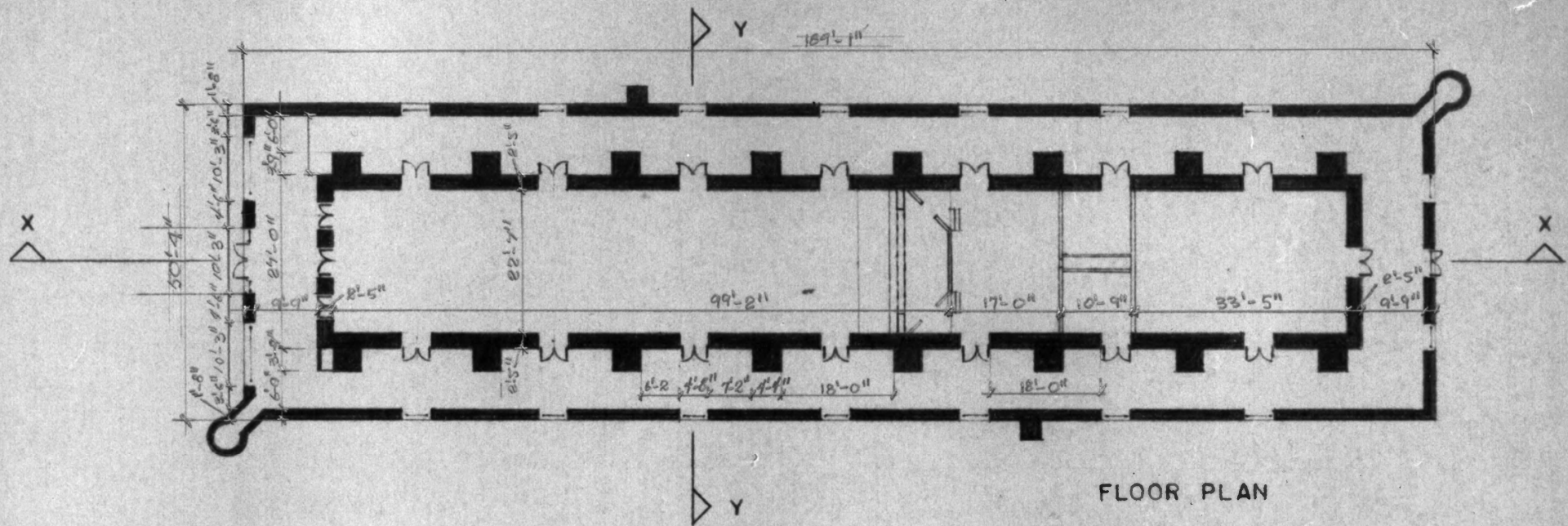


1. Polvorin de Miraflores
 2. Santurce, P. R.
 3. Castillo
 4. January 24, 1980
 5. Fotografía Castillo-140 O'Neill St.-Hato Rey, P.R.
 6. Principal Entrance Doors
 7. #6
-



1. Polvorin de Miraflores
 2. Santurce, P.R.
 3. Castillo
 4. January 24, 1980
 5. Fotografía Castillo-140 O'Neill St.-Hato Rey, P.R.
 6. Apse of the main chapel
 7. #7
-

POLVORIN DE MIRAFLORES (1776)
 CAPILLA DE MIRAFLORES (1940)



● AREA = 9,669 sq. ft.

SCALE: 1" = 300"

