



Beersheba Springs Historic District
Armfield Avenue, Beersheba Springs, Grundy Cty
Tennessee

Photo: Robert E. Dalton

Date: June 1979

DOE
MAR 20 1980

Neg: Tennessee Historical Commission
Nashville, Tennessee

Looking southwest at north (facade) and
east elevations-Beersheba Hotel (1)

1 of 60

JAN 9 1980



Beersheba Springs Historic District
Armfield Avenue, Beersheba Springs, Grundy
County, Tennessee

Photo: Robert E. Dalton ^{DOE} MAR 20 1980

Date: June 1979

Neg: Tennessee Historical Commission
Nashville, Tennessee

Beersheba Hotel (1)-Looking south at north
elevation (facade)

2 of 60

JAN 9 1980



Beersheba Springs Historic District
Armfield Avenue, Beersheba Springs, Grundy
County, Tennessee

Photo: Robert E. Dalton

Date: June 1979

Neg: Tennessee Historical Commission
Nashville, Tennessee

Beersheba Hotel (1)-looking west at east
elevation - Cozy Corner Row

3 of 60

DOE
MAR 20 1980
JAN 9 1980



Beersheba Springs Historic District
Armfield Avenue, Beersheba Springs, Grundy
County, Tennessee

Photo: Robert E. Dalton

Date: June 1979

Neg: Tennessee Historical Commission

Nashville, Tennessee

Family Row (1)-looking southeast at west
elevation

4 of 60

DOE
MAR 20 1980
JAN 9 1980



Beersheba Springs Historic District
Armfield Avenue, Beersheba Springs, Grundy
County, Tennessee

Photo: Robert E. Dalton

DOE

Date: June 1979

MAR 20 1980

Neg: Tennessee Historical Commission
Nashville, Tennessee

Family Row (1)-looking northeast at west ele-
vation, dinner bell

JAN 9 1980

5 of 60



Beersheba Springs Historic District
Armfield Avenue, Beersheba Springs, Grundy
County, Tennessee

Photo: Robert E. Dalton

Date: June 1979

Neg: Tennessee Historical Commission
Nashville, Tennessee

Cross Row (1)-looking south at north
elevation.

6 of 60

D E
MAR 20 1980

JAN 9 1980



Beersheba Springs Historic District
Armfield Avenue, Beersheba Springs, Grundy
County, Tennessee

Photo: Robert E. Dalton

DOE
MAR 20 1980

Date: June 1979

Neg: Tennessee Historical Commission
Nashville, Tennessee

Brick Row (1)-looking southwest at north
and east elevations.

JAN 9 1980

7 of 60



Beersheba Springs Historic District
Armfield Avenue, Beersheba Springs, Grundy
County, Tennessee

Photo: Robert E. Dalton

Date: June 1979

DOE
MAR 20 1980

Neg: Tennessee Historical Commission
Nashville, Tennessee

Whiskey Row (1)-looking southwest a north
and east elevations.

8 of 60

JAN 9 1980



Beersheba Springs Historic District
Armfield Avenue, Beersheba Springs, Grundy
County, Tennessee

Photo: Robert E. Dalton

DOE

Date: June 1979

MAR 20 1980

Neg: Tennessee Historical Commission
Nashville, Tennessee

Post Office Row-looking southeast at north and
west elevations

9 of 60

JAN 9 1980



Beersheba Springs Historic District
Armfield Avenue, Beersheba Springs, Grundy
County, Tennessee

Photo: Robert E. Dalton

Date: June 1979

Neg: Tennessee Historical Commission
Nashville, Tennessee

Vesper Point (1)-looking northeast

10 of 60

DOE
MAR 20 1980

JAN 9 1980



Beersheba Springs Historic District
Armfield Avenue, Beersheba Springs, Grundy
County, Tennessee

Photo: Robert E. Dalton

Date: June 1979

Neg: Tennessee Historical Commission
Nashville, Tennessee

Old Northcutt Store (2)-looking northeast
at south (facade) and west elevations.

11 of 60

DOE
MAR 20 1980

JAN 9 1980



3 Beersheba Springs Historic District
Armfield Avenue, Beersheba Springs, Grundy
County, Tennessee

Photo: Robert E. Dalton

Date: June 1979

Neg: Tennessee Historical Commission
Nashville, Tennessee

Harding Cottage (3)-looking south at north
elevation (facade)

12 of 60

^{D & E}
MAR 20 1980

JAN 9 1980



Beersheba Springs Historic District
Armfield Avenue, Beersheba Springs, Grundy
County, Tennessee

Photo: Robert E. Dalton

Date: June 1979

Neg: Tennessee Historical Commission
Nashville, Tennessee

Armfield Cottage (4)-looking northeast at
south (facade) and west elevations

13 of 60

DOE
MAR 20 1980

JAN 9 1980



Beersheba Springs Historic District
Armfield Avenue, Beersheba Springs, Grundy
County, Tennessee

Photo: Robert E. Dalton

Date: June 1979

Neg: Tennessee Historical Commission
Nashville, Tennessee

John M. Bass Cottage (5)-looking southwest at
north (facade) and east elevations

14 of 60

DOE
MAR 20 1980

JAN 9 1980



Beersheba Springs Historic District
Armfield Avenue, Beersheba Springs, Grundy
County, Tennessee

Photo: Robert E. Dalton

Date: June 1979

Neg: Tennessee Historical Commission
Nashville, Tennessee

Armfield Cemetery (6)-looking southeast

15 of 60

DOE
MAR 20 1980

JAN 9 1980



Beersheba Springs Historic District
Armfield Avenue, Beersheba Springs, Grundy
County, Tennessee

Photo: Robert E. Dalton

Date: June 1979

Neg: Tennessee Historical Commission
Nashville, Tennessee

Indian Rock Cottage (7)-looking northwest
at south and east (facade) elevations.

16 of 60

DOE
MAR 20 1980

JAN 9 1980



Beersheba Springs Historic District
Armfield Avenue, Beersheba Springs, Grundy
County, Tennessee

Photo: Robert E. Dalton

Date: June 1979

Neg: Tennessee Historical Commission
Nashville, Tennessee

Leonard Tate Cottage (8)-looking north at
south elevation (facade)

17 of 60

DDE
MAR 20 1980

JAN 9 1980



Beersheba Springs Historic District
Dahlgren Avenue, Beersheba Springs, Grundy
County, Tennessee

Photo: Robert E. Dalton

Date: June 1979

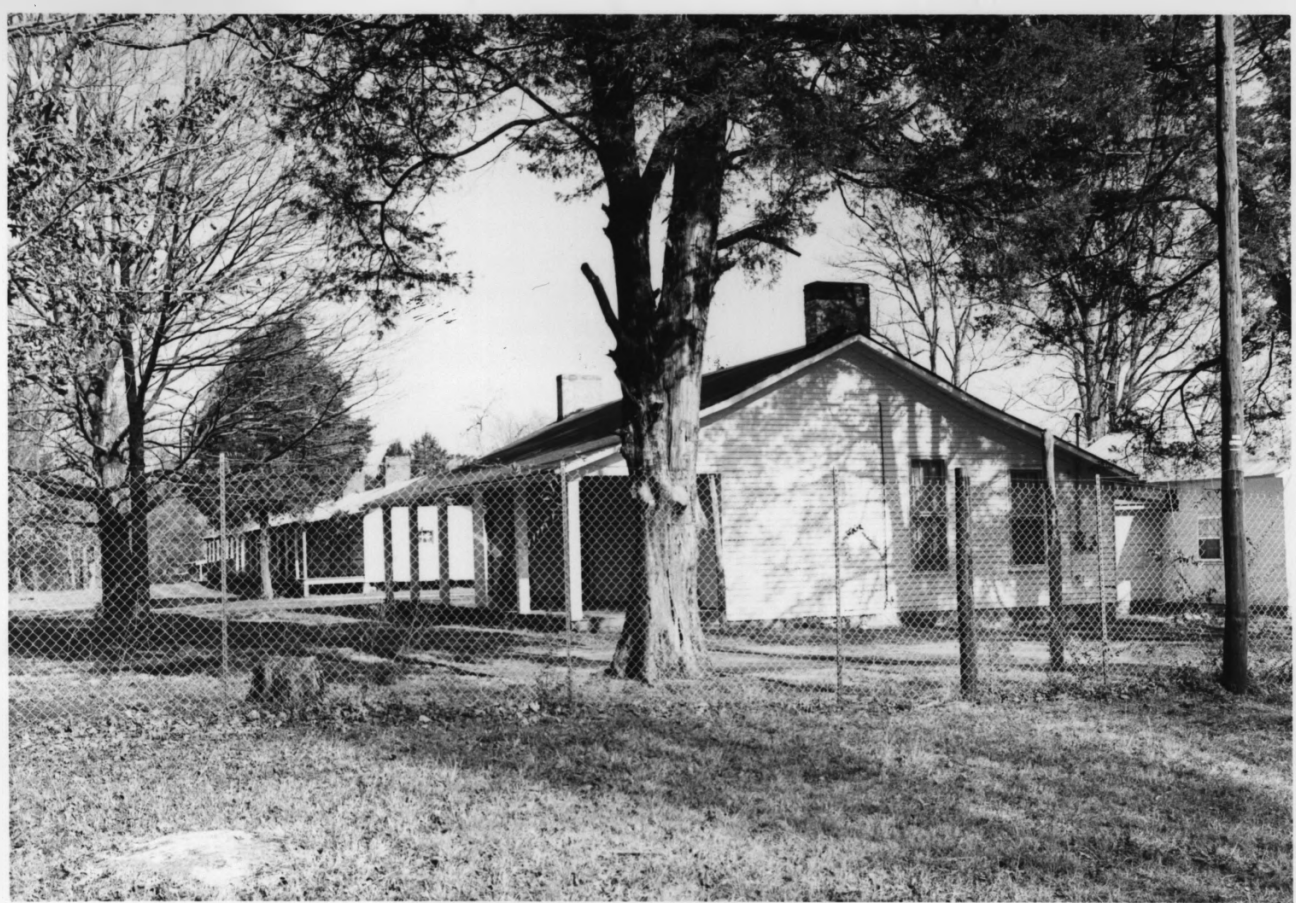
Neg: Tennessee Historical Commission
Nashville, Tennessee

Dr. John Waters Cottage (9)-looking west at
east elevation (facade)

18 of 60

D&E
MAR 20 1980

JAN 9 1980



Beersheba Springs Historic District
Dahlgren Avenue, Beersheba Springs, Grundy
County, Tennessee

Photo: Robert E. Dalton

Date: June 1979

Neg: Tennessee Historical Commission
Nashville, Tennessee

Alex Nelson Cottage (10)-looking northeast
at west (facade) and south elevations

19 of 60

DOE
MAR 20 1980

JAN 9 1980



Beersheba Springs Historic District
Dahlgren Avenue, Beersheba Springs, Grundy
County, Tennessee

Photo: Robert E. Dalton

Date: June 1979

Neg: Tennessee Historical Commission
Nashville, Tennessee

Nanhaven (11)-looking west at east elevation
20 of 60

D&E
MAR 20 1980

JAN 9 1980



Beersheba Springs Historic District
Dahlgren Avenue, Beersheba Springs, Grundy
County, Tennessee

Photo: Robert E. Dalton

Date: June 1979

Neg: Tennessee Historical Commission
Nashville, Tennessee

Hege Cottage (12)-looking southwest at east
(facade) and north elevations

21 of 60

DDE
MAR 20 1980

JAN 9 1980



Beersheba Springs Historic District
Dahlgren Avenue, Beersheba Springs, Grundy
County, Tennessee

Photo: Robert E. Dalton

Date: June 1979

DOE
MAR 20 1980

Neg: Tennessee Historical Commission
Nashville, Tennessee

Middle Hege Cottage (13)-looking east at west
elevation (facade)

22 of 60

JAN 9 1980



Beersheba Springs Historic District
Dahlgren Avenue, Beersheba Springs, Grundy
County, Tennessee

Photo: Robert E. Dalton

MAR 20 1980

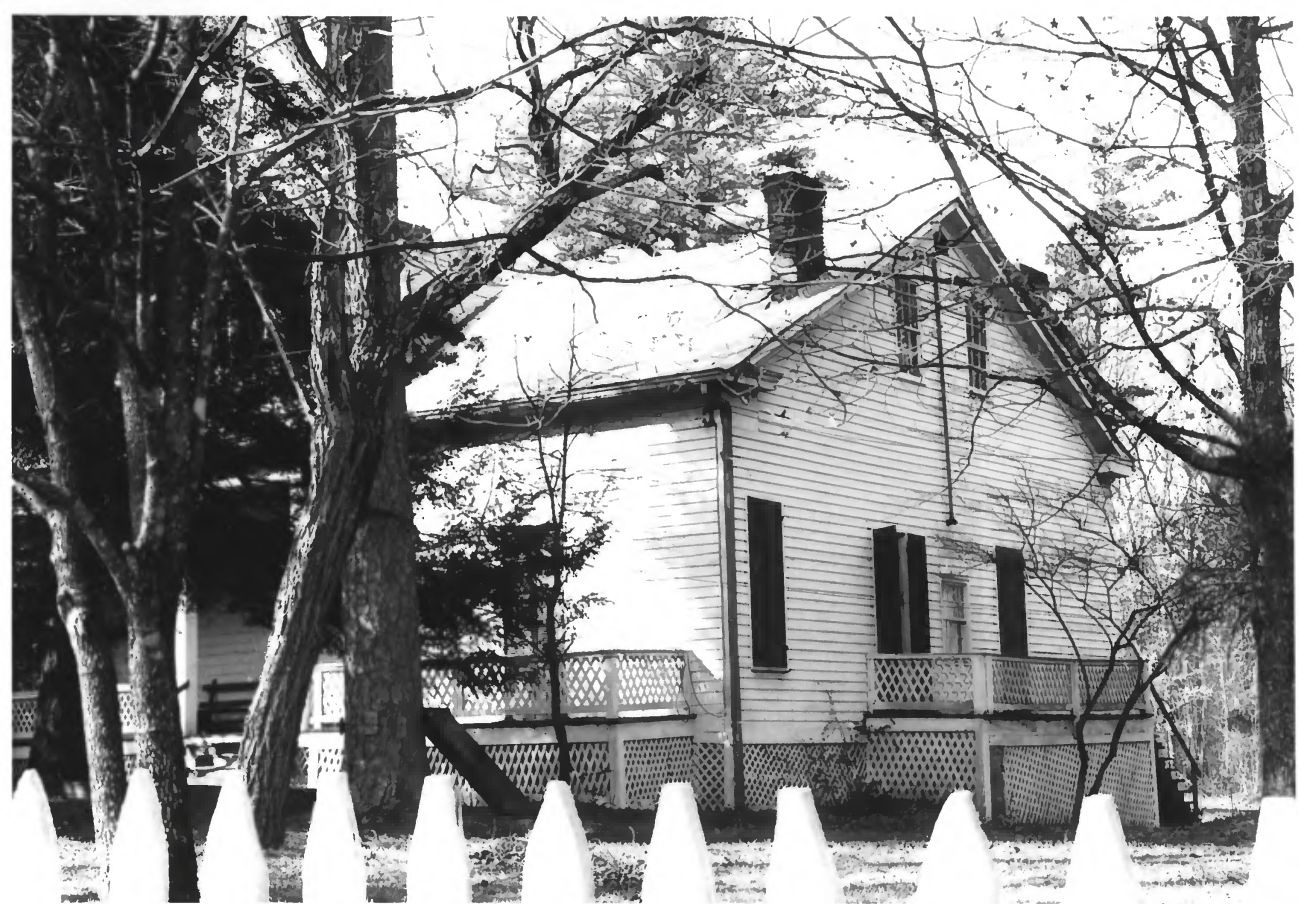
Date: June 1979

Neg: Tennessee Historical Commission
Nashville, Tennessee

Cockrill Cottage (14)-looking east at west
elevation (facade)

23 of 60

JAN 9 1980



Beersheba Springs Historic District
Dahlgren Avenue, Beersheba Springs, Grundy
County, Tennessee

Photo: Robert E. Dalton

DE
MAR 20 1980

Date: June 1979

Neg: Tennessee Historical Commission
Nashville, Tennessee

White House (15)-looking southwest at east
(facade) and north elevations

24 of 60

JAN 9 1980



Beersheba Springs Historic District
Dahlgren Avenue, Beersheba Springs, Grundy
County, Tennessee

Photo; Robert E. Dalton

Date: June 1979

Neg; Tennessee Historical Commission
Nashville, Tennessee

Other House (16)-looking west at east
elevation (facade)

25 of 60

DOE
MAR 20 1980

JAN 9 1980



Beersheba Springs Historic District
Tennessee 56, Beersheba Springs, Grundy
County, Tennessee

Photo: Robert E. Dalton

Date: June 1979

Neg: Tennessee Historical Commission
Nashville, Tennessee

Bishop Polk Cottage (17)-looking southeast at
north (facade) and west elevations

26 of 60

DOE
MAR 20 1980

JAN 9 1980



Beersheba Springs Historic District
Tennessee 56, Beersheba Springs, Grundy
County, Tennessee

Photo: Robert E. Dalton

Date: June 1979

Neg: Tennessee Historical Commission
Nashville, Tennessee

Bishop Otey Cottage (18)-looking southeast
at north (facade) and west elevations

27 of 60

DOE
MAR 20 1980

JAN 9 1980



Beersheba Springs Historic District
Grassy Ridge Road, Beersheba Springs, Grundy

County, Tennessee
Photo; Robert E. Dalton

Date; June 1979

DOE
MAR 20 1980

Neg; Tennessee Historical Commission
Nashville, Tennessee

Hemlock Hall (19)-looking south at north
elevation (facade)

28 of 60

JAN 9 1980



Beersheba Springs Historic District
Grassy Ridge Road, Beersheba Springs, Grundy
County, Tennessee

Photo: Robert E. Dalton

Date: June 1979

Neg: Tennessee Historical Commission
Nashville, Tennessee

Dr. Paul Eve Cottage (20)-looking south at
north elevation (facade)

29 of 60

JAN 9, 1980

D&E
MAR 20 1980



Beersheba Springs Historic District
Grassy Ridge Road, Beersheba Springs, Grundy
County, Tennessee

Photo: Robert E. Dalton ^{DOE} MAR 20 1980

Date: June 1979

Neg: Tennessee Historical Commission
Nashville, Tennessee

Nathan Cottage (21)-looking southeast at
north (facade) and west elevations.

30 of 60

JAN 9 1980



Beersheba Springs Historic District
Tennessee 56, Beersheba Springs, Grundy
County, Tennessee

Photo: Robert E. Dalton

Date: June 1979

Neg: Tennessee Historical Commission
Nashville, Tennessee

Hunerwald Cottage (22)-looking northeast at
south (facade) and west elevation

31 of 60 **JAN 9 1980**

D&E
MARK 20 1980



Beersheba Springs Historic District
Grassy Ridge Road, Beersheba Springs, Grundy
County, Tennessee

Photo: Robert E. Dalton

Date: June 1979

Neg: Tennessee Historical Commission
Nashville, Tennessee

Lover's Leap Cottage (23)-looking north at
south elevation (facade)

32 of 60

JAN 9 1980

DOE
MAR 20 1980



Beersheba Springs Historic District
Grassy Ridge Road, Beersheba Springs, Grundy
County, Tennessee

Photo: Robert E. Dalton

DOE
MAR 20 1980

Date: June 1979

Neg: Tennessee Historical Commission
Nashville, Tennessee

Ferriss Cottage (24)-looking north at south
elevation (facade)

33 of 60

JAN 9 1980



Beersheba Springs Historic District
Tennessee 56, Beersheba Springs, Grundy
County, Tennessee

Photo: Robert E. Dalton
Date: June 1979

^{DOE}
MAR 20 1980

Neg: Tennessee Historical Commission
Nashville, Tennessee

Roger Noone House (25)-looking north at
south elevation (facade)

34 of 60 **JAN 9 1980**



BEERSHEBA
LIBRARY

Beersheba Springs-Historic District

Tennessee 56, Beersheba Springs, Grundy
County, Tennessee

Photo: Robert E. Dalton

DOE
MAR 20 1980

Date: June 1979

Neg: Tennessee Historical Commission
Nashville, Tennessee

Beersheba Springs Library (26)-looking north
at south elevation (facade)

35 of 60

JAN

9 1980



Beersheba Springs Historic District
Armfield Avenue, Beersheba Springs, Grundy
County, Tennessee

Photo: Robert E. Dalton

Date: June 1979

Neg: Tennessee Historical Commission
Nashville, Tennessee

Nelson Andrews Cottage (27)-looking west at
east elevation (facade)

36 of 60

JAN 9 1980

DOE
MAR 20 1980



Beersheba Springs Historic District
Tennessee 56, Beersheba Springs, Grundy
County, Tennessee

Photo: Robert E. Dalton

DAE
MAR 20 1980

Date: June 1979

Neg: Tennessee Historical Commission
Nashville, Tennessee

Bunk House (28)-looking northwest at south
(facade) and east elevations

37 of 60 **JAN** 9 1980



29
Beersheba Springs Historic District
Tennessee 56, Beersheba Springs, Grundy
County, Tennessee

Photo: Robert E. Dalton

Date: June 1979

Neg: Tennessee Historical Commission
Nashville, Tennessee

Elsie Tate Cottage (29)-looking north at
south elevation (facade)

38 of 60 **JAN 9 1980**

DOE
MAR 20 1980



Beersheba Springs Historic District
Tennessee 56, Beersheba Springs, Grundy
County, Tennessee

Photo: Robert E. Dalton

Date: June 1979


Neg: Tennessee Historical Commission
Nashville, Tennessee

Douglas Brown Cottage (30)-looking north
at south elevation (facade)

39 of 60

JAN 9 1980

DOE
MAR 20 1980



CRACK CHAPEL
METHODIST CHURCH

Beersheba Springs Historic District
Tennessee 56, Beersheba Springs, Grundy
County, Tennessee

Photo: Robert E. Dalton

Date: June 1979

DOE
MAR 20 1980

Neg: Tennessee Historical Commission
Nashville, Tennessee

Grace Chapel Methodist Church (31)-looking
northeast at west (facade) and south
elevations

40 of 60

JAN 9 1980



Beersheba Springs Historic District
Tennessee 56, Beersheba Springs, Grundy
County, Tennessee

Photo: Robert E. Dalton

Date: June 1979

Neg: Tennessee Historical Commission
Nashville, Tennessee

Dan (32)-looking north at south elevation
(facade)

41 of 60

JAN 9 1980

DOE
MAR 20 1980



Beersheba Springs Historic District
Hege Avenue, Beersheba Springs, Grundy
County, Tennessee

Photo: Robert E. Dalton

^{DOE}
MAR 20 1980

Date: June 1979

Neg; Tennessee Historical Commission
Nashville, Tennessee

Methodist Parsonage (33)-looking northwest
at south (facade) and east elevations

42 of 60

JAN

9 1980



Beersheba Springs Historic District
Hege Avenue, Beersheba Springs, Grundy
County, Tennessee

Photo: Robert E. Dalton

Date: June 1979

DoE
MAR 20 1980

Neg: Tennessee Historical Commission
Nashville, Tennessee

T. W. Mayhew House (34)-looking south at
north elevation (facade)

43 of 60

JAN 9 1980



Beersheba Springs Historic District
Tennessee 56, Beersheba Springs, Grundy
County, Tennessee

DDE

Photo: Robert E. Dalton

MAR 20 1980

Date: June 1979

Neg: Tennessee Historical Commission
Nashville, Tennessee

G. W. McGee House (35)-looking southeast at
north (facade) and west elevations

44 of 60

JAN

9 1000



Beersheba Springs Historic District
Tennessee 56, Beersheba Springs, Grundy
County, Tennessee

Photo: Robert E. Dalton

MAR 20 1980
DOE

Date: June 1979

Neg: Tennessee Historical Commission
Nashville, Tennessee

General Store (36)-looking south at north
elevation (facade)

45 of 60



BEERSHEBA LAUNDRY MAT

ENTER
←



ENTER
→

Beersheba Springs Historic District
Tennessee 56, Beersheba Springs, Grundy
County, Tennessee

Photo; Robert E. Dalton

Date: June 1979

Neg: Tennessee Historical Commission
Nashville, Tennessee

Beersheba Laundrymat (37)-looking southwest
at north (facade) and east elevations

46 of 60 JAN

9 1980

MAR 20 1980
DOE



Beersheba Springs Historic District
Hege Avenue, Beersheba Springs, Grundy
County, Tennessee

Photo: Robert E. Dalton

Date: June 1979

Neg: Tennessee Historical Commission
Nashville, Tennessee

Lyndon Hillis Log House (38)-looking south
at north elevation (facade)

47 of 60 JAN 9 1980

MAR 20 1980
DOE



Beersheba Springs Historic District
Hege Avenue, Beersheba Springs, Grundy
County, Tennessee

Photo: Robert E. Dalton

Date: June 1979

Neg: Tennessee Historical Commission
Nashville, Tennessee

Lyndon Hillis House (39)-looking south at
north elevation (facade)

48 of 60

JAN 9 1980

MAR 20 1980
D O E



Beersheba Springs Historic District
Hege Avenue, Beersheba Springs, Grundy
County, Tennessee

Photo: Robert E. Dalton

Date: June 1979

MAR 20 1980
DOC

Neg: Tennessee Historical Commission
Nashville, Tennessee

Methodist Garage (40)-looking northwest at
south and east elevations

49 of 60 JAN 9 1980



Beersheba Springs Historic District
Armfield Avenue, Beersheba Springs, Grundy
County, Tennessee

Photo: Robert E. Dalton

Date: June 1979

Neg: Tennessee Historical Commission
Nashville, Tennessee

United Methodist Church (41)-lookin south-
east at north (facade) and west elevations

50 of 60 ~~JAN~~ 9 1980

D O E
MAR 20 1980



Beersheba Springs Historic District
Grassy Ridge Road, Beersheba Springs, Grundy
County, Tennessee

Photo: Robert E. Dalton

DOE
MAR 20 1980

Date: June 1979

Neg: Tennessee Historical Commission
Nashville, Tennessee

K. T. McKonnico House (42)-looking northwest
at south (facade) and east elevations

51 of 60

JAN 9 1980



3
Beersheba Springs Historic District
Grassy Ridge Road, Beersheba Springs, Grundy
County, Tennessee

Photo: Robert E. Dalton

Date: June 1979

DOE
MAR 20 1980

Neg: Tennessee Historical Commission
Nashville, Tennessee

Herschel Gower House (43)-looking north at
south elevation (facade)

52 of 60 ~~JAN~~ 9 1980



Beersheba Springs Historic District
Tennessee 56, Beersheba Springs, Grundy
County, Tennessee

Photo: Robert E. Dalton

Date: June 1979

Neg: Tennessee Historical Commission
Nashville, Tennessee

Ole Brown Museum (44)-looking northwest at
south (facade) and east elevations.

53 of 60

JAN 9 1980

DOE
MAR 20 1980



Royal Crown
Cola

DON'S SUPERETTE

JANES SHOP

PHILLIPS
66

Beersheba Springs Historic District
Tennessee 56, Beersheba Springs, Grundy
County, Tennessee

Photo: Robert E. Dalton

Date: June 1979

Neg: Tennessee Historical Commission
Nashville, Tennessee

Phillips 66 Service Station, U. S. Post
Office (45)-looking north at south elevation
54 of 60

DOE
MAR 20 1980

JAN 9 1980



Beersheba Springs Historic District
Armfield Avenue, Beersheba Springs, Grundy
County, Tennessee

Photo: Robert E. Dalton

^{DDE}
MAR 20 1980

Date: June 1979

Neg: Tennessee Historical Commission
Nashville, Tennessee

Fay Hill House Trailer (46)-looking southeast

55 of 60 JAN 9 1980



Beersheba Springs Historic District
Tennessee 56, Beersheba Springs, Grundy
County, Tennessee

Photo: Robert E. Dalton

Date: June 1979

Neg: Tennessee Historical Commission
Nashville, Tennessee

Mrs. Floyd Coppinger House (47)-looking
northwest at south (facade) and east
elevations

56 of 60

JAN 9 1980

DOE
MAR 20 1980



Beersheba Springs Historic District
Armfield Avenue, Beersheba Springs, Grundy
County, Tennessee

Photo: Robert E. Dalton

Date: June 1979

DOE
MAR 20 1980

Neg: Tennessee Historical Commission
Nashville, Tennessee

Charles Trabue Jr. House (48)-looking north
at south elevation (facade)

57 of 60

JAN 9 1980



Beersheba Springs Historic District
Armfield Avenue, Beersheba Springs, Grundy
County, Tennessee

Photo: Robert E. Dalton

^{DOE}
MAR 20 1980

Date: June 1979

Neg: Tennessee Historical Commission
Nashville, Tennessee

Victoria Morrison House Trailer (49)-looking
southeast at north and west elevations

58 of 60

JAN 9 1980



Beersheba Springs Historic District
Armfield Avenue, Beersheba Springs, Grundy
County, Tennessee

Photo: Robert E. Dalton

DOE
MAR 20 1980

Date: June 1979

Neg: Tennessee Historical Commission
Nashville, Tennessee

Robert Meyer House (50)-looking northwest
at south (facade) and east elevations

59 of 60

JAN 9 1980



5 Beersheba Springs Historic District
Armfield Avenue, Beersheba Springs, Grundy
County, Tennessee
Photo: Robert E. Dalton
Date: June 1979
Neg: Tennessee Historical Commission
Nashville, Tennessee
Dr. Ben Caldwell House (51)-looking south at
north elevation (facade)
60 of 60

JAN 9 1980

DOE
MAR 20 1980