

United States Department of the Interior National Park Service

DEC 28 1987

National Register of Historic Places Registration Form

NATIONAL REGISTER

This form is for use in nominating or requesting determinations of eligibility for individual properties or districts. See instructions in Guidelines for Completing National Register Forms (National Register Bulletin 16). Complete each item by marking "x" in the appropriate box or by entering the requested information. If an item does not apply to the property being documented, enter "N/A" for "not applicable." For functions, styles, materials, and areas of significance, enter only the categories and subcategories listed in the instructions. For additional space use continuation sheets (Form 10-900a). Type all entries.

1. Name of Property

historic name Hoosac Street School
other names/site number

2. Location

street & number 20 Hoosac Street
city, town Adams
state MA code MA county Berkshire code 003 zip code 01220

3. Classification

Ownership of Property: private (checked)
Category of Property: building(s) (checked)
Number of Resources within Property: Contributing 1, Noncontributing 0 buildings, 0 sites, 0 structures, 0 objects, Total 1
Name of related multiple property listing: N/A
Number of contributing resources previously listed in the National Register: 0

4. State/Federal Agency Certification

As the designated authority under the National Historic Preservation Act of 1966, as amended, I hereby certify that this nomination request for determination of eligibility meets the documentation standards for registering properties in the National Register of Historic Places and meets the procedural and professional requirements set forth in 36 CFR Part 60. In my opinion, the property meets (checked) does not meet the National Register criteria. See continuation sheet.
Signature of certifying official: Valerie A. Almage
Date: Dec. 22, 1987
Executive Director, Massachusetts Historical Commission; State Historic Preservation Officer

In my opinion, the property meets (checked) does not meet the National Register criteria. See continuation sheet.
Signature of commenting or other official
Date
State or Federal agency and bureau

5. National Park Service Certification

I, hereby, certify that this property is:
entered in the National Register. (checked)
determined eligible for the National Register.
determined not eligible for the National Register.
removed from the National Register.
other, (explain:)
Signature of the Keeper: Patrick W. Andrews
Date of Action: 2/10/88

6. Function or Use Hoosac Street School, Adams, Massachusetts

Historic Functions (enter categories from instructions)

Current Functions (enter categories from instructions)

Education: schooldomestic: multiple dwelling**7. Description**Architectural Classification
(enter categories from instructions)

Materials (enter categories from instructions)

Colonial RevivalQueen Annefoundation granitewalls brickroof slateother N/A

Describe present and historic physical appearance.

The Hoosac Street School, at 20 Hoosac Street in Adams, Massachusetts, was erected in 1887. The building faces south on a flat lot bounded on the south and west sides by paved streets. On the north side is a parking lot with space for eighteen vehicles. The school building is set back from Hoosac Street about 24 feet, while the distance to Mill St. in the west and to the abutting property (Adams Bakery, ca. 1940) in the east is about 25 feet. There is a large yard in the rear in which the parking lot is located.

The neighborhood surrounding the Hoosac Street School is a mix of one and two-story residential and commercial buildings dating to the late 19th and early 20th centuries. Directly across the street from the school are the Saint Stamilaus Kosta Church, school, and rectory, which were erected after the nominated school was constructed. The view out of the school's west windows is a spectacular and unimpeded view of Mt. Greylock, the highest peak in Massachusetts.

The Colonial Revival style Hoosac Street School is a 2-1/2-story brick structure, 7 bays by 4 bays, with a moderately pitched, slate, hipped roof with slightly projecting center gables (south and north facing) that extend to the ridge. There is a 12-foot-high bell cupola centered on the ridge. In addition, there are dormers on the east and west ends of the roof from which interior chimneys protrude. The structure sits on a rough granite foundation and has a raised basement and full attic.

The roof extends past the end of the building to form a wide-eaved wooden overhang which is decorated with wooden modillions on all four sides. Likewise, a band of corbelled brickwork runs the length of the cornice just beneath the modillions. Decorative brick belt courses also delineate each story. Wood shingles decorate the center gables, as well as those on the dormers and the front porch.

**United States Department of the Interior
National Park Service**

**National Register of Historic Places
Inventory—Nomination Form**

For NPS use only
received
date entered

Hoosac Street School,
Adams, Massachusetts

Item number 7

Page 2

Continuation sheet

ARCHAEOLOGY

While no prehistoric sites are currently recorded on the property, it is possible that sites are present. Located in close proximity to the Hoosac River and several of its tributary streams, the area would have provided seasonal resources attractive for native settlement and subsistence. At least four known sites are located within close proximity (one mile) to the school with several other sites in the general area. A small pond, now filled, was originally located northerly of the school building, which may have made this particular parcel of land a favorable location for native settlement. Any surviving sites would be important in documenting the patterns of prehistoric occupation within the town and along the Hoosac drainage, both of which are unknown at this time.

There is also significant historical and archaeological potential at the school site. This property was originally part of a farm which dated prior to the Revolutionary War. The original farmhouse was located across the street from the school. Also located on the farm was a brickyard reportedly on or near the school site. Further documentary studies and archaeological testing could help to determine whether or not structural remains exist on the school from the farmstead or claypit operation. Eighteenth century occupation-related features (trash pits, privies, wells) may also exist. Analysis of structural and feature remains would assist in defining the social, cultural and economic factors that characterized early rural life in Adams.

8. Statement of Significance Hoosac Street School, Adams, Massachusetts

Certifying official has considered the significance of this property in relation to other properties:

nationally statewide locally

Applicable National Register Criteria A B C D

Criteria Considerations (Exceptions) A B C D E F G

Areas of Significance (enter categories from instructions)

Education

Social History

Period of Significance

1887-1937

Significant Dates

Cultural Affiliation

N/A

Significant Person

N/A

Architect/Builder

Charles T. Rathbun

Walters and Fuller

State significance of property, and justify criteria, criteria considerations, and areas and periods of significance noted above.

The Hoosac Street School, Adams, retains integrity of design, setting, location, materials and workmanship as well as significant association with the development of education in the town and the assimilation of immigrants. It served as a training facility for the town's teachers and, because of its location, provided education to the offspring of the children of prominent families as well as those of the evergrowing number of immigrants. The building is a classic example of simple Colonial Revival-style school architecture. It meets Criteria A and C of the National Register of Historic Places on the local level.

The Hoosac Street School building derives its historical significance from the role it played in the developing educational needs of the community of Adams. The school's development reflects the growing needs of a small New England mill town. The changes that were taking place in many New England towns, as the evolution from an agricultural to an industrial society proceeded in the late 19th and early 20th centuries, are reflected in Adams' development. In 1886, the Adams School Committee faced the fact that the burgeoning school population had created serious overcrowding in the existing elementary schools, and voted to erect a new school near the center of town. Subsequently, the town voted to build an eight-room schoolhouse on land purchased from Wilson D. Carpenter for \$1,850. The location on Hoosac Street gave the school its name. T.C. Rathbun, an architect whose office was in Pittsfield, was hired to draw up plans for the building, which was erected and completed in 1887 at a total cost of about \$20,000.

At some point prior to Carpenter's ownership of the land, the property on which the school was later erected was part of the large farmstead of Daniel Staples. Staples' farmhouse, built prior to the Revolutionary War, stood across the street. (The farmhouse was demolished in 1911 to make room for the extant St. Stanislaus Kostlea Hall.) The brickyard of Clairman and Co. which provided bricks for the construction of the Renfrew textile mill--later the Adams Arnold Print Works--also stood on the farmstead and operated contemporaneously with the farm into the 1860s when the land was subdivided for residential and other uses. However, no associated buildings are known to have stood on the exact site of the Hoosac School.

See continuation sheet

9. Major Bibliographical References

Adams, Town of, Report of the School Committee 1886-1935, Adams-Cheshire Regional District Office.

Hoffman, Mildred, interview, May 8, 1985.

Northern Berkshire Registry of Deeds, Adams, Mass. Records.

See continuation sheet

Previous documentation on file (NPS):

- preliminary determination of individual listing (36 CFR 67) has been requested
- previously listed in the National Register
- previously determined eligible by the National Register
- designated a National Historic Landmark
- recorded by Historic American Buildings Survey # _____
- recorded by Historic American Engineering Record # _____

Primary location of additional data:

- State historic preservation office
- Other State agency
- Federal agency
- Local government
- University
- Other

Specify repository:

Massachusetts Historical Commission
Inventory #100

10. Geographical Data

Acreage of property Less than one acre

QUAD- North Adams SCALE- 1:25000

UTM References

A

1	8	6	5	4	6	1	0
---	---	---	---	---	---	---	---

4	7	2	0	7	0	0
---	---	---	---	---	---	---

Zone Easting Northing

B

--	--	--	--	--	--	--

--	--	--	--	--	--	--

--	--	--	--	--	--	--

Zone Easting Northing

C

--	--	--	--	--	--	--

--	--	--	--	--	--	--

--	--	--	--	--	--	--

D

--	--	--	--	--	--	--

--	--	--	--	--	--	--

--	--	--	--	--	--	--

See continuation sheet

Verbal Boundary Description

See Assessor's Map.

See continuation sheet

Boundary Justification

The nominated property includes all the land historically associated with the Hoosac Street School.

See continuation sheet

11. Form Prepared By

name/title Hulda Hardman Jowett/North Adams Hist. Comm. w/David R. Zarowin/MHC
 organization Massachusetts Historical Commission date July 27, 1987
 street & number 80 Boylston Street telephone (617) 727-8470
 city or town Boston state MA zip code 02116

United States Department of the Interior
National Park ServiceNational Register of Historic Places
Inventory—Nomination Form

Hoosac Street School,

Continuation sheet Adams, Massachusetts

Item number 3

Page 1



The fact that the school population of Adams nearly doubled in the decade before 1886 reflects two social changes. First, the law now required students to stay in school until they reached the age of 14. Secondly, the town's rapid industrial growth brought a similar rise in the population. The school's location near the textile mills meant the classes were filled with children from the mill housing nearby. The Superintendent of Schools at the time, Walter P. Beckwith, commented in his 1887 annual report on the improved child labor laws and the resulting increase in the number of students. Later when state child labor laws were amended to require children to attend school until the age of 16, the Hoosac Street School held evening "continuation" classes that enabled the mill owners to have children work during the day and still attend school for the time required by law. During the early 1900s, as increasing numbers of immigrants arrived from southern and eastern Europe, "Americanization" classes were held at the Hoosac Street School, reflecting the nativism prevalent at the time. While many of the students were mill operatives or had parents working as operatives, the Hoosac Street School also was attended by children from the wealthier classes. Local historians suggest that several graduates of the Hoosac School went on to become local political leaders.

From the beginning, the Hoosac School was a training facility for the town's elementary teachers, drawing first from the brightest high school women graduates and then from the North Adams Normal School. Enrollment was high from an early date and remained so even after two additional elementary schools--the Renfrew School and the Commercial Street School--were established in the 1890s. In addition to these elementary schools, Adams had a high school, the Academy, as early as the 1850s. Another public high school, the Plunkett School (now the town's middle school), was established in the early 1920s. Yet another high school, the Memorial School (now a primary school), was built in 1953, while the present-day high school was built in 1970. In the early 1970s enrollment began to fall at the Hoosac Street School as upper grades--5 and 6--were combined in the middle school. The Hoosac Street School closed in 1981, when all the town's elementary schools were consolidated at the Memorial School. When the Hoosac School closed there were 157 students in grades K-4.

The Hoosac Street School is a well-preserved amalgamation of Queen Anne and Colonial Revival styles. It incorporates some Queen Anne details such as the spindlework details on the south entry porch, the decorative brick patterns, and the pattern surfaces of the wood shingle on the gable and dormers. The Palladian windows and the rounded arch windows over the north and south entrances have large panes of glass surrounded by smaller ones, also a Queen Anne detail.

continued

**United States Department of the Interior
National Park Service**

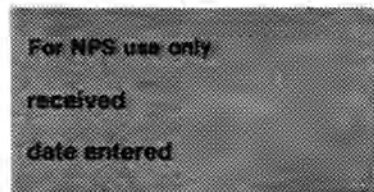
**National Register of Historic Places
Inventory—Nomination Form**

Hoosac Street School,
Adams, Massachusetts

Continuation sheet

Item number 3

Page 2

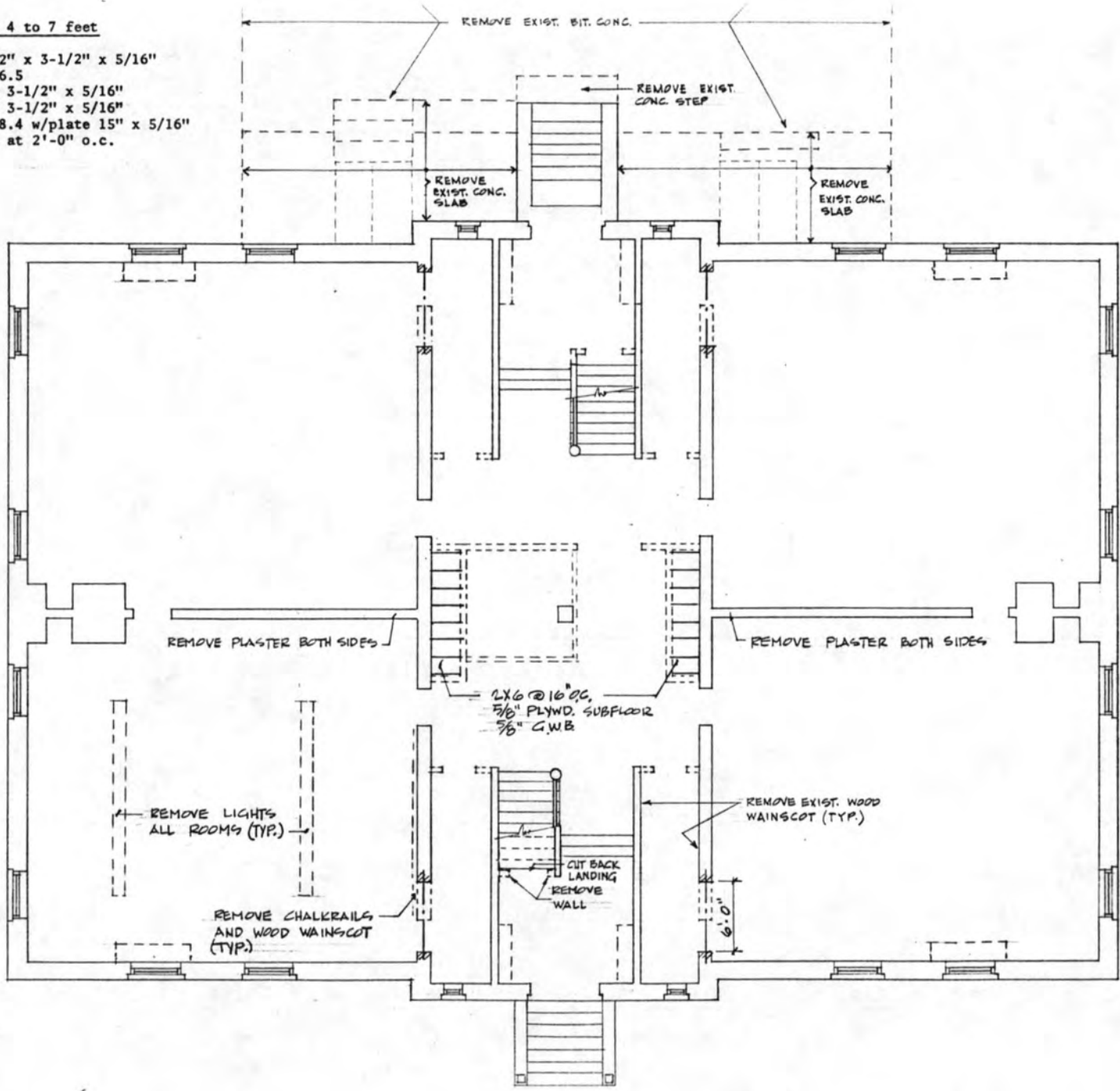


The structure is one of three surviving school buildings constructed in late 19th century Adams. The other two, the Renfrew School and the Commercial Street School were built in a similar style and also survive. All contracting work on the Hoosac Street School was done by local firms. George Dollar did stonework, Walters and Fuller the brickwork, and James Flemming, the wood construction. All were reputable businessmen responsible for some of the work done on town mills.

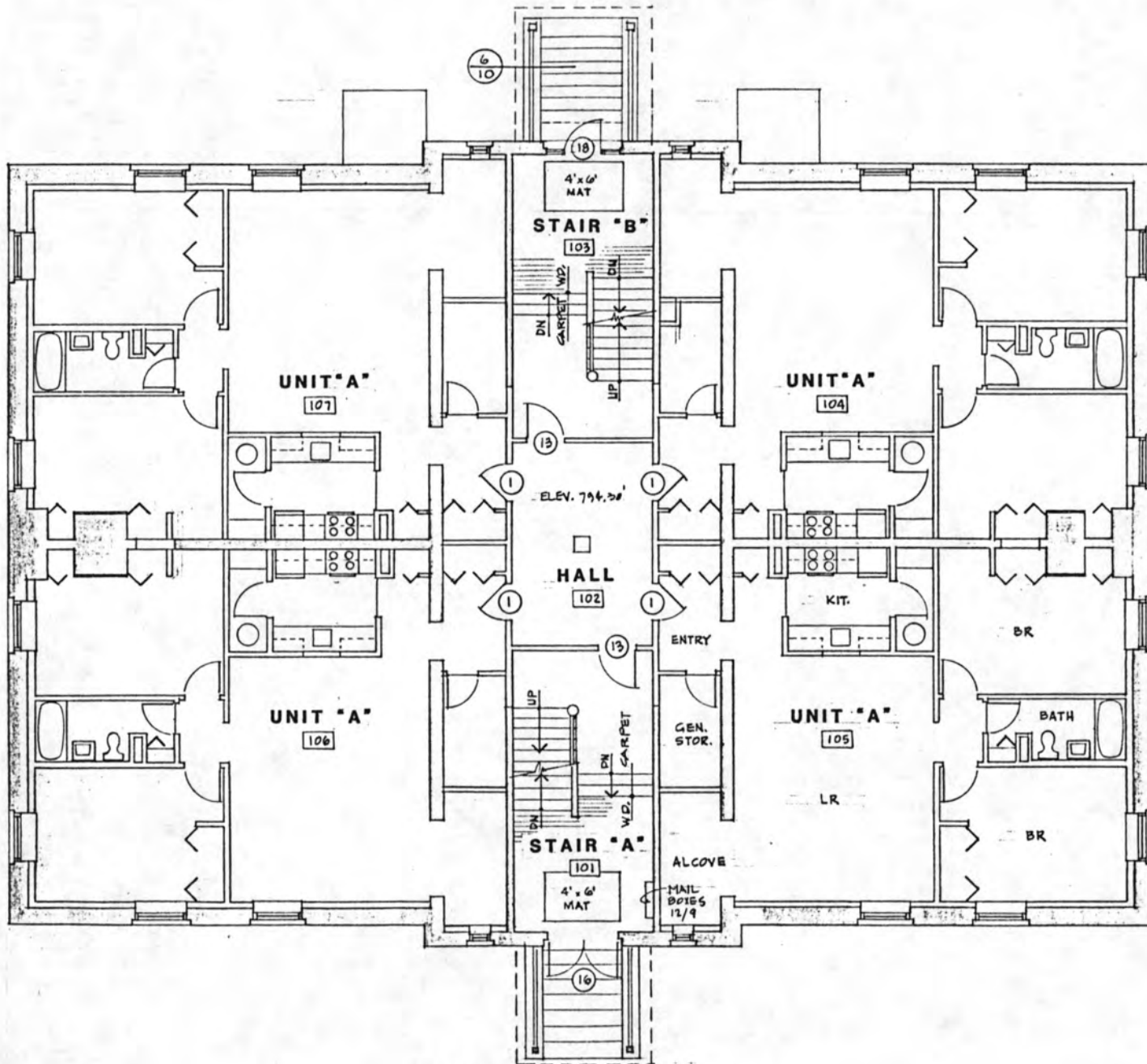
FIRST FLOOR, ORIGINAL PLAN

Span 4 to 7 feet

- 5/16" 1 3-1/2" x 3-1/2" x 5/16"
- 1 ST4B6.5
- 5/16" 2 4" x 3-1/2" x 5/16"
- 5/16" 3 4" x 3-1/2" x 5/16"
- 5/16" S8 x 18.4 w/plate 15" x 5/16"
- w/tees at 2'-0" o.c.



DOWS

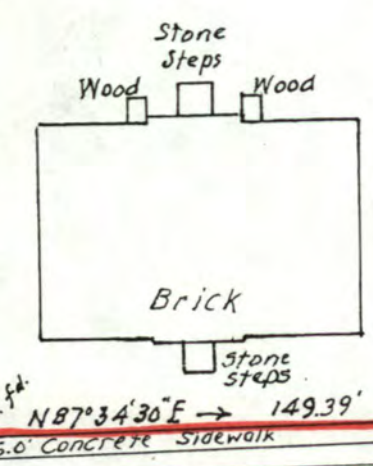


FIRST FLOOR PLAN

FIRST FLOOR, PRESENT PLAN



AREA 35,740 S.F.



Adams Bakery Association, Inc.
Bk. 496 P. 6

HOOSAC STREET

I certify that I have conformed to the rules and regulations of the Registers of Deeds in the preparation of this plan.

J. Franklin Bond

I certify that the property lines shown on this plan are lines dividing existing ownerships, and that no new lines for division of existing ownership or for new ways are shown.

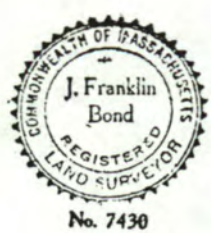
J. Franklin Bond

PLAN OF LAND
IN
ADAMS, MASS.
PREPARED FOR
A.J. Siner, Jr.

SCALE 1" = 40' JULY 27, 1982



HENRY C. NEFF ASSOCIATES, INC.
CIVIL ENGINEERS, LAND SURVEYORS
& CONSULTING FORESTERS
ADAMS, MASS.



RECORDING OFFICE
ADAMS, MASS.
JUL 29 1982
15

United States Department of the Interior
National Park Service

National Register of Historic Places
Continuation Sheet

Section number _____ Page _____

SUPPLEMENTARY LISTING RECORD

NRIS Reference Number: ²⁵⁴⁷ ~~87002271~~ Date Listed: 2/10/88

Hoosac Street School Berkshire MA
Property Name County State

Multiple Name

This property is listed in the National Register of Historic Places in accordance with the attached nomination documentation subject to the following exceptions, exclusions, or amendments, notwithstanding the National Park Service certification included in the nomination documentation.

Patrick Andrus 2/10/88
Signature of the Keeper Date of Action

=====
Amended Items in Nomination:

The area of significance for architecture is justified and indicated by criterion C; however, architecture as an applicable area of significance was inadvertently not entered as it should have been.

This information was confirmed with Ann Tait, Survey & Inventory Coordinator, MASHPO, by telephone on February 1, 1988.

DISTRIBUTION:

- National Register property file
- Nominating Authority (without nomination attachment)

87002547
SLR

NATIONAL REGISTER OF HISTORIC PLACES
EVALUATION/RETURN SHEET

Hoosac Street School
Berkshire County
MASSACHUSETTS

Substantive Review

Working No. DEC 28 1987
Fed. Reg. Date: 2-7-89
Date Due: 1/28/88 - 2/11/88
Action: ACCEPT 2-10-88
 RETURN
 REJECT

- resubmission
- nomination by person or local government
- owner objection
- appeal

Federal Agency: _____

Substantive Review: sample request appeal NR decision

Reviewer's comments:

Totally important for architectural significance & its contributions to historical developments in education and immigrant socialization. See SLR also.

Recom./Criteria Accept A+C
Reviewer SLR
Discipline Architectural History
Date 2/1/88
_____ see continuation sheet

Nomination returned for: _____ technical corrections cited below
_____ substantive reasons discussed below

1. Name

2. Location

3. Classification

Category	Ownership	Status	Present Use
	Public Acquisition	Accessible	

4. Owner of Property

5. Location of Legal Description

6. Representation in Existing Surveys

Has this property been determined eligible? yes no

7. Description

Condition

- excellent
- good
- fair
- deteriorated
- ruins
- unexposed

Check one

- unaltered
- altered

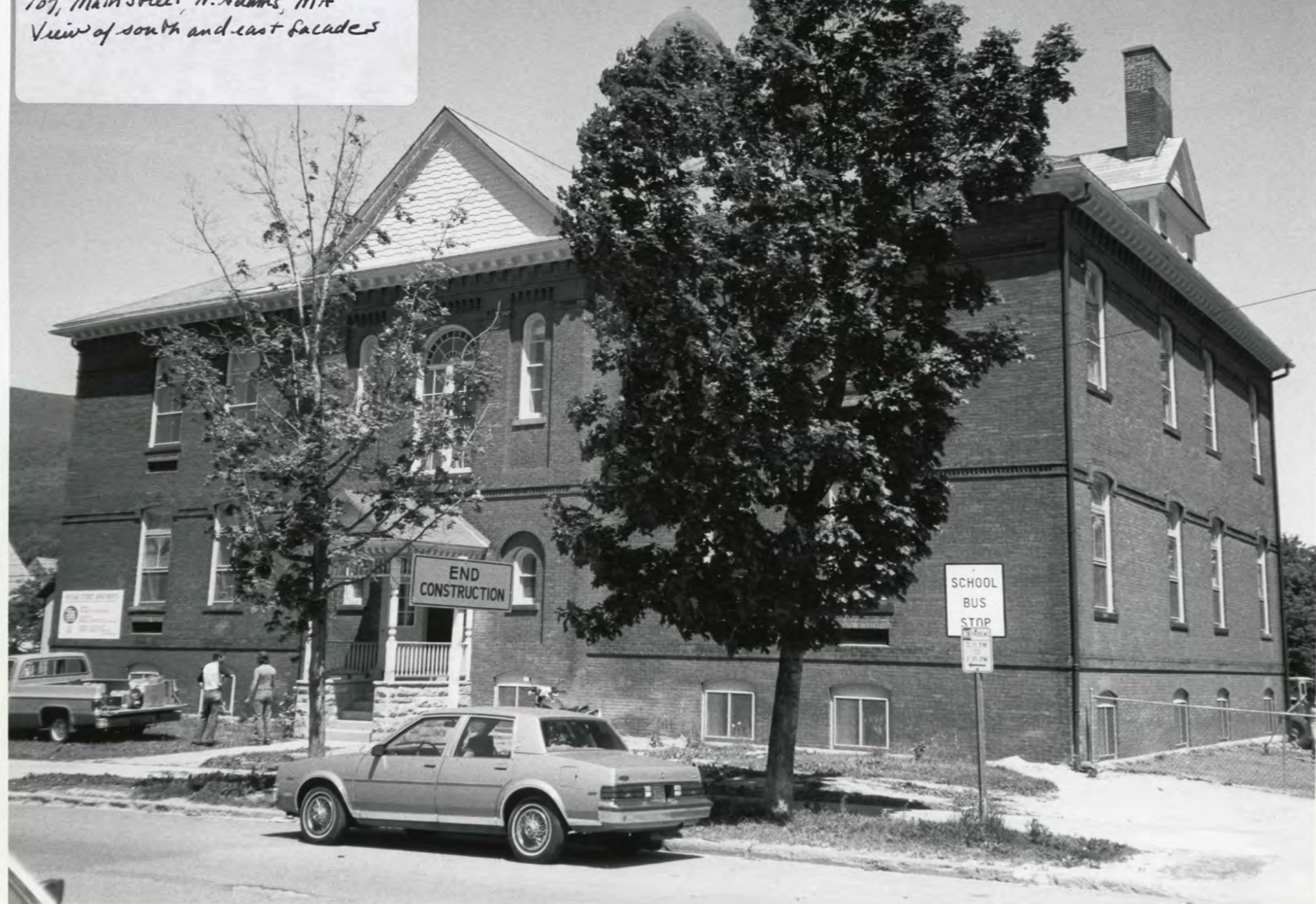
Check one

- original site
- moved date _____

Describe the present and original (if known) physical appearance

- summary paragraph
- completeness
- clarity
- alterations/integrity
- dates
- boundary selection

Hoosac Street School
20 Hoosac Street, Adams, MA
Photo by H.H. Towett June 20, 1985
Negative at Scars-ton Realty Co.,
107, Main Street, N. Adams, MA
View of south and east facades



HOOSAC STREET SCHOOL
20 Hoosac Street
Adams, MA

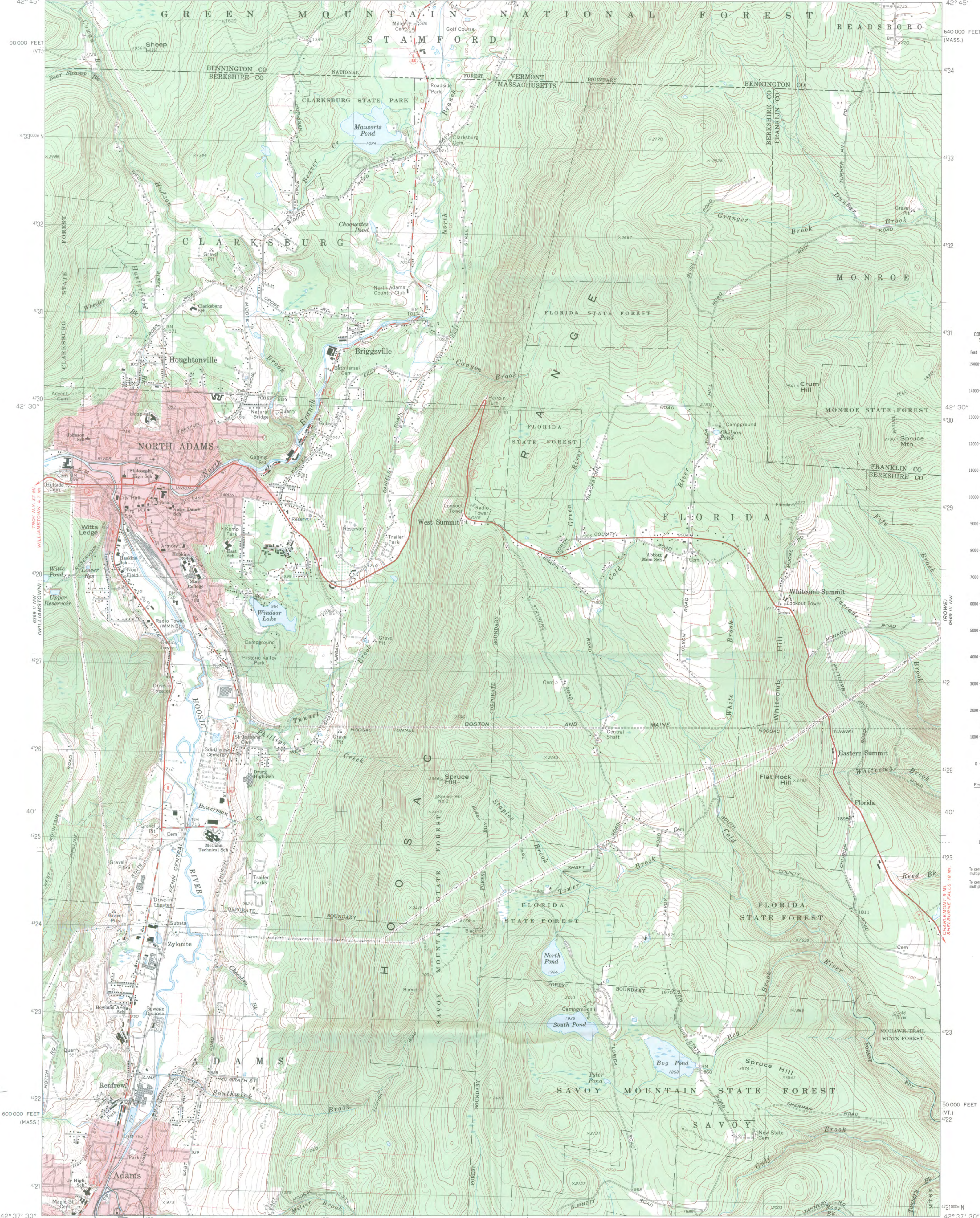
photographer - H. H. Jovett

June 1985

negative at Scarafoni Realty Co.

view of south + east facades

photo #1 of 1



Mapped, edited, and published by the Geological Survey
 Control by USGS, USC&GS, and Massachusetts Geodetic Survey
 Planimetry by photogrammetric methods from aerial photographs taken 1942. Topography by planimetric surveys 1944. Revised from aerial photographs taken 1972. Field checked 1973

Polyconic projection. 1927 North American datum
 10,000-foot grids based on Massachusetts coordinate system, mainland zone, and Vermont coordinate system
 1000-meter Universal Transverse Mercator grid, zone 18

Fine red dashed lines indicate selected fence and field lines where generally visible on aerial photographs. This information is unchecked
 Red tint indicates areas in which only landmark buildings are shown

UTM GRID AND 1973 MAGNETIC NORTH DECLINATION AT CENTER OF SHEET

SCALE 1:25 000
 1 MILE
 1 KILOMETER

CONTOUR INTERVALS 10 AND 20 FEET (SEE DIAGRAM)
 NATIONAL GEODETIC VERTICAL DATUM OF 1929

ROAD CLASSIFICATION
 Primary highway, hard surface
 Secondary highway, hard surface
 Light-duty road, hard or improved surface
 Unimproved road

Interstate Route
 U. S. Route
 State Route

QUADRANGLE LOCATION

NORTH ADAMS, MASS.-VT.
 N4237.5-W7300/7.5

1973

AMS 6369 II NE-SERIES V814

Hoosac Street School
 20 Hoosac Street
 Adams, MA
 Quad: North Adams
 scale: 1:25000
 UTM references:
 18/654610/4720700

United States Geological Survey map
North Adams Quadrant



P-534 920 345

The Commonwealth of Massachusetts

Office of the Secretary of State
Michael Joseph Connolly, Secretary

Massachusetts Historical Commission

Valerie A. Talmage

Executive Director

State Historic Preservation Officer

December 22, 1987

*Carol Shull
National Register of Historic Places
Department of the Interior
National Park Service
P.O. Box 37127
Washington, DC 20013-7127*

Dear Ms. Shull:

Enclosed you will find the nomination forms for the following properties:

Adams, Hoosac Street School, 20 Hoosac Street

Boston (Jamaica Plain), District 13 Police Station, 28 Seaverns Avenue

Cambridge (Cambridge MRA), George Gale House, 14-16 Clinton Street

Shelburne and Buckland, Shelburne Falls Historic District

They have been voted eligible by the State Review Board and have been signed by the State Historic Preservation Officer. Owners were notified of pending State Review Board consideration 30-75 days before the meeting and were afforded the opportunity to comment. No comments have been received to date.

Sincerely,

A handwritten signature in cursive script that reads "Betsy Friedberg".

*Betsy Friedberg
National Register Director
Massachusetts Historical Commission*

BF/es

Enclosure

DEC 28 1987