



- 1) Gaylord, Charles, House (1857)
- 2) Corvallis, Benton County, Oregon
- 3) Lynn Ketchum
- 4) October 8, 1989
- 5) 3106 NW Harrison, Corvallis, Oregon
- 6) Gaylord House in the process of being moved, looking northwest
- 7) 1 of 14



- 1) Gaylord, Charles, House (1857)
- 2) Corvallis, Benton County, Oregon
- 3) Kurt Norlin
- 4) May 25, 1990
- 5) Benton County Historical Museum
- 6) Current Gaylord House setting, looking south
- 7) 2 of 14



- 1) Gaylord, Charles, House (1857)
- 2) Corvallis, Benton County, Oregon
- 3) Kurt Norlin
- 4) May 25, 1990
- 5) Benton County Historical Museum
- 6) Gaylord House setting, looking north toward the former Washington School Building (c. 1925)
- 7) 3 of 14



- 1) Gaylord, Charles, House (1857)
- 2) Corvallis, Benton County, Oregon
- 3) Kurt Norlin
- 4) May 25, 1990
- 5) Benton County Historical Museum
- 6) Gaylord House setting, looking southeast
- 7) 4 of 14



- 1) Gaylord, Charles, House (1857)
- 2) Corvallis, Benton County, Oregon
- 3) Kurt Norlin
- 4) May 25, 1990
- 5) Benton County Historical Museum
- 6) East elevation (main facade)
- 7) 5 of 14



- 1) Gaylord, Charles, House (1857)
- 2) Corvallis, Benton County, Oregon
- 3) Kurt Norlin
- 4) May 25, 1990
- 5) Benton County Historical Museum
- 6) North elevation
- 7) 6 of 14



- 1) Gaylord, Charles, House (1857)
- 2) Corvallis, Benton County, Oregon
- 3) Kurt Norlin
- 4) May 25, 1990
- 5) Benton County Historical Museum
- 6) West elevation (rear elevation)
- 7) 7 of 14



- 1) Gaylord, Charles, House (1857)
- 2) Corvallis, Benton County, Oregon
- 3) Kurt Norlin
- 4) May 25, 1990
- 5) Benton County Historical Museum
- 6) looking northeast at south and east elevations
- 7) 8 of 14



- 1) Gaylord, Charles, House (1857)
- 2) Corvallis, Benton County, Oregon
- 3) Mary Gallagher
- 4) June 1989
- 5) Benton County Historical Museum
- 6) Wing on Gaylord House prior to move. Wing has been disassembled and is currently in storage awaiting possible reconstruction. Looking northwest from former site.
- 7) 9 of 14



- 1) Gaylord, Charles, House (1857)
- 2) Corvallis, Benton County, Oregon
- 3) Lynn Ketchum
- 4) February 1990
- 5) 3106 NW Harrison, Corvallis, Oregon
- 6) Pegged mortise and tendon connection of hewn sill. Looking up from beneath the house.
- 7) 10 of 14



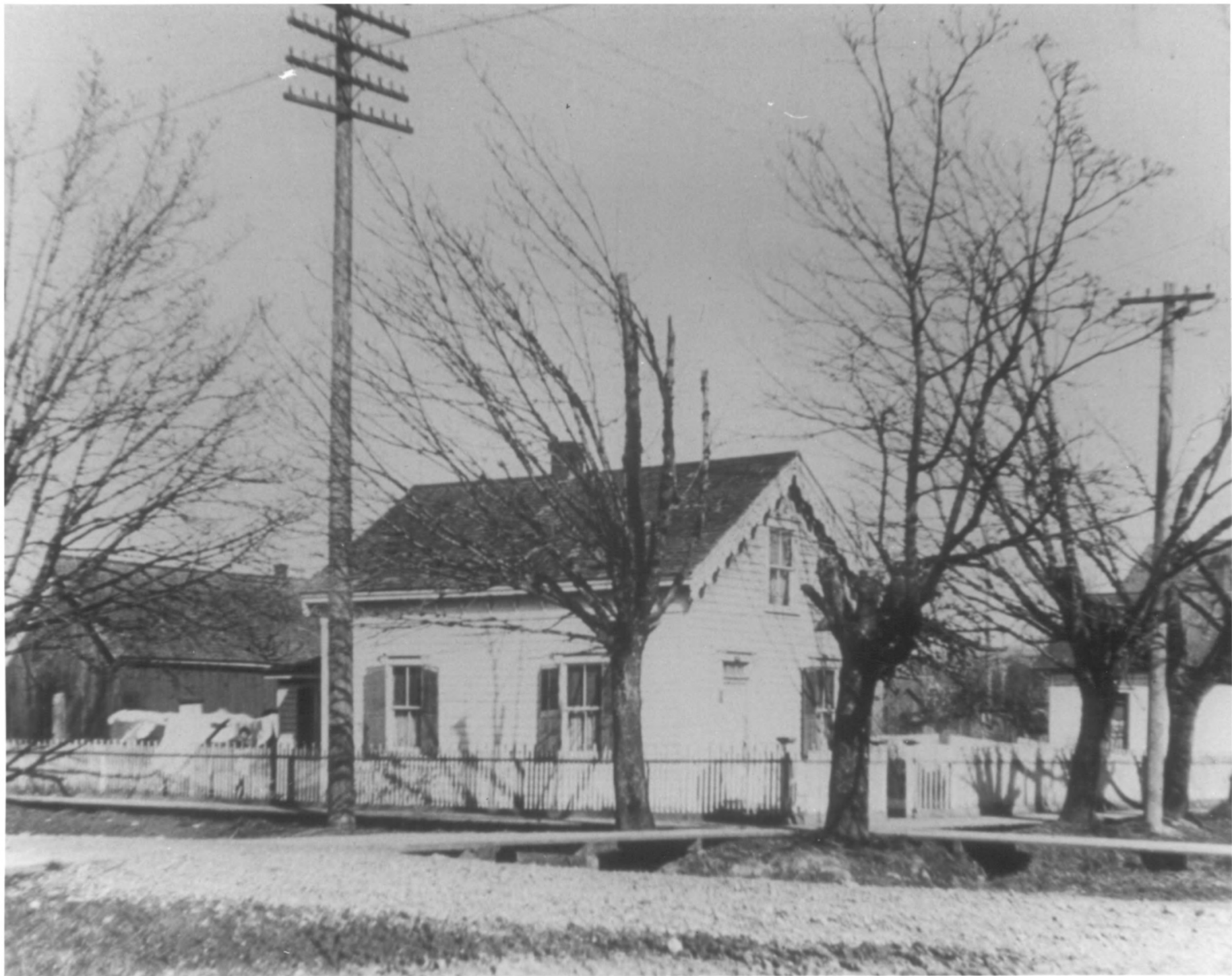
- 1) Gaylord, Charles, House (1857)
- 2) Corvallis, Benton County, Oregon
- 3) Kurt Norlin
- 4) May 25, 1990
- 5) Benton County Historical Museum
- 6) Hanging chimney supported by wide boards. Upstairs west bedroom, looking east.
- 7) 11 of 14



- 1) Gaylord, Charles, House (1857)
- 2) Corvallis, Benton County, Oregon
- 3) Kurt Norlin
- 4) May 25, 1990
- 5) Benton County Historical Museum
- 6) Staircase, looking north. Patch to left is former location of pantry door.
- 7) 12 of 14



- 1) Gaylord, Charles, House (1857)
- 2) Corvallis, Benton County, Oregon
- 3) Lynn Ketchum
- 4) February 1990
- 5) 3106 NW Harrison, Corvallis, Oregon
- 6) Upstairs east bed chamber, looking southeast.
- 7) 13 of 14



- 1) Gaylord, Charles, House, (1857)
- 2) Corvallis, Benton County, Oregon
- 3) Ball Studio
- 4) Date Unknown
- 5) S.W. 6th and Adams, Corvallis
- 6) Gaylord House in original location at the northwest corner of 4th and Jefferson Streets
- 7) 14 of 14