



Harveys

Sam Small
Jewelry Co.

ST. MARY'S
BOOK STORE

Fifth Avenue Historic District

202-204 Sixth Avenue North

Nashville, Davidson County, Tennessee

Photo by: Philip Thomason

Date: March 1983

Neg: Tennessee Historical Commission
Nashville, Tennessee

Facing northeast, facade (west elevation)

1 of 33



Fifth Avenue Historic District

526-530 Church Street

Nashville, Davidson County, Tennessee

Photo by: Philip Thomason

Date: March 1983

Neg: Tennessee Historical Commission
Nashville, Tennessee

Facing northeast, facade (southwest
elevation)

2 of 33



Harveys Harveys Harveys Harveys

Fifth Avenue Historic District

514-524 Church Street, Nashville, Tennessee

Nashville, Davidson County, Tennessee

Photo by: Philip Thomason

Date: March 1983

Neg: Tennessee Historical Commission
Nashville, Tennessee

Facing north, facade (south elevation)

3 of 33.



Song's Fashions

Fifth Avenue Historic District

510-512 Church Street,
Nashville, Davidson County, Tennessee

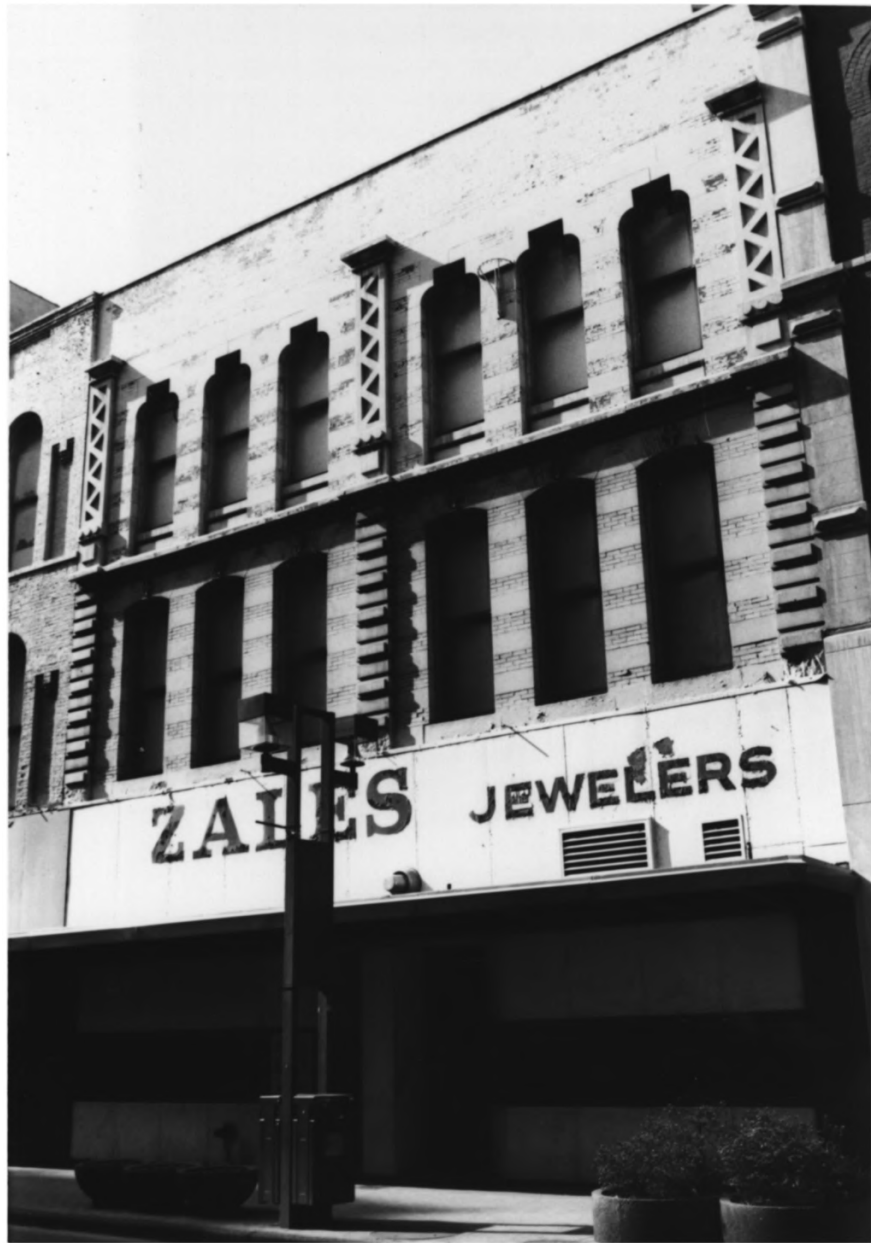
Photo by: Philip Thomason

Date: March 1983

Neg: Tennessee Historical Commission
Nashville, Tennessee

Facing north, facade (south elevation)

4 of 33



ZALES JEWELERS

Fifth Avenue Historic District

506-508 Church Street

Nashville, Davidson County, Tennessee

Photo by: Philip Thomason

Date: March 1983

Neg: Tennessee Historical Commission
Nashville, Tennessee

Facing north, facade (south elevation)

5 of 33



Fifth Avenue Historic District

201 Fifth Avenue North

Nashville, Davidson County, Tennessee

Photo by: Philip Thomason

Date: March 1983

Neg: Tennessee Historical Commission
Nashville, Tennessee

Facing northwest, facade (southeast
elevation)

6 of 33



Fifth Avenue Historic District

211 Fifth Avenue North

Nashville, Davidson County, Tennessee

Photo by: Philip Thomason

Date: March 1983

Neg: Tennessee Historical Commission
Nashville, Tennessee

Facing west, facade (east elevation)

7 of 33



Fifth Avenue Historic District

213 Fifth Avenue North

Nashville, Davidson County, Tennessee

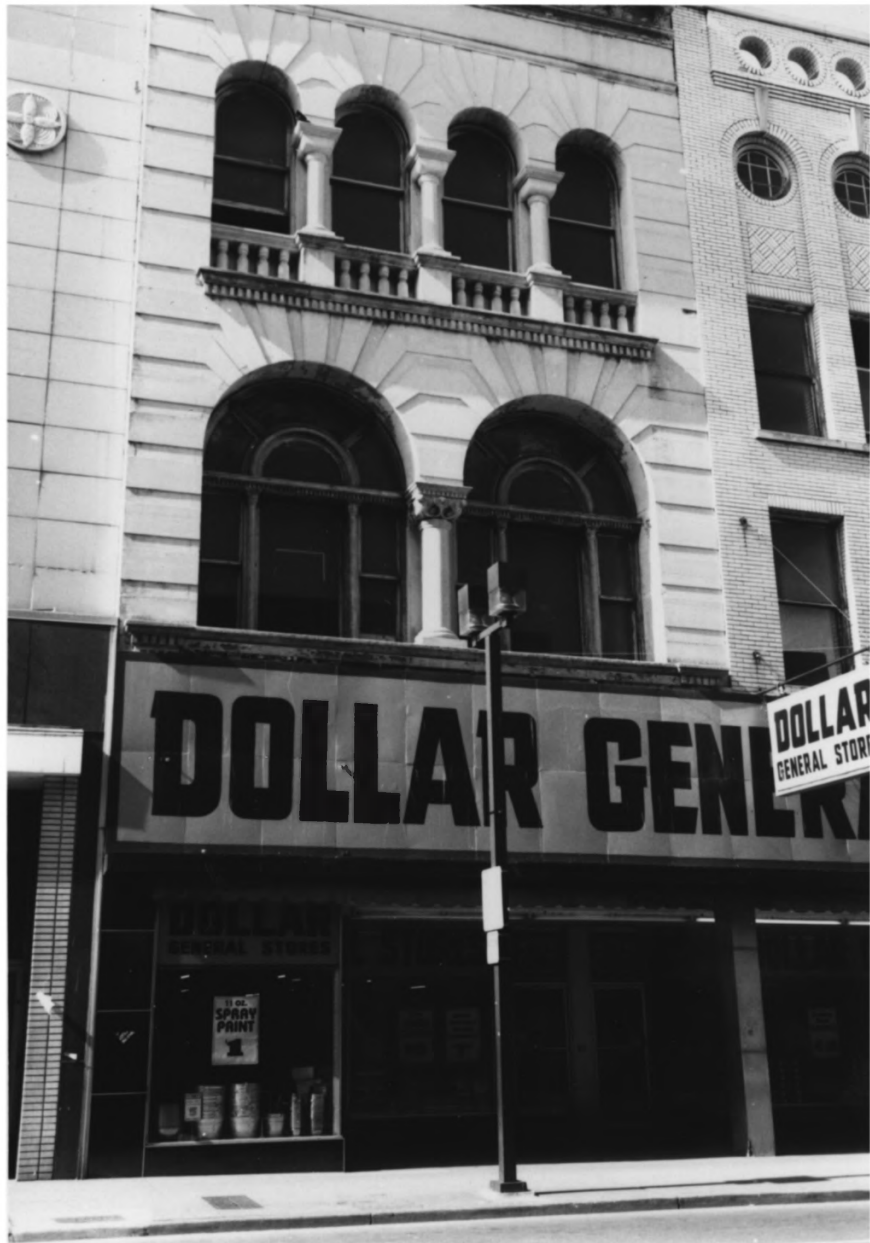
Photo by: Philip Thomason

Date: March 1983

Neg: Tennessee Historical Commission
Nashville, Tennessee

Facing west, facade (east elevation)

8 of 33



DOLLAR GENERAL STORE

**DOLLAR
GENERAL STORE**

11 OZ.
SPRAY
PRINT

Fifth Avenue Historic District

215 Fifth Avenue North

Nashville, Davidson County, Tennessee

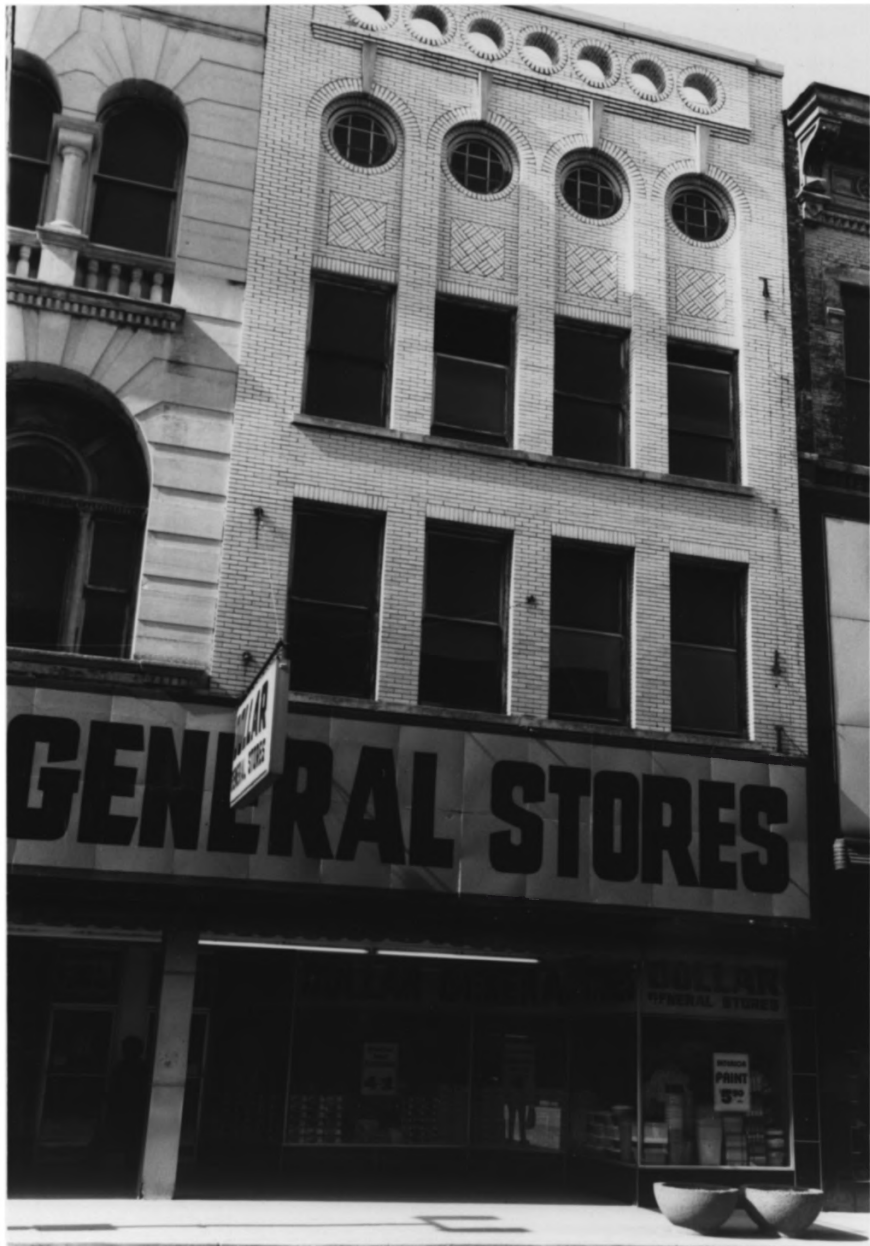
Photo by: Philip Thomason

Date: March 1983

Neg: Tennessee Historical Commission
Nashville, Tennessee

Facing west, facade (east elevation)

#9 fo 33



GENERAL STORES

WALK
UP
TO
2ND
FLOOR

GENERAL STORES
PRINT
3

Fifth Avenue Historic District

217 Fifth Avenue North

Nashville, Davidson County, Tennessee

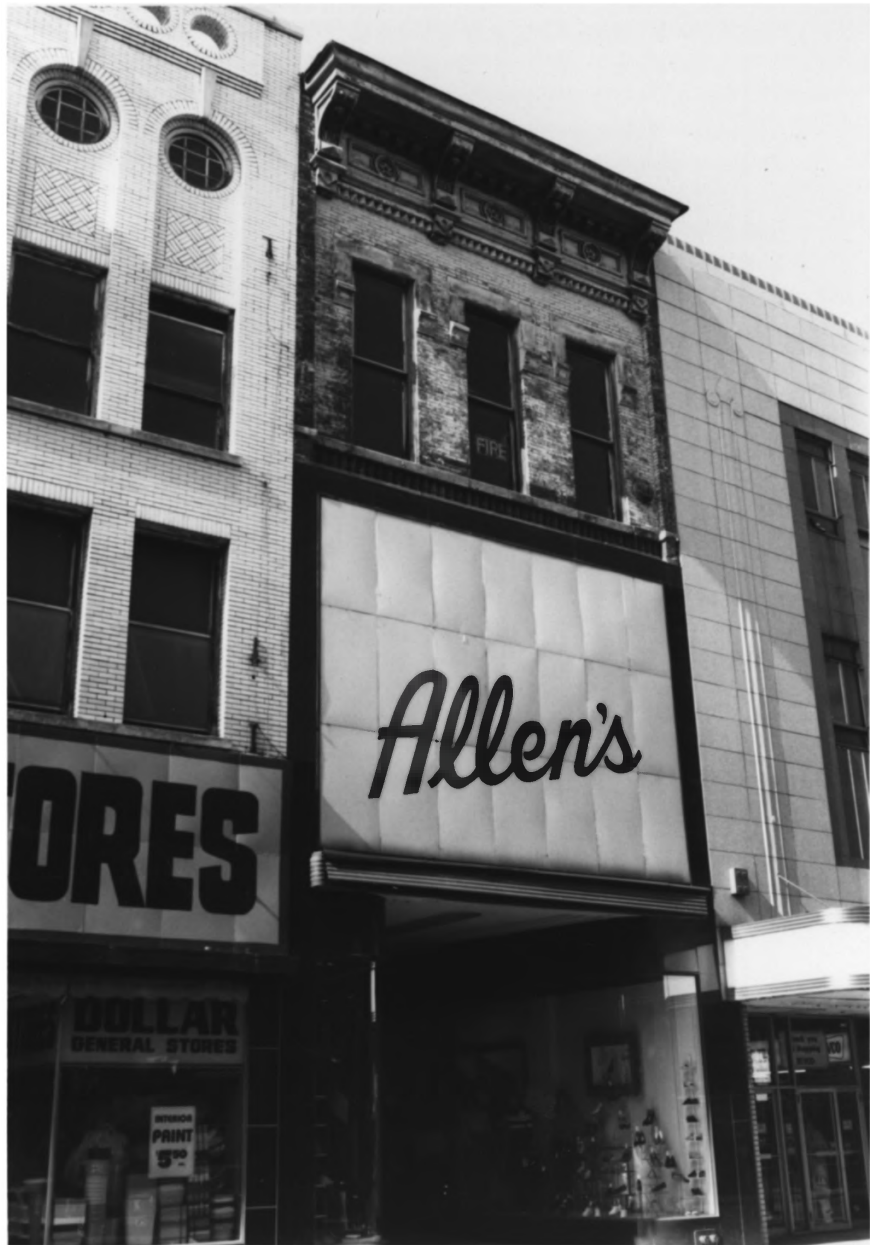
Photo by: Philip Thomason

Date: March 1983

Neg: Tennessee Historical Commission
Nashville, Tennessee

Facing west, facade (east elevation)

10 of 33



STORES

Allen's

**DOLLAR
GENERAL STORES**

PRINT
500
5-

FIRE

Fifth Avenue Historic District

219 Fifth Avenue North

Nashville, Davidson County, Tennessee

Photo by: Philip Thomason

Date: March 1983

Neg: Tennessee Historical Commission
Nashville, Tennessee

Facing northwest, facade (east elevation)

11 of 33



Fifth Avenue Historic District

221-225 Fifth Avenue North

Nashville, Davidson County, Tennessee

Photo by: Philip Thomason

Date: March 1983

Neg: Tennessee Historical Commission
Nashville, Tennessee

Facing northwest, facade (east elevation)

12 of 33



Fifth Avenue Historic District

227 Fifth Avenue North

Nashville, Davidson County, Tennessee

Photo by: Philip Thomason

Date: March 1983

Neg: Tennessee Historical Commission
Nashville, Tennessee

Facing northwest, facade (east elevation)

#13 of 33



Fifth Avenue Historic District

229-233 Fifth Avenue North

Nashville, Davidson County, Tennessee

Photo by: Philip Thomason

Date: March 1983

Neg: Tennessee Historical Commission
Nashville, Tennessee

Facing northwest, facade (east elevation)

14 of 33

Burt's

Shoes

BURT'S
SHOES

McD



Fifth Avenue Historic District

235 Fifth Avenue North

Nashville, Davidson County, Tennessee

Photo by: Philip Thomason

Date: March 1983

Neg: Tennessee Historical Commission
Nashville, Tennessee

Facing northwest, facade (east elevation)

15 of 33



Fifth Avenue Historic District

237 Fifth Avenue North

Nashville, Davidson County, Tennessee

Photo by: Philip Thomason

Date: March 1983

Neg: Tennessee Historical Commission
Nashville, Tennessee

Facing northwest, facade (east elevation)

16 of 33



Fifth Avenue Historic District

Union Street

Nashville, Davidson County, Tennessee

Photo by: Philip Thomason

Date: March 1983

Neg: Tennessee Historical Commission
Nashville, Tennessee

Facing east, streetscape

17 of 33



Fifth Avenue Historic District

417-419 Union Street

Nashville, Davidson County, Tennessee

Photo by: Philip Thomason

Date: March 1983

Neg: Tennessee Historical Commission
Nashville, Tennessee

Facing south, facade (north elevation)

18 of .33



W. N. ESTES & CO.

INCORPORATED

INVESTMENT
BANKERS

TELEPHONE

121

W. N. ESTES & CO.

INCORPORATED

INVESTMENT
BANKERS

Fifth Avenue Historic District

421 Union Street

Nashville, Davidson County, Tennessee

Photo by: Philip Thomason

Date: March 1983

Neg: Tennessee Historical Commission
Nashville, Tennessee

Facing south, facade (north elevation)

19 of 33



Fifth Avenue Historic District

423 Union Street

Nashville, Davidson County, Tennessee

Photo by: Philip Thomason

Date: March 1983

Neg: Tennessee Historical Commission
Nashville, Tennessee

Facing south, facade (north elevation)

20 of 33



Fifth Avenue Historic District

246 Fifth Avenue North

Nashville, Davidson County, Tennessee

Photo by: Philip Thomason

Date: March 1983

Neg: Tennessee Historical Commission
Nashville, Tennessee

Facing southeast, facade (west elevation)

21 of 33



shop

Cotton Shop

Fifth Avenue Historic District

244 Fifth Avenue North

Nashville, Davidson County, Tennessee

Photo by: Philip Thomason

Date: March 1983

Neg: Tennessee Historical Commission
Nashville, Tennessee

Facing east, facade (west elevation)

22 of 33



Fifth Avenue Historic District

240-242 Fifth Avenue North

Nashville, Davidson County, Tennessee

Photo by: Philip Thomason

Date: March 1983

Neg: Tennessee Historical Commission
Nashville, Tennessee

Facing northeast, facade (west elevation)

23 of 33



Fifth Avenue Historic District

238 Fifth Avenue North

Nashville, Davidson County, Tennessee

Photo by: Philip Thomason

Date: March 1983

Neg: Tennessee Historical Commission
Nashville, Tennessee

Facing east, facade (west elevation)

24 of 33



**FAMILY
BOOTERIE**

**FLORSHEIM
SHOES**

*Miss
Wonderful*

Fifth Avenue Historic District

234 Fifth Avenue North

Nashville, Davidson County, Tennessee

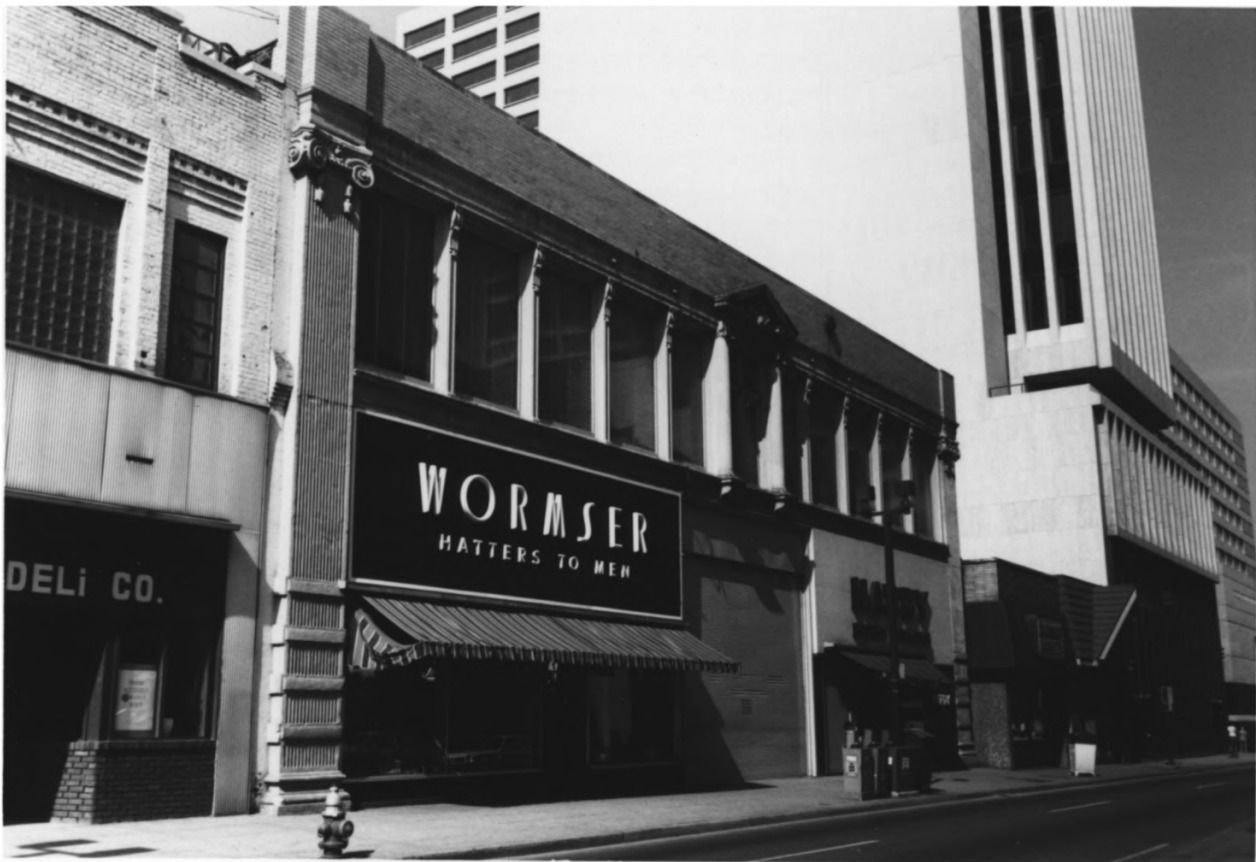
Photo by: Philip Thomason

Date: March 1983

Neg: Tennessee Historical Commission
Nashville, Tennessee

Facing east, facade (west elevation)

25 of 33



Fifth Avenue Historic District

Arcade-Fourth Avenue entrance

Nashville, Davidson County, Tennessee

Photo by: Philip Thomason

Date: March 1983

Neg: Tennessee Historical Commission
Nashville, Tennessee

Facing northwest, facade (east elevation

26 of 33

A black and white photograph of a three-story building facade. The ground floor is a dark storefront with a sign that reads "Manhattan DELI CO." in a stylized font. Above the storefront is a section of corrugated metal siding. The second floor features a large central window and two smaller windows on either side, all with decorative lintels. The upper portion of the building is made of light-colored brick. To the right, a classical column is visible. A fire hydrant is on the sidewalk in front of the building.

Manhattan DELI CO.

Fifth Avenue Historic District

223 Fourth Avenue North

Nashville, Davidson County, Tennessee

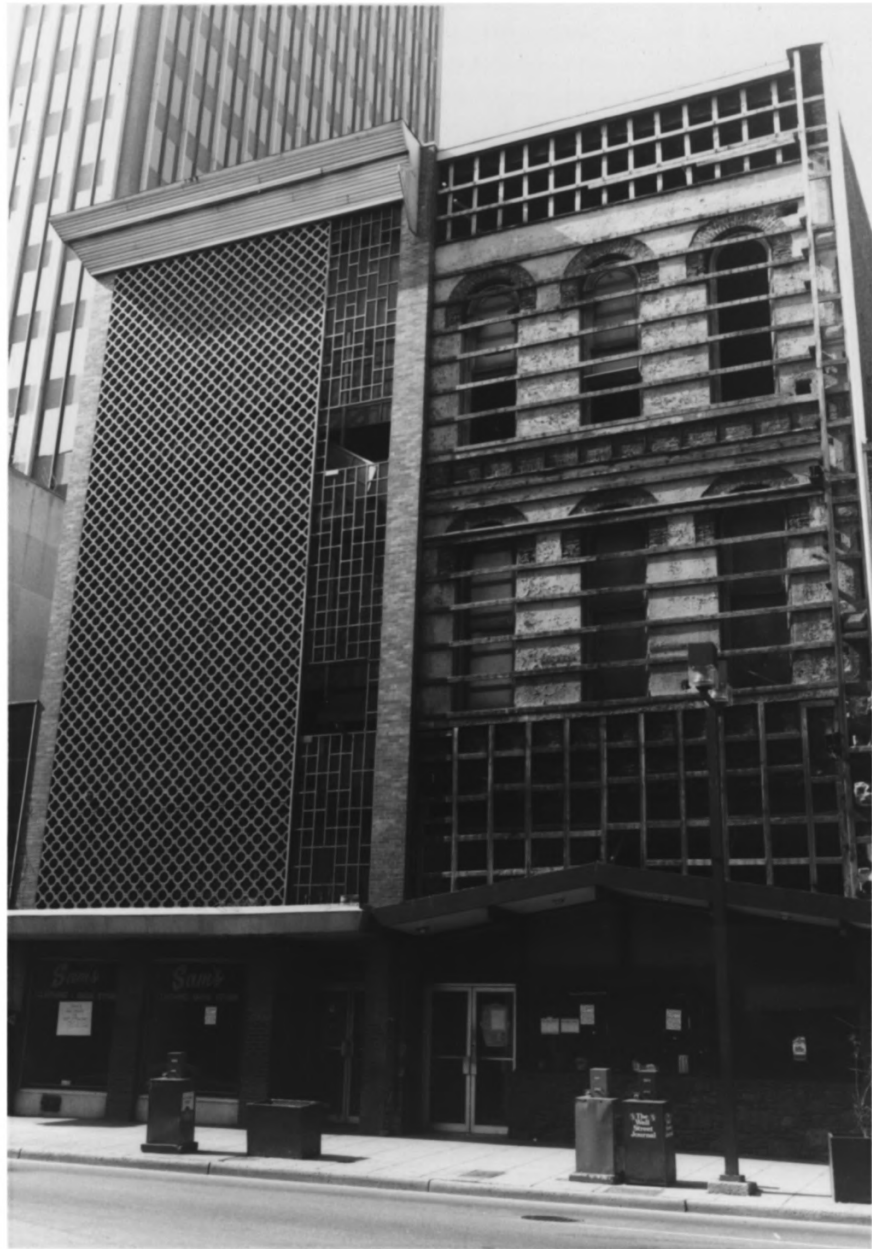
Photo by: Philip Thomason

Date: March 1983

Neg: Tennessee Historical Commission
Nashville, Tennessee

Facing west, facade (east elevation)

27 of 33



Fifth Avenue Historic District

219-221 Fourth Avenue North

Nashville, Davidson County, Tennessee

Photo by: Philip Thomason

Date: March 1983

Neg: Tennessee Historical Commission
Nashville, Tennessee

Facing west, facade (east elevation)

28 of 33



Fifth Avenue Historic District

221 Fourth Avenue North

Nashville, Davidson County, Tennessee

Photo by: Philip Thomason

Date: March 1983

Neg: Tennessee Historical Commission
Nashville, Tennessee

Facing west, facade (east elevation)

29 of 33



Fifth Avenue Historic District

Fifth Avenue North

Nashville, Davidson County, Tennessee

Photo by: Philip Thomason

Date: March 1983

Neg: Tennessee Historical Commission

Nashville, Tennessee

Facing southwest, streetscape

30 of 33



Fifth Avenue Historic District

Fifth Avenue North

Nashville, Davidson County, Tennessee

Photo by: Philip Thomason

Date: March 1983

Neg: Tennessee Historical Commission
Nashville, Tennessee

Facing southeast, streetscape from Union

31 of 33



Fifth Avenue Historic District
Streetscape - east side of Fifth Avenue Nor.
view from mid-block

Nashville, Davidson County, Tennessee

Photo by: Philip Thomason

Date: March 1983

Neg: Tennessee Historical Commission
Nashville, Tennessee

Facing north, streetscape

32 of 33



Fifth Avenue Historic District
Streetscape - south side of Union Street,
view to west

Nashville, Davidson County, Tennessee

Photo by: Philip Thomason

Date: March 1983

Neg: Tennessee Historical Commission
Nashville, Tennessee

Facing west, streetscape

33 of 33