

United States Department of the Interior  
National Park Service



793

# National Register of Historic Places Registration Form

This form is for use in nominating or requesting determination for individual properties and districts. See instruction in *How to Complete the National Register of Historic Places Registration Form* (National Register Bulletin 16A). Complete each item by marking "x" in the appropriate box or by entering the information requested. If an item does not apply to the property being documented, enter "N/A" for "not applicable." For functions, architectural classification, materials and areas of significance, enter only categories and subcategories from the instructions. Place additional entries and narrative items on continuation sheets (NPS Form 10-900a). Use a typewriter, word processor, or computer, to complete all items.

## 1. Name of Property

historic name First National Bank Building

other names/site number The Home Bank, 5MF1239

## 2. Location

street & number 502-506 Yampa Avenue [N/A] not for publication

city or town Craig [N/A] vicinity

state Colorado code CO county Moffat code 081 zip code 81625

## 3. State/Federal Agency Certification

As the designated authority under the National Historic Preservation Act, as amended, I hereby certify that this [x] nomination [ ] request for determination of eligibility meets the documentation standards for registering properties in the National Register of Historic Places and meets the procedural and professional requirements set forth in 36 CFR Part 60. In my opinion, the property [x] meets [ ] does not meet the National Register criteria. I recommend that this property be considered significant [ ] nationally [ ] statewide [x] locally.  
( See continuation sheet for additional comments [ ].)

James Edward Hartman State Historic Preservation Officer May 27, 1997  
Signature of certifying official/Title Date

State Historic Preservation Office, Colorado Historical Society  
State or Federal agency and bureau

In my opinion, the property [ ] meets [ ] does not meet the National Register criteria.  
( See continuation sheet for additional comments [ ].)

\_\_\_\_\_  
Signature of certifying official/Title Date

\_\_\_\_\_  
State or Federal agency and bureau

## 4. National Park Service Certification

I hereby certify that the property is:

[x] entered in the National Register  
See continuation sheet [ ].

[ ] determined eligible for the  
National Register  
See continuation sheet [ ].

[ ] determined not eligible for the  
National Register.

[ ] removed from the  
National Register

[ ] other, explain  
See continuation sheet [ ].

hac Signature of the Keeper 7/17/97 Date  
Edson H. Beall

First National Bank Building  
**Name of Property**

Moffat/CO  
**County/State**

**5. Classification**

**Ownership of Property**

(Check as many boxes as apply)

- private
- public-local
- public-State
- public-Federal

**Category of Property**

(Check only one box)

- building(s)
- district
- site
- structure
- object

**Number of Resources within Property**

(Do not count previously listed resources.)

Contributing	Noncontributing	
1	0	buildings
0	0	sites
0	0	structures
0	0	objects
1	0	Total

**Name of related multiple property listing.**

(Enter "N/A" if property is not part of a multiple property listing.)

N/A

**Number of contributing resources previously listed in the National Register.**

0

**6. Function or Use**

**Historic Function**

(Enter categories from instructions)

Commerce/Trade: financial institution  
Social: meeting hall  
\_\_\_\_\_  
\_\_\_\_\_  
\_\_\_\_\_  
\_\_\_\_\_

**Current Functions**

(Enter categories from instructions)

Commerce/Trade: business, specialty store  
\_\_\_\_\_  
\_\_\_\_\_  
\_\_\_\_\_  
\_\_\_\_\_

**7. Description**

**Architectural Classification**

(Enter categories from instructions)

Late 19th and Early 20th Century American  
Movements: Commercial Style  
\_\_\_\_\_  
\_\_\_\_\_  
\_\_\_\_\_

**Materials**

(Enter categories from instructions)

foundation Concrete  
walls Brick  
\_\_\_\_\_  
roof Asphalt  
other Wood  
\_\_\_\_\_

**Narrative Description**

(Describe the historic and current condition of the property on one or more continuation sheets.)

United States Department of the Interior  
National Park Service

National Register of Historic Places  
Continuation Sheet

FIRST NATIONAL BANK BUILDING  
Moffat County, CO

Section number 7 Page 1

---

**DESCRIPTION**

The 1917 First National Bank Building occupies two 25' lots on the northwest corner of the intersection of Yampa Avenue and Victory Way. The building, a brick, two-part commercial block, faces east onto Yampa Avenue, Craig's main business street. Its rectangular plan measures 50' in width x 125' in depth. The building is in good condition. Although some exterior alterations have been made over the years to accommodate changing tastes and tenant requirements, the building retains sufficient integrity in terms of location, design, materials, workmanship, and feeling to convey its significant role in the history of Craig's commercial development.

Secondary walls on the north and west are red brick. A deeper shade of red brick was used for the foundation walls on the south and east, and the walls of the primary south and east facades are tan brick. Trim is painted dark brown. The asphalt covered roof is flat.

On the south and east there is a stepped parapet capped with a course of rowlock brick. The painted metal cornice appears to be the original as shown in a circa 1918 photograph. Stringcourses of soldier coursed and header brick are found above and below the second floor windows and between the two floors. Window sills are cut stone. Windows in the second floor offices are wood framed 1/1 double hung sash that were installed in the 1970s, replacing the original 3/1 sash.

The south and east first floor retail storefronts have been modified. Wood panels below the windows and wood shingle awnings date from the 1970s. The original awnings were canvas. The wood paneling and awnings resulted from an effort to encourage building owners in the downtown area to adopt a rustic look. Five window openings on the south side of the former corner banking space were filled with glass block in the late 1940s. Metal awnings were placed above these windows prior to 1981.

On the east, a red painted metal awning, installed sometime after 1986, extends over two 3/1 windows and the slightly recessed, central entry. Several courses of brick are laid vertically within the recess. On the south, there is a side entry door, with transom and brick surrounds, leading into the banking space and a double door, also with transom and brick surrounds, that provides access to the stairway leading straight up to the second floor.

On the north and west, window openings have segmental arches of brick and cut stone sills. Windows are primarily wood framed 1/1 double hung sash. On the north, toward the west end, there are four paired windows, with wood filled transoms, marking the location of a former Masonic Lodge meeting space. The second floor height extends approximately two feet in this northwest portion of the building.

On the west a door, with transom, set in a brick segmental arch, opens onto the adjacent alley. On the north, a door opens onto a parking area that is behind a small adjacent one-story building.

United States Department of the Interior  
National Park Service

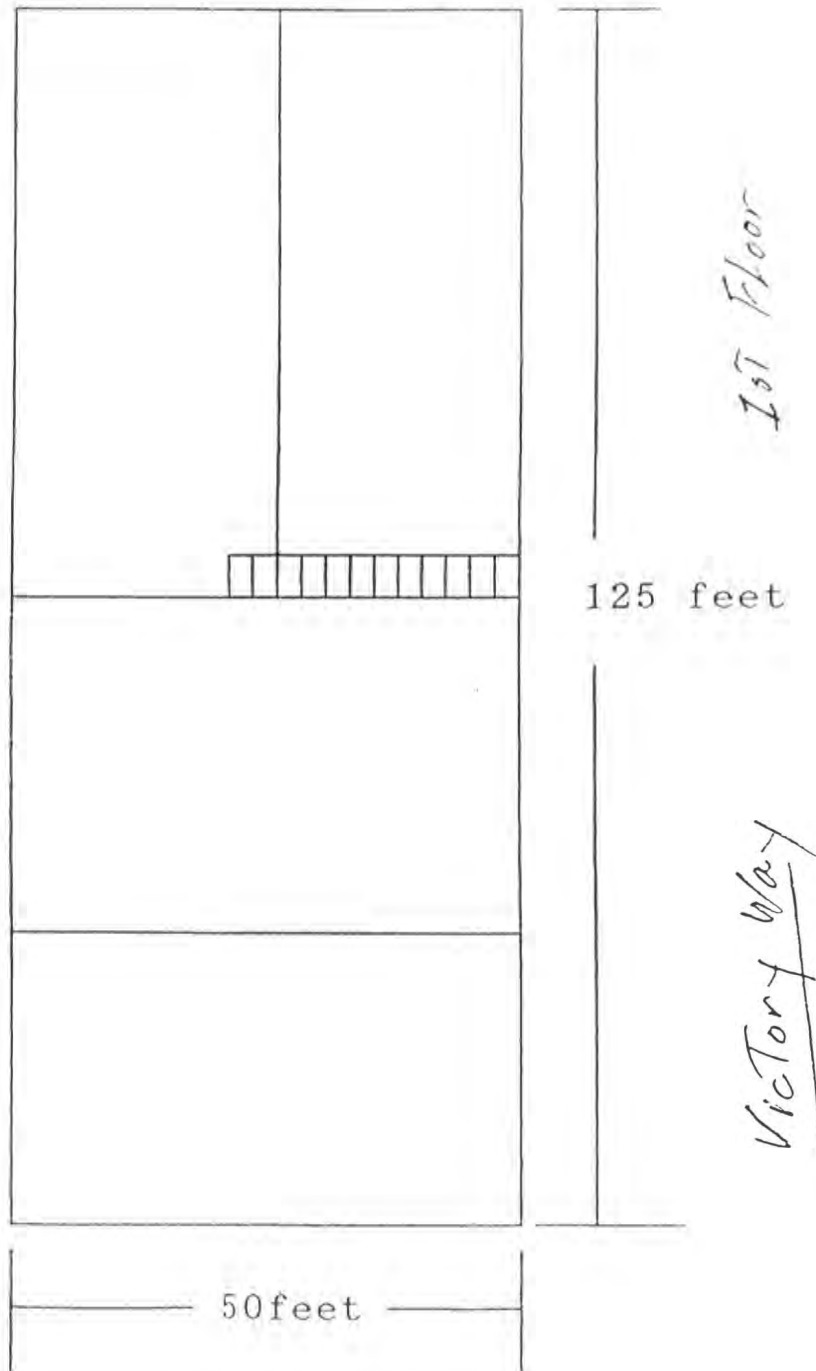
National Register of Historic Places  
Continuation Sheet

Section number 7 Page 2

FIRST NATIONAL BANK  
Moffat County, CO

FIRST FLOOR PLAN

Yampa Avenue



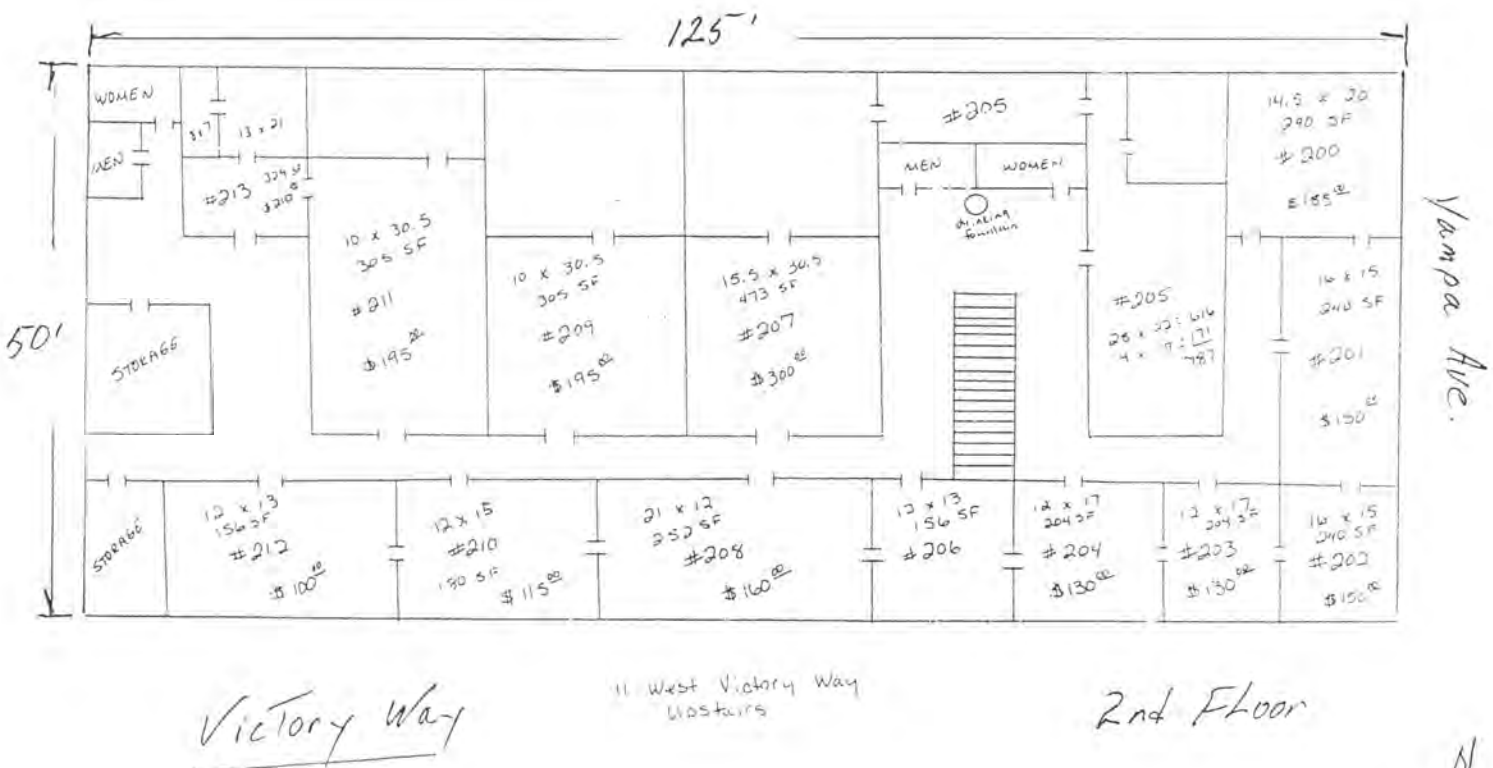
United States Department of the Interior  
National Park Service

# National Register of Historic Places Continuation Sheet

Section number 7 Page 3

FIRST NATIONAL BANK  
Moffat County, CO

## SECOND FLOOR PLAN



**United States Department of the Interior**  
National Park Service

**National Register of Historic Places**  
**Continuation Sheet**

Section number 7 Page 4

FIRST NATIONAL BANK BUILDING  
Moffat County, CO

---

The First National Bank Building is steam heated and was wired for electricity at the time of construction. Circa 1972, a new owner installed carpet and wood panelling in the second floor halls and offices. The overall configuration of the interior spaces remains much as constructed, but interior treatments have been covered and/or modified, in some cases, several times. The condition of original interior materials that may still exist is unknown.

First National Bank Building

Moffat/CO

**Name of Property**

**County/State**

## 8. Statement of Significance

### Applicable National Register Criteria

(Mark "x" in one or more boxes for the criteria qualifying the property for National Register listing.)

- A** Property is associated with events that have made a significant contribution to the broad patterns of our history.
- B** Property is associated with the lives of persons significant in our past.
- C** Property embodies the distinctive characteristics of a type, period, or method of construction or represents the work of a master, or possesses high artistic values, or represents a significant and distinguishable entity whose components lack individual distinction.
- D** Property has yielded, or is likely to yield, information important in prehistory or history.

### Criteria Considerations

(Mark "x" in all the boxes that apply.)

Property is:

- A** owned by a religious institution or used for religious purposes.
- B** removed from its original location.
- C** a birthplace or grave.
- D** a cemetery.
- E** a reconstructed building, object, or structure.
- F** a commemorative property.
- G** less than 50 years of age or achieved significance within the past 50 years.

### Narrative Statement of Significance

(Explain the significance of the property on one or more continuation sheets.)

## 9. Major Bibliographic References

### Bibliography

(Cite the books, articles and other sources used in preparing this form on one or more continuation sheets.)

### Previous documentation on file (NPS):

- preliminary determination of individual listing (36 CFR 67) has been requested
- previously listed in the National Register
- previously determined eligible by the National Register
- designated a National Historic Landmark
- recorded by Historic American Buildings Survey
- # \_\_\_\_\_
- recorded by Historic American Engineering Record
- # \_\_\_\_\_

### Areas of Significance

(Enter categories from instructions)

Commerce

Architecture

### Periods of Significance

1917-1947

### Significant Dates

N/A

### Significant Person(s)

(Complete if Criterion B is marked above.)

N/A

### Cultural Affiliation

N/A

### Architect/Builder

Taylor, Charles R.

### Primary location of additional data:

- State Historic Preservation Office
- Other State Agency
- Federal Agency
- Local Government
- University
- Other:

Name of repository:

Museum of Northwest Colorado

United States Department of the Interior  
National Park Service

National Register of Historic Places  
Continuation Sheet

FIRST NATIONAL BANK BUILDING  
Moffat County, CO

Section number 8 Page 5

## SIGNIFICANCE

The First National Bank Building is significant under Criterion A for Commerce and Criterion C for Architecture. Since its construction, the building has housed a variety of retail businesses, meeting facilities, and professional offices, many of which reflected changes in use brought about by the ups and downs of the local economy. The alterations to the first floor retail storefronts on the south and east have not seriously compromised the building's ability to convey its important role in Craig's architectural and commercial development.

The 1917 First National Bank Building was constructed during the period of economic optimism that followed the coming of the railroad in 1913. An impressive structure for its time and place, its commercial use has continued through periods of prosperity and depression in local economic activity. Occupying a prominent location in the center of Craig's downtown, the building is architecturally significant as the only local example of an early 20th century building type, the two-part commercial block. From the mid-19th century, well into the 20th century, the two-part commercial block was prevalent in the construction of small and moderate-sized commercial buildings throughout the country. Typically, their first floor level fenestration indicated retail uses, while the pattern on upper floors suggested more private uses such as offices, lodging rooms, or meeting facilities. The First National Bank Building clearly exhibits this distinctive horizontal division.

The original townsite of Craig, located in northwestern Colorado, was platted in 1888. The town was incorporated in 1908. By 1910, the population reached 400, and the local agricultural based economy depended primarily upon the raising of cattle and sheep. When Moffat County was established in 1911, Craig was designated as the county seat. In 1912, coal deposits were discovered in the area. The arrival of the Denver and Salt Lake Railway in 1913 improved market access for the region's products, and Craig became a regional transportation and supply center. By 1920, the town's population reached 1,300.

Since the 1920s, the ups and downs in the local economy have remained closely tied to the importance of what is found underground. When significant oil deposits were discovered nearby in 1924, Craig's rail connection and established population base assured its position as the beneficiary of increasing economic activity. After the Depression and World War II years, the discovery of uranium in the 1950s temporarily revived the economy. During the energy crisis of the 1970s, attention once again turned to coal.

## Construction and Tenant History

In June, 1916, a company was formed by Riley S. Hamilton, Thomas H. Wise, William H. Rose, Judge R. W. Finley, Frank Ranney, Frank R. Cowan, and Charles A. Van Dorn for the purpose of constructing a bank. The building was constructed on a lot owned by Hamilton and Wise at an estimated cost of \$20,000 to \$30,000. Major financing for the building was through a cattle rancher



**United States Department of the Interior**  
National Park Service

**National Register of Historic Places**  
**Continuation Sheet**

FIRST NATIONAL BANK BUILDING  
Moffat County, CO

Section number 8 Page 6

---

named Jones and a man named Stanton who was associated with the railroad. The building was constructed during the winter of 1916-1917, with completion scheduled by February. Carl Howelson, renown Norwegian born ski-jumper associated with the development of skiing in Steamboat Springs, and a stone mason and bricklayer by trade, is reported to have been responsible for the building's brickwork.

Initially, the local Masonic Lodge leased a majority of the second floor for their meeting hall and sub-leased the remaining office space. The corner retail space on the first floor housed the First National Bank, with Charles Van Dorn as its first president. The bank, also known as The Home Bank, was Craig's second bank, the first being Craig National Bank. On February 17, 1932, both closed after runs occurred on banks in the nearby towns of Hayden and Steamboat Springs. At a later date, the Moffat County State Bank moved into the building.

A variety of office tenants have occupied the second floor. During World War II, the second floor offices were occupied by a military school associated with the Army Signal Corps. At various times, the first floor retail space has housed businesses such as: J.C. Penney Co., Glassburn's Mens Store, Craig Drugs, Earl's Office Supply, and Pete Howard's Grocery Store. Current retail tenants include Commnet Cellular, MiRose Picture Framing, and the Bargain Barn. The Cornerstone Christian Center occupies the former banking space.

**United States Department of the Interior**  
National Park Service

**National Register of Historic Places**  
**Continuation Sheet**

Section number 9,10 Page 7

FIRST NATIONAL BANK BUILDING  
Moffat County, CO

---

**BIBLIOGRAPHY**

Allen, Kenneth R. Letter dated April 2, 1987 written by former owner. Copy on file at Colorado Historical Society.

Craig Empire. Craig, Colorado: June 21, 1916; June 28, 1916; October 18, 1916; August 29, 1917.

Klein, Naomi I. Historic Surveys of Colorado Communities, Inventory Record Form, First National Bank 5MF1239. Copy file at Colorado Historical Society: July 6, 1981.

Moffat County Courier. Craig, Colorado: December 20, 1917.

The Daily Press. Craig, Colorado: December 22, 1989; April 3, 1990.

"Two of Colorado's Future Oil Cities." Rocky Mountain News. Denver, Colorado: September 21, 1924.

"Vanatta Apartments" (5MF3875). National Register Nomination Form. Colorado Historical Society: Listed 01/11/96.

**GEOGRAPHICAL DATA**

**Verbal Boundary Description**

Lots 23 & 24 of Block 29, Craig original townsite.

**Boundary Justification**

The boundary includes the entire parcel historically associated with the building.

First National Bank Building

Moffat/CO

**Name of Property**

**County/State**

**10. Geographical Data**

**Acreage of Property** less than one acre

**UTM References**

(Place additional UTM references on a continuation sheet.)

1. 13 284220 4487770  
Zone Easting Northing

3. Zone Easting Northing

2. Zone Easting Northing

4. Zone Easting Northing

See continuation sheet

**Verbal Boundary Description**

(Describe the boundaries of the property on a continuation sheet.)

**Boundary Justification**

(Explain why the boundaries were selected on a continuation sheet.)

**11. Form Prepared By**

name/title Bernie Rose (Edited by S. Doggett)

organization Moffat County Preservation Board date 12/17/96

street & number 590 Yampa Avenue telephone 970-824-6360

city or town Craig state CO zip code 81625

**Additional Documentation**

Submit the following items with the completed form:

**Continuation Sheets**

**Maps**

A **USGS map** (7.5 or 15 minute series) indicating the property's location.

A **Sketch map** for historic districts and properties having large acreage or numerous resources.

**Photographs**

Representative **black and white photographs** of the property.

**Additional Items**

(Check with the SHPO or FPO for any additional items)

**Property Owner**

(Complete this item at the request of SHPO or FPO.)

name William van der Plas

street & number 1941 La Cuesta telephone 714-832-8273

city or town North Tustin state CA zip code 92705

**Paperwork Reduction Act Statement:** This information is being collected for applications to the National Register of Historic Places to nominate properties for listing or determine eligibility for listing, to list properties, and to amend existing listings. Response to this request is required to obtain a benefit in accordance with the National Historic Preservation Act, as amended (16 U.S.C. 470 *et seq.*).

**Estimated Burden Statement:** Public reporting burden for this form is estimated to average 18.1 hours per response including time for reviewing instructions, gathering and maintaining data, and completing and reviewing the form. Direct comments regarding this burden estimate or any aspect of this form to the Chief, Administrative Services Division, National Park Service, P.O. Box 37127, Washington, DC 20013-7127; and the Office of Management and Budget, Paperwork Reductions Projects (1024-0018), Washington, DC 20503.

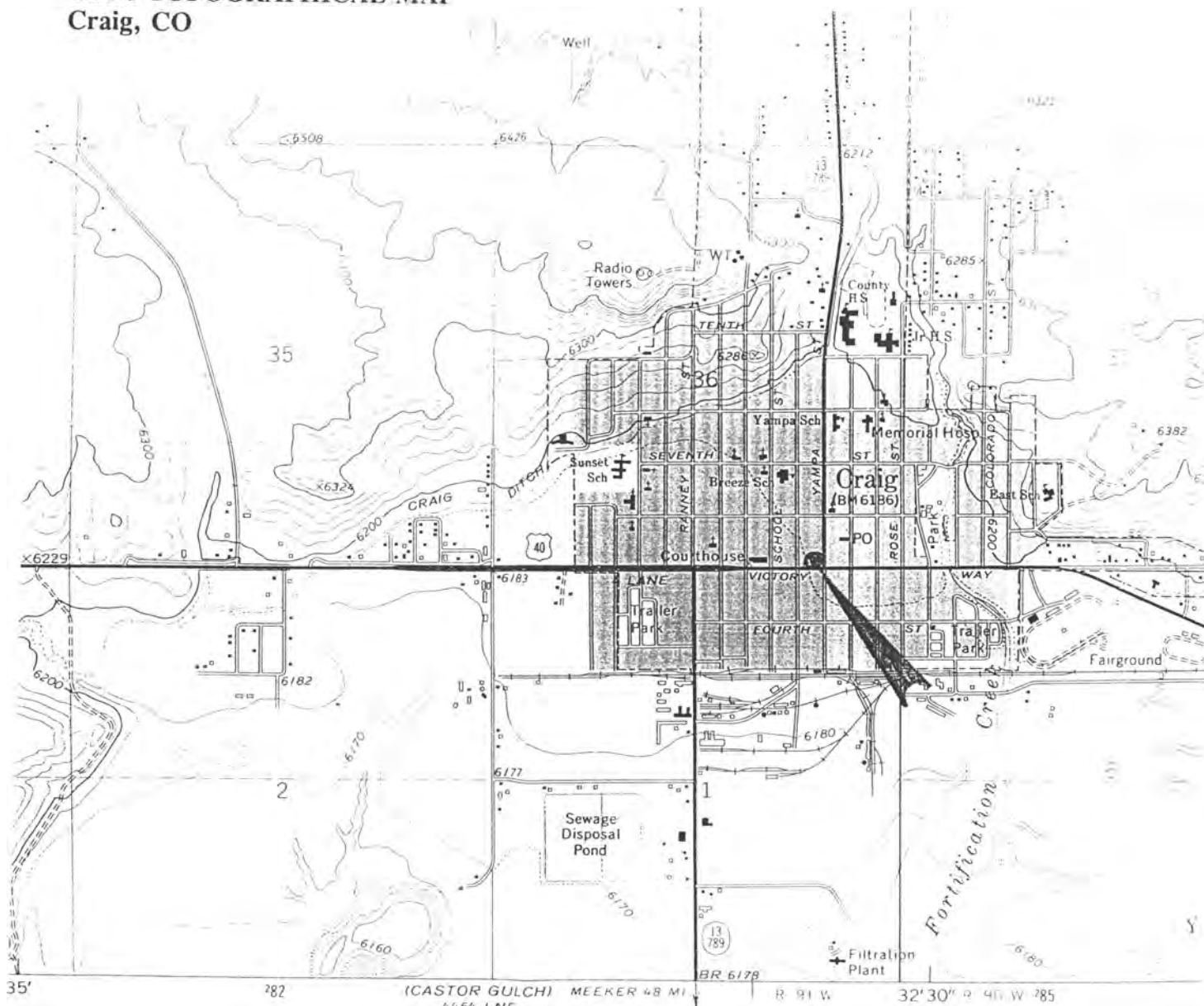
United States Department of the Interior  
National Park Service

National Register of Historic Places  
Continuation Sheet

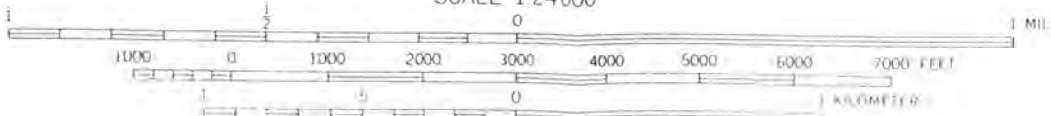
Section number Additional Materials Page 8

FIRST NATIONAL BANK  
Moffat County, CO

USGS TOPOGRAPHICAL MAP  
Craig, CO



SCALE 1:24000



CONTOUR INTERVAL 20 FEET  
DOTTED LINES REPRESENT 10-FOOT CONTOURS  
DATUM IS MEAN SEA LEVEL



QUADRANGLE LOCATION