



ROYAL DISCOUNT FURNITURE

ROYAL CORNER

ROYAL DISCOUNT

HARD  
MENS SH

B. Lowenstein & Brothers Building  
27 S. Main

Memphis, Shelby County, Tennessee

Photographer: David Schuermann

Date: October 1982

Negative: Bologna & Associates  
Shrine Building

Memphis, Tennessee

Southeast corner, facing northwest

# 1 of 10



B. Lowenstein & Brothers Building

27 S. Main

Memphis, Shelby County, Tennessee

Photographer: David Schuermann

Date: October 1982

Negative: Bologna & Associates

Shrine Building

Memphis, Tennessee

East elevation, facing west

# 2 of 10



ROYAL DISCOUNT FURNITURE

BENWLEY  
PLAZA



B. Lowenstein & Brothers Building

27 S. Main

Memphis, Shelby County, Tennessee

Photographer: David Schuermann

Date: October 1982

Negative: Bologna & Associates

Shrine Building

Memphis, Tennessee

South elevation, facing northeast

# 3 of 10



ROYAL

ROYAL  
CORNER

ROYAL  
FURNITURE CO.

ROYAL  
CORNER

ROYAL  
CORNER

B. Lowenstein & Brothers Building  
27 S. Main

Memphis, Shelby County, Tennessee

Photographer: David Schuermann

Date: October 1982

Negative: Bologna & Associates  
Shrine Building  
Memphis, Tennessee

West elevation, facing east

# 4 of 10





B. Lowenstein & Brothers Building

27 S. Main

Memphis, Shelby County, Tennessee

Photographer: David Schuermann

Date: October 1982

Negative: Bologna & Associates

Shrine Building.

Memphis, Tennessee

Northwest corner, facing southeast

# 5 of 10



B. Lowenstein & Brothers Building  
27 S. Main

Memphis, Shelby County, Tennessee

Photographer: David Schuermann

Date: October 1982

Negative: Bologna & Associates  
Shrine Building

Memphis, Tennessee

East elevation detail (second & third stories)  
facing west

# 6 of 10



B. Lowenstein & Brothers Building

27 S. Main

Memphis, Shelby County, Tennessee

Photographer: David Schuermann

Date: October 1982

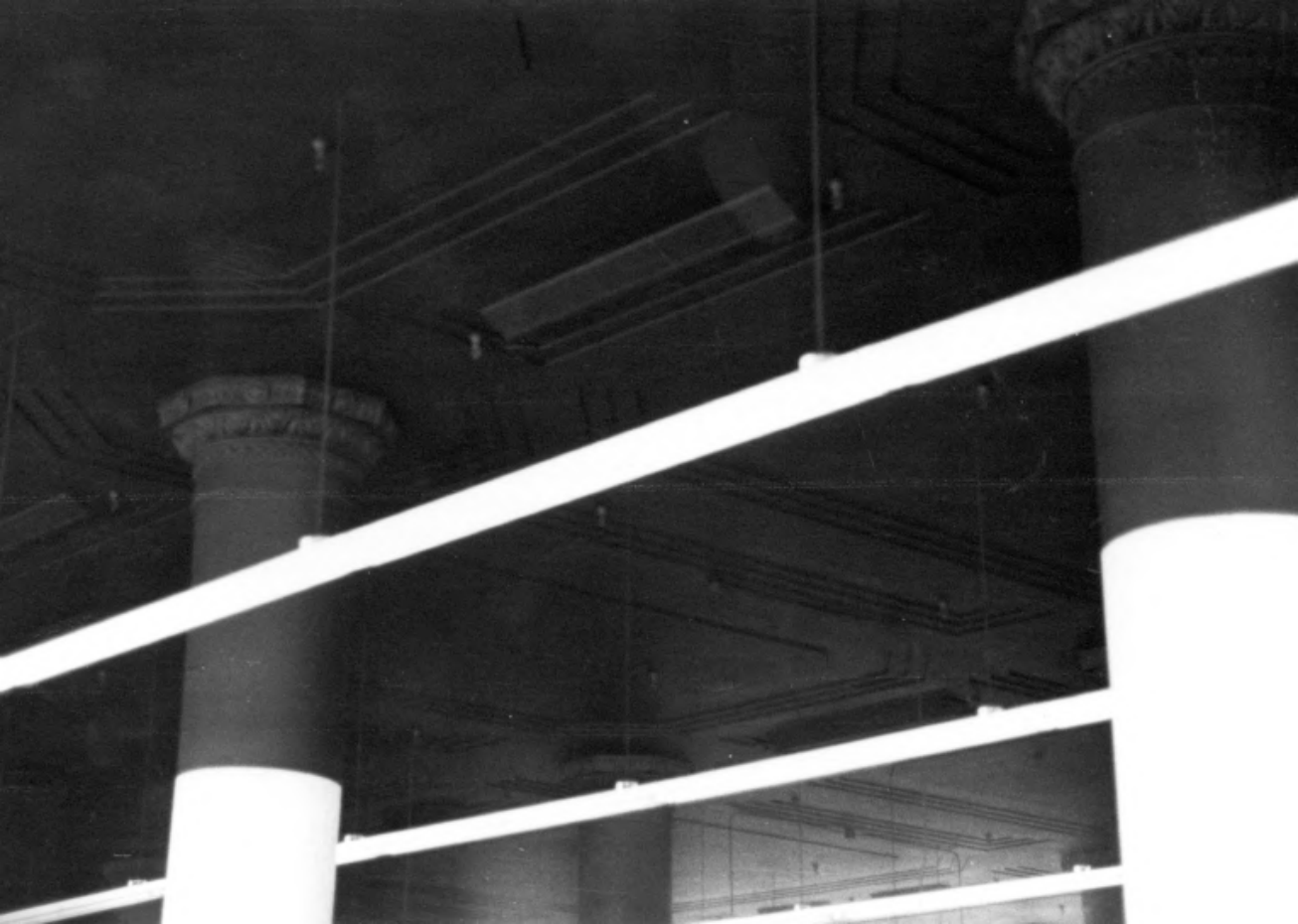
Negative: Bologna & Associates

Shrine Building

Memphis, Tennessee

Southeast corner detail (eighth & ninth  
stories), facing northwest

# 7 of 10



B. Lowenstein & Brothers Building

27 S. Main

Memphis, Shelby County, Tennessee

Photographer: David Schuermann

Date: October 1982

Negative: Bologna & Associates

Shrine Building

Memphis, Tennessee

First Floor interior, columns and coffered  
ceiling

# 8 of 10





B. Lowenstein & Brothers Building

27 S. Main

Memphis, Shelby County, Tennessee

Photographer: David Schuermann

Date: October 1982

Negative: Bologna & Associates

Shrine Building

Memphis, Tennessee

First floor interior, perimeter cornice

# 9 of 10



B. Lowenstein & Brothers Building  
27 S. Main

Memphis, Shelby County, Tennessee

Photographer: David Schuermann

Date: October 1982

Negative: Bologna & Associates  
Shrine Building

Memphis, Tennessee

Typical interior, second - ninth floors  
# 10 of 10