



DOE

NOV 29 1979

1. Grace United Methodist Church
2. St. Augustine, Florida, *St Johns County*
3. Edward D. Powell
4. March 1979
5. Florida Division of Archives, History and Records Management
6. South (entrance) facade, Church and educational building (former parsonage)
7. Photo #1913

OCT 3 1979

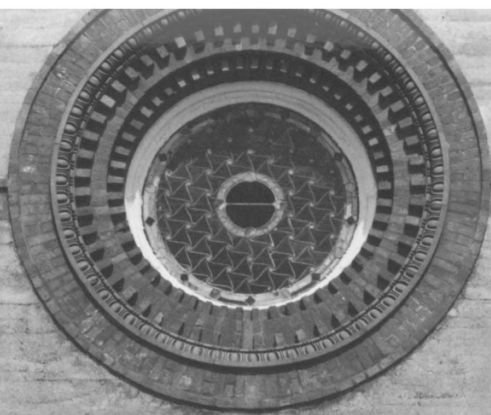


Grace Church  
UNITED  
METHODIST

DOE  
NOV 29 1979

1. Grace United Methodist Church
2. St. Augustine, Florida, *St. Johns County*
3. Edward D. Powell
4. March, 1979
5. Florida Division of Archives, History and Records Management
6. Southeast corner, Church
7. Photo #2 *9/13*

OCT 3 1979



**Brace Church**  
UNITED METHODIST

SUNDAY WORSHIP  
8:30 & 10:00 A.M.  
SUNDAY SCHOOL  
9:45 A.M.

CHURCH OPEN 9-5  
WORSHIP SERVICES 10:00  
CLOSURE 5:00 P.M.  
CLERGY & MUSIC PASTOR



NOV <sup>DC</sup> 29 1979

1. Grace United Methodist Church
2. St. Augustine, Florida, *St John County*
3. Edward D. Powell
4. March 1979
5. Florida Division of Archives, History and Records Management
6. South facade, entrance loggia, Church
7. Photo # 34/13

OCT 3 1979



DOE

NOV 29 1979

1. Grace United Methodist Church
2. St. Augustine, Florida, *St Johns County*
3. Edward D. Powell
4. March 1979
5. Florida Division of Archives, History and Records Management
6. East & north (rear) elevations, Church
7. Photo #4 *9/13*

OCT 3 1979

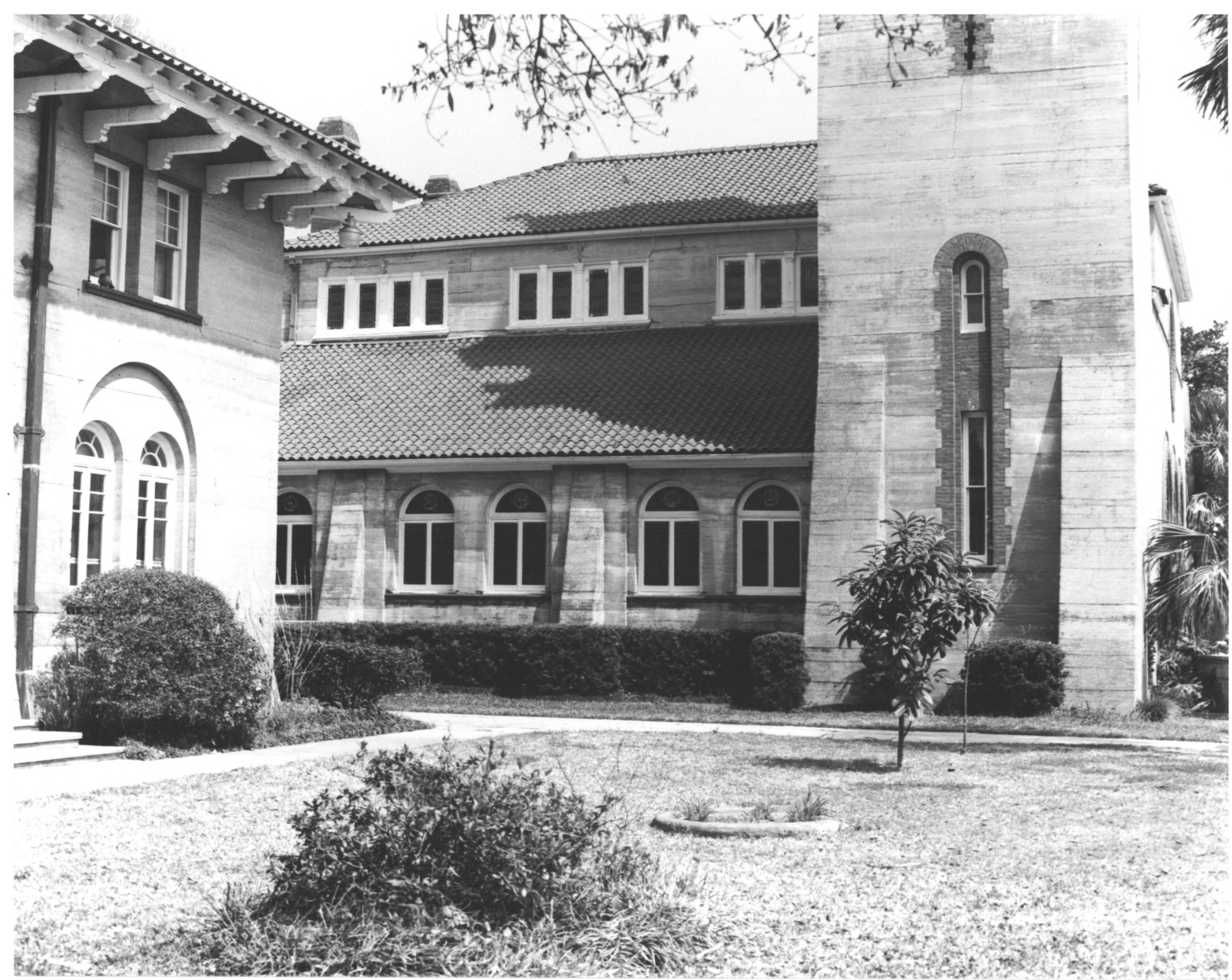




1. Grace United Methodist Church
2. St. Augustine, Florida, *St. John County*
3. Edward D. Powell
4. March 1979
5. Florida Division of Archives, History and Records Management
6. East (side) elevation, Church
7. Photo # *59/13*

*DOE*  
NOV 29 1979

OCT 3 1979



NOV 29<sup>POE</sup> 1979

1. Grace United Methodist Church
2. St. Augustine, Florida, *St John County*
3. Edward D. Powell
4. March 1979
5. Florida Division of Archives, History and Records Management
6. West (side) elevation with tower base, Church
7. Photo #6913

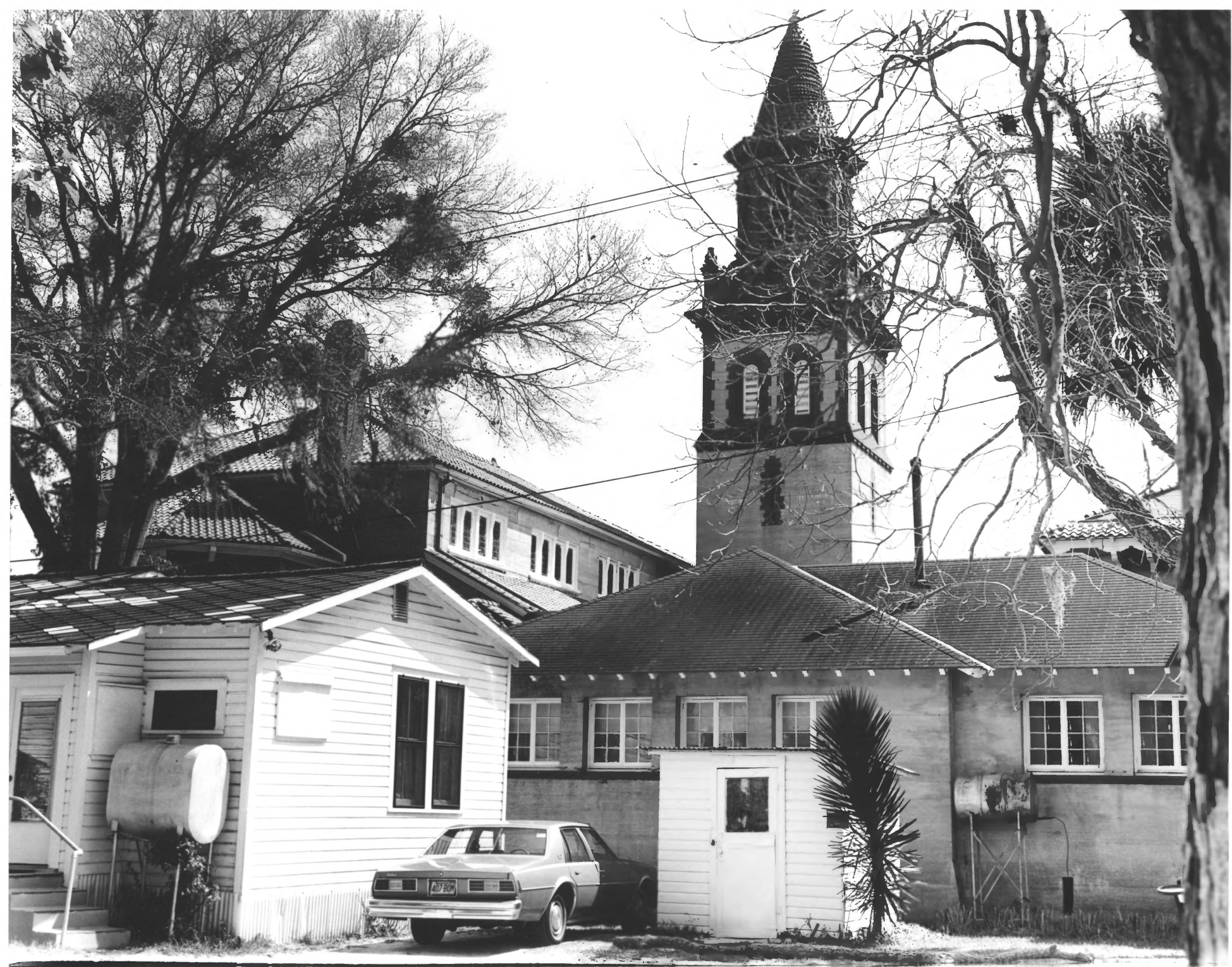
OCT 3 1979



*DOE*  
NOV 29 1979

1. Grace United Methodist Church
2. St. Augustine, Florida, *St John County*
3. Edward D. Powell
4. March 1979
5. Florida Division of Archives, History and Records Management
6. South (entrance) facade, Educational Building (former parsonage)
7. Photo # *70/13*

OCT 3 1979



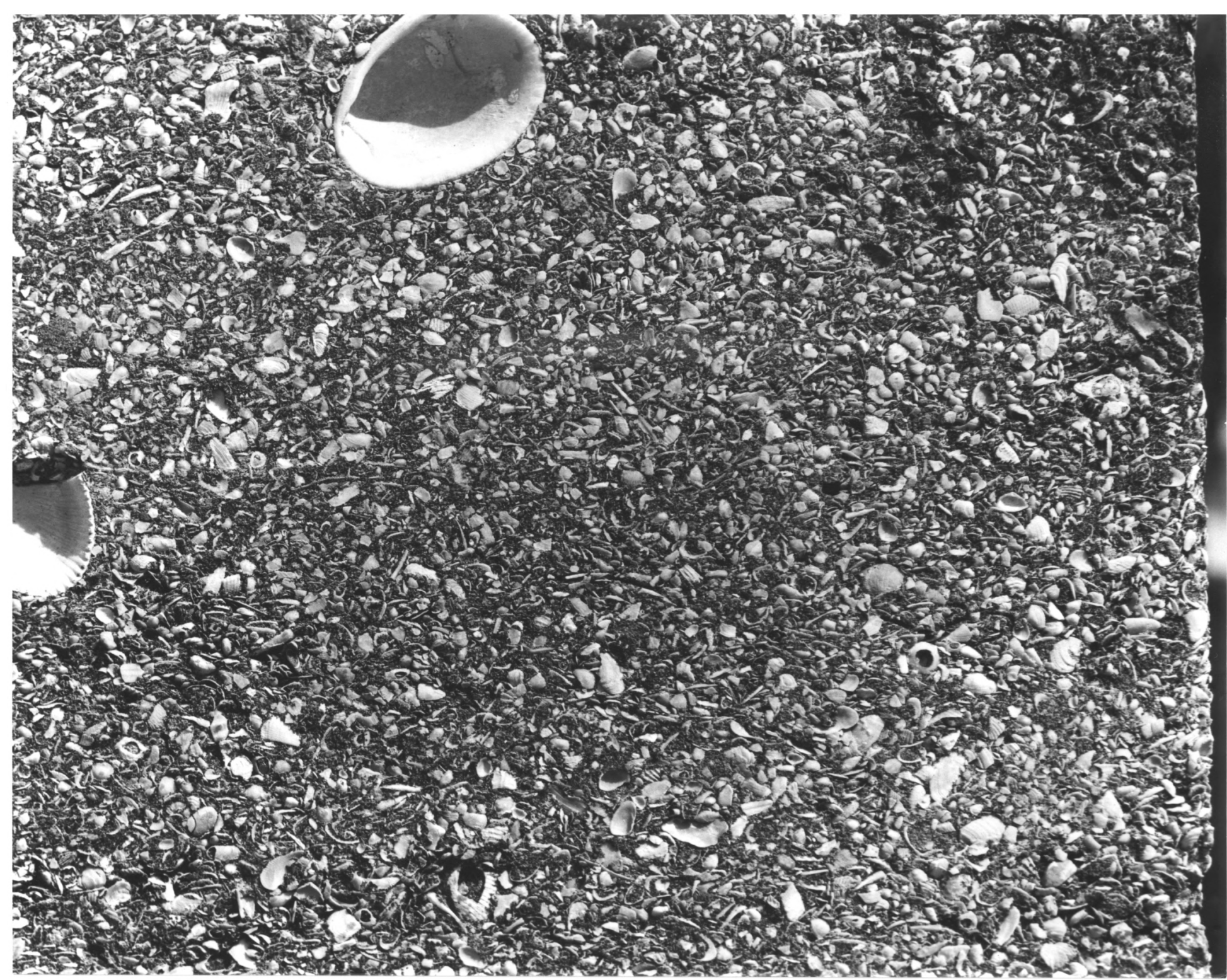
DOE

NOV 29 1979

1. Grace United Methodist Church
2. St. Augustine, Florida, *St. John County*
3. Edward D. Powell
4. March 1979
5. Florida Division of Archives, History and Records Management
6. North (rear) facade, original Educational Building
7. Photo #8 *9/13*

OCT 3 1979

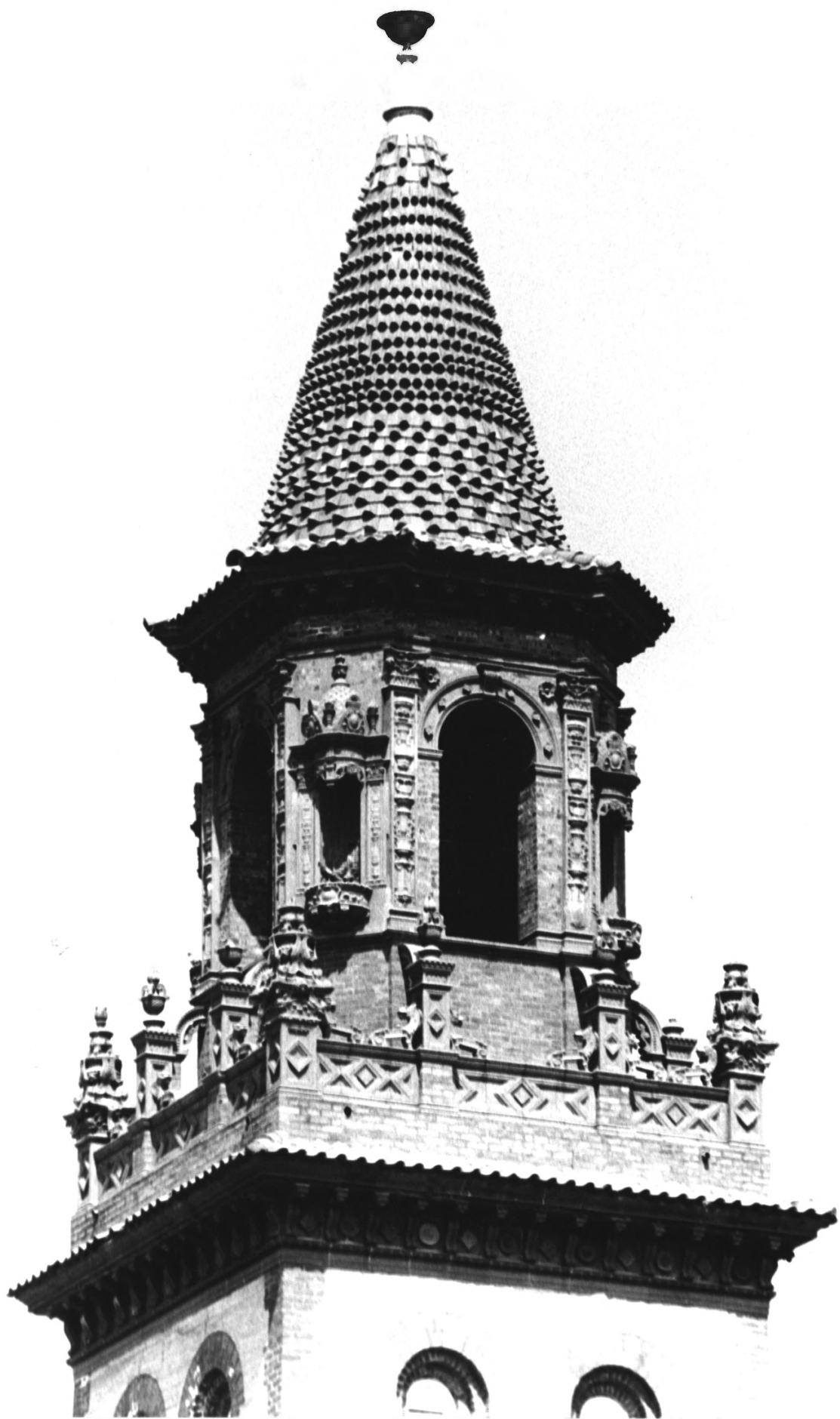




1. Grace United Methodist Church
2. St. Augustine, Florida, *St John County*
3. Edward D. Powell
4. March 1979
5. Florida Division of Archives, History and Records Management
6. Shell aggregate, wall surface
7. Photo #9 *13*

OCT 3 1979

*DOE*  
NOV 29 1979



DOE  
NOV 29 1979

1. Grace United Methodist Church
2. St. Augustine, Florida, *St John County*
3. Edward D. Powell
4. March 1979
5. Florida Division of Archives, History and  
Records Management
6. Tower belfry and steeple
7. Photo #10 *9/13*

OCT 8 1979



DOE  
NOV 29 1979

1. Grace United Methodist Church
2. St. Augustine, Florida, *St. John County*
3. Edward D. Powell
4. March 1979
5. Florida Division of Archives, History and Records Management
6. Tower belfry with parapet finials and niche
7. Photo #110/13

**OCT 3 1979**



1. Grace United Methodist Church
2. St. Augustine, Florida, *St. John County*
3. Edward D. Powell
4. March 1979
5. Florida Division of Archives, History and Records Management
6. Nave, looking north toward chancel
7. Photo #12 *9/13*

OCT 3 1979

*DOE*  
NOV 29 1979





DOE

NOV 29 1979

1. Grace United Methodist Church
2. St. Augustine, Florida, *St Johns County*
3. Edward D. Powell
4. March 1979
5. Florida Division of Archives, History and Records Management
6. Nave and side aisle, looking southwest
7. Photo #13 *13*

OCT 3 1979