



NAME: DORMITORY (BLDG. #796) - SPERRY
CHALETs

LOCATION: GLACIER NATIONAL PARK

PHOTOGRAPHER: LANCE WILLIAMS

DATE: JULY 1975

NEGATIVE: NATIONAL PARK SERVICE

ROCKY MOUNTAIN REGIONAL OFFICE

DESCRIPTION: MAIN ENTRANCE

PHOTO NUMBER: 195

Flathead County, Montana

AUG 2 1977

MAY 20 1977



NAME: DORMITORY (BLDG. #796) - SPERRY
CHALETs

LOCATION: GLACIER NATIONAL PARK

PHOTOGRAPHER: LANCE WILLIAMS

DATE: JULY 1975

NEGATIVE: NATIONAL PARK SERVICE

ROCKY MOUNTAIN REGIONAL OFFICE

DESCRIPTION: REAR

PHOTO NUMBER: 2075

*Flathead County
Montana*

MAY 20 1977

AUG 2 1977



NAME: DORMITORY (BLDG. #796) - SPERRY
CHALETS

LOCATION: GLACIER NATIONAL PARK

PHOTOGRAPHER: LANCE WILLIAMS

DATE: JULY 1975

NEGATIVE: NATIONAL PARK SERVICE

ROCKY MOUNTAIN REGIONAL OFFICE

DESCRIPTION: END VIEW

PHOTO NUMBER: 3

^{of 5}
MAY 20 1977

AUG 2 1977

Flathead County, Montana



NAME: KITCHEN/DINING ROOM (BLDG. #797)

→ SPERRY CHALETS

LOCATION: GLACIER NATIONAL PARK

PHOTOGRAPHER: LANCE WILLIAMS

DATE: JULY 1975

NEGATIVE: NATIONAL PARK SERVICE

ROCKY MOUNTAIN REGIONAL OFFICE

DESCRIPTION: ENTRANCE

PHOTO NUMBER: 4 ⁴⁵

Flathead County

MAY 20 1977

AUG 2 1977



NAME: KITCHEN/DINING ROOM (BLDG. #797)

SPERRY CHALETS

LOCATION: GLACIER NATIONAL PARK

PHOTOGRAPHER: LANCE WILLIAMS

DATE: JULY 1975

NEGATIVE: NATIONAL PARK SERVICE

ROCKY MOUNTAIN REGIONAL OFFICE

DESCRIPTION: END VIEW

PHOTO NUMBER: 5 of 5

Flathead County,

MAY 20 1977

AUG 2 1977



Sperry Chalet dormitory with Great
Northern Railway logo in gable end
Glacier National Park

NPS photo by Laura Soullière Harrison
7/85



Sperry Chalet dormitory, east elevation

Glacier National Park

NPS photo by Laura Soullière Harrison

7/85



Sperry Chalet dormitory with Great Northern
Railway logo in galbe end

Glacier National Park *W.A.H., N.T.*

NPS photo by Laura Soullière Harrison

7/85



Sperry Chalet dormitory, south and east
elevations

Glacier National Park

NPS photo by Laura Soullière Harrison
7/85



Sperry Chalet dormitory, south and east
elevations

Glacier National Park *MR, MT*

NPS photo by Laura Soullière Harrison

7.85



Dormitory, Sperry Chalet

Glacier National Park

NPS Photo by Laura Soullière Harrison

7/85



Sperry Chalet dormitory, east elevation

Glacier National Park *MAA, MT*

NPS photo by Laura Soullière Harrison

7/85



Sperry Chalet dormitory

Glacier National Park *MRA, MT*

NPS photo by Laura Soullière Harrison

7/85



Sperry Chalet dormitory, north and east
elevations

Glacier National Park *MRA, MT*

NPS photo by Laura Soullière Harrison

7/85



Trail, vicinity Sperry Chalet

Glacier National Park *MRJ, MT*

NPS Photo by Laura Soullière Harrison

7/85



Dining room/kitchen, Sperry Chalet

Glacier National Park

NPS photo by Laura Soullière Harrison

7/85



Bear-proofing over kitchen window,
Sperry Chalet dining room
Glacier National Park
NPS photo by Laura Soullière Harrison
7/85.



Porch and eave details, Sperry Chalet
dormitory

Glacier National Park *MNA, MT*

NPS photo by Laura Soullière Harrison

7/85



Eave detail, dormitory, Sperry Chalet
Glacier National Park

NPS photo by Laura Soullière Harrison

7/85



Kitchen and dining room, Sperry Chalet,
north and east elevations

Glacier National Park

NPS photo by Laura Soullière Harrison

7/85



Stairway to second floor, dormitory,
Sperry Chalet

Glacier National Park *GRA, MT*
NPS Photo by Laura Soullière Harrison

7/85



Dormitory room Sperry Chalet

Glacier National Park

NPS photo by Laura Soullière Harrison

7/85



Rustic railing, dormitory, Sperry
Chalet

Glacier National Park *MNA, MT*

NPS photo by Laura Soullière Harrison

7/85



Dining room, Sperry Chalet
Glacier National Park *MRA, MT*
NPS photo by Laura Soullière Harrison
7/85

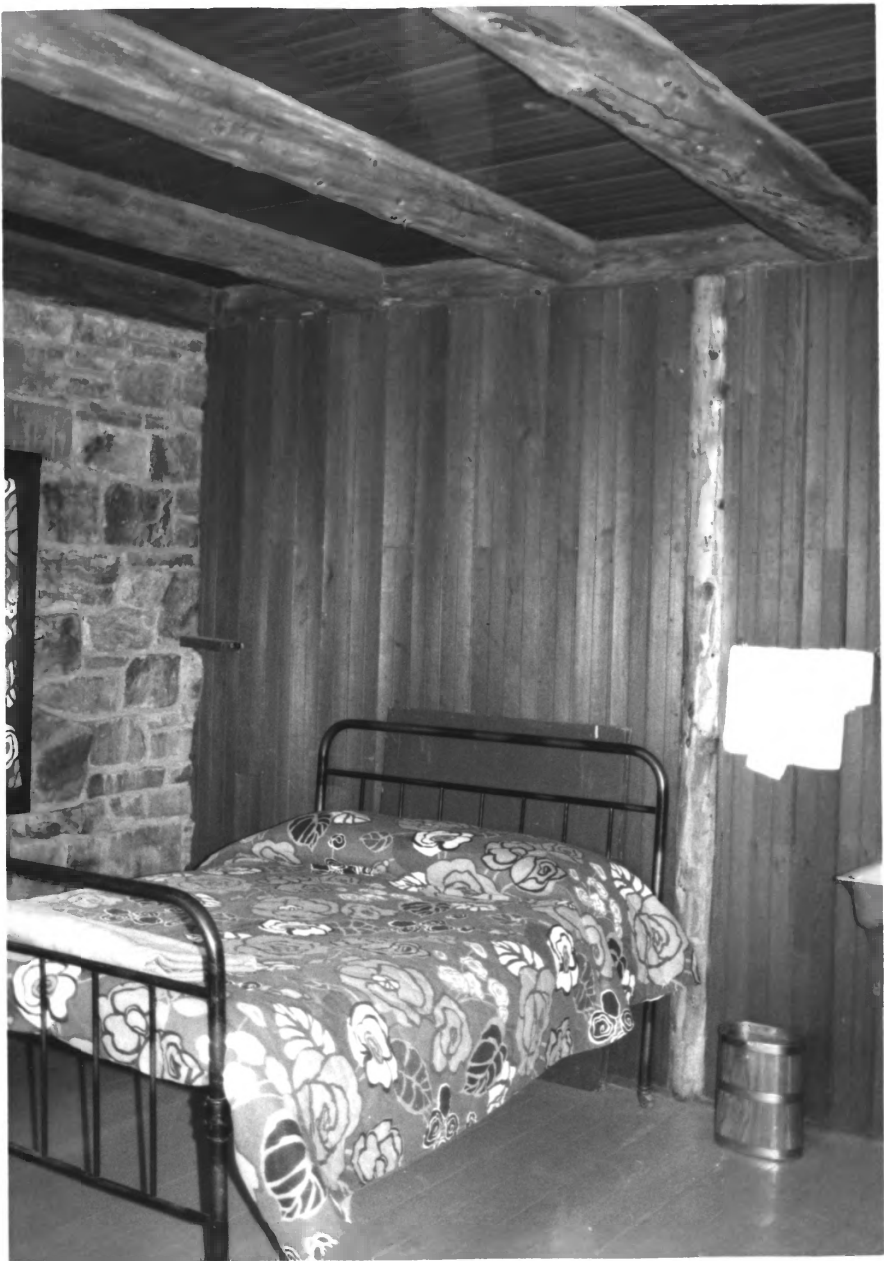


Dining room, Sperry Chalet

Glacier National Park

NPS photo by Laura Soullière Harrison

7/85



Dormitory room, Sperry Chalet

Glacier National Park *Mt. St. Helens*

NPS photo by Laura Soullière Harrison

7/85



Lunch 12c
Dinner 60c

Keep boots, pass and
Clothing off of Floors
in hotel and off
rocks outside
The animals are
trained to
chew!

42

Original light fixture, Sperry Chalet
dormitory

Glacier National Park

MNA, mt

NPS photo by Laura Soullière Harrison

7/85