

SG-807

United States Department of the Interior
National Park Service

National Register of Historic Places Registration Form



This form is for use in nominating or requesting determinations for individual properties and districts. See instructions in National Register Bulletin, *How to Complete the National Register of Historic Places Registration Form*. If any item does not apply to the property being documented, enter "N/A" for "not applicable." For functions, architectural classification, materials, and areas of significance, enter only categories and subcategories from the instructions.

1. Name of Property

Historic name: North Monmouth Library
Other names/site number: _____
Name of related multiple property listing: Maine Public Libraries
(Enter "N/A" if property is not part of a multiple property listing)

2. Location

Street & number: 132 North Main Street
City or town: Monmouth State: Maine County: Kennebec
Not For Publication: n/a Vicinity: n/a

3. State/Federal Agency Certification

As the designated authority under the National Historic Preservation Act, as amended, I hereby certify that this nomination _____ request for determination of eligibility meets the documentation standards for registering properties in the National Register of Historic Places and meets the procedural and professional requirements set forth in 36 CFR Part 60.

In my opinion, the property meets _____ does not meet the National Register Criteria. I recommend that this property be considered significant at the following level(s) of significance:

_____ national _____ statewide local

Applicable National Register Criteria:

A _____ B C _____ D

<u>Krista A. Mohney</u>	<u>2/10/2017</u>
Signature of certifying official/Title:	Date
MAINE HISTORIC PRESERVATION COMMISSION	
State or Federal agency/bureau or Tribal Government	

In my opinion, the property ___ meets ___ does not meet the National Register criteria.	
Signature of commenting official:	Date
Title	State or Federal agency/bureau or Tribal Government

NORTH MONMOUTH LIBRARY

Name of Property

KENNEBEC COUNTY, MAINE

County and State

4. National Park Service Certification

I hereby certify that this property is:

- entered in the National Register
- determined eligible for the National Register
- determined not eligible for the National Register
- removed from the National Register
- other (explain:)

For Edson H. Beall
Signature of the Keeper

3.27.17
Date of Action

5. Classification

Ownership of Property

(Check as many boxes as apply.)

- Private
- Public – Local
- Public – State
- Public – Federal

Category of Property

(Check only one box.)

- Building(s)
- District
- Site
- Structure
- Object

NORTH MONMOUTH LIBRARY
Name of Property

KENNEBEC COUNTY, MAINE
County and State

Number of Resources within Property
(Do not include previously listed resources in the count)

Contributing	Noncontributing	
<u>1</u>	<u>0</u>	buildings
<u>0</u>	<u>0</u>	sites
<u>0</u>	<u>0</u>	structures
<u>0</u>	<u>0</u>	objects
<u>1</u>	<u>0</u>	Total

Number of contributing resources previously listed in the National Register 0

6. Function or Use

Historic Functions

(Enter categories from instructions.)

EDUCATION/library

Current Functions

(Enter categories from instructions.)

EDUCATION/library

RECREATION AND CULTURE/museum

NORTH MONMOUTH LIBRARY

Name of Property

KENNEBEC COUNTY, MAINE

County and State

7. Description

Architectural Classification

(Enter categories from instructions.)

LATE 19TH AND 20TH CENTURY REVIVALS/Colonial Revival

Materials: (enter categories from instructions.)

Principal exterior materials of the property:

foundation: CONCRETE

walls: WOOD - clapboard

roof: ASPHALT

other: BRICK

Narrative Description

(Describe the historic and current physical appearance and condition of the property. Describe contributing and noncontributing resources if applicable. Begin with a **summary paragraph** that briefly describes the general characteristics of the property, such as its location, type, style, method of construction, setting, size, and significant features. Indicate whether the property has historic integrity.)

Summary Paragraph

The North Monmouth Library faces southwest on a small corner lot in the hamlet of North Monmouth. This area within the Town of Monmouth sits in the rural forested lake region of Kennebec County, Maine. The settlement around the library consists of residential housing to the north, a mill pond to the south, a mill to east, and a 19th century community church to the west. The sixteen feet by twenty-four feet Colonial Revival building has a one story balloon frame on a poured concrete foundation. The south façade has a gable front roof with a small pedimented portico over the center entry. The entry is flanked by Palladian windows with the multi-light upper sashes over single-light lower sashes. Windows on the remaining three elevations are double-hung wood with the same sash configuration. The sidewalls are clapboarded with simple corner pilasters and a restrained cornice transitioning to the low

NORTH MONMOUTH LIBRARY

Name of Property

KENNEBEC COUNTY, MAINE

County and State

slope, asphalt shingle roof. The simply finished single room interior and the exterior retain a high degree of all seven aspects of integrity.

Narrative Description

The building sits on a level, forty-two feet by seventy-two feet lot on the corner of North Main Street and New Street. The building faces south-southwest but will be identified as southern facing. Directly across North Main Street to the south is the Wilson Stream Reservoir which supplied waterpower for the Winthrop Mills Company mill to the southeast. The mill building is still in use under the name Textech. The library is predominately surrounded by single family homes with some duplexes and single family homes converted to apartments. A short asphalt walk extends from the sidewalk to the front steps. A six inch retaining wall extends east from the walk to the edge of the property. The wall increases to eighteen inches high in front of the neighboring lot. The library lot is grass covered with low evergreen bushes on either side of the entry steps and a lilac near the center of the west elevation.

The south façade of the building has a three bay closed gable front with a center portico that is also pedimented. The building is framed by a wood watertable, simple corner pilasters with minimal capitals and a simple molded cornice. The side wall and tympanum are covered in clapboards. The battered concrete foundation is two feet high and transitions into poured concrete steps and plinths at the center entry. Boarded up basement window openings exist on either side of the entry and are centered under the first floor windows. The steps have a formed decorative nosing, and the sidewall plinths have inset panels formed into the concrete on the south and outside faces. Each plinth supports a slender Tuscan column which in turn supports the entablature of the pedimented portico. The portico cornice ties in to that of the main wall. The wood double-doors have three panels below and one above the eight-light sash in a sunburst pattern. The sunburst pattern is eight equal triangles radiating from the center. The doors are cased in simple flat stock. The Palladian window on either side of the door has upper sash in a similar sunburst pattern with the separate fan light above the center. The larger center sash has a group of four eight-light sunbursts to create a thirty-two light sash. The narrower upper sash on either side of the center is two sunbursts stacked for a sixteen light sash. The window trim on all windows is flat stock with a brick mold type trim at the outer edge.

The east elevation reveals the same concrete foundation, wood watertable, simple corner pilasters, clapboard siding and simple cornice. There are two double-hung wood windows placed symmetrically in the space. These and all windows on the minor elevations are thirty-two over one with the upper sash in a sunburst pattern. The windows have wood sills and the same flat stock trim with a brick mold around the outer edge. Two boarded window openings at the basement level are directly under the first floor windows. An exterior fuel oil tank sits at the north corner of the wall. The low slope of the roof reveals the asphalt shingle roofing.

NORTH MONMOUTH LIBRARY

Name of Property

KENNEBEC COUNTY, MAINE

County and State

The north elevation is a simple clapboard covered gable wall with cornice returns and raking eaves. An exterior, single-flue, brick chimney is centered in the wall and projects above the roof peak about sixteen inches. A double-hung wood window as described on the east elevation is centered on either side of the chimney. A boarded window opening at the basement level is under the east window. A bulkhead entrance to the basement is centered under the west window. The sloped entry doors rest on concrete sidewalls.

The west elevation is a mirror image of the east elevation with no oil tank.

The interior is a single sixteen feet by twenty-four feet room with shelving lining the walls. The floor is tongue and groove oak. The smooth finished plaster walls are painted. The ceiling is tin with tin cove molding at the transition from wall to ceiling. Electricity was installed at the time of construction. Five matching schoolhouse type fixtures light the room. There is one central fixture with the other four symmetrically placed toward the corners. The double entry doors are pine with a honey oak colored natural finish. The interior door and window trim is all flat one-by-four inch stock finished in the same light color. The interior trim at the Palladian windows has a wood key at the peak of the fanlight trim as added decoration. The interior side of all window sash are painted white.

The south wall has the door centered with plain fixed shelving added on either side of the door to the edge of the Palladian window trim. The seven inch deep shelving extends from the floor to the window head casing. Below the Palladian windows and to the side walls are built-in bookshelves up to the window sill level. The sixteen inch deep shelf has a top finished with a decorative edge as a display counter. The bottom shelf is built three inches off the floor. On the west wall, shelving extends from the south corner to the north corner where it abuts a built-in enclosed storage cupboard. The original shelving below the windowsill level on the west wall is the same height and general design as the south but only twelve inches deep. From the southwest corner to the window and between west windows, later shelving was added. Matching that flanking the door, the shelves are seven inches deep and rise to the height of the window head casing.

The built-in cupboard at the north fills the space from the corner to the edge of the window. The cupboard is built of beaded, tongue and groove pine boards with a crown molding trim at the top. The natural finish cupboard stops two feet from the ceiling with open storage above. The lower flush door is larger than the upper door, but both open against the north wall. The utilitarian surface mounted hinges and catches provide little decoration.

The east wall is a mirror image of the west wall. The north wall has a floor to window head casing height bookshelf in the space between the two windows. The top has the same edge detail and base as the original shelves that wrap the other three walls below the windowsill level. The north wall has a flue cover centered east to west at a height just above the window head casings. The stove and pipe are no longer present, but a ghost mark on the wood floor shows the stove was centered east to west and approximately five feet from the north wall. The later shelves between the windows and door on the other

NORTH MONMOUTH LIBRARY

Name of Property

KENNEBEC COUNTY, MAINE

County and State

three walls are simpler but match the original shelves in material and workmanship. One original oak library table and two small moveable bookshelves remain in the library.

NORTH MONMOUTH LIBRARY

Name of Property

KENNEBEC COUNTY, MAINE

County and State

8. Statement of Significance

Applicable National Register Criteria

(Mark "x" in one or more boxes for the criteria qualifying the property for National Register listing.)

- A. Property is associated with events that have made a significant contribution to the broad patterns of our history.
- B. Property is associated with the lives of persons significant in our past.
- C. Property embodies the distinctive characteristics of a type, period, or method of construction or represents the work of a master, or possesses high artistic values, or represents a significant and distinguishable entity whose components lack individual distinction.
- D. Property has yielded, or is likely to yield, information important in prehistory or history.

Criteria Considerations

(Mark "x" in all the boxes that apply.)

- A. Owned by a religious institution or used for religious purposes
- B. Removed from its original location
- C. A birthplace or grave
- D. A cemetery
- E. A reconstructed building, object, or structure
- F. A commemorative property
- G. Less than 50 years old or achieving significance within the past 50 years

NORTH MONMOUTH LIBRARY

Name of Property

KENNEBEC COUNTY, MAINE

County and State

Areas of Significance (Enter categories from instructions.)

ARCHITECTURE

EDUCATION

SOCIAL HISTORY

Period of Significance

1927-1967

Significant Dates

1927

Significant Person (Complete only if Criterion B is marked above.)

n/a

Cultural Affiliation

n/a

Architect/Builder

Harry H. Cochrane (1860-1946), architect

NORTH MONMOUTH LIBRARY

Name of Property

KENNEBEC COUNTY, MAINE

County and State

Statement of Significance Summary Paragraph

(Provide a summary paragraph that includes level of significance, applicable criteria, justification for the period of significance, and any applicable criteria considerations.) (Refer to photographs)

The North Monmouth Library is a one room Colonial Revival style building in the hamlet of North Monmouth in the Kennebec County town of Monmouth. Local architect Harry Cochrane of Monmouth designed the building in 1926 with construction complete in 1927. The building sits on a small corner lot donated by the Winthrop Mill Company. The predominately residential settlement retains manufacturing in the mill which sits south of the library with its associated mill pond. Local monetary, material and labor donations provided for the library building construction. The North Monmouth Library meets the registration requirements outlined in the Multiple Property Submission "Maine Public Libraries: ca. 1750 – 1938" which provides the historic context for evaluating the property. The building is eligible for listing in the National Register under Criteria A for its association with education in the town of Monmouth and for its connection to the nationwide social history trend of philanthropic support for library creation in the 20th century. The property is also eligible under Criteria C as a significant small Colonial Revival style design by Harry Cochrane. The library retains its Palladian windows, portico, interior finishes and design. The building retains a high degree of integrity of materials, workmanship, design, setting, location, association and feeling. The library is significant at the local level with a period of significance from 1927 to 1967, the year of construction to fifty years from the present.

Narrative Statement of Significance (Provide at least one paragraph for each area of significance.)

Education and Social History

North Monmouth Library is significant under Criterion A as the building housing the educational North Monmouth Public Library Association from its construction in 1927 until 2016. Most Maine libraries were built during the late nineteenth and early twentieth century. The drive to create public libraries was associated with the larger national reform movements and trends toward social betterment. The creation of the North Monmouth Library closely follows the general pattern of library establishment in Maine during this period. As discussed in the Multiple Property Documentation, the driving force behind public library creation was typically educational in nature and the funding method was usually a significant local philanthropic donation. North Monmouth Library follows this pattern closely.

The earliest library in North Monmouth was a collection of books available to the public and housed on a shelf in one of the stores. By 1900 the residents of North Monmouth had access to the Cumston Library in Cumston Hall in Monmouth three miles south. Library books from the Cumston Library were loaned to the North Monmouth schools for many years. In 1923 a more

NORTH MONMOUTH LIBRARY

Name of Property

KENNEBEC COUNTY, MAINE

County and State

permanent branch library was set up with fixed hours in Union Chapel with Mrs. Nellie Ambrose as librarian.¹ Union Chapel is approximately a block west of the present library building. By March 7, 1924, the North Monmouth Library Association had formed and started keeping formal minutes of their meetings.² The Lady Managers of Cumston Library allowed transport of books between Cumston Library and the Union Chapel in North Monmouth, but it appears this borrowing arrangement was not a satisfactory solution. At some point, the North Monmouth Association decided North Monmouth needed its own building and book collection. The organization appointed a building committee in May 1926 to carry out construction plans created by Harry H. Cochrane of Monmouth.³ Cochrane was not a trained architect but a competent self-taught designer, artist, and interior decorator who also designed the much larger and more elaborate Cumston Hall.

The building lot was donated by Winthrop Mills Incorporated which owned the Annabessacook Mill across the street. The mill also made a significant five hundred dollar donation to the building fund. Additional funds were raised through local subscription and fundraising events. Construction labor was also donated as were books. Additional book were purchased allowing the new building to be stocked with its own collection eliminating the need to borrow from the Cumston Library. At some point the association was advised to form a corporation to hold the building and administer the library.⁴ The North Monmouth Library Association, Inc. was incorporated on May 31, 1927 with all women officers and trustees. With the building complete and the shelves stocked, the association librarian took control of the building which maintained regular year-round hours. The library operated until 2016 when ownership was transferred to the Monmouth Museum. The museum will continue to operate the library as the organization's research library and exhibit space.

Architecture

The North Monmouth Library is a small one room building but a well-executed Colonial Revival design is achieved within the limited space. The building is an excellent example of the Colonial Revival style in a hamlet with predominately Greek Revival and vernacular houses. The library blends well with the other styles and is the most elaborate and intact design among the nearby buildings. The design created by Harry Cochrane shows a trained eye able to handle proportion and balance with ease. He has incorporated many characteristic Colonial Revival features such as Palladian windows, pedimented gable front, corner pilasters, entry portico with slender columns and overall symmetry without over embellishing the small façade. The upper sash of each window is in a sunburst pattern which is a relatively common Colonial Revival detail. This design appears to be a favored motif of Harry Cochrane when working in the Colonial Revival style. His Monmouth Center Elementary School has similar windows, and his façade design for the Monmouth Academy features a porch railing in a sunburst pattern.

Harry H. Cochrane was a multi-talented local designer who was not formally trained as an architect. He attended Monmouth Academy, the New York Art School and the Chicago Art

¹ "Dedication Exercises for No. Monmouth New Library," *Lewiston Evening Journal*, July 19, 1927.

² North Monmouth Library Association Meeting Minutes. North Monmouth Library Association.

³ "Dedication Exercises for No. Monmouth New Library."

⁴ North Monmouth Library Association Meeting Minutes.

NORTH MONMOUTH LIBRARY

Name of Property

KENNEBEC COUNTY, MAINE

County and State

Institute. After work in New York and Boston as a photographer, designer, portrait painter, and decorator, he returned to Monmouth, married and focused on interior decoration and mural painting. He studied architecture on his own and gained practical experience through many renovations required as part of his interior designs. He was best known as an interior decorator and mural painter. His list of interior decoration projects numbers in the hundreds, but he is known to have designed at least ten buildings. He designed a number of buildings in Monmouth five of which are extant and intact.⁵ This is his only design in North Monmouth. The library is his simplest but possible most refined design. The restrained composition and difference in style is striking compared to the National Register listed Cumston Hall⁶ in Monmouth Center. The much larger Romanesque Revival building was constructed as town hall, library and opera house. Cumston Hall is very busy and varied in its decoration and composition particularly when contrasted with the simple lines and restrained details of the North Monmouth Library. Cochrane's design skill is displayed in the widely different styles, scopes and sizes of the projects.

The interior of the library is striking in its simplicity. The simple tin ceiling, painted plaster walls, and simple flat trim and shelving place the focus on the books themselves. Harry Cochrane specified the color for the plaster walls, but no other decoration was provided. The one room interior does not conform to the standard library plan of the time. While the typical three room division with a central desk/delivery room and a reading room and stacks on either side was not feasible in the small space, the space was divided by the heating stove and appears was intended to be divided spatially by design. The *Lewiston Evening Journal* article of July 16, 1927 states: "There is a reading room and provisions for children."⁷ Within the open single room, the central stove and librarian's desk mark the central area. On either side of the stove was a library table which provided the reading room area within the space while the stacks lined the exterior walls. The simple plan seems to show an understanding of then current library design and an attempt to at least reflect the prevailing idea within the limited space. Actually creating the prevailing tri-part space with walls would have created a less usable and effective design. Creating a larger space was not practical for the community at the time, and it appears size and design were well suited to the community as there has been no addition and little alteration over time.

Developmental history/additional historic context information (If appropriate.)

9. Major Bibliographical References

Bibliography (Cite the books, articles, and other sources used in preparing this form.)

⁵ Marius Peladeau, "Harry H. Cochrane," in *Biographical Dictionary of Architects in Maine* edited by Earle G. Shettleworth, Jr. (Augusta, ME: Maine Historic Preservation Commission, 1988).

⁶ NR # 73000130.

⁷ "Dedication Exercises for No. Monmouth New Library."

NORTH MONMOUTH LIBRARY

Name of Property

KENNEBEC COUNTY, MAINE

County and State

Deeds, Book 641, page 540. Book 657, page 114. Kennebec County Registry of Deeds.

Lewiston Evening Journal. "Dedication Exercises for No. Monmouth New Library." (Lewiston, ME), July 19, 1927.

Mohney, Kirk F. *Beautiful In All Its Details*. (Portland, Maine: Maine Preservation), 1997.

Mohney, Kirk F. *Maine Public Libraries, National Register of Historic Places Multiple Property Documentation Form*. Maine Historic Preservation Commission, 1988.

North Monmouth Library Association. Papers. North Monmouth Library Association.

Peladeau, Marius. "Harry H. Cochrane," in *Biographical Dictionary of Architects in Maine* edited by Earle G. Shettleworth, Jr. Augusta, ME: Maine Historic Preservation Commission, 1988.

Town of Monmouth Reports. 1902 -1995. Held at the Maine State Library.

Wengren, Mary-Eliza. *Cumston Hall, National Register of Historic Places Registration Form*. Maine Historic Preservation Commission, 1973.

Previous documentation on file (NPS):

- preliminary determination of individual listing (36 CFR 67) has been requested
- previously listed in the National Register
- previously determined eligible by the National Register
- designated a National Historic Landmark
- recorded by Historic American Buildings Survey # _____
- recorded by Historic American Engineering Record # _____
- recorded by Historic American Landscape Survey # _____

Primary location of additional data:

- State Historic Preservation Office
- Other State agency
- Federal agency
- Local government
- University
- Other

Name of repository: _____

Historic Resources Survey Number (if assigned): 285-0042

10. Geographical Data

NORTH MONMOUTH LIBRARY

Name of Property

KENNEBEC COUNTY, MAINE

County and State

Acreage of Property less than one acre

Use either the UTM system or latitude/longitude coordinates

Latitude/Longitude Coordinates

Datum if other than WGS84:

(enter coordinates to 6 decimal places)

- | | |
|--------------|------------|
| 1. Latitude: | Longitude: |
| 2. Latitude: | Longitude: |
| 3. Latitude: | Longitude: |
| 4. Latitude: | Longitude: |

Or

UTM References

Datum (indicated on USGS map):

- NAD 1927 or NAD 1983

- | | | |
|-------------|-----------------|-------------------|
| 1. Zone: 19 | Easting: 417984 | Northing: 4903014 |
| 2. Zone: | Easting: | Northing: |
| 3. Zone: | Easting: | Northing: |
| 4. Zone: | Easting: | Northing: |

Verbal Boundary Description (Describe the boundaries of the property.)

The nominated property is designated on the Town of Monmouth tax map 52 lot 62.

Boundary Justification (Explain why the boundaries were selected.)

The described boundaries represent the extent of the town lot historically and currently associated with the nominated building.

NORTH MONMOUTH LIBRARY

Name of Property

KENNEBEC COUNTY, MAINE

County and State

11. Form Prepared By

name/title: Michael Goebel-Bain / Architectural Historian
organization: Maine Historic Preservation Commission
street & number: 55 Capitol Street, 65 State House Station
city or town: Augusta state: Maine zip code: 04333
e-mail: michael.w.goebel-bain@maine.gov
telephone: 207 287-5435
date: December 8, 2017

Additional Documentation

Submit the following items with the completed form:

- **Maps:** A **USGS map** or equivalent (7.5 or 15 minute series) indicating the property's location.
- **Sketch map** for historic districts and properties having large acreage or numerous resources. Key all photographs to this map.
- **Additional items:** (Check with the SHPO, TPO, or FPO for any additional items.)

Photographs

Submit clear and descriptive photographs. The size of each image must be 1600x1200 pixels (minimum), 3000x2000 preferred, at 300 ppi (pixels per inch) or larger. Key all photographs to the sketch map. Each photograph must be numbered and that number must correspond to the photograph number on the photo log. For simplicity, the name of the photographer, photo date, etc. may be listed once on the photograph log and doesn't need to be labeled on every photograph.

NORTH MONMOUTH LIBRARY

Name of Property

KENNEBEC COUNTY, MAINE

County and State

Photo Log

Name of Property: North Monmouth Library

City or Vicinity: Monmouth

County: Kennebec State: Maine

Photographer: Michael Goebel-Bain

Date Photographed: December 8, 2016

Description of Photograph(s) and number, include description of view indicating direction of camera:

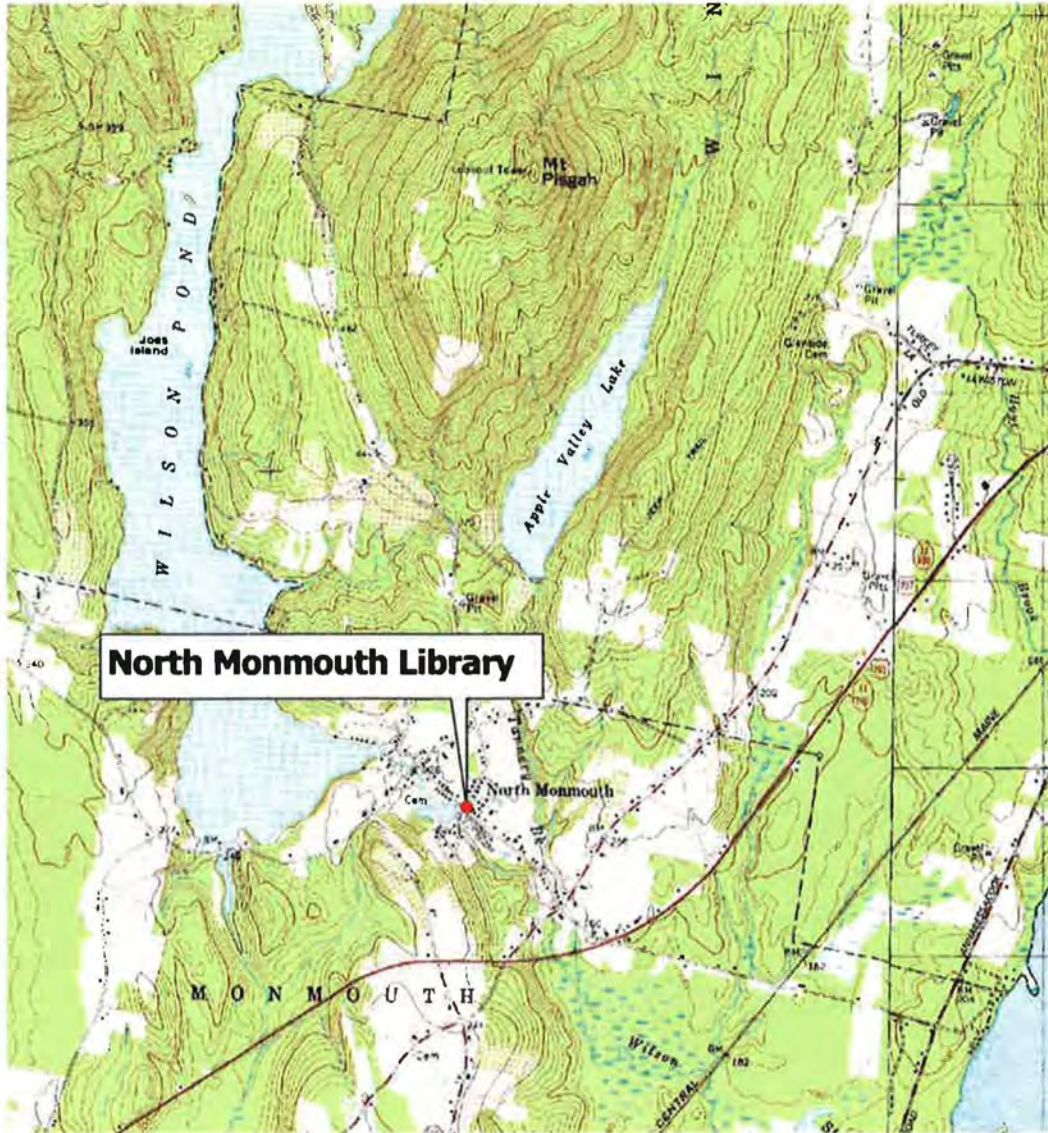
- 1 of 6 ME_KENNEBEC COUNTY_NORTH MONMOUTH LIBRARY_0001.TIF
View looking northeast.
- 2 of 6 ME_KENNEBEC COUNTY_NORTH MONMOUTH LIBRARY_0002.TIF
View looking northwest.
- 3 of 6 ME_KENNEBEC COUNTY_NORTH MONMOUTH LIBRARY_0003.TIF
View looking north at façade.
- 4 of 6 ME_KENNEBEC COUNTY_NORTH MONMOUTH LIBRARY_0004.TIF
View looking southeast.
- 5 of 6 ME_KENNEBEC COUNTY_NORTH MONMOUTH LIBRARY_0005.TIF
Interior view looking southeast.
- 6 of 6 ME_KENNEBEC COUNTY_NORTH MONMOUTH LIBRARY_0006.TIF
Interior view looking west.

Paperwork Reduction Act Statement: This information is being collected for applications to the National Register of Historic Places to nominate properties for listing or determine eligibility for listing, to list properties, and to amend existing listings. Response to this request is required to obtain a benefit in accordance with the National Historic Preservation Act, as amended (16 U.S.C.460 et seq.).

Estimated Burden Statement: Public reporting burden for this form is estimated to average 100 hours per response including time for reviewing instructions, gathering and maintaining data, and completing and reviewing the form. Direct comments regarding this burden estimate or any aspect of this form to the Office of Planning and Performance Management, U.S. Dept. of the Interior, 1849 C. Street, NW, Washington, DC.

NORTH MONMOUTH LIBRARY
Name of Property

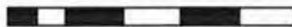
KENNEBEC COUNTY, MAINE
County and State



North Monmouth Library

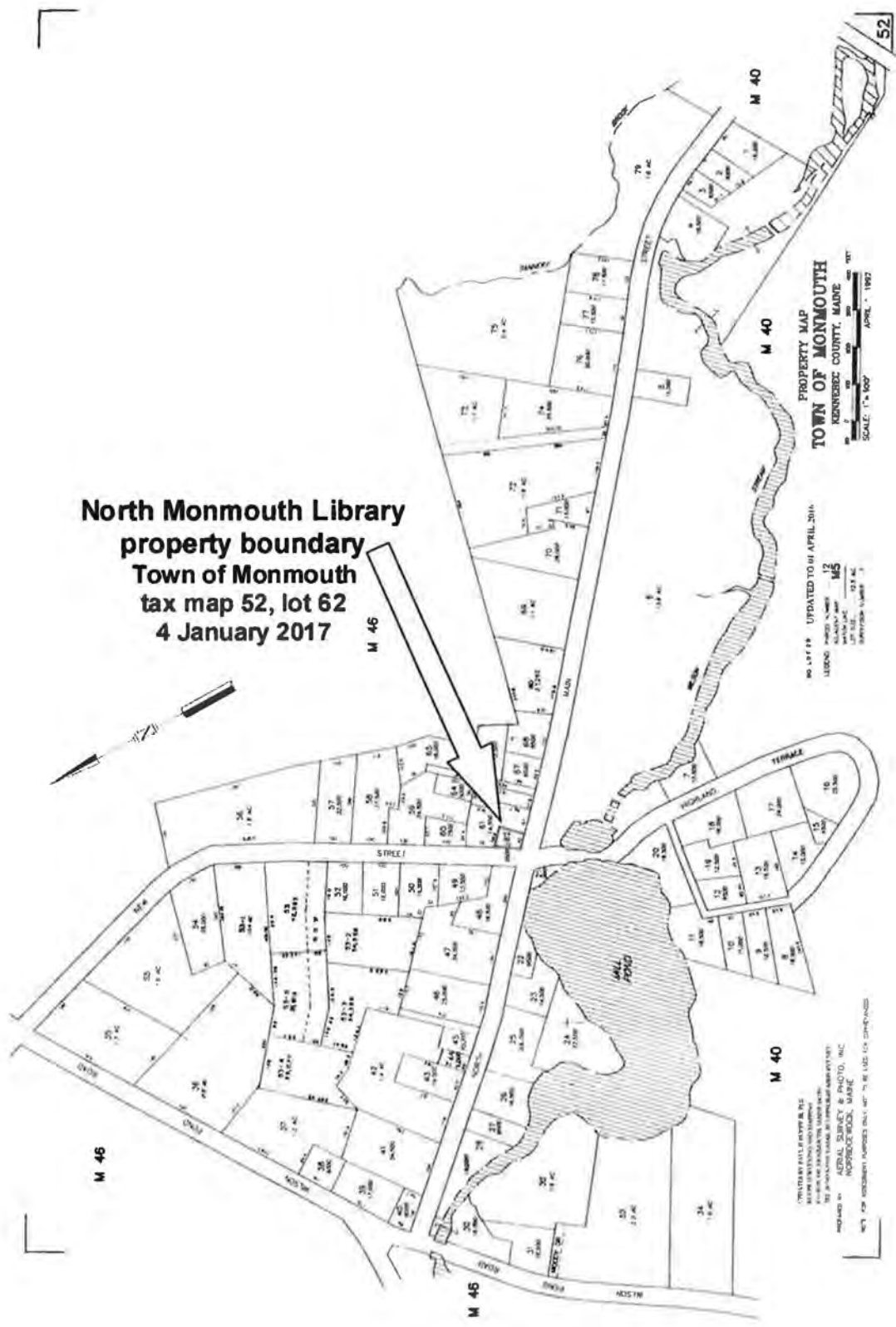
**NORTH MONMOUTH LIBRARY
KENNEBEC COUNTY, MAINE
4 JANUARY 2017
UTMs NAD 83 19/ 417984 / 4903014**

1000 0 1000 2000 3000 4000 ft



NORTH MONMOUTH LIBRARY
Name of Property

KENNEBEC COUNTY, MAINE
County and State









SPEED
LIMIT
25







UNITED STATES DEPARTMENT OF THE INTERIOR
NATIONAL PARK SERVICE

NATIONAL REGISTER OF HISTORIC PLACES
EVALUATION/RETURN SHEET

Requested Action:

Property Name:

Multiple Name:

State & County:

Date Received: Date of Pending List: Date of 16th Day: Date of 45th Day: Date of Weekly List:

Reference number:

Nominator:

Reason For Review:

Accept Return Reject Date

Abstract/Summary Comments:

Recommendation/ Criteria

Reviewer Edson Beall Discipline Historian

Telephone _____ Date _____

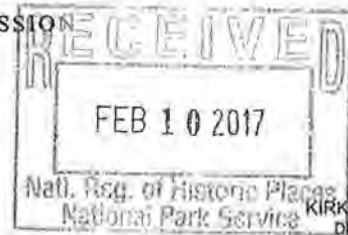
DOCUMENTATION: see attached comments : No see attached SLR : No

If a nomination is returned to the nomination authority, the nomination is no longer under consideration by the National Park Service.



PAUL R. LEPAGE
GOVERNOR

MAINE HISTORIC PRESERVATION COMMISSION
55 CAPITOL STREET
65 STATE HOUSE STATION
AUGUSTA, MAINE
04333



10 February 2017

J. Paul Loether, Deputy
Keeper of the National Register
National Park Service 2280
National Register of Historic Places
1201 "I" (Eye) Street, NW, 8th Fl.
Washington D.C. 20005

Dear Mr. Loether:

Enclosed please find four (4) new National Register nominations for properties in the State of Maine:

North Monmouth Library, Kennebec County
Rumford Commercial Historic District, Oxford County
Canadian Pacific Railway Depot, Greenville Junction, Maine, Piscataquis County
St. Joseph's Academy and Convent, Cumberland County

Regarding the Rumford Commercial Historic District, Oxford County, Maine, I have included copies of five timely objection letters. These five full or part owners represent less than fifty percent of the total 36 owners within the district. Four of the objecting owners are one-fifth owners of the same property. I have also included a copy of the email response by Daniel Delahaye, FPO, regarding comments on the USPS owned Rumford Post Office included within the district.

If you have any questions relating to these nominations, please do not hesitate to contact me at (207) 287-2132 x 8.

Sincerely,

Michael Goebel-Bain
Architectural Historian

Enc.