



MARY D. HILL
SCHOOL

NO
ANY
TIME
NO

ONE
WAY
←

Central Colored School (*Mary D. Hill*
Louisville *School*)
Jefferson County
Kentucky

Joe Watzek, January 1976
Louisville Historic Landmarks and
Preservation Districts Commission

Photo 2. View from northwest.
6th Street is at right; Kentucky at
left.

SEP 13 1976

JUN 28 1976



MARY D. HILL
SCHOOL

NO PARKING
ANY TIME

ONE WAY
←

WAL

Central Colored School (*Mary D. Hill
School*)
Louisville
Jefferson County
Kentucky

Paul D. Jones, January 1976
4012 Massie Avenue, Louisville

Photo 3. Looking southeast.

SEP 13 1976

JUN 28 1976



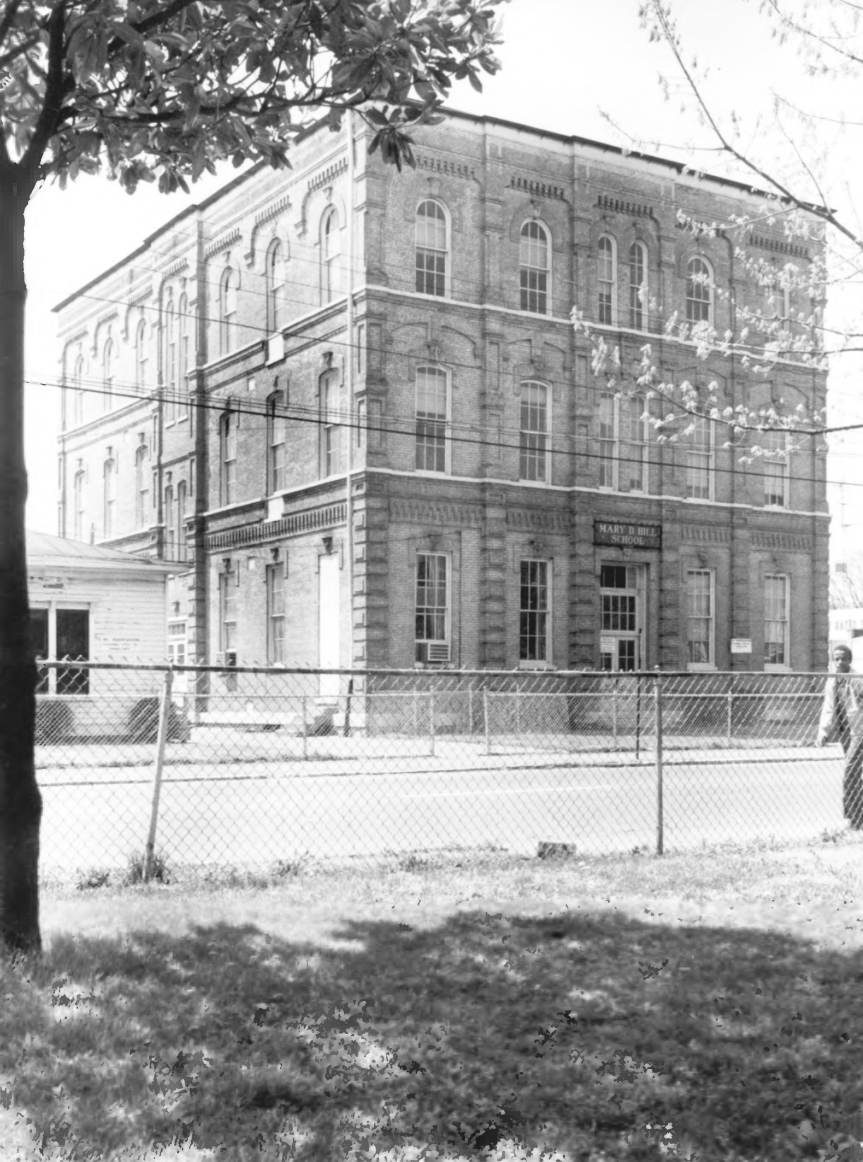
Central Colored School (*Mary D. Hill
School*)
Louisville
Jefferson County
Kentucky

Paul D. Jones, January 1976
4012 Massie Avenue, Louisville

Photo 4. North facade.

SEP 13 1976

JUN 28 1976



MARY B. HILL
SCHOOL

Central Colored School (*Mary D. Hill*
Louisville *School*)
Jefferson County
Kentucky

Douglas L. Stern, July 1975
2111 Eastern Parkway, Apt. 3
Louisville

Photo 5. Looking southwest.

JUN 28 1976

SEP 13 1976