

TENNESSEE MULTIPLE PROPERTY FORM

RECEIVED

Title: Historic Resources of Williamson County

MAR 03 1988

Historic Name: Gray, Henry P., House (WM-1004)

Common Name: Gray, Henry P., House

NATIONAL REGISTER

Classification: Building

Owner: Dr. Fred Ryden, 2088 Old Hillsboro Road, Franklin, TN

Location: On Old Hillsboro Road at junction of Boyd Mill Road.

Contributing:

Non-Contributing:

Buildings 1
Structures 0
Sites 0

Buildings 0
Structures 3
Sites 0

Leaves 1000

Total: 1

Total: 3

Description:

The Henry P. Gray House is a two-story frame central passage plan ante-bellum residence with Greek Revival detailing. On the main (east) facade is a two-story pedimented portico with four square Doric motif columns. The portico has a second story balcony and both railings have square balusters. The main entrance has original frame double doors with large single rectangular panels. The entrance has two light sidelights with frame lower panels and a four light transom. Flanking the door are Doric pilasters.

The house has weatherboard siding, brick chimneys and a stone foundation. Windows are original six-over-six sash. On the second story of the central bay is an original double door, sidelights and transom which matches the main entrance below. At the rear of the house is an original two-story ell which has been substantially rebuilt with new weatherboard, doors and windows. The interior retains its original central hall plan and original detailing. These details include Greek Revival influenced mantles in the main rooms, chair rails, and a staircase with a simple newel post and square balusters. Interior photographs were not allowed.

At the rear of the house are three non-contributing outbuildings built in the early 20th century. These include: a ca. 1920 board and batten shed or tenant house with a gable roof; a ca. 1940 garage; and a ca. 1940 gable roof shed with vertical board siding. The house sits on a rural lot and is part of a large farm facing Old Hillsboro Road.

Period of Significance: ca. 1845

Area of Significance: Architecture

Criterion: C

Architect/Builder: Unknown

Statement of Significance:

The Henry P. Gray House is a notable example of a frame central passage plan ante-bellum residence with Greek Revival detailing. The house is one of twelve similarly designed frame residences constructed prior to 1860 which are included in the nomination. The house has not been significantly altered on its main facade and retains original interior detailing.

The house was constructed by Henry P. Gray who purchased the property with his family in 1843. The Gray family lived here during the 19th century and operated a 200 acre farm. In 1869, the house was sold to Charles H. Gray who lived in the house until the late 19th century. Around 1900, Charles Gray operated a store adjacent to the residence. This store still remains although badly deteriorated. The house was sold by the Gray family in the early 20th century and the house has had several owners in recent years.

The Henry P. Gray House is a good example of the Greek Revival influenced central plan residences of the mid-19th century. It features a two story portico, original Greek Revival influenced door and interior details. Changes and alterations to the residence have been confined to the rear ell and no major changes have occurred to the main facade and significant interior details. The house sits on a rural lot and farm and retains its site and setting.

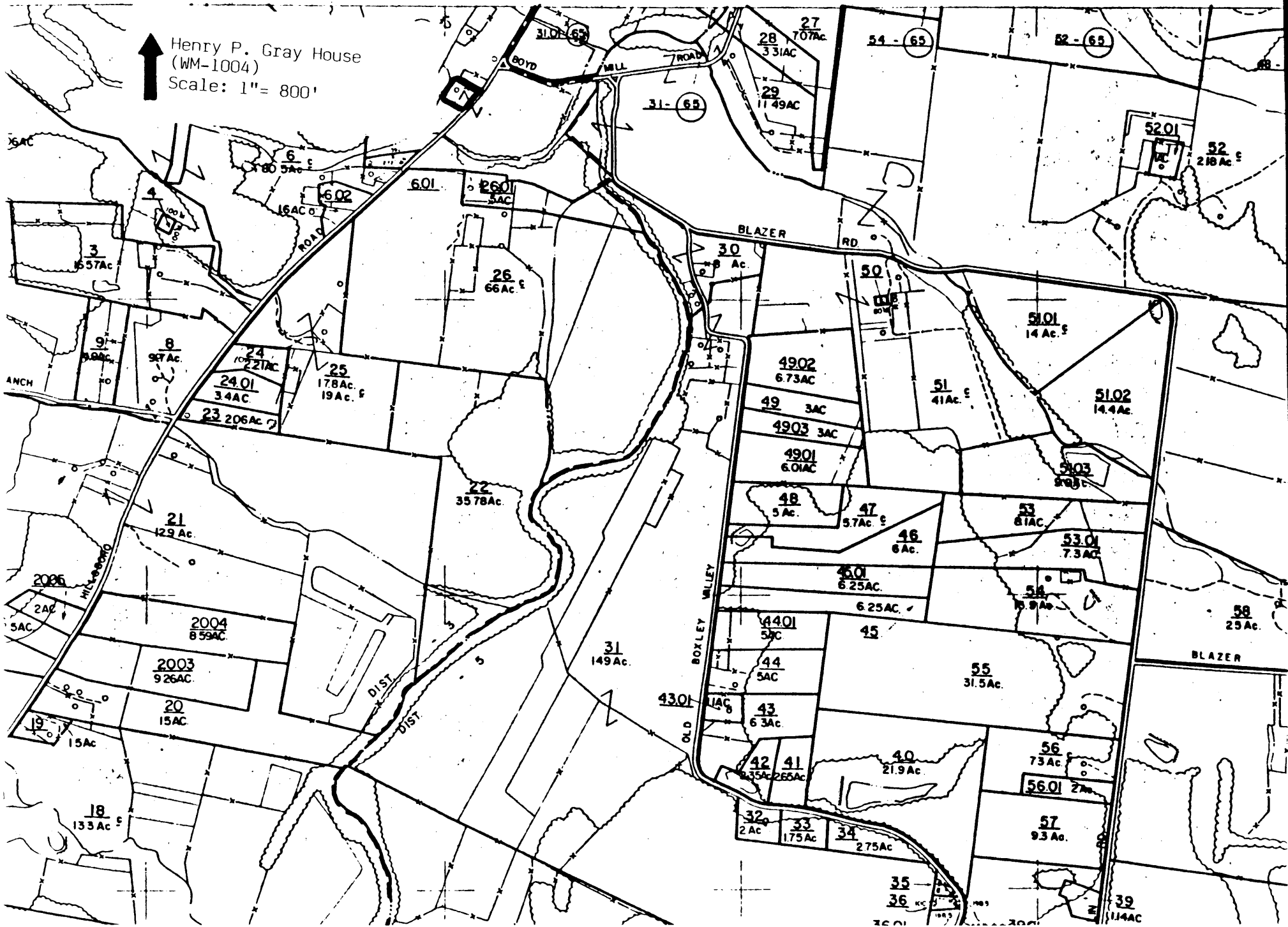
Acreage: 1 acre

UTM References: Leipers Fork Quad/16/502480/3975420

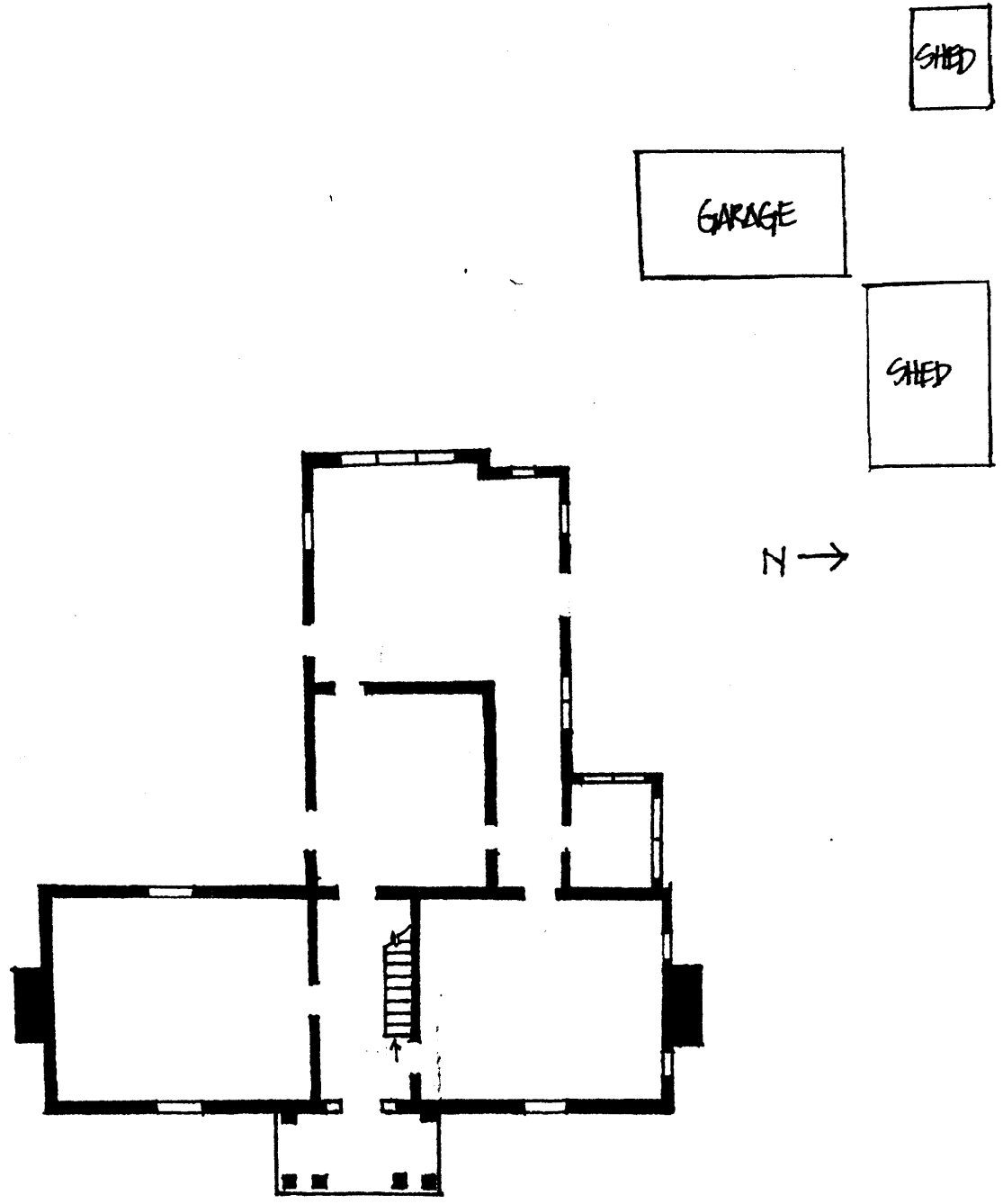
Verbal Boundary Description and Justification: The boundary for the Henry P. Gray House is illustrated on accompanying Williamson County tax map # 65, lot 30. The boundary is drawn to include the house and adjacent outbuildings and exclude modern farm buildings to the west and north. The boundary is defined on the north, west and south by fences and on the east by Old Hillsboro Road. The boundary includes sufficient property to protect the historical setting of the site.

Supplemental Bibliographical References:

Henry P. Gray House
(WM-1004)
Scale: 1" = 800'



* 1004 HENRY P. GRAY HOUSE



Not to Scale

TO
OLD NATCHEZ TRACE
↓