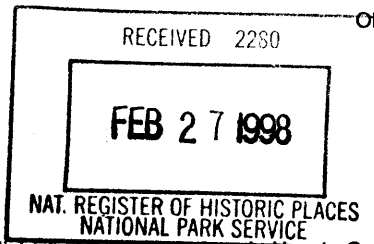


United States Department of the Interior
National Park Service

NATIONAL REGISTER OF HISTORIC PLACES
REGISTRATION FORM



263

This form is for use in nominating or requesting determinations for individual properties and districts. See instructions in How to Complete the National Register of Historic Places Registration Form (National Register Bulletin 16A). Complete each item by marking "x" in the appropriate box or by entering the information requested. If any item does not apply to the property being documented, enter "N/A" for "not applicable." For functions, architectural classification, materials, and areas of significance, enter only categories and subcategories from the instructions. Place additional entries and narrative items on continuation sheets (NPS Form 10-900a). Use a typewriter, word processor, or computer, to complete all items.

1. Name of Property

historic name DR. CHANDLER HOLMES SMITH HOUSE

other names/site number _____

2. Location

street & number 302 North Range Street

N/A not for publication

city or town Madison

N/A vicinity

state FLORIDA code FL county Madison code 079 zip code 32303

3. State/Federal Agency Certification

As the designated authority under the National Historic Preservation Act, as amended, I hereby certify that this nomination request for determination of eligibility meets the documentation standards for registering properties in the National Register of Historic Places and meets the procedural and professional requirements set forth in 36 CFR Part 60. In my opinion, the property meets does not meet the National Register criteria. I recommend that this property be considered significant nationally statewide locally. (See continuation sheet for additional comments.)

[Signature] 2/13/98
Signature of certifying official/Title Date

Florida State Historic Preservation Officer, Division of Historical Resources
State or Federal agency and bureau

In my opinion, the property meets does not meet the National Register criteria. (See continuation sheet for additional comments.)

Signature of certifying official/Title Date

State or Federal agency and bureau

4. National Park Service Certification

I hereby certify that the property is:

- entered in the National Register See continuation sheet
- determined eligible for the National Register See continuation sheet.
- determined not eligible for the National Register See continuation sheet.
- removed from the National Register.
- other, (explain) _____

[Signature] 3/26/98
Signature of the Keeper Date of Action
Edson H. Beall

Dr. Chandler Holmes Smith House
Name of Property

Madison Co., FL
County and State

5. Classification

Ownership of Property

(Check as many boxes as apply)

- private
- public-local
- public-State
- public-Federal

Category of Property

(Check only one box)

- buildings
- district
- site
- structure
- object

Number of Resources within Property

(Do not include any previously listed resources in the count)

Contributing	Noncontributing	
1	2	buildings
0	0	sites
0	0	structures
0	0	objects
1	2	total

Name of related multiple property listings

(Enter "N/A" if property is not part of a multiple property listing.)

N/A

Number of contributing resources previously listed in the National Register

0

6. Function or Use

Historic Functions

(Enter categories from instructions)

DOMESTIC: single dwelling

Current Functions

(Enter categories from instructions)

DOMESTIC: single dwelling

7. Description

Architectural Classification

(Enter categories from instructions)

Queen Anne

Materials

(Enter categories from instructions)

foundation BRICK
walls WOOD
roof ASPHALT
other _____

Narrative Description

(Describe the historic and current condition of the property on one or more continuation sheets.)

8. Statement of Significance

Applicable National Register Criteria

(Mark "x" in one or more boxes for the criteria qualifying the property for National Register listing.)

- A** Property is associated with events that have made a significant contribution to the broad patterns of our history.
- B** Property is associated with the lives of persons significant in our past.
- C** Property embodies the distinctive characteristics of a type, period, or method of construction or represents the work of a master, or possesses high artistic values, or represents a significant and distinguishable entity whose components lack individual distinction.
- D** Property has yielded, or is likely to yield information important in prehistory or history.

Criteria Considerations

(Mark "x" in all the boxes that apply.)

Property is:

- A** owned by a religious institution or used for religious purposes.
- B** removed from its original location.
- C** a birthplace or grave.
- D** a cemetery.
- E** a reconstructed building, object, or structure.
- F** a commemorative property.
- G** less than 50 years of age or achieved significance within the past 50 years

Narrative Statement of Significance

(Explain the significance of the property on one or more continuation sheets.)

9. Major Bibliographical References

Bibliography

Cite the books, articles, and other sources used in preparing this form on one or more continuation sheets.)

Previous documentation on file (NPS):

- preliminary determination of individual listing (36 CFR 36) has been requested
 - previously listed in the National Register
 - previously determined eligible by the National Register
 - designated a National Historic Landmark
 - recorded by Historic American Buildings Survey
- # _____

Areas of Significance

(Enter categories from instructions)

ARCHITECTURE

Period of Significance

1896

Significant Dates

1896

Significant Person

N/A

Cultural Affiliation

N/A

Architect/Builder

unknown/Davis, William Turner

Primary location of additional data:

- State Historic Preservation Office
- Other State Agency
- Federal agency
- Local government
- University
- Other

Name of Repository

Dr. Chandler Holmes Smith House
Name of Property

Madison Co., FL
County and State

10. Geographical Data

Acreage of Property less than one

UTM References

(Place additional references on a continuation sheet.)

1	1 7	2 6 8 3 2 0	3 3 7 3 2 0 0
	Zone	Easting	Northing
2			

3			
	Zone	Easting	Northing
4			

See continuation sheet

Verbal Boundary Description

(Describe the boundaries of the property on a continuation sheet.)

Boundary Justification

(Explain why the boundaries were selected on a continuation sheet.)

11. Form Prepared By

name/title Simeon Smith/Robert O. Jones, Historic Sites Specialist

organization Bureau of Historic Preservation date _____

street & number R.A. Gray Building, 500 S. Bronough Street telephone (850) 487-2333

city or town Tallahassee state Florida zip code 32399-0250

Additional Documentation

Submit the following items with the completed form:

Continuation Sheets

Maps

A **USGS map** (7.5 or 15 minute series) indicating the property's location.

A **Sketch map** for historic districts and properties having large acreage or numerous resources.

Photographs

Representative **black and white photographs** of the property.

Additional items

(check with the SHPO or FPO for any additional items)

Property Owner

(Complete this item at the request of SHPO or FPO.)

name Simeon A. Smith

street & number 1932 Queenswood Drive telephone 850-562-1451

city or town Tallahassee state FL zip code 32303

United States Department of the Interior
National Park ServiceNational Register of Historic Places
Continuation SheetSection number 7 Page 1DR. CHANDLER HOLMES SMITH HOUSE,
MADISON, MADISON COUNTY, FLORIDA**SUMMARY**

The Dr. Chandler Holmes Smith House is located at 302 North Range Street, Madison, Madison County, Florida. The two-and-one-half-story, 1896 residence is an excellent example of Queen Anne style architecture which was at its height of popularity at that time. The residence has an irregular footprint with a brick pier foundation. The exterior walls are horizontal wood siding, and the complex hipped roof has cross gables. There are two internal, and one external corbeled brick chimney. Some dominant features include an asymmetrical facade with a projecting gable, a one-story verandah which wraps three elevations, a tower with octagonal roof, and bay windows. Two non-contributing buildings are located on the property.

SETTING

The Smith House is on the southwest corner of Block 8, of the Original Town of Madison, Florida (Photo #1). The neighborhood is residential with a small hospital one block to the east, and the commercial, east/west thoroughfare, Highway 90/Base Street, two blocks to the south. The city center, courthouse square, is immediately south of Highway 90. When the house was built all of the surrounding streets were dirt and there were no other structures located on this block exception for the carriage house that was built with the house. There are several palm, dogwood, oak, pecan, and magnolia trees spread throughout the property, as well as azaleas, camellias, hydrangeas and crape myrtles. A flower garden was located on the southeast corner of the property. A circular dirt driveway lined in bricks and sago palms led from Range Street to the front steps. In 1924, Range Street was paved and concrete sidewalks were put in place on the west and south sides of the block.

United States Department of the Interior
National Park ServiceNational Register of Historic Places
Continuation SheetSection number 7 Page 2DR. CHANDLER HOLMES SMITH HOUSE,
MADISON, MADISON COUNTY, FLORIDADESCRIPTION
EXTERIOR

The house has an irregular footprint, brick pier foundation with brick lattice infill, a hipped roof with three cross-gables, two exterior and one interior brick chimney. The exterior horizontal wooden siding is 1"x6" pine with an ogee edge. Windows are filled with 2/2, double-hung wooden sashes.

The west, main facade has a front facing gabled roof with a pediment, and a one-story verandah with hipped roof supported by turned posts (Photos #2&3). A pediment with half-timbering extends from the porch roof, over the main steps accessing the porch and main door (Photo #4). A polygonal tower located on the south corner creates an asymmetrical facade (Photo #5). The tower has an octagonal, pointed roof with metal finial. The verandah has a spindle baluster hand railing, scroll-sawn brackets on the turned posts, and square fretwork under the porch eaves. The verandah wraps onto the south and north elevations; the wrap on the south corner stops at the eastern edge of the polygonal tower. Directly south of the main steps the porch curves (Photo #6). The entrance door has a paneled wooden bottom with a glass pane in the upper portion of the door. A transom with sidelights surround the entrance door, and subdivided into diamond lights. The entrance door has a paneled wooden bottom with a glass pane in the upper portion of the door. Two-over-two double-hung sash windows are at both stories; those on the second story have wooden shutters. Within the eaves are sculpted brackets, and a circular ventilator is located in the center. The porch is screened on the north corner, and an extended gable portion with its extended first story bay window is visible on the south.

The south elevation displays a smaller front facing gabled roof with pediment (Photo #7). This pedimented wing has a first-story bay with three windows on three sides, and a small hipped roof. Two windows with shutters are on the second story. The polygonal tower and wrap around porch are located on the west corner of the elevation. Located on the east are a pair of windows on the first story and a small fixed window at the second

United States Department of the Interior
National Park ServiceNational Register of Historic Places
Continuation SheetSection number 7 Page 3DR. CHANDLER HOLMES SMITH HOUSE,
MADISON, MADISON COUNTY, FLORIDA

story. Visible to the east is the kitchen extension with hipped roof. It has a portico porch entrance with eight concrete steps. The eaves contain sculpted brackets, and a circular ventilator is located in the center of the pediment. A brick chimney with corbeled top pierces the main roof between the cross gable and the main hipped roof.

The east elevation shows the complexity of the roof forms and the irregularity of the house plan (Photos #8&9). A one-story kitchen extension with a hipped roof protrudes east of the main block of the house. Three 6/6, double-hung sashes are grouped in the extension's eastern wall. A gable roof portico with exposed rafters covers an entrance door on the south side of the one-story extension. A shorter, hipped roof extension with brick chimney is on the north side of the kitchen extension. On the south end of the main portion of the house is one window on the first story. There are two windows on the second story; one is a single-light fixed window and the other is an eight-light casement window. The elevation at the center of the main house is recessed and contains paired windows; a balcony and single window are on the second story. A single window is in the elevation above the kitchen extension. On the north is a one-story gable extension with three windows.

The north elevation, like the south elevation, displays a small front facing gable extension with pediment. A one-story bay extends from the first story extension, with three windows and a hipped roof. A pair of windows is on the second story, mirroring the south elevation's gable extension. An exterior brick corbled chimney is located immediately to the west of the pediment. A one-story extension with a gable roof is on the north corner of the elevation and contains two canted corner windows with a brick exterior chimney in the center. On the north corner is a one-story screened in porch with four steps leading to a screened door onto the porch (Photo #10). A pair of French doors off the porch lead into the house. Within the eaves are sculpted brackets, and a circular ventilator is in the center of the pediment.

United States Department of the Interior
National Park ServiceNational Register of Historic Places
Continuation SheetSection number 7 Page 4DR. CHANDLER HOLMES SMITH HOUSE,
MADISON, MADISON COUNTY, FLORIDA**INTERIOR**

The interior consists of two floors and an attic. The floors are finished in three-inch tongue and groove heart pine. Most walls and ceilings are surfaced with original plaster with a semi-smooth surface. All of the first-floor rooms have twelve-foot ceilings and the second-floor rooms have eleven-foot ceilings. The interior spaces of the first floor consist of a stairhall, dining room, living room, parlor, three bedrooms, kitchen, one and one-half bathrooms, and two storage areas (Photos #11-13). There are six fireplaces on the first floor. The second floor is divided into a hall, four bedrooms, two bathrooms, and two storage areas (Photo #14). The attic is a small open storage area.

Through the main door is a stairhall with a wooden stairway against the north wall (Photos #15&16). The quarter turn stairway has decorative newels, spindle balusters, and a rounded handrail (Photos #17&18). The walls have 42 inch vertical pine wainscoting and picture molding. There are doors into the parlor on the north, a bedroom on the south, and opposite the main door on the east are double doors into the dining room. The dining room and living room also have wainscoting and picture moldings. The doors, windows, and trim for each are made of heart pine, originally varnished, but currently painted. All six of the fireplaces are trimmed in oak and have oak mantel pieces that have been painted (Photos #19,20). The hearth and fireplace surrounds are trimmed in varying colors of 1"x3" tile. The house was built with one bathroom on the first floor and one on the second floor. Each bathroom has its original steel claw foot, porcelain bathtub (Photo #21). Both bathrooms have the original wash basins (Photo #22), and the toilet on the second floor is original (Photo #23). The original galvanized water pipes and cast iron waste pipes still remain. Most of the original wiring is still in place but has been disconnected for modern wiring.

The kitchen has sheet rock walls and a composition board ceiling (Photo #24). The kitchen is furnished with cabinets and electrical appliances.

United States Department of the Interior
National Park ServiceNational Register of Historic Places
Continuation SheetSection number 7 Page 5DR. CHANDLER HOLMES SMITH HOUSE,
MADISON, MADISON COUNTY, FLORIDA**ALTERATIONS**

In 1910 the south portion of the first and second floor back porches were enclosed, along with a portion of the north end of the second floor porch. These areas were converted into kitchenettes and a bathroom to allow the second floor bedrooms to be rented. The kitchenettes are now used as storerooms.

In 1948 one window on the north side of the parlor was replaced with French doors to allow easier access to the porch. The northeast corner porch of the first floor of the house was screened. Pocket doors located between the parlor and living room were replaced with wood framed glass doors to allow more light into the interior rooms. French doors located on the east wall of the dining room were replaced with two 3'x6' windows. The kitchen was remodeled and the south wall was extended in 1948 to allow an entrance from the kitchen into the living room. The unfinished walls were sheet rocked and an electric stove was installed. The wall between the breakfast area and the kitchen was removed, and the door from the breakfast area to the dining room was permanently shut. The back porch on the first floor that ran parallel to the south wall of the kitchen and the east wall of the living room was removed. A smaller porch was added on the south wall of the kitchen to allow more light into the living room. The dining room had a door removed into the kitchen and it was used as a guest bedroom. Plaster on the guest bedroom walls was removed and replaced with sheet rock. The butler's pantry on the north side of the kitchen was enclosed and made into a bathroom. The library began use as the living room, while the living room was designated as the dining room. The middle part of the second floor back porch, which was located on the east side of the house, was removed to allow more light to enter the second floor hall. The wood fired water heater was removed from the kitchen and was replaced with a oil fired water heater, which was placed in the old carriage house. In 1960, this heater was removed and a gas water heater was then installed in the storeroom on the southeast corner of the house.

United States Department of the Interior
National Park ServiceNational Register of Historic Places
Continuation SheetSection number 7 Page 6DR. CHANDLER HOLMES SMITH HOUSE,
MADISON, MADISON COUNTY, FLORIDA

Wood lattice between the foundation's brick piers was replaced with brick. The circular dirt driveway was removed from the front of the residence.

In 1955 a central (gas-dual burner) heating system was installed on the first floor, and gas lines was run to all of the bedrooms on the second floor. After Hurricane Kate in 1985, the roof was repaired and new asphalt shingles were installed. This work revealed three layers of asphalt shingles and the original layer of pine shingles, which were removed.

NON-CONTRIBUTING RESOURCES

Located in the southeast of the property is a single-story framed carriage house (Photo #25). It was built with the house in 1896, and had a dirt floor and a hipped roof that was covered with pine wood shingles. The exterior walls were covered with horizontal pine wood siding which was identical to the siding on the Smith House. It originally had two access openings on the west side of the structure which allowed the storage of two carriages. In 1948, a concrete slab was poured under the structure and the west wall access openings were boarded in and a new access opening was made on the south side of the structure. The original hipped roof was replaced with a gabled roof and the wood shingles were replaced with tin. A partition was placed down the center of the structure that runs north to south. Even though these changes are 50 years old, they are not consistent with the Queen Anne style of the main house. The carriage house, therefore, no longer contributes to the significance of the property.

A single-story framed residence is located on the eastern side of the property (Photos #26&27). This residence was moved from Cherry Lake, Florida, in 1948 to its current location. It was built under one of Franklin Roosevelt's Jobs Program called "The Cherry Lake Rehabilitation Project". The Smith's have always used it as rental property and presently it is being rented to the Madison County Memorial Hospital. The buildings from the Cherry Lake Project are historically significant but not related to the significance of the Smith House.

United States Department of the Interior
National Park ServiceNational Register of Historic Places
Continuation SheetSection number 8 Page 1DR. CHANDLER HOLMES SMITH HOUSE,
MADISON, MADISON COUNTY, FLORIDA**SUMMARY**

The Dr. Chandler Holmes Smith Residence is nominated to the National Register on the local level under Criterion C in the area of Architecture. The 1896 house is an excellent example of Queen Anne style architecture, built during the height of the style's popularity. The house was built by William Turner Davis, one of the county's most prominent builders of the period.

HISTORICAL AND ARCHITECTURAL CONTEXT

Madison County was incorporated December 26, 1827, and the Town of Madison was incorporated in 1838. The same year, the County Commission purchased 160 acres from Madison C. Livingston and designated this as the new county seat, the former seat being San Pedro. In the early 1890's Madison became a "city" with a commission form of government. Madison was the commercial center for an agricultural region that raised Sea Island cotton as the primary crop. By 1895, the population of the town was 950. There were 13 brick stores and a public water system was being constructed. By the end of the century there were five churches, three hotels, a volunteer fire department, a bank, and a post office. Businesses had sidewalks, swine and goats were banned from the streets, 15 gas lights were installed, and a telephone system begun.

The house at 302 North Range Street was built for Doctor Chandler H. Smith as a wedding present from his father, Chandler H. Smith Sr. The senior Smith had moved to Madison, Florida, from Rhode Island, around 1850. He was a member of the Florida Legislature in the early 1850's and owned a mercantile business. His son, Dr. Smith, attended medical school in New York and Germany, and interned in Bellevue Hospital to become a doctor and surgeon. After graduation, he intended to practice in Miami, Florida, but stayed in Madison because of his father's ill health. Dr. Smith operated his father's mercantile business, began a medical practice, and married Marie Vann Dial. The homes of both Dr. Smith and his wife's parents are listed in the

United States Department of the Interior
National Park ServiceNational Register of Historic Places
Continuation SheetSection number 8 Page 2DR. CHANDLER HOLMES SMITH HOUSE,
MADISON, MADISON COUNTY, FLORIDA

National Register (NR 1972 and NR 1973 respectively), and are several blocks from the Dr. Smith House. Dr. Smith had eight children and died at the age of 55 in 1918 when he was killed by one of the town's first cars while crossing the street in front of his office. Dr. Smith was survived by his youngest son, Simeon A. Smith, who lived in the residence with his wife until his death on December 27, 1993, died in 1997. The home remains in the Smith family.

The Queen Anne style of residence was popular in the United States from 1880-1910. The style is characterized by irregular foot prints, and complex roofs, often with cross-gables lower than a main hipped roof. Large front porches are common with roofs supported by turned posts and spindlework ornamentation. Elevations had multiple planes, and wall textures were varied, usually with the use of shingles. The main facade often had half timbered extended gables, and extended towers, circular or polygonal, were frequently on one corner of the main facade. Windows are most commonly 1/1 wooden sashes, but a single central light surrounded by colored glass squares was a common artistic sash variation. Door and window surrounds are usually not elaborate, but doors often had some incised decoration and a single light in the upper half.

SIGNIFICANCE

Built in 1896, the residence is an excellent example of the Queen Anne style of architecture; it was built at the height of the style's popularity. The Smith House is designed in one of the most popular variants of the style, having a hipped roof with cross gables, and prominent front gable. Characteristic of the Queen Anne style the home features an engaged two-story tower with octagonal, pointed roof with metal finial, on the southwest corner. There is a hipped roof verandah spanning the west facade, and wrapping the south and north elevations. An extended, half-timbered gable defines the main entrance. The verandah roof is supported by turned posts, and features a handrail with spindle balusters and scroll sawn brackets. The porch, railing, and porch roof are curved on the southwest

United States Department of the Interior
National Park Service

**National Register of Historic Places
Continuation Sheet**

Section number 8 Page 3

DR. CHANDLER HOLMES SMITH HOUSE,
MADISON, MADISON COUNTY, FLORIDA

corner. A half-timber decorated extended gable defines the main entrance, and extended cross gables shelter bay windows on the south and north elevations. The degree of original materials and interior surfaces, fireplaces with mantels, doors, stairwells, and door and window trim is extremely high.

The Smith House was built by local master builder William Turner Davis (1870-1907). He built the W.T. Davis Building, a two-story, brick commercial building fronting on Rutledge Street. The building housed the law, medical, and pharmacy businesses of his three sons. He built the First Baptist Church of Madison (NR 1978), the Dial-Goza House (NR 1973), and the brick Manor Hotel of Madison. Davis built a school in Aucilla, a bank in Perry, and additional residences in Madison, Quincy, and Thomasville, Georgia. He built additional commercial buildings in Madison.

United States Department of the Interior
National Park Service

**National Register of Historic Places
Continuation Sheet**

Section number 9&10 Page 1

DR. CHANDLER HOLMES SMITH HOUSE,
MADISON, MADISON COUNTY, FLORIDA

BIBLIOGRAPHY

Madison County, Clerk of the Circuit Court

Madison County, Property Appraiser's Office

Sims, Elizabeth H., A History of Madison County, Florida,
Madison County Historical Society, 1986.

Smith family papers

VERBAL PROPERTY DESCRIPTION

Lots 53, 54, 55, and 56 and the south 20 feet of Lots 52 and 57,
Block 8, also described as the south 120 feet of Block 8,
Original Town of Madison, Florida, and being a part of the
Northeast $\frac{1}{4}$ of the Southwest $\frac{1}{4}$ of Section 22, Township 1 North,
Range 9 East.

BOUNDARY JUSTIFICATION

The boundary encompasses the property historically associated
with the Dr. Chandler Holmes Smith House.

United States Department of the Interior
National Park Service

National Register of Historic Places
Continuation Sheet

Section number _____ Photographs _____ Page 1

DR. CHANDLER HOLMES SMITH HOUSE,
MADISON, MADISON COUNTY, FLORIDA

PHOTOGRAPH LIST

1. Dr. Chandler Holmes Smith House, 302 North Range Street,
Madison
2. Madison County, Florida
3. Simeon A. Smith
4. November 1996
5. Simeon A. Smith
6. Smith House seen from the corner of Range St., camera facing
northeast
7. Photo #1 of 27

Information for items 1-5 is the same for the remaining
photographs.

6. Main facade, camera facing west
7. Photo #2 of 27

6. Main facade, camera facing west
7. Photo #3 of 27

6. Main entrance, camera facing northwest
7. Photo #4 of 27

6. Engaged tower at southwest corner, camera facing northwest
7. Photo #5 of 27

6. Curved portion of verandah, camera facing north
7. Photo #6 of 27

6. South elevation, camera facing north
7. Photo #7 of 27

6. South half of east elevation, camera facing west
7. Photo #8 of 27

6. East elevation, camera facing west
7. Photo #9 of 27

United States Department of the Interior
National Park Service

**National Register of Historic Places
Continuation Sheet**

Section number _____ Photographs _____ Page 2

DR. CHANDLER HOLMES SMITH HOUSE,
MADISON, MADISON COUNTY, FLORIDA

- 6. Screened northwest corner of verandah, camera facing north
- 7. Photo #10 of 27

- 6. First floor bedroom/tower windows, camera facing southwest
- 7. Photo #11 of 27

- 6. Parlor fireplace and living room, camera facing northeast
- 7. Photo #12 of 27

- 6. French doors in parlor, camera facing north
- 7. Photo #13 of 27

- 6. Second floor hall, camera facing west
- 7. Photo #14 of 27

- 6. Main door and stairhall, camera facing west
- 7. Photo #15 of 27

- 6. Main door and stairwell, camera facing west
- 7. Photo #16 of 27

- 6. Stair railing and newel, camera facing northwest
- 7. Photo #17 of 27

- 6. Stairwell into attic, camera facing east
- 7. Photo #18 of 27

- 6. Fireplace in parlor, camera facing northeast
- 7. Photo #19 of 27

- 6. Fireplace in south bedroom, camera facing northwest
- 7. Photo #20 of 27

- 6. First floor bathtub, camera facing west
- 7. Photo #21 of 27

United States Department of the Interior
National Park Service

**National Register of Historic Places
Continuation Sheet**

Photographs
Section number _____ Page 3

DR. CHANDLER HOLMES SMITH HOUSE,
MADISON, MADISON COUNTY, FLORIDA

- 6. First floor sink, camera facing northeast
- 7. Photo #22 of 27

- 6. Second floor bathroom, camera facing west
- 7. Photo #23 of 27

- 6. Kitchen, camera facing east
- 7. Photo #24 of 27

- 6. Non-contributing carriage house, camera facing northeast
- 7. Photo #25 of 27

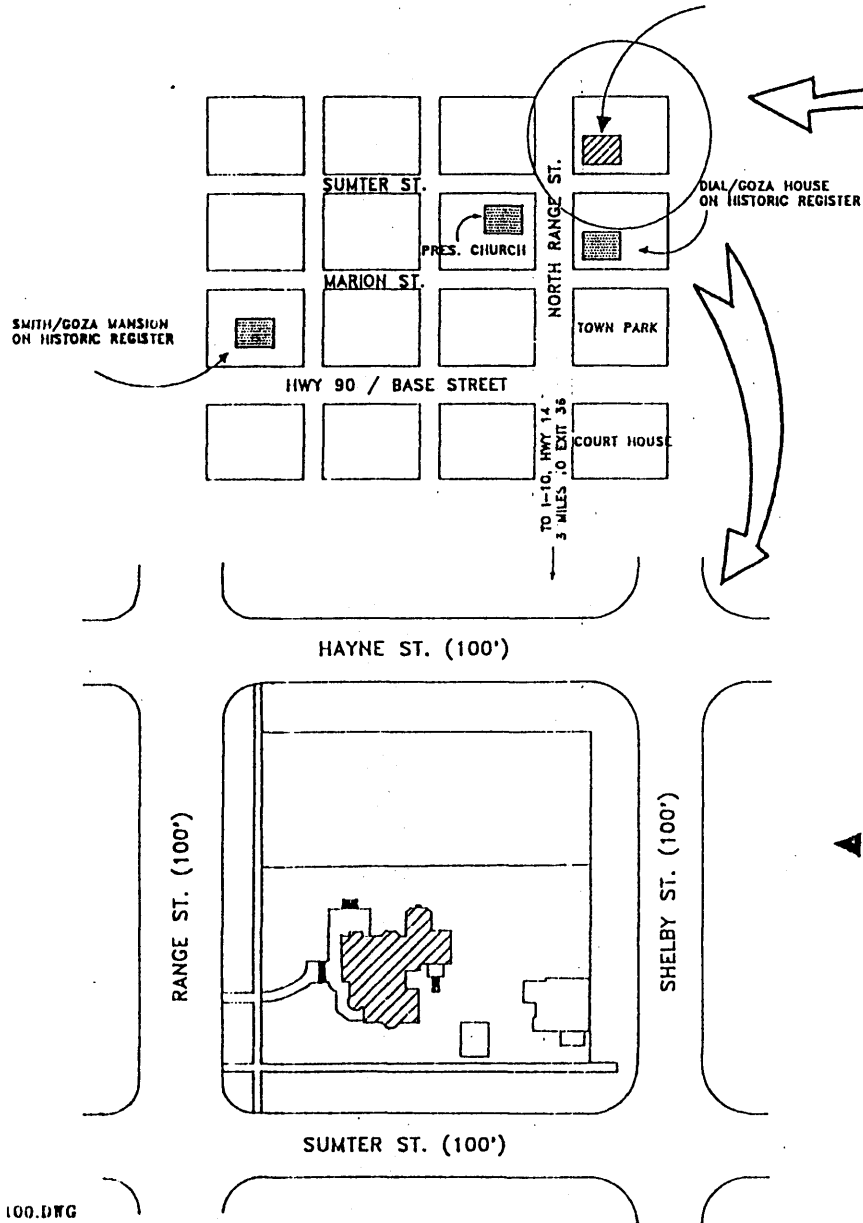
- 6. Non-contributing Cherry Lake house, camera facing north
- 7. Photo #26 of 27

- 6. Non-contributing Cherry Lake house, camera facing west
- 7. Photo #27 of 27

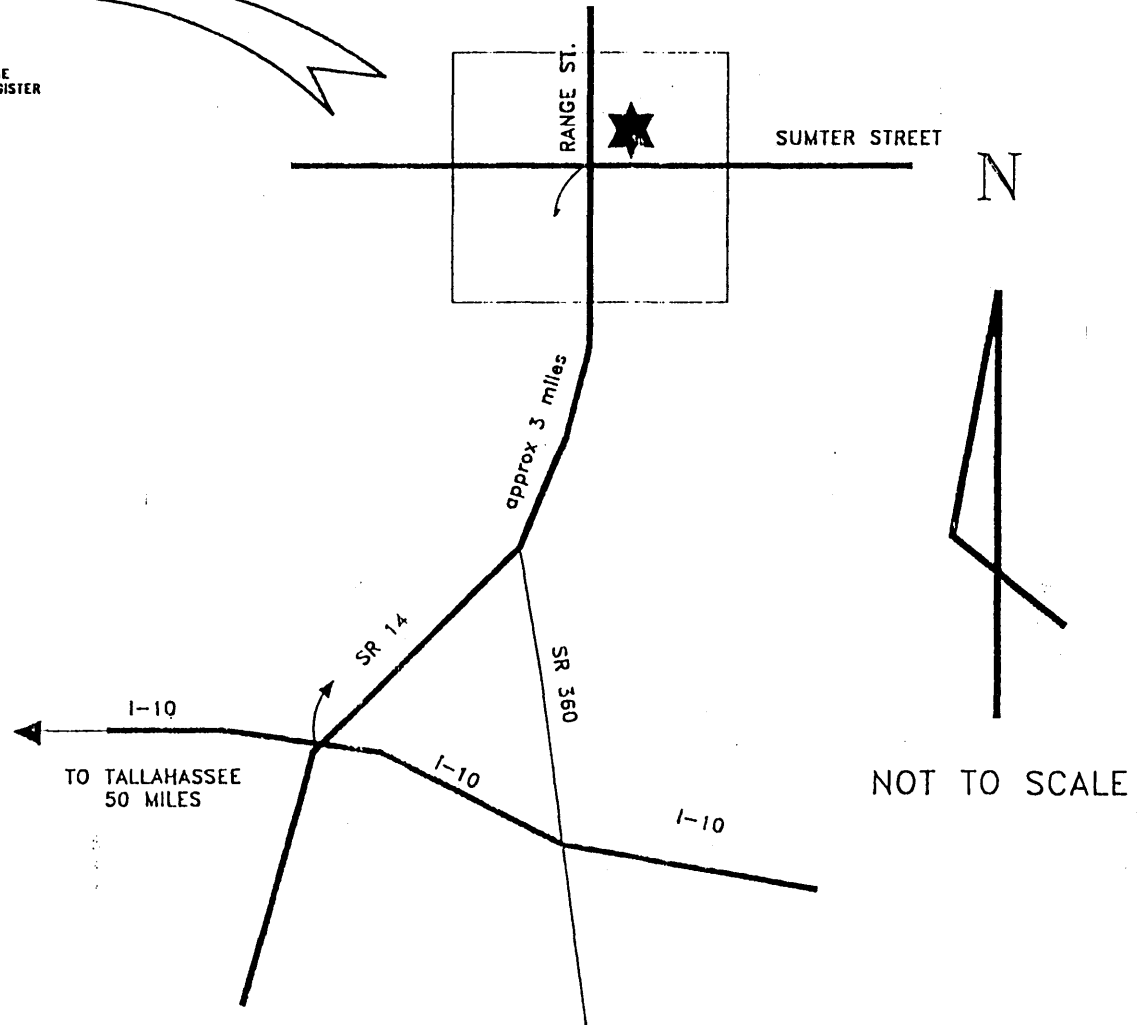
LOCATION SKETCH

302 NORTH RANGE ST.
MADISON, FLORIDA

DR. CHANDLER HOLMES SMITH HOUSE



TOWN OF MADISON



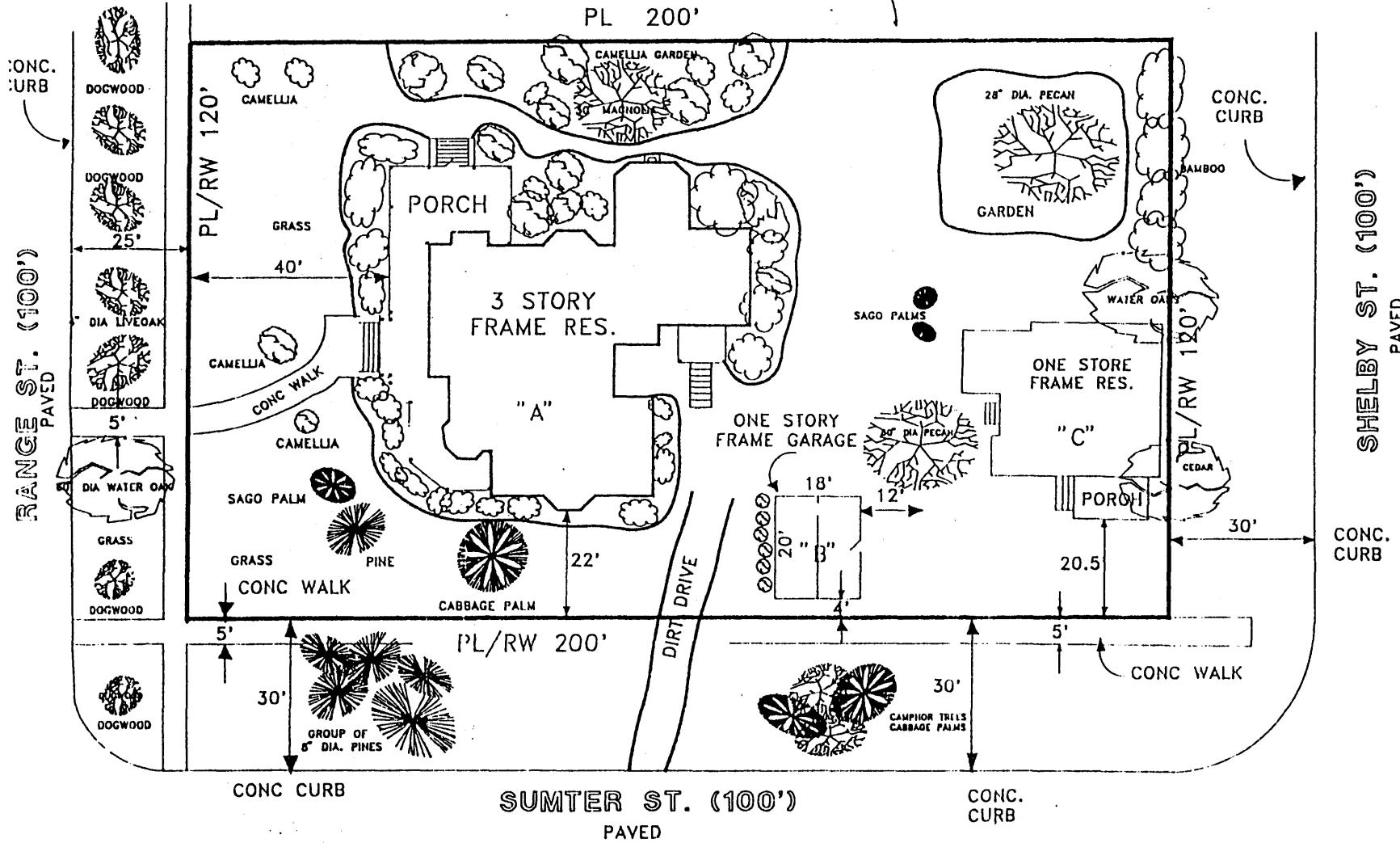
EXISTING STRUCTURES

DR. CHANDLER HOLMES SMITH HOUSE
MADISON, MADISON CO, FL

NOVEMBER 1996

T.C. MERCHANT PROPERTY

N



1" = 25 FEET

PL = PROPERTY
RW = RIGHT-OF-WAY

PROPERTY DESCRIPTION

SEE PAGE 8 OF 8

DR. CHANDLER HOLMES SMITH HOUSE, MADISON, MADISON CO., FL

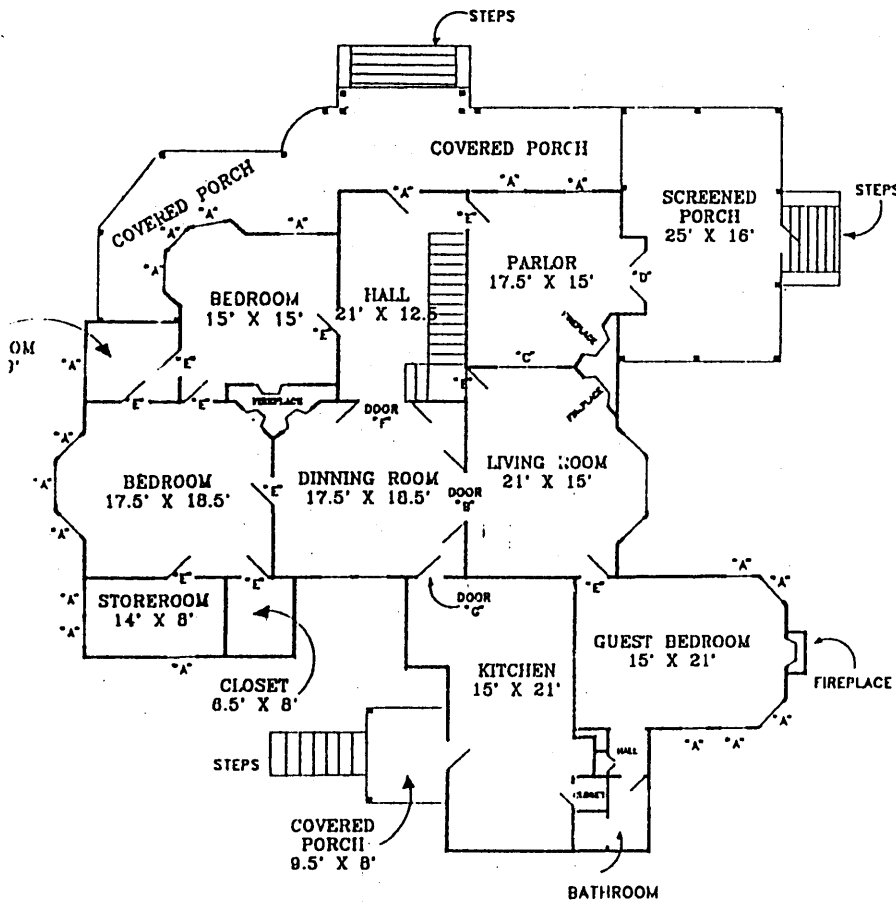
FLOOR LAYOUT

1996

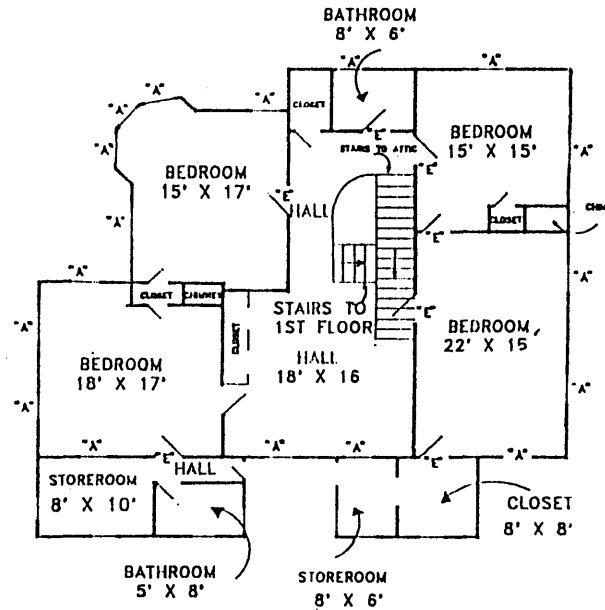


1 INCH = 15"

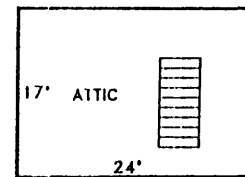
1ST FLOOR



2ND FLOOR



3RD FLOOR (ATTIC)

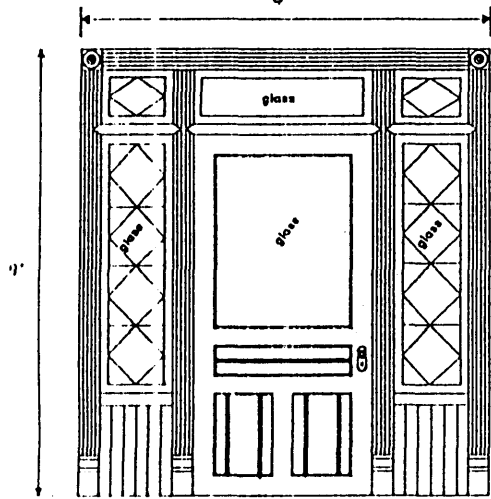


DR. CHANDLER HOLMES SMITH HOUSE, MADISON, MADISON CO., FL

DOOR & WINDOW DETAIL

DOOR "A"

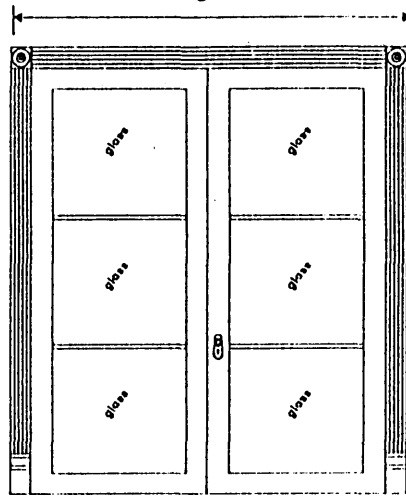
8'



FRONT DOOR

DOOR "B"

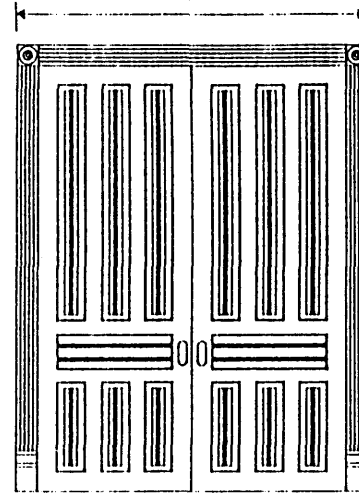
8'



BETWEEN DINNING ROOM & LIVING ROOM

DOOR "C"

8'

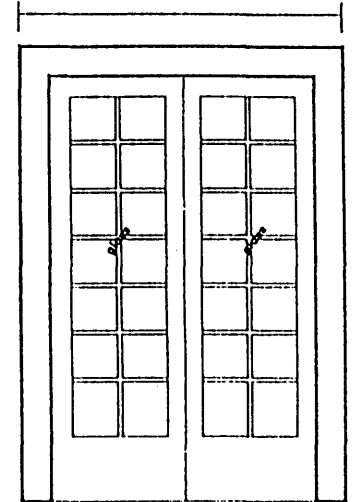


TYPICAL POCKET DOOR

BETWEEN PARLOR & LIVING ROOM

DOOR "D"

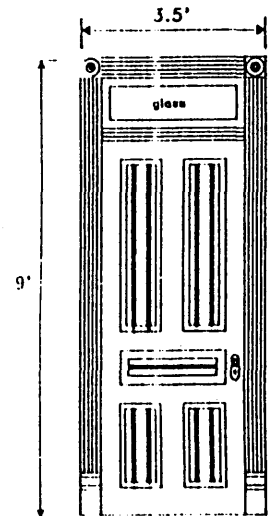
3'



DOOR TO SCREEN PORCH

DOOR "E"

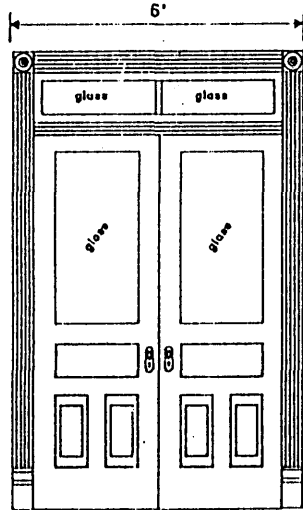
3.5'



TYPICAL DOOR

DOOR "F"

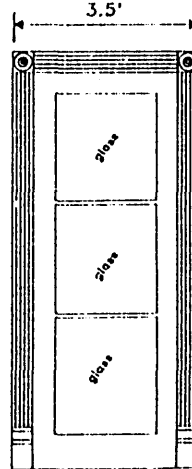
6'



BETWEEN HALL & FAMILY ROOM

DOOR "G"

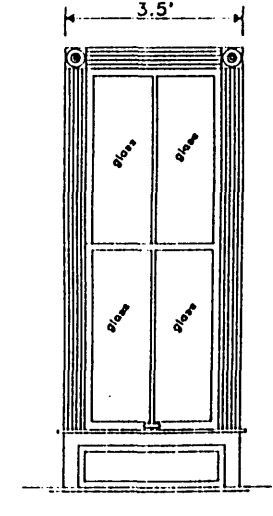
3.5'



KITCHEN DOOR

WINDOW "A"

3.5'



TYPICAL WINDOW