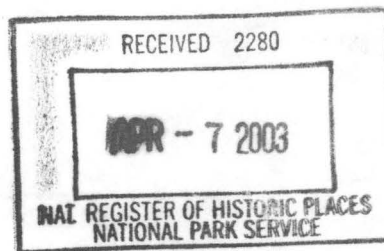


United States Department of the Interior  
National Park Service

National Register of Historic Places  
Registration Form



This form is for use in nominating or requesting determinations for individual properties and districts. See instructions in *How to Complete the National Register of Historic Places Registration Form* (National Register Bulletin 16A). Complete each item by marking "x" in the appropriate box or by entering the information requested. If an item does not apply to the property being documented, enter "N/A" for "not applicable." For functions, architectural classification, materials, and areas of significance, enter only categories and subcategories from the instructions. Place additional entries and narrative items on continuation sheets (NPS Form 10-900a). Use a typewriter, word processor, or computer, to complete all items.

1. Name of Property

historic name Murfreesboro Cities Service Station

other names/site number Site #PI0029

2. Location

street & number NE side of the Town Square

☐ not for publication

city or town Murfreesboro

☐ vicinity

state Arkansas code AR county Pike code 109 zip code 71958

3. State/Federal Agency Certification

As the designated authority under the National Historic Preservation Act, as amended, I hereby certify that this ☒ nomination ☐ request for determination of eligibility meets the documentation standards for registering properties in the National Register of Historic Places and meets the procedural and professional requirements set for in 36 CFR Part 60. In my opinion, the property ☒ meets ☐ does not meet the National Register criteria. I recommend that this property be considered significant ☐ nationally ☐ statewide ☒ locally. (See continuation sheet for additional comments.)

Cathie M. Adams  
Signature of certifying official/Title

4/3/03  
Date

Arkansas Historic Preservation Program  
State or Federal agency and bureau

In my opinion, the property ☐ meets ☐ does not meet the National Register criteria. (☐ See Continuation sheet for additional comments.)

\_\_\_\_\_  
Signature of certifying official/Title

\_\_\_\_\_  
Date

\_\_\_\_\_  
State or Federal agency and bureau

4. National Park Service Certification

I hereby certify that the property is:

☒ entered in the National Register.  
☐ See continuation sheet

☐ determined eligible for the  
National Register.  
☐ See continuation sheet

☐ determined not eligible for the  
National Register.

☐ removed from the National  
Register.

☐ other, (explain:) \_\_\_\_\_

\_\_\_\_\_  
Signature of the Keeper

\_\_\_\_\_  
Date of Action

Daniel J. Vivan

5/18/03 DSV

May 19, 2003

**5. Classification****Ownership of Property**

(Check as many boxes as apply)

- ☒ private  
☐ public-local  
☐ public-State  
☐ public-Federal

**Category of Property**

(Check only one box)

- ☒ building(s)  
☐ district  
☐ site  
☐ structure  
☐ object

**Number of Resources within Property**

(Do not include previously listed resources in count.)

Contributing

Noncontributing

1

buildings

sites

structures

objects

1

Total

**Name of related multiple property listing**

(Enter "N/A" if property is not part of a multiple property listing.)

Arkansas Highway History and Architecture, 1910-1965

**Number of Contributing resources previously listed  
in the National Register****6. Function or Use****Historic Functions**

(Enter categories from instructions)

COMMERCE/TRADE/specialty store

**Current Functions**

(Enter categories from instructions)

VACANT/NOT IN USE

**7. Description****Architectural Classification**

(Enter categories from instructions)

LATE 19<sup>TH</sup> AND 20<sup>TH</sup> CENTURY REVIVALS/Tudor  
or English Revival**Materials**

(Enter categories from instructions)

foundation BRICK

walls BRICK

roof ASPHALT

other

**Narrative Description**

(Describe the historic and current condition of the property on one or more continuation sheets.)

United States Department of the Interior  
National Park Service

## National Register of Historic Places Continuation Sheet

Section number 7 Page 1

---

### SUMMARY

The Murfreesboro Cities Service Station is located on the northeast side of the Town Square. The brick building sits atop a continuous brick foundation, and is topped by an intersecting gable roof. It is the only example of an English Revival style gas station in Murfreesboro.

### ELABORATION

Located on the northeast side of the Town Square, the Murfreesboro Cities Service Station is an excellent example of simplified English Revival style architecture. The rectangular-shaped service station is constructed of brick, and rests on a continuous brick foundation. The building supports an intersecting gable roof sheathed in diamond-shaped asphalt shingles. In the apex of each of the three gables is an oculus that originally displayed a glass middle with the Cities Service logo, surrounded by brick with exposed ends.

### West/Front Elevation

The west elevation fronts Arkansas Highway 26 and it is through this entrance that the office was located. Two large, stationary picture windows supported by concrete sills flank the front door. Green fabric awnings are placed above the front windows and entrance. The defining feature of the front elevation is the steeply pitched intersecting front gable, one of the distinguishing characteristics of English Revival architecture. An oculus exists in the center of the gable.

### South/Side Elevation

The south elevation is fenestrated with one window and one door. The large stationary window is on the west side of the façade, and is supported by a concrete sill. The doorway is on the east side of the façade, and contains a wood door with a window in the top half and three horizontal panels in the bottom half. Green fabric awnings are placed above the window and doorway. An oculus also exists in the center of the gable, and it still retains the original Cities Service logo.

### East/Rear Elevation

Four evenly spaced small windows adorn the rear elevation towards the top of the façade. Each window is supported by a concrete sill and displays two vertical muntins. The original windows are still in place.

### North/Side Elevation

The north elevation is fenestrated like the south elevation with one window and one door. The large stationary window is on the west side of the façade, and is supported by a concrete sill. The doorway is on the east side of the façade, and contains a wood door with a window in the top half and three horizontal panels in the bottom half. An air vent also exists low in the wall in between the window and the door. Green fabric awnings are placed above the window and doorway. An oculus also exists in the center of the gable.

United States Department of the Interior

National Park Service

## National Register of Historic Places Continuation Sheet

Section number 7 Page 2

---

### Integrity

The Murfreesboro Cities Service Station possesses a strong sense of integrity. There have been no structural alterations to the building throughout the years. The gas pumps were removed at an unknown date. The station maintains its integrity of location and setting, since it is located on Arkansas Highway 26 on the northeast side of the Town Square in downtown Murfreesboro. The building beautifully displays the workmanship, design, features, and materials used at the time of its construction. The building was built from a standard Cities Service design, and matches the Rison Cities Service Station in Rison, Cleveland County, Arkansas, (NR listed 05/10/01) and the Walter Patterson Filling Station in Clinton, Van Buren County, Arkansas (NR listed 02/09/01). The building is currently vacant. The interior of the building is very plain with no lavish adornments.



## 8. Statement of Significance

### Applicable National Register Criteria

(Mark "x" in one or more boxes for the criteria qualifying the property for National Register listing.)

- ☒ **A** Property is associated with events that have made a significant contribution to the broad patterns of our history.
- ☐ **B** Property is associated with the lives of persons significant in our past.
- ☐ **C** Property embodies the distinctive characteristics of a type, period, or method of construction or represents the work of a master, or possesses high artistic values, or represents a significant and distinguishable entity whose components lack individual distinction.
- ☐ **D** Property has yielded, or is likely to yield, information important in prehistory or history.

### Criteria Considerations

(Mark "x" in all the boxes that apply.)

Property is:

- ☐ **A** owned by a religious institution or used for religious purposes.
- ☐ **B** removed from its original location.
- ☐ **C** birthplace or grave of a historical figure of outstanding importance.
- ☐ **D** a cemetery.
- ☐ **E** a reconstructed building, object, or structure.
- ☐ **F** a commemorative property
- ☐ **G** less than 50 years of age or achieved significance within the past 50 years.

### Levels of Significance (local, state, national)

Local

### Areas of Significance (Enter categories from instructions)

Architecture

Transportation

### Period of Significance

1939-1953

### Significant Dates

1939

### Significant Person (Complete if Criterion B is marked)

### Cultural Affiliation (Complete if Criterion D is marked)

### Architect/Builder

A. P. Terrell, Builder

### Narrative Statement of Significance

(Explain the significance of the property on one or more continuation sheets.)

## 9. Major Bibliographical References

### Bibliography

(Cite the books, articles, and other sources used in preparing this form on one or more continuation sheets.)

### Previous documentation on file (NPS):

- ☐ preliminary determination of individual listing (36 CFR 67) has been requested
- ☐ previously listed in the National Register
- ☐ Previously determined eligible by the National Register
- ☐ designated a National Historic Landmark
- ☐ recorded by Historic American Buildings Survey # \_\_\_\_\_
- ☐ recorded by Historic American Engineering Record # \_\_\_\_\_

### Primary location of additional data:

- ☒ State Historic Preservation Office
- ☐ Other State Agency
- ☐ Federal Agency
- ☐ Local Government
- ☐ University
- ☒ Other

Name of repository: Murfreesboro Community Foundation

United States Department of the Interior  
National Park Service

## National Register of Historic Places Continuation Sheet

Section number 8 Page 1

### SUMMARY

The Murfreesboro Cities Service Station is being nominated to the National Register of Historic Places with **local significance** under **Criterion A** for its association with the development of Arkansas highway culture. The Murfreesboro Cities Service Station is being submitted to the National Register of Historic Places under the multiple property listing "Arkansas Highway and Transportation Era Architecture, 1910-1965" in conjunction with the historic context "Arkansas Highway History and Architecture, 1910-1965."

### ELABORATION

Pike County was established by an act of the Arkansas Territorial Legislature on November 1, 1833, and was one of the original counties of Arkansas when it became a state in 1836. The county was named after Zebulon Pike, who had discovered Colorado's Pikes Peak in 1806.<sup>1</sup> Also in 1836, the Arkansas General Assembly appointed three commissioners, John Hughes, Rice Stringer, and Henry Brewer, to lay off the town and sell the lots to the highest bidder. The money was to be spent on building a courthouse and jail.<sup>2</sup>

The original name for Murfreesboro was Zebulon. Although the exact origins of the name are unknown, it is likely that it was named after Zebulon Pike, who also gave his name to Pike County. Later, however, the name was changed to Murfreesborough (Murfreesboro). According to legend, many of the new settlers in the area came from Tennessee, and the name was chosen to honor Murfreesboro, Tennessee.<sup>3</sup>

As transportation methods changed, and the automobile became more prevalent, it was necessary to provide facilities, including service stations, to cater to motorists. According to Jean Louise, a historical consultant, "After WWI, assembly lines began producing inexpensive cars at a rapid rate, highway construction boomed and the market for automobile petroleum exploded." During the 1920s many oil companies began refining their marketing strategies, which included adopting distinctive signs and gas station designs. The most prevalent style for gas stations in the 1920s was the domestic style – gas stations that resembled small houses with hipped or gabled roofs – these designs blended nicely with their residential surroundings. For motorists passing by, these domestic designs triggered positive associations such as friendliness, comfort, and security. Many of these buildings were prefabricated and could be ordered from a magazine and built on site by local craftsmen. There are several Cities Service stations located throughout Arkansas that are designed in a plan almost identical to the Murfreesboro Cities Service Station; therefore, it is very possible that this station was

<sup>1</sup> Pike County Heritage Club. *Early History of Pike County, Arkansas*. Delight, AR: Alexander Printing Company, Inc., 1978, p.16.

<sup>2</sup> Pike County Heritage Club, p.69.

<sup>3</sup> Ibid.

United States Department of the Interior  
National Park Service

## National Register of Historic Places Continuation Sheet

Section number 8 Page 2

a prefabricated design used for marketing purposes by those oil companies that were subsidiaries of Cities Service.<sup>4</sup>

The Cities Service Station in Murfreesboro was built in 1939 by A. P. Terrell. The brick used to construct the building was reused from the Leader Building that originally stood on the site. The station was leased to the Arkansas Fuel Oil Company, and was first operated by Alton Terrell. He operated the station for only two years.<sup>5</sup> Little information is known about the subsequent history of the building, but it is known that the building remained in use as a gas station up into the 1980s.

When the Murfreesboro Community Foundation purchased the building c.1989, the gas station had closed and was left vacant. Over the years a small addition had been built on the north side of the building. In addition, the front gable had been removed, and a large canopy had been attached to the building. After the Foundation purchased the building, the goal was to restore the building back to its original condition. As a result, the addition and canopy were removed and the front gable was reconstructed based on a historic photograph of the building.<sup>6</sup> Although it was recently used as an office for the Murfreesboro Chamber of Commerce, it is currently vacant.

The Murfreesboro Cities Service Station is a good example of the small, residential-style gas stations that were popular all across the country in the first part of the twentieth-century. In addition, the meticulous restoration of the building is a testament to the dedication of the Murfreesboro Community Foundation and the residents of Murfreesboro.

### STATEMENT OF SIGNIFICANCE

The Murfreesboro Cities Service Station is being nominated to the National Register of Historic Places with **local significance** under **Criterion A** for its association with the development of Arkansas highway culture. The Murfreesboro Cities Service Station is being submitted to the National Register of Historic Places under the multiple property listing "Arkansas Highway and Transportation Era Architecture, 1910-1965" in conjunction with the historic context "Arkansas Highway History and Architecture, 1910-1965."

<sup>4</sup> Oosterhous, Kara. *Rison Cities Service Station*. National Register of Historic Places Registration Form. From the files of the Arkansas Historic Preservation Program, 2001, p.8-1.

<sup>5</sup> Terrell, Jane. Letter to the author. 27 January 2003.

<sup>6</sup> Terrell, Jane. Telephone conversation with the author. 30 January 2003.

United States Department of the Interior  
National Park Service

## National Register of Historic Places Continuation Sheet

Section number 9 Page 1

---

### BIBLIOGRAPHY

Oosterhous, Kara. *Rison Cities Service Station*. National Register of Historic Places Registration Form. From the files of the Arkansas Historic Preservation Program, 2001.

Pike County Heritage Club. *Early History of Pike County, Arkansas*. Delight, AR: Alexander Printing Company, Inc., 1978.

Terrell, Jane. Letter to the author. 27 January 2003.

Terrell, Jane. Telephone conversation with the author. 30 January 2003.

Murfreesboro Cities Service Station  
Name of Property

Pike County, Arkansas  
County and State

## 10. Geographical Data

Acreage of Property Less than one.

### UTM References

(Place additional UTM references on a continuation sheet.)

1 15 436376 3769096  
Zone Easting Northing  
2 \_\_\_\_\_

3 \_\_\_\_\_  
Zone Easting Northing  
4 \_\_\_\_\_  
☐ See continuation sheet

### Verbal Boundary Description

(Describe the boundaries of the property on a continuation sheet.)

### Boundary Justification

(Explain why the boundaries were selected on a continuation sheet.)

## 11. Form Prepared By

name/title Ralph S. Wilcox, National Register & Survey Coordinator  
organization Arkansas Historic Preservation Program date April 3, 2003  
street & number 1500 Tower Building, 323 Center Street telephone (501) 324-9787  
city or town Little Rock state AR zip code 72201

## Additional Documentation

Submit the following items with the completed form:

### Continuation Sheets

### Maps

A **USGS map** (7.5 or 15 minute series) indicating the property's location

A **Sketch map** for historic districts and properties having large acreage or numerous resources.

### Photographs

Representative **black and white photographs** of the property.

### Additional items

(Check with the SHPO or FPO for any additional items.)

## Property Owner

(Complete this item at the request of SHPO or FPO.)

name Murfreesboro Community Foundation  
street & number PO Box 668 telephone 870-285-3133  
city or town Murfreesboro state AR zip code 71958

**Paperwork Reduction Act Statement:** This information is being collected for applications to the National Register of Historic Places to nominate properties for listing or determine eligibility for listing, to list properties, and to amend existing listing. Response to this request is required to obtain a benefit in accordance with the National Historic Preservation Act, as amended (16 U.S.C. 470 *et seq.*)

**Estimated Burden Statement:** Public reporting burden for this form is estimated to average 18.1 hours per response including time for reviewing instructions, gathering and maintaining data, and completing and reviewing the form. Direct comments regarding this burden estimate or any aspect of this form to the Chief, Administrative Services Division, National Park Service, P. O. Box 37127, Washington, DC 20013-7127; and the Office of Management and Budget, Paperwork Reduction Projects (1024-0018), Washington, DC 20303.



Murfreesboro Cities Service Station

Name of Property

Pike County, Arkansas

County and State

United States Department of the Interior  
National Park Service

# National Register of Historic Places Continuation Sheet

Section number 10 Page 1

---

## VERBAL BOUNDARY DESCRIPTION

Lot No. 6 in Block 2 of Original Survey of the Town of Murfreesboro, Arkansas, per plat thereof recorded in Deed Record Book 1, page 158, of the Deed Records of Pike, County, Arkansas.

## BOUNDARY JUSTIFICATION

The boundary contains the land that is historically associated with the Murfreesboro Cities Service Station.

**United States Department of the Interior  
National Park Service**

**National Register of Historic Places  
Continuation Sheet**

Section number \_\_\_\_\_ Page \_\_\_\_\_

---

**SUPPLEMENTARY LISTING RECORD**

NRIS Reference Number: 03000400

Date of Listing: May 19, 2003

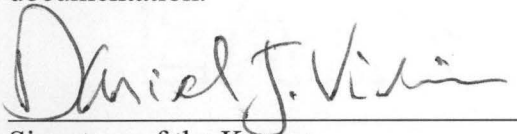
Property Name: Murfreesboro Cities Service Station

County: Pike

State: Arkansas

Arkansas Highway History and Architecture MPS  
Multiple Name

-----  
This property is listed in the National Register of Historic Places in accordance with the attached nomination documentation subject to the following exceptions, exclusions, or amendments, notwithstanding the National Park Service certification included in the nomination documentation.

  
for Signature of the Keeper

May 19, 2003

Date of Action

=====

Amended Items in Nomination:

Section 8. Statement of Significance

Criterion C is hereby added as an applicable National Register criteria to reflect the architectural significance of the property.

---

The Arkansas State Historic Preservation Office was notified of this amendment.

---

**DISTRIBUTION:**

**National Register property file**

**Nominating Authority (without nomination attachment)**

UNITED STATES DEPARTMENT OF THE INTERIOR  
NATIONAL PARK SERVICE

NATIONAL REGISTER OF HISTORIC PLACES  
EVALUATION/RETURN SHEET

REQUESTED ACTION: NOMINATION

PROPERTY Murfreesboro Cities Service Station  
NAME:

MULTIPLE Arkansas Highway History and Architecture MPS  
NAME:

STATE & COUNTY: ARKANSAS, Pike

DATE RECEIVED: 4/07/03 DATE OF PENDING LIST: 5/02/03  
DATE OF 16TH DAY: 5/18/03 DATE OF 45TH DAY: 5/22/03  
DATE OF WEEKLY LIST:

REFERENCE NUMBER: 03000400

REASONS FOR REVIEW:

APPEAL: N DATA PROBLEM: N LANDSCAPE: N LESS THAN 50 YEARS: N  
OTHER: N PDIL: N PERIOD: N PROGRAM UNAPPROVED: N  
REQUEST: Y SAMPLE: N SLR DRAFT: Y NATIONAL: N

COMMENT WAIVER: N

☒ ACCEPT ☐ RETURN ☐ REJECT ☐ DATE

ABSTRACT/SUMMARY COMMENTS:

The Murfreesboro Cities Service Station is locally significant under criteria A and C in the areas of transportation and architecture. The station was built in 1939 and initially used by the Arkansas Fuel Oil Company. Within two years, another company had moved into the building. With its steeply-pitched, gable-front roof, the station is an excellent example of the domestic-style gas stations that were built across the nation between about 1920 and 1950. The similarities between this station and other extant Cities Service stations in Arkansas indicate that it may have been a standardized design used by the company as a marketing tool. The building remained in use as a gas station into the 1980s. Despite the removal of the original gas pumps, the station continues to convey its transportation significance. The property is significant in the context "Arkansas Highway History and Architecture, 1910-1965" included in the multiple property listing "Arkansas Highway and Transportation Era Architecture, 1910-1965" and retains integrity from its period of significance.

RECOM./CRITERIA A, C

REVIEWER Daniel Vivian

DISCIPLINE Historian

TELEPHONE (202) 354-2252

DATE May 19, 2003

DOCUMENTATION see attached comments Y/☒ see attached SLR ☒/N





MURFREESBORO CITIES SERVICE STATION

PIKE COUNTY, AR

AMY BENNETT

JUNE 28, 1999

ARKANSAS HISTORIC PRESERVATION PROGRAM, LITTLE ROCK, AR

EAST FACADE, LOOKING WEST





MURFREESBORO CITIES SERVICE STATION

PIKE COUNTY, AR

AMY BENNETT

JUNE 28, 1999

ARKANSAS HISTORIC PRESERVATION PROGRAM, LITTLE ROCK, AR  
SOUTH AND EAST FACADES, LOOKING NORTHWEST





MURFREESBORO CITIES SERVICE STATION

PIKE COUNTY, AR

AMY BENNETT

JUNE 28, 1999

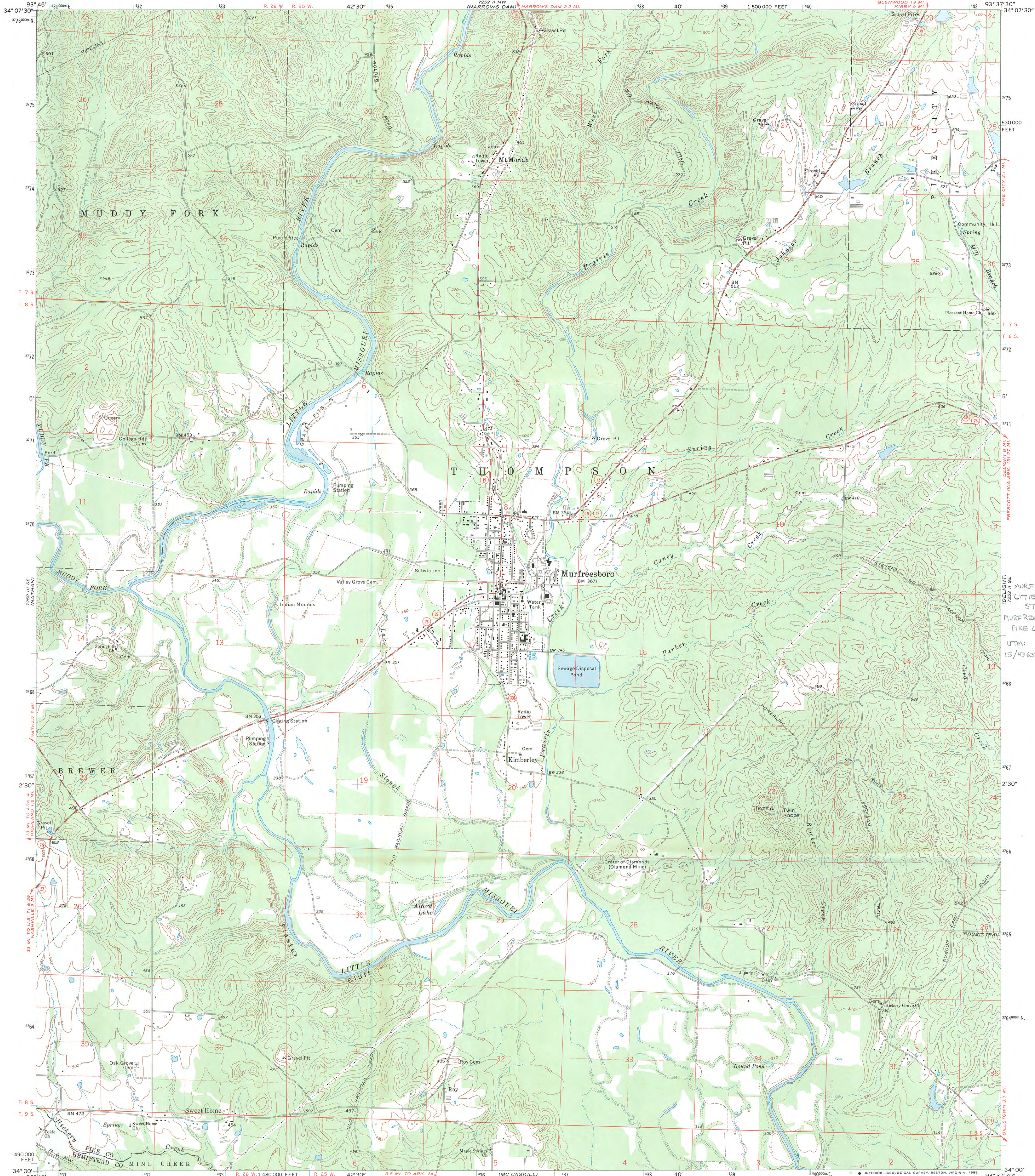
ARKANSAS HISTORIC PRESERVATION PROGRAM, LITTLE ROCK, AR

SOUTH AND WEST FACADES, LOOKING NORTHEAST

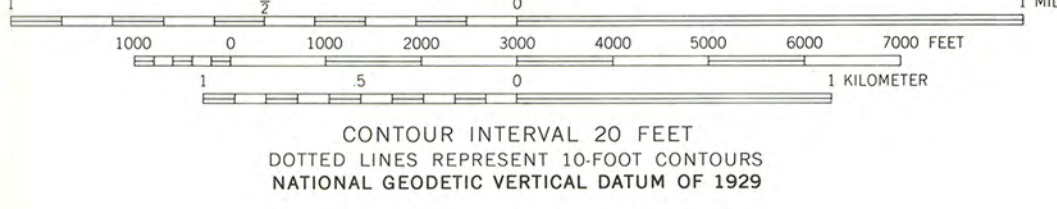
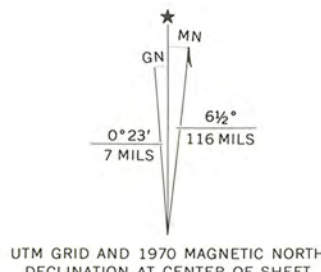


UNITED STATES  
DEPARTMENT OF THE INTERIOR  
GEOLOGICAL SURVEY

MURFREESBORO QUADRANGLE  
ARKANSAS  
7.5 MINUTE SERIES (TOPOGRAPHIC)



Mapped, edited, and published by the Geological Survey  
Control by USGS and USC&GS  
Topography by photogrammetric methods from aerial  
photographs taken 1968. Field checked 1970  
Polyconic projection. 1927 North American datum  
10,000-foot grid based on Arkansas coordinate system, south zone  
1000-meter Universal Transverse Mercator grid ticks,  
zone 15, shown in blue  
Fine red dashed lines indicate selected fence and field lines where  
generally visible on aerial photographs. This information is unchecked  
To place on the predicted North American Datum 1983,  
move the projection lines 8 meters south and  
17 meters east as shown by dashed corner ticks



THIS MAP COMPLIES WITH NATIONAL MAP ACCURACY STANDARDS  
FOR SALE BY U. S. GEOLOGICAL SURVEY, DENVER, COLORADO 80225, OR RESTON, VIRGINIA 22092  
AND ARKANSAS GEOLOGICAL COMMISSION, LITTLE ROCK, ARKANSAS 72204  
A FOLDER DESCRIBING TOPOGRAPHIC MAPS AND SYMBOLS IS AVAILABLE ON REQUEST



ROAD CLASSIFICATION  
Secondary highway, all weather, Light-duty road, all weather,  
hard surface improved surface  
Unimproved road, fair or dry  
weather  
State Route

MURFREESBORO, ARK.  
34093-A6-TF-024  
1970  
DMA 7252 II SW-SERIES V884





# The Department of Arkansas Heritage

Mike Huckabee, Governor  
Cathie Matthews, Director

Arkansas Arts Council

Arkansas Natural Heritage  
Commission

Historic Arkansas Museum

Delta Cultural Center

Old State House Museum



## Arkansas Historic Preservation Program

1500 Tower Building  
323 Center Street  
Little Rock, AR 72201  
(501)324-9880

fax: (501)324-9184

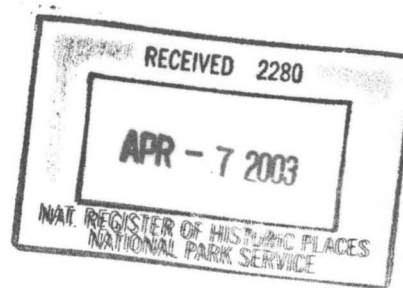
tdd: (501)324-9811

e-mail:

info@arkansaspreservation.org

website:

www.arkansaspreservation.org



April 3, 2003

Carol D. Shull  
Chief of Registration  
United States Department of the Interior  
National Register of Historic Places  
National Park Service  
8th Floor  
1201 Eye Street, NW  
Washington, DC 20005

RE: Murfreesboro Cities Service Station – Murfreesboro, Pike  
County, Arkansas

Dear Carol:

We are enclosing for your review the above-referenced nomination. The Arkansas Historic Preservation Program has complied with all applicable nominating procedures and notification requirements in the nomination process.

If you need further information, please call Ralph S. Wilcox of my staff at (501) 324-9787. Thank you for your cooperation in this matter.

Sincerely,

Cathie Matthews  
State Historic Preservation Officer

CM:rsw

Enclosure

An Equal Opportunity Employer

