



1. The Studebaker Building
2. 600 4th Street South
St. Petersburg, Pinellas County
Florida
3. Betty E. Canerday
4. 1984
5. C. Canerday & Assoc., Architects
1325 Snell Isle Blvd. NE
St. Petersburg, Fl 33704
6. General Streetscape - Westside
looking south on Fourth Street
7. Photo no. 1 of 23.



1. The Studebaker Building
2. 600 4th Street South
St. Petersburg, Pinellas County
Florida
3. Betty E. Canerday
4. 1984
5. C. Canerday & Assoc., Architects
1325 Snell Isle Blvd. NE
St. Petersburg, FL 33704
6. General Streetscape -- Westside
looking west up Sixth Ave. So.
7. Photo no. 2 of 23



1. The Studebaker Building
2. 600 4th Street South
St. Petersburg, Pinellas County
Florida
3. Betty E. Canerday
4. 1984
5. C. Canerday & Assoc., Architects
1325 Snell Isle Blvd. NE
St. Petersburg, Fl 33704
6. View from northside looking
east on Sixth Ave. So.
7. Photo no. 3 of 23



1. The Studebaker Building
2. 600 4th Street South
St. Petersburg, Pinellas County
Florida
3. Betty E. Canerday
4. 1984
5. C. Canerday & Assoc., Architects
1325 Snell Isle Blvd. NE
St. Petersburg, Fl 33704
6. View of Neighborhood
immediately east
7. Photo no.4 of 23



1. The Studebaker Building
2. 600 4th Street South
St. Petersburg, Pinellas County
Florida
3. Betty E. Canerday
4. 1984
5. C. Canerday & Assoc., Architects
1325 Snell Isle Blvd. NE
St. Petersburg, FL 33704
6. Westside - Main entrance faces
Fourth Street

7. Photo no.5 of 23.



1. The Studebaker Building
2. 600 4th Street South
St. Petersburg, Pinellas County
Florida
3. Betty E. Canerday
4. 1984
5. C. Canerday & Assoc., Architects
1325 Snell Isle Blvd. NE
St. Petersburg, Fl 33704
6. Northside - facing Sixth Ave. So.

7. Photo no. 6 of 23.



1. The Studebaker Building
2. 600 4th Street South
St. Petersburg, Pinellas County
Florida
3. Betty E. Canerday
4. 1984
5. C. Canerday & Assoc., Architects
1325 Snell Isle Blvd. NE
St. Petersburg, Fl 33704
6. Eastside - faces residential



1. The Studebaker Building
2. 600 4th Street South
St. Petersburg, Pinellas County
Florida
3. Betty E. Canerday
4. 1984
5. C. Canerday & Assoc., Architects
1325 Snell Isle Blvd. NE
St. Petersburg, Fl, 33704
6. faces
Southside - residential

7. Photo no. 8 of 23.



1. The Studebaker Building
2. 600 4th Street South
St. Petersburg, Pinellas County
Florida
3. Betty E. Canerday
4. 1984
5. C. Canerday & Assoc., Architects
1325 Snell Isle Blvd. NE
St. Petersburg, Fl 33704
6. Westside - Main entrance
faces Fourth Street So.
7. Photo no. 9 of 23 .



1. The Studebaker Building
2. 600 4th Street South
St. Petersburg, Pinellas County
Florida
3. Betty E. Canerday
4. 1984
5. C. Canerday & Assoc., Architects
1325 Snell Isle Blvd. NE
St. Petersburg, Fl 33704
6. Detail of Southwest corner

7. Photo no. 10 of 23



1. The Studebaker Building
2. 600 4th Street South
St. Petersburg, Pinellas County
Florida
3. Betty E. Canerday
4. 1984
5. C. Canerday & Assoc., Architects
1325 Snell Isle Blvd. NE
St. Petersburg, Fl 33704
6. Westside - detail of Brick beside
front entrance
7. Photo no. 11 of 23.



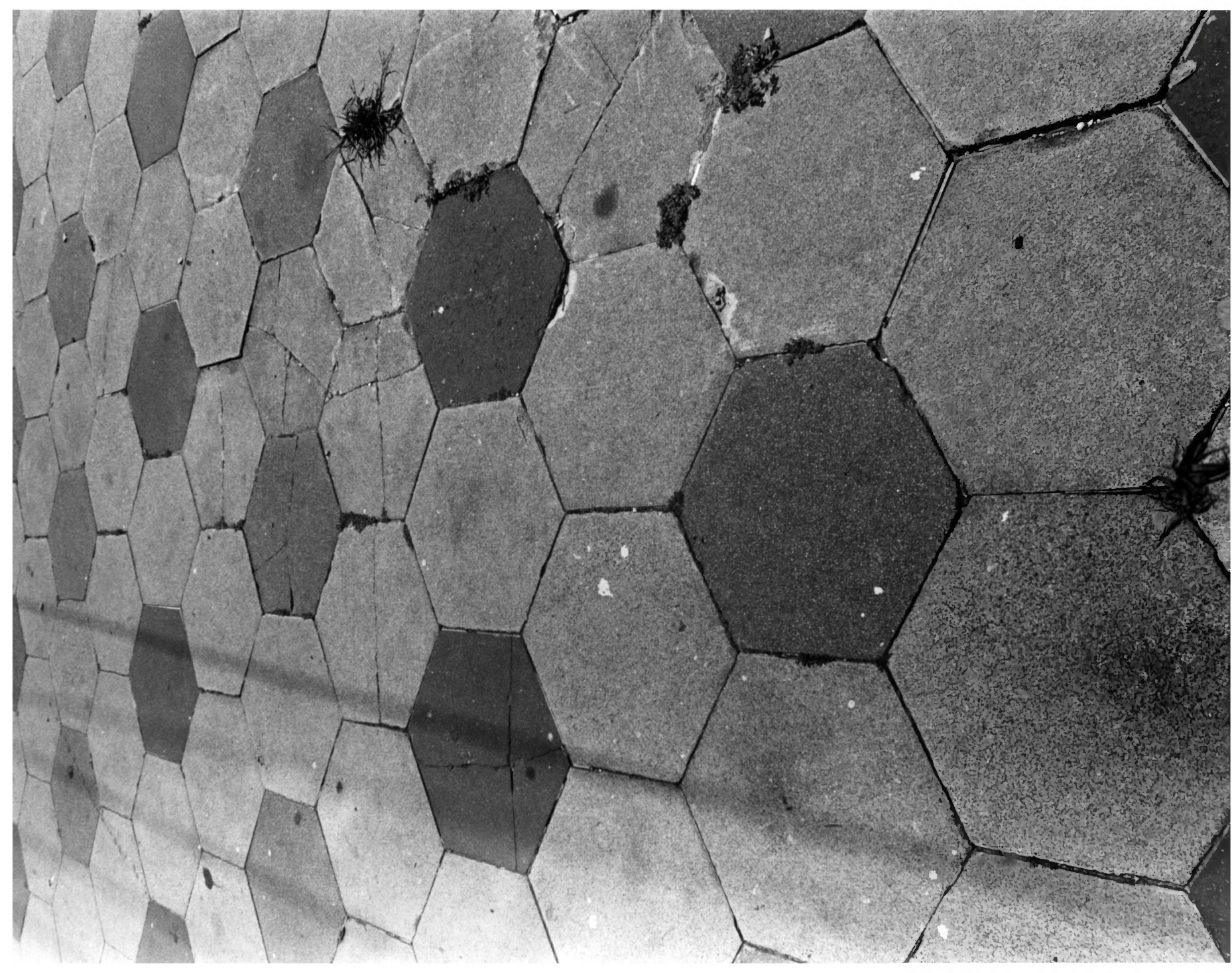
1. The Studebaker Building
2. 600 4th Street South
St. Petersburg, Pinellas County
Florida
3. Betty E. Canerday
4. 1984
5. C. Canerday & Assoc., Architects
1325 Snell Isle Blvd. NE
St. Petersburg, FL 33704
6. Detail of brick and parapet - typical

7. Photo no.12 of 23



1. The Studebaker Building
2. 600 4th Street South
St. Petersburg, Pinellas County
Florida
3. Betty E. Canerday
4. 1984
5. C. Canerday & Assoc., Architects
1325 Snell Isle Blvd. NE
St. Petersburg, Fl 33704
6. Detail of Studebaker dealership log
east concrete

7. Photo no. 13 of 23



1. The Studebaker Building
2. 600 4th Street South
St. Petersburg, Pinellas County
Florida
3. Betty E. Canerday
4. 1984
5. C. Canerday & Assoc., Architects
1325 Snell Isle Blvd. NE
St. Petersburg, Fl 33704
6. Detail of hexagonal block sidewalk
west side
7. Photo no.14 of 23



1. The Studebaker Building
2. 600 4th Street South
St. Petersburg, Pinellas County
Florida
3. Betty E. Canerday
4. 1984
5. C. Canerday & Assoc., Architects
1325 Snell Isle Blvd. NE
St. Petersburg, Fl 33704
6. Brass Siamese connection to fire
suppression system
7. Photo no.15 of 23.



1. The Studebaker Building
2. 600 4th Street South
St. Petersburg, Pinellas County
Florida
3. Betty E. Canerday
4. 1984
5. C. Canerday & Assoc., Architects
1325 Snell Isle Blvd. NE
St. Petersburg, Fl 33704
6. Interior Northwest corner
automobile showroom

7. Photo no. 16 of 23.



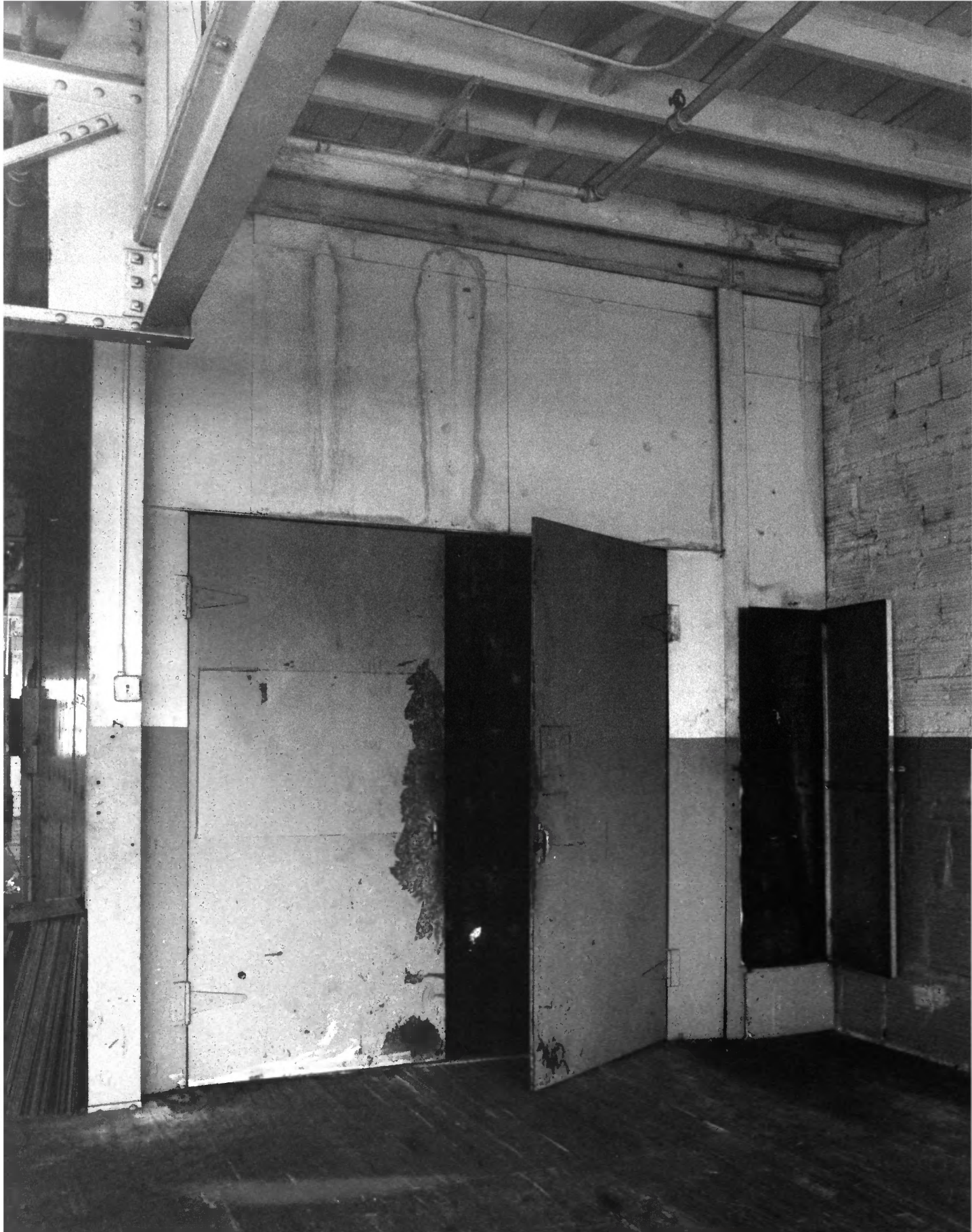
1. The Studebaker Building
2. 600 4th Street South
St. Petersburg, Pinellas County
Florida
3. Betty E. Canerday
4. 1984
5. C. Canerday & Assoc., Architects
1325 Snell Isle Blvd. NE
St. Petersburg, Fl 33704
6. First floor Southeast corner
Auto service area
7. Photo no. 17 of 23



1. The Studebaker Building
2. 600 4th Street South
St. Petersburg, Pinellas County
Florida
3. Betty E. Canerday
4. 1984
5. C. Canerday & Assoc., Architects
1325 Snell Isle Blvd. NE
St. Petersburg, Fl 33704
6. Second floor east side, typical



1. The Studebaker Building
2. 600 4th Street South
St. Petersburg, Pinellas County
Florida
3. Betty E. Canerday
4. 1984
5. C. Canerday & Assoc., Architects
1325 Snell Isle Blvd. NE
St. Petersburg, Fl 33704
6. Detail of tile from showroom floor
7. Photo no. 19 of 23



1. The Studebaker Building
2. 600 4th Street So.
St Petersburg, Pinellas County, Florida
3. Betty E. Canerday
4. 1984
5. C. Canerday & Assoc., Architects
6. Entrance to freight elevator
7. Photo no. 20 of 23



1. The Studebaker Building
2. 600 4th Street So.
St Petersburg, Pinellas County, Florida
3. Betty E. Canerday
4. 1984
5. C. Canerday & Assoc., Architects
6. Freight elevator, detail of interior
7. Photo no. 21 of 23



1. The Studebaker Building
2. 600 4th Street So.
St Petersburg, Pinellas County, Florida
3. Betty E. Canerday
4. 1984
5. C. Canerday & Assoc., Architects
6. Second floor, detail of steel casement windows
7. Photo no. 22 of 23



1. The Studebaker Building
2. 600 4th Street So.
St Petersburg, Pinellas County, Florida
3. Betty E. Canerday
4. 1984
5. C. Canerday & Assoc., Architects
6. Second floor, detail of steel roof
trusses and ceiling
7. Photo no. 23 of 23