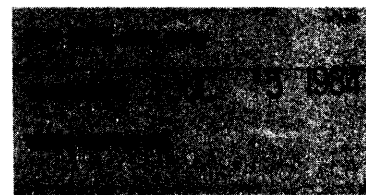


**United States Department of the Interior
National Park Service**

**National Register of Historic Places
Inventory—Nomination Form**



Continuation sheet Pulaski County Multiple Resource Item number
Area, Kentucky

Page

Name: Hotel Beecher (PUS-45)

Location: 203 S. Main Street,
Somerset, KY

Owner: Mr. Glen Neikirk
102 W. Columbia
Somerset, KY 42501

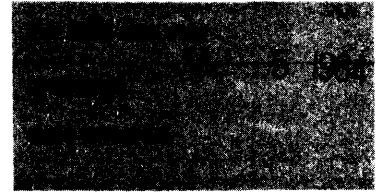
Classification: Building

Description: The Beecher Hotel was constructed in 1929 and is one of Somerset's most architecturally significant commercial structures. The large five-story building was constructed in the Colonial Revival style as a hotel and it has recently been renovated into senior citizen housing. On the east or main elevation is a one-story portico with Tuscan columns, Doric capitals and a balustrade. Behind the portico the entire facing of the first floor is sheathed in cut limestone. The first floor has arched entrances and windows. The windows are of tri-part design with transom bars and an arched transom resembling a Palladian window motif. Above the window arching are radiating voussours. The main entrance has been remodeled but still displays the original broken pediment and pilasters. The building is eleven bays wide with the the central five bays projecting from the main block of the building. On the central five bays are eight-over-eight sash windows on the upper floors. The fourth and fifth floors are divided by a stone belt course and windows on the fifth floor feature rounded arching with keystones. Separating the windows are paired Doric pilasters and the projecting central bay is topped by a balustrade. Windows throughout the upper facade are eight-over-eight sash and the central windows on the second and tenth bays of the third floor feature pedimented hood molding. The interior has recently been remodeled into apartments but the main lobby area and interior layout has not been altered. The lobby features wainscoting, rectangular columns and pilasters and classical plaster designs.

Significance: The Hotel Beecher is significant in both architecture and commerce. It was built by local developers the most notable of which was Beecher Smith for whom the hotel was named. Upon its construction in 1929 the hotel was the largest building in Somerset and it was designed in the Colonial Revival style. Its detailing such as the arched windows and doors, quoins, balustrade and extended portico are fine examples of this style. The hotel was constructed to take advantage of the rising tourist industry of nearby Cumberland Falls and also serve as the main hotel of southeast Kentucky. It was opened in July of 1930 and was acclaimed as one of the most handsome hotels in the state. The building had 76 rooms which were equipped and furnished with the most modern of materials. A Lexington newspaper, "The Leader", reported that "the building would do justice to a city five or six times

**United States Department of the Interior
National Park Service**

**National Register of Historic Places
Inventory—Nomination Form**



Pulaski County Multiple Resource
Continuation sheet Area, Kentucky

Item number

Page

as large as Somerset", and called it the finest hotel between Lexington and Chattanooga. The hotel has not been significantly altered in past years and the recent restoration has left the exterior and major interior spaces intact. The Hotel Beecher continues to be one of Somerset's most notable buildings.

Acreage: .62

Verbal Boundary Description: The boundary encompassing the property is designated as lot 3 of block 5 on Somerset tax maps.

UTM References: 16/712780/4107362