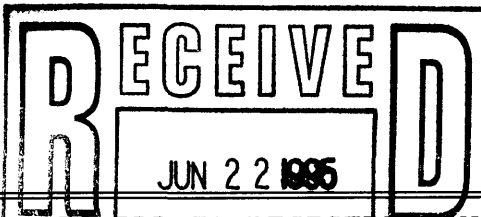


902



NATIONAL REGISTER OF HISTORIC PLACES REGISTRATION FORM

~~INTERAGENCY RESOURCES DIVISION~~

~~NATIONAL PARK SERVICE~~

~~NATIONAL REGISTER BRANCH~~

This form is for use in nominating or requesting determinations of eligibility for individual properties or districts. See instructions in "Guidelines for Completing National Register Forms" (National Register Bulletin 16). Complete each item by marking "x" in the appropriate box or by entering the requested information. If an item does not apply to the property being documented, enter "N/A" for "not applicable." For functions, styles, materials, and areas of significance, enter only the categories and subcategories listed in the instructions. For additional space use continuation sheets (Form 10-900a). Type all entries.

1. Name of Property

historic name COLLEGE STREET SCHOOL
other names/site number N/A

2. Location

street & number 580 College St.
city, town Hapeville (N/A) vicinity of
county Fulton code GA 121
state Georgia code GA zip code 30354

(N/A) not for publication

3. Classification

Ownership of Property:

- private
- public-local
- public-state
- public-federal

Category of Property

- building(s)
- district
- site
- structure
- object

Number of Resources within Property:

	<u>Contributing</u>	<u>Noncontributing</u>
buildings	1	0
sites	0	0
structures	0	0
objects	0	0
total	1	0

Contributing resources previously listed in the National Register: 0

Name of related multiple property listing: N/A

4. State/Federal Agency Certification

As the designated authority under the National Historic Preservation Act of 1966, as amended, I hereby certify that this nomination meets the documentation standards for registering properties in the National Register of Historic Places and meets the procedural and professional requirements set forth in 36 CFR Part 60. In my opinion, the property meets the National Register criteria. () See continuation sheet.

Mark R. Edwards
Signature of certifying official

6/21/95
Date

Mark R. Edwards
State Historic Preservation Officer,
Georgia Department of Natural Resources

In my opinion, the property () meets () does not meet the National Register criteria. () See continuation sheet.

Signature of commenting or other official

Date

State or Federal agency or bureau

5. National Park Service Certification

I, hereby, certify that this property is:

entered in the National Register

() determined eligible for the National Register

() determined not eligible for the National Register

() removed from the National Register

() other, explain:

() see continuation sheet

Edson H. Beall 7/21/95
**Entered in the
National Register**

for
Signature, Keeper of the National Register Date

6. Function or Use

Historic Functions:

EDUCATION/school

Current Functions:

VACANT/NOT IN USE

7. Description

Architectural Classification:

LATE 19TH AND 20TH CENTURY AMERICAN MOVEMENTS/Bungalow/Craftsman

Materials:

foundation	brick
walls	brick
roof	asphalt shingles
other	N/A

Description of present and historic physical appearance:

The College Street School is located in Hapeville, a city in south Fulton County, south of the county seat of Atlanta and adjacent to Atlanta's Hartsfield International Airport. The school is located just southeast of the main street and railroad track.

The College Street School is a two-story, rectangular, brick building built in 1915 in the Craftsman style. Two-story brick wings and a rear ell were added to each side in 1932 and replicate the original design. The building contains original wooden windows with large panes surrounded by smaller panes from the 1915 design and carried over into the 1932 additions.

The central-hall floorplan allows for all classrooms to have exterior walls. The original wood floors are covered with tile, and the plaster walls and original 30 inch high wainscoting remain. The ornamentation is typically austere for a school building, but exemplifies excellent craftsmanship.

The school is built with solid brick exterior walls, a reinforced concrete foundation, and permanent interior walls. The historical mechanical systems remain and include a steam radiator heating system, and the lighting system.

There are no outbuildings. The school sits in a residential area of town, facing toward the Central Business District one block away. It is adjacent to the Hapeville First Baptist Church, Missionary House on the west, apartments on the east as well as residences on three sides.

The major change to the 1915 building was the addition in 1932 of eight

United States Department of the Interior
National Park Service

**National Register of Historic Places
Continuation Sheet**

Section 7

classrooms, four on each end, and a small library and auditorium ell at the rear. Acoustical tile ceilings were also added, and other fire safety features.

8. Statement of Significance

Certifying official has considered the significance of this property in relation to other properties:

nationally statewide locally

Applicable National Register Criteria:

A B C D

Criteria Considerations (Exceptions): N/A

A B C D E F G

Areas of Significance (enter categories from instructions):

ARCHITECTURE
EDUCATION

Period of Significance:

1915-1945

Significant Dates:

1915, 1932

Significant Person(s):

N/A

Cultural Affiliation:

N/A

Architect(s)/Builder(s):

Battle and Barili, Atlanta, Architects (1915)
Bond, George Harwell (for additions, 1932)

National Register of Historic Places
Continuation Sheet

Section 8

Significance of property, justification of criteria, criteria considerations, and areas and periods of significance noted above:

Narrative statement of significance (areas of significance)

The College Street School is significant in architecture because it is a good example of early 20th-century public school design featuring central hallway plans and large windows for light and air. It is also significant for its restrained use of elements of the Craftsman style for a school in 1915. Its window panes, and some use of half-timbered decorations on the front facade, were the only ornamentation used but are elements of the Craftsman movement prevalent at the time. The 1932 additions continued this style. The school was designed in 1915 by Battle and Barili, an Atlanta firm whose partners had worked with some of the more well-known architects of schools in Atlanta at the time. It is a good example of school architecture blending into a neighborhood where a Craftsman-style dwelling would not have been out-of-place, hence the school reflected a similar style, although on an obviously larger scale.

The building is also significant in education because it was built to be a neighborhood school, and to replace an earlier wooden, and totally inadequate, educational facility. While the first brick school burned only three years after it was constructed (1912-1915), it was quickly replaced with the current central block which represents the hopes for a better education for the white elementary students of Hapeville. It was their only elementary school from 1915 until 1932 when a second school was built. It became a combination elementary school/high school briefly in 1938 until the high school opened in 1939. The school, whose site had been used for educational purposes since 1888, closed in 1970.

National Register Criteria

The College Street School meets National Register Criterion A because it served as the city's only white elementary school for nearly twenty years. It also meets National Register Criterion C because it is a good example of the adaptation of the Craftsman style to enhance an otherwise utilitarian school building.

Criteria Considerations (if applicable)

N/A

National Register of Historic Places
Continuation Sheet

Section 8

Period of significance (justification)

The period of significance runs for 30 years, from 1915, when the original building was built to replace an earlier school which burned, until 1945, the end of the historic period, because it remained an active and viable institution during the entire time.

Contributing/Noncontributing Resources (explanation, if necessary)

There is only one building on the property.

Developmental history/historic context (if applicable)

Hapeville, Georgia, is a city on the southside of metro-Atlanta that has recently been encroached upon by the Atlanta Airport. Founded by Dr. Samuel Hape (1830-1915), the town's namesake, before 1874, it remains a separate corporate entity in a growing Atlanta. It became a city in 1891.

College Street School sits on property that has been used for educational purposes since 1888 when land was donated for the Hapeville Seminary. In 1892 the land was deeded to the city of Hapeville and the school's name changed to the Hapeville School. In 1911, the mayor and city council of Hapeville agreed to sell the old school to Fulton County for \$10,000. They also agreed to tear down the original school and build a "modern" one. Even though it was a new school, it had neither electricity or running water. In 1915, the original two-story brick school, built in 1911, burned.

The hopes of the city were dashed when on the night of September 4-5, 1915, just before the start of the new school year, the entire building burned to the ground:

NEW HAPEVILLE SCHOOL DESTROYED BY FLAMES

The new Hapeville public school was totally destroyed at midnight by a fire which is supposed to have been of incendiary origin. The building, which was brick and cost \$12,000, was insured for \$5,000.

When discovered by the town marshall, E.M. Adams, the building was in flames and burned to the ground shortly after. The fire department, which has been organized since the recent installation of the water system, was unable to cope with the flames as the department is supplied so far with only 300 feet of hose. The Atlanta [Fire] department was called upon, but could not respond as the fire was

National Register of Historic Places
Continuation Sheet

Section 8

without the [Atlanta] city fire limits.

The fire, it is said, started in the basement. Here plumbers were at work Saturday getting the building in shape for school to commence September 13. City Councilman W.G. Dunn, when communicated with, while he was actively fighting the flames, was of the opinion that the building was burned either by incendiaries or the flames were accidentally started by gamblers who had slipped into the building for game.

After the 1915 fire, work began immediately to replace the school so that classes could resume as soon as possible. During the interim, students had to go to school in stores and churches.

The new school, the core of the present College Street School, opened in 1915. It was designed by the Atlanta architectural firm of Battle and Barili. During the 1920s, the population of Hapeville tripled, and thus portable classrooms were placed on the school grounds, as shown in a 1925 Sanborn Fire Insurance Map.

In 1932, there was an addition of eight classrooms, a library, an auditorium, and storage areas to the original building. Designed by George Harwell Bond of Atlanta, the additions were on either end of the 1915 block and complimented the original design. At this time, the name of the school was changed to "College Street School" in September, 1932 because the city had built another school, North Avenue School, and thus no school could be called the "Hapeville School".

The 8-10th grades were added to the elementary school during the 1930s and in 1939 moved out of the College Street School to the newly-built Hapeville High School. During this time, in 1938, the College Street School was divided into elementary and secondary (high) school, with separate principals. It thus had only a brief tenure as the city's white high school. Also in the 1930s, the children at the Georgia Baptist Children's Home began attending the school. The farm at the home supplied the school with vegetables. There was an operative PTA (Parent Teachers Association) during this time that helped conduct a carnival and talent show to raise money for special projects.

During the 1940s, the remaining school students were elementary level. They participated in the World War II efforts by planting a Victory Garden at the school.

The school operated until the 1960s. Integration had come to the school, but several other forces were at work that brought the closing of the school. One was the encroaching Atlanta Airport which took away many

**National Register of Historic Places
Continuation Sheet**

Section 8

houses and thus students from the school. Then in 1967, the Georgia Baptist Children's Home moved to Palmetto at the far south end of Fulton County, thus withdrawing their students.

The College Street School closed in May, 1970.

A "Commemorative Tea" was held on May 17, 1970 to remember the "good old days" when College Street was as active school. After the school closed, it was used first as a Special Education Department, but in recent years has been vacant.

In July, 1993, the City of Hapeville and the Hapeville Development Authority became the new owners, after it was purchased from Fulton County.

Under new ownership, the College Street School and its many alumni await its new future.

9. Major Bibliographic References

McElhannon, Cora Lee. "College Street School". Historic Property Information Form, August 9, 1991. On file at the Historic Preservation Division, Department of Natural Resources, Atlanta, GA.

Previous documentation on file (NPS): (X) N/A

- () preliminary determination of individual listing (36 CFR 67) has been requested
- () previously listed in the National Register
- () previously determined eligible by the National Register
- () designated a National Historic Landmark
- () recorded by Historic American Buildings Survey #
- () recorded by Historic American Engineering Record #

Primary location of additional data:

- (X) State historic preservation office
- () Other State Agency
- () Federal agency
- () Local government
- () University
- (X) Other, Specify Repository: Hapeville (GA) Historical Society

Georgia Historic Resources Survey Number (if assigned): N/A

10. Geographical Data

Acreage of Property 1.9 acres

UTM References

A) Zone 16 Easting 740300 Northing 3726780

Verbal Boundary Description

The boundary of the nominated property is marked on the enclosed tax map.

Boundary Justification

The nominated property is all that remains associated with the building and all that the owner owns at this location. These boundaries are historical and have been associated with the property since the first school was built here in the 1880s.

11. Form Prepared By

name/title Kenneth H. Thomas, Jr., Historian
organization Historic Preservation Division, Georgia Department of Natural Resources
street & number 205 Butler Street, S.E., Suite 1462
city or town Atlanta **state** Georgia **zip code** 30334
telephone (404) 656-2840 **date** June 7, 1995

(OHP form version 12-08-93)

United States Department of the Interior
National Park Service

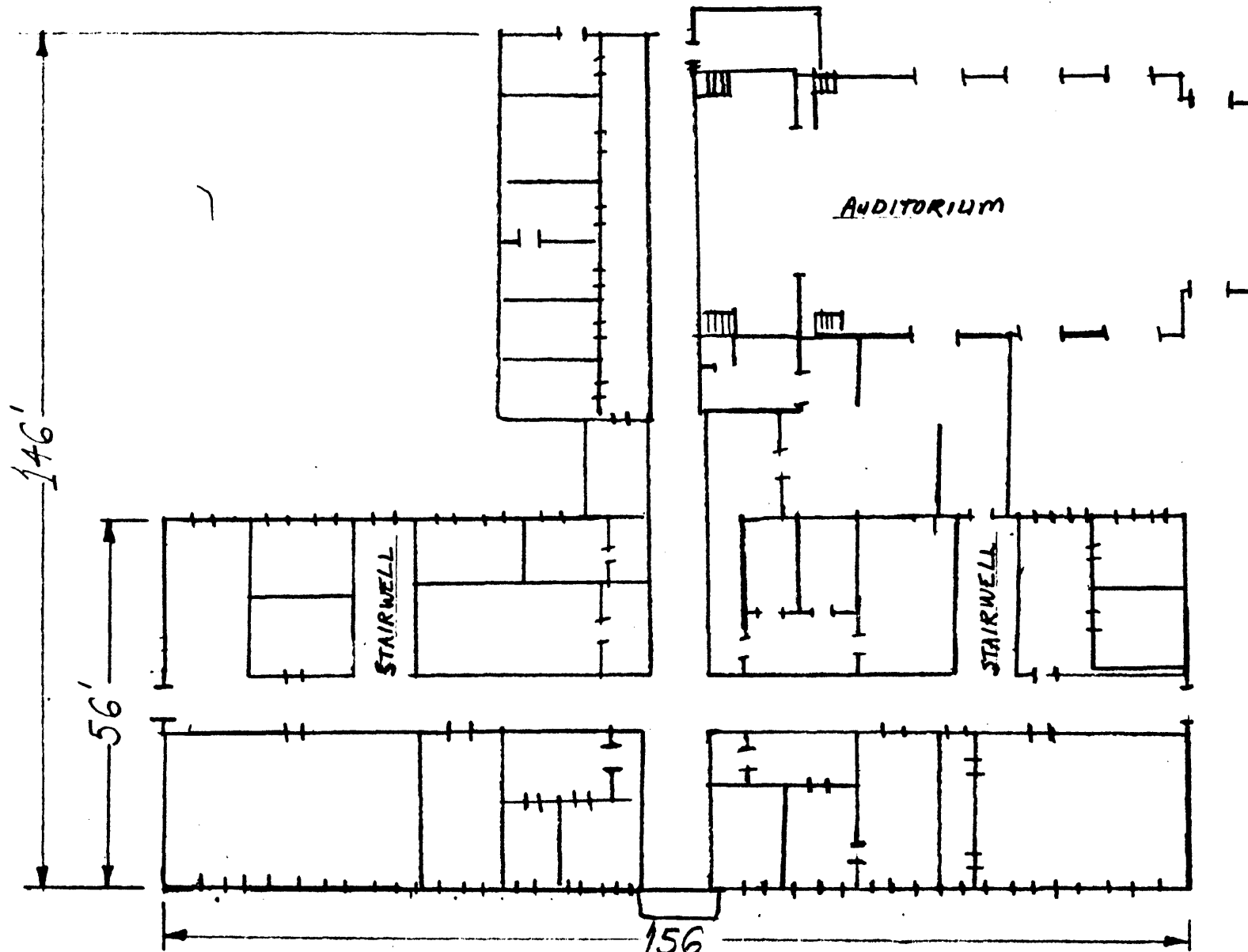
National Register of Historic Places
Continuation Sheet

Photographs

Name of Property: College Street School
City or Vicinity: Hapeville
County: Fulton
State: Georgia
Photographer: James R. Lockhart
Negative Filed: Georgia Department of Natural Resources
Date Photographed: September, 1994

Description of Photograph(s):

- 1 of 13 Front Facade (College Street Facade); photographer facing southwest.
- 2 of 13 Rear Facade with library/auditorium wing; photographer facing northwest.
- 3 of 13 Library/auditorium wing; photographer facing west.
- 4 of 13 East end entrance; photographer facing west.
- 5 of 13 West end entrance and auditorium entrance; photographer facing northeast.
- 6 of 13 Front entrance on College St.; photographer facing south.
- 7 of 13 First floor classroom; photographer facing northeast.
- 8 of 13 First floor hallway; photographer facing east.
- 9 of 13 First floor hallway; photographer facing east.
- 10 of 13 First floor, east stairway; photographer facing southeast.
- 11 of 13 Second floor classroom; photographer facing north.
- 12 of 13 Basement with boiler; photographer facing north.
- 13 of 13 Auditorium; photographer facing east.



FIRST FLOOR PLAN

College Street School
 Hapeville, Fulton County, Georgia
 SCALE: Marked on Map
 SOURCE: W.K. McElhannon from plans
 DATE: 1991
 KEY: First Floor Plan

College St. 235.5

SCHOOL

AVE.

189.2

186

235

147

85

61

3608

11

61

3619

147

150

121.4

2

3623

130

63

3614

10

63

150

144.5

91

3627

50

50

3618

5

50

50

144.5

98

47.5

50

50

3622

200

200

50

85

50

3626

7

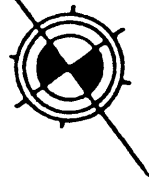
50

200

3637

204

College Street School
 Hapeville, Fulton County, Georgia
 SCALE: Marked on Map
 SOURCE: Fulton Co. Tax Assessors Office
 DATE: 1991
 KEY: The nominated parcel is marked by a heavy black line.



CEMENT ASPHALT

GEORGIA

UNION