



Ramsay House
Ellensburg, Washington

Jeffrey G. Condit

April 1985

Washington State Office of Archae-
ology and Historic Preservation

South (facade) and East elevations,
looking Northwest.

1 of 11



Ramsay House
Ellensburg, Washington

Jeffrey G. Condit

April 1985

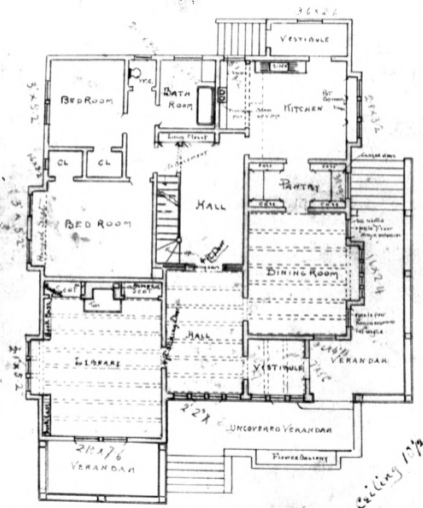
Washington State Office of Archae-
ology and Historic Preservation

South (facade) and West elevations,
showing grounds, looking Northeast.

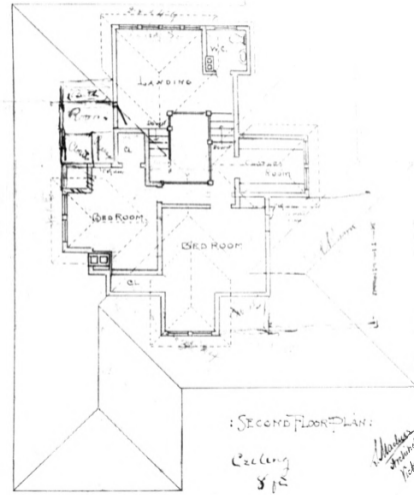
2 of 11

PLAN OF BUNGALOW FOR DAVID RAMSAY Esq.

ELLENBURG, WASHINGTON:



GROUND FLOOR PLAN:



SECOND FLOOR PLAN:

ceiling 8 1/2

Handwritten signature: M. H. ...
 Architect
 Picture 10

SCALE 1/8" INCH = 1 FOOT

Ramsay House
Ellensburg, Washington

Jeffrey G. Condit

April 1985

Washington State Office of Archae-
ology and Historic Preservation

Samuel Maclure drawing of floorplan,
1903.

3 of 11



Ramsay House
Ellensburg, Washington

Jeffrey G. Condit

April 1985

Washington State Office of Archae-
ology and Historic Preservation

Vestibule and main entrance,
looking east

4 of 11

Details: House at Ellersburg, Washington, D.C.

W.D. Murray, Esq.

March 1902

1/2" = 1' 0" (vertical)
1/4" = 1' 0" (horizontal)

Striped Burlap Paper

Carving in Relief

Carving in Relief

Plaster Wall
Painted with Burlap

Burlap

Stair stringer top

Cedar

Green Sappanone Marble

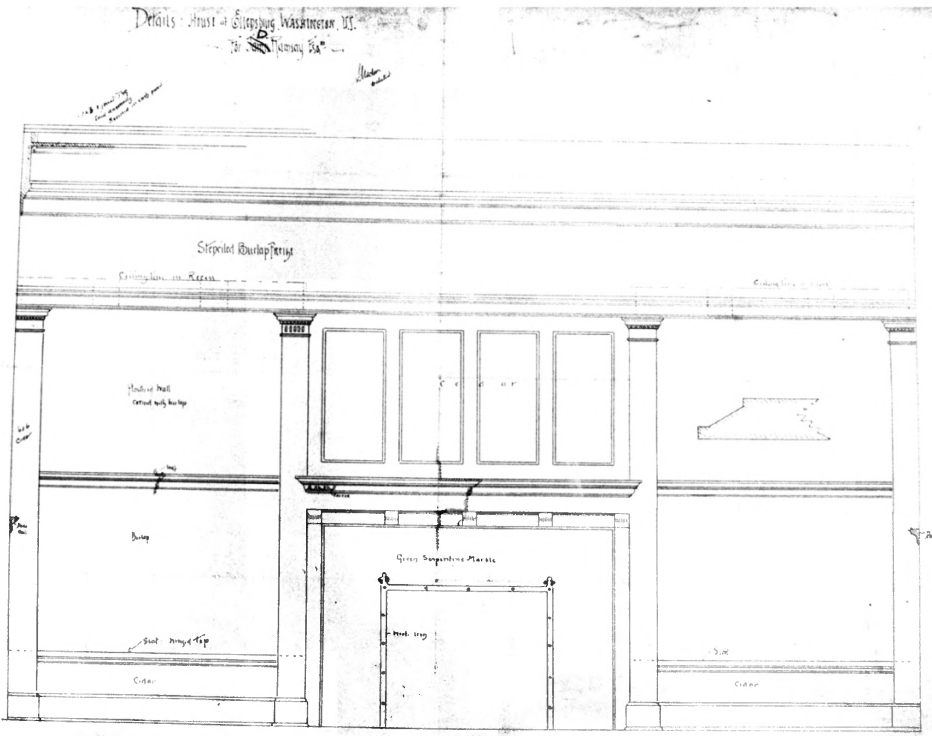
Marble top

Stair

Cedar

1 inch = 1 foot

Elevation of Mantel and End of Library



Ramsay House
Ellensburg, Washington

Jeffrey G. Condit

April 1985

Washington State Office of Archae-
ology and Historic Preservation

Samuel Maclure drawing of Mantel
end of Library (representative
example of one of several original
drawings by Maclure of the plans,
elevations, and details of the
Ramsay House, which are still extant
and in possession of the current
owners).



Ramsay House
Ellensburg Washington

Jeffrey G. Condit
April, 1985

Washington State Office of Archae-
ology and Historic Preservation

Mantel end of Library, looking
North



Ramsay House
Ellensburg, Washington

Jeffrey G. Condit

April 1985

Washington State Office of Archae-
ology and Historic Preservation

Bookcase end of library, looking
West.

7 of 11



Ramsay House
Ellensburg, Washington

Jeffrey G. Condit

April 1985

Washington State Office of Archae-
ology and Historic Preservation

Entrance hall, looking South.

8 of 11



Ramsay House
Ellensburg, Washington

Jeffrey G. Condit

April 1985

Washington State Office of Archae-
ology and Historic Preservation

Dining room, looking Southeast

9 of 11



Ramsay House
Ellensburg, Washington

Jeffrey G. Condit
April 1985

Washington State Office of Archae-
ology and Historic Preservation

Stair hall, looking North.

10 of 11



Ramsay House
Ellensburg, Washington

Jeffrey G. Condit

April 1985

Washington State Office of Archae-
ology and Historic Preservation

Upper stair gallery from landing
sitting room, looking Southeast

11 of 11