



Lower Dauphin Street Commercial
District Addition
Mobile, Alabama , Mobile County

R. Van Hoof, August, 1980
Mobile Historic Development
Commission

9 N. Conception St., west side
Conception between Dauphin and
St. Francis St. from the east

JAN 5 - 1982

Photo number: #B-1

FEB 19 1982



Lower Dauphin Street Commercial
District Addition
Mobile, Alabama, Mobile County

R. Van Hoof, August, 1980
Mobile Historic Development
Commission

Bienville Square sidewalk in south
west quadrant looking northeast to
fountain in center from the
southwest

Photo number: #B-2

JAN 5 - 1982

FEB 19 1982



Lower Dauphin Street Commercial
District Addition
Mobile, Alabama, Mobile County

Rowena Van Hoof, August, 1980
Mobile Historic Development
Commission

Bienville Square Foundation
from the southeast

Photo number: #B-3

JAN 5 - 1982

FEB 19 1982



Lower Dauphin Street Commercial
District Addition
Mobile, Alabama, Mobile County

Rowena Van Hoof, August, 1980
Mobile Historic Development
Commission

171, 169, 167, 163-65 Dauphin St.
southside Dauphin between St.
Emanuel & Conception St. from the
northwest

Photo number: #B-4

JAN 5 - 1982

FEB 19 1982



Lower Dauphin Street Commercial
District Addition
Mobile, Alabama, Mobile County

Rowena Van Hoof, August, 1980
Mobile Historic Development
Commission

151-51, 155, 157, 159-61, 163-65,
167, 169, 171 Dauphin Street,
southside Dauphin between Concep-
tion and St. Emanuel from the
northeast

JAN 5 - 1982

Photo number: #B-5

FEB 19 1982



Lower Dauphin Street Commercial
District Addition
Mobile, Alabama, Mobile County

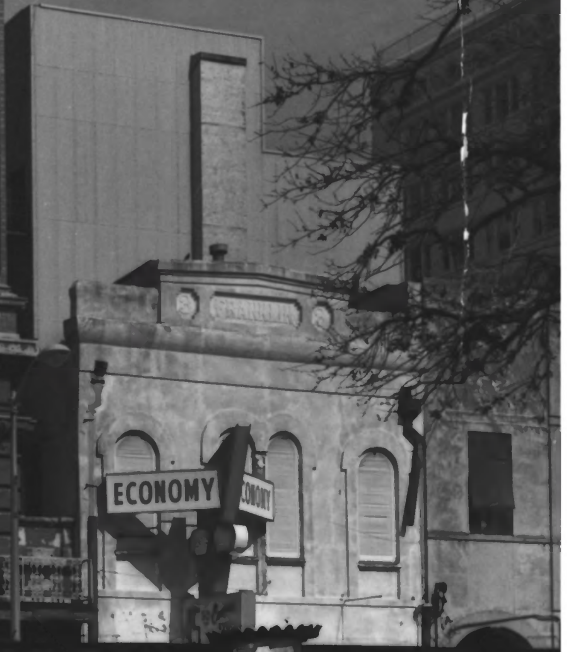
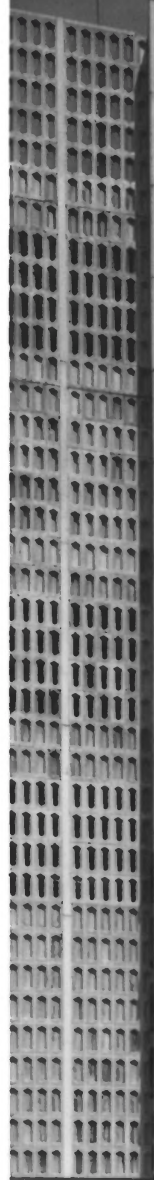
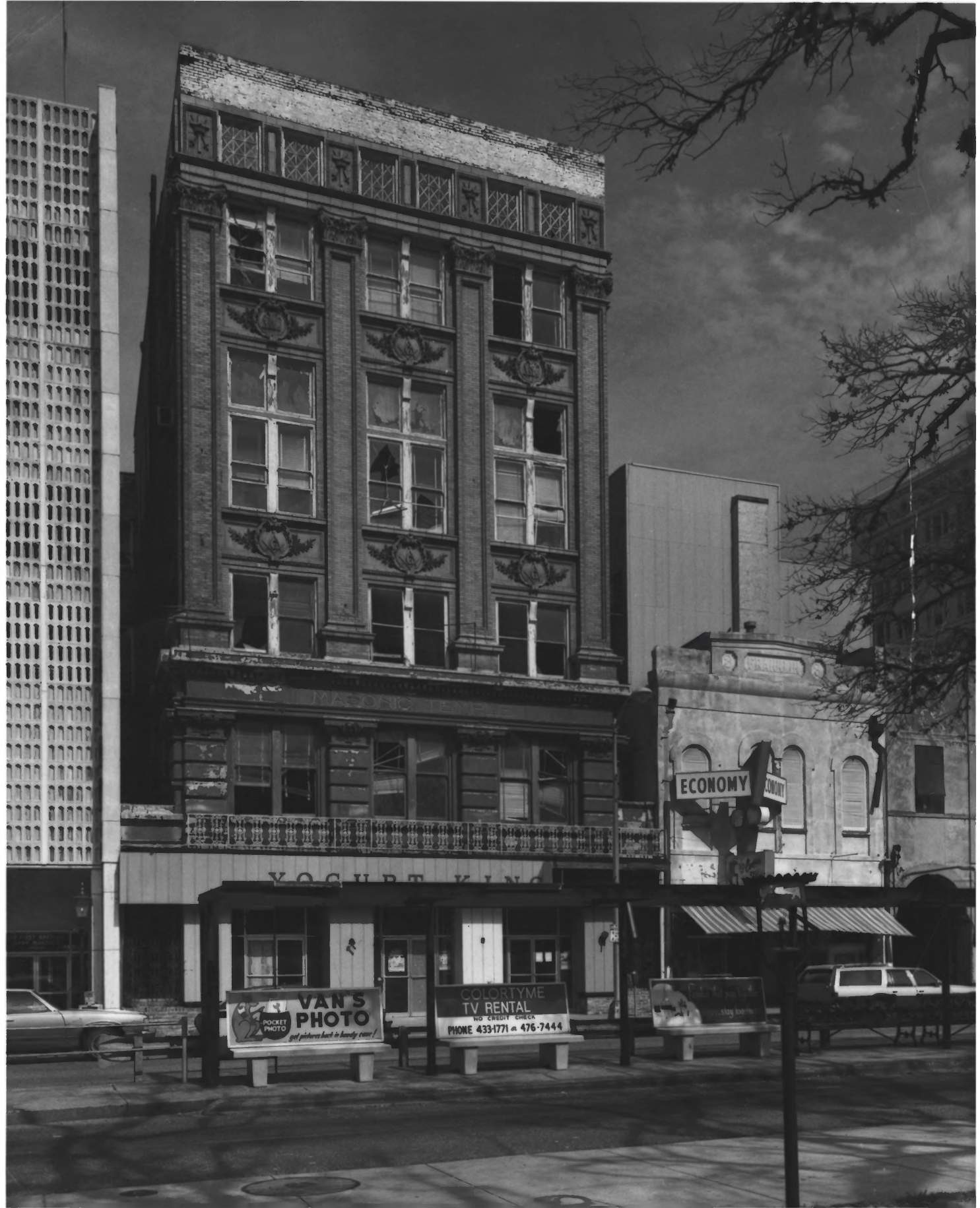
R. Van Hoof, August, 1980
Mobile Historic Development
Commission

110-112 Dauphin, 6, 8 St. Joseph
St. east side St. Joseph between
Dauphin & St. Francis from the
south

JAN 5 - 1982

Photo number: #B-6

FEB 19 1982



VAN'S PHOTO
POCKET PHOTO
get pictures back in handy cases!

COLORTYME TV RENTAL
NO CREDIT CHECK
PHONE 433-1771 or 476-7444

stay local

Lower Dauphin Street Commercial
District Addition
Mobile, Alabama, Mobile County

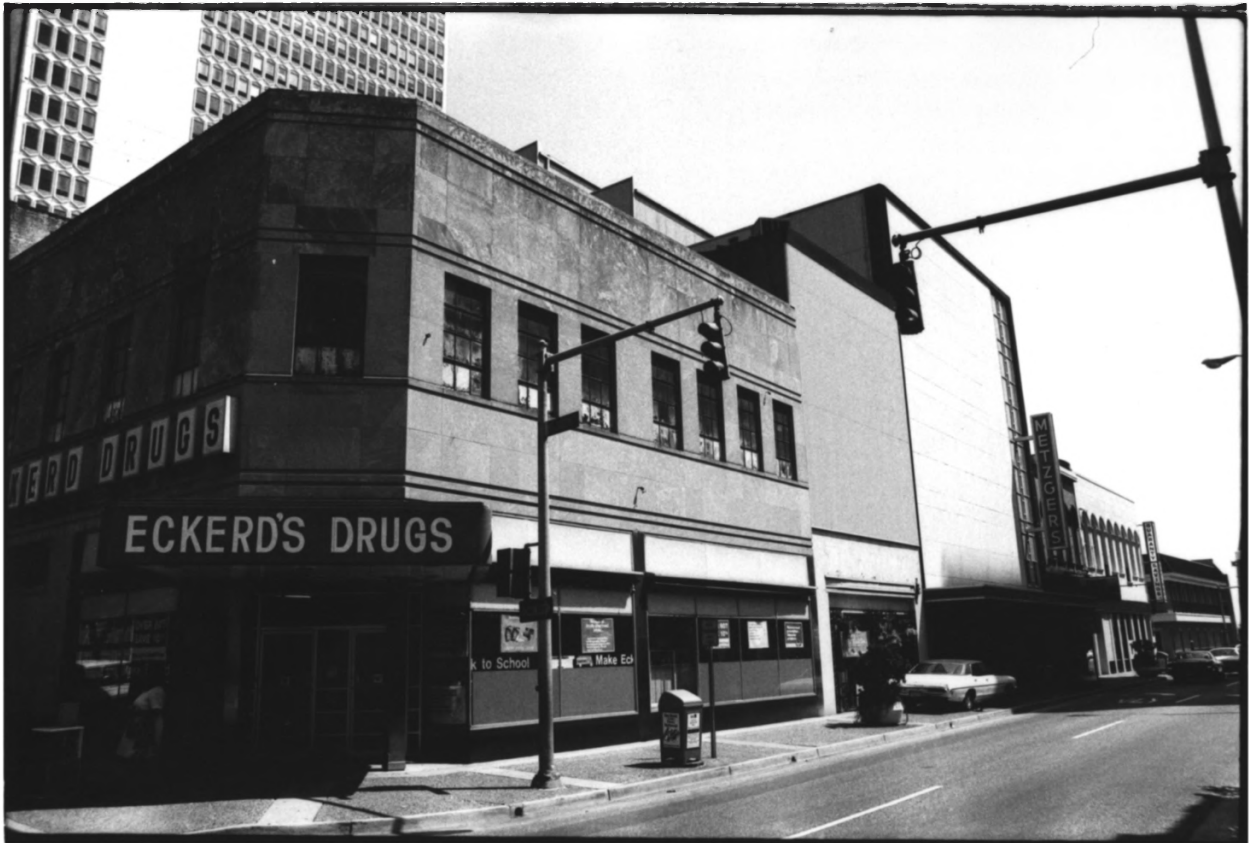
Michael Thomason, April, 1980
USA Phot Archives, Mobile, AL

8 St. Joseph St., Masonic Temple,
e.s. St. Joseph between Dauphin
& St. Francis from the northwest

Photo number: #B-7

JAN 5 - 1982

FEB 19 1982



Lower Dauphin Street Commercial
District

Mobile, Alabama, Mobile County

Rowena Van Hoof, August, 1980
Mobile Historic Development
Commission

110-112, 108, 106, 102 Dauphin St.
northside Dauphin between St.
Joseph & Royal from the southwest

Photo number: #B-8

JAN 5 - 1982

FEB 19 1982

VAN ANTWERP BLDG.

SAYBES

Quality Craft Shoes

Baker's Quality Craft Shoes

HELL SPRING
NETTES 8 1/4 PK



Lower Dauphin Street Commercial
District Addition
Mobile, Alabama, Mobile County

R. Van Hoof, August, 1980
Mobile Historic Development
Commission

105-09, 111, 113, 115-17, 119,
121-23, 125-127 Dauphin St.
southside Dauphin between St.
Emanuel and Royal from the north-
west

JAN 5 - 1982

Photo number: #B-10

FEB 19 1982



Baker's Quality Craft Shoes

Campbell's
CAMPBELL'S PHARMACY
CIGARETTES 15¢ PK

Lower Dauphin Street Commercial
District

Mobile, Alabama, Mobile County

Rowena Van Hoof, August, 1980
Mobile Historic Development
Commission

125-127 Dauphin Street, McCrory
Building, southeast Dauphin
and St. Emanuel from the north-
west

JAN 5 - 1982

Photo number: #B-11

FEB 19 1982



Lower Dauphin Street Commercial
District

Mobile, Alabama, Mobile County

R. Van Hoof, August, 1980

Mobile Historic Development
Commission

101 Dauphin St., Van Antwerp
Building, s.w. Dauphin & Royal
from the northeast

Photo number: #B-12

JAN 5 - 1982

FEB 19 1982



KRESS

KRESS

SAYBES

Important Store
FROM THE HOLLYLAND

ONE WAY

SCOTT STORE

ECKER'S DRUGS

ST JOSEPH

ONE WAY

NO LEFT TURN

SAYBES

Lower Dauphin Street Commercial
District

Mobile, Alabama, Mobile County

Rowena Van Hoof, August, 1980
Mobile Historic Development
Commission

115-117 Dauphin St. facade
of Kress Building, s.s. Dauphin
St. between Royal and St.
Emanuel St., from the northwest

Photo number: #B-13 JAN 5 - 1982
FEB 19 1982



D.G.

COSMOS

NO
PARKING
ANY
TIME

Lower Dauphin Street Commercial
District
Mobile, Alabama, Mobile County

Rowena Van Hoof, August, 1980
Mobile Historic Development
Commission

105-109 Dauphin Street, Conboy
Buildings, s.s. Dauphin between
Royal and St. Emanuel from the
northwest

JAN 5 - 1982

Photo number: #B-14

FEB 19 1982



Lower Dauphin Street Commercial
District

Mobile, Alabama, Mobile County

Rowena Van Hoof, August, 1980
Mobile Historic Development
Commission

1 S. Royal, 73, 75-79 Dauphin St.,
s.e. cor. Dauphin & Royal & s.s.
Dauphin between Royal & Conti from
the northwest

JAN 5 - 1982

Photo number: #B-15

FEB 19 1982



Lower Dauphin Street Commercial
District
Mobile, Alabama, Mobile County

Rowen Van Hoof, August, 1980
Mobile Historic Development
Commission

51, 51, 57 Dauphin St., s.s.
Dauphin between Royal and Water
from the northeast

JAN 5 - 1982

Photo number: #B-16

FEB 19 1982



Lower Dauphin Street Commercial
District

Mobile, Alabama, Mobile County

Rowena Van Hoof, August, 1980
Mobile Historic Development
Commission

2-28 S. Royal Street, west side
between Dauphin & Conti from the
south

JAN 5 - 1982

Photo number: #B-17

FEB 19 1982



KRESS

KRESS

Lower Dauphin Street Commercial
District

Mobile, Alabama, Mobile County

Rowena Van Hoof, August, 1980
Mobile Historic Development
Commission

16-18 S. Royal St. facade of
Kress Building, w.s. Royal
between Dauphin and Conti from
the east

JAN 5 - 1982

Photo number: #B-18

FEB 19 1982



Lower Dauphin Street Commercial
District

Mobile, Alabama, Mobile County

Rowena Van Hoof, August, 1980
Mobile Historic Development
Commission

100-108 Conti St., north side
between Royal and St. Emanuel
from the southwest

JAN 5 - 1982

Photo number: #B-19

FEB 19 1982



FIRST
1/2
HOUR 50¢
150 100
75 25

CAR
PARK

NO
PARKING
ANYTIME

Lower Dauphin Street Commercial
District
Mobile, Alabama, Mobile County

Jan Connelly, Jun, 1980
Mobile Historic Development
Commission

51 St. Emanuel St., German Relief
Hall, s.e. Conti & St. Emanuel
from the north

JAN 5 - 1982

Photo number: #B-20

FEB 19 1982



Lower Dauphin Street Commercial
District
Mobile, Alabama, Mobile County

Jan Connelly, June, 1980
Mobile Historic Development
Commission

5 St. Emanuel St., Fitzgerald
Building, e.s. St. Emanuel
between Dauphin & Conti from
the southwest JAN 5 - 1982

Photo number: #B-21

FEB 19 1982



Lower Dauphin Street Commercial
District

Mobile, Alabama, Mobile County

Rowena Van Hoof, August, 1980
Mobile Historic Development

6-8, 10, 14, 16-18 St. Emanuel St.
westside St. Emanuel between
Dauphin and Conti from the
northeast.

JAN 5 - 1982

Photo number: #B-22

FEB 19 1982



Lower Dauphin Street Commercial
District

Mobile, Alabama, Mobile County

Rowena Van Hoof, August, 1980

Mobile Historic Development
Commission

8-22 St. Emanuel Street, westside
from the south, between Dauphin
& Conti

JAN 5 - 1982

Photo number: #B-23

FEB 19 1982



Lower Dauphin Street Commercial
District
Mobile, Alabama, Mobile County

Jan Connelly, June, 1980
Mobile Historic Development
Commission

14 St. Emanuel Street, Gayfers,
w.s. St. Emanuel St. between
Dauphin & Conti from the north
east
JAN 5 - 1982

Photo number: #B-24

SEP 19 1982



Lower Dauphin Street Commercial
District

Mobile, Alabama, Mobile County

Rowena Van Hoof, August, 1980

Mobile Historic Development
Commission

150 block Conti Street, northside
between St. Emanuel and Conception
from the southeast

JAN 5 - 1982

Photo number: #B-25

FEB 19 1982



Lower Dauphin Street Commercial
District
Mobile, Alabama, Mobile County

Rowena Van Hoof, August, 1980
Mobile Historic Development
Commission

50-56 St. Emanuel St., west side
between Conti and Government from
the northeast

JAN 5 - 1982

Photo number: #B-26

FEB 19 1982



Lower Dauphin Street Commercial
District Addition
Mobile, Alabama, Mobile County

Rowena Van Hoof, August, 1980
Mobile Historic Development
Commission

151-159 Conti Street, southside
between St. Emanuel and Conception
from the northwest JAN 5 - 1982

Photo number: #B-27

FEB 19 1982



Lower Dauphin Street Commercial
District Addition
Mobile, Alabama, Mobile County

Rowena Van Hoof, August, 1980
Mobile Historic Development
Commission

150 block Conti Street, northside
Conti between St. Emanuel and
Conception from the southwest

Photo number: #B-28

JAN 5 - 1982

FEB 19 1982



Lower Dauphin Street Commercial
District, Addition
Mobile, Alabama, Mobile County

Rowena Van Hoof, August, 1980
Mobile Historic Development
Commission

6-22 S. Conception St., west side
between Dauphin & Conti from the
northeast

JAN 5 - 1982

Photo number: #B-29

FEB 19 1982



Lower Dauphin Street Commercial
District, Addition
Mobile, Alabama, Mobile County

Joel Lambert, July 1980
Mobile Historic Development
Commission

6 S. Conception St., Deegan
Building w.s. Conception between
Dauphin & Conti from the east.

Photo number: #B-30

JAN 5 - 1982
FEB 19 1982



Lower Dauphin Street Commercial
District, Addition
Mobile, Alabama, Mobile County

Rowena Van Hoof, August, 1980
Mobile Historic Development
Commission

6-22 S. Conception St., west
side between Dauphin & Conti from
the southeast

JAN 5 - 1982

Photo number: #B-31

FEB 19 1982



Century
21

Lower Dauphin Street Commercial
District, Addition
Mobile, Alabama, Mobile County

Rowena Van Hoof, August, 1980
Mobile Historic Development
Commission

7 S. Joachim St., Chamberlain
Building, e.s. Joachim between
Dauphin & Conti from the south
west **JAN 5 - 1982**

Photo number: #B-32

FEB 19 1982