



Riley Creek Bridge
Belleville, Kansas

Larry Jochim

May 26, 1986

Kansas State Historical Society
South approach looking north

1 of 8



Riley Creek Bridge
Belleville, Kansas
Larry Johnson

May 26, 1986

Kansas State Historical Society
North approach looking south
2 of 8

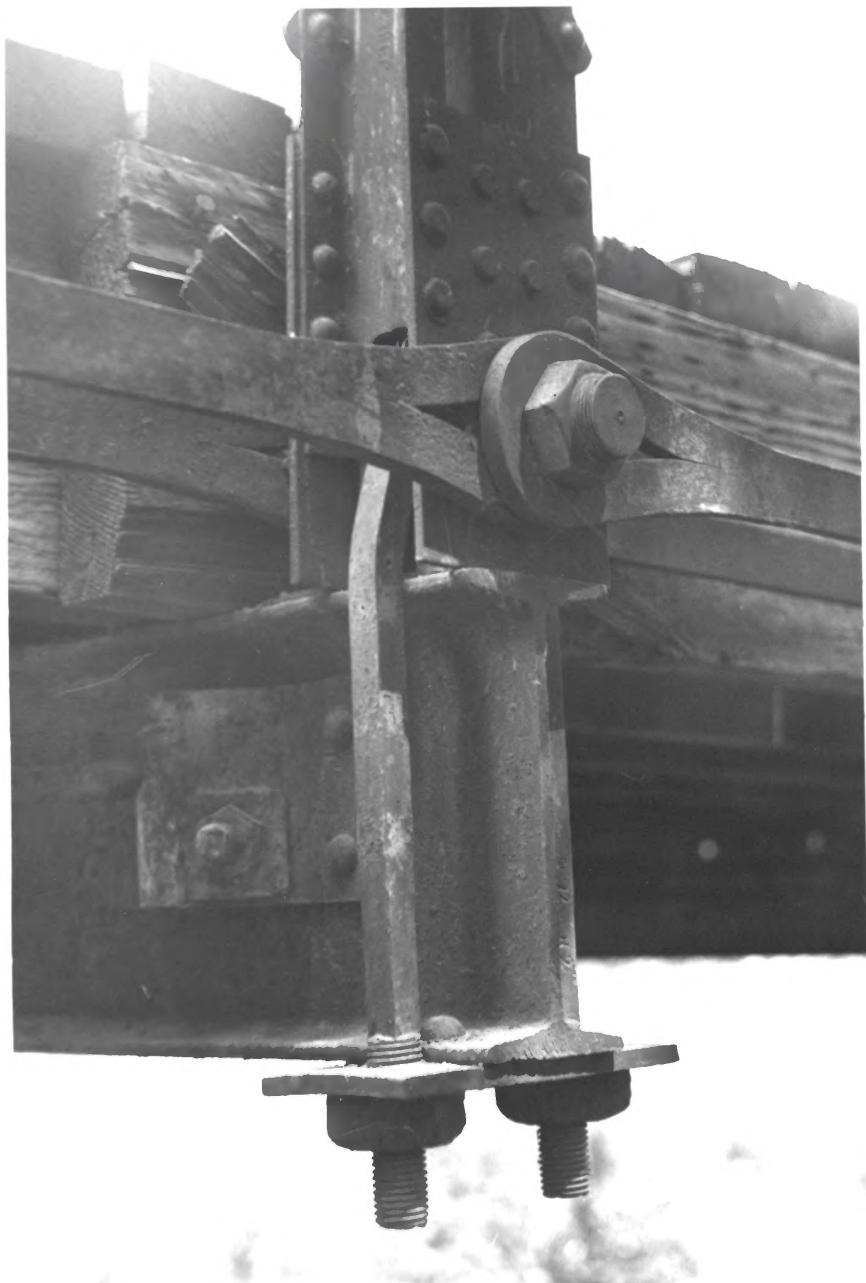


Riley Creek Bridge
Bellville, Kansas

Larry Jochims

May 26, 1986

Kansas State Historical Society
Northrup, looking south
3 of 8



Riley Creek Bridge
Belleville, Kansas
Larry Jenkins

May 22, 1986

Kansas State Historical Society
West side looking east

4 of 8

A black and white photograph showing a close-up of a metal casting. The casting is a long, horizontal bar with a rough, textured surface. In the center, the name "JONES & LAUCHLIN" is stamped in a serif font. The casting is held in place by several bolts or nuts, which are visible as dark, rounded shapes. The background is out of focus, showing some indistinct shapes and light spots.

JONES & LAUCHLIN

Piley Creek Bridge

Bellville, Kansas

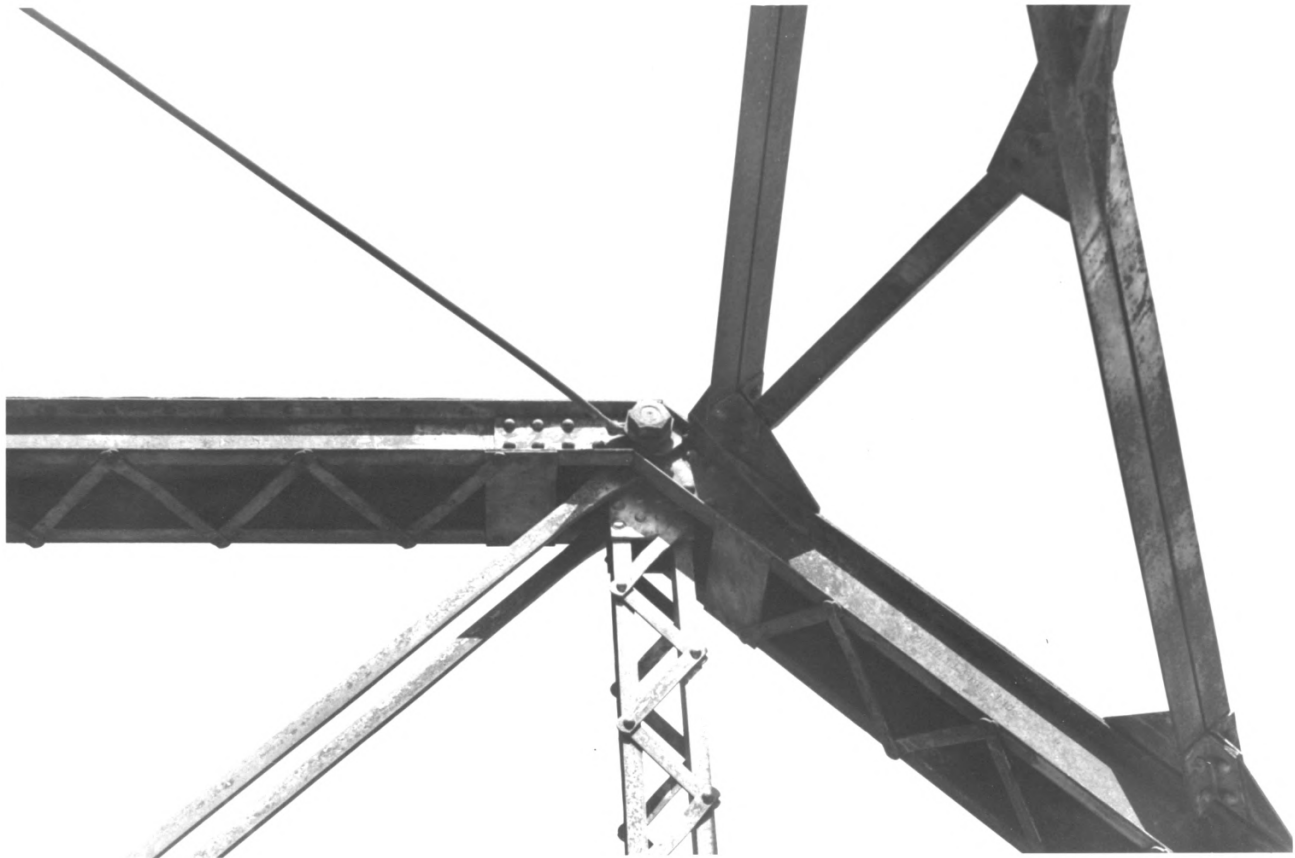
Larry Gehms

May 26, 1986

Kansas State Historical Society

beam detail

5 of 8



Riley Creek Bridge

Bellewille, Kansas

Larry Goelms

May 20, 1986

Kansas State Historical Society

Top Child Connection

6 of 8



Riley Creek Bridge
Belleville, Kansas

Larry Jochnis

May 26, 1986

Kansas State Historical Society
Bottom chord connection

11/18

1899

A. WEGAL

WM BELL

A. W. MILLER

COUNTY

COMMISSIONERS

D. Y. WILSON

COUNTY CLERK

I. C. WARE

SURVEYOR

Riley Creek Bridge

Bellville, Kansas

Larry Johnson

May 10, 1986

Kansas State Historical Society
Buildings & Grounds

8 of 8