



- 1 GILBERT and SAMUEL McKOWN HOUSE
- 2 Gerrardstown, West Virginia
- 3 Frances D. Ruth
- 4 June 1983
- 5 Berkeley County Courthouse, Martinsburg
- 6 Front façade;
camera facing south
- 7 G - 30 #1 of 6


865



- 1 GILBERT and SAMUEL McKOWN HOUSE
- 2 Gerrardstown, West Virginia
- 3 Frances D. Ruth
- 4 June 1983
- 5 Berkeley County Court House, Martinsburg
- 6 Board wall, second floor;
camera facing west
- 7 G - 30 #2 cf6

865E



- 1 GILBERT and SAMUEL MCKOWN HOUSE
- 2 Gerrardstown, West Virginia
- 3 Frances D. Ruth
- 4 June 1983
- 5 Berkeley County Court House, Martinsburg
- 6 Junction of Federal & Victorian balustrades,
second floor; camera facing northeast
- 7 G - 30  #3 of 6

865E



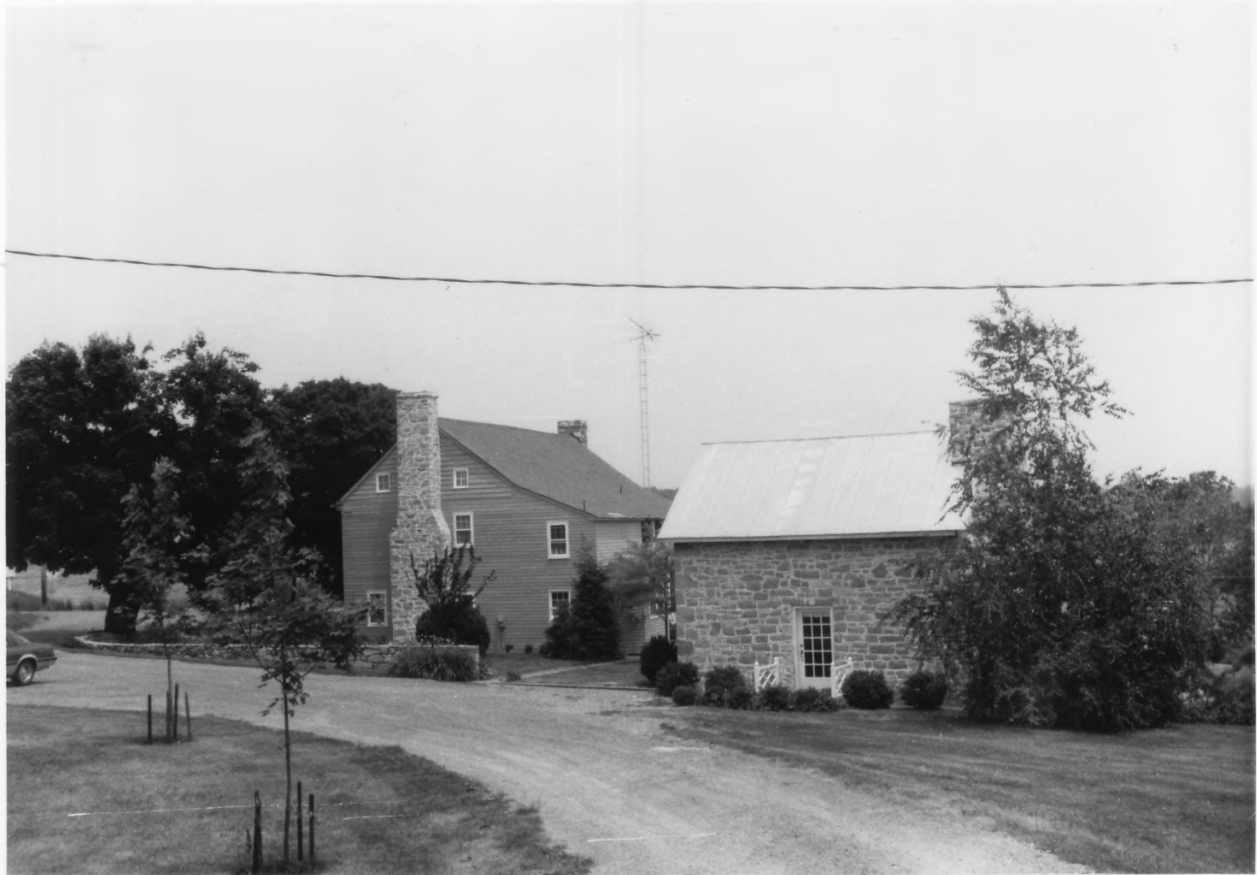
- 1 GILBERT and SAMUEL McKOWN HOUSE
- 2 Gerrardstown, West Virginia
- 3 Frances D. Ruth
- 4 June 1983
- 5 Berkeley County Court House, Martinsburg
- 6 Two-tiered, panelled door cupboard,
second floor; camera facing north
- 7 G - 30 #4 of 6

865E



865E

- 1 GILBERT and SAMUEL McKOWN HOUSE
- 2 Gerrardstown, West Virginia
- 3 Frances D. Ruth
- 4 June 1983
- 5 Berkeley County Court House, Martinsburg
- 6 Fireplace mantel, first floor;
camera facing west
- 7 G - 30 #5 of 6



- 1 GILBERT and SAMUEL McKOWN HOUSE
- 2 Gerrardstown, West Virginia
- 3 Frances D. Ruth
- 4 June 1983
- 5 Berkeley County Court House, Martinsburg
- 6 Stone outbuilding;
camera facing east
- 7 G - 30 ~~██████~~ #6 of 6

1698