

U.S. RUBBER

SIGNAL
AHEAD

Photograph 1

American Hard Rubber Co. (Home woollen Co. - Beacon Falls Rubber Shoe)

Beacon Falls CT

4/84 A. Gilchrist photo

Neg. on file CT Historical Commission

View northeast from Main Street

L to R: Buildings 11, 10, 9, 1, 2, 4



Photograph 2

American Hard Rubber Co. (Home Woollen - Beacon Falls Rubber Shoe Co.)

Beacon Falls CT

4/84 A. Gilchrist photo

Neg. on file CT Historical Commission

Typical interior, Building 2



Photograph 3

American Hard Rubber Company (Home Woollen - Beacon Falls Rubber Shoe)

Beacon Falls CT

4/84 A. Gilchrist photo

Neg. on file CT Historical Commission

Interior, attic, Building Nos. 1 and 2



U.S. RUBBER

Photograph 4

American Hard Rubber Company (Home Woollen - Beacon Falls Rubber Shoe Co.)

Beacon Falls, CT

4/84 A. Gilchrist photo

Negative on file CT Historical Commission

View Southwest of back of Buildings 2, 1 and No. 1 Ell, showing canal and dam



Photograph 5

American Hard Rubber Company (Home Woollen - Beacon Falls Rubber Shoe Co.)

Beacon Falls CT

4/84. A. Gilchrist photo

Neg. on file CT Historical Commission

View, southwest of canal, dam and back of Building 1.

"Dynamo House" at left.



Photograph 6

American Hard Rubber Co. (Home Woollen - Beacon Falls Rubber Shoe Co.)

Beacon Falls CT

4/84 A. Gilchrist photo

Negative on file Ct Historical Commission

"Dynamo House" attic interior



Photograph 7

American Hard Rubber - (Home Woollen - Beacon Falls Rubber Shoe Co.)

Beacon Falls CT

4/84 A. Gilchrist photo

Negative on file Ct Historical Commission

View east of front, looking across bridge over Naugatuck River

L to R: Buildings 11, 16, 9, 10 (partially obscured), 1, 2 (behind bridge)



Photograph 8

American Hard Rubber Co. Home Woollen - Beacon Falls Rubber Shoe Co.)

Beacon Falls CT

4/84 A. Gilchrist photo

Negative on file CT Historical Commission

Office (Building No. 10), front



UNIROYAL
U.S. RUBBER

↑
↗
KEEP
RIGHT

NO
LEFT
TURN
FRONT
WAY

Photograph 9

American Hard Rubber Co. (Home Woollen Co. - Beacon Falls Rubber Shoe Co.)

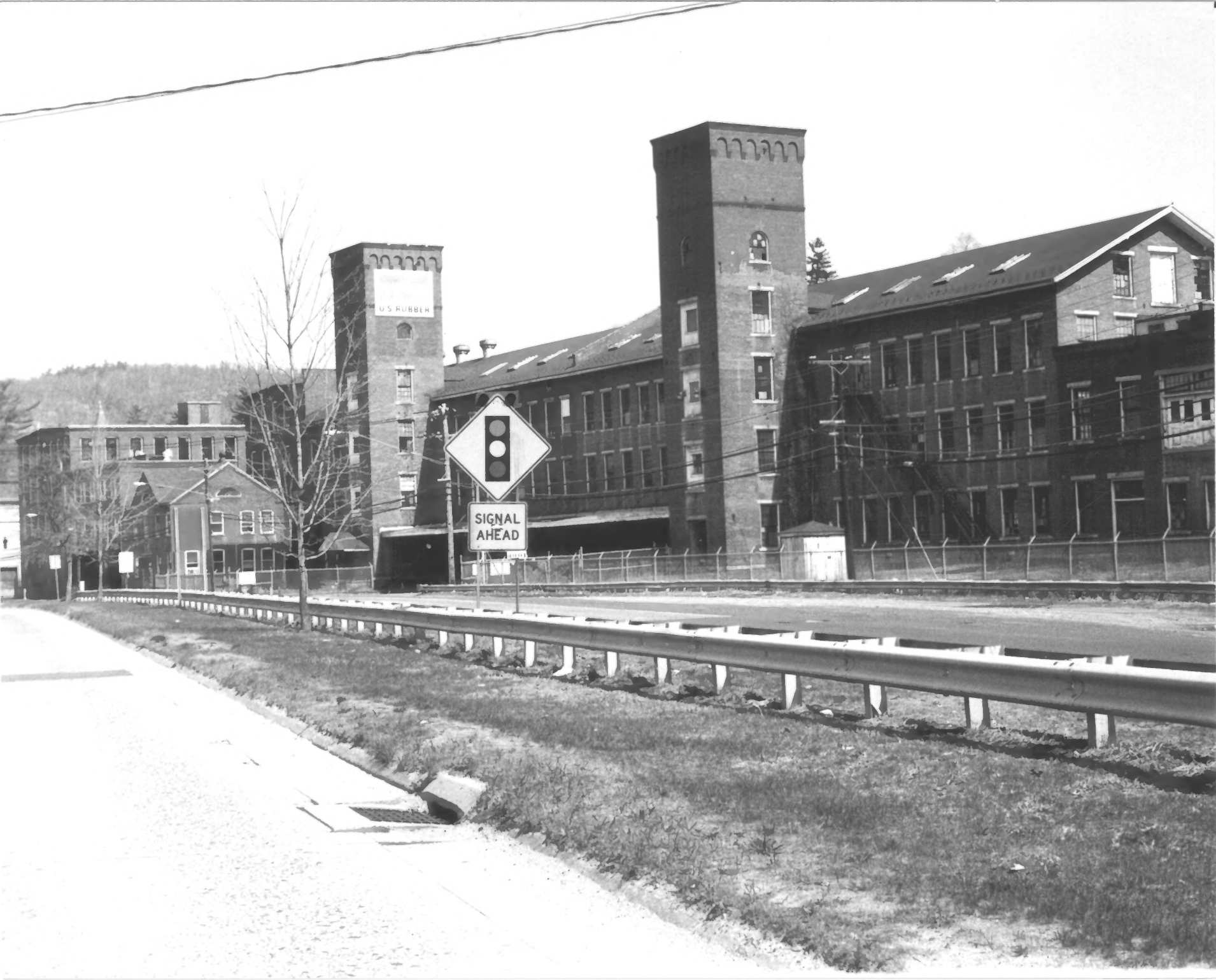
Beacon Falls CT

4/84 A. Gilchrist photo

Negative on file CT Historical Commission

View southeast of front, across Main Street

L to R: Buildings 13, 12, 11, 16, 10, towers, 4 and 7



U.S. RUBBER

SIGNAL
AHEAD

Photograph 1

American Hard Rubber Co. (Home woollen Co. - Beacon Falls Rubber Shoe)

Beacon Falls CT

4/84 A. Gilchrist photo

Neg. on file CT Historical Commission

View northeast from Main Street

L to R: Buildings 11, 10, 9, 1, 2, 4



Photograph 2

American Hard Rubber Co. (Home Woollen - Beacon Falls Rubber Shoe Co.)

Beacon Falls CT

4/84 A. Gilchrist photo

Neg. on file CT Historical Commission

Typical interior, Building 2



Photograph 3

American Hard Rubber Company (Home Woollen - Beacon Falls Rubber Shoe)

Beacon Falls CT

4/84 A. Gilchrist photo

Neg. on file CT Historical Commission

Interior, attic, Building Nos. 1 and 2



U.S. RUBBER

Photograph 4

American Hard Rubber Company (Home Woollen - Beacon Falls Rubber Shoe Co.)

Beacon Falls, CT

4/84 A. Gilchrist photo

Negative on file CT Historical Commission

View Southwest of back of Buildings 2, 1 and No. 1 Ell, showing canal and dam



Photograph 5

American Hard Rubber Company (Home Woollen - Beacon Falls Rubber Shoe Co.)

Beacon Falls CT

4/84. A. Gilchrist photo

Neg. on file CT Historical Commission

View, southwest of canal, dam and back of Building 1.

"Dynamo House" at left.



Photograph 6

American Hard Rubber Co. (Home Woollen - Beacon Falls Rubber Shoe Co.)

Beacon Falls CT

4/84 A. Gilchrist photo

Negative on file Ct Historical Commission

"Dynamo House" attic interior



Photograph 7

American Hard Rubber - (Home Woollen - Beacon Falls Rubber Shoe Co.)

Beacon Falls CT

4/84 A. Gilchrist photo

Negative on file Ct Historical Commission

View east of front, looking across bridge over Naugatuck River

L to R: Buildings 11, 16, 9, 10 (partially obscured), 1, 2 (behind bridge)



Photograph 8

American Hard Rubber Co. Home Woollen - Beacon Falls Rubber Shoe Co.)

Beacon Falls CT

4/84 A. Gilchrist photo

Negative on file CT Historical Commission

Office (Building No. 10), front



NO LEFT TURN
FRONT WAY

↑
KEEP RIGHT

UNIROYAL
U.S. RUBBER

Photograph 9

American Hard Rubber Co. (Home Woollen Co. - Beacon Falls Rubber Shoe Co.)

Beacon Falls CT

4/84 A. Gilchrist photo

Negative on file CT Historical Commission

View southeast of front, across Main Street

L to R: Buildings 13, 12, 11, 16, 10, towers, 4 and 7