



THOMAS' METHODIST EPISCOPAL CHAPEL  
ROUTE 206, CHAPELTOWN VICINITY  
WEST DOVER HUNDRED; KENT COUNTY, DELAWARE

ROBIN K. BODO, PHOTOGRAPHER; 8/93

VIEW: FACADE AND EAST ELEVATION, FACING SW

PHOTO 1 OF 8





GOSPEL  
HOLINESS CHAPEL  
-SERVICES-  
SUNDAY SCHOOL 10:00 AM  
WORSHIP 10:30 AM  
BIBLE STUDY 7:00 PM  
WEL COME  
100 N W 100 W

WELCOME

THOMAS' METHODIST EPISCOPAL CHAPEL

ROUTE 206, CHAPELTOWN VICINITY

WEST DOVER HUNDRED, KENT COUNTY, DELAWARE

STEPHEN DELSORDO, PHOTOGRAPHER 6/92

NEG: DELAWARE STATE HISTORIC PRESERVATION OFFICE

VIEW: FACADE AND EAST ELEVATION, FACING SW

PHOTO 2 OF 8





THOMAS' METHODIST EPISCOPAL CHAPEL

ROUTE 206, CHAPELTOWN VICINITY

WEST DOVER HUNDRED, KENT COUNTY, DELAWARE

ROBIN K. BODO, PHOTOGRAPHER; 3/93

NEG: DELAWARE STATE HISTORIC PRESERVATION OFFICE

VIEW: EAST ELEVATION, FACING WEST

PHOTO 3 OF 8



THOMAS' METHODIST EPISCOPAL CHAPEL

ROUTE 206, CHAPELTOWN VICINITY

WEST DOVER HUNOREO, KENT COUNTY, DELAWARE

ROBIN K. BODO, PHOTOGRAPHER; 8/93

NEG: DELAWARE STATE HISTORIC PRESERVATION OFFICE

VIEW: REAR AND WEST ELEVATIONS, FACING NE

PHOTO 4 OF 8



JESUS NEVER FAILS

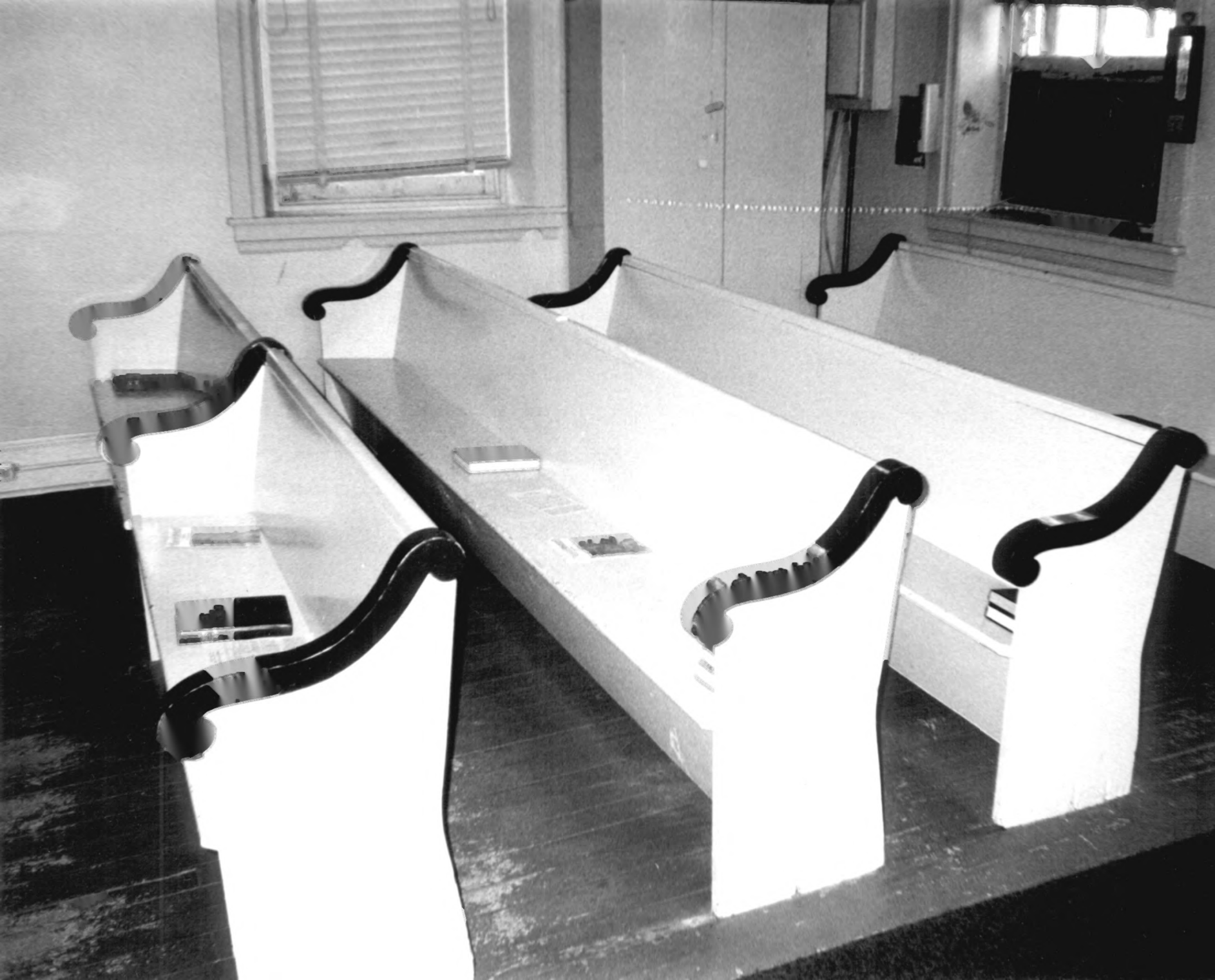


SUNDAY SCHOOL

ATTENDANCE TODAY	7
ATTENDANCE LAST WEEK	9
TOTAL	10075
DIFFERENCE LAST WEEK	375









THOMAS' METHODIST EPISCOPAL CHAPEL

ROUTE 206, Chapeltown Vicinity

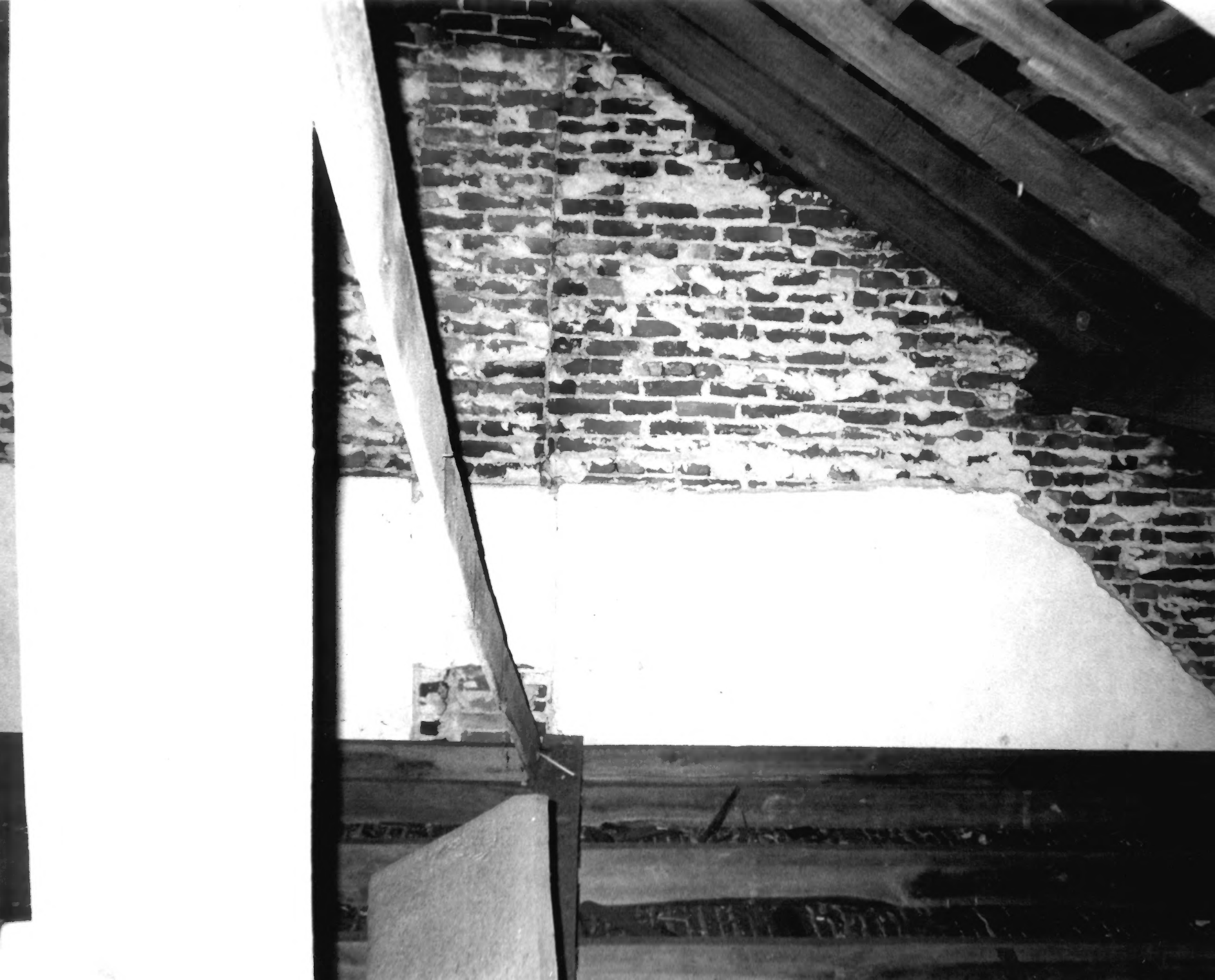
WEST DOVER HUNORED, KENT COUNTY, DELAWARE

ROBIN K. BODO; PHOTOGRAPHER; 8/93

NEG: DELAWARE STATE HISTORIC PRESERVATION OFFICE

VIEW: INTERIOR, PEWS; FACING WEST

PHOTO 6 OF 8



1. The first part of the document discusses the importance of maintaining accurate records of all transactions and activities. It emphasizes that proper record-keeping is essential for transparency and accountability, particularly in financial reporting and compliance with regulatory requirements. The text notes that clear documentation helps in identifying trends, detecting anomalies, and providing a clear audit trail for stakeholders.

2. The second section focuses on the role of technology in enhancing data management and analysis. It highlights how modern software solutions can streamline data collection, storage, and processing, reducing the risk of human error and improving the efficiency of operations. The document suggests that investing in robust IT infrastructure is crucial for organizations looking to scale their operations and maintain a competitive edge in a digital marketplace.

3. The third part of the document addresses the challenges of data security and privacy. It discusses the increasing frequency of cyber threats and the need for comprehensive security protocols to protect sensitive information. The text recommends implementing strong encryption, access controls, and regular security audits to ensure that data remains confidential and intact. Additionally, it stresses the importance of educating employees about data security best practices to create a culture of awareness and vigilance.

4. The final section discusses the importance of data governance and compliance. It outlines the need for clear policies and procedures that define roles and responsibilities for data management across the organization. The document also touches upon the evolving regulatory landscape, particularly regarding data protection laws, and advises organizations to stay informed and proactive in ensuring they meet all applicable legal requirements. This section concludes by reinforcing the idea that effective data management is a continuous process that requires ongoing attention and adaptation to changing circumstances.





