



Calumet Historic District
Area bounded by Pine Street on
north, Cambria, Caledonia, and
Tamarack Streets on the east,
Columbia and E Streets on the
south; and Mine, Sixth, and
Eleventh Streets on the west

Photo No. 1

By: Ralph J. Christian, AASLH

Negative at: HSS, HCRS

Date: August 1979

View: From south, showing worker
housing and skyline of Red Jacket
(Calumet) as viewed from Sixth
Street.



Calumet Historic District

Area bounded by Pine Street on north, Cambria, Caledonia, and Tamarack Streets on the east, Columbia and E Streets on the south; and Mine, Sixth, and Eleventh Streets on the west

Photo No. 2

By: Ralph J. Christian, AASLH

Negative at: HSS, HCRS

Date: August 1979

View: From southwest, showing worker housing along Hecla Street.



Calumet Historic District
Area bounded by Pine Street on
north, Cambria, Caledonia, and
Tamarack Streets on the east,
Columbia and E Streets on the
south; and Mine, Sixth, and
Eleventh Streets on the west

Photo No. 3

By: Ralph J. Christian, AASLH

Negative at: HSS, HCRS

Date: August 1979

View: From northeast, showing
front (north) facades and east
ends of worker housing on Cedar
Street.



Calumet Historic District
Area bounded by Pine Street on
north, Cambria, Caledonia, and
Tamarack Streets on the east,
Columbia and E Streets on the
south; and Mine, Sixth, and
Eleventh Streets on the west

Photo No. 4

By: Ralph J. Christian, AASLH

Negative at: HSS, HCRS

Date: August 1979

View: From northeast, showing
worker housing on Temple and
Sixth Streets.



Calumet Historic District
Area bounded by Pine Street on
north, Cambria, Caledonia, and
Tamarack Streets on the east,
Columbia and E Streets on the
south; and Mine, Sixth, and
Eleventh Streets on the west

Photo No. 5

By: Ralph J. Christian, AASLH

Negative at: HSS, HCRS

Date: August 1979

View: From northeast, showing
front (east) facade and north end
of worker house at 597-99
Waterworks Street.



Calumet Historic District
Area bounded by Pine Street on
north, Cambria, Caledonia, and
Tamarack Streets on the east,
Columbia and E Streets on the
south; and Mine, Sixth, and
Eleventh Streets on the west

Photo No. 6

By: Ralph J. Christian, AASLH

Negative at: HSS, HCRS

Date: August 1979

View: From northeast, showing
front (east) facade and north end
of residence at 305 Tamarack Street
in Laurium.



Calumet Historic District

Area bounded by Pine Street on north, Cambria, Caledonia, and Tamarack Streets on the east, Columbia and E Streets on the south; and Mine, Sixth, and Eleventh Streets on the west

Photo No. 7

By: Ralph J. Christian, AASLH

Negative at: HSS, HCRS

Date: August 1979

View: From east, showing Red Jacket (Calumet) commercial area and St. Paul the Apostle Church along Oak Street as viewed from Fifth Street.



Calumet Historic District
Area bounded by Pine Street on
north, Cambria, Caledonia, and
Tamarack Streets on the east,
Columbia and E Streets on the
south; and Mine, Sixth, and
Eleventh Streets on the west

Photo No. 8

By: Ralph J. Christian, AASLH

Negative at: HSS, HCRS

Date: August 1979

View: From southwest, showing
front (west) facades and south ends
of Calumet Theatre and Town Hall
and Shute's Bar on Sixth Street in
Red Jacket (Calumet).



AUTO MALL
CENTER
JEWELL, KS

Coca-Cola
SODA
SANDWICH
BAR

MO-203

Calumet Historic District

Area bounded by Pine Street on north, Cambria, Caledonia, and Tamarack Streets on the east, Columbia and E Streets on the south; and Mine, Sixth, and Eleventh Streets on the west

Photo No. 9

By: Ralph J. Christian, AASLH

Negative at: HSS, HCRS

Date: August 1979

View: From south, showing commercial structures on Fifth Street near Pine Street in Red Jacket (Calumet).



Calumet Historic District
Area bounded by Pine Street on
north, Cambria, Caledonia, and
Tamarack Streets on the east,
Columbia and E Streets on the
south; and Mine, Sixth, and
Eleventh Streets on the west

Photo No. 10

By: Ralph J. Christian, AASLH

Negative at: HSS, HCRS

Date: August 1979

View: From northeast, showing
front (east) facades and north
ends of commercial buildings on
Hecla Street in Laurium.

MON-FRI
9:30 to 5:00 MON-FRI 5:15
COUNTRY CRAFTY GIFTS
CREATIONS



(3)

View no. on 5th St., west side ~~Putland to Oak~~ Putland to Oak & beyond



①

D & N Bank - 330 5th St., Calumet



③

Calumet Church - view No. From Henry St.



(4)

6th St. - West side between Oak & Elm



Portland St. - Ste. Maria Church & Yellow Jacket houses



Column Foundation, 6th St. betw. Oak & Elm



Subsidized housing, Agassiz Park, Calumet



View north of Decla location buildings, C&H Mines



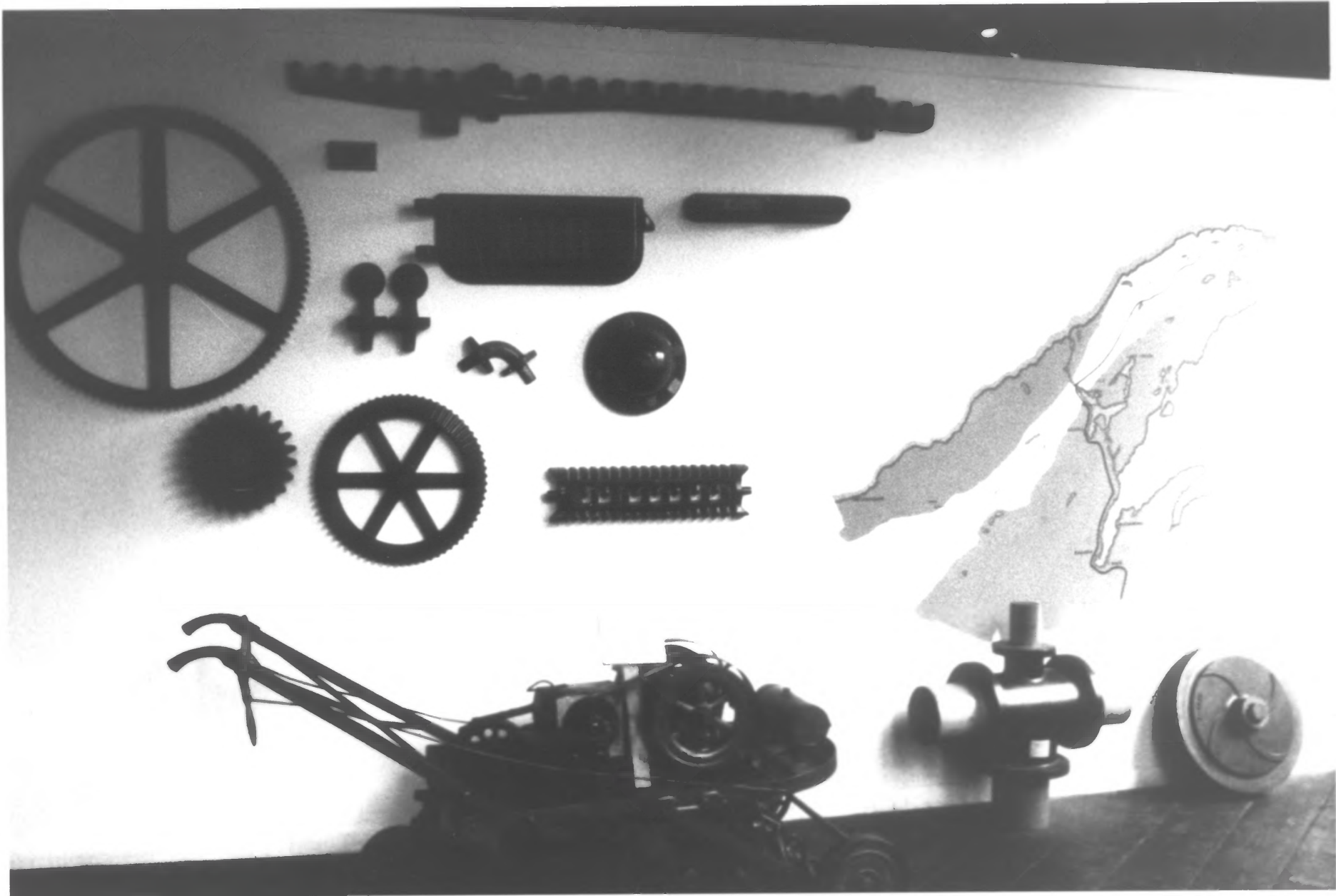
View from St. Anne's tower NW toward St. Paul's. Shows Gth between Scott & Portland.



View no. on 5th from St. Anne's tower



Interior view, Carpenter Museum



Interior view, Coppertown Museum

1970



(2) West side of 5th St., Columbus, looking south from between Elm & Oak



(3)

View so. on 5th St., west side, betw. Portland & Scott



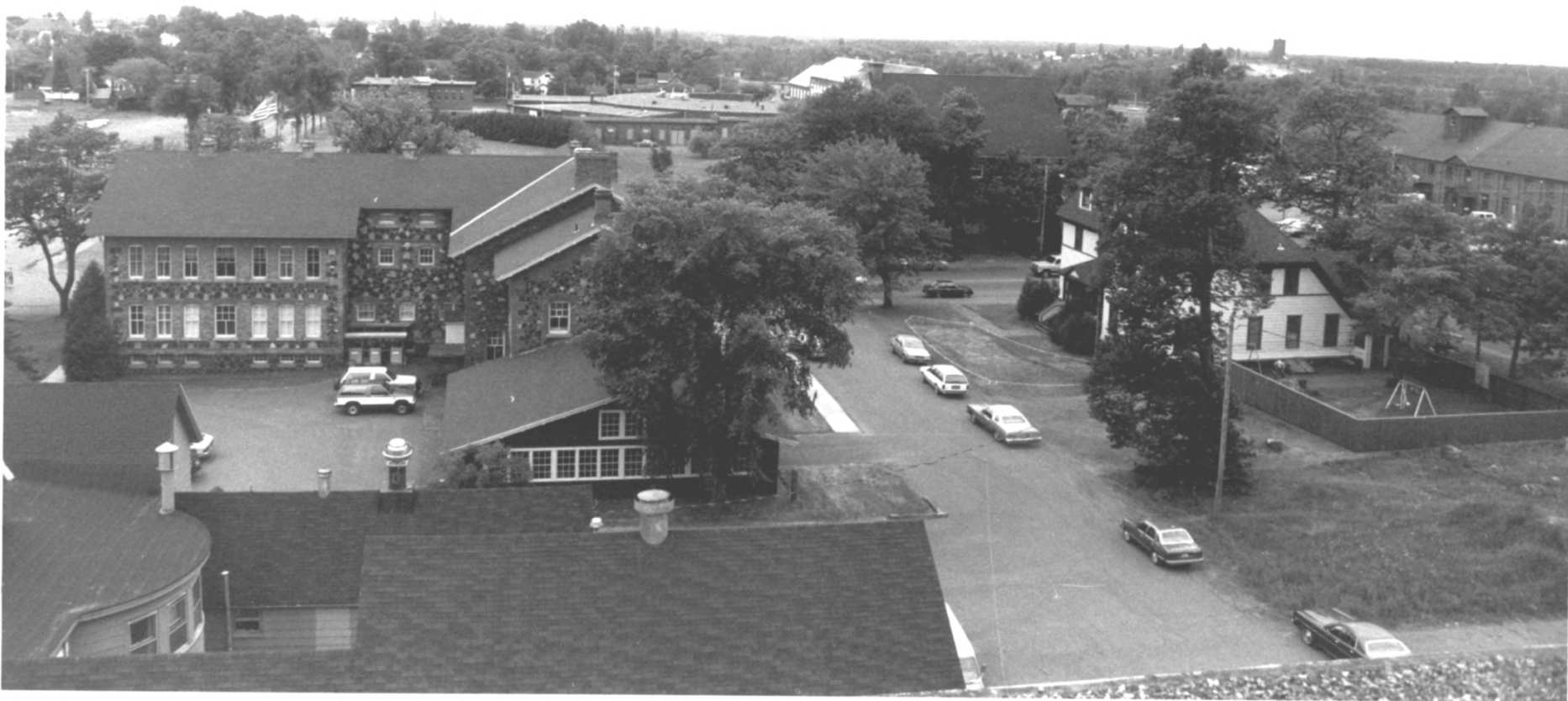
View So. on 5th, east side betw. Posters & Scott



7

6th St., east side, view So. between Calumet Theater (Elm) & Oak





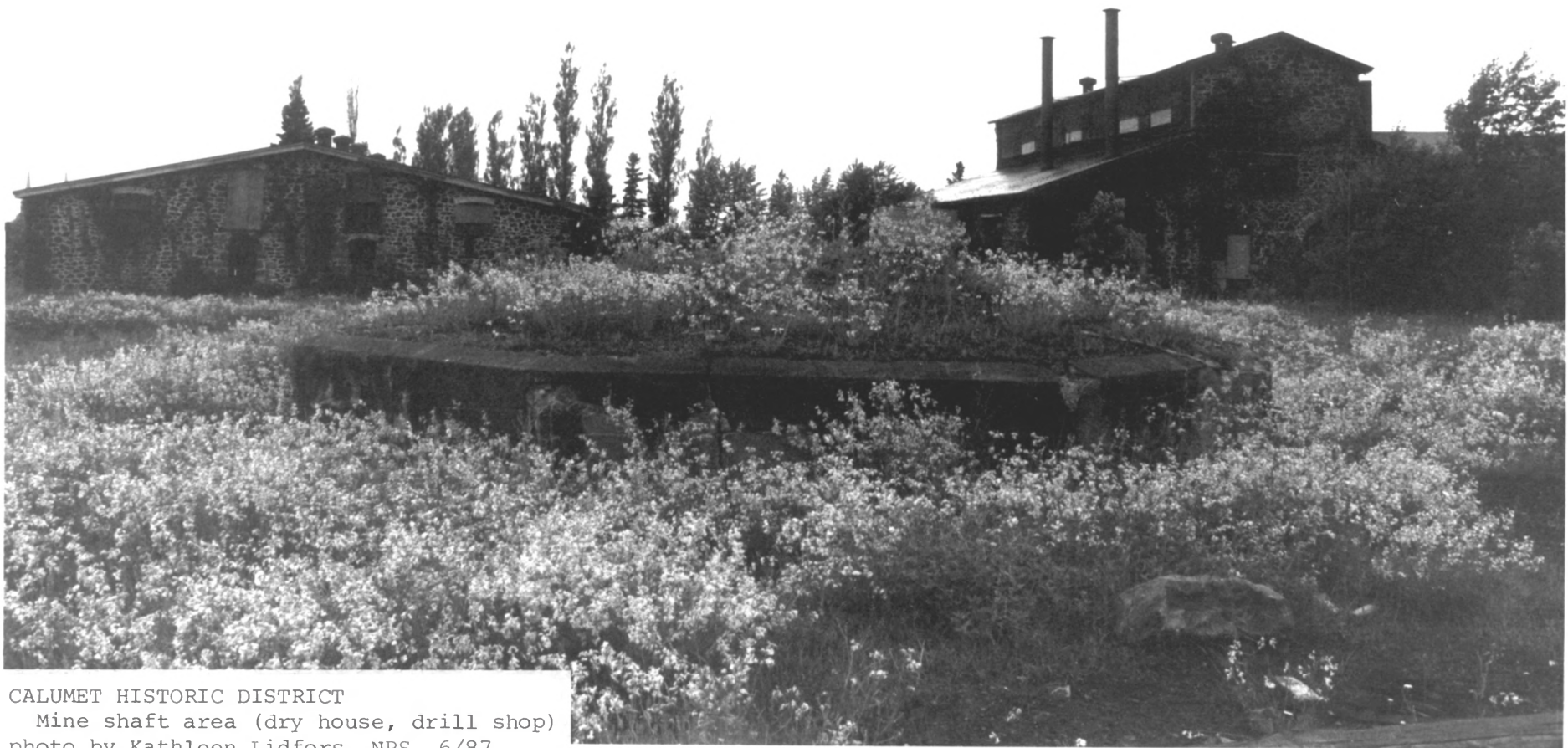


2



CALUMET HISTORIC DISTRICT
Company library & general offices
photo by Kathleen Lidfors, NPS 6/87





CALUMET HISTORIC DISTRICT
Mine shaft area (dry house, drill shop)
photo by Kathleen Lidfors, NPS 6/87



Coppertown-USA
museum-visitor center





CALUMET HISTORIC DISTRICT
Fifth Street & Red Jacket Road
photo by Kathleen Lidfors, NPS, 6/87



COPPER
WORLD
COPPER GIFTS

Dei's
ANTIQUES

Dei's
ANTIQUES

Dei's
Copper Art

CHEVROLET
OLDSMOBILE
Cadillac
PUB







KILPELA'S

ZENITH

FREE
PARKING

KILPELA'S
5PC BEDROOM SET \$679
PINE BUNKBED \$329

Holmes JEWELERS

M.D. MEIER
DENTIST









CALUMET HISTORIC DISTRICT

Agassiz Park

photo by Kathleen Lidfors, NPS 6/87



CALUMET HISTORIC DISTRICT

SW corner of Sixth and Oak Streets

photo by Kathleen Lidfors, NPS 6/87



CALUMET HISTORIC DISTRICT

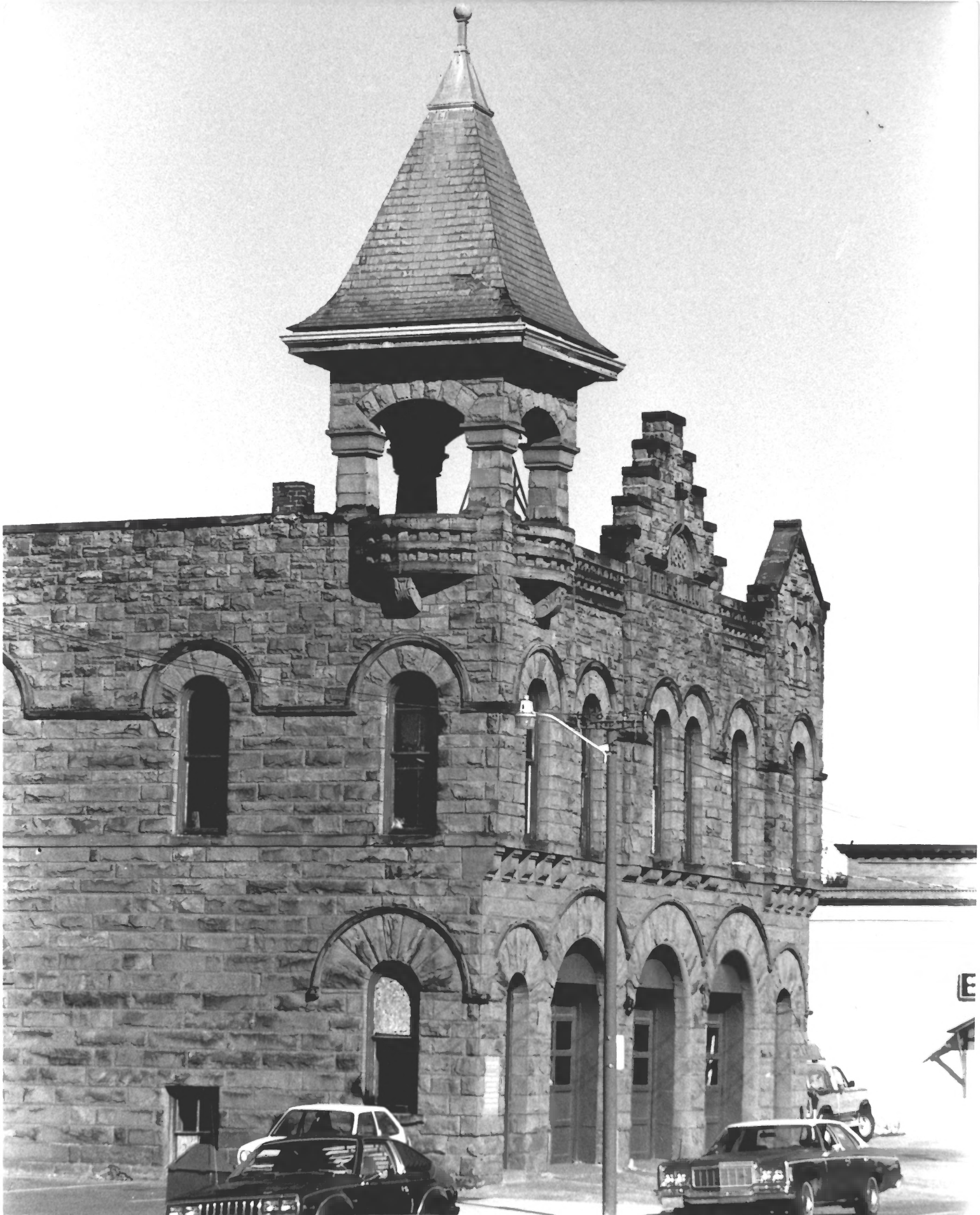
Calumet Village Office, Calumet Theater
photo by Kathleen Lidfors, NPS 6/87





SHUTE'S
1890
BAR

SHUTE'S
1890
BAR









- A.—High School House
- B.—Post Office
- C.—Mining Hospital
- D.—St. Patrick Hall
- E.—Congregational Church
- F.—Pineau Lutheran Ch.
- G.—German do do
- H.—Methodist Ep. do

- 1. Calumet Engine House
- 2. do Boiler do
- 3. do Pump do
- 4. do Water do
- 5. do Compressor
- 6. do Iron House
- 7. do Blacksmith Shop
- 8. do Dry House
- 9. Calumet & Hecla Water Works
- 10. Pop & Root Beer Fact., Jas. Phillips, Prop.
- X. do do do

CALUMET HECLA & RED JACKET MICH.

1881.

Population 7500

PREP. BY G. W. BROWN, PHILADELPHIA, PA.

DESIG. & ENGRAV. BY J. W. BROWN, N.Y.

- 12. Hecla Engine House
- 13. do Boiler do
- 14. do Wind do
- 15. do Water do
- 16. do Dry do
- 17. do Blacksmith Shop
- 18. do Carpenter do
- 19. do Machine do
- 20. Fire Engine House, Hecla
- 21. Mineral Range R. S. Depot
- 22. Lumber Yard, Theo. M. Lyon, Prop.

- 23.—Norwegian & Swedish Lutheran Church
- 24.—Roman Catholic Church
- 25.—Parish House, F. W. Gooding, Prop.
- 26.—Anglo American House, T. Carlton, Prop.
- 27.—German do do
- 28.—Commercial do
- 29.—Calumet Hotel
- 30.—Bear Hill Grounds

TRADE OF CALUMET
JUN 2 - 1881



TAMARACK

RED JACKET

FROM GALUMET

M STARK PHOTO BY ISL

WATER LEVEL LACK 130000 HIGH





Reeder
Spartan Falls





