



W.T.E. Wilson HOMESTEAD  
70300 CAMP FOLK ROAD  
SISTERS, OR 97759

DESCHUTES COUNTY  
MICHAEL HOUSER  
FEB 10, 1997

KATHY DEGGENDORFER  
67809 CLOVERDALE ROAD  
SISTERS, OR 97759

EAST FACADE

1 OF 26



W.T.E. Wilson HOMESTEAD

70300 CAMP POLK ROAD

SISTERS, ON 97759

DASCRIPTUS COUNTY

MICHAEL HOUSER

FEB 10, 1997

KATHY DEGGENDORFER

67809 CLOVERDALE ROAD

SISTERS, ON 97759

WEST FACADE

2 OF 26





W.T.E. Wilson HOMESTEAD

70300 CAMP POIK ROAD

SISTERS, OR 97759

WASCO COUNTY

MICHAEL HOUSEN

FEB 10, 1997

KATHY DEGGENDORFER

67809 CLOVERDALE ROAD

SISTERS, OR 97759

NORTH FACADE

3 OF 26



W.T.E Wilson HOMESTEAD  
20300 CAMP POIK ROAD  
SISTENS, OR 97759  
TASCUMAS COUNTY

MICHAEL HOUSER  
FEB 10, 1997

KATHY DEGENDOFFER  
67809 CLOVERDALE ROAD  
SISTENS, OR 97759  
SOUTH FACADE

4 OF 26





W.T.E Wilson HOMESTEAD

70300 CAMP POLK ROAD

SISTENS, OR 92759

DESCHUTES COUNTY

MICHAEL HOUSE

FEB 10, 1995

KATHY DEGGENDORFER

67809 CLOVENALE ROAD

SISTENS, OR 92759

SOUTH FACADE

5 OF 26



W. T. E. Wilson HOMESTEAD

70300 CAMP POIK ROAD

SISTERS ON 97759

DASCHUMS COUNTY

MICHAEL HOUSER

FEB 10, 1997

KATHY DEGGENDORFER

67801 CLOVENALE ROAD

SISTERS ON 97759

WEST FACADE

6 OF 26

(040)



W.T.E. Wilson HOMESTEAD

70300 CAMP POIK ROAD

SISTERS, ON 97759

WASCO COUNTY

MICHAEL HOUSER

FEB 10, 1997

KATHY DEGGENDORFER

67809 CLOVERDALE ROAD

SISTERS, ON 97759

PORCH DETAIL (EAST FACADE)

7 OF 26





W.T.E. Wilson HOMESTEAD

20300 CAMP POIK ROAD

SISTERS, ON 97759

TRASCURAS COUNTY

MICHAEL HOUSER

FEB 10, 1997

KATHY DEGGENDORFER

67809 CLOVERDALE ROAD

SISTERS, ON 97759

WEST FACADE DETAIL

8 OF 26



W.T.E. Wilson HOMESTEAD

70300 CAMP POIK ROAD

SISTERS, ON 97759

TRASCUTAS COUNTY

MICHAEL HOUSER

FEB 10, 1997

040)

KATHY DEGGENDORFER

67809 CLOVERDALE ROAD

SISTERS, ON 97759

LIVING ROOM

9 OF 26



W.T.E Wilson HOMESTEAD

70300 CAMP POLK ROAD  
SISTERS, ON 97759

MASCHEWAS COUNTY  
MICHAEL HOUSER  
FEB 10, 1997

KATHY DEGGENDORFER  
67809 CLOVERDALE ROAD  
SISTERS, ON 97759

KITCHEN

10 OF 26





W.T.E. Wilson HOMESTEAD

70300 CAMP POIK ROAD

SISTERS, OR 97759

DESCHEMUS COUNTY

MICHAEL HOUSER

FEB 10, 1997

KATHY DEGGENDORFER

67809 CLOVENDALE ROAD

SISTERS, OR 97759

HALL WAY

11 OF 26

2000-03-26 0400



W.T.E. Wilson HOMESTEAD

20300 CAMP POIK ROAD

SISTERS, ON 97759

WASHINGTON COUNTY

MICHAEL HOUSER

FEB 10, 1997

(040)

KATHY DEGEN DOFFER

67809 CLOVERDALE ROAD

SISTERS, ON 97759

DINING ROOM

12 OF 26



W.T.E. Wilson HOMESTEAD

70300 CAMP POIK ROAD

SISTERS, OR 97759

DAWSON COUNTY

MICHAEL HOUSER

FEB 10, 1997

KATHY DEGGENDORFER

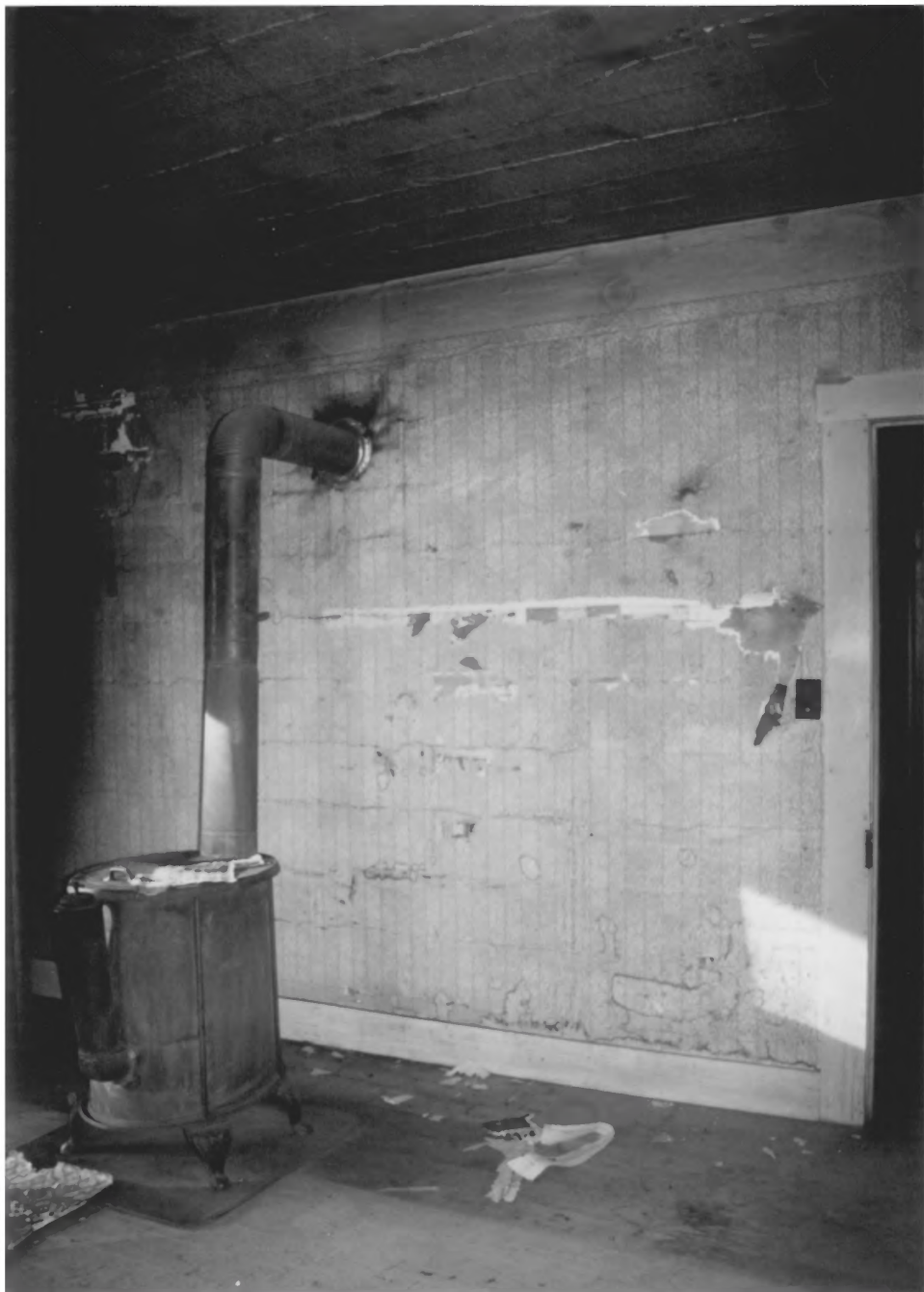
67809 CLOVERDALE ROAD

SISTERS, OR 97759

BEDROOM

13 OF 26





W.T.E. Wilson HOMESTEAD  
70300 CAMP POIK ROAD  
SISTERS, ON 97759  
DESCHUTES COUNTY

MICHAEL HOUSER  
FEB 10, 1997

KATHY DEGGENDORFER  
67809 CLOVENDALE ROAD  
SISTERS, ON 97759

BEDROOM 1

14 OF 26

PHOTO 22 20940



W.T.E Wilson HOMESTEAD

70300 CAMP POIK ROAD

SISTERS, OR 97759

DEMSCHUTZ COUNTY

MICHAEL HOUSER

FEB 10, 1997

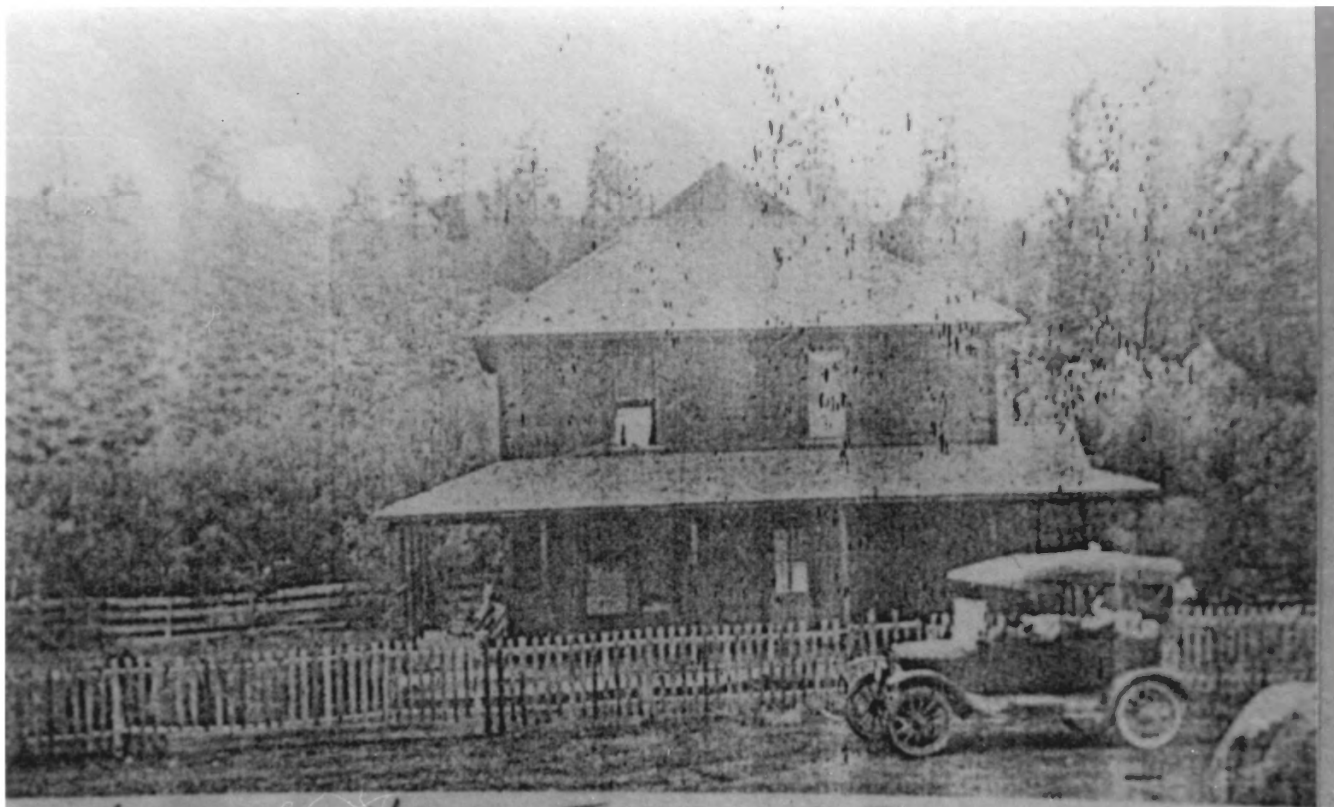
KATHY DEGGENDORFER

67809 CLOVERDALE ROAD

SISTERS, OR 97759

WILLIAM & BERTHA Wilson

WEDDING PHOTO 1886



WILSON HOMESTEAD - SISTERS, OR.

W.T.E Wilson HOMESTEAD  
70300 CAMP POIK ROAD  
SISTERS, ON 97759  
DASCHUMS COUNTY

52814\*\*N172000  
>141<

MICHAEL HOUSER  
FEB 10, 1997

KATHY DEGGENDORFER  
67809 CLOVERDALE ROAD  
SISTERS, ON 97759

Wilson HOME (EAST FACADE) C. 1910

16 OF 26





W.T.E. Wilson HOMESTEAD

70300 CAMP POIK ROAD

SISTERS, ON 97759

Wasco County (040)Z 91-1 N N N \* \* \* 1  
142

MICHAEL HOUSER

FEB 10, 1997

KATHY DEGENORFER

67809 CLOVERDALE ROAD

SISTERS, ON 97759

William T.E. Wilson c. 1923



W.T.E WILSON HOMESTEAD

70300 CAMP POLK ROAD

SISTERS, OR 97759

DESCHUTES COUNTY

MICHAEL HOUSER

FEB 10, 1997

KATHY DEGGENDORFER

67809 CLOVERDALE ROAD

SISTERS, OR 97759

SHEEP / CATTLE BARN

18 OF 26



W.T.E. (Wilson Homestead)

70300 CAMP POIK ROAD

SYSTEMS, ON 97759

WASCOTUMS COUNTY

MICHAEL HOUSER

FEB 10, 1997

040)

KATHY DEGGENDORFER

67809 CLOVEDALE ROAD

SYSTEMS, ON 97759

HAY BARN

19 OF 26





W.T.E. WILSON HOMESTEAD

70300 CAMP POIK ROAD

SISTERS, OR 97759

DESCHEMUS COUNTY

MICHAEL HOUSER

FEB 10, 1997

KATHY DEGGENDORFER

67809 CLOUENDALE ROAD

SISTERS, OR 97759

HAY BARN DETAIL

20 OF 26



W.T.E. WILSON HOMESTEAD

70300 CAMP POLK ROAD

SISTERS, OR 97759

DESCHEMUMS COUNTY

MICHAEL HOUSER

PETS 10, 1997

KATHY DEGGENDORFER

67809 CLOVENALE ROAD

SISTERS, OR 97759

STORAGE SHED

21 OF 26



W.T.E. Wilson HOMESTEAD

70300 CAMP POIK ROAD

SISTERS, CA 97759

DASCHEKUS COUNTY

MICHAEL HOUSER

FEB 10, 1997

KATHY DEGGENDORFER

67809 CLOVERDALE ROAD

SISTERS, CA 97759

LIVESTOCK SHELTER & CORRAL



W.T.E. Wilson HOMESTEAD

70300 CAMP POLK ROAD  
SISTERS, ON 97759  
WASHINGTON COUNTY

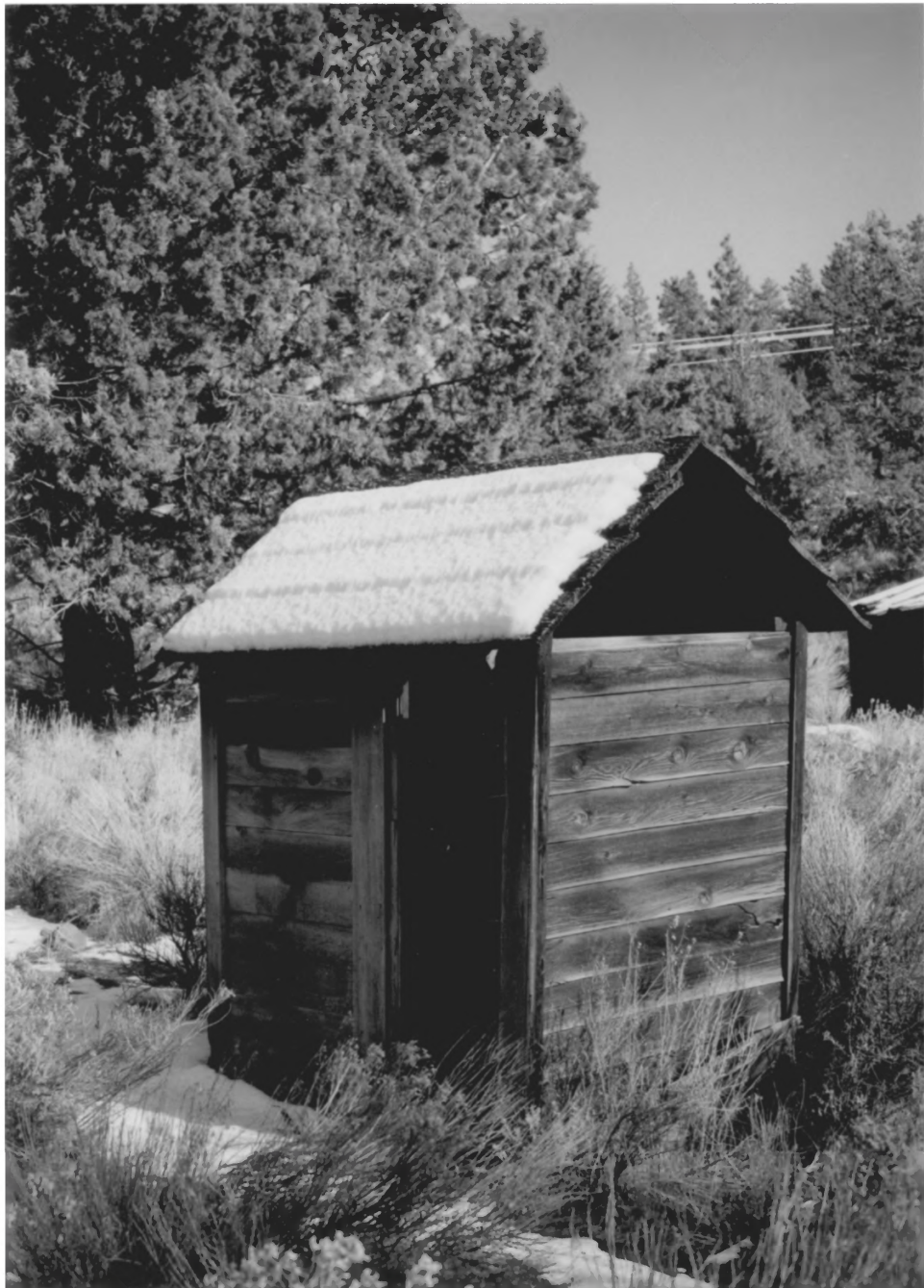
MICHAEL HOUSER  
FEB 10, 1997

KATHY DEGGENDORFER  
67809 CLOUENDALE ROAD  
SISTERS, ON 97759

CHICKEN COOP

23 OF 26





W.T.E Wilson HOMESTEAD

70300 CAMP POIK ROAD

SISTERS, ON 97759

DESEKING COUNTY

MICHAEL HOUSER

FEB 10, 1997

KATHY DEGGENDORFER

67809 CLOVERDALE ROAD

SISTERS, ON 97759

PAIVY

24 OF 26



W.T.E. Wilson HOMESTEAD

20300 CAMP POIK ROAD

SISTERS, ON 97759

MASCHUMS COUNTY

MICHAEL HOUSER

FEB 19, 1997

KATHY DEGGENDORFER

67809 CLOVEDALE ROAD

SISTERS, ON 97759

~~MACHINE~~

~~WOOD~~

SHED

25 OF 26



W.T.E. Wilson HOMESTEAD

70300 CAMP POLK ROAD

SISTERS, ON 97759

DASCHUMS COUNTY

MICHAEL HOUER

FEB 10, 1997

2(040)

KATHY DEBGEN DOEFER

67809 CLOVERDALE ROAD

SISTERS, ON 97759

RABBIT SITED

26 OF 26





LOOKING WEST-NW FROM AREA OF CHICKAN COOP  
ACROSS FANUM LINE AND SQUAW CREEK VALLEY FLOOR  
TO PONDAROSA PINE RIDGE BEYOND.

W.T.E Wilson HOMESTEAD  
70300 CAMP POLK RD  
SISTERS, OR - DESCHUTES CO.

MICHAEL HOUSE  
1130 NW HANUMAN  
BEND, OR 97701

VALLEY FLOOR  
27 OF 28



LOOKING WEST-SW FROM CAMP POLK LOOP ROAD  
ACROSS HAY FIELD TO HAY BARN; THREE SISTERS  
AND BLACK BUTTE IN DISTANCE.

W.T.E. Wilson HOMESTEAD  
20300 CAMP POLK ROAD  
SISTERS, OR - DESCHUTES Co.

MICHAEL HOUSEN  
1130 NW HANUMAN  
BEND, OR 97701

AGRICULTURAL FIELD

28 OF 28