

United States Department of the Interior  
National Park ServiceNational Register of Historic Places  
Registration Form1377  
RECEIVED  
AUG 8 1990NATIONAL  
REGISTER

This form is for use in nominating or requesting determinations of eligibility for individual properties or districts. See instructions in *Guidelines for Completing National Register Forms* (National Register Bulletin 16). Complete each item by marking "x" in the appropriate box or by entering the requested information. If an item does not apply to the property being documented, enter "N/A" for "not applicable." For functions, styles, materials, and areas of significance, enter only the categories and subcategories listed in the instructions. For additional space use continuation sheets (Form 10-900a). Type all entries.

## 1. Name of Property

historic name Perryville American Legion Building  
other names/site number \_\_\_\_\_

## 2. Location

street & number Northwest corner of Plum and Main Streets ☐ not for publication N/A  
city, town Perryville ☐ vicinity N/A  
state Arkansas code AR county Perry code AR 105 zip code 72126

## 3. Classification

## Ownership of Property

- ☒
- private
- 
- ☐
- public-local
- 
- ☐
- public-State
- 
- ☐
- public-Federal

## Category of Property

- ☒
- building(s)
- 
- ☐
- district
- 
- ☐
- site
- 
- ☐
- structure
- 
- ☐
- object

## Number of Resources within Property

| Contributing  | Noncontributing          |
|---------------|--------------------------|
| <u>1</u>      | <u>      </u> buildings  |
| <u>      </u> | <u>      </u> sites      |
| <u>      </u> | <u>      </u> structures |
| <u>      </u> | <u>      </u> objects    |
| <u>1</u>      | <u>      </u> Total      |

Name of related multiple property listing:

N/ANumber of contributing resources previously  
listed in the National Register N/A

## 4. State/Federal Agency Certification

As the designated authority under the National Historic Preservation Act of 1966, as amended, I hereby certify that this  
☒ nomination ☐ request for determination of eligibility meets the documentation standards for registering properties in the  
National Register of Historic Places and meets the procedural and professional requirements set forth in 36 CFR Part 60.  
In my opinion, the property ☒ meets ☐ does not meet the National Register criteria. ☐ See continuation sheet.

Signature of certifying official

Calvin L. Byrd  
Arkansas Historic Preservation Program

Date

8-1-90

State or Federal agency and bureau

In my opinion, the property ☐ meets ☐ does not meet the National Register criteria. ☐ See continuation sheet.

Signature of commenting or other official

Date

State or Federal agency and bureau

## 5. National Park Service Certification

I, hereby, certify that this property is:

- ☒
- entered in the National Register.
- 
- ☐
- See continuation sheet.
- 
- ☐
- determined eligible for the National
- 
- Register.
- ☐
- See continuation sheet.
- 
- ☐
- determined not eligible for the
- 
- National Register.
- 
- ☐
- removed from the National Register.
- 
- ☐
- other, (explain:)

Entered in the  
National RegisterCalvin L. Byrd9/5/90

Signature of the Keeper

Date of Action

## 6. Function or Use

Historic Functions (enter categories from instructions)

SOCIAL/Meeting Hall

Current Functions (enter categories from instructions)

SOCIAL/Meeting Hall

## 7. Description

Architectural Classification  
(enter categories from instructions)

Other: Rustic

Materials (enter categories from instructions)

foundation Stone

walls Stone

roof Asphalt

other METAL/Steel door hardware

Describe present and historic physical appearance.

**United States Department of the Interior  
National Park Service**

**National Register of Historic Places  
Continuation Sheet**

Section number 7 Page 1

---

**Summary**

The Perryville American Legion Building is a single story, cut-stone masonry institutional building designed in the architectural style known as the "Rustic" style. It also features unusual, hand-crafted door hardware and the rough-hewn wood ceiling trusses characteristic of this style.

**Elaboration**

The Perryville American Legion Building is a single story, cut-stone masonry institutional building designed in the architectural style known as the Rustic style. Its design also reflects Tudor Revival influences through the application of half-timbering in the gable ends and the Craftsman style through the use of exposed rafters. It is arranged in a Latin cross plan, with the main or southern entrance placed on axis with the fireplace at the opposite end of the building. The cut stone chimney rises through the ridge and is placed slightly inside of the northern gable end. Its stone foundation and walls are covered by an intersecting gable roof covered with composition shingles.

The southern or front elevation is symmetrically arranged, with the central, projecting gable dividing the wall into two flanking window groupings of three six-over-six, wood sash windows each. Beneath the pediment is the central, double-leaf door which itself is flanked with two tall, fixed eight-pane wood windows. The porch is supported on solid, braced timbers stained a dark hue (as is virtually all of the wood in the building).

The eastern and western elevations are virtually identical, as each is divided into three principal parts: the shorter section of the side gable component to the south, the longer section to the north and the intersecting gable end separating them. The shorter, southern side gable wall is fenestrated with a single, central window; the longer section to the north is accessed via two doors and lighted by a single southern window on the western elevation, while the eastern elevation is accessed by a single entry to the south, near the wall intersection, and is lighted by a grouped pair of windows near the northern gable end. Each of the gable ends are lighted with a central group of three six-over-six wood sash windows.

The northern elevation is also symmetrical, as it is organized into the two walls of the side gable component flanking the central gable end. The gable end is lighted with a central group of three six-over-six wood sash windows as are the side gable walls flanking it.

Noteworthy exterior details include the half-timbering in the gable ends, the braced porch supports, the irregular window sills and lintels (with some ends square and some triangular) and the shutters which ornament some of the windows. The most unusual detailing, however,

**United States Department of the Interior  
National Park Service**

**National Register of Historic Places  
Continuation Sheet**

Section number 7 Page 2

---

is reserved for the doors, which are hung on large, metal hinges which were hand-crafted from old Model "T" Ford axles. They have been worked on a forge and flattened out to form unusual, barbed plates which affix the doors to the jambs, giving the heavy, wood plank doors a Medieval appearance. The lock and latch hardware was also hand-crafted and features decorative pulls, bolts and latches.

The interior is simply appointed, as it has always been, and has remained largely as it appeared when it was constructed. The most noteworthy feature is the rough-hewn wood log trusses which support the roof. Typical of the Rustic style, they are only slightly finished and the vertical members have been cut at odd angles to fit together into the carrying beams. Together with the rough-hewn rafters and purlins that support the roof deck they lend an English parish church aspect to the interior. Later lighting fixtures, crafted from airplane engines, hang from the trusses. The stone fireplace has been covered with plasterboard, but remains intact behind it, and the massive, stepped stonework at the back of the chimney is visible.



## 8. Statement of Significance

Certifying official has considered the significance of this property in relation to other properties:

☐ nationally ☐ statewide ☒ locally

Applicable National Register Criteria ☐ A ☐ B ☒ C ☐ D

Criteria Considerations (Exceptions) ☐ A ☐ B ☐ C ☐ D ☐ E ☐ F ☐ G

Areas of Significance (enter categories from instructions)

Architecture

Period of Significance

c. 1935

Significant Dates

N/A

Cultural Affiliation

N/A

Significant Person

N/A

Architect/Builder

Unknown

State significance of property, and justify criteria, criteria considerations, and areas and periods of significance noted above.

☒ See continuation sheet

## 9. Major Bibliographical References

☒ See continuation sheet

Previous documentation on file (NPS):

- ☐ preliminary determination of individual listing (36 CFR 67)  
has been requested
- ☐ previously listed in the National Register
- ☐ previously determined eligible by the National Register
- ☐ designated a National Historic Landmark
- ☐ recorded by Historic American Buildings  
Survey # \_\_\_\_\_
- ☐ recorded by Historic American Engineering  
Record # \_\_\_\_\_

Primary location of additional data:

- ☐ State historic preservation office
- ☐ Other State agency
- ☐ Federal agency
- ☐ Local government
- ☐ University
- ☐ Other

Specify repository: \_\_\_\_\_

## 10. Geographical Data

Acreage of property Less than one

UTM References

A 15 5117940 3873420  
Zone Easting Northing

C                              

B                                
Zone Easting Northing

D                              

☐ See continuation sheet

Verbal Boundary Description

☒ See continuation sheet

Boundary Justification

This boundary includes all the property historically associated with this resource.

☐ See continuation sheet

## 11. Form Prepared By

name/title Kenneth Story, Architectural Historian

organization Arkansas Historic Preservation Program date July 31, 1990

street & number 225 E. Markham St., Suite 200 telephone (501) 371-2763

city or town Little Rock state Arkansas zip code 72201

**United States Department of the Interior  
National Park Service****National Register of Historic Places  
Continuation Sheet**Section number 8 Page 1**Summary**

Criterion C, local significance

The Perryville American Legion Building remains the best example in Perryville of the Rustic style of architecture, an architectural style which came into popularity during the Great Depression through the rural construction projects carried out by Franklin Delano Roosevelt's Civilian Conservation Corps, which at one point in time maintained sixty-four camps in Arkansas and several in the vicinity of Perryville.

**Elaboration**

The American Legion was founded in France during the relatively quiet and uneventful days that followed the signing of the armistice that ended World War I. American enlisted men from all three of the principal branches of the service then in existence -- the Army, Navy and Marine Corps -- were billeted in various locations for the purpose of maintaining a military presence while the negotiators worked out the details of the treaty that would outline the political future of much of Europe for the next decade. These servicemen found life during the occupation uneventful and boring, and this only compounded the frustration felt by many at not being allowed to return to home to family and friends. A small group of officers -- and especially Lieutenant Colonel Theodore Roosevelt, Jr. and Lieutenant Colonel George A. White -- met to discuss the possibility of establishing a veterans' organization which would include all branches of the military and which would serve the immediate purpose of providing an outlet for some of the energy and frustration felt by the occupation forces but which would also set as its larger goal the establishment of a nationwide veteran's organization that would provide its members with both a social organization and a vehicle for voicing their collective concerns about such issues as national defense, subversive activity, radical thought, domestic social programs and veterans' affairs. Successive meetings over the course of the next several months in both Europe and America further defined the Legion's mandate and purpose. However, it was the shooting of four Legionnaires during an Armistice Day parade in the lumber town of Centralia, Washington in 1919 by socialist IWW organizers and the subsequent coverage of the trial that followed -- in which the Legionnaires were portrayed as the aggressors -- that both galvanized and tempered the Legionnaire spirit. Both the public and the Legion press recognized the dangers of extremism by any party while admitting the need for responsible vigilance against any activity that threatened the democratic form of government. The American Legion began to grow steadily thereafter through an organization that elected officers on the national, state and local levels and provided a voice for its members regarding a variety of national concerns.

During the Depression the American Legion distinguished itself in particular through the expansion of local programs targeted at youth. Of particular note were the founding of American Legion Junior Baseball, the American Legion Oratorical Contest and Boys' State.

**United States Department of the Interior  
National Park Service**

**National Register of Historic Places  
Continuation Sheet**

Section number 8 Page 2

---

It was during this period that the Perryville American Legion Building was constructed. Obviously influenced by the Rustic style architecture being erected by the Civilian Conservation Corps at such nearby locations as Camp Ouachita on Lake Sylvia and the state park on Lake Catherine, the local residents who erected the building added such unusual touches as the hand-forged Model "T" Ford axles and the enormous, over-built stone chimney. It is even possible that CCC participants assisted in the design and construction of this building, given their relative proximity; however, this has not been documented.

The Perryville American Legion Building is locally significant as the best surviving example of the Rustic style, and is significant also by virtue of the unique craftsmanship displayed in its construction.

**United States Department of the Interior**  
**National Park Service**

# **National Register of Historic Places**

## **Continuation Sheet**

Section number 9 Page 1

---

### **Bibliography**

Moley, Raymond, Jr., *The American Legion Story*, (New York, 1966), pp. 41-225.



**United States Department of the Interior  
National Park Service**

**National Register of Historic Places  
Continuation Sheet**

Section number 10 Page 1

---

**Verbal Boundary Description**

Beginning at the point formed by the intersection of the western edge of Plum Street with the northern edge of Main Street, proceed westerly along said edge to its intersection with a perpendicular line running along the western elevation of the building; thence proceed northerly along said line to its intersection with a perpendicular line running along the northern elevation of the building; thence proceed easterly along said line to its intersection with a perpendicular line formed by the western edge of Plum Street; thence proceed southerly along said edge to the point of beginning.

UNITED STATES DEPARTMENT OF THE INTERIOR  
NATIONAL PARK SERVICE

NATIONAL REGISTER OF HISTORIC PLACES  
EVALUATION/RETURN SHEET

REQUESTED ACTION: NOMINATION

PROPERTY NAME: Perryville American Legion Building

MULTIPLE  
NAME:

STATE & COUNTY: ARKANSAS, Perry

DATE RECEIVED: 8/08/90 DATE OF PENDING LIST: 8/20/90  
DATE OF 16TH DAY: 9/05/90 DATE OF 45TH DAY: 9/22/90  
DATE OF WEEKLY LIST:

REFERENCE NUMBER: 90001377

NOMINATOR: STATE

REASONS FOR REVIEW:

APPEAL: N DATA PROBLEM: N LANDSCAPE: N LESS THAN 50 YEARS: N  
OTHER: N PDIL: N PERIOD: N PROGRAM UNAPPROVED: N  
REQUEST: N SAMPLE: N SLR DRAFT: N NATIONAL: N

COMMENT WAIVER: N

☒ ACCEPT ☐ RETURN ☐ REJECT 9/5/90 DATE

Entered in the  
National Register

ABSTRACT/SUMMARY COMMENTS:

RECOM./CRITERIA \_\_\_\_\_  
REVIEWER \_\_\_\_\_  
DISCIPLINE \_\_\_\_\_  
DATE \_\_\_\_\_

DOCUMENTATION see attached comments Y/N see attached SLR Y/N

---

CLASSIFICATION

\_\_\_count      \_\_\_resource type

---

STATE/FEDERAL AGENCY CERTIFICATION

---

FUNCTION

\_\_\_historic      \_\_\_current

---

DESCRIPTION

\_\_\_architectural classification  
\_\_\_materials  
\_\_\_descriptive text

---

SIGNIFICANCE

Period      Areas of Significance--Check and justify below

Specific dates      Builder/Architect  
Statement of Significance (in one paragraph)

\_\_\_summary paragraph  
\_\_\_completeness  
\_\_\_clarity  
\_\_\_applicable criteria  
\_\_\_justification of areas checked  
\_\_\_relating significance to the resource  
\_\_\_context  
\_\_\_relationship of integrity to significance  
\_\_\_justification of exception  
\_\_\_other

---

BIBLIOGRAPHY

---

GEOGRAPHICAL DATA

\_\_\_acreage      \_\_\_verbal boundary description  
\_\_\_UTMs      \_\_\_boundary justification

---

ACCOMPANYING DOCUMENTATION/PRESENTATION

\_\_\_sketch maps    \_\_\_USGS maps    \_\_\_photographs    \_\_\_presentation

---

OTHER COMMENTS

Questions concerning this nomination may be directed to

\_\_\_\_\_ Phone \_\_\_\_\_

Signed \_\_\_\_\_ Date \_\_\_\_\_





Perryville American Legion Hall

Perryville, Arkansas

Joe DeRose

7/6/89

Negative on file at AHPP

View from northwest





V F W POST 7112



Perryville American Legion Hall

Perryville, Arkansas

Joe DeRose

7/6/89

Negative on file at AHPP

View from south





V F W POST 7112

Perryville American Legion Hall

Perryville, Arkansas

Joe DeRose

7/6/89

Negative on file at AHPP

View from south







Perryville American Legion Hall

Perryville, Arkansas

Joe DeRose

7/6/89

Negative on file at AHPP

View from south



Perryville American Legion Hall

Perryville, Arkansas

Joe DeRose

7/6/89

Negative on file at AHPP

Window detail; interior



VFW POST #112



WANTED  
Wanted to buy  
Faint text on the sign

**WANTED**  
Wanted to buy  
VETERANS

Perryville American Legion Hall

Perryville, Arkansas

Joe DeRose

7/6/89

Negative on file at AHPP

View from south





Perryville American Legion Hall

Perryville, Arkansas

Joe DeRose

7/6/89

Negative on file at AHPP

View from south





Perryville American Legion Hall

Perryville, Arkansas

Joe DeRose

7/6/89

Negative on file at AHPP

Interior detail





Perryville American Legion Hall

Perryville, Arkansas

Joe DeRose

7/6/89

Negative on file at AHPP

Window detail





Perryville American Legion Hall

Perryville, Arkansas

Joe DeRose

7/6/89

Negative on file at AHPP

Window detail





Perryville American Legion Hall

Perryville, Arkansas

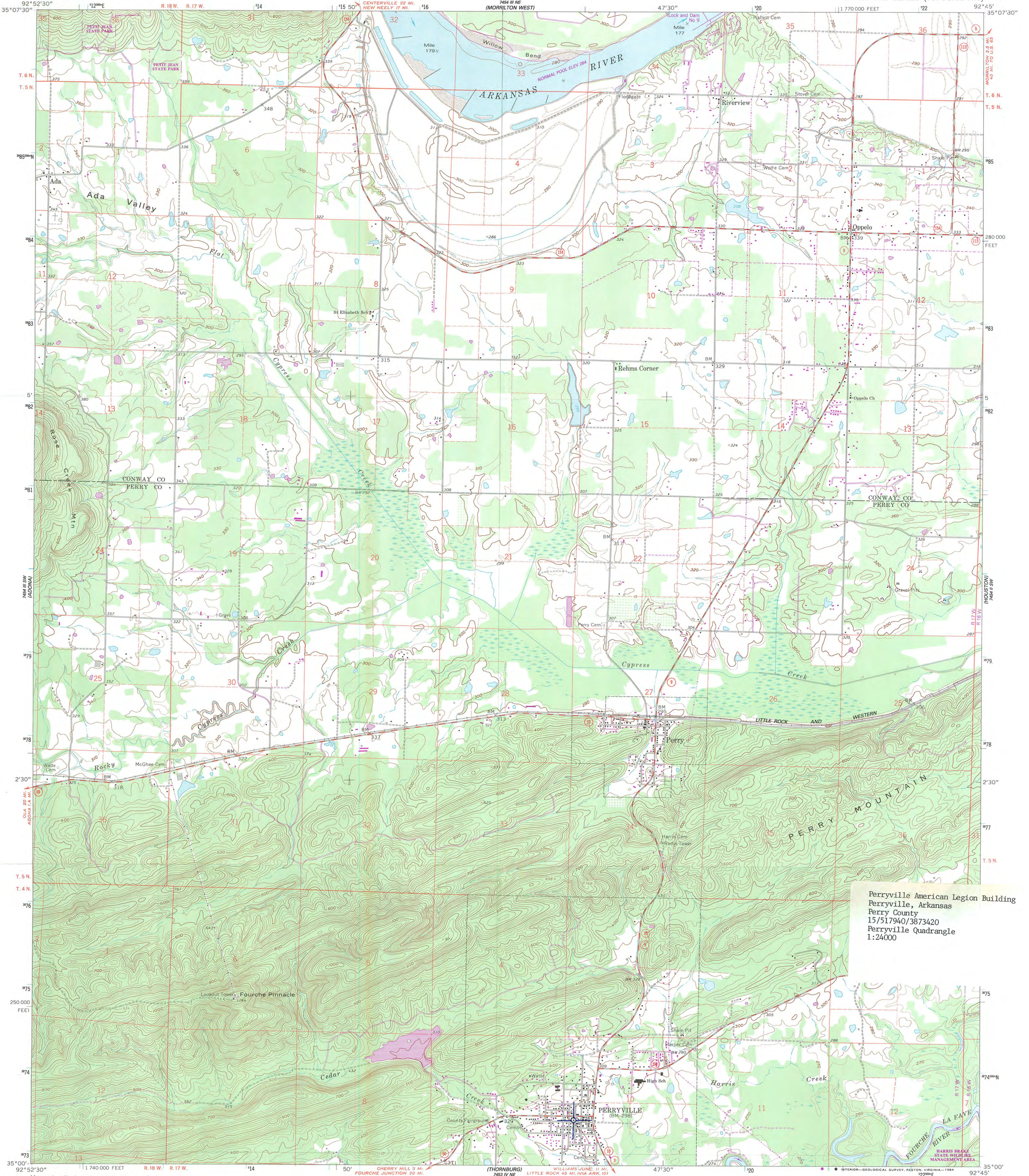
Joe DeRose

7/6/89

Negative on file at AHPP

Gable end detail





Perryville American Legion Building  
Perryville, Arkansas  
Perry County  
15/517940/3873420  
Perryville Quadrangle  
1:24000

Mapped, edited, and published by the Geological Survey

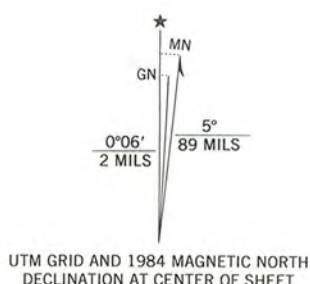
Control by USGS, USC&GS, and USCE

Topography by photogrammetric methods from aerial  
photographs taken 1958. Field checked 1961  
Polyconic projection. 1927 North American datum  
10,000-foot grid based on Arkansas coordinate system, north zone  
1000-meter Universal Transverse Mercator grid ticks,  
zone 15, shown in blue

To place on the predicted North American Datum 1983,  
move the projection lines 7 meters south and  
15 meters east as shown by dashed corner ticks

There may be private inholdings within the boundaries of  
the National or State reservations shown on this map

Revision shown in purple compiled from aerial  
photographs taken 1982 and other sources  
This information not field checked. Map edited 1984



SCALE 1:24,000

CONTOUR INTERVAL 20 FEET  
DOTTED LINES REPRESENT 10-FOOT CONTOURS  
NATIONAL GEODETIC VERTICAL DATUM OF 1929

THIS MAP COMPLIES WITH NATIONAL MAP ACCURACY STANDARDS  
FOR SALE BY U.S. GEOLOGICAL SURVEY, DENVER, COLORADO 80225, OR RESTON, VIRGINIA 22092  
AND ARKANSAS GEOLOGICAL COMMISSION, LITTLE ROCK, ARKANSAS 72204  
A FOLDER DESCRIBING TOPOGRAPHIC MAPS AND SYMBOLS IS AVAILABLE ON REQUEST

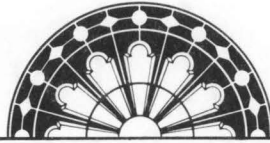


ROAD CLASSIFICATION  
Primary highway, hard surface  
Secondary highway, hard surface  
Light-duty road, hard or improved surface  
Unimproved road  
Interstate Route  
U. S. Route  
State Route

PERRYVILLE, ARK.  
35092-A7-TF-024

1961  
PHOTOREVISED 1984  
DMA 7454 III SE SERIES V884





ARKANSAS  
HISTORIC  
PRESERVATION  
PROGRAM

RECEIVED

AUG 8 1990

NATIONAL  
REGISTER

August 1, 1990

Carol D. Shull  
Chief of Registration  
United States Department of the Interior  
National Register of Historic Places  
National Park Service  
1100 "L" Street, NW  
Washington, DC 20240

RE: Perryville American Legion Building - Perryville  
Perry County, Arkansas

Dear Carol:

We are enclosing for your review the nomination of the above referenced property. The Arkansas Historic Preservation Program has complied with all applicable nominating procedures and notification requirements in the nomination process.

Thank you for your consideration in this matter.

Sincerely,

Cathy Buford  
State Historic Preservation Officer

CB:dg

Enclosures

