

PROPOSED LINES

RT. 50

PRESENT LINE

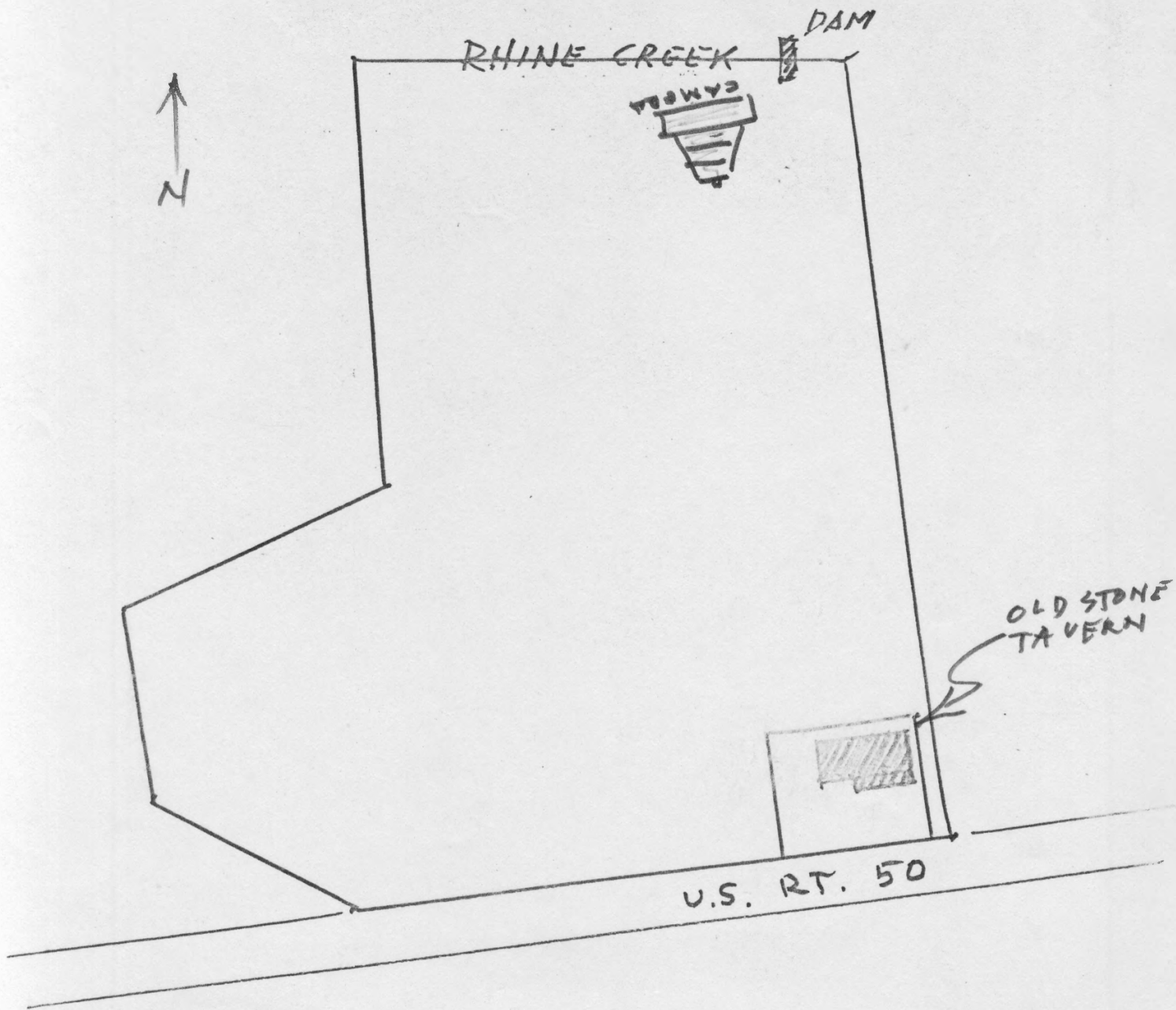


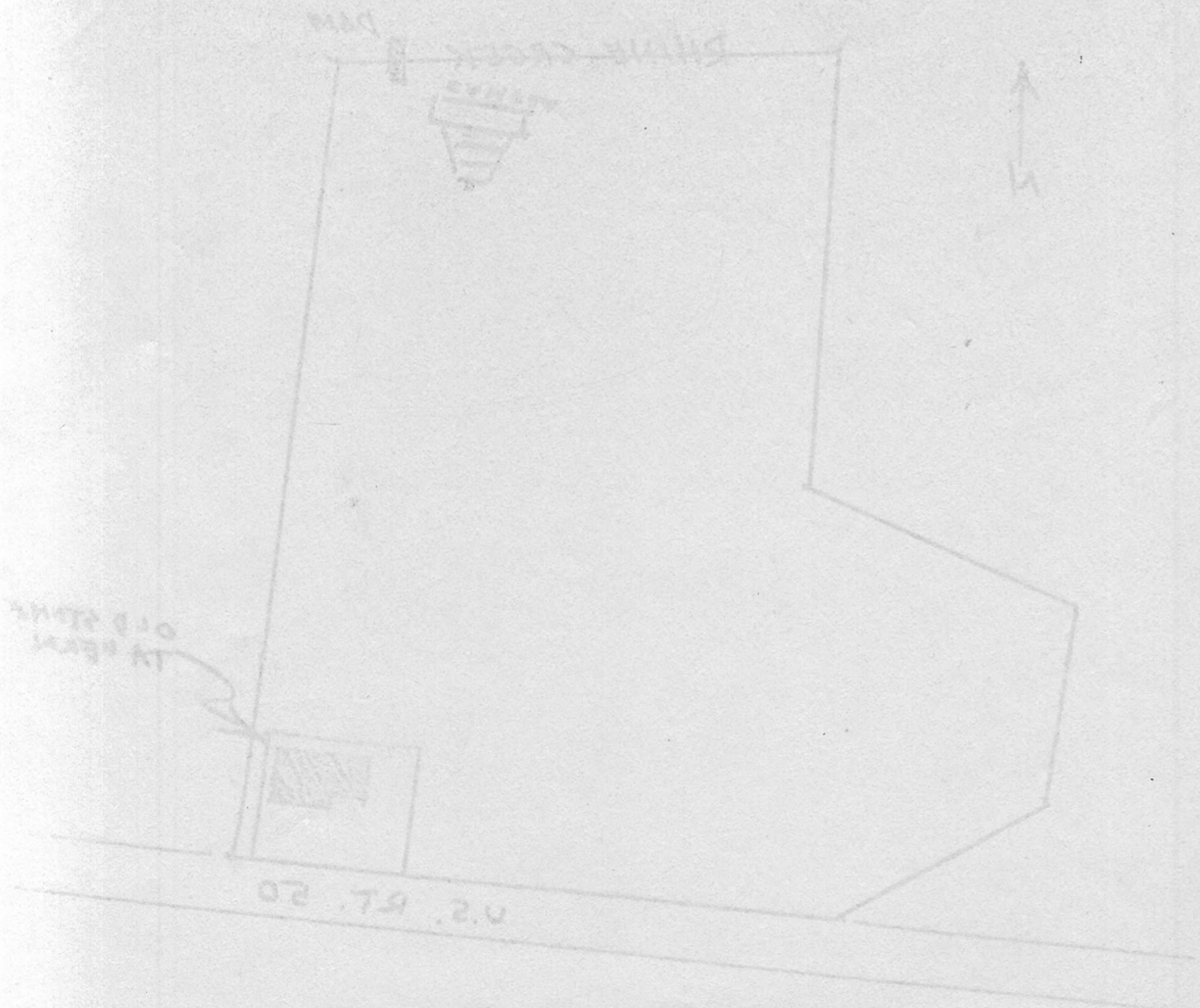
Red Horse Tavern  
Aurora vicinity, Preston County,  
West Virginia

Louis Stemple, credit  
1978

Negative; W.V. Dept. of Culture and  
History, Charleston, W.V.  
General view of meadow lands looking  
toward Red Horse Tavern  
Looking south

FEB 28 1979





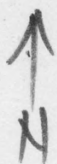
increased approved May 4, 1979



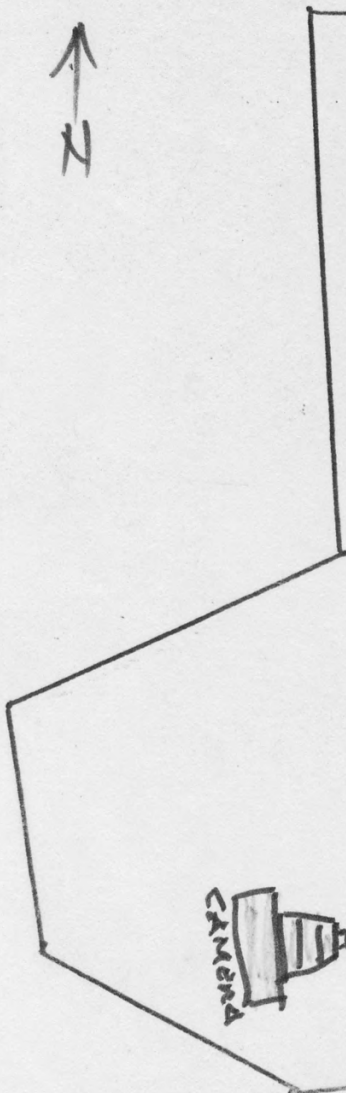
Red Horse Tavern  
Aurora vicinity, Preston County,  
West Virginia  
Louis Stemple, credit  
1978

Negative; W.V. Dept of Culture and  
History, Charleston, West Virginia  
General view of meadow lands and  
Red Horse Tavern  
Looking east

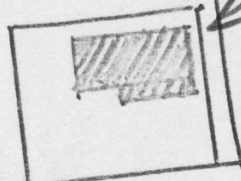
FEB 28 1979



RHINE CREEK DAM



OLD STONE TAVERN



U.S. RT. 50

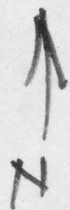


increased approved May 4, 1979

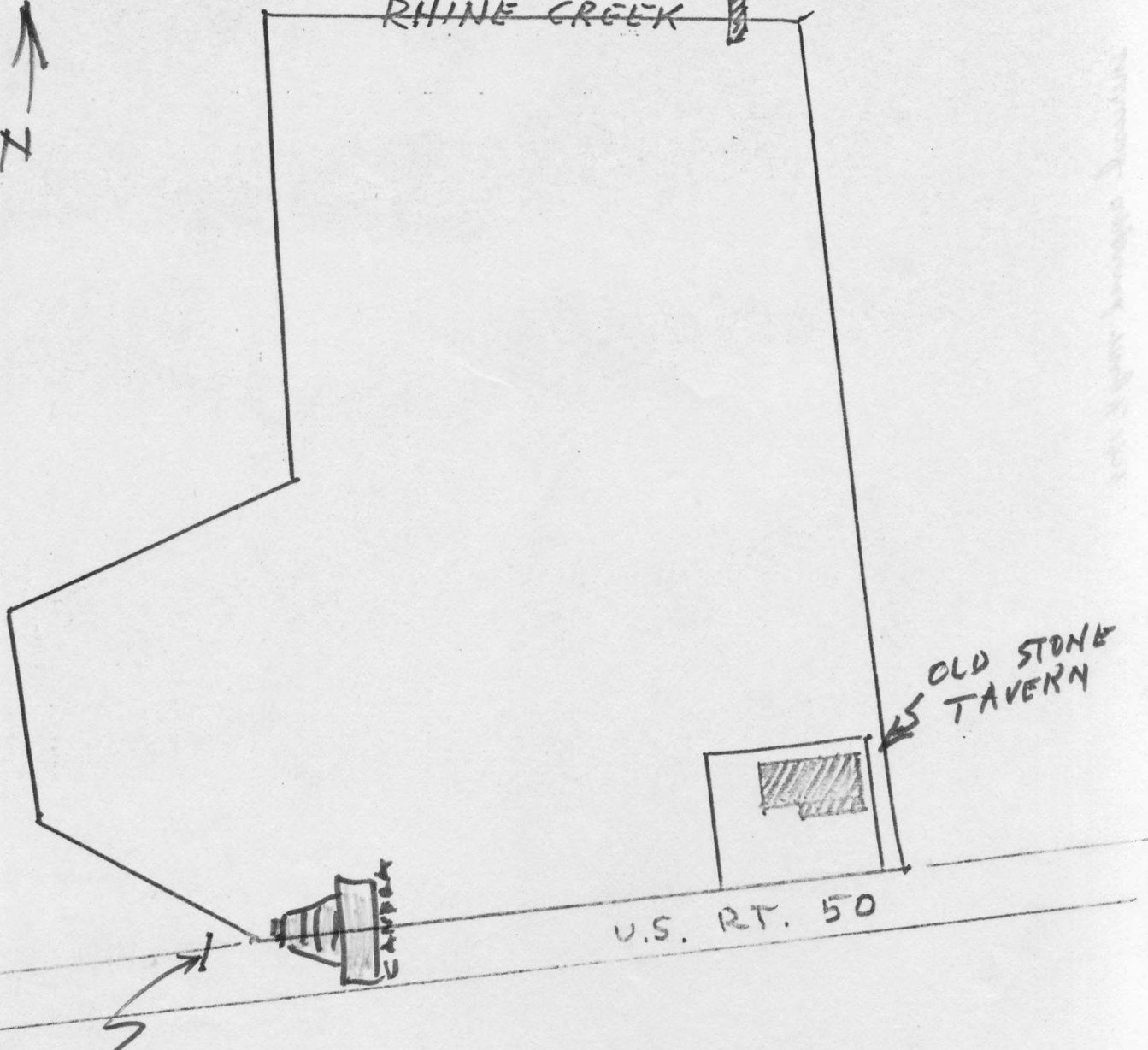
CATHEDRAL  
STATE PARK  
A NATURAL AREA  
WOODLAND TRAILS

Red Horse Tavern  
Aurora vicinity, Preston County,  
West Virginia  
Louis Stemple, credit  
1978  
Negative; W V Dept of Culture and  
History  
View of Cathedral State Park boundary  
Looking west

FEB 28 1979



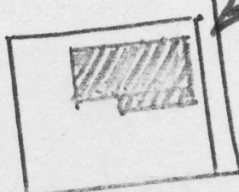
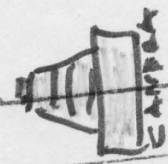
RHINE CREEK DAM



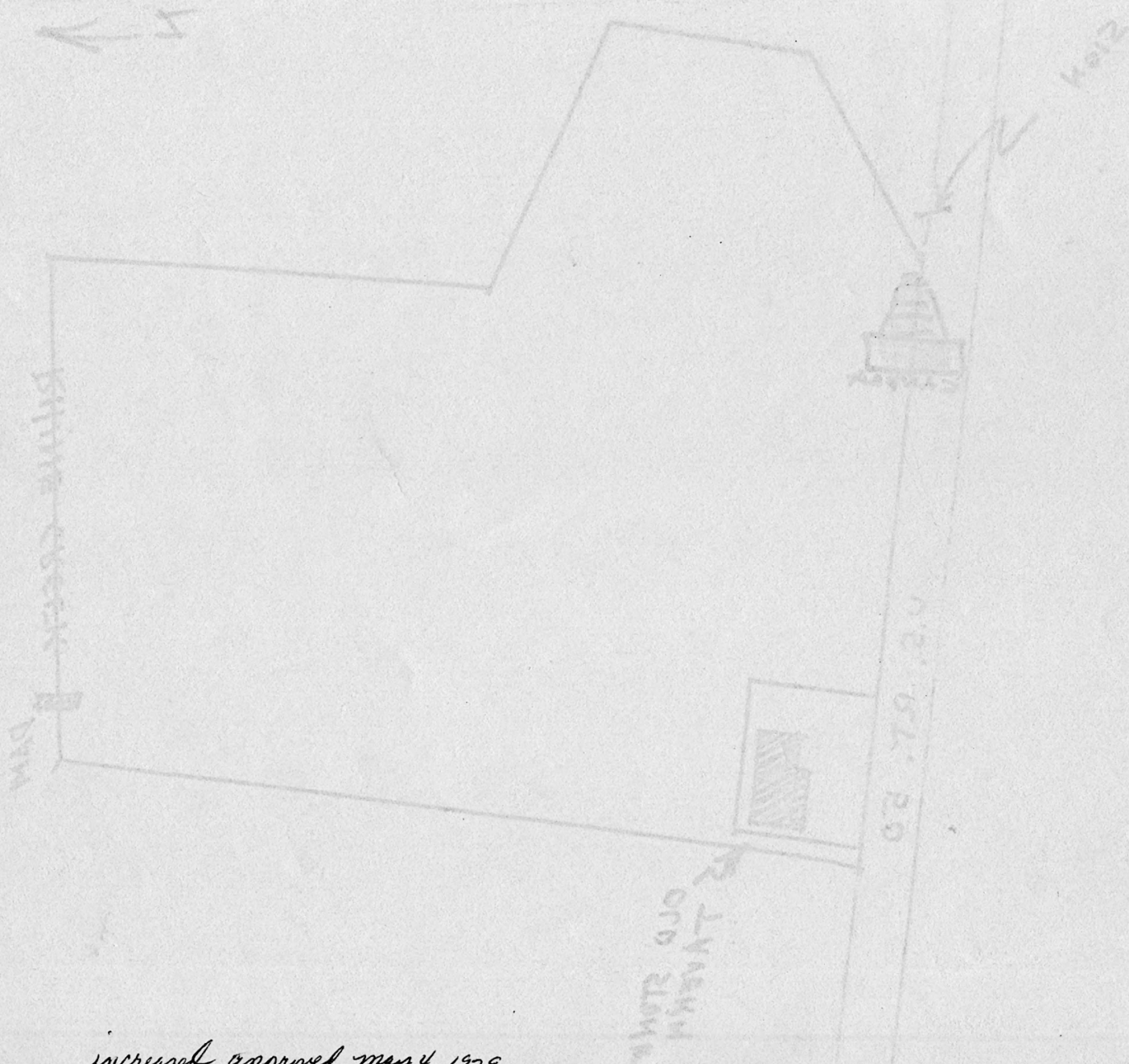
SIGN

U.S. RT. 50

OLD STONE TAVERN



*Handwritten text, possibly a name or date, written vertically on the right side of the page.*





Red Horse Tavern  
Aurora vicinity, Preston County,  
West Virginia  
Louis Stemple, credit  
1978

Negative; W.V Dept. of Culture and  
History, Charleston, W.V.  
General view of Red Horse Tavern  
meadow lands looking toward  
Cathedral State Park  
Looking southwest

FEB 28 1979



RHINE CREEK

DAM



OLD STONE  
TAVERN

U.S. RT. 50

PAM

Blind Creek



OLD STONE  
TOWER



U.S. RT. 20

issued approved May 4, 1979