



Dr. E.A. Kilbride Clinic  
Worthington, Minnesota  
Charles W. Nelson  
1976

DEC 6 1976

Minnesota Historical Society, 690  
Cedar Street, St. Paul, Minn.  
North (front) and East sides  
16A/01654

NOV 23 1977 Nobles County, Minn.  
Photo # 1 of 4



Dr. E.A. Kilbride Clinic  
Worthington, Minnesota  
Charles W. Nelson

DEC 6 1976

1976

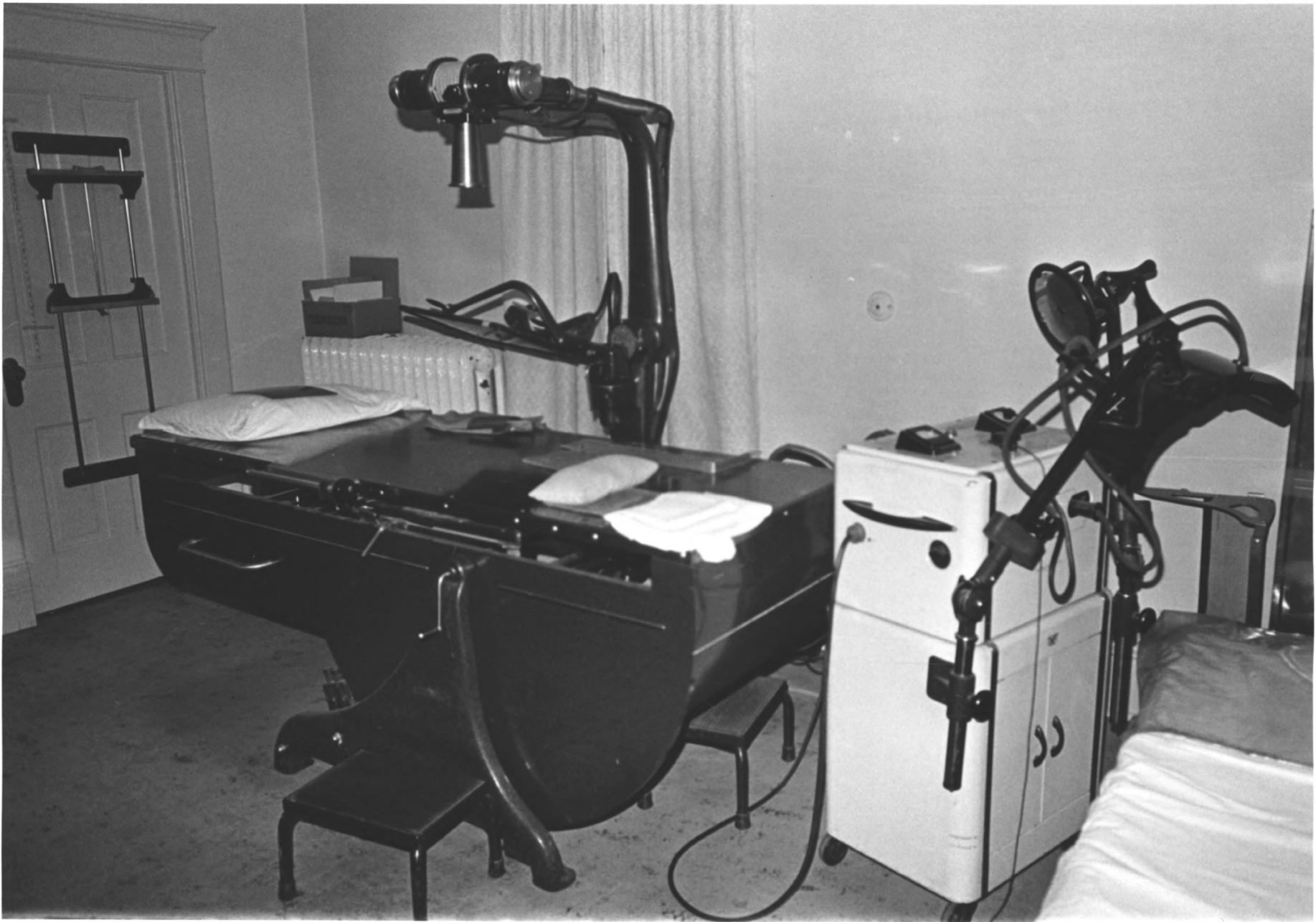
Minnesota Historical Society, 690  
Cedar Street, St. Paul, Minn.

Interior: Patients' Examination Room  
14A/01654

*Nobles County, Minnesota*

NOV 23 1977

*Photo # 2 of 4*



Dr. E.A. Kilbride Clinic  
Worthington, Minnesota  
Charles W. Nelson  
1976

DEC 6 1976

Minnesota Historical Society, 690  
Cedar Street, St. Paul, Minn.  
Interior: X-ray Room  
15A/01654

NOV 23 1977 Nobles County, Minn.  
Photo # 3 of 4



Dr. E.A. Kilbride Clinic  
Worthington, Minnesota  
Charles W. Nelson  
1976

DEC 6 1976

Minnesota Historical Society, 690  
Cedar Street, St. Paul, Minn.  
Interior: Surgery Room  
11A/01654

NOV 23 1977

Nobles County, Minn.  
Photo # 4 of 4