



Royal Gorge Bridge and Incline Railway
Fremont County, Colorado

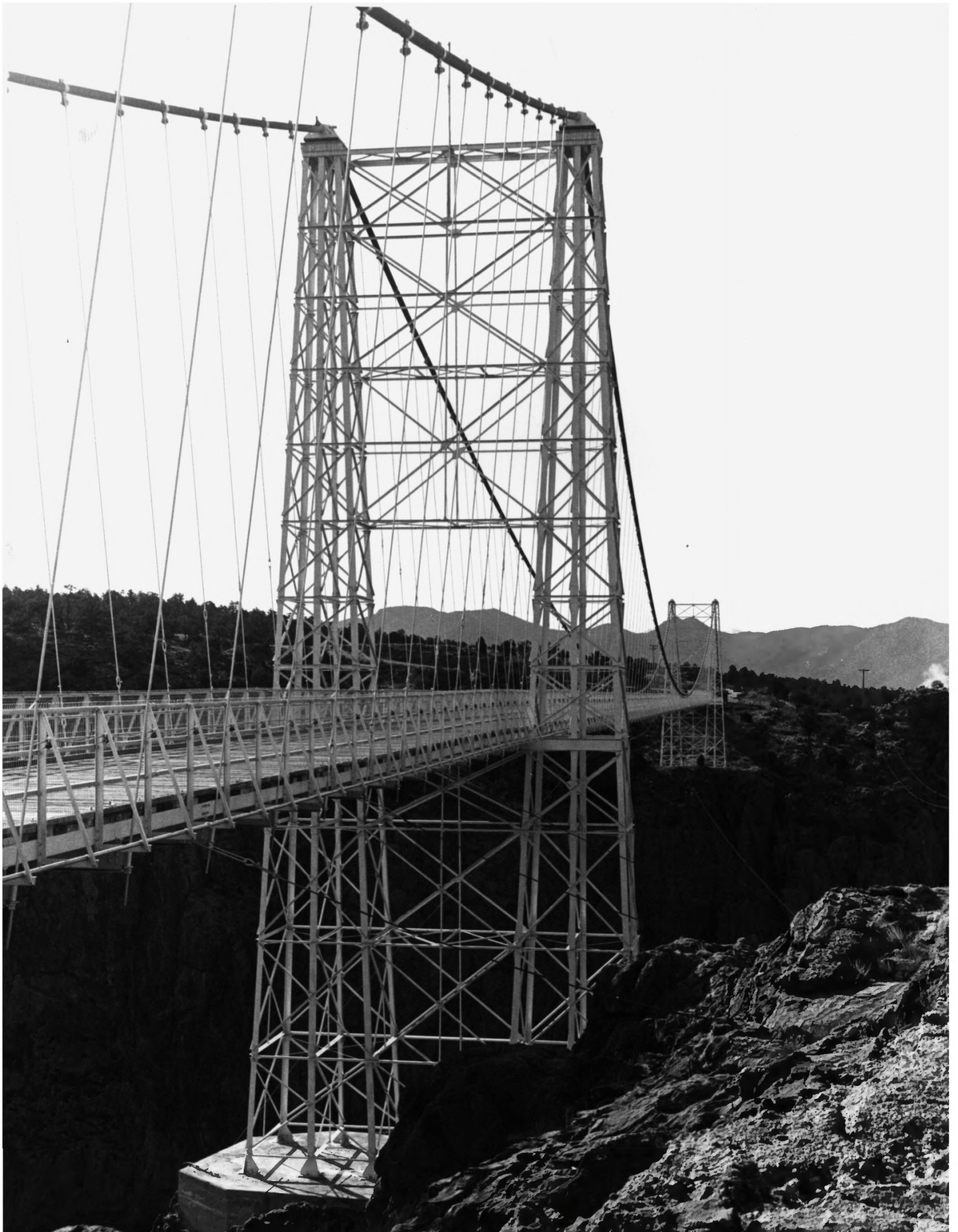
Photographer: Cultural Resource
Consultants, Inc.

Negative at Royal Gorge Co.
P.O. Box 549
Canon City, CO 81212

Date of Photo: December, 1982

Photo 1 of 10

Modern buildings to the east of the
bridge (visible in background).



Royal Gorge Bridge and Incline Railway
Fremont County, CO

Photographer: Cultural Resource
Consultants, Inc.

Negative at Royal Gorge Co.

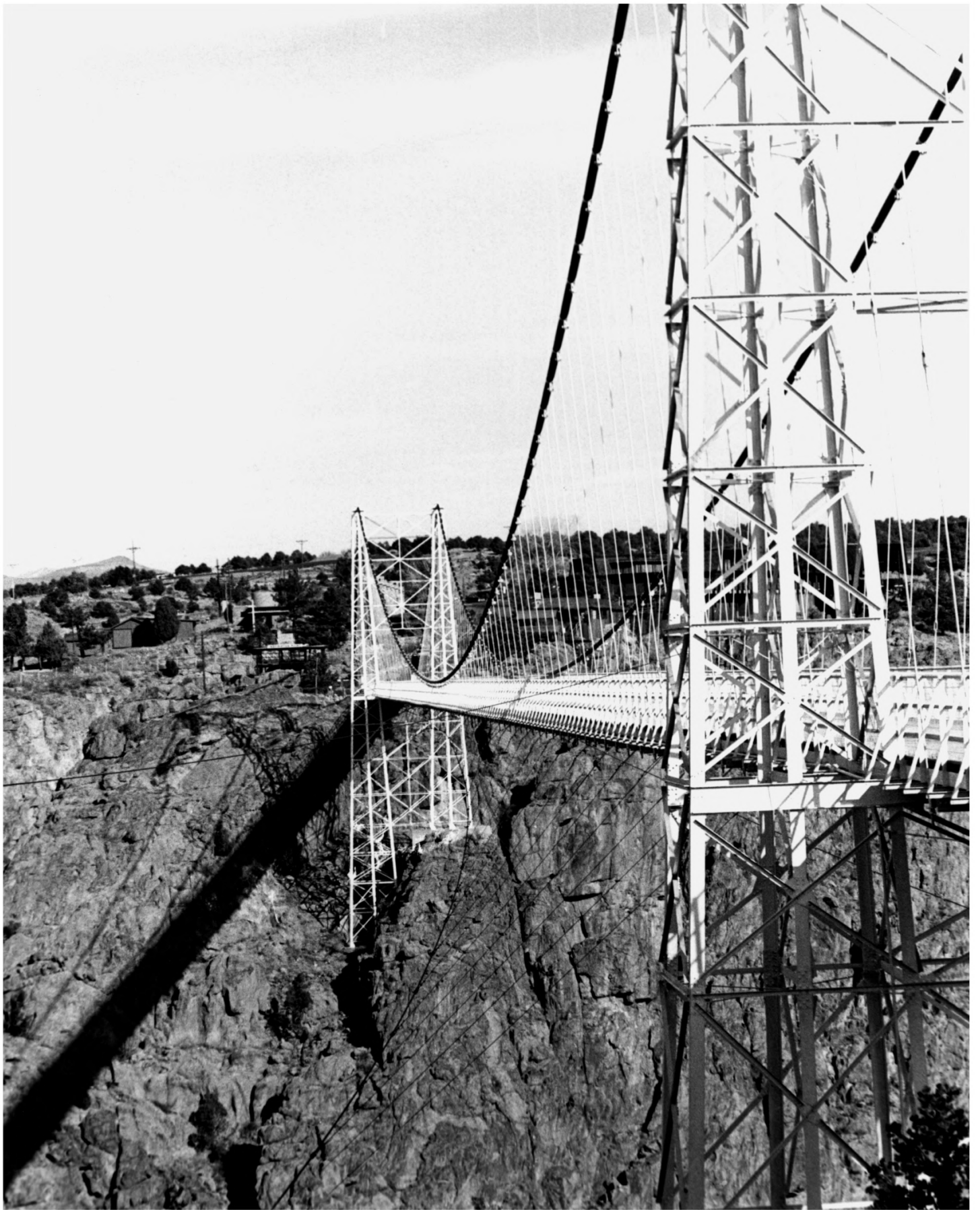
P.O. Box 549

Canon City, CO 81212

Date of Photo: December, 1982

Photo 2 of 10

North end of bridge-view SW.



Royal Gorge Bridge and Incline Railway
Fremont County, CO

Photographer: Cultural Resource
Consultants, Inc.

Negative at Royal Gorge CO.

P. O. Box 549

Canon City, CO 81212

Date of Photo: December 1982

Photo 3 of 10

South end of bridge-view NE. Note the
different heights of the tower on the
north end.



Royal Gorge Bridge and Incline Railway
Fremont County, Colorado

Photographer: Cultural Resource
Consultants, Inc.

Negative at Royal Gorge Co.

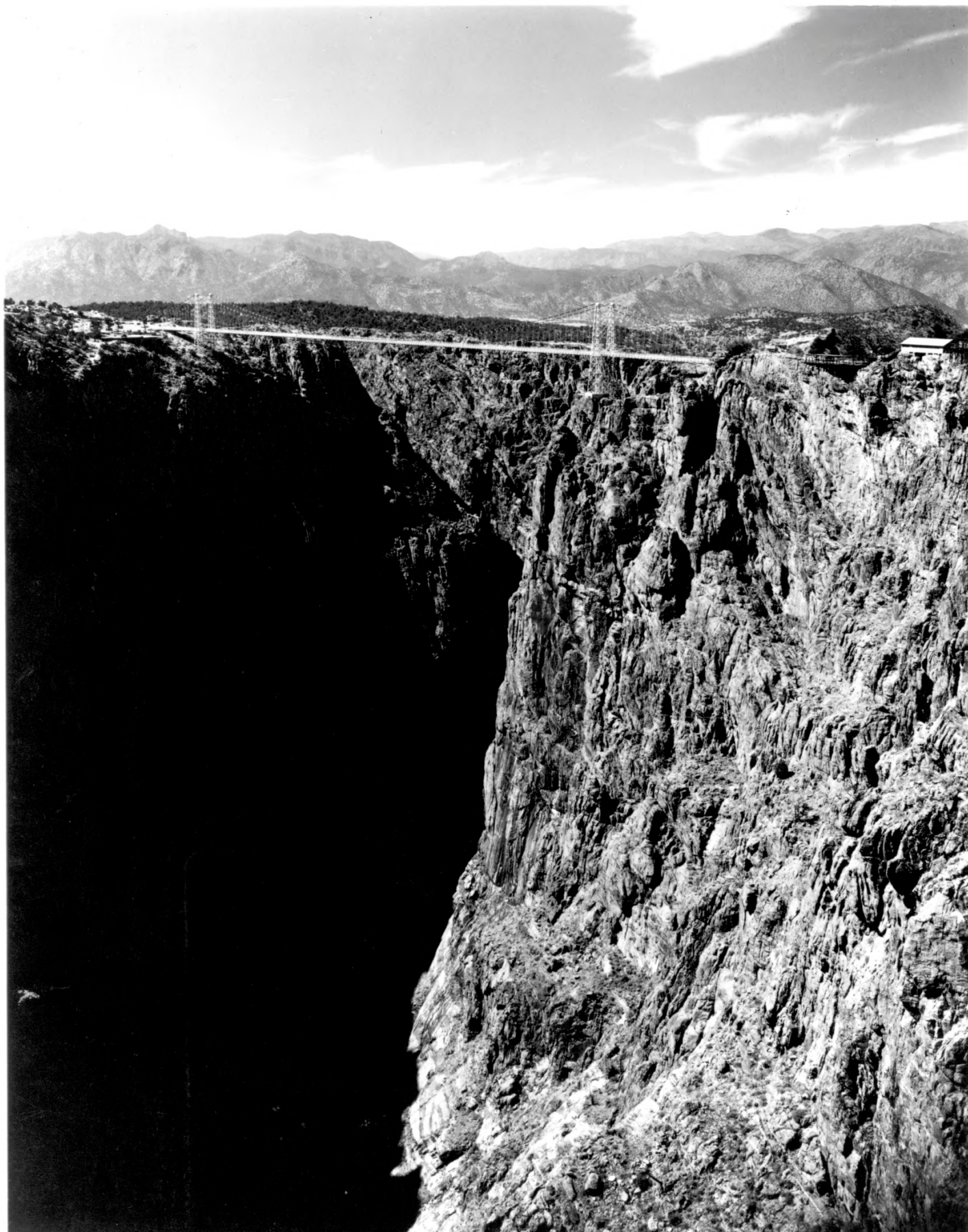
P.O. Box 549

Canon City, CO 81212

Date of Photo: December, 1982

Photo 4 of 10

South end of bridge-view NE.



Royal Gorge Bridge and Incline Railway
Fremont County, Colorado

Photographer: Robert McIntyre

Negative on file at:

Royal Gorge Co.

P.O. Box 549

Canon City, CO 81212

Date of Photo: May, 1982

Photo 5 of 10

Royal Gorge Bridge-view is NE.



Royal Gorge Bridge and Incline Railway
Fremont County, Colorado

Photographer: Cultural Resource
Consultants, Inc.

Negative at Royal Gorge Co.
P. O. Box 549
Canon City, CO 81212

Date of Photo: December 1982

Photo 6 of 10

Cable equipment bldg.-view is NE.



Royal Gorge Bridge and Incline Railway
Fremont County, Colorado

Photographer: Cultural Resource
Consultants, Inc.

Negative at Royal Gorge Co.

P.O. Box 549

Canon City, CO 81212

Date of Photo: December 1982

Photo 7 of 10

Operator Bldg.-view is N



▲ POINT ALTA VISTA

Kodak

Royal Gorge Bridge and Incline Railway
Fremont County, Colorado

Photographer: Cultural Resource
Consultants, Inc.

Negative at Royal Gorge Co.

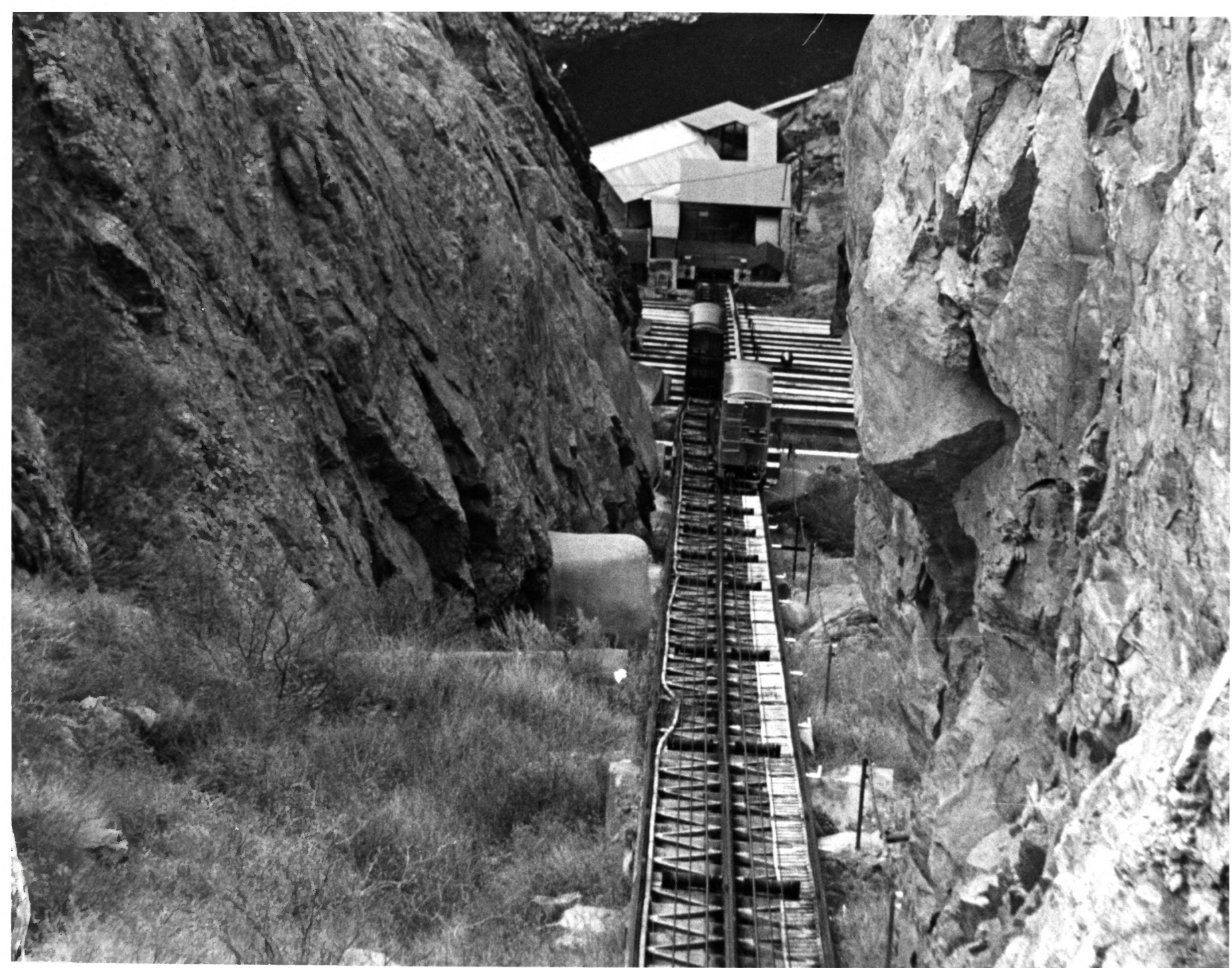
P.O. Box 549

Canon City, CO 81212

Date of Photo: December, 1982

Photo 8 of 10

Lower Terminal-view is north.



Royal Gorge Bridge and Incline Railway
Fremont County, CO

Photographer: Cultural Resource
Consultants, Inc.

Negative at Royal Gorge Co.
P.O. Box 549
Canon City, CO 81212

Date of Photo: December 1982

Photo 9 of 10

Incline Railway track.



Royal Gorge Bridge and Incline Railway
Fremont County, CO

Photographer: Cultural Resource
Consultants, Inc.

Negative at Royal Gorge Co.

P.O. Box 549

Canon City, Co 81212

Date of Photo: December, 1982

Photo 10 of 10

Incline Railway Cars and Operator
Building in Background