



Photo #1/21

"Raynham" (Kneeland Townsend House), New Haven, CT
Facade, Northwest corner

Photo: N.S. Sutherland 7/78

Negs: Conn. Historical Comm.

JUL 11 1980

DEC 03 1979



Photo #2/21 JUL 11 1980

"Raynham" (Kneeland Townsend House), New Haven, CT
Facade, detail entry

Photo: N.S. Sutherland 7/78

Negs: Conn. Historical Comm.

DEC 03 1979

co.



Photo #4 /21 JUL 11 1980
"Raynhan" (Kneeland Townsend House), New Haven, CT *cd.*

East elevation

Photo: N.S. Sutherland 7/78

DEC 03 1979

Negs: Conn. Historical Comm.



Photo #5/21

JUL 11 1980

Co-

"Raynham" (Kneeland Townsend House), New Haven, CT

East elevation, detail, rear entry

Photo: N.S.Sutherland 7/78

Negs: Conn. Historical Comm.

DEC 03 1979



Photo #6/21

"Raynham" (Kneeland Townsend House), ^{Co.} New Haven, CT
East elevation, detail, fountain and tower

Photo: N.S. Sutherland 7/78

Negs: Conn. Historical Comm.

JUL 1 1980

DEC 03 1979

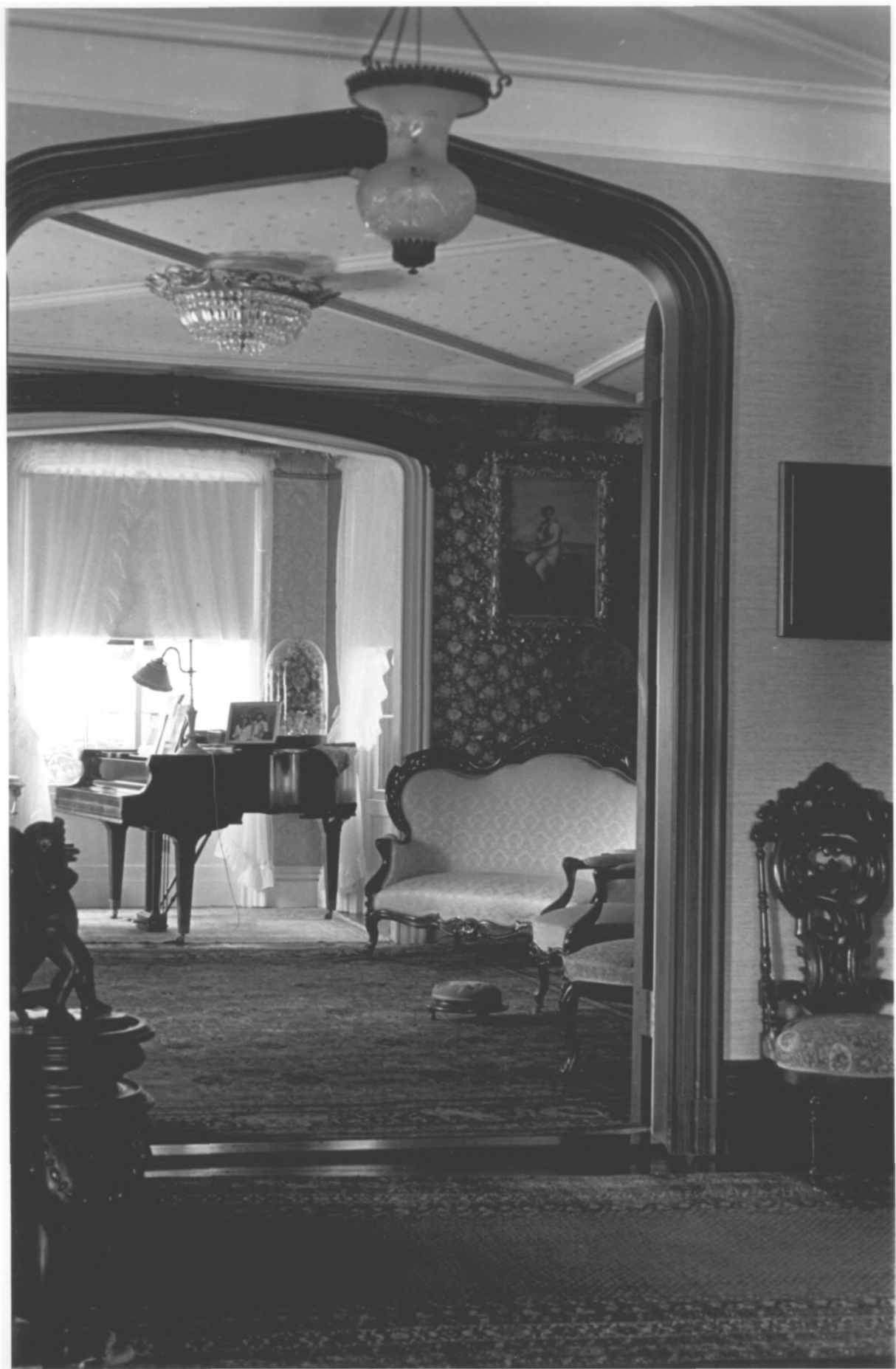


Photo #7/21

JUL 11 1980

"Raynham" (Kneeland Townsend House), New Haven, CT
Interior, North parlor (Glory Room)

Photo: N.S.Sutherland 7/78

DEC 03 1979

Negs: Conn. Historical Comm.



JUL 11 1980

Photo #8/21

"Raynham" (Kneeland Townsend House), New Haven, CT
Interior, South Parlor, detail of mantel

Photo: N.S.Sutherland 7/78

Negs: Conn. Historical Comm.

DEC 03 1979



Photo #9/21

JUL 11 1980

"Raynham" (Kneeland Townsend House), ^{Co.} New Haven, CT
Interior Central Stairs, newel post

Photo: N.S.Sutherland 7/78

Negs: Conn. Historical Comm.

DEC 03 1979



Photo #10/21

JUL 11 1980

cl.

"Raynham" (Kneeland Townsend House), New Haven, CT.

Interior detail, newel post showing oak & acorn motif

Photo: N.S.Sutherland 7/78

Negs: Conn. Historical Comm.

DEC 03 1979



JUL 11 1980

Photo #11/21

"Raynham" (Kneeland Townsend House), New Haven, CT

Summer House/gazebo

Photo: N.S. Sutherland 7/78

DEC 03 1979

Negs: Conn. Historical Comm.



Photo #12/21

DEC 03 1979

CS.

"Raynham" (Kneeland Townsend House), New Haven, CT

Facade Carriage house

Photo: N.S.Sutherland 7/78

Negs: Conn. Historical Comm.

JUL 11 1980



Photo #13 *21*

Co.

"Raynham" (Kneeland Townsend House), New Haven, CT

Carriage house West elevation

Photo: N.S.Sutherland 7/78

Negs: Conn. Historical Comm.

JUL 11 1980 DEC 03 1979



Photo #14/21

DEC 03 1979

"Raynham" (Kneeland Townsend House), New Haven, CT

Barnyard

Photo: N.S.Sutherland 7/78

Negs: Conn. Historical Comm.

JUL 11 1980



Photo #15/21 DEC 03 1979

ed.

"Raynham" (Kneeland Townsend House), New Haven, CT

Barn, East elevation

Photo: N.S.Sutherland 7/78

Negs: Conn. Historical Comm.

JUL 11 1980



Photo #16²/21 DEC 03 1979
"Raynham" (Kneeland Townsend House)
Kennel wing East of barn
Photo: N.S.Sutherland 7/78
Negs: Conn. Historical Comm.

CD.
New Haven, CT

JUL 11 1980



JUL 11 1980

Photo #17 *21*

"Raynham" (Kneeland Townsend House), New Haven, CT
Caretakers Cottage left, Piggery, right

Photo: N.S. Sutherland 7/78

Negs: Conn. Historical Comm.

DEC 03 1979



Photo #18/21

"Raynham" (Kneeland Townsend House), New Haven, CT

Pidgeon coop/Quail house (corn crib)

Photo: N.S.Sutherland 7/78

Negs: Conn. Historical Comm.

DEC 03 1979

co.
JUL 1 1980



Photo #19/21

"Raynham" (Kneeland Townsend House), New Haven, CT

Gardeners Cottage

Photo: N.S.Sutherland 7/78

Negs: Conn. Historical Comm.

JUL 1 1980
CD
DEC 03 1979



Photo #20 / 21

JUL 11 1980

CO.

"Raynham" (Kneeland Townsend House), New Haven, CT
Vineyard & garden between Gardener's cottage & house

Photo: N.S. Sutherland 7/78

Negs: Conn. Historical Comm.

DEC 03 1979



Photo #21/21

JUL 11 1960

"Raynham" (Kneeland Townsend House), New Haven, CT
Walk way view from Gardener's cottage towards house

Photo: N.S.Sutherland 7/78

New Haven Co.

Negs: Conn. Historical Comm.

DEC 03 1979