

10-71

20

United States Department of the Interior
National Park Service

National Register of Historic Places
Registration Form

This form is for use in nominating or requesting determinations for individual properties and districts. See instructions in *How to Complete the National Register of Historic Places Registration Form* (National Register Bulletin 16A). Complete each item by marking "x" in the appropriate box or by entering the information requested. If an item does not apply to the property being documented, enter "N/A" for "not applicable." For functions, architectural classification, materials, and areas of significance, enter only categories and subcategories from the instructions. Place additional entries and narrative items on continuation sheets (NPS Form 10-900a). Use a typewriter, word processor, or computer, to complete all items.

1. Name of Property

historic name Center & Abernathy Store Building

other names/site number Basin Pryde Restaurant

2. Location

street & number 23-33 Ocoee Street not for publication

city or town Copperhill vicinity

state Tennessee code TN county Polk code 139 zip code 37317

3. State/Federal Agency Certification

As the designated authority under the National Historic Preservation Act, as amended, I hereby certify that this nomination request for determination of eligibility meets the documentation standards for registering properties in the National Register of Historic Places and meets the procedural and professional requirements set forth in 36 CFR Part 60. In my opinion, the property meets does not meet the National Register criteria. I recommend that this property be considered significant nationally statewide locally. (See continuation sheet for additional comments.)

Herbert L. Huger 7/14/92
Signature of certifying official/Title Date
Deputy State Historic Preservation Officer/ Tennessee Historical Commission
State of Federal agency and bureau

In my opinion, the property meets does not meet the National Register criteria. (See continuation sheet for additional comments.)

Signature of certifying official/Title Date

State or Federal agency and bureau

4. National Park Service Certification

I hereby certify that the property is:

- entered in the National Register.
 See continuation sheet.
- determined eligible for the National Register
 See continuation sheet.
- determined not eligible for the National Register.
- removed from the National Register.
- other, (explain): _____

Signature of the Keeper

Entered in the
National Register

Date of Action

Sharon Byers 9/2/92

Center & Abernathy Store Building
Name of Property

Polk County, Tennessee
County and State

5. Classification

Ownership of Property
(Check as many boxes as apply)

- private
- public-local
- public-State
- public-Federal

Category of Property
(Check only one box)

- building(s)
- district
- site
- structure
- object

Number of Resources within Property
(Do not include previously listed resources in the count.)

Contributing	Noncontributing	
1		buildings
		sites
		structures
		objects
1	0	Total

Name of related multiple property listing
(Enter "N/A" if property is not part of a multiple property listing.)

Historic Resources of the Tennessee Copper Basin

Number of contributing resources previously listed in the National Register

0

6. Function or Use

Historic Functions
(Enter categories from instructions)

COMMERCE/TRADE: specialty store

Current Functions
(Enter categories from instructions)

COMMERCE/TRADE: restaurant

COMMERCE/TRADE: specialty store

7. Description

Architectural Classification
(Enter categories from instructions)

OTHER: 20th Century Commercial

Materials
(Enter categories from instructions)

foundation BRICK

walls BRICK

roof ASPHALT

other WOOD

copper

Narrative Description

(Describe the historic and current condition of the property on one or more continuation sheets.)

8. Statement of Significance

Applicable National Register Criteria

(Mark "x" in one or more boxes for the criteria qualifying the property for National Register listing.)

- A Property is associated with events that have made a significant contribution to the broad patterns of our history.
B Property is associated with the lives of persons significant in our past.
C Property embodies the distinctive characteristics of a type, period, or method of construction or represents the work of a master, or possesses high artistic values, or represents a significant and distinguishable entity whose components lack individual distinction.
D Property has yielded, or is likely to yield, information important in prehistory or history.

Criteria Considerations n/a
(Mark "x" in all the boxes that apply.)

Property is:

- A owned by a religious institution or used for religious purposes.
B removed from its original location.
C a birthplace or grave.
D a cemetery.
E a reconstructed building, object, or structure.
F a commemorative property.
G less than 50 years of age or achieved significance within the past 50 years.

Areas of Significance

(Enter categories from instructions)

Architecture

Commerce

Period of Significance

1925-1941

Significant Dates

1925

Significant Person

(Complete if Criterion B is marked above)

n/a

Cultural Affiliation

n/a

Architect/Builder

unknown

Narrative Statement of Significance

(Explain the significance of the property on one or more continuation sheets.)

9. Major Bibliographical References

Bibliography

(Cite the books, articles, and other sources used in preparing this form on one or more continuation sheets.)

Previous documentation on file (NPS): n/a

- preliminary determination of individual listing (36 CFR 67) has been requested
previously listed in the National Register
previously determined eligible by the National Register
designated a National Historic Landmark
recorded by Historic American Buildings Survey #
recorded by Historic American Engineering Record #

Primary location of additional data:

- State Historic Preservation Office
Other State agency
Federal agency
Local government
University
Other

Name of repository:

Southeast Tennessee Development District

Center & Abernathy Store Building
Name of Property

Polk County, Tennessee
County and State

10. Geographical Data

Acreage of Property less than 1 acre

UTM References

(Place additional UTM references on a continuation sheet.)

Mineral Bluff GA, NC, TENN 134 NW

1	1 6	7 3 9 9 8 0	3 8 7 4 6 8 0
	Zone	Easting	Northing

3			
	Zone	Easting	Northing
4			

See continuation sheet

Verbal Boundary Description

(Describe the boundaries of the property on a continuation sheet.)

Boundary Justification

(Explain why the boundaries were selected on a continuation sheet.)

11. Form Prepared By

name/title Karen L. Daniels/ Historic Preservation Planner

organization Southeast Tennessee Development District date March 1992

25 Cherokee Boulevard
street & number telephone (615) 266-5781

city or town Chattanooga state Tennessee zip code 37405

Additional Documentation

Submit the following items with the completed form:

Continuation Sheets

Maps

A **USGS map** (7.5 or 15 minute series) indicating the property's location.

A **Sketch map** for historic districts and properties having large acreage or numerous resources.

Photographs

Representative **black and white photographs** of the property.

Additional items

(Check with the SHPO or FPO for any additional items)

Property Owner

(Complete this item at the request of SHPO or FPO.)

name William B. Jabaley, Bessie I. Jabaley, et. al.

street & number Blue Ridge Highway telephone (404) 492-3639

city or town Blue Ridge state Georgia zip code 30513

Paperwork Reduction Act Statement: This information is being collected for applications to the National Register of Historic Places to nominate properties for listing or determine eligibility for listing, to list properties, and to amend existing listings. Response to this request is required to obtain a benefit in accordance with the National Historic Preservation Act, as amended (16 U.S.C. 470 *et seq.*).

Estimated Burden Statement: Public reporting burden for this form is estimated to average 18.1 hours per response including time for reviewing instructions, gathering and maintaining data, and completing and reviewing the form. Direct comments regarding this burden estimate or any aspect of this form to the Chief, Administrative Services Division, National Park Service, P.O. Box 37127, Washington, DC 20013-7127; and the Office of Management and Budget, Paperwork Reductions Projects (1024-0018), Washington, DC 20503.

United States Department of the Interior
National Park ServiceNational Register of Historic Places
Continuation SheetSection number 7 Page 1Center & Abernathy Store Building
Polk County, TennesseeHistoric Appearance

The Center & Abernathy Store building in Copperhill, Polk County, Tennessee is a three story red brick building with a 3 bay facade and corbeled brick cornice and a corner entrance. The building was constructed in 1925 to house the Center & Abernathy Furniture store. The interior of the building was arranged to provide space for room settings of furniture. There were plate glass display windows on the first and second stories. Those on the first story were framed with copper, while on the second they were framed with wood; all of the window trim remains. The side elevations are 8 bays wide. The south elevation has the same copper and wood window frames. The rear elevation is brick with a window into the liquor store, and the north elevation is concealed by the neighboring building.

The interior of the building has changed little since its construction. The raised platforms at the display windows remain, as does the original oak flooring and wainscoting and the pressed metal ceiling. Originally the building had white glass light fixtures, but these remain only on the third floor.

The first story has a large central display area with platforms on each side of the corner door. There are ornate pressed metal ceilings and cornices. After Abernathy died in the 1930s part of the first story was partitioned off. This area housed a package store and pool hall. At the same time a second area was partitioned into a small specialty store. In the 1980s another area was partitioned into a kitchen.

The second story is actually a mezzanine level which provided more furniture display space. The original balustrade was wooden posts with horizontal balusters, this was enclosed circa 1985 to provide space to run heating and air conditioning ducts. The ceiling on the second story is not quite as decorative as the one on the first story. A stairway was added to the second story when the building was converted for restaurant use in 1985.

The third story of the building is the simplest, because it was intended for storage. The metal ceiling is a simple geometric design. The original light fixtures remain. This story has 1/1 wood framed double hung sash windows.

United States Department of the Interior
National Park Service

**National Register of Historic Places
Continuation Sheet**

Section number 7 Page 2

Center & Abernathy Store Building
Polk County, Tennessee

The high sulfuric acid fumes in the air etched the original windows in the building. Those areas that were painted with the store name were protected by the paint and were not etched as deeply. The name "Center & Abernathy Furniture Store" was etched into the window glass by the fumes.

The original 1925 hand operated elevator remains in use in the building, and was certified in 1986 as being operable. The original elevator, doors, and machinery are all in place.

The flooding of 1990 did not cause serious damage to the building because the occupants removed the mud and debris within 24 hours of the flood waters receding. Mud and water were scraped off the flooring before it could do damage, and the plaster wall were repairable. The only damage the flood did was to break one of the windows on the south elevation.

United States Department of the Interior
National Park Service

National Register of Historic Places Continuation Sheet

Section number 8 Page 3

Center & Abernathy Store Building
Polk County, Tennessee

Significance

The Center & Abernathy Store Building in Copperhill, Polk County, Tennessee is eligible for the National Register under criteria A and C for its significance in commerce and architecture.

The Center & Abernathy dry goods store first opened before 1900 in a frame building in downtown Copperhill. The business thrived but its building and inventory were destroyed by the fire of 1910. Center & Abernathy rebuilt on the corner of Ocoee and Grand but specialized in furniture rather than dry goods. The second building was destroyed by fire in 1925 and the existing building was constructed on the same site.

The building was designed for the furniture business. A prominent feature was show windows with raised floors to allow for room displays of furniture. Center & Abernathy continued in business together, until Abernathy's death in 1936. The store continues to do business under the Center & Abernathy name, and in the 1950s the business moved to a modern building away from downtown. It continues to be run by descendants of the original owners.

Center & Abernathy's was, throughout the history of Copperhill, one of the most important and successful businesses operating. From their founding until the mid 1910s it was the largest general merchandise store in Copperhill, then Center & Abernathy decided to specialize in furniture sales. Center & Abernathy's was the only store in the Basin to specialize in the sale of furniture and their prices and credit terms brought customers from Ducktown, Isabella and McCaysville, Georgia as well as from Copperhill. Center & Abernathy was the only store in the Basin to achieve that large a customer base. Their continued existence through two fires, the depression, and the boom and bust cycle of the copper industry established them as a leading business.

Center & Abernathy's was one of the largest distribution points of furniture in the southeastern United States, and was one of the largest retail establishments between Knoxville, Tennessee and Atlanta, Georgia.

Although the third story of the building was originally intended for storage, between 1930 and 1936 the Abernathy Funeral Parlor was located there. The Funeral Parlor moved in 1936, and the space was

United States Department of the Interior
National Park Service

**National Register of Historic Places
Continuation Sheet**

Section number 8 Page 4 Center & Abernathy Store Building
Polk County, Tennessee

used for storage.

The Center & Abernathy Store building is one of the few 1920s buildings which have survived in Copperhill, and is the only one which retains integrity of both the exterior and the interior. The commercial district of Copperhill is composed largely of 1930s and later buildings which have 1950s and 1960s storefronts. The Center & Abernathy Store building retains its simple brick facade with the original fenestration patterns, as well as its original floors, ceilings, doors, windows, and window glass. The only major changes to the building occurred in 1936 when a liquor store was put in the rear, and in the 1970s when a small storefront was added to a single bay of the front. Neither is a large enough change to detract from the integrity of building.

The Center & Abernathy Store Building meets the registration requirements for Commercial Resources for significance in commercial architecture and commerce set forth in the Historic Resources of the Tennessee Copper Basin Multiple Property Documentation Form.

United States Department of the Interior
National Park Service

National Register of Historic Places Continuation Sheet

Section number 9 Page 5

Center & Abernathy Store Building
Polk County, Tennessee

Bibliography

Snyder, Sherri, owner of Basin Pryde Restaurant.
Interview. 24 November 1991.

United States Department of the Interior
National Park Service

National Register of Historic Places Continuation Sheet

Section number 10 Page 6

Center & Abernathy Store Building
Polk County, Tennessee

Verbal Boundary Description and Justification

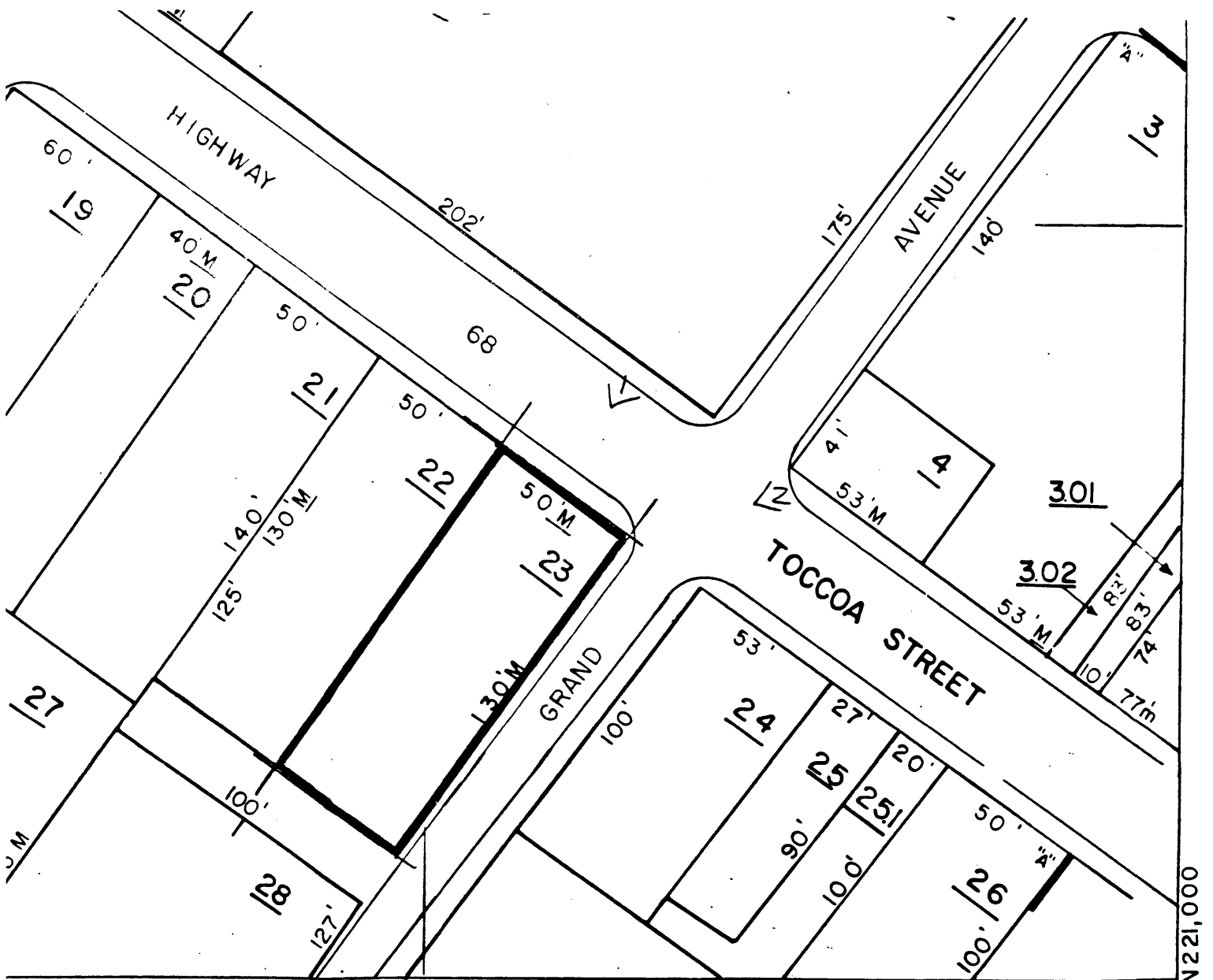
The Center & Abernathy Store building is located on the southwest corner of Ocoee and Grand Streets. It is described on Copperhill, Polk County, Tennessee tax map 136-EA as batch "A" lot 23. The property nominated is the lot historically associated with the building.

United States Department of the Interior
National Park Service

National Register of Historic Places
Continuation Sheet

Section number 10 Page 7

Center and Abernathy Store Building
Polk County, TN



E 2488000



E 2488250 N 221,000

IONS -	
11	
12	
13	

COPPERHILL POLK COUNTY		MAP №
SCALE: 1" = 50'	DISTRICT: 3	136-E-A
DATE OF FLYING:		

United States Department of the Interior
National Park Service

**National Register of Historic Places
Continuation Sheet**

Section number Photo Page 8 Center & Abernathy Store Building
Polk County, Tennessee

Center & Abernathy Store Building
Copperhill, Polk County, Tennessee
Photo by: Karen L. Daniels
Date: November 6, 1991
Neg: Tennessee Historical Commission
Nashville, Tennessee

#1 of 5
East (front) Facade

#2 of 5
Southeast corner

#3 of 5
First story interior, private dining room

#4 of 5
Second story interior

#5 of 5
Third story interior