



1. Model Land Co. (Markland)
2. 102 King Street, St. Augustine (St. Johns), Florida
3. R. H. Steinbach
4. 3-21-83
5. Florida Division of Archives, History and
Records Management
5. South elevation
7. 1 of 31



1. Model Land Co. (Flagler Memorial)
2. 36 Valencia Street, St. Augustine (St. Johns),
Florida
3. R. H. Steinbach
4. 3-21-88
5. Florida Division of Archives, History and
Records Management
6. South and East elevation
7. 2 of 31



1. Model Land Co.
2. 46 Valencia Street, St. Augustine (St. Johns),
Florida
3. R. H. Steinbach
4. 3-21-83
5. Florida Division of Archives, History and
Records Management
6. South elevation
7. 3 of 31



1. Model Land Co. (FEC Offices)
2. 1 Malaga Street, St. Augustine (St. Johns),
Florida
3. R. H. Steinbach
4. 3-21-83
5. Florida Division of Archives, History and
Records Management
6. East elevation
7. 4 of 31



1. Model Land Co. (FPL Offices)
2. 50 Malaga Street, St. Augustine (St. Johns),
Florida
3. R. H. Steinbach
4. 3-21-83
5. Florida Division of Archives, History and
Records Management
6. West elevation
7. 5 of 31



1. Model Land Co.
2. 38 Carrera Street, St. Augustine (St. Johns),
Florida
3. R. H. Steinbach
4. 3-21-83
5. Florida Division of Archives, History and
Records Management
6. South elevation
7. 6 of 31



1. Model Land Co. (Baptist School Bldg.)
2. 28 Sevilla Street, St. Augustine (St. Johns),
Florida
3. R. H. Steinbach
4. 3-21-83
5. Florida Division of Archives, History and
Records Management
6. South and East elevation
7. 7 of 31



1. Model Land Co.
2. 20 Valencia Street, St. Augustine (St. Johns),
Florida
3. R. H. Steinbach
4. 3-21-83
5. Florida Division of Archives, History and
Records Management
6. South elevation
7. 8 of 31



1. Model Land Co.
2. St. Augustine (St. Johns), Florida
3. R. H. Steinbach
4. 3-21-83
5. Florida Division of Archives, History and
Records Management
6. Saragossa from Cordova
7. 9 of 31



1. Model Land Co.
2. St. Augustine (St. Johns), Florida
3. R. H. Steinbach
4. 3-21-83
5. Florida Division of Archives, History and
Records Management
6. West end of Saragossa looking west
7. 10 of 31



1. Model Land Co.
2. St. Augustine (St. Johns), Florida
3. R. H. Steinbach
4. 3-21-83
5. Florida Division of Archives, History and Records
Management
6. North side Saragossa looking west from
Riberia
7. 11 of 31



1. Model Land Co.
2. 32 Saragossa Street, St. Augustine (St. Johns),
Florida
3. R. H. Steinbach
4. 3-21-83
5. Florida Division of Archives, History and
Records Management
6. South elevation
7. 12 of 31



1. Model Land Co.
2. St. Augustine (St. Johns), Florida
3. R. H. Steinbach
4. 3-21-83
5. Florida Division of Archives, History and
Records Management
6. Mulvey looking north
7. 13 of 31



1. Model Land Co.
2. St. Augustine (St. Johns), Florida
3. R. H. Steinbach
4. 3-21-83
5. Florida Division of Archives, History and
Records Management
6. Lemon looking west from Riberia Street
7. 14 of 31



AWARDS

1. Model Land Co.
2. St. Augustine (St. Johns), Florida
3. R. H. Steinbach
4. 3-21-83
5. Florida Division of Archives, History and
Records Management
6. Riberia looking south across King Street
7. 15 of 31



1. Model Land Co. (Ponce de Leon Hotel)
2. 74 King Street, St. Augustine (St. Johns),
Florida
3. R. H. Steinbach
4. 3-21-83
5. Florida Division of Archives, History and
Records Management
6. South elevation
7. 16 of 31



1. Model Land Co. (Casa Amarylla)
(Lewis House)
2. 6 Valencia St., St. Augustine
(St. Johns County), FL
3. R.H. Steinbach
4. 4/83
5. DAHRM (9-1)
6. W & S/elevations
7. 17 of 31



1. Model Land Co.
2. 35 Valencia St., St. Augustine
(St. Johns County), FL
3. R.H. Steinbach
4. 4/83
5. DAHRM 9-2
6. N^o/elevation
7. 18 of 31



1. Model Land Co. (YMCA)
2. 59 Valencia St., St. Augustine
(St. Johns County), FL
3. R.H. Steinbach
4. 4/83
5. DAHRM (9-3)
6. N & W/elevations
7. 19 of 31



1. Model Land Co. (Marsh House)
2. 69 Valencia St., St. Augustine
(St. Johns County), FL
3. R.H. Steinbach
4. 4/83
5. DAHRM (9-5)
6. S & E/elevations
7. 20 of 31



1. Model Land Co. (FEC Railway Park)
- 2.
3. R.H. Steinbach
4. 4/83
5. DAHRM (9-8)
6. S & E/elevations
7. 21 of 31



1. Model Land Co.
2. 25 Riberia St., St. Augustine
(St. Johns County), FL
3. R.H. Steinbach
4. 4/83
5. DAHRM (9-9)
6. W/elevation
7. 22 of 31



1. Model Land Co.
2. 18 Saragossa St., St. Augustine
(St. Johns County), FL
3. R.H. Steinbach
4. 4/83
5. DAHRM (9-10)
6. S & W/elevations
7. 23 of 31



1. Model Land Co. (Ancient City Baptist Church)
2. 30 Carrera St., St. Augustine (St. Johns County), FL
3. R.H. Steinbach
4. 4/83
5. DAHRM (9-11)
6. S & E/elevations
7. 24 of 31



1. Model Land Co. (Spades House)
2. 33 Sevilla St., St. Augustine
(St. Johns County), FL
4. 4/83
5. DAHRM (9-12)

6. N & W/elevations
7. 25 of 31



1. Model Land Co. (Grace United Methodist Church)
2. 8 Carrera St., St. Augustine (St. Johns County), FL
4. 4/83
5. DAHRM (9-13)
6. W & S/elevations
7. 26 of 31



1. Model Land Co. (Felix de Crano House)
2. 44 Sevilla St., St. Augustine
(St. Johns County), FL
3. R.H. Steinbach
4. 4/83
5. DAHRM (9-15)
6. S & E/elevations
7. 27 of 31

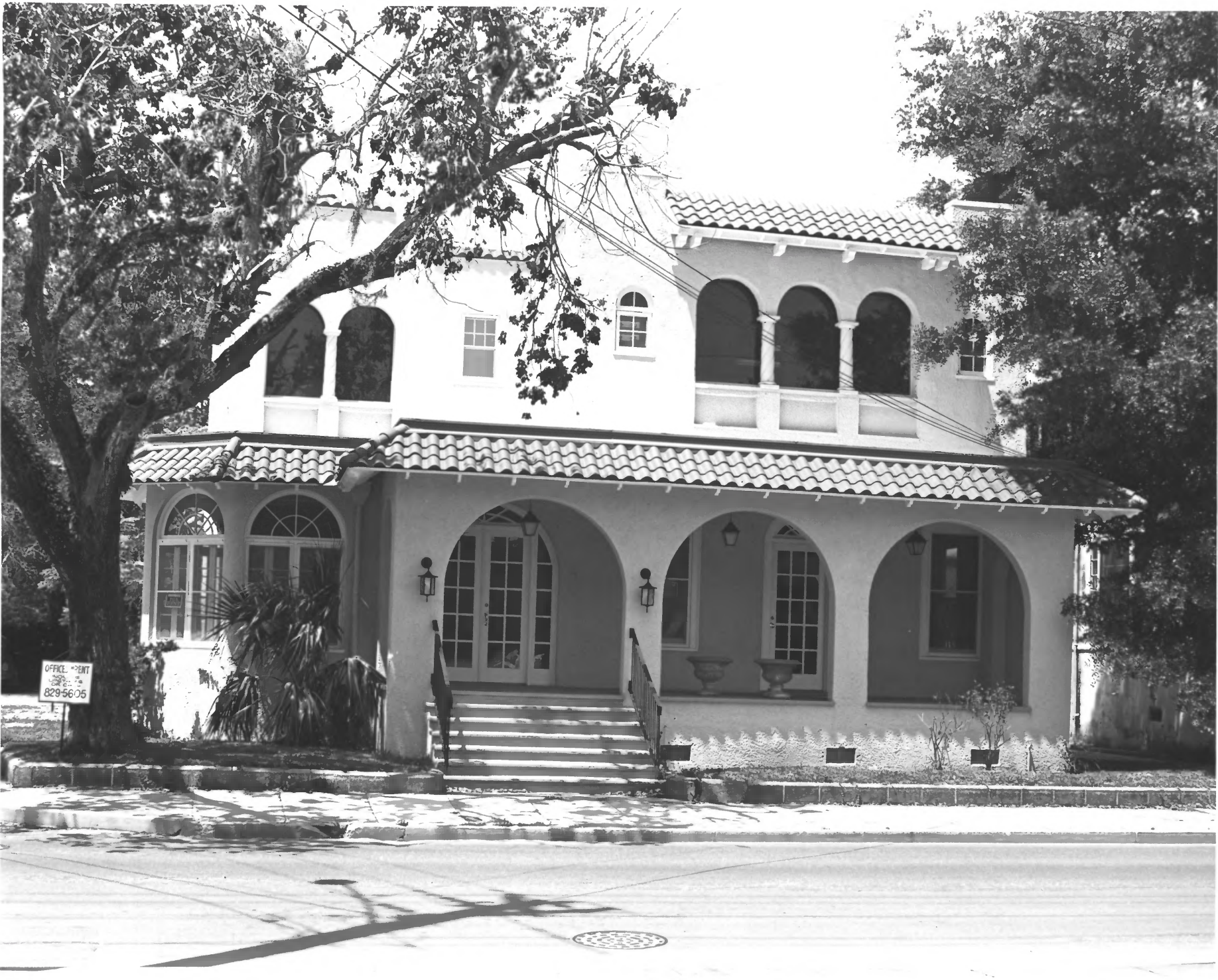


1. Model Land Co. (Ingraham House/
Presbyterian Manse)
2. 32 Sevilla St., St. Augustine
(St. Johns County), FL
3. R.H. Steinbach
4. 4/83
5. DAHRM (9-16)
6. E/elevation
7. 28 of 31



1. Model Land Co. (Ponce de Leon Cottage)
2. 9 Carrera St., St. Augustine
(St. Johns County), FL
3. R.H. Steinbach
4. 4/83
5. DAHRM (9-17)

6. N/elevation
7. 29 of 31



OFFICE - RENT
829-6605

1. Model Land Co.
2. 20 Cordova St., St. Augustine
(St. Johns County), FL
3. R.H. Steinbach
4. 4/83
5. DAHRM (9-19)
6. E/elevation
7. 30 of 31



1. Model Land Co. (Tolomato Cemetery)
2. Cordova St., St. Augustine
(St. Johns County), FL
3. R.H. Steinbach
4. 4/83
5. DAHRM (9-20)
6. S & E/elevations
7. 31 of 31