

MAR 21 1900

See photograph # 1,2,3

## MONTANA HISTORICAL AND ARCHITECTURAL INVENTORY

Legal Description: Portion of Section 14, T4S R22E  
Address: Main Street road south of Joliet  
over Rock Creek

Ownership: Name: Carbon County  
Address: Carbon County Courthouse  
Red Lodge, Montana

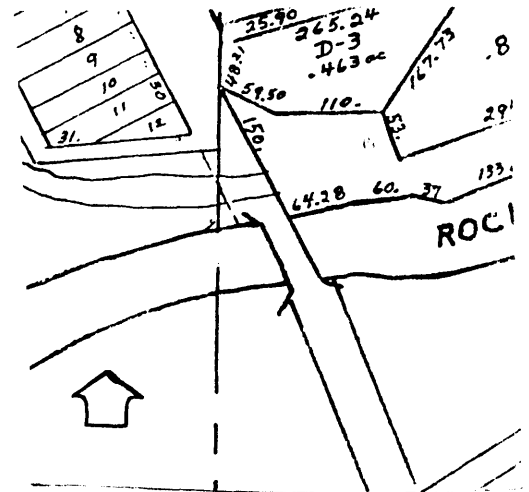


Roll#11/Frame#13

Historic Name: Joliet bridge  
Common Name: Joliet bridge  
Date of Construction: 1901  
Architect: William S. Hewett  
Builder: William S. Hewett  
Original Owner: Carbon County  
Original Use: vehicular bridge  
Present Use: vehicular bridge

### Research Sources

Abstract of Title: Carbon County Courthouse  
Plat Records: not applicable  
Tax Records: not applicable  
Building Permits: not available  
Sewer/Water Permits: not available  
City Directories: 1905-1922  
Sanborn Maps: 1907, 1912, 1927  
Newspapers: Carbon County Sentinel  
Other: Carbon County Commissioners Record, 1901  
Quivik, Frederic L. Historic Bridges of Montana



Location Map

### HISTORICAL AND/OR ARCHITECTURAL SIGNIFICANCE:

This steel truss bridge is significant to the town of Joliet by furnishing a convenient access for the agricultural community to the town during the initial development period of Joliet. The bridge provided the access to the Northern Pacific railroad line, the Carbon County Milling Company and to the businesses and educational, religious and social elements in the town of Joliet. The bridge is also associated with William S. Hewett, one of the prominent Minneapolis bridge builders in Montana.

### HISTORICAL DESCRIPTION:

In December, 1900, the Carbon County Commissioners invited bids for the purpose of an iron bridge on Rock Creek near Joliet. In January, 1901, the contract was given to William S. Hewett who submitted a low bid of \$4500.00. In June, 1901, a special meeting of the county commissioners was held for building an extension of the Joliet bridge and Hewett, being the sole bidder, was awarded the contract "to built a superstructure for the 30 feet combination span at Joliet at the end of the bridge for \$750.00. Apparently there must have been a miscalulation in the initial survey.

By August, the Carbon County Sentinel reported that the "new iron bridge at Joliet is beginning to look substantial and when completed it will be one of the best bridges in the county."

William S. Hewett was one of the most prominent bridge builders in Montana. He formed his own bridge company in 1897 and was headquartered in Minneapolis. Hewett was responsible for other bridges in the area, such as the Silesia and Fishtail bridge.

**PHYSICAL DESCRIPTION:**

This multiple span vehicular bridge crosses Rock Creek directly south of Joliet. The main span is a typical pin-connected steel Pratt through truss, approximately 120 feet in length and supported by concrete abutments and cylindrical piers. The approach spans on the south end are comprised of wood stringers supported by timber pile bents and have replaced the original pony truss approach span. The deck is of bridge plank with an asphalt wearing surface.

**INTEGRITY:**

The bridge has excellent integrity.

**FORM PREPARED BY:**

Name: Joan Louise Brownell  
Address: Carbon County Historic Preservation Office  
Red Lodge, Montana  
Date: August, 1985

**GEOGRAPHICAL INFORMATION:**

Acreage: less than 1 acre  
Boundaries: approx 110' south from the ne corner of lot 12, Block 7, Second Addition, Joliet to nw corner of bridge; from this point, 120' se across Rock Creek, 75' ne across width of county road, 120' nw across Rock Creek and 75' sw to beginning point.  
USGS Quad: Fromberg, Montana/7.5 minute/1956  
UTM's: Zone 12 6 58 200 Easting  
50 38 860 Northing