



4615

United States Department of the Interior
National Park Service

National Register of Historic Places Registration Form

This form is for use in nominating or requesting determinations for individual properties and districts. See instructions in National Register Bulletin, *How to Complete the National Register of Historic Places Registration Form*. If any item does not apply to the property being documented, enter "N/A" for "not applicable." For functions, architectural classification, materials, and areas of significance enter only categories and subcategories from the instructions.

1. Name of Property

Historic Name: Five Points South Historic District (3rd Expansion) (BI & AD)
Other names/ site number: _____
Name of related multiple property listing: N/A
(Enter N/A if property is not part of a multiple property listing)

2. Location

Street & number: Generally bounded by 10th Ave. S, 21st Pl. S, 15th Ave. S, & 17th St. S
City/Town: Birmingham State: AL County: Jefferson
Not for Publication: _____ Vicinity: _____

3. State/Federal Agency Certification

As the designated authority under the National Historic Preservation Act, as amended, I hereby certify that this x nomination request determination of eligibility meets the documentation standards for registering properties in the National Register of Historic Places and meets the procedural and professional requirements set forth in 36 CFR Part 60. In my opinion, the property x meets does not meet the National Register criteria.
I recommend this property be considered significant at the following level(s) of significance:
 National Statewide x Local

Applicable National Register Criteria: x A B x C D

<u>Bee Anne Wofford</u>	/Deputy State Historic Preservation Officer	<u>10/01/19</u>
Signature of certifying official/Title		Date
Alabama Historical Commission		
State or Federal agency/bureau or Tribal Government		

In my opinion, the property <u> </u> meets <u> </u> does not meet the National Register criteria.	
Signature of commenting official	Date
Title	State or Federal agency/bureau or Tribal Government

4. National Park Service Certification

I hereby certify that this property is:
 entered in the National Register
 determined eligible for the National Register
 determined not eligible for the National Register
 removed from the National Register
 other (explain): _____

[Signature] Signature of the Keeper 11/18/19 Date of Action

Five Points South Historic District (BI & AD)
Name of Property

Jefferson, AL
County and State

5. Classification / Ownership of Property: (check as many boxes as apply)

- Private
- Public-Local
- Public-State
- Public-Federal

Category of Property: (check only one box)

- Building(s)
- District
- Site
- Structure
- Object

Number of Resources Within Property: (do not include previously listed resources in the count)

Contributing	Non-Contributing	
30	7	Buildings
0	0	Sites
0	0	Structures
0	0	Objects
30	7	TOTAL

Number of contributing resources previously listed in the National Register 126

6. Function or Use / Historic Functions: (enter categories from instructions)

- COMMERCE/TRADE/business; professional; specialty store
- DOMESTIC/multiple dwelling
- DOMESTIC/single dwelling
- RECREATION AND CULTURE/theatre
- RELIGION/religious facility
- EDUCATION/school

Current Functions: (enter categories from instructions)

- COMMERCE/TRADE/business; professional; specialty store
- DOMESTIC/multiple dwelling
- DOMESTIC/single dwelling
- RELIGION/religious facility

Five Points South Historic District (BI & AD)
Name of Property

Jefferson, AL
County and State

7. Architectural Classification: (enter categories from instructions)

- LATE VICTORIAN/Italianate
- LATE 19th AND 20TH CENTURY REVIVALS /Colonial Revival
- LATE 19th AND 20TH CENTURY REVIVALS /Tudor Revival
- LATE 19th AND 20TH CENTURY REVIVALS /Mission/Spanish Colonial Revival
- LATE 19th AND EARLY 20TH CENTURY AMERICAN MOVEMENTS/Bungalow/Craftsman
- MODERN MOVEMENT/Moderne
- MODERN MOVEMENT/Mid-Century Modern

Materials: (enter categories from instructions)

Principal exterior materials of the property:
BRICK, WOOD, STUCCO, STONE, ASPHALT, CAST IRON

Narrative Description

(Describe the historic and current physical appearance and condition of the property. Describe contributing and noncontributing resources if applicable. Begin with a **summary paragraph** that briefly describes the general characteristics of the property, such as its location, type, style, method of construction, setting, size, and significant features. Indicate whether the property has historic integrity.)

Summary Paragraph

This nomination represents the 3rd expansion to the Five Points South Historic District.

The Five Points South Historic District is located in the Birmingham Southside neighborhood immediately west of the Magnolia Avenue South Historic District and incorporates a mix of commercial, religious, and residential resources. The irregularly shaped area contains approximately 65 acres of land. The topography of the district is hilly and rises to south and drops to the east. Commercial buildings at the center portion of the district are typically set at zero lot lines and are separated from the street by concrete sidewalks. Residential properties along 13th Ave. S typically have front, side, and rear yards with a mix of mature shrubs and trees.

Contributing resources include 30 commercial buildings (30%), 30 dwellings (30%), 19 apartment buildings (19%), 10 office buildings (10%), 6 churches (6%), 2 ancillary buildings (2%), 1 parking garage, 1 theatre, and 1 school.

Narrative Description

The Five Points South Historic District is that segment of the city's Southside Highlands neighborhood which contains an exceptional 1920s commercial center, the best concentration of turn-of-the-century houses in the city, an outstanding 1920s Colonial Revival school, and many churches, temples, and apartment houses of notable design quality. Located just a dozen blocks south from the heart of the central business district, on a rising foothill of Red Mountain, the district's density reflects its development history as an early suburban neighborhood that became a commercial center in the 1920s.

The hub of the district is the Five Points intersection, defined by five buildings carefully sited to create a unique urban space: the curved-facade, two-story storefront of glazed brick (Studio Arts Building, now replaced with a modern building), two large limestone-faced Art Deco storefronts (Munger Building, Resource #125; Ware Building, Resource #121), the Highlands United Methodist Church (Resource #124; Photo #2, Right; #3) and the Spanish Stores (Resource #126; Photo #4), both designed in the Spanish Revival style. These styles are echoed in buildings just a block or two off the Circle: the Art Deco style Piggly Wiggly (Resource #116, only the storefront facing remains as part of a new building Photo #13), skyscraper Medical Arts Building (Resource #119; Photo #01, Left; #14), and Fred Jones Building (Resource #5; Photos #10, Right; #11); and the Italian Revival style Highlands United Methodist Education Building (now part of Resource # 124) and Shepherd-Sloss Building (Resource #141; Photo #07, Right).

Lining the 1000 block of 20th Street South and the 1900 block of 11th Avenue South adjacent to the Circle are several one and two-story commercial storefronts, primarily brick (Resources #150 and 151), built between 1898 and 1922; a Tudor

Five Points South Historic District (BI & AD)

Jefferson, AL

Name of Property

County and State

Revival- influenced building (c. 1925, Resource #8); and the Carrara glass-faced Five Points Theatre (c. 1922; Resource #9; Photo #09, 4th from Right).

Besides Highlands United Methodist Church, four other churches and one temple are in the district. Anchoring its northwest corner is the Roman Revival style Southside Baptist Church (Resource #83; Photo #53). Inside the district are the South Highland Presbyterian Church, one of the city's oldest churches (1892, Resource #146; Photo #36), and Temple Emanu-El (Resource #148) across the street from each other on Highland Avenue. One block to the northwest is the First Church of Christ, Scientist (Resource #14) and two blocks to the west, the neighborhood's oldest church, the English Gothic Revival style St. Mary's-on-the-Highlands Episcopal Church (1892, Resource #19; Photo #51).

Just a block off the Five Points intersection are the district's three skyscraper apartments. The oldest, Terrace Court (1907, Inv. #129; Photo #5, Left) is a rare early example of the form. The Dulion (1920, Resource #13) and LaSalle (1926, Resource #12) rise several stories behind the Highlands Methodist Church, adding a strong vertical presence to the heart of the district.

The district's residential core (the pocket formed in its southwestern corner between 12th and 15th avenues south) provides a counterpoint to the urban density of storefronts, skyscraper apartments, and monumental religious structures with its domestic-scale architecture, grassy yards and tree-lined streets. It contains three houses dating from the Town of Highland period (1887-93): the Boddie House (c. 1887, Gone), McCants House (1888, Resource #91), and the Nabers House (1890, Gone) in addition to ten other houses dating before 1902 in a range of turn-of-the-century styles. It also includes two apartments of notable design quality dating from c. 1910, the Levert (Resource #136) and Dian (Resource #133), and three from the 1920s.

The once solidly residential Highland Avenue now contains, in addition to the Hassinger House (1898, Resource #144), a Jewish temple and a church, two apartment houses, and a handsome Renaissance Revival style office building erected in the 1920s (Southern Life & Health Insurance Company Building, 1927, Resource #150). Interspersed among these buildings are a grouping of predominantly mid-20th century commercial buildings that include the Mid-Century Modern style Southern Institute (c. 1957, Resource #142), the Southern Institute School of Interior Design (c. 1955, Resource #143), the Leo Building (1958, Resource #152; Photo #29), and an office building at 2144 Highland Ave. S (1960, Resource #154). Also prominent along Highland Avenue are a 14-story tower that was constructed c. 1957 as a Sheraton Motor Inn (later converted into apartments, Resource #147; Photo #32) and Southern Life and Health Insurance Company Building's second building designed by Davis, Speake and Associates in the Modern style and constructed in 1973 (Resource #149). In the mid-late 1960s, two additional larger office buildings were constructed east of Richard Arrington Jr. Blvd.: Magnolia Office Park (1966, Resource #155) on the south side of Magnolia Avenue S and the Magnolia Office Park Plaza Building (1966, Resource #15). Another high-rise apartment building, the 12-story Birmingham Building Trades Tower, is located along the north side of Magnolia Ave. S. west of Richard Arrington Jr. Blvd. (1968 Resource #2; Photo #20).

The most common building material is brick. In the buildings on and near Five Points Circle, limestone, stucco, terracotta, colored glazed brick, and red-tile roofs are also characteristic. Clapboard, shingles, and brick are common for houses. Sandstone, limestone marble, and granite (along with brick) are used in the landmark churches and temple Carrara glass is used most effectively on the Five Points Theatre Building (c. 1922; Resource #9; Photo #09, 4th from Right).

The 1991 expansion of the district included the following additional description:

The original Five Points Historic District nomination (NRHP 08/28/86) describes the district as an early twentieth century suburban neighborhood with a commercial enclave centered around the five points intersection located in the northern section of the district. The district has a collection of skyscraper apartment buildings located primarily on the eastern edge of the district; a school building on the west- ern edge; and religious buildings scattered throughout the northern half of the district. The main residential core, featuring early twentieth century Colonial Revival, Craftsman, and Tudor Revival houses and apartments, is located in the southern portion of the district. The district is locally significant for its exceptional collection of early twentieth century commercial and residential architecture constructed between 1887 through 1936.

The Five Points South Historic District has been expanded approximately two and one half blocks to the south to include an additional 47 contributing buildings to the main residential core of the district. The southern edge of the original district, bounded by 15th Avenue, has been extended south down 19th Street and 16th Avenue for several blocks. The expanded

Five Points South Historic District (BI & AD)

Jefferson, AL

Name of Property

County and State

area takes in an isolated pocket of the remaining early twentieth century homes associated with the Five Points South neighborhood.

The northern border of the expanded area ties into the existing Five Points South Historic District. The eastern border is limited by new commercial and office development on Montgomery Highway (21st Street). The southern border is a clear visual break at the sharp corner at the top of the hill on 16th Avenue, including a space where there are no structures. The western border, behind the houses, on the west side of 19th Street, butts up against Anderson Place Historic District. Although the western border of the expanded area runs along a small portion of the eastern edge of Anderson Place Historic District, there is no vehicular link between the two districts from 19th Street.

The resources located in the expanded area are of similar building types, styles, period of construction, materials, and setting as found in the original core residential area. The expanded area has 42 contributing buildings, of which 34 were originally detached, single family homes and 8 are residential apartment buildings. Most of the residences are either one or two stories in height and the apartment buildings are three stories in height. The styles of construction range from Queen Anne Victorian, Colonial Revival, Tudor Revival, Spanish Revival, and modest Craftsman. The earliest building constructed in the expanded area dates from 1897, whereas the other buildings were constructed between 1910 through 1929. Like the residential buildings located in the original district, clapboard, shingles, brick and stucco are the most prevalent building materials in the district. Because the expanded area is an extension of the original district, the expanded area has the same hilly terrain, small front yards, retaining walls, and tree-lined streets as the original district.

The expanded area has only 5 noncontributing resources. Four of the buildings are of modern construction dating after the period of significance. One of the non-contributing buildings is a historic house which has been severely altered when divided into apartments. The five noncontributing buildings in no way affect the integrity of the original district. Most of the contributing buildings in the expanded area have retained their integrity and have experienced only slight modern alterations. There are no empty lots or parking lots in the expanded area.

The district contains the following street numbers:

10th Ave. S	1901-2027
11 th Ave. S	1900-2112
11 th Ct. S	2112-2155
12th Ave. S	1825-1910
13 th Ave. S	1637—2023
14 th Ave. S	1900-2112
15 th Ave. S	2018
18 th St. S	100-1324
19 th St. S	1006-1400
20th St. S	941-1401
Cobb Ln.	1309-1310
Highland Ave. S	2000-2144
Magnolia Ave.	1021
Richard Arrington Jr. Blvd.	1010-1501
Ridge Park Ave. S	2101-2103

Inventory

The district includes 164 resources, 147 (90%) of which are contributing and 17 are noncontributing (10%). Resources date from the following periods: 1888-1910, 41 (28%); 1911-1930, 68 (46%); 1931-1945, 8 (5%); 1946-1961, 18 (12%); 1962-1970, 11 (7%); and after 1970, 1 (1%). 118 of the resources were previously listed in the National Register, 107 of which are contributing and 11 of which are noncontributing.

The Five Points South Historic District was amended and expanded in 1986 and 1991. In the 30 years that have elapsed since the 1986 update, the district has seen a fair degree of change and is currently under significant development pressure.

Five Points South Historic District (BI & AD)
Name of Property

Jefferson, AL
County and State

Of the 137 resources recorded in the 1991 nomination update, 118 remain in this inventory. Two additional resources are located within the previously nominated area that were not recorded in either nomination.

Of the 118 Resources:

- Contributing, similar to 1991 conditions – 94 (80%)
- Contributing, reclassified from noncontributing due to expanded period of sign. – 9 (8%)
- Contributing, reclassified from noncontributing for other reasons – 3 (3%)
- Contributing, 1 resource reclassified from a building to an object (#117) – 1 (1%)
- Noncontributing, similar to 1991 conditions – 6 (5%)
- Noncontributing, altered or replaced since 1986 – 5 (4%)

19 resources recorded in the 1986 nomination have been deleted or reclassified from the 1986 inventory:

- Parking/vacant lot, remove from Inventory – 6 (32%)
- GONE, vacant - delete from inventory – 13 (78%)

2 resources were reclassified as they were inventoried as part of a larger resource: 2 (9%)

This inventory has added 38 resources. Of these, two were located within the original 1986 district at the time of the nomination but were not recorded.

- Contributing, within expanded district – 29 (82%)
- Contributing, within expanded district (#153) – 1 (3%)
- Noncontributing, within expanded district – 6 (11%)
- Noncontributing, built after 1991 – 2 (5%)

This inventory has added 8 additional site numbers to resources that were recorded in the previous nominations as single resources: #49, Saipan Apartments; Letchworth Apartments, #61-67. One resource previously listed as two resources was combined under a single resource number (#125)

Note: 21st Street S was renamed Richard Arrington Jr. Boulevard in 2001.

Schneider Historic Preservation, LLC conducted a historic resource survey of the district and its immediate surroundings in July 2018 to: 1) identify changes that have occurred in the resource inventory since 1986 and 2) to determine if any boundary adjustments are indicated by changes to resources or an expanded period of significance.

Symbology:

- † = new contributing resource included in boundary increase
- = new noncontributing resources included in boundary increase

10th Ave. S

1. 1901 10th Ave. S. America Fore Insurance Group Building, 1954, **Contributing †**
One-story Mid-Century Modern style commercial building with a flat roof; brick veneer with cast concrete banding and corner pavilions; banded aluminum windows at the façade with storefront systems at the western entrance bay.
2019 Update: This resource was outside the boundary of the 1986 and 1991 nominations.
2. 2016 10th Ave. S. Five Points South Office Bldg., 1968, **Contributing †**
Two-story Mid-Century Modern style commercial building with a flat roof; brick veneer with cast concrete banding; recessed aluminum windows storefront systems at the lower façade with narrow vertical windows at the upper level.
2019 Update: This resource was outside the boundary of the 1986 and 1991 nominations.
3. 2021 10th Ave. S. Birmingham Building Trades Towers, 1969, **Contributing †**

Five Points South Historic District (BI & AD)

Jefferson, AL

Name of Property

County and State

Charles H. McCauley Associates, Architect; Robins Engineering, Inc., General Contractor; 12-story steel-framed high-rise apartment building that is clad with brick veneer and cast concrete with a flat built-up roof; principal facades face 10th Ave. S and south to Magnolia Avenue S; north elevation is separated into eight bays by concrete pilasters that rise to a continuous concrete band at the roofline, a similar concrete band extends the full width of the building above the ground floor; vertical bands of windows are set at the outer edges of each bay and extend from the 1st through the 11th floors (floor levels are numbered ground and 1 through 11) with brick continuous veneer walls between. Note that the original name of the resources was the plural Birmingham Building Trades Towers despite there only having been one building planned and constructed. 2019 Update: This resource was outside the boundary of the 1986 and 1991 nominations.

11th Ave. S

4. 1900 11th Ave. S. Commercial Strip, 1964, **Noncontributing** ■
One-story brick veneer commercial strip with a flat roof, aluminum framed storefront systems; storefronts appear to be later alterations as does the stuccoed boxed projection at the upper façade (c. 2000). 2019 Update: This resource was outside the boundary of the 1986 and 1991 nominations.
5. 1901 11th Ave. S. Fred Jones Building, 1928, **Contributing**
Architect: Miller & Martin; Art Deco style; two stories; brick faced with limestone. The first Art Deco style building erected in the Five Points district. The R. S. Munger family had it built for Fred S. Jones, who operated an ice cream shop and delicatessen there for over 40 years. An excellent local example of popular Art Deco motifs, particularly the sunflower. 2019 Update: Resource # 27 in the 1986 nomination.
6. 1904 11th Ave. S. Commercial Strip, 1964, **Noncontributing** ■
One-story brick veneer commercial strip with a flat roof, aluminum framed storefront systems; storefronts appear to be later alterations as does the stuccoed boxed projection at the upper façade (c. 2000). 2019 Update: This resource was outside the boundary of the 1986 and 1991 nominations.
7. 1905-1909 11th Ave. S Five Points Bowling Center, c. 1939, **Contributing**
Architect: Miller and Martin; Art Moderne storefront style; one story; brick faced with terracotta, and Carrara glass. Designed by the same firm that designed most of the Five Points Circle commercial buildings in the 1920s, it is compatible in age, style, and materials with contributing buildings nearby. 2019 Update: Resource # 28 in the 1986 nomination. This resource was listed as conditionally contributing in the 1986 nomination.
8. 1908-1912 11th Ave. S Commercial Building, c. 1925, **Contributing**
Tudor Revival-influenced style; two stories; brick with masonry inset, cast stone finials at roofline, and tile roof. 2019 Update: Resource # 20 in the 1986 nomination.
9. 1918 11th Ave. S. Five Points Theatre Building (U.S. Post Office), c. 1922, **Contributing**
Remodeled 1936, Miller & Martin (1936 remodeling); Art Deco style; two stories; brick refaced with Carrara glass. This was the neighborhood's only movie theater. One of the best examples of a Carrara glass facade in the city. Contributing. 2019 Update: Resource #19 in the 1986 nomination (Photo #09, 4th from Right).
10. 1920 11th Ave. S. Shropshire & Daniel Building, c. 1922, **Contributing**
Commercial storefront style; one story, brick with limestone cornice and roofline cap, lower half of 1922 refaced with artificial stone. 1920 housed Five Points' popular specialty grocery, Shropshire & Daniel, between 1922 and 1939. 2019 Update: Resource #18 in the 1986 nomination (Photo #09, 3rd from Right).
11. 1924 11th Ave. S. Points Grocery Building, c. 1913, **Contributing**
Commercial storefront style; two stories; brick first story refaced with Carrara glass. Brick corbelling at cornice line; one of the oldest commercial buildings in the neighborhood. 2019 Update: Resource #17 in the 1986 nomination (Photo #09, 2nd from Right).

Five Points South Historic District (BI & AD)

Jefferson, AL

Name of Property

County and State

12. 2020 11th Ave. S. LaSalle Apartments, 1926, **Contributing**
Architect: Gallup & Joy, Chicago; French Renaissance Revival style; nine stories; brick with masonry facing on first two stories, limestone sills and window trim. Terracotta medallions enrich street-level masonry facing. Designed by Scott Joy after he left Birmingham. 2019 Update: Resource #39 in the 1986 nomination.
13. 2030 11th Ave. S. Dulion Apartments, 1920, **Contributing**
Architect: Brooke B. Burnham; Classical influenced-style; eight stories; brick, first two stories faced with limestone; limestone cornice and sills; terracotta molding. 2019 Update: Resource #38 in the 1986 nomination.
14. 2031 11th Ave. S. First Church of Christ, Scientist, 1911, **Contributing**
Architect: Joseph C. Turner; Jeffersonian Roman Revival style; one story; stucco with wood and stone trim. This was the First Christian Science Church in Alabama (organized in 1899). This 1911 interpretation of the Jeffersonian Roman Revival style, distinguished by Ionic columns and classical moldings, is rare for Birmingham. 2019 Update: Resource #37 in the 1986 nomination.
15. 2112 11th Ave. S. Magnolia Office Park Plaza Building, 1968, **Contributing †**
Five-story modern office building that visually floats atop a raised parking deck; flat roof; concrete structural frame with large recessed wall surfaces with fixed windows. 2019 Update: This resource was outside the boundary of the 1986 and 1991 nominations.

11th Ct. S

16. 2112 11th Ct. S. Anderson, Frank, House. 1923, **Contributing †**
Architect: Frank Hartley Anderson; Three-story stucco Mediterranean Revival style house with a flat roof; set into a hillside, with a former garage opening and entrance at the lower level along the street, the site slopes upward to the rear to a patio with an arched opening; rough texture stucco walls with clay tile parapet caps. From 1952 until 1991, the house was owned by Glenn Nichols, a popular piano teacher, and was the site of his studio. Frank Hartley Anderson designed the house for his own residence. 2019 Update: This resource was outside the boundary of the 1986 and 1991 nominations (Photo #27).
17. 2155 11th Ct. S. Charleston Apartments. 1927, **Contributing †**
Architect: Bern Price. Four-story Classical Revival style apartment building on a raised foundation to the rear; brick with stone banding and details, 6/6 windows. 2019 Update: This resource was outside the boundary of the 1986 and 1991 nominations (Photo #28).

12th Ave. S

18. 1825 12th Ave. S. Ramsey High School Gymnasium, 2008, **Noncontributing ■**
Modern two-story brick veneer gymnasium building with a flat roof. 2019 Update: This resource was constructed after the 1986 nomination.
19. 1910 12th Ave. S. St. Mary's-on-the-Highlands Episcopal Church, 1892, **Contributing**
1892 (sanctuary); 1927 (Parish House), John Sutcliffe (sanctuary); English Gothic style; two stories; Kansas sandstone. The oldest church in the district, it was built at the same time as the downtown Episcopal Church of the Advent (completed 1893). One of the best examples of English revival ecclesiastical architecture in the city, its architect was a native of Great Britain. 2019 Update: Resource #42 in the 1986 nomination (Photo #51).

13th Ave. S

20. 1637 13th Ave. S. House, c. 1935, **Contributing †**
One story frame Craftsman style gable front form dwelling with a front-facing gable composition shingle roof with angle bracketed eaves; full facade recessed porch with tapered wood supports on brick pedestals; central entrance flanked by single 6/1 windows, similar windows at the side elevations; applied aluminum siding (c. 1970). 2019 Update: This resource was outside the boundary of the 1986 and 1991 nominations.

Five Points South Historic District (BI & AD)

Jefferson, AL

Name of Property

County and State

21. 1639 13th Ave. S. House. c. 1935, **Contributing †**
One story frame Craftsman style gable front form dwelling with a front-facing gable composition shingle roof with angle bracketed eaves; full facade recessed porch with wood supports on brick pedestals; central entrance flanked by single 6/1 windows, similar windows at the side elevations; wood novelty siding with shingles at the gable end. 2019 Update: This resource was outside the boundary of the 1986 and 1991 nominations (Photo #48).
22. 1701 13th Ave. S. House c. 1950, **Contributing †**
One-story frame L-shaped Mid-century Modern style duplex with a hipped composition shingle roof; entrance bay hipped porches at the north and west elevations with entrances flanked by double aluminum windows; painted brick veneer exterior walls. 2019 Update: This resource was outside the boundary of the 1986 and 1991 nominations.
23. 1703 13th Ave. S. Sudduth, E. W., House. c. 1920, **Contributing**
One-story frame Bungalow, gable roof with bracketed cross gable over porch supported by tapered rubble stone pier. (original owner, E.W. Sudduth). 2019 Update: Resource #83 in the 1986 nomination.
24. 1705 13th Ave. S. Danforth, J.B., House. c. 1909, **Contributing**
One-story frame Bungalow, gable roof with bracketed cross gable over enclosed porch, one tapered rubble stone pier porch support. (original owner, J.B. Danforth). 2019 Update: Resource #84 in the 1986 nomination.
25. 1707 13th Ave. S. Reamer, D.A., House. c. 1904, **Contributing**
Arts & Crafts, two-story stucco and aluminum siding, clipped gambrel roof, one-story front gable porch with exposed roof timbers supported by tapered rubble stone piers. (original owner, D. A. Reamer). 2019 Update: Resource #85 in the 1986 nomination.
26. 1709 13th Ave. S. Thomas, E.J., House. 1904, **Contributing**
Two-story frame apartment complex, hipped roof with center cross hipped extension over projecting octagonal bay, flat roofed porch topped with wooden balustrade, porch supported by massive rubble stone piers. (original owner, E. J. Thomas). 2019 Update: Resource #86 in the 1986 nomination.
27. 1711 13th Ave. S. Munger, R. C., House. 1913, **Contributing**
Tudor, two story stucco and asbestos shingles, clipped gable roof with cross gable over projecting end bay one-story gable roofed enclosed side porch, one-story hip roofed screened porch on right side of house, center first floor. (original owner, R. C. Munger; architect, Chaffee). 2019 Update: Resource #87 in the 1986 nomination.
28. 1715 13th Ave. S. Ashford, T.C., House. 1909, **Contributing**
Tudor, two-story frame and stucco, steep pitched hipped roof with cross gable dormer and projecting extensions, combination shed, and gable roofed one-story porch with stone rubble pier supports, below grade garage and first story end addition. (original owner, T. T. Ashford). 2019 Update: Resource #88 in the 1986 nomination.
29. 1717 13th Ave. S. Johnston, Forney, House. 1908, **Contributing**
Two-story frame, steep pitched hipped roof with cross gable center dormer, second floor projecting octagonal end bay windows above hip roofed one-story porch supported by paneled square wood columns on wooden pedestals, oval window in entry door. (original owner, Forney Johnston; architect, W. J. Wheelock). 2019 Update: Resource #89 in the 1986 nomination.
30. 1719 13th Ave. S. Sterrelt, R. H., House. c. 1888, **Contributing**
Two-and-a-half-story frame with asbestos siding, steep kicked hip roof with kicked gable center dormer and projecting end bays, combination flat and end gable recessed; wrap-around porch with paneled square columns. (original owner, R. H. Sterrelt). 2019 Update: Resource #90 in the 1986 nomination.
31. 1721 13th Ave. S. West, Edward, House. 1907, **Contributing**
One-and-a-half story aluminum siding, gable roof with carter shed roofed dormer, shed roofed porch across entire facade supported by rubble stone piers. (original owner, Edward West). 2019 Update: Resource #91 in the 1986 nomination.

Five Points South Historic District (BI & AD)

Jefferson, AL

Name of Property

County and State

32. 1747-1753 13th Ave. S Cornell, G.P., Rowhouse. 1908, **Contributing**
Two story brick rowhouse, flat roof with parapet and metal ventilator cornice, three hip roofed, one story porches supported on rubble stone piers, corbeled brick corner quoining and window side trim, ashlar window lintels and sills. (original owner, G. P. Cornell; architect, T. U. Walter). 2019 Update: Resource #92 in the 1986 nomination.
33. 1765 13th Ave. S. Collignon, G. W., House. 1907, **Contributing**
Two-story stucco, hipped roof with center louvered attic vent, hip roofed one story porch across facade supported on cut stone piers trefoil ornamental window next to main entry. (original owner, M. M. Newman; architect, G. W. Collignon). 2019 Update: Resource #93 in the 1986 nomination.
34. 1769 13th Ave. S. Ard, C. E. House. c. 1915, **Contributing**
Two-story frame and brick, steep pitched roof, one-story end gable porch supported on brick piers. (original owner, C. E. Ard). 2019 Update: Resource #94 in the 1986 nomination.
35. 1771 13th Ave. S. Aldrich, Jr, T. H., House. c. 1915, **Contributing**
Arts and Crafts, two-story brick, steep pitched hipped roof with multi shed roofed dormers, wide overhanging eaves form porch around three sides of house. (original owner, T. H. Aldrich, Jr.; architect, Wheelock, Joy and Wheelock). 2019 Update: Resource #95 in the 1986 nomination.
36. 1800 13th Ave. S. Ramsay High School. 1931, **Contributing**
Colonial Revival, three story Flemish bond brick, gable roof w/ two cross gable end projections, center wooden cupola on brick base, keystone jack arched windows, ashlar corner quoining and ashlar belt course between first and second floors, ashlar false balconies on end projections at second floor level, oversized arched fan lighted windows on each projecting bay. (Warren, Knight and Davis Architects). 2019 Update: Resource #82 in the 1986 nomination.
37. 1914 13th Ave. S. Medical Office Building. c. 1966, **Contributing**
Medical Office Building, 1914 13th Avenue South: c. 1966; Modern style; one-story; brick. 2019 Update: Resource #46 in the 1986 nomination; the resource was classified as noncontributing as the period of significance for the district then ended at 1936.
38. 2004 13th Ave. S. Office Building. c. 1950, **Contributing †**
Two-story brick veneer office building with a bell cast hipped composition shingle roof; Full-width one-story extension across the façade with an upper deck surrounded by a decorative iron railing; steel casement windows with fixed display windows at the extension. 2019 Update: This resource was outside the boundary of the 1986 and 1991 nominations.
39. 2023 13th Ave. S. rear Lodge Building. c. 1955, **Contributing †**
Rectangular one-story concrete block building with a hipped composition shingle roof with exposed rafter ends; altered with replacement windows and full-façade screened pavilion. 2019 Update: This resource was outside the boundary of the 1986 and 1991 nominations; retains its overall mid-1950s character as documented in the files of the Jefferson County Board of Equalization.

14th Ave. S

40. 1900 14th Ave. S. Robinson House. 1892, **Contributing**
Beaux Arts- influenced style; two stories; probably clapboard refaced with asbestos siding. A good example of a turn-of-the-century house in stylistic transition, combining Beaux Arts influence (broad proportions, clustered columns, and bold classical details) with earlier Victorian forms (two-story tower bay and high, active roofline). From 1951 until some time in the 1980s, the house was the medical office of Dor. Walter McCoy. It was certified as the Robinson-McCoy House by the National Park Service prior to its rehabilitation as Oasis, a woman's health facility. 2019 Update: Resource #52 in the 1986 nomination.

Five Points South Historic District (BI & AD)

Jefferson, AL

Name of Property

County and State

41. 1901 14th Ave. S. Medical Office Building. c. 1980, **Noncontributing**
Modern style; one-story; brick and stone. 2019 Update: Resource #57 in the 1986 nomination.
42. 1905 14th Ave. S. Rogers-Taylor House. c. 1900, **Contributing**
Georgian Revival style; two stories; brick. The only example of Georgian Revival style architecture in the district and one of the best--and earliest--examples in the neighborhood. Its distinctive features include the monumental portico and the fine brickwork and quoining. 2019 Update: Resource #58 in the 1986 nomination.
43. 1908 14th Ave. S. Simpson House. c. 1896, **Contributing**
Victorian Cottage style; one-and-one-half stories; clapboard and half-timber. Perhaps the best example in Five Points of a large Victorian Cottage. Early (based on existing evidence) local use of half-timber in gable. 2019 Update: Resource #53 in the 1986 nomination.
44. 1912 14th Ave. S. Andrews House. c. 1900, **Contributing**
Victorian Colonial Revival style; two stories; clapboard refaced with brick-look asbestos siding. A good example of turn-of-the-century transitional architecture exhibiting both Victorian and Classical influences. 2019 Update: Resource #54 in the 1986 nomination.
45. 1916 14th Ave. S. House. 2016, **Noncontributing ■**
Site of the former Andrews-Ungerman House (c. 1900); modern one-and-one-half story frame dwelling with a gable on hipped composition shingle roof with side shed dormers. 2019 Update: Resource #55 in the 1986; Demolished, replaced with a modern house.
46. 1923 14th Ave. S. rear Lathrop House Ancillary Dwelling. c. 1901, **Contributing †**
2019 Update: Ancillary dwelling to the former Lathrop House (resource #59 in the 1986 nomination) at 1923 14th Ave. S which was destroyed by fire in recent years, but this ancillary dwelling was not recorded. One story frame Folk Victorian style dwelling with a cross gable on hipped composition shingle roof; 3-bay façade with a front-facing gable wing at its eastern bay with a replacement window flanked to the west by a central entrance with transom and a Queen Anne block glass window; shed addition to the east; less than full façade hipped porch with turned posts; wood weatherboard siding.
47. 2112 14th Ave. S. The Round Building. 1970, **Contributing**
One-story round office building on a raised brick foundation with a flat roof; aluminum curtain walls at main floor behind vertical aluminum slats. 2019 Update: This resource was outside the boundary of the 1986 and 1991 nominations.

15th Ave. S

48. 1904 15th Ave. S. Saipan Apartments, Building A, c. 1950, **Contributing**
49. 1904 15th Ave. S. Saipan Apartments, Building B. c. 1950, **Contributing**
Saipan Apartments, 9 units, two separate buildings in irregular hollow rectangle. One story asbestos shingled eave entrance row apartments. Small ventilator dormers in roof line, half-moon ventilators at end of buildings. Each apartment typically with door, small high sash window and larger sash window. Resembles World War II temporary housing style. Buildings non-contributing because of style and age, but older retaining wall of ironstone still largely intact, helps link this block with rest of neighborhood. Replaced original 1909 building on site. 2019 Update: Resource #96 in the 1991 nomination; address was mislabeled as 1903-1905; now contributing due to the expanded period of significance for the district.
50. 1911 15th Ave. S. Hatcher, W. K., House. 1915, **Contributing**
Two story eave entrance frame house with brick foundations; two huge square brick pillars support one story porch, shed roof covers center & right of house. Door of nine panes, matching flanking windows of six panes. Paired sash windows on left, outside porch. Two sets of paired windows in second floor facade; left hand set under small gable with ventilator. Projection three feet deep on left facade runs full two stories up. Brick chimney on left side of house. Original owner W. K. Hatcher, 1915. 2019 Update: Resource #97 in the 1991 nomination.

Five Points South Historic District (BI & AD)

Jefferson, AL

Name of Property

County and State

51. 1915 15th Ave. S. Davidson, W. H., House. 1916, **Contributing**
Almost identical facade to 1911 next door. Roof hipped; clapboard first story, wood shingled second. Porch not screened, brick porch railing still capped with stone. Original owner W. H. Davidson, 1916. 2019 Update: Resource #98 in the 1991 nomination.
52. 1919 15th Ave. S. Martin, Hugh, House. 1922, **Contributing**
Eave entrance one story house, stucco facade may be new, clapboard on rest of house. Right hand half of facade protruding blank gable end with chimney half exposed; left hand side includes entrance near center of house and single shuttered sash window on left. Left hand side of house with small separate gable and small dormer toward rear. Original owner Hugh Martin, 1925 (historic marker on house says 1922). 2019 Update: Resource #99 in the 1991 nomination.
53. 1927 15th Ave. S. Madrid Apartments. 1927, **Contributing**
Madrid Apartments, ten units, handsome three story stone block and yellow brick apartment house. Central half of building facade emphasized by protruding approximately a foot toward street. Central doorway with tile or limestone molding. Small sash windows on either side, larger ones on recessed right and left of building; first floor stone block with light stucco over; top two stories and above mostly yellow brick. Stories two and three have paired sash windows in extended arches of plaster under yellow brick arch. Small windows on either side of central protrusion; larger ones on recessed sides just as on first floor. Visual break between first and second floors a foot wide horizontal row of block or plaster, slightly in relief. Visual break between second and third floor a row of brick ends with same relief. Central parapet remarkable for three dimensional brickwork and four limestone standards that clear upper parapet by two feet. Stone coping on rest of parapet. Flanking recessed left and right sides of facade with extremely wide molding. A gem of a 1920s art nouveau facade, all in all. Built 1928. 2019 Update: Resource #101 in the 1991 nomination.
54. 1931 15th Ave. S. Drake Apartments. 1929, **Contributing**
Ten units, three story block, stucco and varied brown brick that in many ways is sister building to 1927 next door, though not quite as striking visually. Central extension not quite as wide, though with same arches over second and third story windows. No visual break between second and third floors; no elaborate parapet, but with some interesting brickwork in arch and at top of parapet. As in 1927 15th Ave. S, irregular fenestration along sides. Built 1929. 2019 Update: Resource #102 in the 1991 nomination.
55. 2018 15th Ave. S. The Horizons School. 2005, **Noncontributing** ■
2019 Update: This resource was outside the boundary of the 1986 nomination. Modern L-shaped office building with a hipped composition shingle roof, stone veneer and synthetic board siding.

15th Ct. S (formerly Nelson Ave.)

56. 1901 15th Ct. S. Redd-Hayden House. 1907, **Contributing**
Large square two-story frame house with first story hip roof over porch that runs down both left and right sides of house. Small gable over central entrance. Wide concrete stairs with doubled brick pediments and single large urns at top. Doorway slightly left of true center, first story bay window at right, large single window at left. Upstairs fenestration with paired windows at right, small single window centrally, paired windows and separate single window on left. Gable end shingled, with small window and ventilator. Original owner Ernest Redd, 1910. 2019 Update: Resource #103 in the 1991 nomination.
57. 1905 15th Ct. S. McDonald, I. F., House. 1910, **Contributing**
Eave entrance, two story squarish frame house. Brick foundation porch with brick pediments sheltered by shed roof the width of the facade; this porch roof supported by four large square wooden posts linked by square timber railing. Small gable over left side entrance, larger central gable above. Door on left flanked by windows, over all is long rectangular window mounted in elaborate molding. Single window to right, paired windows in second floor. Symmetrical fenestration on sides, four windows to a floor. Original owner I. F. McDonald, 1910. 2019 Update: Resource #104 in the 1991 nomination.

Five Points South Historic District (BI & AD)

Jefferson, AL

Name of Property

County and State

58. 1906 15th Ct. S. Heyman, Henry, House. 1910, **Contributing**

Two story frame, pyramid roof with small gable on right hand side. Second story bay window behind wrought iron balcony. First story porch deeply recessed. All these elements on right of facade. Left of former porch enclosed with paneling; makes it something of a judgement call on contributing or non-contributing. Wide brick porch steps. Triple large round wooden columns at porch entrance. Mirror image of 1928 16th Ave. S., next door. Original owner Henry Heyman, 1910. 2019 Update: Resource #105 in the 1991 nomination.

16th Avenue S

59. 1843 16th Ave. S. Letchworth Apartments, Building A. 1929, **Contributing**

60. 1843 16th Ave. S. Letchworth Apartments, Building B. 1929, **Contributing**

61. 1843 16th Ave. S. Letchworth Apartments, Building C. 1929, **Contributing**

62. 1843 16th Ave. S. Letchworth Apartments, Building D. 1929, **Contributing**

63. 1843 16th Ave. S. Letchworth Apartments, Building E. 1929, **Contributing**

64. 1843 16th Ave. S. Letchworth Apartments, Building F. 1929, **Contributing**

65. 1843 16th Ave. S. Letchworth Apartments, Building G. 1929, **Contributing**

66. 1843 16th Ave. S. Letchworth Apartments, Building H. 1929, **Contributing**

Letchworth Apartments - twelve units. See also 1842 21st St. S. The jewel of the whole proposed addition is apartment complex in the southeast corner of the area. Cascading down a steep hillside from 21st Street to 16th Ave. S. are six separate buildings (Buildings A-F), in pairs of two. Most are two story stucco over brick, with T-shaped ridge lines and the tips of all the gables hipped and a suggestion of half-timbering under each gable. The main doorways are central to the long sides under small steep gables of their own, and a tiny balcony above it on the second floor. Sash windows with brick sills and wooden framing run in sets of three, two or singles. Each building seems constructed by two large and three small apartments and includes at least one small second story balcony. Stone and brick plazas or landings up and down the hillside are connected by sets of curving stone stairs; in need of repair, and in fact currently being extensively refurbished, it is still a visual delight. The 16th Ave. facade has twin three-car underground garages (Buildings G-H); basically, of block and concrete, they are faced with arches of stonework. Central stairs to the complex are between huge pediments of diverse stone. The 21st St. facade has a smaller inset parking lot, a rock wall with cement cap; the second story of the upper units is visible. Built 1929. 2019 Update: Resource #125 in the 1991 nomination; note that the assessor's records only assign the street address #1843; lettering is for descriptive purposes for this nomination.

67. 1852 16th Ave. S. Lightner, D. B., House. 1923. **Contributing**

Gable entrance one story frame house. Secondary gable projecting from right hand three-fourths of facade sheltering porch, supported by half-height yellow brick piers with short square wooden columns atop them. Central doorway on porch of twelve glass panes, pairs of sash windows on either side. Lots on 1852, 1854 and 1856 drop off so steeply behind that these might be counted story and a half houses. Original owner D. B. Lightner, 1923. 2019 Update: Resource #126 in the 1991 nomination.

68. 1854 16th Ave. S. Wells, C. K., House. 1924, **Contributing**

Gable entrance one story frame house, secondary gable projects over porch on right hand three-fourths of house. Supported by square brick columns. Doorway on left of porch, paired sash windows on right. Matching vertical wooden screens in tips of both gables. Exposed rafter ends as on 1856 and 1852 on either side. Wide brick chimney of left side of house. Original owner C. K. Wells, 1924. 2019 Update: Resource #127 in the 1991 nomination.

Five Points South Historic District (BI & AD)

Jefferson, AL

Name of Property

County and State

69. 1856 16th Ave. S. Todd, Susan, House. 1916, **Contributing**
Single story asbestos shingled eave entrance house. Main gable end with wooden shingles. Low gable projecting over porch on right hand two-thirds of house, gable with exposed rafters and supports. This porch gable is supported by irregular stonework pillars, with shorter decorative piers flanking the entrance. Window on left front of facade. Original owner Susan Todd, 1916. 2019 Update: Resource #128 in the 1991 nomination.
70. 1900 16th Ave. S. Manson, T. J., House. 1911, **Contributing**
Single story asbestos shingled eave entrance house. Main gable end with wooden shingles. Low gable Large squarish pyramid roofed asbestos shingled two story house obviously built around same time as 1904, 1908, 1912. Symmetrical façade-wide hipped roof over second story porch, eight sash windows facing street. Lower porch open, supported by four large square brick and plaster columns -porch entrance centrally under small decorative gable. Four element doorway on right, two tall sash windows on left. Original owner T. J. Manson, 1911. 2019 Update: Resource #129 in the 1991 nomination.
71. 1904 16th Ave. S. House. c. 1925, **Contributing**
Two story frame squarish pyramid roofed house. Gable extension over right hand half of facade, creates upper porch (now enclosed with aluminum frame windows) and slightly larger lower porch sheltering central doorway with four element door, side panes and skylight common in Five Points. Single pane windows on left facade of both floors, lower under slight porch roof extension. Original owner not listed in city directory. 2019 Update: Resource #130 in the 1991 nomination.
72. 1908 16th Ave. S. Liles, L. P., House. 1911, **Contributing**
Two story squarish frame, pyramid roof house. Shed roof one story porch almost width of facade, supported by three short limestone piers topped with tapered, turned wooden columns. Four piece doorway with intricate pattern of smaller panes in side windows. Second story gable extension on right hand two-thirds of facade, row of five pane windows with single lower pane, four vertical upper panes that is common motif of neighborhood. Second floor shed roof above that, vent in triangular gable above. Wide brick chimney on left side of house. Original owner L. P. Liles, 1911. 2019 Update: Resource #131 in the 1991 nomination.
73. 1912 16th Ave. S. Lowrey, L. M., House. 1911, **Contributing**
Two story limestone and stucco pyramid roof house. One story porch across entire facade and extending down some of the right hand side; has Mediterranean style flattened arches and main part of each pillar is limestone with deep horizontal bands cut as decoration. Main doorway on left, of four elements; three piece bay window on right. Three windows and door in second floor facade, small railed deck inset into roof almost width of house, or some three-fourths width of porch. Small gable on top right of roof. Most striking house on 16th Ave. S. for blocks. Original owner J. M. Lowrey, 1911. 2019 Update: Resource #132 in the 1991 nomination.
74. 1916 16th Ave. S. Shadowood Apartments. 1977, **Noncontributing**
Shadowood Apartments - eight units; relatively new apartments with the end of the row facing the street. Clerestory effect on left side where entrances are, cheap wood sheeting with battens covering joints on end facing street. Mercifully kept low and fairly well recessed, but destructive to visual character of neighborhood. Boothby Realty; built 1977. 2019 Update: Resource #133 in the 1991 nomination.
75. 1922 16th Ave. S. Jeffries, W. H., House. 1907, **Contributing**
Two story frame house on carved limestone foundation. One story porch roof supported by three massive stone piers and masonry pillars, entrance to porch on left facing main doorway. Gable projection above that on left set all across with six French windows. Right half of second story facade an open, railed deck; a single sash window in the main part of the house. Original owner W. H. Jeffries, 1907. 2019 Update: Resource #134 in the 1991 nomination.
76. 1923 16th Ave. S. Lum, G. E., House. 1907, **Contributing**
Two story yellow and brown brick pyramid roofed home, with extremely wide, closed eaves. Wide brick chimney penetrates roof and rises approximately ten feet to height of roof top. Original wide concrete stairway up to building. Projecting deck on 16th Ave. facade supported by two interior brick columns approximately three feet square - outer piers only decorative, in a reversal of common neighborhood pattern. Limestone caps to brick wall, central entrance.

Five Points South Historic District (BI & AD)

Jefferson, AL

Name of Property

County and State

Upper story facade all around is vertical paneling above the first story brickwork. Original owner G. E. Lum, 1907. 2019 Update: Resource #135 in the 1991 nomination.

77. 1924-1926 16th Ave. S. Richelieu Courts Apartments. 1917, **Contributing**

Maples Plaza apartments (originally Richelieu Courts Apartments). A U-shaped three story brick apartment house with the ends of the "U" facing 16th Ave. S. Wings with newer wooden balconies; central doors and sash windows on either side original. Main building doorways on inside of "U" to left and right. Central facade deeply recessed, two pairs of sash windows in each floor. Decorative crenellation with limestone coping all around Small decorative Mediterranean style roofs on interior front of facade and both top corners. Original owner W. P. Redd, 1917. 2019 Update: Resource #136 in the 1991 nomination.

78. 1928 16th Ave. S. Simpson, R. L., House. 1911, **Contributing**

Mirror image of 1906 15th Ct. S. next door but with fewer modifications. Bay window upstairs single paned. Porch downstairs still open. Elaborate doorway with flanking glass panes and three separate panes above. Pediments with urns flanking porch steps; original wooden railing around porch. Single wrought iron railing obviously added beside stairs. Tall brick chimney penetrates roof at right front. Original owner R. L. Simpson, 1911. 2019 Update: Resource #137 in the 1991 nomination.

18th St. S

79. 1000 18th St. S. Stratford-Avon Apartments. 1925, **Contributing †**

Three-story brick apartment building with a low shed roof concealed by shaped parapets; faces east, 5x6 bay core; central; entrance at the facade with a hipped hood, single, double and triple 1/1 windows; one of two nearly identical apartment adjacent apartment buildings. 2019 Update: This resource was outside the boundary of the 1986 nomination.

80. 1010 18th St. S. Warwick Apartments. 1925, **Contributing †**

Three-story brick apartment building with a low shed roof concealed by shaped parapets; faces east, 5x6 bay core; central; entrance at the facade with a hipped hood, single, double and triple 1/1 windows; one of two nearly identical apartment adjacent apartment buildings. 2019 Update: This resource was outside the boundary of the 1986 nomination.

81. 1324 18th St. S. House. 1920, **Contributing †**

One-story brick dwelling with a front-facing gable composition shingle roof; faces east 2x4 bay core; former garage entrance at the north bay of the facade flanked by a casement window, similar windows at the upper level, replacement windows at the side elevations. 2019 Update: This resource was outside the boundary of the 1986 nomination.

19th St. S

82. 1006 19th St. S. Robertson House. c. 1900, **Contributing**

Queen Anne style with strong classical influence; two stories; shingle and clapboard. One of the city's few remaining examples of Queen Anne style architecture. Built by William Van Murray Robertson, founder and president of the Alabama Home Building and Loan Association. 2019 Update: Resource #21 in the 1986 nomination.

83. 1016 19th St. S. Southside Baptist Church. c. 1911, **Contributing**

1911 (Sanctuary); 1920s (Education building); 1961 (3-story addition), architect: William Leslie Welton (sanctuary), Lawrence S. Whitten (1961 addition); Roman Revival style; two stories; brick, Georgia marble, and terracotta. One of the best examples of Roman Revival architecture in the city, based on a free interpretation of the Roman Ionic temple somewhat resembling Jefferson's Virginia State Capitol in Richmond. This was the fifth structure built to house the Southside Baptist congregation. 2019 Update: Resource #22 in the 1986 nomination.

Five Points South Historic District (BI & AD)

Jefferson, AL

Name of Property

County and State

84. 1021 19th St. S. Office Building. 1934, **Contributing †**
One-story rectangular brick commercial building with a low-pitched shed roof; faces west, 3x6 bay core; central entrance sign flanked to either side by single 15/20 light windows; corbeled cornice at the façade. 2019 Update: This resource was outside the boundaries of the 1986 and 1991 nominations.
85. 1110 19th St. S. Whitfield Flats. 1905, **Contributing**
Beaux Arts style; three stories; brick with limestone window caps; pressed metal cornice. This is the oldest apartment building in the Five Points neighborhood and one of the oldest in the city. 2019 Update: Resource #23 in the 1986 nomination.
86. 1112 19th St. S. Office Building. 1963, **Contributing**
Modern style; one-story; brick; hipped composition shingle roof, recessed corner entrance; replacement window. Built by Dr. William Buck in 1963 as a medical office. 2019 Update: Noncontributing resource #24 in the 1986 nomination. The building retains the overall integrity of its 1963 design and has been reclassified as contributing.
87. 1126 19th St. S. Maraware Apartments. c. 1925, **Contributing**
Craftsman style, two stories; brick with limestone capped balcony ledge. 2019 Update: Resource #25 in the 1986 nomination.
88. 1201 19th St. S. Southern Bell Building. 1970, **Contributing †**
Two story reinforced concrete building with a flat roof; horizontal concrete plates below the first two floors and roof; concrete curtain walls with decorative grilles centered and each bay. 2019 Update: This resource was located within the boundaries of the 1986 and 1991 nominations but was not recorded.
89. 1301 19th St. S. Highland Apartments. c. 1927, **Contributing**
Craftsman style and classical influences; three stories; brick; tile roof; limestone sills. Brickwork laid in pattern with contrasting colors to achieve decorative effect. 2019 Update: Resource #47 in the 1986 nomination.
90. 1309 19th St. S. Tarrant-Bingham House. c. 1900, **Contributing**
Victorian Colonial Revival style; two stories; clapboard. 2019 Update: Resource #48 in the 1986 nomination.
91. 1321 19th St. S. McCants House. 1888, **Contributing**
Second Empire-influenced style; two stories; clapboard. This is one of the nine surviving houses from the Town of Highland era (1887-93). It is a rare Birmingham example of lingering Second Empire and Italian style influences. 2019 Update: Resource #50 in the 1986 nomination.
92. 1325 19th St. S. Robinson Apartments. 1914, **Contributing**
Craftsman style; two stories; brick with wood trim. A good example of the Craftsman style used in apartment design. 2019 Update: Resource #51 in the 1986 nomination.
93. 1400 19th St. S. Estes House. c. 1897, **Contributing**
Victorian Colonial Revival style; one- and-a-half-stories; clapboard. Good example of a c. 1900 house form (with recently reconstructed porch) that combines elements of Queen Anne (corner turret and dormers) and the Colonial Revival (Palladian window, classical window molding, and symmetrical proportions). Contributing. 2019 Update: Resource #56 in the 1986 nomination.
94. 1510 19th St. S. 1500 Building. 1996, **Noncontributing ■**
Modern two-story stucco over brick commercial building with a hipped composition shingle roof with cross gables. 2019 Update: Modern building on the site of three resources that were listed as contributing to the 1991 nomination – resources #106-108.
95. 1518 19th St. S. Perkins, W. D., House II. 1903, **Contributing**
Large two story frame house on angled lot where 19th St. does a half right around it. Complicated ground plan - house roughly square under pyramid roof, but other roof and side extensions on every side of house! Facade with one story shed roof on left, gable extension on right sheltering prominent main door. Porch supported by large round

Five Points South Historic District (BI & AD)

Jefferson, AL

Name of Property

County and State

wooden columns with square bases and Corinthian capitals, on top of low red brick piers. Pediments also red brick capped with stone and urns. Second story facade - left half extended toward street, two windows there sheltered by gable in which are three decorative tiny windows, the center one arched. On right of second floor facade is set of three sash windows, the central one larger, echoing the main doorway below. Right side of house with small one story bay window and, further back, full two story five foot extension and brick chimney. Left side of house with large two-story rectangular extension, but most remarkable, a one story corner addition that makes a perfectly circular room with three-fourths of a wide, cone shaped roof. On the back of the house is the largest rectangular extension of all the sides. Original owner W. D. Perkins, 1903. 2019 Update: Resource #109 in the 1991 nomination.

96. 1522 19th St. S. Simpson, J. B., House. 1912, **Contributing**

Two story frame, eave entrance house. Façade somewhat modified for apartment purposes. Exterior staircase now exits down middle of formerly open porch, turns right to ground. Shed roof on small square posts seems new addition of same vintage. Basic body of house intact, but facade extensively redone. Original owner J.B. Simpson, 1912. 2019 Update: Resource #110 in the 1991 nomination; while the façade alterations detract from the integrity of the resource, its 2nd floor and side elevations remain relatively intact and the resource has been reclassified in this nomination as contributing.

97. 1524 19th St. S. Watson, E. C., House. 1914, **Contributing**

Large square two story frame, gable entrance house; original facade symmetrical with two sets of paired windows in second story, twin doors and paired windows on either side in first story. Now porch added, with concrete block piers supporting roof which is also deck for second floor. Matching new wooden staircases come off at right and left and turn toward street. Enough of original shape will visible to make it contribute, but something of a value call here. Original owner E. C. Watson, 1914. 2019 Update: Resource #111 in the 1991 nomination; while the façade alterations detract from the integrity of the resource, the resource has been reclassified in this nomination as contributing.

98. 1525 19th St. S. Kendrick House, F. L., House. 1912, **Contributing**

Large squarish two story house with complicated asymmetrical facade. Right half of facade under shingled gable projects some four feet toward street. Left half recessed, with shed roof creating porch supported by two sets of three columns at corners. Elaborate doorway to left of porch. Single window above porch. Stonework retaining wall apparently original. Original owner F. L. Kendrick, 1912. 2019 Update: Resource #112 in the 1991 nomination.

99. 1526 19th St. S. Tardy, C. M., House. 1913, **Contributing**

Two story frame house with hipped roof. Full two story porch three- fourths width of facade, gabled, with two massive square wooden columns on huge rock piers, each pier three feet high. One story landing for second floor, wider than the two story porch and extending almost the width of the facade, supported by smaller square wooden pillars. The railing of this seems to be a later addition. Wide eaves. Central double doors, French style. Matching shuttered sash windows on either side, and same arrangement in second floor facade. Two windows in middle of second floor facade to left of center. Original owner C. M. Tardy, 1913. 2019 Update: Resource #113 in the 1991 nomination.

100. 1527 19th St. S. Hammett, W. D., House. 1910, **Contributing**

Two story squarish frame house. One story hipped roof creates porch the width of the facade, supported by three brick piers with square wooden column atop them. The stairs up to the porch are in front of the doorway at left, the railing is on the right and sides. Second story gable projects over left hand side of facade, creates second floor balcony; its roof supported by two square wooden columns; the whole has wooden railings, making for a striking street front facade. A single large sash window is in the lower right facade, with two smaller sash windows in the second floor. Extremely wide eaves on both porches and main roof. Original owner W. D. Hammett, 1910. 2019 Update: Resource #114 in the 1991 nomination.

101. 1528 19th St. S. Ratliff-Crim House. 1912, **Contributing**

One story frame gable entrance house, with hipped roof porch resembling bungalow entrance. Columns of irregular stone and red mortar at corners of porch; pediments and interior piers of same; central walkway and stairs, central entrance. Symmetrical facade: doorway and flanking vertical pane windows centrally, with double sash windows with shutters on either side - the upper sash echoes the vertical panes of the central doorway. Ventilator and small

Five Points South Historic District (BI & AD)

Jefferson, AL

Name of Property

County and State

blind window in gable. Gable extensions left and right sides of house. Original owner P. F. Rothpletz, 1910. 2019 Update: Resource #115 in the 1991 nomination.

102. 1529 19th St. S. Morrow, T. A., House. 1910, **Contributing**
Two story frame house, hipped roof much like 1527 next door. Identical porch roof but with turned wooden pillar all around, squared wooden railing. Brick foundation of porch extends entire width of facade. Same four-piece doorway as 1531 15th St. S, also on left hand side. Original owner T. A. Morrow, 1910. 2019 Update: Resource #116 in the 1991 nomination.
103. 1530 19th St. S. Rothpletz, P. F., House II. 1910, **Contributing**
Two story hipped roof house, open gabled porch over first story supported by three wooden columns; entrance to porch between left two, wooden railing connecting others. Double doorway on left of facade, single window on right. Handsome shaped limestone foundation. Original owner R. F. Rothpletz, 1913. 2019 Update: Resource #117 in the 1991 nomination.
104. 1531 19th St. S. Middaugh, W. C., House. 1910, **Contributing**
Two story hipped roof house, open gabled porch over first story supported by three wooden columns; entrance to porch between left two, wooden railing connecting others. Double doorway on left of facade, single window on right. Handsome shaped limestone foundation. Original owner R. F. Rothpletz, 1913. 2019 Update: Resource #118 in the 1991 nomination.
105. 1532 19th St. S. Anglin, T. L., House. 1913, **Contributing**
One story frame gable entrance house. Shed roof some three-fourths the width of the facade, supported by irregular stone square pillars, red mortar. Steps to porch near right, pier on left and half a pier attached to right hand column. Doorway also on right, flanked by glass panes with rectangular window of ten panes as skylight. Double sash windows on left of facade, lower panes entire, upper in four vertical panes as is not uncommon in Five Points neighborhood. Original owner T. L. Anglin, 1913. 2019 Update: Resource #119 in the 1991 nomination.
106. 1534 19th St. S. Turpin, W. T., House. 1917, **Contributing**
Gable entrance wood shingled house. Smaller projecting gable on left half of facade shelters porch (now enclosed with modern door and windows). On right of facade is pair of sash windows. Interesting matching grid of ventilators in tops of both gables. Concrete steps to porch; brick foundation. Original owner W. P. Turpin, 1917. 2019 Update: Resource #120 in the 1991 nomination.
107. 1535 19th St. S. Collamore, G. T., House. 1922, **Contributing**
One story eave entrance frame house with shallow gable projection centrally creating porch. Massive brick porch foundation with four, four pane basement windows, possibly added later. French door on left of porch. Single sash windows left and right of porch. Original owner G. T. Collamore, 1922. 2019 Update: Resource #121 in the 1991 nomination.
108. 1536 19th St. S. Lipscomb, S. V., House. 1924, **Contributing**
One story frame house, main body toward rear with ridgeline paralleling the street, but one low gable extending toward front creates front room, and second gable projecting from it creates porch. Central door with four vertical panes in top flanked by fixed pane windows on either side. Side fenestration irregular, but with same vertical panes in upper sash windows common in neighborhood. Original owner S. V. Lipscomb, 1924. 2019 Update: Resource #122 in the 1991 nomination.
109. 1537 19th St. S. Bethea, Malcolm, House. 1922, **Contributing**
One story frame house, hipped roof, gable porch entrance and same massive porch foundation as 1543 next door. Porch extension takes up central half of facade; double doors there, small high sash window. Paired sash windows on either side of porch. Original owner Malcolm Bethea, 1922. 2019 Update: Resource #123 in the 1991 nomination.

Five Points South Historic District (BI & AD)

Jefferson, AL

Name of Property

County and State

110. 1543 19th St. S. Culpepper, E. P., House. 1923, **Contributing**
One story frame gable entrance house, though lot falls away so steeply toward street that left hand foundation includes built in garage. Massive brick foundation, roof extends over porch. Staircase comes up from right, turns to make central entrance. Wrought iron railings on stairs and porch. Doorway of twelve glass panes, left of center. Pairs of sash windows both left and right. Original owner E. P. Culpepper, 1923. 2019 Update: Resource #124 in the 1991 nomination.

20th St. S

111. 941 20th St. S. Exchange Bank, 1947, **Contributing †**
One-story Art Moderne style bank building with a flat roof; raised central rectangular block with flanking flat-roofed wings; clad with concrete to resemble cut stone, decorative frieze panel at the core; recessed central entrance; corner aluminum windows. 2019 Update: This resource was outside the boundary of the 1986 nomination.
112. 1000-1004 20th St. S. Five Points Hardware, 1923, **Contributing**
Commercial storefront style; one story; brick. Brick laid in decorative pattern. 2019 Update: Resource #1 in the 1986 nomination.
113. 1001 20th St. S. Apartment Building, 2019, **Noncontributing**
2019 Update: Resource #9 in the 1986 nomination; recently demolished to be replaced by an apartment building.
114. 1006 20th St. S. F. W. Woolworth Co., c. 1928, **Noncontributing**
1961 expanded and refaced; Commercial storefront style; one-story; brick. 2019 Update: Resource #2 in the 1986 nomination; recently extensively remodeled with raised corner bay add at the façade, a rooftop addition, and replacement storefronts
115. 1015 20th St. S. Commercial building. c. 1932, **Noncontributing**
Refaced c. 1980; Commercial storefront style; one-story; masonry sided with wood panels and shingles. Noncontributing. 2019 Update: Resource #11 in the 1986 nomination.
116. 1016 20th St. S. Homewood Inn and Suites/Piggly Wiggly Bldg. Façade, c. 1932. **Noncontributing**
Refaced c. 1980; Commercial storefront style; one-story; masonry sided with wood panels and shingles. Noncontributing. 2019 Update: Resource #3 in the 1986 nomination. Modern 7-story hotel building that retains the 1st floor Art Deco style facade of the former Piggly Wiggly Food Store. According to the 1986 nomination, it is "a very good local example of Art Deco detail incised at cornice line." The remnant of the facade is an important historic feature within the district, but the hotel building is noncontributing. Resource #3 in the 1986 nomination.
117. 1020 20th St. S. Commercial building, c. 1927, **Contributing**
Commercial storefront style; one-story; brick refaced with porcelain- enameled panels and tile. Also: 1024 20th Street South: c. 1910; Commercial storefront style; one story; brick refaced with corrugated aluminum panels and Carrara glass. 2019 Update: Resource #4 in the 1986 nomination. Facing has been removed to expose earlier stucco facade.
118. 1017-1027 20th St. S. Medical Arts Building, 1931, **Contributing**
Architect: Charles H. McCauley; Art Deco style; eight stories; brick with terracotta, limestone and aluminum. This is the only Art Deco skyscraper in the neighborhood. Note the typical Art Deco use of the chevron pattern in the terracotta trim and aluminum spandrels beneath windows. This was the first medical arts tower in the city, designed specifically for surgeons' and physicians' offices. 2019 Update: Resource #12 in the 1986 nomination. The building was converted for use as a hotel in 1988.
119. 1024 20th St. S. Commercial building. 1930. **Contributing**
Refaced c. 1910-1925; Commercial storefront style; one story; brick re-facing of original frame structure. This is possibly the oldest commercial building in the district, refaced in the 1910s or 1920s. 2019 Update: Resource #6 in the 1986 nomination. The building was stuccoed after 1986. That stucco was removed to expose the historic brickwork in 2018. The brickwork appears to date from c. 1930.

Five Points South Historic District (BI & AD)

Jefferson, AL

Name of Property

County and State

120. 1028-1030 20th St. S. Tomlin Grocery Building, c. 1910, **Contributing**
Commercial storefront style; one story; brick; limestone inlays and roofline capping. This building (which replaced an earlier frame structure) housed the two early neighborhood groceries: W. B. Tomlin (1900-1907) and Shropshire & Daniel (1908-1921). 2019 Update: Resource #7 in the 1986 nomination.
121. 1031-1035 20th St. S. Ware Building, 1930, **Contributing**
1031-1035 20th Street and 2004- 2008 Magnolia Avenue; architects: Miller & Martin; Art Deco style; one story; Brick faced with limestone. Good example of an Art Deco storefront with stylized sunburst motifs incised at roofline. 2019 Update: Resource #13 in the 1986 nomination.
122. 1032 20th St. S Highland Pharmacy Building, c. 1910, **Contributing**
Commercial storefront style; one story; brick with limestone inlays and capping along roofline. Geometric inlays and modified crenellation. 2019 Update: Resource #8 in the 1986 nomination.
123. 1034-1036 20th St. S. Studio Arts Building, 1994, **Noncontributing**
Modern two-story masonry commercial building with an arched tile and brick front. 2019 Update: Resource #16 in the 1986 nomination, the Studio Arts Building, was replaced in 1996.
124. 1045 20th St. S Highlands United Methodist Church, 1909. **Contributing**
Bell tower added 1921, P. Thornton Marye; Spanish Renaissance Revival style; two stories; brick and terracotta with red-tile roof. An outstanding example of Spanish Revival architecture in the city. Designed by the Atlanta architect who designed Birmingham's Terminal Station and Atlanta's Fox Theatre. 2019 Update: Resource #14 in the 1986 nomination. The United Methodist Church Education Building, 21st Street South and Magnolia Avenue, 1924, architect Ben Price was listed separately as Resource #15. The buildings are now joined by infill; Italian Renaissance Revival style; two stories; brick with red-tile roof.
125. 1100-1102 20th St. S. Munger Building, c. 1929, **Contributing**
Architects: Miller & Martin; Art Deco style; two stories on the Circle with a one-story, six-bay western wing; brick faced with limestone. The second Art Deco style building erected by the Munger family and the second in the neighborhood designed by Miller & Martin. The building's two-story height at the Circle, with a prominent arched opening in the central bay, and the way it expresses the curve of the intersection, reinforce the importance of the Circle and its quality as an urban space. Good examples of popular Art Deco motifs, including sunflowers, chevrons, and plant forms. 2019 Update: Resource #30 in the 1986 nomination; resource was listed with the address 1915-1933 11th Avenue South.
126. 1101-1105 20th St. S. Spanish Stores. 1926, **Contributing**
Also 2001-2011 11th Avenue South, 1926; 1930 addition (2011 11th Avenue South), Architects: Miller & Martin; Spanish Revival style; one story; stucco with stone insets and quoining and red-tile roof; two-story tower with brick inset. These were the first stores erected in Five Points by the R. S. Munger family, who spearheaded the Circle's commercial redevelopment in the 1920s. They were the first stores built with a 30-foot setback for parking. The best example of Spanish Revival commercial architecture in the city, they echo the style of the church across the street and with it contribute strongly to the Circle's sense of a European piazza. 2019 Update: Resource #34 in the 1986 nomination.
127. 1112 20th St. S Office Building, c. 1964, **Contributing**
Modern style; one-story; brick and steel 2019 Update: Resource #31 in the 1986 nomination; although the storefront systems have been replaced, the simple utilitarian character of this c.1968 commercial building remains. Reclassified from noncontributing to contributing.
128. 1116 20th St. S Office Building, c. 1964, **Contributing**
Modern style; one-story; brick and steel. 2019 Update: Resource #32 in the 1986 nomination; the simple utilitarian character of this c. 1968 commercial building remains. Reclassified from noncontributing to contributing.

Five Points South Historic District (BI & AD)

Jefferson, AL

Name of Property

County and State

129. 1124 20th St. S Terrace Court, 1907, **Contributing**
Architect: William C. Weston; Beaux Arts style; six stories; brick with terra cotta molding above entrance and first and fifth stories; classical cornice. Outstanding early example of a skyscraper apartment in the Southeast. Developed by Richard Massey, founder of Massey Business Colleges, and designed by early 20th-century Birmingham's foremost architect, William Weston. 2019 Update: Resource #40 in the 1986 nomination.
130. 1200 20th St. S Twelve Hundred Building, c. 1965, **Noncontributing**
Modern style; one-story; brick refaced with metal clad panels. 2019 Update: Resource #80 in the 1986 nomination. Extensively remodeled in recent years.
131. 1200 20th St. S Twelve Hundred Building, c. 1965, **Noncontributing**
Modern style; one-story; brick refaced with metal clad panels. 2019 Update: Resource #81 in the 1986 nomination. Extensively remodeled in recent years.
132. 1225 20th St. S Standard Oil Co. Service Station, c. 1950, **Contributing †**
2019 Update: This resource was outside the boundary of the 1986 nomination. One story masonry auto service station with a flat roof, rectangular with a cutaway corner; metal panels at the upper façade above stucco; despite alterations, the building retains sufficient integrity to convey its historic use and overall appearance.
133. 1300 20th St. S, Dian Apartments, 1914, **Contributing**
Architect: Harry Wheelock; Tudor Revival style; three stories; brick with limestone insets. Tudor arches, arrow slits, and trefoil motif in wooden window bays enrich the design. Sitting around a grassy courtyard with corner archway is also noteworthy. 2019 Update: Resource #63 in the 1986 nomination.
134. 1301 20th St. S, Newton Manor Apartments, 1928, **Contributing**
Architect: Jacob E. Salie; Classical influenced style; three stories; brick with limestone insets, sills and along roofline. 2019 Update: Resource #64 in the 1986 nomination.
135. 1312 20th St. S. Williams, E. Haskin, House, 1902, **Contributing**
Architect: Joseph C. Turner; Victorian Colonial Revival style; two stories; frame, clapboard siding. Home of prominent local industrialist, Haskins Williams who was a partner in the Birmingham Rail & Locomotive Company. The house is an exceptionally well-preserved example of Victorian Colonial Revival architecture. 2019 Update: Resource #61 in the 1986 nomination.
136. 1318 20th St. S. Levert Apartments, c. 1909, **Contributing**
Architects: Wheelock, Joy & Wheelock; Prairie and Craftsman-influenced style; two stories; brick. A distinctive early apartment house possibly designed by S. Scott Joy and built by the Levert family from New Orleans. The first-story cornice is a unique local example of Sullivanesque ornament. Wall tiles add a subtle and elegant expression of Prairie- Craftsman design motifs. 2019 Update: Resource #60 in the 1986 nomination.
137. 1401 20th St. S. American Liberty Insurance Co. Building, 1956, **Contributing †**
2019 Update This resource was outside the boundary of the 1986 nomination. Architect: Lawrence S. Whitten, Architect; two-story Mid-Century Modern style office building with brick veneer exterior walls and flat roofs; large rectangular core with banded windows, taller intermediate pierced concrete tower with a one-story wing to the northeast; landscaped lawns with cut stone retaining walls.

Cobb Ln.

138. 1309-1311 Cobb Ln. William, E. Haskins, Garage, 1919, **Noncontributing**
Utilitarian style; one story; fieldstone refaced (front facade only) 1970s. If recent brick facing were removed to reveal original fieldstone, would be an important early example of neighborhood garages, most of which were rented out. Conditionally Contributing. 2019 Update: Resource #89 in the 1986 nomination; this resource determined to be noncontributing by NPS in 2018.

Five Points South Historic District (BI & AD)

Jefferson, AL

Name of Property

County and State

139. 1310 Cobb Ln. Carriage House, c. 1900, **Contributing**

Utilitarian with hipped roof; one story, brick. This initially served as a barn and later as a garage for the Bingham house at 1309 19th Street South. 2019 Update: Resource #49 in the 1986 nomination.

Highland Ave. S

140. 2000 Highland Ave. S. Chick Fil A Restaurant. 2009. **Noncontributing**

Modern quick-serve restaurant. 2019 Update: Resource #79 in the 1986 nomination: Shop-A-Snak, N.E. corner 20th Street and Highland Avenue: c. 1980; Modern style; one-story; brick.

141. 2001 Highland Ave. S. Shepherd-Sloss Building. 1928. **Contributing**

Architect: Charles H. McCauley; Venetian Renaissance Revival style; one story; terracotta. Except for the Florentine Building downtown, this is the most outstanding example of ornate Italian Revival architecture in the city. Its basic cream color and use of red tile relate it to the Spanish stores, just a block away; this is reinforced by its siting, which gives it a visual presence on the Circle. One of the developers, A. Page Sloss, got the idea to build the stores after a trip to California where he had seen some of the first shopping centers that provided parking. 2019 Update: Resource #66 in the 1986 nomination.

142. 2015 Highland Ave. S. Southern Institute, c. 1957, **Contributing**

Modern style; two-stories; brick and composition panels. 2019 Update: Resource #67 in the 1986 nomination; reclassified from noncontributing to contributing.

143. 2019 Highland Ave. S. Southern Institute School of Interior Design, c. 1955, **Contributing**

Modern style; one-story; brick and composition panels. 2019 Update: Resource #68 in the 1986 nomination; reclassified from noncontributing to contributing.

144. 2028 Highland Ave. S. Hassinger, William H., House, 1898, **Contributing**

Architect: T. U. Walter, III; Victorian Colonial Revival style; two stories; brick and stucco, brownstone porch. One of the best examples in the neighborhood of the c. 1900 transitional house style. Its turrets, gables, verandah, and asymmetrical profile are Queen Anne-derived; the Ionic columns and flat wall surface are classically inspired. This was the home of a prominent industrialist, William H. Hassinger. 2019 Update: Resource #76 in the 1986 nomination.

145. 2030 Highland Ave. S. The Richmond, c. 1914, **Contributing**

Architect: D.O. Whildin. Beaux Arts style; three stories; brick. One of the best examples of Beaux Arts style apartments in the city. 2019 Update: Resource #75 in the 1986 nomination.

146. 2035 Highland Ave. S. South Highland Presbyterian Church. 1892. **Contributing**

1929 and 1953-4 (Education building); Architects: D. A. Helmick (Sanctuary), William Leslie Welton (1929 Education building), Van Keuren & Davis (1953-4 Education building); English Gothic Revival style; two stories; split-faced limestone. One of the two churches dating from the Town of Highland period and the oldest church on Highland Avenue. An important local example of English Gothic Revival architecture designed by one of 19th-century Birmingham's leading architects. 2019 Update: Resource #69 in the 1986 nomination.

147. 2040 Highland Ave. S. Sheraton Motor Inn, c. 1957, **Contributing**

Now Highland Manor Apartments, formerly The Colony Apartments; Modern style; 14 stories; masonry, steel and tile. 2019 Update: Resource #74 in the 1986 nomination; reclassified from noncontributing to contributing; despite alterations, the resource is a major visual landmark in the neighborhood, and it continues to reflect its overall historic character.

148. 2100 Highland Ave. S. Temple Emanu-El, 1914, **Contributing**

1956 (Morris Newfield Memorial Building); architects: William C. Weston, William N. Chambers (Newfield Building); Beaux Arts style; three stories; brick and granite; two stories; brick (Newfield Building). Built to serve the rapidly growing community of Reform Jews who had begun to migrate from the city's Northside in the early 1900s, the temple documents the migration of Jews to the Southside. Designed by early 20th-century Birmingham's foremost

Five Points South Historic District (BI & AD)

Jefferson, AL

Name of Property

County and State

architect, William C. Weston, it is one of the city's foremost examples of classical architecture, as well as being noteworthy for its structural design and its large bronze dome. 2019 Update: Resource #73 in the 1986 nomination.

149. 2101 Highland Ave. S. Southern Life and Health Insurance Company Building, 1973. **Contributing**
Architects: Davis, Speake and Associates; Modern style; seven-stories; faced with crushed stone panels. 2019 Update: Resource #70 in the 1986 nomination; reclassified from noncontributing to contributing as it is both a major example of late Mid-Century Modern architecture that expresses its concrete structural system and historically significant as an example of the development of Five Points South in response to the decline of the center city in the 1960s and 1970s.
150. 2121 Highland Ave. S. Southern Life and Health Insurance Company Building, 1927, **Contributing**
Architects: Warren, Knight, and Davis; Renaissance Revival style; four stories; limestone and brick. Southern Life & Health, Alabama's oldest life insurance company, was the first large non-retail firm to move out of the central business district and the first to locate on Highland Avenue. The notable Renaissance Revival design was the work of William T. Warren, who had worked in the New York office of McKim, Mead, and White before coming to Birmingham. 2019 Update: Resource #71 in the 1986 nomination.
151. 2124 Highland Ave. S. The Kenilworth Arms, 1927, **Contributing**
(Berkeley Apartments), Architect: William Leslie Welton; Classical-influenced style; six stories; brick, limestone. 2019 Update: Resource #72 in the 1986 nomination.
152. 2130 Highland Ave. S. Leo Building, 1958. **Noncontributing** ■
2019 Update: This resource was outside the boundaries of the 1986 and 1991 nominations. The building has been altered with the addition of modern windows to the south and east elevations. It does, however, retain a distinctive mosaic at the east side of its upper façade that depicts elements of Birmingham's industrial heritage. The building is noncontributing, but the mural is a notable historic feature.
153. 2144 Highland Ave. S. Office Building, 1960, **Contributing** †
2019 Update: This resource was outside the boundaries of the 1986 and 1991 nominations. The building is a simple one-story Mid-Century Modern office building with a flat roof and brick veneer exterior walls.

Magnolia Ave. S

154. 1021 Magnolia Ave. S. Pickwick Plaza, 1987, **Noncontributing**
2019 Update: This resource was constructed after the 1986 nomination and was not recorded in the 1991 nomination. The building is a two-story retail and office building with an attached parking garage.

Richard Arrington Jr. Blvd. (formerly 21st St. S)

155. 1010 Richard Arrington Jr. Blvd. Magnolia Office Park, 1966, **Contributing** †
Five-story modern office building that visually floats atop a raised parking deck; flat roof; concrete structural frame with large recessed wall surfaces with fixed windows. 2019 Update: This resource was outside the boundaries of the 1986 and 1991 nominations.
156. 1010 Richard Arrington Jr. Blvd. Office Building, 1965, **Contributing** †
2019 Update: This resource was outside the boundaries of the 1986 and 1991 nominations. Two-story enframed window wall type Mid-Century Modern office building with a flat roof; buff-colored brick and stucco frame, with recessed dark gray brick façade with fixed windows set within vertical bands.
157. 1101 Richard Arrington Jr. Blvd. Prudential Insurance Co. Bldg, 1961, **Contributing** †
2019 Update: This resource was outside the boundaries of the 1986 and 1991 nominations. One-story Mid-Century Modern office building with a flat roof; angled sidewalls conform to triangular site; cast canopy at the façade and front bays of side elevations supported by aluminum poles, recessed aluminum framed storefront systems; brick veneer at side elevations.

Five Points South Historic District (BI & AD)

Jefferson, AL

Name of Property

County and State

158. 1103 Richard Arrington Jr. Blvd. Sheraton Motor Inn Garage, 1961, **Contributing †**
2019 Update: This resource was outside the boundaries of the 1986 and 1991 nominations. Three-level concrete parking garage with 1st level retail space; plain painted block and concrete upper façade with aluminum framed storefronts at the 1st floor.
159. 1300 Richard Arrington Jr. Blvd. Highland View Apartments, 1922, **Contributing †**
2019 Update: This resource was outside the boundaries of the 1986 and 1991 nominations. U-shaped four-story apartment building with a flat roof; brick veneer exterior walls; shaped parapet at central entrance bay within L.
160. 1400 Richard Arrington Jr. Blvd. Office Building, 1950, **Contributing †**
2019 Update: This resource was outside the boundaries of the 1986 and 1991 nominations. One-story Mid-Century Modern office building with a flat roof; recessed entrance flanked by fixed windows, brick veneer exterior walls.
161. 1505 Richard Arrington Jr. Blvd. Phoenix Apartments & Pharmacy, 1905, **Contributing †**
2019 Update: This resource was outside the boundaries of the 1986 and 1991 nominations. Rambling three-story apartment/commercial building with a hipped industrial metal roof; Tudor Revival style elements; tapestry brick veneer with timbered stucco band below the roofline; 6/6 windows; one-story commercial block along the north elevation with a full width glazed balcony; four-story tower at the southwest corner of the core; rear hipped extension.

Ridge Park Ave. S

162. 2201 Ridge Park Ave. S. Barnett-Calhoun House. 1906, **Contributing †**
2019 Update: This resource was outside the boundaries of the 1986 and 1991 nominations. Two story frame Foursquare style dwelling with a hipped composition shingle roof with a decorative hipped dormer; full façade porch with brick pillars; central entrance with transom & sidelights, 1/1 windows.
163. 2103 Ridge Park Ave. S. House. c. 1925, **Contributing †**
2019 Update: This resource was outside the boundaries of the 1986 and 1991 nominations. One-story frame Craftsman style dwelling with a hipped composition shingle roof; less than full façade porch jerking head gable porch with stucco pillars, now glassed in; off-center entrance, mix of casement, 6/1, and aluminum jalousie windows; applied synthetic siding.

Resources recorded in the 1986 nomination that have been deleted from the inventory.

11th Ave. S

1900 Block 11th Ave. S. Parking Lot. No date.
Noncontributing; 2019 Update: Formerly resource #29.

2000 Block 11th Ave. S. Parking Lot. No date.
Noncontributing; 2019 Update: Formerly resource #35.

2025 11th Ave. S. Arnold House. c. 1903
Victorian Colonial Revival style; two stories; aluminum siding with brownstone porch. Contributing; 2019 Update: Formerly resource #36; gone.

12th Ave. S

1900 Block 12th Ave. S. Vacant Lot. No date.
Noncontributing; 2019 Update: Formerly resource #41.

Five Points South Historic District (BI & AD)

Jefferson, AL

Name of Property

County and State

13th Ave. S

1912 13th Ave. S. House, c. 1922

Craftsman style; one story; frame. Contributing; 2019 Update: Formerly resource #46; gone.

2023 13th Ave. S. Nabers, Francis, House, c. 1890

Five Points Alcoholics Anonymous Club; Victorian Colonial Revival; two stories; brick. One of the nine surviving houses from the Town of Highland era (1887-93). Home of a member of one of the earliest and most prominent families in Jefferson County. Dr. Francis Drayton Nabers, while practicing medicine on the side, established an important early Birmingham wholesale drug company, Nabers, Morrow and Sinnige. Contributing; 2019 Update: Formerly resource #65; gone.

14th Ave. S

1916 14th Ave. S. Andrews-Ungerma House, c. 1900

Victorian Colonial Revival style; two stories; clapboard. A good example of turn-of-the-century transitional architecture exhibiting both Victorian and Classical influences. Contributing; 2019 Update: Formerly resource #55; gone; current house constructed in 2016 is Resource #45.

1923 14th Ave. S. Lathrop House, 1901

Classical Revival style; two stories; clapboard and stucco. One of the neighborhood's--and the city's--notable houses, this is a rare local example of a turn-of-the-century classical revival style house that does not use a monumental portico as its central element; its classicism is expressed instead in its symmetry, Palladian windows, broken-pediment gable, Ionic columns, and classical entablatures. Reputedly, the first commission of early 20th-century Birmingham's foremost architect, William C. Weston, it was built for Frank H. Lathrop, prominent in the lumber business, and Sallie Comer Lathrop, daughter of Alabama governor Braxton B. Comer, who lived just around the corner. Contributing; 2019 Update: Formerly resource #59; gone.

15th Ct. S

1900-1904 15th Ct. S. Saipan Apartments.

2019 Update: Formerly resource #96; duplicate listing in the 1991 nomination but only one number was assigned to the resource.

19th St. S

1100 Block 19th St. S. Vacant Lot. No date.

Noncontributing; 2019 Update: Formerly resource #26.

1219 19th St. S. Crews House, c. 1903

Victorian vernacular style; two stories; brick (possibly a later re-facing of a frame structure). Contributing; 2019 Update: Formerly resource #43; gone.

1231 19th St. S. Boddie House, 1887

Victorian Colonial Revival style; two stories; clapboard. This was the home of John Boddie, one of Five Points' most important early landholders and developers. This is one of the nine houses in the neighborhood dating from the Town of Highland era (1887-93). Contributing; 2019 Update: Formerly resource #44; gone.

1522 19th St. S. Saipan Apartments

2019 Update: Formerly resource #96; triplicate listing in the 1991 nomination but only one number was assigned to the resource.

1500 19th St. S. Perkins, Dr. William D., House, 1897.

Long and narrow stuccoed two story house; hipped roof of red tile, fairly elaborate Spanish or Mexican style facade. One story porch supported by three massive masonry columns, making four flattened arches opening out of porch

Five Points South Historic District (BI & AD)

Jefferson, AL

Name of Property

County and State

over low wall. Smaller three sided roof over curious bay window projection in second floor; main place for window blank, only angled sides have windows. Arched parapet includes ventilators. Chimney of left side near front penetrates roof, rises eight feet above it. Remarkable piece of architecture. Original owner Dr. William D. Perkins, 1897. 2019 Update: This and the 2 adjacent resources have been torn down and replaced by a modern apartment building (Resource #106).

1510-1512 19th St. S. Nelson, A. W., House, 1902.

One story pyramid roofed house with one gable projection on center right side, one sheltering bay window on front right facade and a hipped roof porch extending on left two-thirds of front facade. Short, wide stone steps lead up to central door at right of porch. Irregular fenestration. Porch supported by five round wooden columns with simple capitals, connected by square wooden railings. Secondary porch projection to right near front of building seems to be a later addition after building was cut up into apartments. Original owner A. W. Nelson, 1902. 2019 Update: This and the 2 adjacent resources have been torn down and replaced by a modern apartment building (Resource #107).

1514-1516 19th St. S. Perkins, W. D., House, 1902.

Story and a half symmetrical pyramid roof frame house. One story flattened hip roof over porch supported by four large square wooden columns on short brick piers. Twin french doors at center flanked by pairs of very tall sash windows. Roofline complicated - twin gables on either side with blank fronts and vertical ventilator grids at apex of triangles; set back between them a large hip roofed dormer sheltering two sash windows. Pottery chimney top on left center of roof the only asymmetrical feature of the house. Original owner W. D. Perkins, 1902. 2019 Update: This and the 2 adjacent resources have been torn down and replaced by a modern apartment building (Resource #108).

20th St. S

1001 Block 20th St. S. Parking Lot, No date
Noncontributing. 2019 Update: Formerly resource #10.

1020 20th St. S, Commercial Building, c. 1910

Victorian vernacular style; two stories; brick (possibly a later re-facing of a frame structure). Conditionally Contributing. 2019 Update: Formerly resource #5; this resource is part of current resource #68.

1045 20th St. S, Highland United Methodist Church Education Building, 1924

This resource is now connected to Highland United Methodist Church by infill and the entire building is recorded as Resource #75.

1107 20th St. S. Bun 'n Bun Restaurant. 1956

(Mama's Kitchen); John M. Fuller; Modern style; one-story; brick with wood siding. Contributing. 2019 Update: Formerly resource #33; gone.

1300 Block 20th St. S. Parking Lot, No date

Noncontributing. 2019 Update: Formerly resource #65A.

21st St. S

1842 21st St. S. Letchworth Apartments

2019 Update: Formerly resource #125; duplicate listing in the 1991 nomination but only one number was assigned to the resource.

Highland Ave.

Highland Ave. House, No date

Demolished 1985. Contributing. 2019 Update: Formerly resource #77; gone.

2012 Highland Ave. Service Station, c. 1936

Demolished 1985. Contributing. 2019 Update: Formerly resource #78; gone.

Five Points South Historic District (BI & AD)
Name of Property

Jefferson, AL
County and State

2000 Highland Ave. Shop-A-Snak, c. 1980
2019 Update: Replaced with a modern quick-serve restaurant in 2009.

Integrity

The Five Points South Historic District retains integrity of location, design, setting, materials, workmanship, feeling, and association. The resources within the district typically remain in their original location. The basic designs of the resources within the district are largely unaltered from the district's period of significance and 100 of the 115 (87%) resources in the inventory are classified as contributing. Of the noncontributing resources, seven were constructed after the district's period of significance and eight have been altered to the degree where they no longer retained integrity. The district's setting is largely unchanged from 1973, although there have been scattered resources lost to demolition. Resources within the district typically retain their historic materials and workmanship. Given the overall retention of its historic appearance and character, the district also retains integrity of feeling and association.

Archaeological Component

Although no formal archaeological survey has been made of this area, the potential for subsurface remains is good. Buried portions may contain significant information that may be useful in interpreting the entire area.

Five Points South Historic District (BI & AD)
Name of Property

Jefferson, AL
County and State

8. Statement of Significance

Applicable National Register Criteria: (Mark "x" in one or more boxes for the criteria qualifying the property for National Register listing)

- A. Property is associated with events that have made a significant contribution to the broad patterns of our history.
- B. Property is associated with the lives of persons significant in our past.
- C. Property embodies the distinctive characteristics of a type, period, or method of construction or represents the work of a master, or possesses high artistic values or represents a significant and distinguishable entity whose components lack individual distinction.
- D. Property has yielded, or is likely to yield, information important in prehistory or history.

Criteria Considerations: (mark "x" in all the boxes that apply)

- A. Owned by a religious institution or used for religious purposes
- B. Removed from its original location
- C. A birthplace or grave
- D. A cemetery
- E. A reconstructed building, object, or structure
- F. A commemorative property
- G. Less than 50 years old or achieving significance within the past 50 years

Areas of Significance: (enter categories from instructions)

Architecture
Commerce

Period of Significance:

c. 1888-1973

Significant Dates:

N/A

Significant Person: (complete only if Criterion B is marked above)

N/A

Cultural Affiliation:

N/A

Architect / Builder:

Architect: Anders, Frank Hartley
Architect: Burnham, Brooke B.
Architect: Chambers, William N.
Architect: Davis, Speake and Associates
Architect: Gallup & Joy
Architect: Helmick, D. A.
Architect: Marye, P. Thornton
Architect: McCauley, Charles H., Associates
Architect: Miller & Martin

Five Points South Historic District (BI & AD)
Name of Property

Jefferson, AL
County and State

Architect: Price, Bern
Architect: Salie, Jacob E.
Architect: Sutcliffe, John
Architect: Turner, Joseph C.
Architect: Van Keuren & Davis
Architect: Walter, Thomas U., III
Architect: Warren, Knight, and Davis
Architect: Welton, William Leslie
Architect: Wheelock, Harry
Architect: Wheelock, Joy & Wheelock
Architect: Whitten, Lawrence S.
Builder: Robins Engineering

Statement of Significance Summary Paragraph: (Provide a summary paragraph that includes level of significance, applicable criteria, justification for the period of significance, and any applicable criteria considerations.)

The Five Points South Historic District Historic District is locally significant under National Register criterion A in the area of commerce as it illustrates the transitioning of a small portion of the Southside neighborhood from a predominantly residential area in the late 19th century to an area of mixed uses that included residential, office, and retail in the early to mid 20th century. The district is also locally significant under criterion C for its representative examples of late-19th to early 20th century residential and early to mid-20th century commercial architecture.

The period of significance for the Five Points South Historic District Historic District extends from circa 1888, the date of construction of its earliest surviving resources, through 1973, when the last contributing resource was constructed, after which there was no additional development in the district until circa 1980. Two resources within the district were constructed in 1970 and one was constructed in 1973.

Narrative Statement of Significance (Provide at least **one** paragraph for each area of significance.)

Criterion A: Commerce

Originally developed in the late 19th century as a residential area, the 1902 Sanborn map shows this area as predominantly residential, with only scattered stores interspersed with residences along 20th Street. By the time the 1911 Sanborn map was prepared, the area was still predominantly residential, but with increasing commercial development, especially at the corner of 20th Street and 11th Avenue S. This area expanded by the 1920s to define Five Points Circle. Five Points Circle, the focal point of the Five Points South Historic District, is an excellent example of a 1920s suburban shopping center and was the most fully-realized such complex in Birmingham and probably in the state. The 1920s development (Resources #113, 117, 122, 10, 9, 8, 5, 126, 127) along with the earlier stores and shops (Resources #120, 121, 123, 11) document the evolution of commercial development outside the central business district. They also provide one of the city's most complete records of that process between 1890 and 1930, a period in which small commercial groupings built to serve adjacent streetcar suburbs developed into larger shopping centers designed to attract clientele from the outlying automobile-oriented suburbs that grew up in the 1920s.

In the 1920s, redevelopment of the Circle (which had emerged in the 1890s as a commercial center to serve the streetcar town of Highland) was spearheaded by the R. S. Munger family. The Munger development (Resources #5, 126, 127) is significant for its comprehensive planning and quality. In addition to employing one of the city's leading architectural firms to design the buildings, the Mungers were most likely the first in suburban Birmingham to carefully analyze both tenant and customer composition to provide a high quality but noncompetitive group of stores offering goods and services specifically tailored to the needs of the surrounding middle and upper-middle class neighborhood and the new, affluent automobile suburbs to the south. When complete the development offered the widest range of goods and services available outside of the downtown business district. The Mungers also pioneered parking setbacks and were among the first outside the central business district to feature extensive electrical streetlighting.

Five Points South Historic District (BI & AD)

Jefferson, AL

Name of Property

County and State

The first commercial buildings were utilitarian frame structures centered around the streetcar junction at Five Points Circle; they housed family-owned groceries, pharmacies, and basic services such as shoe repair (Resources #120). In the 1910s the commercial district grew to serve an increasingly busy streetcar junction and expanding residential neighborhood: larger buildings of more architectural interest constructed of more substantial materials (some replacing earlier frame structures) housed businesses offering a wider range of goods and services (Resources #121 & 123). The nine stores constructed between 1922 and 1931 (Resources #113, 117, 122, 10, 8, 5, 126, & 127) clearly evidence the period's prosperity. Two of the stores housed a branch of the nation's first self-service grocery store, Piggly Wiggly (Resources #117, 121). In addition to stores, the commercial complex included the earliest neighborhood movie theater (1922, Inv. #9) and the city's first medical arts tower (1931, Resources #119; Photo #01, Left; #14). A final aspect of the 1920s development--and of the district's commercial evolution--is represented by the first office building constructed outside the central business district (by the state's oldest life insurance company, Southern Life & Health, 1927, Resources #151). By 1931, no other commercial concentration outside of downtown offered the range of amenities and quality as Five Points South.

Both residential and commercial development occurred in the 1930s leading up to the start of World War II in 1941. Birmingham's industrial section continued to prosper in the immediate post-war period, although increasing costs to comply with environmental regulations and competition from overseas suppliers resulted in a general decline in the city's industrial base by the late 1960s. The city took steps to grow other sectors of its economy, focusing its urban renewal efforts on the redevelopment of blighted areas around the Medical School of the University of Alabama at Birmingham. Despite recruiting additional new industries, the city's economy suffered during a recession in 1957. The Civil Rights conflicts of the 1950s and early 1960s, coupled with national trends toward suburbanization, resulted in the exodus of much of the city's white population to the suburbs. With a declining population, increasing perceptions of crime, downtown's attractiveness for shopping, entertainment, and office uses waned.

During the 1950s and 1960s, businesses in downtown struggled to compete with their suburban counterparts. Five Points South appears to have continued to prosper, as it was far enough away from the downtown commercial core to still be considered safe and attractive for businesses. New buildings and the remodeling of older buildings in the area were typically of modern streamlined designs of the period intended to show the progressiveness of the businesses involved in order to compete with their more suburban counterparts.

Among the major commercial buildings constructed or remodeled in Five Points after World War II are the Exchange Bank (1947, Resources #112), the office building at 2004 13th Ave. S (c. 1950, Resource #38), America Fore Insurance Group Building¹ (1954, Resource #1; Photos #16, Right), the American Liberty Insurance Co. Building, designed by architect Lawrence S. Whitten (1956, Resource #138; Photo #40), Magnolia Office Park (1966, Resource #155; Photo #21), Magnolia Office Park Plaza Building (1968, Resource #15; Photo #23), Five Points South Office Bld. (1968, Resource #3; Photo #19), The Round Building (1970, Resource #47; Photo #38). A 14-story apartment building was constructed on Highland Avenue c. 1957 and was developed by Central States-Southeast Areas Pension Fund as Sheraton Motor Inn (Resource #147; Photo #32). Although the building had seen alterations including extensive window replacement, it retains its over form and design and visually dominates the streetscape. Another high-rise building on 10th Avenue S is the 12-story Birmingham Building Trades Tower constructed in 1969 (Resource #3). Designed by Charles H. McCauley Associates and built by Robbins Engineering, Inc., the building was developed by the Birmingham Building and Construction Trades Council and originally rented only to the "working class elderly at absolute cost." In 1973, Southern Life and Health Insurance Company Building built the last major office building constructed prior to 1980 (Resource #149; Photo #37), designed by Davis, Speake and Associates.

After 1980, development in the neighborhood appears to have been relatively stagnant. The construction of the Pickwick Plaza (Resource #154; Photo #15) in 1987 and remodeling of the building that year to serve as a hotel are the notable exceptions. In recent years, the encroachment of the University of Alabama Birmingham to the north of the neighborhood has couple with a general revitalization of Birmingham's center city to put increasing development pressure on the neighborhood.

¹ The correct name is America Fore Insurance Group Building, not "fire" insurance.

Five Points South Historic District (BI & AD)

Jefferson, AL

Name of Property

County and State

Criterion C: Architecture

The Five Points South Historic District is significant because of the exceptional quality and range of its architecture: it contains the largest and best concentration of 1920s Art Deco style buildings in the state, some excellent local examples of other 1920s commercial styles, six notable religious buildings, a collection of distinguished early apartment buildings, an outstanding Colonial Revival school and some of the best of the city's oldest domestic architecture. The styles exemplify popular domestic and commercial tastes for the period: Art Deco, Spanish and Italian Revival, Beaux Arts, Roman Revival, Georgian Revival, Renaissance Revival, English Gothic Revival, Queen Anne Victorian cottage, Colonial Revival, Craftsman and Tudor Revival. They are good examples of the work of leading architects in the city between 1890 and 1931.

The heart of the district is Five Points Circle, a unique Birmingham urban space that has the sense of a European plaza and a sophisticated visual unity derived from siting and formal relationships as well as similar styles (Art Deco and Spanish Revival) and materials.

In the immediate vicinity of the Circle are four large Art Deco storefronts (three of them, Resources #122, 5, 126, designed by the firm Miller & Martin) and an Art Deco skyscraper (1930, Charles H. McCauley, Resource #118). Other noteworthy commercial buildings nearby include the Spanish Revival style stores on the Circle (1926, Miller & Martin, Resource #77), the ornate Italian Renaissance style Shepherd-Sloss Building (1928, Charles H. McCauley, Resource #126), and the Renaissance Revival style Southern Life & Health Insurance Co. Building (1927, Warren, Knight & Davis, Resource #150). Within the district are an impressive number of landmark churches important for their design quality and as good examples of several architectural styles. St. Mary's-on-the-Highland Episcopal Church (1892, John Sutcliffe, Resource #19) and South Highland Presbyterian Church (1892, D. A. Helmich, Resource #146; Photo #36) are distinctive expressions of the English Gothic Revival style. Others are the Spanish Renaissance Revival style Highlands United Methodist Church (1909, P. Thornton Marye, Resource #124; Photo #2, Right; #3), the Roman Revival style Southside Baptist Church (1911, William Leslie Welton, Resource #83; Photo #53), the Jeffersonian Roman Revival style First Church of Christ, Scientist (1911, Joseph C. Turner, Resource #14), and the Beaux Arts style Temple Emanu-El (1914, William C. Weston, Resource #148; Photo #31). Apartments in the Five Points district not only document the evolution of the form between 1905 and 1926, including the entire range of types (fourplex through multistory) found in the city, but also include the city's--and perhaps the Southeast's--first skyscraper apartment, Terrace Court (1907, William C. Weston, Resource #129; Photo #5, Left). Finally, the district contains an important collection of the city's early domestic architecture, including three of its oldest houses (rare survivors of the Town of Highland, which existed before this area became part of the city of Birmingham: the Boddie House, c. 1887, gone, the McCants House, 1888, Resource #91, and the Nabers House, c. 1890, gone), and the city's most complete record of domestic architecture dating from the turn of the century (c. 1895-1902), including such rare remnants of local high style design of the period as the Hassinger House (1898, T. U. Walter, III, Resource #144; Photo #34), one of the city's most fully developed examples of the transition from late 19th-century Victorian forms to a more restrained, classically derived style and the Lathrop House (c. 1901, probably William C. Weston, gone), an outstanding example of the Classical Revival style.

The architectural development of the district in the immediate post-World War II period mirrored national trends with Art Moderne and Mid-Century Modern being the dominant stylistic choice. The Art Moderne style Exchange Bank (1947 Resource #111), has a raised central rectangular block with flanking flat-roofed wings and is clad with concrete to resemble cut stone. Mid-Century Modern (also referred to as Post-War International) buildings took the streamlining process and are typified by the use of broad expanses of window walls to create "visual front" display windows, aluminum awnings and canopies, projecting vertical elements, and blank wall panels. Examples include the America Fore Insurance Group Building (1954, Resource #1; Photos #16, Right; #17), the American Liberty Insurance Co. Building (1956, Resource #137; Photo #40), and the Prudential Insurance Co. Bld. (1961, Resource #157; Photo #25).

The Five Points South Office Building (1968, Resource #3; Photo #19) and the Birmingham Building Trades Tower (1968, Resource #2, 1969; Photo #20) illustrate a transition away from the Mid-Century Modern style to modern designs that do not fit a particular identified style. Later office buildings from the period 1966 to 1973 are typical of the period and exhibit some features of the New Formalism style: Magnolia Office Park (1966, Resource #155; Photo #21), Magnolia Office Park Plaza Building (1968, Resource #15; Photo #23), Southern Life and Health Insurance Company Building (1973, Resource #149; Photo #37).

Five Points South Historic District (BI & AD)

Jefferson, AL

Name of Property

County and State

Developmental History/Additional historic context information.

(adapted from the National Register nomination for the adjacent Magnolia Avenue South Historic District by Schneider Historic Preservation, LLC.

Much of the district was located on a parcel of land that was owned by George W. Clift in 1870.² The area was largely undeveloped until the mid-1880s when local developers began looking for alternative areas in which to expand the city. Michael W. Fazio in Landscape of Transformations: Architecture in Birmingham, Alabama states:

In the 1880s, while busily increasing their individual fortunes, Birmingham's well-to-do broke out of the Elyton Land Company's downtown grid north of the rail reservation and, following the newest mule-drawn-streetcar lines, began positioning their residences principally along two corridors of prosperity: Twentieth and Twenty-first streets south. Among them was Robert Jemison Sr., who in 1884 built his first home in the city, a Queen Anne style profusion of blocky masses, angular roofs, and seemingly endless glassy windows and spindled porches.³

Fazio continues:

In 1884, as the Elyton Land Company began promoting the "South Highlands" for their relatively healthy elevation above the Magic City's smoke and grime and some of its heat, the first Birmingham neighborhoods appeared that were separated—both in the reality of local geography and, perhaps more important, in imagining of local minds—from downtown and its attendant heavy industry. In 1887, on land purchased from the Elyton Land Company, citizens fleeing Jones Valley established the town of Highlands around the southward extension of Twentieth Street at Eleventh Avenue (north and west of today's Five Points South). Overlooking the restive city to the north, this new community became a fulcrum for residential construction to the east and west.⁴

The 1887 Atlas of the City of Birmingham and Suburbs shows this area as being part of what was then called South Highlands. The present street pattern was fully developed by that time. This area is depicted with larger residential structures on large lots.⁵ The area is also shown on the 1888 Map of the City of Birmingham, Alabama and Suburbs.

This area is only shown in sketch form on the 1891 Sanborn map as part of a larger area still referred to as South Highlands. The city line is shown as then extending along the centerline of Magnolia Avenue.

The 1991 expansion of the district included the following additional description:

The expanded area of the Five Points Historic District shares the same statement of significance and period of significance as the original historic district. The expanded area is locally significant under Criterion C for its collection of early twentieth-century middle-class single-family residential and apartment building architecture. The styles represented in the expanded area, Queen Anne Victorian, Colonial Revival, Tudor Revival, Spanish Revival, and modest Craftsman, are typical of the styles found in the original district nomination. One property was designed by Harry Wheelock, a prominent Birmingham architect who was responsible for many of the buildings located in the original historic district. All of the buildings in the expanded area were constructed within the period of significance stated in the original district nomination: 1887 through 1936.

Context

The Magnolia Avenue South Historic District is contiguous with the Five Points Historic District. Together, the two historic districts record the core developed commercial area of the Five Points South area of the city.

² Robert L. Totten, Totten's Map of Birmingham and Vicinity (Birmingham: Roberts and Son, 1921; annotated with overlay of original land owners of 1870), Birmingham Public Library Cartography Collection, <http://alabamamaps.ua.edu>.

³ Michael W. Fazio, Landscape of Transformations: Architecture in Birmingham, Alabama (Knoxville, TN: University of Tennessee Press, 2010), p. 75.

⁴ *Ibid.*, pp. 75-76

⁵ Atlas of the City of Birmingham and Suburbs (New York, Beers, Ellis, and Co., 1887), Birmingham Public Library Cartography Collection, <http://alabamamaps.ua.edu>.

Five Points South Historic District (BI & AD)
Name of Property

Jefferson, AL
County and State

9. Major Bibliographic References

Bibliography (cite the books, articles, and other sources used in preparing this form)

Ancestry.com. Alabama, Select Marriages, 1816-1942 [database on-line]. Provo, UT, USA: Ancestry.com Operations, Inc. 2014.

Ancestry.com. 1880-1940 United States Federal Census [database on-line]. Provo, UT, USA: Ancestry.com Operations, Inc., 2012.

Birmingham, AL. Jefferson County Board of Equalization Records. Birmingham Public Library Archives.

_____. Manuscript Collection. Birmingham Public Library, Department of Archives, Birmingham, Alabama.

Baist, G. W. Baist's Property Atlas of the City of Birmingham and its Suburbs. Philadelphia, PA, 1902.

Beers, Ellis & Co., New York. Atlas of the City of Birmingham and Suburbs, Alabama. New York, 1887-88.

Birmingham, AL City Directories, 1888-1960.

Burkhardt, Ann M. and Alice M. Bowsher. "National Register Nomination for the Birmingham Five Points South Historic District (expansion)." Montgomery, AL: Alabama Historical Commission, 1986.

Cruikshank, George. A History of Birmingham and its Environs. Volume II. Chicago: The Lewis Publishing Company, 1920.

Eskew, Glenn T. But for Birmingham: The Local and National Movements in the Civil Rights Struggle. Chapel Hill: University of North Carolina Press, 1997.

Fazio, Michael W. Landscape of Transformations: Architecture in Birmingham, Alabama. Knoxville, TN: University of Tennessee Press, 2010.

Feldman, Lynne B. A Sense of Place: Birmingham's Black Middle-class Community, 1890-1930. Tuscaloosa, AL: University of Alabama Press, 1999.

Hudson, Alvin W. and Harold E. Cox. Street Railways of Birmingham. Harold E. Cox, Forty Fort, Pennsylvania: 1976.

Kelley, George B. Map of Birmingham, Alabama and Adjacent Suburbs. Birmingham, AL: n.p., 1903). W.S. Hoole Special Collections Library, <http://alabamamaps.ua.edu>.

Norton, Bertha Bendall. Birmingham's First Magic Century. Bertha Bendall Norton, 1970.

Rogers, William Warren, et. al. Alabama: The History of a Deep South State. Tuscaloosa, AL: University of Alabama Press, 1994.

Sanborn Fire Insurance Maps 1891, 1902, 1911, and 1951.

Satterfield, Carolyn. Historic Sites of Jefferson County. Birmingham, AL: Gray Publishing Company, Inc., 1976.

Schoel, H. Map of the City of Birmingham, Alabama and Suburbs. Chicago: Rand McNally & Co., 1888; for the Elyton Land Co., Alabama Department of Archives and History, <http://alabamamaps.ua.edu>.

Schneider, David B. "National Register Nomination for the Birmingham Magnolia Avenue South Historic District." Montgomery, AL: Alabama Historical Commission, 2018.

Five Points South Historic District (BI & AD)
Name of Property

Jefferson, AL
County and State

Stella, Stephen. "National Register Nomination for the Downtown Birmingham Historic District Montgomery, AL: Alabama Historical Commission 1984.

Totten, Robert L. Totten's Map of Birmingham and Vicinity. Birmingham: Roberts and Son, 1921; annotated with overlay of original land owners of 1870), Birmingham Public Library Cartography Collection, <http://alabamamaps.ua.edu>.

White Marjorie L. Downtown Birmingham Architectural and Historical Walking Tour Guide. Birmingham AL: Birmingham Historical Society, 1977.

The Birmingham District An Industrial History and Guide. Birmingham, AL: Birmingham Historical Society, 1981.

Previous documentation of file (NPS):

- preliminary determination of individual listing (36 CFR 67) has been requested
- previously listed in the National Register
- previously determined eligible by the National Register
- designated a National Historic Landmark
- recorded by Historic American Buildings Survey # _____
- recorded by Historic American Engineering Record # _____
- recorded by Historic American Landscape Survey # _____

Primary location of additional data:

- State Historic Preservation Office
 - Other State agency
 - Federal agency
 - Local government
 - University
 - Other
- Name of repository: _____

Historic Resources Survey Number (if assigned): _____

Five Points South Historic District (BI & AD)
Name of Property

Jefferson, AL
County and State

10. Geographical Data

Acreeage of Property 82

Use either the UTM system or latitude/longitude coordinates

Latitude/Longitude Coordinates (decimal degrees)

Datum if other than WGS84:

Enter coordinates to 6 decimal places.

1. Latitude:	Longitude:
2. Latitude:	Longitude:
3. Latitude:	Longitude:
4. Latitude:	Longitude:

OR

UTM References

Datum (indicated on USGS map):

NAD 1927 or **NAD 1983**

1. Zone:	16	Easting:	518533	Northing:	3706572
2. Zone:	16	Easting:	518868	Northing:	3706926
3. Zone:	16	Easting:	519288	Northing:	3706655
4. Zone:	16	Easting:	519281	Northing:	3706134
5. Zone:	16	Easting:	518576	Northing:	3706079

Verbal Boundary Description (describe the boundaries of the property)

The boundary of the Five Points South Historic District is shown on the accompanying map, entitled "Five Points South Historic District.". The scale is 1" equals 300'.

Boundary Justification (explain why the boundaries were selected)

The nominated property contains properties that are historically associated with the Five Points South Historic District.

Five Points South Historic District (BI & AD)
Name of Property

Jefferson, AL
County and State

11. Form prepared by:

Name/Title: David B. Schneider

Organization: Schneider Historic Preservation, LLC; Alabama Historical Commission

Street & number: 411 E. 6th Street; 468 S. Perry St.

City/Town: Anniston; Montgomery State: AL Zip Code: 36207; 36130

Email: dbschneider@bellsouth.net Phone: 256.310.6320

Date: April 30, 2019; revised 6/4/2019; revised 7/9/2019

Additional Documentation

Submit the following items with the completed form:

- **Maps:** A USGS map or equivalent (7.5 or 15-minute series) indicating the property's location.
- **Sketch map** for historic districts and properties having large acreage or numerous resources. Key all photographs to this map.
- **Additional items:** Check with the SHPO, TPO, or FPO for any additional items.

Five Points South Historic District (BI & AD)
Name of Property

Jefferson, AL
County and State

Photographs

Submit clear and descriptive photographs. The size of each image must be 1600x1200 pixels (minimum), 3000x2000 preferred, at 300 ppi (pixels per inch) or larger. Key all photographs to the sketch map. Each photograph must be numbered and that number must correspond to the photograph number on the photo log. For simplicity, the name of the photographer, photo date, etc. may be listed once on the photograph log and doesn't need to be labeled on every photograph.

Photo Log

Name or Property: Five Points South Historic District (3rd Expansion)
City or Vicinity: Birmingham
County: Jefferson State: AL
Photographer: David Schneider
Date Photographed: January 2019

Description of Photograph(s) and number, include description of view indicating direction of camera:

Photo #01 (Image: AL_JeffersonCo_FivePointsSouthHD3rdExpansion_0001)
Streetscape, Five Points Intersection, camera facing north.

Photo #02 (Image: AL_JeffersonCo_FivePointsSouthHD3rdExpansion_0002)
Streetscape, Five Points Intersection, camera facing northeast.

Photo #03 (Image: AL_JeffersonCo_FivePointsSouthHD3rdExpansion_0003)Streetscape, Five Points Intersection, Highlands United Methodist Church, Resource #124, camera facing northeast.

Photo #04 (Image: AL_JeffersonCo_FivePointsSouthHD3rdExpansion_0004)
Streetscape, Five Points Intersection, Spanish Stores, Resource #126, camera facing southeast.

Photo #05 (Image: AL_JeffersonCo_FivePointsSouthHD3rdExpansion_0005)
Streetscape, Five Points Intersection, camera facing south.

Photo #06 (Image: AL_JeffersonCo_FivePointsSouthHD3rdExpansion_0006)
Streetscape, Five Points Intersection, camera facing northwest.

Photo #07 (Image: AL_JeffersonCo_FivePointsSouthHD3rdExpansion_0007)
Streetscape, 20th St. S, 1000-2000 blocks, east side, camera facing north.

Photo #08 (Image: AL_JeffersonCo_FivePointsSouthHD3rdExpansion_0008)
Streetscape, Highland Ave. S, 2000 block, south side, camera facing east.

Photo #09 (Image: AL_JeffersonCo_FivePointsSouthHD3rdExpansion_0009)
Streetscape, 11th Ave. S, 1000 block, north side, camera facing west.

Photo #10 (Image: AL_JeffersonCo_FivePointsSouthHD3rdExpansion_0010)
Streetscape, 11th Ave. S, 1000 block, camera facing northeast.

Photo #11 (Photo # Image: AL_JeffersonCo_FivePointsSouthHD3rdExpansion_0011)
Fred Jones Building (Resource #5), camera facing southeast.

Photo #12 (Image: AL_JeffersonCo_FivePointsSouthHD3rdExpansion_0012)
Streetscape, 20th St. S, 1000 block, west side, camera facing northwest.

Photo #13 (Image: AL_JeffersonCo_FivePointsSouthHD3rdExpansion_0013)
Piggly Wiggly Food Store facade (Resource #116), camera facing southwest.

Five Points South Historic District (BI & AD)

Jefferson, AL

Name of Property

County and State

Photo #14 (Image: AL_JeffersonCo_FivePointsSouthHD3rdExpansion_0014)
Medical Arts Building (Resource #118), camera facing southeast.

Photo #15 (Image: AL_JeffersonCo_FivePointsSouthHD3rdExpansion_0015)
Pickwick Plaza (Resource #154), camera facing northeast.

Photo #16 (Image: AL_JeffersonCo_FivePointsSouthHD3rdExpansion_0016)
Streetscape, 10th Ave. S, 1900-2000 blocks, south side, camera facing northeast.

Photo #17 (Image: AL_JeffersonCo_FivePointsSouthHD3rdExpansion_0017)
America Fore Insurance Group Building (Resource #1), camera facing southeast.

Photo #18 (Image: AL_JeffersonCo_FivePointsSouthHD3rdExpansion_0018)
Exchange Bank (Resource #111), camera facing north.

Photo #19 (Image: AL_JeffersonCo_FivePointsSouthHD3rdExpansion_0019)
Five Points South Office Bld. (Resource #3), camera facing north.

Photo #20 (Image: AL_JeffersonCo_FivePointsSouthHD3rdExpansion_0020)
Birmingham Building Trades Tower (Resource #2), camera facing northwest.

Photo #21 (Image: AL_JeffersonCo_FivePointsSouthHD3rdExpansion_0021)
Magnolia Office Park (Resource #155), camera facing southeast.

Photo #22 (Image: AL_JeffersonCo_FivePointsSouthHD3rdExpansion_0022)
Streetscape, northeast corner of Richard Arrington Jr. Blvd. and 11th Ave. S, camera facing northeast.

Photo #23 (Image: AL_JeffersonCo_FivePointsSouthHD3rdExpansion_0023)
Magnolia Office Park Plaza Building (Resource #15), camera facing north.

Photo #24 (Image: AL_JeffersonCo_FivePointsSouthHD3rdExpansion_0024)
Streetscape, 11 Ave. N, 2100 block, camera facing northeast.

Photo #25 (Image: AL_JeffersonCo_FivePointsSouthHD3rdExpansion_0025)
Prudential Insurance Co. Bld. (Resource #157), camera facing east.

Photo #26 (Image: AL_JeffersonCo_FivePointsSouthHD3rdExpansion_0026)
Barnett-Calhoun House (Resource #162), camera facing west.

Photo #27 (Image: AL_JeffersonCo_FivePointsSouthHD3rdExpansion_0027)
Frank Anderson House (Resource #16), camera facing northwest.

Photo #28 (Image: AL_JeffersonCo_FivePointsSouthHD3rdExpansion_0028)
Charleston Apartments (Resource #17), camera facing southeast.

Photo #29 (Image: AL_JeffersonCo_FivePointsSouthHD3rdExpansion_0029)
Leo Building Mural (Resource #152), camera facing northwest.

Photo #30 (Image: AL_JeffersonCo_FivePointsSouthHD3rdExpansion_0030)
Streetscape, Highland Ave. S, 2000-2100 blocks, north side, camera facing northwest.

Photo #31 (Image: AL_JeffersonCo_FivePointsSouthHD3rdExpansion_0031)
Temple Emanu-El (Resource #148), camera facing north.

Five Points South Historic District (BI & AD)

Jefferson, AL

Name of Property

County and State

Photo #32 (Image: AL_JeffersonCo_FivePointsSouthHD3rdExpansion_0032)
Sheraton Motor Inn (Resource #147), camera facing northwest.

Photo #33 (Image: AL_JeffersonCo_FivePointsSouthHD3rdExpansion_0033)
Streetscape, Highland Ave. S, 2000 block, north side, camera facing northwest.

Photo #34 (Image: AL_JeffersonCo_FivePointsSouthHD3rdExpansion_0034)
William H. Hassinger House (Resource #144), camera facing north.

Photo #35 (Image: AL_JeffersonCo_FivePointsSouthHD3rdExpansion_0035)
Streetscape, northeast corner of 20th St. S and Highland Ave. S, camera facing northeast.

Photo #36 (Image: AL_JeffersonCo_FivePointsSouthHD3rdExpansion_0036)
South Highland Presbyterian Church (Resource #146), camera facing southwest.

Photo #37 (Image: AL_JeffersonCo_FivePointsSouthHD3rdExpansion_0037)
Southern Life and Health Insurance Company Building, (Resource #149), camera facing southeast.

Photo #38 (Image: AL_JeffersonCo_FivePointsSouthHD3rdExpansion_0038)
The Round Building (Resource #47), camera facing northwest.

Photo #39 (Image: AL_JeffersonCo_FivePointsSouthHD3rdExpansion_0039)
Phoenix Apartments & Pharmacy (Resource #161), camera facing northwest.

Photo #40 (Image: AL_JeffersonCo_FivePointsSouthHD3rdExpansion_0040)
American Liberty Insurance Co. Building (Resource #137), camera facing southeast.

Photo #41 (Image: AL_JeffersonCo_FivePointsSouthHD3rdExpansion_0041)
Streetscape, 20th St. S, 1100-1200 blocks, camera facing north.

Photo #42 (Image: AL_JeffersonCo_FivePointsSouthHD3rdExpansion_0042)
Office Building (Resource #38), camera facing north.

Photo #43 (Image: AL_JeffersonCo_FivePointsSouthHD3rdExpansion_0043)
Newton Manor Apartments (Resource #134), camera facing north.

Photo #44 (Image: AL_JeffersonCo_FivePointsSouthHD3rdExpansion_0044)
Rogers-Taylor House (Resource #42), camera facing southeast.

Photo #45 (Image: AL_JeffersonCo_FivePointsSouthHD3rdExpansion_0045)
Streetscape, northeast corner of 13th Ave. S and 19th St. S, camera facing north.

Photo #46 (Image: AL_JeffersonCo_FivePointsSouthHD3rdExpansion_0046)
Streetscape, 19th St. S, 1300 block, east side, camera facing northwest.

Photo #47 (Image: AL_JeffersonCo_FivePointsSouthHD3rdExpansion_0047)
Streetscape, 19th St. S, 1200 block, east side, camera facing north.

Photo #48 (Image: AL_JeffersonCo_FivePointsSouthHD3rdExpansion_0048)
House (Resource #21), camera facing southeast.

Photo #49 (Image: AL_JeffersonCo_FivePointsSouthHD3rdExpansion_0049)
Streetscape, 13th Ave. S, 1700 block, camera facing northeast.

Photo #50 (Image: AL_JeffersonCo_FivePointsSouthHD3rdExpansion_0050)

Five Points South Historic District (BI & AD)
Name of Property

Jefferson, AL
County and State

Ramsay High School (Resource #36), camera facing north.

Photo #51 (Image: AL_JeffersonCo_FivePointsSouthHD3rdExpansion_0051)
St. Mary's-on-the-Highlands Episcopal Church (Resource #19), camera facing north.

Photo #52 (Image: AL_JeffersonCo_FivePointsSouthHD3rdExpansion_0052)
Streetscape, 19th St. S, 1100 block, west side, camera facing northwest.

Photo #53 (Image: AL_JeffersonCo_FivePointsSouthHD3rdExpansion_0053)
Southside Baptist Church (Resource #83), camera facing northwest.

Photo #54 (Image: AL_JeffersonCo_FivePointsSouthHD3rdExpansion_0054)
Stratford-Avon Apartments (Resource #79, right) and Warwick Apartments (Resource #80, left), camera facing southwest.

Photo #55 (Image: AL_JeffersonCo_FivePointsSouthHD3rdExpansion_0055)
Office Building (Resource #84), camera facing northeast.

Photo #56 (Image: AL_JeffersonCo_FivePointsSouthHD3rdExpansion_0056)
Saipan Apartments (Resource #48-49), camera facing northeast.

Photo #57 (Image: AL_JeffersonCo_FivePointsSouthHD3rdExpansion_0057)
Streetscape, 15th Ave. S, 1900 block, S side, camera facing east.

Photo #58 (Image: AL_JeffersonCo_FivePointsSouthHD3rdExpansion_0058)
Streetscape, 16th Ave. W, 1900 block, S side, camera facing southwest.

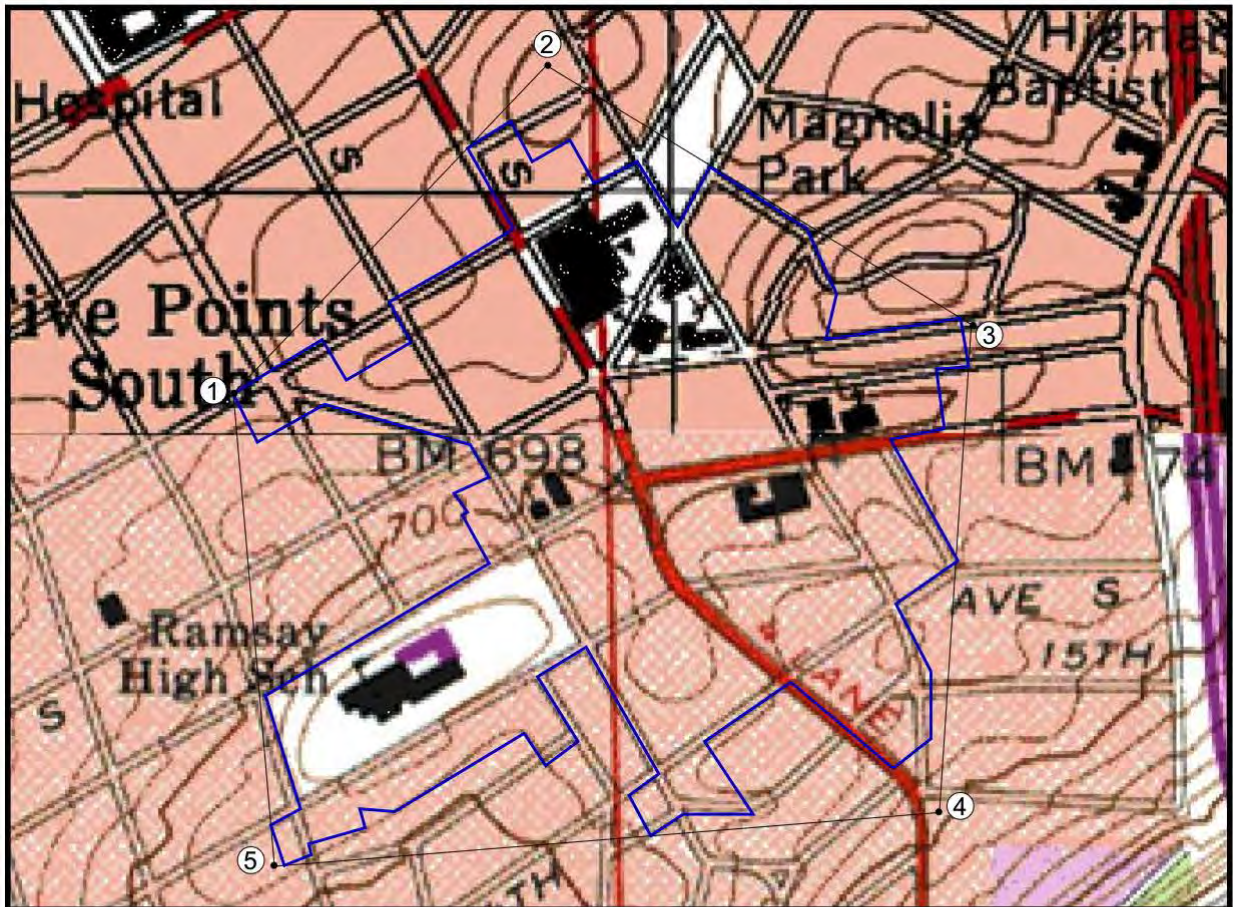
Photo #59 (Image: AL_JeffersonCo_FivePointsSouthHD3rdExpansion_0059)
Streetscape, 19th St. S, 1500 block, W side, camera facing southwest.

Photo #60 (Image: AL_JeffersonCo_FivePointsSouthHD3rdExpansion_0060)
Letchworth Apartments (Resources #59-#66), camera facing southeast..

Five Points South Historic District (BI & AD)
Name of Property

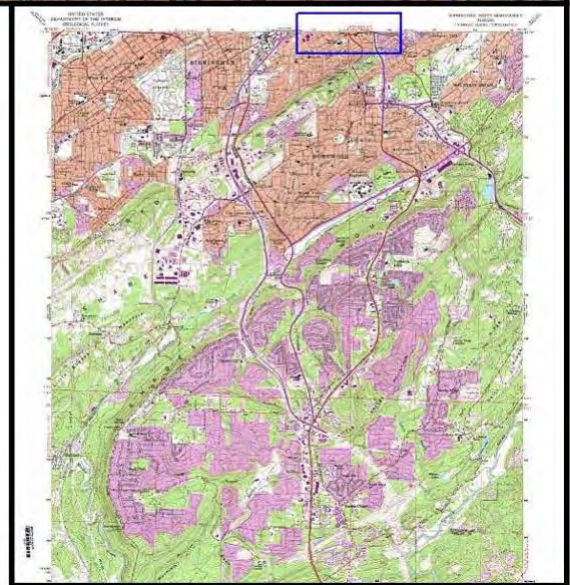
Jefferson, AL
County and State

U.S.G.S. Topographic Map



U.S.G.S. Topographic Maps
Birmingham North Quadrangle
Birmingham South Quadrangle

- 1: 16 / 518533E / 3706572N
- 2: 16 / 518868E / 3706926N
- 3: 16 / 519288E / 3706655N
- 4: 16 / 519281E / 3706134N
- 5: 16 / 518576E / 3706079N



Five Points South Historic District (BI & AD)
Name of Property

Jefferson, AL
County and State

Paperwork Reduction Act Statement: This information is being collected for applications to the National Register of Historic Places to nominate properties for listing or determine eligibility for listing, to list properties, and to amend existing listings. Response to this request is required to obtain a benefit in accordance with the National Historic Preservation Act, as amended (16 U.S.C.460 et seq.).


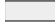


Estimated Burden Statement: Public reporting burden for this form is estimated to average 100 hours per response including time for reviewing instructions, gathering and maintaining data, and completing and reviewing the form. Direct comments regarding this burden estimate or any aspect of this form to the Office of Planning and Performance Management, U.S. Dept. of the Interior, 1849 C. Street, NW, Washington, DC.

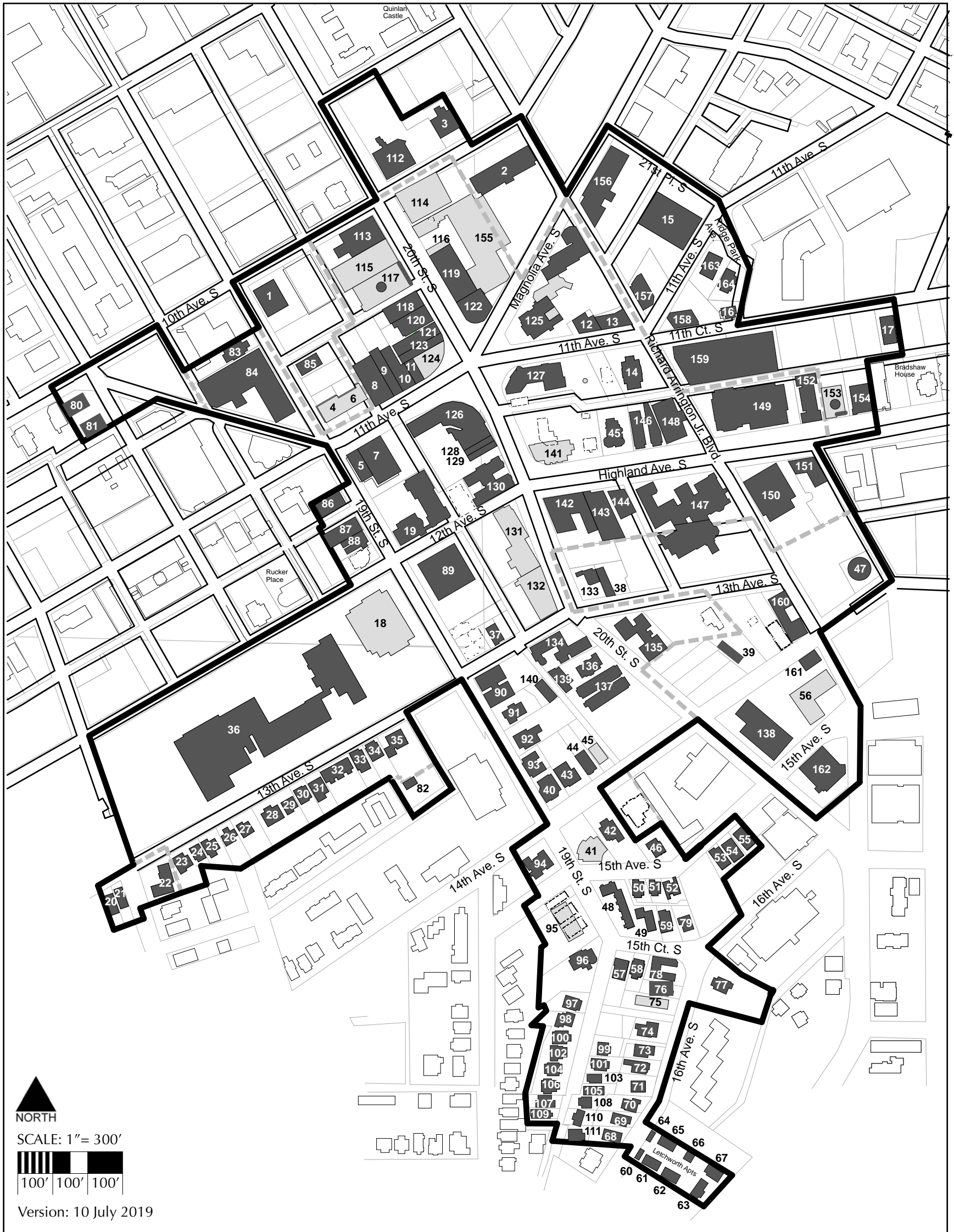
FIVE POINTS SOUTH HISTORIC DISTRICT

3rd Expansion, 2019

Birmingham, Jefferson Co., Alabama

KEY:

-  Contributing
-  Noncontributing
-  District Boundary
-  Former District Boundary



SCHNEIDER
HISTORIC PRESERVATION, LLC

Effective, Pragmatic and Creative Advocacy Since 1981





411 East 6th Street, Anniston, Alabama 36207
Phone 256.310.6320

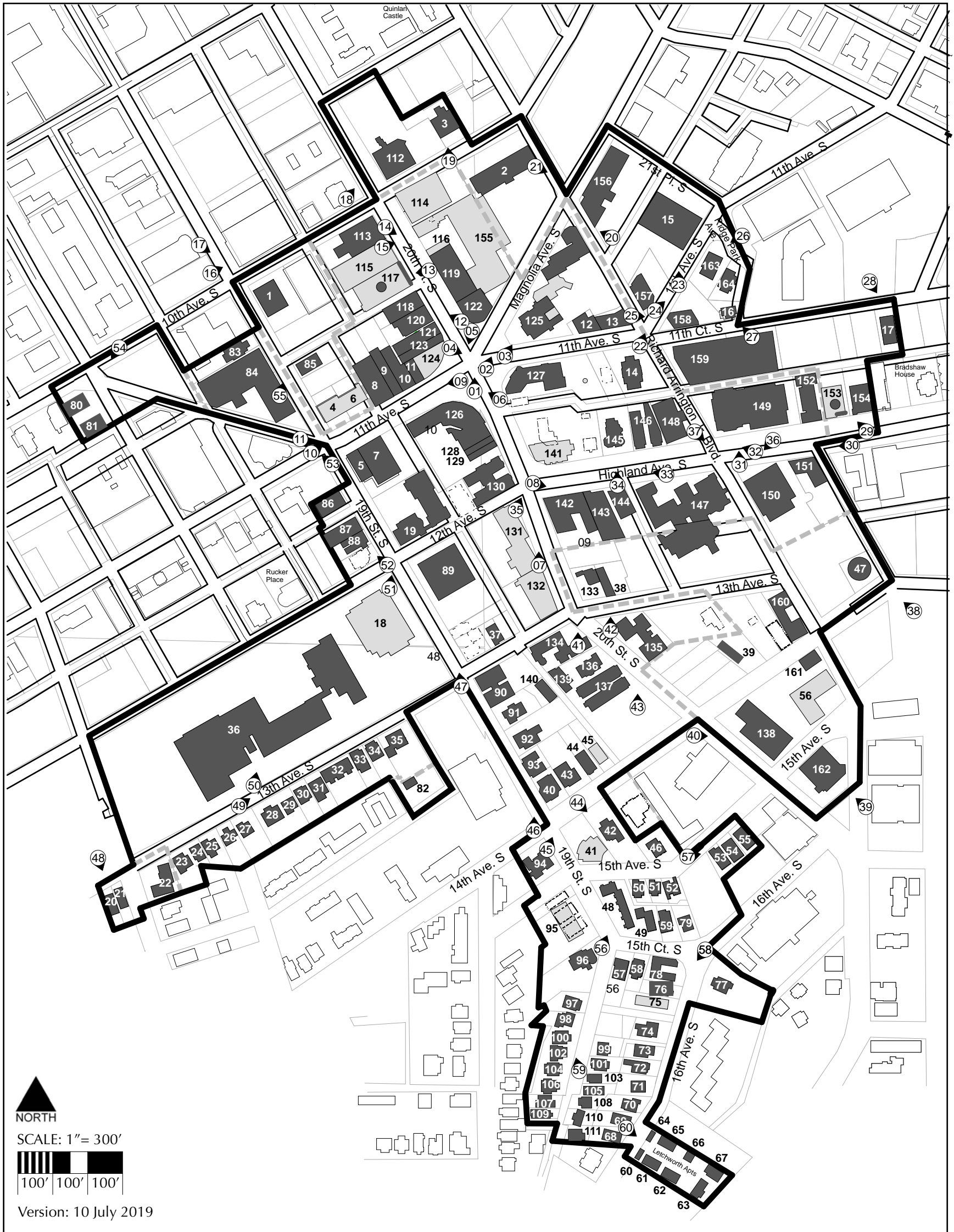
www.shphistoric.com

FIVE POINTS SOUTH HISTORIC DISTRICT

3rd Expansion, 2019
Birmingham, Jefferson Co., Alabama

PHOTO KEY

- KEY:**
-  Contributing
 -  Noncontributing
 -  District Boundary
 -  Former District Boundary



SCHNEIDER
HISTORIC PRESERVATION, LLC

Effective, Pragmatic and Creative Advocacy Since 1981

411 East 6th Street, Anniston, Alabama 36207
Phone 256.310.6320

www.shphistoric.com



hotel INDIGO

BLACK WAVE
BAR+GRILL

BLACK WAVE
EST. 2008
BAR+GRILL

P



PERFORMANCE
FOODSERVICE
Home & Castle...

ONE WAY

HIGHLANDS UNITED METHODIST CHURCH

HIGHLANDS
UNITED METHODIST CHURCH
ALL
SUN 8:00
SUN 10:00
WED 7:00

POINTS SOUTH



HIGHLANDS UNITED METHODIST CHURCH

HIGHLANDS

ONE WAY



FIVE POINTS SOUTH

ONE WAY



GOOObar

Pancake House

AKE HO

TER



00bar

Waffle House

HOMEWOOD SUITES



INDIGO

W 27th Ave
W 28th Ave

THE ORIGINAL CHICKEN SANDWICH

POP'S
NEIGHBORHOOD GRILL

POP'S
NEIGHBORHOOD GRILL
BREAKFAST
MONDAY
8 AM TO 6 PM

P
2
8 AM
TO
6 PM



SCHAEFFER EYE CENTER

Office Space
Available
with Parking
995-9119
Barber Companies

For Lease
995-9119

For Lease
995-9119



SIKY

Charlemagne Records

LUIGI TRANK'S
Pizza & Pints

SURIN

JOHN'S
M-H

NICK'S
FRIG

2553AV8

2072NS

1Y5454

1Y5353

1Y5353

1Y5353

1Y5353

1Y5353

1Y5353

1Y5353

1Y5353

1Y5353

19th St S



2 HOUR
8 AM TO
5 PM





BIRMINGHAM FESTIVAL THEATRE ↑

Golden Temple Cafe

Organic Coffee

Whole Fruit Smoothies

CELEBRATING 45 YEARS

RAMY'S POINTS

Espresso
Cappuccino
Latte

2 HOUR PARKING
8 AM TO 6 PM

THEATRE



BIRMINGHAM
BIRMINGHAM

Nature's Own
100% Whole Wheat
Whole Grain
No Artificial Preservatives, Colors or Flavors
No High Fructose Corn Syrup
14g Whole Grain

Nature's Own
Honey Wheat

CLOUD NINE

TAT TOO
PIERCINGS

WOOD SUITES

TATTOOS

NEW CHINA TOWN

HOMWOOD SUITES BY HILTON



HOMWOOD SUITES
Hilton



Clearance 12'-00"





COMING SOON
HOTEL INDIGO

SLEEK
SPORTS BAR

THE WOODWORTH

WICKLIFF PLACE

RESTAURANT





FIVE POINTS
HARDWARE
CUSTOMER PARKING

RWDSU
UNIVERSITY OF ALABAMA
AT RUSSELLVILLE

19th St

19th St

UAB BLAZERS



RWDSU
Retail • Wholesale • Department Store • Union



2 HOUR PARKING
8 AM TO 6 PM





EXCHANGE
BANK

Advertisement sign on a sidewalk.

FOR LEASE
CHIP WATTS, CPM CCIM
WATTS REALTY COMPANY
wattsrealty.com

2016
FIVE POINTS SOUTH OFFICE BUILDING

PRIVATE
PARKING
ONLY
200 W. 5th
AV. SOUTH

Gregory C. Starkey
and Associates
ATTORNEYS AT LAW
205-581-9790

NO PARKING
ANY TIME
→





BUILDING
TRADES
TOWERS

The
Magnum Building
Merrill
Oliver Park
1000 BAYVIEW DRIVE
BAYVIEW, MI 48064
BAYVIEW NORTH SERVICE
TRADING & CONTRACTORS
1000 BAYVIEW DRIVE, STE. 100
BAYVIEW, MI 48064
PH: 313.963.1000

P
NO
LEFT
TURN



PUBLIC TELEVISION

ONE WAY



ONE WAY

2117

ALABAMA PUBLIC TELEVISION

datahouse

11th Ave S

ONE WAY

ONE WAY

P
ARKING

NO
PARKING
ANY
TIME

1101



ALABAMA PUBLIC TELEVISION

2112

TON AWAY ZONE
PARKING PER
CITY OF MOBILE
OR BLVD. ONLY
VIOLATORS FINED OR
TOWED AT OWNER'S EXPENSE

Magnolia
2112
11th Street, Mobile
AL 36688
apt
Alabama Public Television
11th Street, Mobile, AL 36688
904-933-1234

NO PARKING
ANY TIME









ADT





Charleston Court

5
SOUTHSIDE
205.396.3008

P
PASSENGER
LOADING ZONE
←



TAYLOR & TAYLOR

2130



BERKLEY

Highland

205-254-0460

2 AM
11 PM
NO PARKING

STOP

2124



TEMPLE EMANUEL





ONE WAY

East Broadway St

TEMPLE







12th Ave S
12th Ave S

THE ORIGINAL CHICKEN SANDWICH

Chick-fil-A

Chick-fil-A

Vulcan

PARAMOUNT
Linen Rental Company

12th Ave S



211 HIGHLAND
Koyouki & Co. New Capital Partners
SPM
The following are the names of the individuals who have contributed to the development of this building.

ONE WAY



ONE WAY

Richard Arrington Jr Blvd S

2101

2101 HIGHLAND
Kriticos Co
New Capital Partners
SPM LLC
Bridgeway and Sky





F45

F45

F45

20th St S

14th Ave S

The Way to Hope
Gateway







RENTAL OFFICE

SEFOR





1805
LAW OFFICES





S







1639

UNITED RECYCLE ALABAMA





ROLLING
ASSESSMENT
FOR
HOUSING
CENTERS





1
2
8

Dr. William B. H.
Owsen

SOUTHSIDE BAPTIST CHURCH

11th Ave





9857AD5

6472AS6

No Parking



HOMewood
SUITES
by Hilton

1102
Raphael D. Davis, D.M.D.
Elizabeth C. Davis, D.D.S.

EG8-X3A
GOOD POLICE



15TH CT S

1000
1000
1000



NO PARKING
ANY TIME
→

TEXAS
LBB-4179







UNITED STATES DEPARTMENT OF THE INTERIOR
NATIONAL PARK SERVICE

NATIONAL REGISTER OF HISTORIC PLACES
EVALUATION/RETURN SHEET

Requested Action: Boundary Update

Property Name: Five Points South Historic (District Boundary Increase III)

Multiple Name:

State & County: ALABAMA, Jefferson

Date Received: 10/2/2019 Date of Pending List: 10/25/2019 Date of 16th Day: 11/12/2019 Date of 45th Day: 11/18/2019 Date of Weekly List:

Reference number: BC100004615

Nominator: SHPO

Reason For Review:

<input type="checkbox"/> Appeal	<input checked="" type="checkbox"/> PDIL	<input type="checkbox"/> Text/Data Issue
<input type="checkbox"/> SHPO Request	<input type="checkbox"/> Landscape	<input type="checkbox"/> Photo
<input type="checkbox"/> Waiver	<input type="checkbox"/> National	<input type="checkbox"/> Map/Boundary
<input type="checkbox"/> Resubmission	<input type="checkbox"/> Mobile Resource	<input checked="" type="checkbox"/> Period
<input type="checkbox"/> Other	<input type="checkbox"/> TCP	<input type="checkbox"/> Less than 50 years
	<input type="checkbox"/> CLG	

Accept Return Reject 11/18/2019 Date

Abstract/Summary NR Criteria: A & C.
Comments:

Recommendation/ Criteria Boundary Increase III accepted. Additional documentation for district #AD83002973.

Reviewer Lisa Deline

Discipline Historian

Telephone (202)354-2239

Date 11/18/19

DOCUMENTATION: see attached comments : No see attached SLR : No

If a nomination is returned to the nomination authority, the nomination is no longer under consideration by the National Park Service.



ALABAMA HISTORICAL COMMISSION

468 South Perry Street
P.O. Box 300900
Montgomery, Alabama 36130-0900
334-242-3184 / Fax: 334-240-3477

Lisa D. Jones
Executive Director
State Historic Preservation Officer

October 1, 2019

Ms. Joy Beasley
National Park Service
1849 C Street NW
Mail Stop 7228
Washington, DC 20240

Dear Ms. Beasley:

Enclosed please find the nomination and supporting documentation to be considered for expansion of the following Alabama resource in the National Register of Historic Places:

Five Points South Historic District (3rd Expansion-BI & AD)
Birmingham, Jefferson County, Alabama

Your consideration of the enclosed National Register of Historic Places nomination is appreciated.

Sincerely,

Lee Anne Wofford
Deputy State Historic Preservation Officer

LAW/nw

Enclosures