

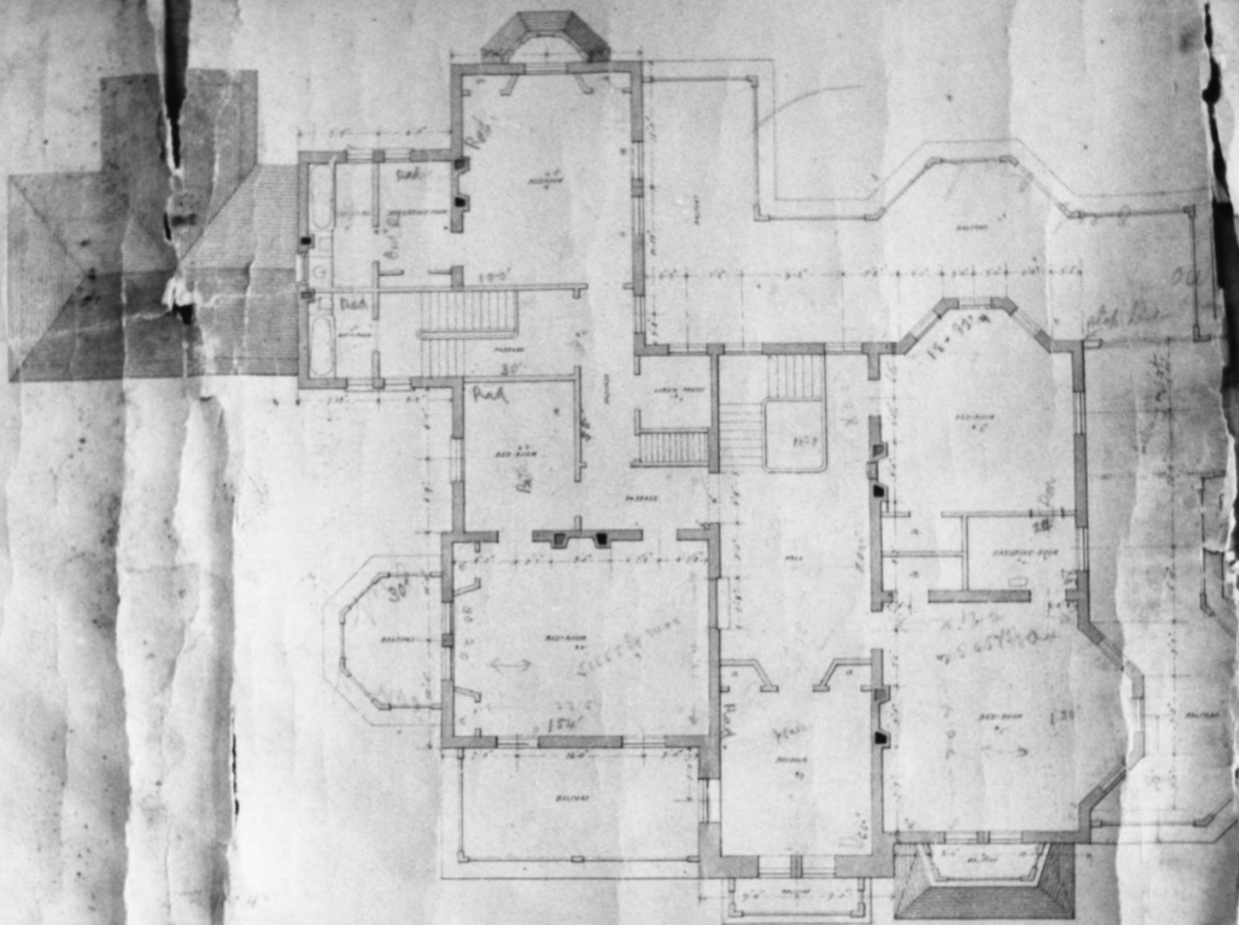




Ammadelle, Oxford, Mississippi

NPS Photo 1973

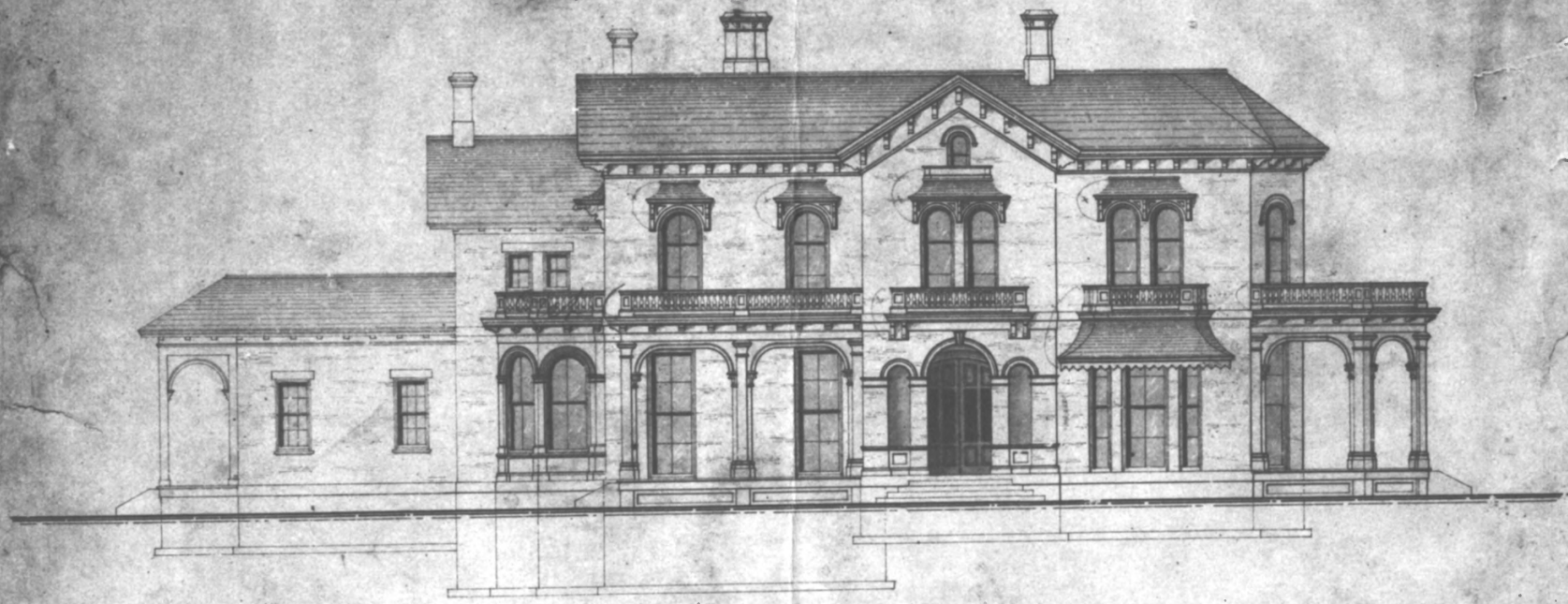




CHAMBER STORY

C. VAUX ARCHT. 1877

240



EAST-ELEVATION

AMMADELLE, Oxford, Lafayette County, Mississippi

National Historic Landmark

East (facade) elevation. Calvert Vaux, 1859.

Photostat courtesy of Mississippi Department of Archives and History, Jackson.

Original in possession of Ammadelle's owner, Mrs. John F. Tatum, Oxford, Mississippi.

16.16.74 doe