

United States Department of the Interior
National Park Service

RECEIVED

FEB 14 1994

NATIONAL REGISTER OF HISTORIC PLACES
REGISTRATION FORM

NATIONAL
REGISTER

1. Name of Property

historic name: College Street Historic District

other name/site number: N/A

2. Location

street & number: North Center, College Street, North Front, North Panola,
North Ward and West Main Streets

not for publication: N/A

city/town: Senatobia

vicinity: N/A

state: Mississippi code: MS county: Tate code: 137 zip code: 38668

3. State/Federal Agency Certification

As the designated authority under the National Historic Preservation Act of 1986, as amended, I hereby certify that this nomination _____ request for determination of eligibility meets the documentation standards for registering properties in the National Register of Historic Places and meets the procedural and professional requirements set forth in 36 CFR Part 60. In my opinion, the property meets _____ does not meet the National Register Criteria. I recommend that this property be considered significant _____ nationally _____ statewide locally. (____ See continuation sheet for additional comments.)

Kenneth A. P'Pool

February 1, 1994

Signature of certifying official

Date

Deputy State Historic Preservation Officer

State or Federal agency and bureau

In my opinion, the property _____ meets _____ does not meet the National Register criteria. (____ See continuation sheet for additional comments.)

Signature of commenting or other official

Date

State or Federal agency and bureau

=====
4. National Park Service Certification
=====

I, hereby certify that this property is:

- _____ entered in the National Register _____
- ___ See continuation sheet. _____
- _____ determined eligible for the _____
- National Register _____
- ___ See continuation sheet. _____
- _____ determined not eligible for the _____
- National Register _____
- _____ removed from the National Register _____
- _____ other (explain): _____

	Signature of Keeper	Date of Action
--	---------------------	-------------------

=====
5. Classification
=====

Ownership of Property: Private; Public-local

Category of Property: District

Number of Resources within Property:

Contributing	Noncontributing	
26	9	buildings
1	-0-	sites
-0-	-0-	structures
-0-	-0-	objects
27	9	Total

Number of contributing resources previously listed in the National Register: N/A

Name of related multiple property listing:

Historic and Architectural Resources of Senatobia, Mississippi

6. Function or Use

```

=====
Historic: DOMESTIC          Sub: Single dwelling
          DOMESTIC          Secondary structure
          EDUCATION         School
Current : DOMESTIC          Sub: Single dwelling
          DOMESTIC          Secondary structure
          EDUCATION         School
=====

```

7. Description

=====

Architectural Classification:

Colonial Revival
Craftsman
Art Moderne

Other Description: N/A

```

Materials: foundation BRICK          roof ASPHALT
           walls      BRICK          other Limestone
           WOOD              (bas-relief sculptural panels)
=====

```

8. Statement of Significance

APPLICABLE NATIONAL REGISTER CRITERIA

AREAS OF SIGNIFICANCE

A Property is associated with events that have made a significant contribution to the broad patterns of our history.

ARCHITECTURE

B Property is associated with the lives of persons significant in our past.

X C Property embodies the distinctive characteristics of a type, period, or method of construction or represents the work of a master, or possesses high artistic values, or represents a significant and distinguishable entity whose components lack individual distinction.

PERIOD OF SIGNIFICANCE

Ca. 1880 to ca. 1938

D Property has yielded, or is likely to yield, information important in prehistory or history.

SIGNIFICANT DATES

N/A

CRITERIA CONSIDERATIONS

Property is:

X A owned by a religious institution or used for religious purposes (Inventory Nos. 19 and 20)

B removed from its original location.

C a birthplace or grave

SIGNIFICANT PERSON

D a cemetery

N/A

E a reconstructed building, object, or structure

CULTURAL AFFILIATION

F a commemorative property

N/A

G less than 50 years of age or achieved significance within the past 50 years.

ARCHITECT/BUILDER

Various, Unknown

9. MAJOR BIBLIOGRAPHICAL REFERENCES

See continuation sheet.

PREVIOUS DOCUMENTATION ON FILE (NPS):

- preliminary determination of individual listing (36 CFR 67) has been requested.
- previously listed in the National Register
- previously determined eligible by the National Register
- designated a National Historic Landmark
- recorded by Historic American Buildings Survey # _____
- recorded by Historic American Engineering Record # _____

PRIMARY LOCATION OF ADDITIONAL DATA:

- | | |
|--|------------------|
| <input checked="" type="checkbox"/> State historic preservation office | Local government |
| <input type="checkbox"/> Other state agency | University |
| <input type="checkbox"/> Federal agency | Other |

-- Specify Repository: Mississippi Department of Archives and History

=====

10. Geographical Data

=====

Acreage of Property: Approximately thirteen acres

UTM References: Zone Easting Northing Zone Easting Northing
Senatobia Quadrangle
A 16 227820 3834880 B 16 228210 3834 870
C 16 228210 3834570 D 16 22 7800 3834460

See continuation sheet.

Verbal Boundary Description: See continuation sheet.

Boundary Justification: See continuation sheet.

=====

11. Form Prepared By

=====

Name/Title: John Linn Hopkins, Preservation Consultant

Organization: N/A

Date: June 1, 1993

Street & Number: 974 Philadelphia Street

Telephone: (901) 278-5186

City or Town: Memphis

State: TN ZIP: 38104

=====

PROPERTY OWNER

=====

Name: Various

Street & Number: N/A

Telephone: N/A

City/Town: N/A

State: N/A

Zip Code: N/A

United States Department of the Interior
National Park Service

RECEIVED

FEB 14 1994

NATIONAL REGISTER OF HISTORIC PLACES
CONTINUATION SHEET

Section number 7 Page # 1 College Street Historic District
Senatobia, Tate County, MS NATIONAL REGISTER

NARRATIVE DESCRIPTION

The College Street Historic District is a collection of twenty-three principal buildings located along or adjacent to College Street in the city of Senatobia, Tate County, Mississippi. Apart from addresses on College Street are buildings nearby on North Front Street, North Ward Street, North Center Street, North Panola Street, and West Main Street. All of these contiguous properties combine to give the College Street Historic District its unique historical character.

The College Street Historic District is located to the north and west of the core of Senatobia's central business district (See Downtown Senatobia Historic District, NR pending), and lies largely to the east of Panola Street (U.S. Highway 51; see Panola Street, North, Historic District, NR pending). College Street, its principal street, runs east/west through the district to connect with Panola Street on the west, and the Illinois Central Gulf Railroad and North Park Street to the east (See North Park Street Historic District, NR pending).

The district occupies a rather flat tabletop of land, gently rising from its low point on the east to its high point at Panola Street. A low draw separates portions of the district from the downtown area to the south; this feature was created by a small creek, which was piped and buried beneath the existing grade in the ca. 1930s. Most residences facing College Street have sites at grade with the street level, though there are buildings built on low land terraces at the western end of College Street, and along North Ward Street and North Center Street, as the grade drops off towards the draw to the south.

The district is largely residential in character, though two of its key features are the Senatobia High School Auditorium building (303 College Street (a), built 1938), and the Senatobia Presbyterian Church (431 West Main Street, 1927). Another building, commercial in character though public in use, is the Senatobia Public Works building (105 College Street, ca. 1925-30), originally constructed as an agricultural seed and feed store building.

Architectural styles found in the district include a wide range of the influences to be found in the historic areas of Senatobia as a whole. Examples of Italianate, Queen Anne, Colonial Revival, Craftsman and Minimalist Traditional all contribute to the diversity of the district's character. House types found here are equally diverse, and include saddlebags, center hall plans, composite cottages, Capes, pyramidal cottages, bungalows, four-square houses and Homestead houses.

The Art Moderne styling of the Senatobia High School Auditorium and the Gothic Revival styling of the Senatobia Presbyterian Church are notable in their own right as finely-executed architectural statements.

United States Department of the Interior
National Park Service

NATIONAL REGISTER OF HISTORIC PLACES
CONTINUATION SHEET

Section number 7 Page # 2 College Street Historic District
Senatobia, Tate County, MS
=====

Unfortunately, the scope of this project did not allow the opportunity to conduct intensive research to identify the architects responsible for these fine buildings.

An inventory of the buildings contained in the College Street Historic District is presented below. The designation of "C" is made for buildings which maintain their architectural integrity and contribute to the character of the district. "NC" is employed to designate properties which have been so altered as to have lost their historic integrity, or which are too new to reflect the period of significance for the district. The notation of "NC*" is made for buildings which have been altered, but have alterations which may be reversed in a careful rehabilitation project to regain historic integrity.

Apart from the structures located in the district, there are elements of character provided by the streetscape which establish the district's historic setting, as evolved over time. The pattern of streets, lot divisions, front yard, and side yard setbacks all establish the matrix of rhythm of the streetscape which contains its historic buildings; its pattern of historic street trees, sidewalks, lawns and private plantings serve as evidence of the district's continuity as a place for living. All of these elements contribute to the character of the district, but are not presented in the inventory of buildings which follows. Never-the-less, these characteristics have been counted in the overall number of resources as one contributing site.

The buildings inventoried in the district are:

- 001 C 132 North Center Street
One-story, three-bay, load-bearing brick masonry center hall cottage with Italianate influence, built ca. 1880-85. Side gable roof with plain projecting eaves, covered with asphalt shingles. Windows are 6/6 DHSL, set within segmental reveals. Partial-width, hip-roofed porch supported by boxed piers. Entrance set in segmental-arched reveal with a single-light cottage door topped by a divided light transom.
- 002 C 105 College Street
One-story, six-bay, load-bearing brick masonry commercial building with Italianate influence, built ca. 1925-30. Flat roof behind center step parapet, topped with a tile coping. Parapet contains a corbeled sign panel. Windows are 1/1 DHSL, one set in pairs, some set within segmental-arched reveals. One entrance set within segmental reveal, with replacement multi-light door; another set within altered rectangular reveal with replacement multi-light door; Center roll-up equipment door.

United States Department of the Interior
National Park Service

NATIONAL REGISTER OF HISTORIC PLACES
CONTINUATION SHEET

Section number 7 Page # 3 College Street Historic District
Senatobia, Tate County, MS
=====

- 003 C 205 College Street
One-story, four-bay, frame pyramidal cottage with Craftsman influence, built ca. 1895-1900 and altered to bungalow ca. 1907-15. Pyramidal hip roof with boxed cornice and exposed, rounded rafter tails, covered with asphalt shingles. Exterior walls covered with vinyl siding. Windows are 9/1 DHSL. Partial-width, hip-roofed porch supported by cast stone piers with a cast stone balustrade. Entrance contains a Craftsman multi-light door.

Garage, ca. 1907-15. One-story, one-bay, frame, hip-roof, weatherboard siding, overhead door; later attached to house by breezeway. (C)
- 004 C 302 College Street
One-story, three-bay, frame saddlebag with Queen Anne influence, built ca. 1890-95 oriented to N.Center St., reoriented to College St. with side and rear additions ca. 1935-40 with Minimalist Traditional influence. Gable and hip roofs with boxed cornice, covered with asphalt shingles. Exterior walls have vinyl siding. Partial-width original hip-roofed porch supported by turned posts; addition porch gable-front with boxed piers. Windows are 6/1 and 6/6 DHSL. Entrance has four-light door.

Garage, ca. 1935-40. One-story, one-bay, frame, gable roof, board and batten siding, overhead doors. (C)
- 005 C 303 College Street (a) Senatobia City School Auditorium
One and one-half story three-bay auditorium with side one-story, five bay wings, reinforced concrete with brick and stone veneer, built 1938 with Art Moderne influence. Building has flat roofs behind parapet walls topped with metal coping. Center block has engaged pylon piers flanking recessed entrance bay, each bay separated by engaged pier-like pilasters. Bays decorated with allegorical bas-relief sculptures and sun dial above glass block lights, above entrances of wood-frame double doors.
- 006 NC 303 College Street (b) Senatobia Middle School
One-story, three-bay, brick-veneered school building with Art Moderne influence, built ca. 1959. Gable-front roof behind raking parapet, capped with a cast concrete band coping. Windows are multi-light, metal-frame casements. Entrance set within center recessed vestibule, containing single-light, metal-frame double doors.

Classroom Annex, ca. 1965. One-story, four-bay, brick veneer, flat roof. (NC)

United States Department of the Interior
National Park Service

NATIONAL REGISTER OF HISTORIC PLACES
CONTINUATION SHEET

Section number 7 Page # 4 College Street Historic District
Senatobia, Tate County, MS

=====

007 C 401 College Street
Two-story, three-bay, frame, modified four-square with Colonial Revival influence, built ca. 1910-15. Pyramidal hip roof with boxed cornice and frieze, covered with asphalt shingles. Exterior walls have weatherboard siding. Windows are Craftsman multi-light/1 DHSL. Full-width porch with flat roof and full architrave, supported by columns with Tuscan shafts and Doric capitals. Porte-cochere to side. Entrance has a six-panel door surrounded by full multi-light transom and multi-light sidelights.

Garage, ca. 1920-25. One-story, one-bay, load-bearing brick, gable roof. (C)

008 C 402 College Street
One-story, three-bay, brick veneered bungalow with Craftsman influence, built ca. 1915-20. Side gable roof with jerkinheads, exposed shaped rafter tails and knee brace brackets, covered with asphalt shingles. Windows are 9/1 DHSL, in triplets. L-shaped cutaway porch partially enclosed, supported by brick piers with Ionic capitals, and a closed brick balustrade. Gable-front dormer over entrance. Entrance contains a single-light door topped with segmental transom and flanked with sidelights.

009 C 403 College Street E.E. Moore House
One-story, four-bay, brick veneered composite cottage with Craftsman influence, built ca. 1910-15. Complex hip and gable roof with enclosed gable end, dormer, and boxed cornice, covered with asphalt shingles. Dormer contains two nine-light casement windows. Windows are 1/1 DHSL, some in triplets. Partial-width, hip-roofed, L-shaped porch partially enclosed, supported by brick piers with a closed brick balustrade. Entrance contains a single-light wood-frame door.

Garage, ca. 1910-15. One-story, two-bay, frame, hip roof, weatherboard siding, overhead doors. (C)

010 C 404 College Street
One and one-half story, three-bay, brick veneered modified composite cottage with Colonial Revival influence, built ca. 1935-40. Complex gable roof with boxed cornice, frieze and cornice returns, covered with asphalt shingles. Windows are 6/6 DHSL. Partial-width, shed-roofed porch supported by paired columns with Tuscan shafts and Doric capitals. Entrance contains a four-light, two-panel door.

United States Department of the Interior
National Park Service

NATIONAL REGISTER OF HISTORIC PLACES
CONTINUATION SHEET

Section number 7 Page # 5 College Street Historic District
Senatobia, Tate County, MS

=====

- 011 C 406 College Street
One-story, five-bay, frame composite cottage with Colonial Revival influence, built ca. 1910-15. Complex hip and gable roof with enclosed gable end, boxed cornice and frieze, covered with asphalt shingles. Exterior wall surfaces covered with vinyl siding. Windows are 1/1 DHSL, some in triplets. Partial-width, hip-roofed L-shaped porch supported by wrought iron replacement posts. Entrance contains a single-light door topped with a full transom and flanked by sidelights.

Shed, ca. 1930-35. One-story, one-bay, frame, gable roof, exterior plywood siding. (C)
- 012 C 408 College Street
One-story, four-bay, frame composite cottage with Colonial Revival influence, built ca. 1910-15. Complex hip and gable roof with enclosed gable end and boxed cornice, covered with asphalt shingles. Exterior wall surfaces covered with weatherboard siding. Windows are 1/1 DHSL. Partial-width, hip-roofed L-shaped porch supported by columns with Tuscan shafts and Doric capitals, on raised brick bases. Entrance contains a single-light door topped with a single-light transom.

Garage, ca. 1925-30. One-story, one-bay, load-bearing brick, gable roof with jerkinhead, overhead doors. (C)
- 013 C 409 College Street
One-story, five-bay, frame, modified composite cottage with Craftsman and Colonial Revival influences, built ca. 1910-15. Complex hip and gable roof with enclosed gable end, exposed shaped rafter tails, covered with asphalt shingles. Gable-roofed dormer contains three square-burst lights. Exterior walls have weatherboard siding. Windows are 9/1 DHSL. Hip-roofed, L-shaped porch supported by paired Doric columns on raised cast stone bases, open cast stone balustrade. Entrance has a multi-light door.
- 014 NC 410 College Street
One-story, five-bay, brick veneered ranch house with Colonial Revival influence, built ca. 1960-65. Side gable roof with boxed cornice, covered with asphalt shingles. Windows are 1/1 DHSL. Partial-width, shed-roofed porch supported by columns with Tuscan shafts and Doric capitals. Cutaway carport located to one side. Entrance contains a six-panel door.

United States Department of the Interior
National Park Service

NATIONAL REGISTER OF HISTORIC PLACES
CONTINUATION SHEET

Section number 7 Page # 6 College Street Historic District
Senatobia, Tate County, MS

=====

- 015 C 411 College Street
One-story, four-bay, brick veneered bungalow with Craftsman influence, built ca. 1915-20. Complex gable roofs with jerkinheads and exposed rafter tails, covered with asphalt shingles. Windows are 1/1 DHSL, in singles, pairs and triplets. Full-width, partially-enclosed, flat and hip skirt porch with porte-cochere supported by brick piers, with a closed brick balustrade. Entrance contains a multi-light door.
- 016 C 412 College Street
Two-story, four-bay, frame Homestead house with Colonial Revival influences, built ca. 1900-05. Complex gambrel and gable roof, closed gable ends and boxed cornice with frieze, covered with asphalt shingles. Exterior walls have vinyl siding. Windows are 1/1, Queen Anne multi-light/1 DHSL; and one semi-circular arched triptych. Partial-width, hip roof with pediment L-shaped porch, supported by columns with Ionic capitals on brick bases. Entrance has a single-light door.

Shed, ca. 1930-35. One-story, two-bay, frame, gable roof, exterior plywood siding, 2/2 DHSL, solid replacement door.
(C)
- 017 C 138 North Front Street
Two-story, three-bay, frame Homestead house with Queen Anne influence, built ca. 1897-1902. Complex gable roofs with boxed cornice, covered with standing seam metal roofing. Exterior walls covered with aluminum siding. Windows are 4/4 DHSL. Full-width, hip-roofed porch, partially enclosed, supported by turned posts on a closed weatherboard balustrade. Entrance contains a single-light cottage door, topped with a divided transom and flanked by sidelights.
- 018 C 427 West Main Street
One-story, three-bay, brick veneered bungalow with Craftsman influence, built ca. 1915-20. Gable-front roof with exposed rafter tails and knee-brace brackets, covered with asphalt shingles. Windows are 6/1 DHSL, some in pairs. Partial-width, gable-front porch and side-gable porte-cochere supported by battered brick piers with a closed brick balustrade. Entrance has a multi-light door.
- 019 NC 429 West Main Street Parsonage, Presbyterian Church
One and one-half story, four-bay, brick-veneered, front

United States Department of the Interior
National Park Service

NATIONAL REGISTER OF HISTORIC PLACES
CONTINUATION SHEET

Section number 7 Page # 7 College Street Historic District
Senatobia, Tate County, MS

=====

429 West Main Street, continued:

L-plan cottage with Gothic Revival influence, built 1952. Gable roofs with flush cornice, covered with asphalt shingles. Windows are 8:8 metal frame casements, one grouped as a triplet, with flat soldier course lintels. One-bay, side shed-roofed porch supported by wrought iron replacement posts. Entrance is a five-light, four-panel door.

020 C 431 West Main Street Presbyterian Church of Senatobia
One-story, three-bay, brick veneered church building with Gothic Revival influence, built 1927. Gable-front roof with flush cornice, covered with asphalt shingles. Side walls supported by engaged pier buttresses. Front facade has lancet windows set in rectangular reveals; three louvered lancet vents are featured in the upper gable end. Side windows are Gothic-arched, with stone surrounds. Entrance contained in an equilateral-arched reveal of ashlar, containing Gothic-paneled double-doors.

a. Fellowship Hall, ca. 1975-80. One-story, three-bay, brick veneered, gable roof, single-light metal-frame windows, six-panel doors. (NC)

021 NC 113 North Panola Street
One-story, four-bay, frame, former duplex saddlebag with Colonial Revival influence, built ca. 1900-05. Side gable roof with boxed cornice, covered with asphalt shingles. Exterior walls have aluminum siding. Windows are 6/6 DHSL replacements. Partial-width porch covered with shed roof supported by wrought iron replacement posts. Entrances contain multi-light doors.

Back House, ca. 1985-90. One-story, two-bay, frame, gable roof, weatherboard siding, slab doors. (NC)

022 NC* 115 North Panola Street
One-story, four-bay, frame, front L-plan cottage with Queen Anne influence, built ca. 1900-05 and altered with brick veneer ca. 1975-80. Complex gable roof with boxed cornice, covered with asphalt shingles. Front facade covered with brick veneer; side and rear facades covered with vinyl siding. Windows are 4/4 DHSL. Partial-width porch covered with flat roof supported by wrought iron replacement posts. Entrance contains a single-light Queen Anne door.

United States Department of the Interior
National Park Service

NATIONAL REGISTER OF HISTORIC PLACES
CONTINUATION SHEET

Section number 7 Page # 8 College Street Historic District
Senatobia, Tate County, MS

=====

115 North Panola Street, continued:

Garage, c. 1990. . One-story, one-bay, frame, gable roof,
metal siding, hinged double-doors. (NC)

023 C 125 North Ward Street
One-story, four-bay, frame, modified Cape with Minimalist
Traditional influence, built ca. 1930-35. Side gable roof
with boxed cornice, covered with asphalt shingles.
Exterior walls have vinyl siding. Windows are 3/1 DHSL.
partial-width, cutaway corner porch supported by boxed
pier with a block spindle balustrade. Entrance covered by
gabled hood supported by knee brace brackets. Entrance
contains a three-light, one panel door.

Garage, ca. 1930-35. One-story, one-bay, frame, gable
roof, weatherboard siding. (C)

United States Department of the Interior
National Park Service

NATIONAL REGISTER OF HISTORIC PLACES
CONTINUATION SHEET

Section number 8 Page # 9 College Street Historic District
Senatobia, Tate County, Mississippi
=====

NARRATIVE STATEMENT OF SIGNIFICANCE

The College Street Historic District is being nominated under criterion C in the area of architecture in reflection of the significance of its diverse assemblage of late-nineteenth and early twentieth century building types and architectural influences. These structures-- residential, public and institutional in nature-- combine to form an important contribution to the character of setting, time and place that reflect a number of significant periods of development in the history of Senatobia. The period of significance begins with the date of the oldest structure in the district, and concludes with the date of the latest structure that reflects the historical character of the district. The structures which remain form an important contribution to the qualities that define Senatobia as a unique place.

The development pattern of the College Street Historic District is not entirely clear, in part due to the fact that Sanborn maps for Senatobia did not extend to include College Street until 1902. However, the Senatobia Female College (later Blackbourne College for Girls) is noted on an inset in the Sanborn map series of 1886. The college-- obviously the namesake for the street-- was located at the intersection of North Ward and College Street, in approximately the same site occupied today by the Senatobia High School Auditorium at 303 College Street. It appears that this site has been continuously occupied by a school building for more than a century.

The Senatobia High School Auditorium building is an outstanding example of the Art Moderne style; it was constructed in 1938, apparently as a project of the Works Progress Administration (WPA). Its stylized bas-relief sculptures, facade sun dial, lighting fixtures and other detailings all reveal the hand of an extremely talented designer, whose identity is unfortunately unknown. Taken as a whole, this structure is among the finest Art Moderne designs surviving in the region.

The residential development of College Street was likely begun within a decade of the establishment of the college, though few of the original structures built here at that time are those in evidence today. The lot pattern of the street suggests that many original lots have been subdivided over time-- given the evidence of the structures present, it would appear that many of these subdivisions occurred right after the turn of the twentieth century. Most of the buildings in evidence today were built between ca. 1910 and 1920.

The College Street Historic District reflects a number of the characteristic architectural trends that define the very identity of Senatobia throughout its period of significance. The presence of buildings

United States Department of the Interior
National Park Service

NATIONAL REGISTER OF HISTORIC PLACES
CONTINUATION SHEET

Section number 8 Page # 10 College Street Historic District
Senatobia, Tate County, Mississippi

=====

like the Senatobia High School Auditorium and the Senatobia Presbyterian Church add additional importance and dignity to this historic area-- reflective of trends that shaped the community and possessing qualities which add unique character to the district and the community as a whole.

United States Department of the Interior
National Park Service

NATIONAL REGISTER OF HISTORIC PLACES
CONTINUATION SHEET

Section number 9 Page # 11 College Street Historic District
Senatobia, Tate County, Mississippi
=====

9. MAJOR BIBLIOGRAPHIC SOURCES

- Carpenter, Howard, editor, The History of Tate County. (Senatobia, MS: B/C Printing, 1975)
- Sanborn Map Publishing Company, Sanborn Fire Insurance Maps of Senatobia, Mississippi; map series 1886, 1892, 1897, 1902, 1907, 1915, 1925, 1936-42.

United States Department of the Interior
National Park Service

NATIONAL REGISTER OF HISTORIC PLACES
CONTINUATION SHEET

Section number 10 Page # 12 College Street Historic District
Senatobia, Tate County, Mississippi
=====

10. GEOGRAPHICAL DATA

Verbal Boundary Description

The property in nomination is an irregularly-shaped area principally centered along College Street between the Illinois Central Gulf Railroad and North Panola Street in Senatobia, Mississippi, as delineated on the attached Tate County Property Tax maps 99B and 99G.

Boundary Justification

The property in nomination includes a group of contiguous historic and non-historic resources that, collectively, best represent the historical and architectural development of College Street and its environs during the period of significance.

United States Department of the Interior
National Park Service

NATIONAL REGISTER OF HISTORIC PLACES
CONTINUATION SHEET

Section number Photos Page # 13 College Street Historic District
Senatobia, Tate County, Mississippi
=====

PHOTO LIST

COLLEGE STREET HISTORIC DISTRICT

Senatobia, Tate County, Mississippi

Photographer: John Linn Hopkins

Date: July, 1993

Negatives: Mississippi Department of Archives and History
(MDAH Survey Photo Files are cited as appropriate)

Photo 1 of 7

View of the south side of College Street, looking generally west from
404 College (left) to 412 College Street (right).

Photo 2 of 7

View of the front (south) facade of the Senatobia High School
Auditorium, looking north.

Photo 3 of 7

View of 401 College Street, looking northwest.

Photo 4 of 7

View of 409 College Street (right) and 411 College Street (left).
looking generally northwest.

Photo 5 of 7

View 302 College Street (original facade facing Center Street) at
right, and 132 North Center Street at left, looking southwest.

Photo 6 of 7 (MDAH 2684:28a)

View of 412 College Street, facing generally southeast.

Photo 7 of 7 (MDAH 2685:14)

View of the front (south) facade of the Senatobia Presbyterian Church,
431 West Main Street, looking generally north.

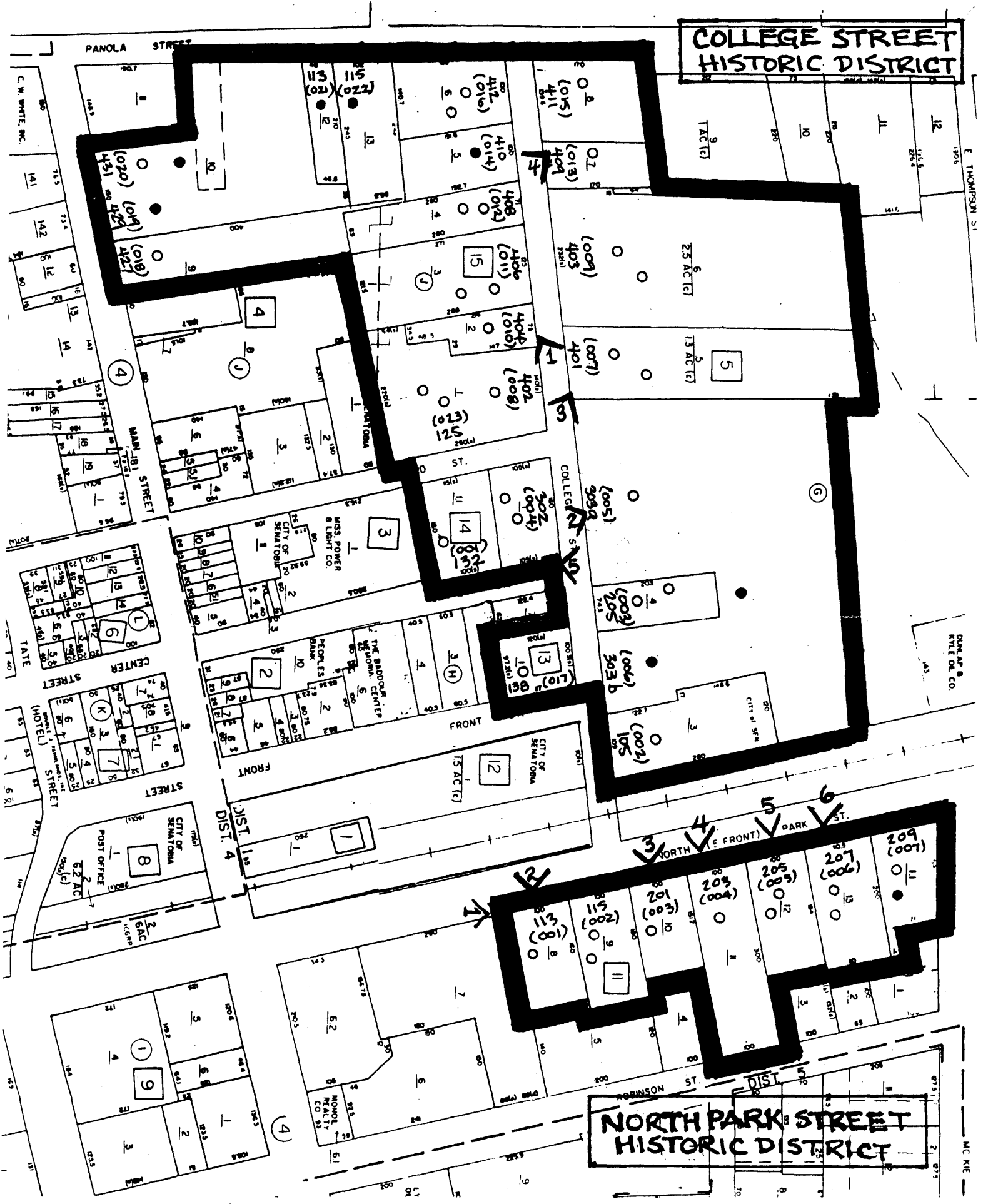


PHOTO MAP
 COLLEGE STREET HISTORIC DISTRICT (ABOVE)
 NORTH PARK STREET HISTORIC DISTRICT (BELOW)
 SENATOBIA, TATE COUNTY, MISSISSIPPI

SCALE: 1" = 200'

BOUNDARY: ████████████████████

CONTRIBUTING STRUCTURE: ○
 NON-CONTRIBUTING STRUCTURE: ●

