



1. Lembeck-Betz Brewery Complex
(Bldgs. I-IV) 164-190 Ninth St.
Jersey City, Hudson Co., N.J.
1/11/83 Joseph C. Brooks
J.C. Div. of U.R.D.

NW corner of Ninth and Henderson
(Marin Blvd.) looking NW on Ninth
1 of 20



2. Lembeck-Betz Brewery Complex
(Bldgs. I-III) 164-182 Ninth St.
Jersey City, Hudson Co., N.J.
1/11/83 Joseph C. Brooks
J.C. Div. of U.R.D.

N side of Ninth St. between
Henderson (Marin Blvd.) and
Grove (Manila Av) looking
NE. on Ninth 2 of 20



3. Lembeck-Betz Brewery Complex
(Bldg. I) 172-178 Ninth St.
Jersey City, Hudson Co., N.J.
1/11/83 Joseph C. Brooks
J.C. Div. of U.R.D.

N side of Ninth St. between
Henderson (Marin Blvd.) and
Grove (Manila Av) looking
N on Ninth 3 of 20



4. Lembeck-Betz Brewery Complex
(Bldg. II) 180-182 Ninth Street
1/11/83 Joseph C. Brooks
J.C. Div. of U.R.D.
Jersey City, Hudson Co., N.J.

N side of Ninth Street between
Henderson (Marin Blvd) and Grove
(Manila Av) looking NE on Ninth
4 of 20



5. Lembeck-Betz Brewery Complex
(Bldg. III) 164-170 Ninth Street
1/11/83 Joseph C. Brooks
J.C. Div. of U.R.D.
Jersey City, Hudson Co., N.J.

NW corner of Ninth St. and
Henderson (Marin Blvd) looking
NW from Henderson



R

Ronny

PAPO
L'Tony

Albe

Julio
78

6. Lembeck-Betz Brewery Complex
(Bldg. IV) 186-190 Ninth Street
1/11/83 Joseph C. Brooks
J.C. Div. of U.R.D.

Jersey City, Hudson Co., N.J.

N side of Ninth Street between
Henderson (Marin Blvd) and Grove
(Manila Av) looking N on Ninth



7. Lembeck-Betz Brewery Complex
(Bldgs. III & V)

511-519 Henderson (Marin Blvd)

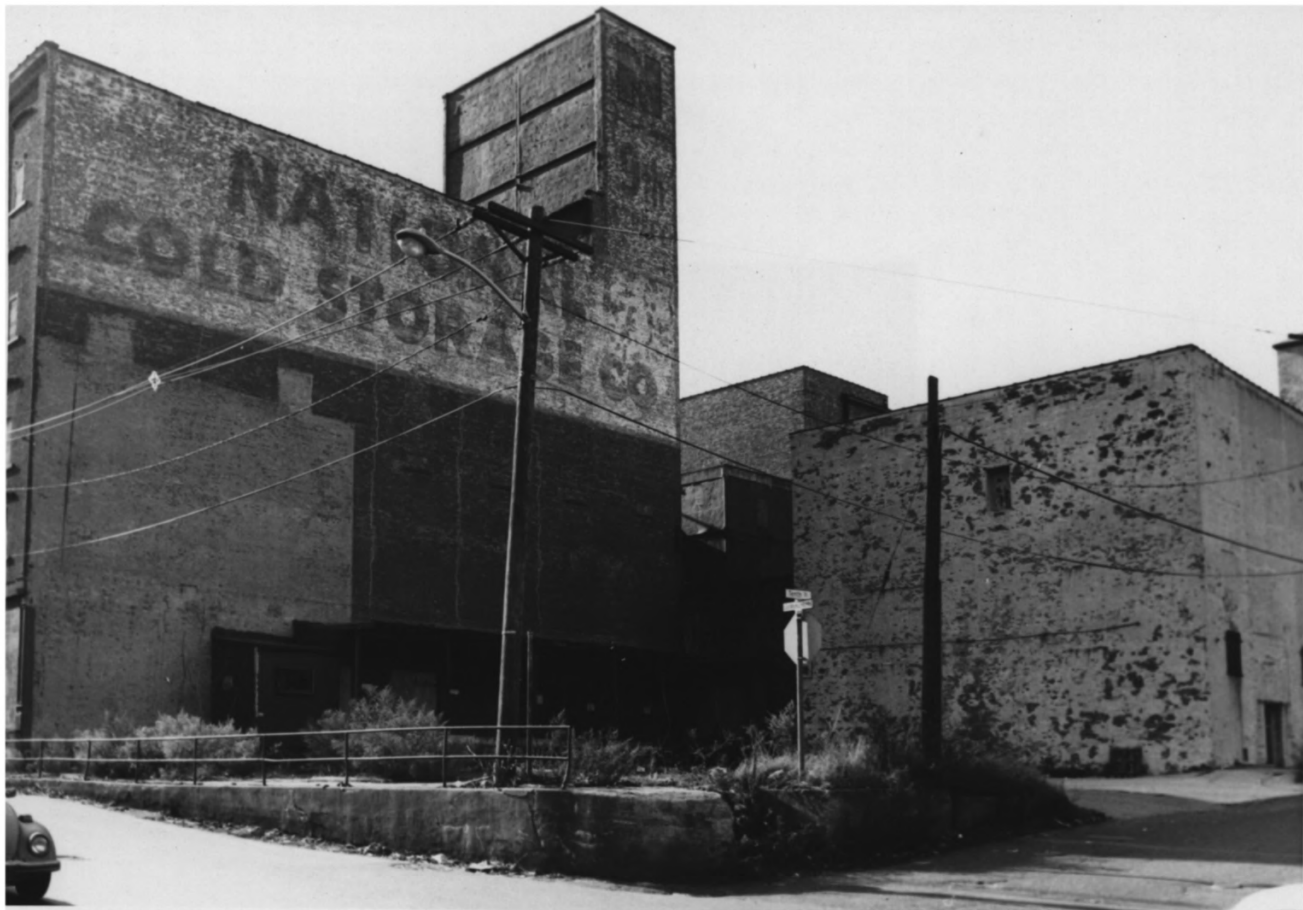
Jersey City, Hudson Co., N.J.

1/11/83 Joseph C. Brooks

J.C. Div. of U.R.D.

W side of Henderson (Marin Blvd.)
between Ninth and Tenth Sts.

looking N on Henderson 7 of 20



8. Lembeck-Betz Brewery Complex
(Parking) 521-525 Henderson St.
(Marin Blvd), Jersey City
Hudson Co., N.J.

1/11/83 Joseph C. Brooks

J.C. Div. of U.R.D.

SW corner of Henderson
(Marin Blvd) and Tenth St.

looking SW from Henderson 8 of



9. Lembeck-Betz Brewery Complex
(Bldg. VI) 165-173 Tenth St.
Jersey City, Hudson Co., N.J.
1/11/83 Joseph C. Brooks
J.C. Div. of U.R.D.

S side of Tenth between
Henderson (Marin Blvd) and
Grove (Manila Av) looking
SW on Tenth 9 of 20



10. Lembeck-Betz Brewery Complex
(Intersection and overpass)
NW corner of Tenth and Henderson
(Marin Blvd), Jersey City,
Hudson Co., N.J.

1/11/83 Joseph C. Brooks

J.C. Div. of U.R.D.

looking NW up N side of Tenth St.

10 of 20



11. Lembeck-Betz Brewery Complex
(Bldg VII)B & J Mill,
530 Grove (Manila Av)

Jersey City, Hudson Co., N.J.

1/11/83 Joseph C. Brooks

J.C. Div. of U.R.D.

NE corner of Henderson and
Tenth looking NE on Tenth St.

11 of 20

B & J MILLING CO.

FEED **ARCADY** FEEDS

ONE WAY



12. Lembeck-Betz Brewery Complex
(Bldg. VII) 530 Grove (Manila Av)
Jersey City, Hudson Co., N.J.
1/11/83 Joseph C. Brooks
J.C. Div. of U.R.D.

NE corner of Grove (Manila Av)
and Tenth St., looking to E side
of Grove 12 of 20



13. Lembeck-Betz Brewery Complex
(Bldgs VIII) 516-528 Grove
(Manila Av), Jersey City,
Hudson Co., N.J.
J.C. Div. of U.R.D.

E side of Grove (Manila Av)
between Ninth and Tenth Sts.
looking NE from Ninth.13 of 20



14. Lembeck-Betz Brewery Complex
(Bldgs VIII) 521-517 Grove
(Manila Av), Jersey City,
Hudson Co., N.J.
J.C. Div. of U.R.D.

W side of Grove (Manila Av)
between Ninth and Tenth Sts.
looking SW from Tenth 14 of 20



15. Lembeck-Betz Brewery Complex
(Bldgs VIII) 513-521 Grove St.
(Manila Av), Jersey City,
Hudson Co., N.J.

1/11/83 Joseph C. Brooks

J.C. Div. of U.R.D.

W side of Grove (NW corner of
Ninth) looking to the NW on
Grove (Manila Av) 15 of 20



16. Lembeck-Betz Brewery Complex
(Interior of Bldg I) 172 Ninth
Jersey City, Hudson Co., N.J.
1/11/83 Joseph C. Brooks
J.C. Div. of U.R.D.

looking at ceiling of front room
from the NE corner toward the SW
(front room of 172 Ninth) 16 of
20



17. Lembeck-Betz Brewery Complex
(Interior of Bldg I) 172 Ninth
Jersey City, Hudson Co., N.J.
1/11/83 Joseph C. Brooks
J.C. Div. of U.R.D.

looking toward the NW from the
SE (back room of 172-176 Ninth)
17 of 20



18. Lembeck-Betz Brewery Complex
(Interior of Bldg II)

180-182 Ninth St.

Jersey City, Hudson Co., N.J.

1/11/83 Joseph C. Brooks

J.C. Div. of U.R.D.

rear wing, E wall (entry
between Bldg II and I) looking
from W to E 18 of 20
(ground story)



19. Lembeck-Betz Brewery Complex
(Interior of Bldg II)

180-182 Ninth St.

Jersey City, Hudson Co., N.J.

1/11/83 Joseph C. Brooks

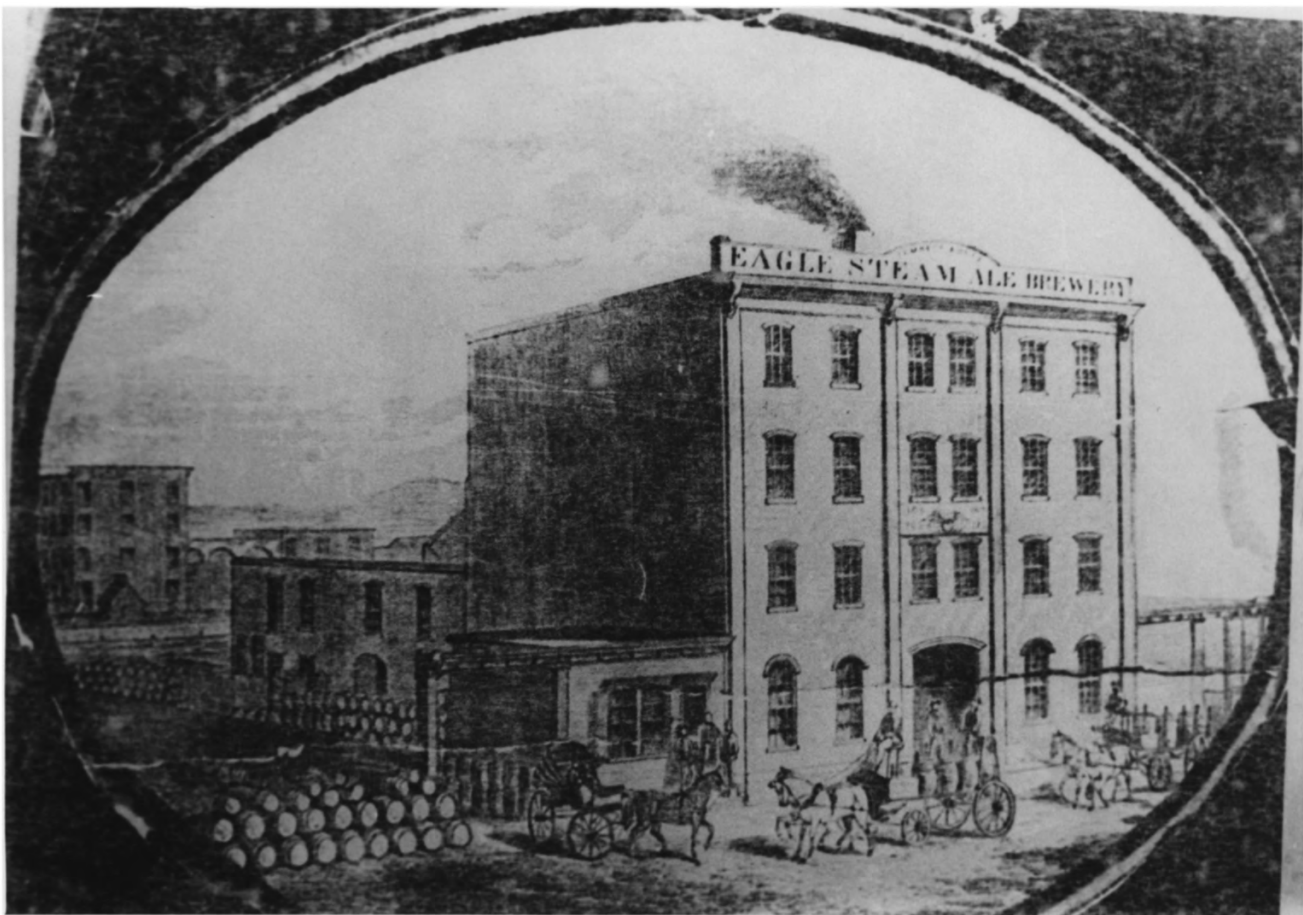
J.C. Div. of U.R.D.

front room, SW corner looking
from NE (ground story) 19 of 20



20. Lembeck-Betz Brewery Complex
(Interior of Bldg V)
519 Henderson (Marin Blvd)
Jersey City, Hudson Co., N.J.
1/11/83 Joseph C. Brooks

J.C. Div. of U.R.D.
front room (ground story) NE
corner looking from SW corner
20 of 20



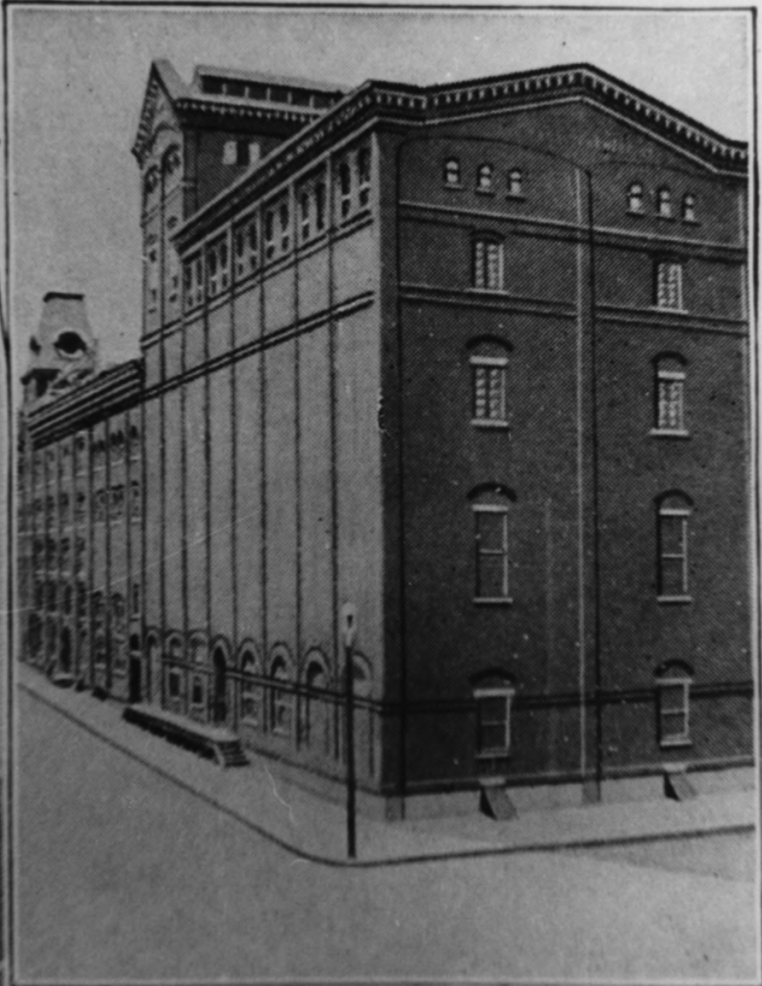
Historic Photograph 1.

About 1870 (Print of unknown source, courtesy of the New Jersey Room, Free Public Library, Jersey City)

176-178 Ninth Street

Jersey City, Hudson Co., N.J.

d of the river
ayonne and an equal number
le macadam roads in Bay-



Historic Photograph 2.

From Jersey City of Today, 1909
p. 93; NW corner of Henderson St.
and Ninth St. - Lembeck-Betz
Brewery, Jersey City, Hudson Co.



LEMBECK & BETZ EAGLE BREWING CO.

Historic Photograph 3.

From Jersey City of Today, 1909
p. 89; north side of Ninth St.
between Henderson and Grove Sts.
Lembeck-Betz Brewery

Jersey City, Hudson Co., N.J.