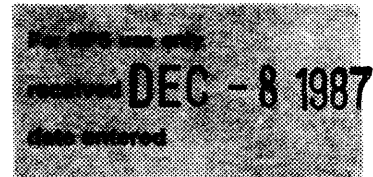


United States Department of the Interior
National Park Service

**National Register of Historic Places
Inventory—Nomination Form**



Continuation sheet Grenada Multiple
Resource Area

Item number 7

Page 7

Property: Lee-DuBard House

Classification: Building

Owner: Edwin and Martha Cofer, 317 Third Street, Grenada, MS 38901

Location: 317 Third Street, Grenada, Mississippi.

Contributing Buildings: 1 (1 Contributing Structure - Shed)

Non-Contributing Buildings: 0

Description:

The Lee-Dubard House was constructed in 1880 and is Grenada's best example of the towered Italianate style. The two-story frame house features a prominent tower and concave mansard roof on the main facade. When the building was first constructed it had a one-story porch on the main facade with milled posts and vergeboard brackets. This porch was replaced ca. 1910 with a two-story Colonial Revival design porch with square Doric columns and a railing with square spindles. Most other decorative details are original and include two-over-two sash windows, weatherboard siding and a brick foundation.

In addition to the mansard tower the main facade also features a rectangular bay window with a projecting cornice and eave brackets. The main entrance has original double doors of frame and glass with a two-light transom. On the second story is also a double door with sidelights added ca. 1910 when the porch was added. Windows have decorative frame surrounds on all facades. At the roofline are gable returns, eave brackets and decorative vent windows. With the exception of the mansard tower the roofline is of gable design with prominent brick chimneys.

At the rear of the house on the west elevation is a one-story open frame garage added ca. 1970. A ca. 1910 one-story addition was also added on the rear or south facade. The interior of the house has not been greatly altered and features its original staircase, woodwork and mantles. At the rear of the house is a ca. 1920 frame shed with shiplap siding and exposed eave rafters. This structure is contributing within the property boundary.

Period of Significance: 1880 - ca. 1910.

Area of Significance: Architecture

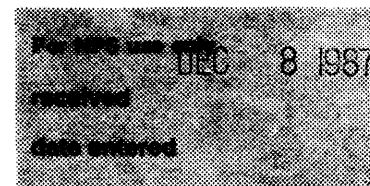
Architect/Builder: L.C. Lee, builder, (attributed).

Statement of Significance:

The Lee-Dubard House was built in 1880 and is the only example of the towered Italianate style remaining in Grenada. The house was built in 1880 by L.C. Lee,

**United States Department of the Interior
National Park Service**

**National Register of Historic Places
Inventory—Nomination Form**



Continuation sheet Grenada Multiple
Resource Area

Item number 7

Page 8

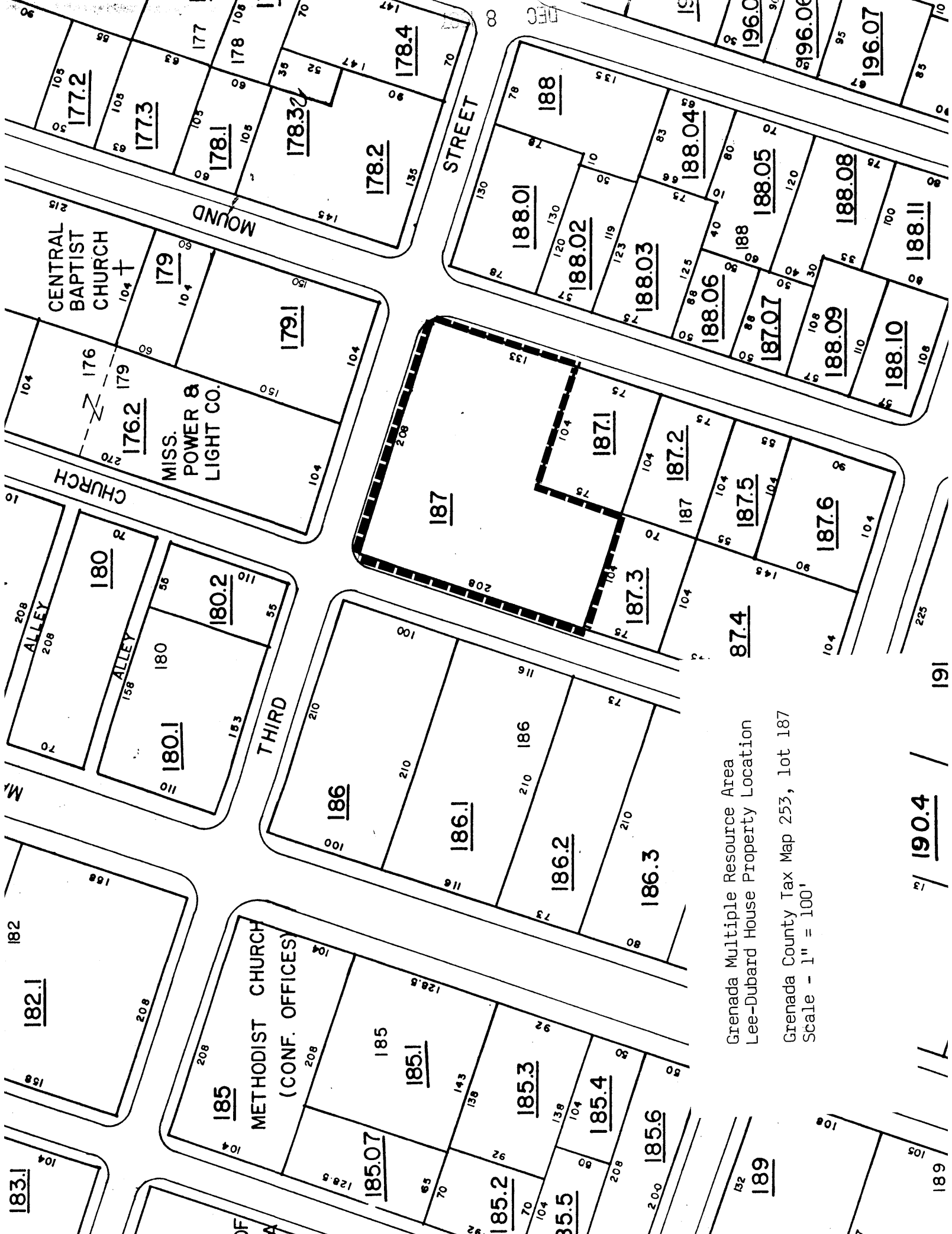
a Grenada builder who constructed a number of homes in the city in the 1880s and 1890s. Little else is known of Lee who moved from the community in the 1890s. The house was sold to William M. Dubard in 1893 whose family occupied the house for much of the 20th century. Dubard operated large farms in Grenada and Carroll Counties and was involved with civic affairs for many years. Dubard died in this home in 1944 at age 96. At his death he was the oldest citizen of Grenada and the last Confederate veteran in the city. The house remained in the hands of descendants of Dubard until its recent sale to the Cofer family.

The main facade of the house displays Italianate detailing with a prominent concave mansard tower. The house also displays a two-story Colonial Revival design porch added ca. 1910 and reflects the changes in styles of the early 20th century. At the rear of the house are two 20th century additions. Although visible from the main facades, the additions are at the rear of the house and do not significantly detract from the appearance of the house. The Lee-Dubard House is a unique residence and an excellent example of the towered Italianate style.

Acreage: Approx. .8 acre.

UTM References: Grenada Quad: 16/240550/3741240

Verbal Boundary Description and Justification: The boundary for the Lee-Dubard House is shown as lot 187 on accompanying Grenada County Tax Map 253 which is drawn at a scale of 1" = 100'. The boundary includes all property historically associated with the Lee-Dubard House. The boundary includes one contributing building and one contributing structure (shed).



CENTRAL
BAPTIST
CHURCH

MISS.
POWER &
LIGHT CO.

METHODIST CHURCH
(CONF. OFFICES)

Grenada Multiple Resource Area
Lee-Dubard House Property Location
Grenada County Tax Map 253, lot 187
Scale - 1" = 100'

183.1

182.1

180

180.1

185

185.07

185.1

185.2

185.3

185.4

185.6

189

186

186.1

186.2

186.3

187

187.3

187.1

187.2

187.5

187.6

87.4

188.01

188.02

188.03

188.06

187.07

188.09

188.10

188.05

188.08

188.11

177.2

177.3

178.1

178.32

178.2

178.4

179

179.1

196.0

196.06

196.07

190.4

189

191