



UNITED STATES DEPARTMENT OF THE INTERIOR
NATIONAL PARK SERVICE

NATIONAL REGISTER OF HISTORIC PLACES
PROPERTY PHOTOGRAPH FORM

(Type all entries - attach to or enclose with photograph)

STATE	
Kansas	
COUNTY	
Dickinson	
FOR NPS USE ONLY	
ENTRY NUMBER	DATE
407 8	1973

1. NAME

COMMON:
AND OR HISTORIC: Lebold, C. H., House

2. LOCATION

STREET AND NUMBER:
106 North Vine

CITY OR TOWN:
Abilene

STATE:	Kansas 67410	CODE	COUNTY:	Dickinson	CODE
		20			041

3. PHOTO REFERENCE

PHOTO CREDIT: unknown

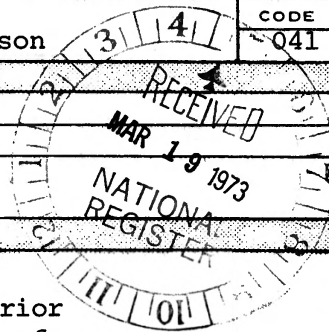
DATE OF PHOTO: ca. 1900

NEGATIVE FILED AT: Photo archive department,
Kansas State Historical Society

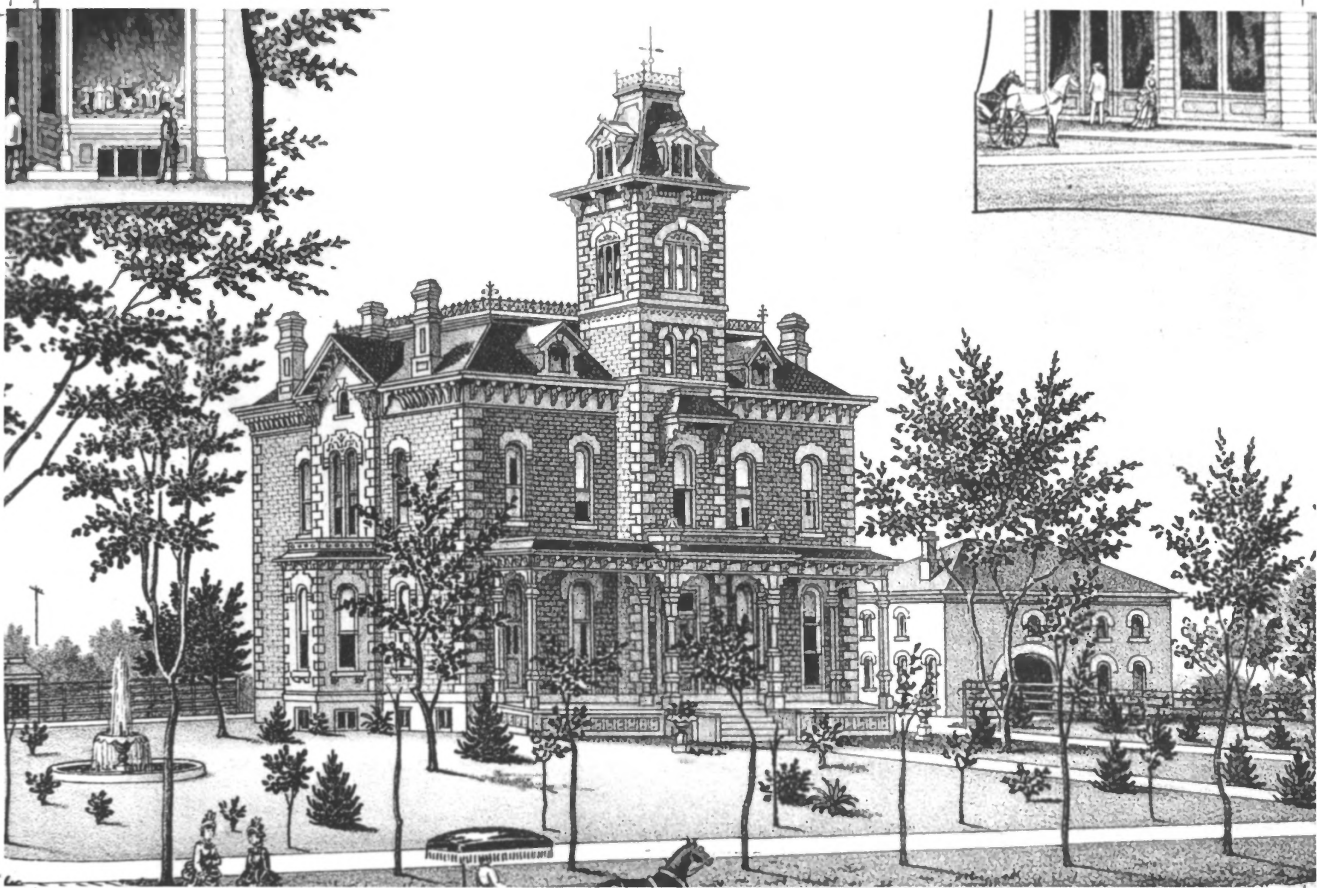
4. IDENTIFICATION

DESCRIBE VIEW, DIRECTION, ETC.

View of the C. H. Lebold House from the east. Exterior remains basically the same today except for removal of decorative iron work.



SEE INSTRUCTIONS



UNITED STATES DEPARTMENT OF THE INTERIOR
NATIONAL PARK SERVICE

NATIONAL REGISTER OF HISTORIC PLACES
PROPERTY PHOTOGRAPH FORM

(Type all entries - attach to or enclose with photograph)

STATE	
Kansas	
COUNTY	
Dickinson	
FOR NPS USE ONLY	
ENTRY NUMBER	DATE
747 8	1973

SEE INSTRUCTIONS

1. NAME

COMMON:

AND/OR HISTORIC: Lebold, C. H., House

2. LOCATION

STREET AND NUMBER:

106 North Vine

CITY OR TOWN:

Abilene

STATE:

Kansas 67410

CODE

COUNTY:

Dickinson

CODE

041

3. PHOTO REFERENCE

PHOTO CREDIT: Everts Atlas

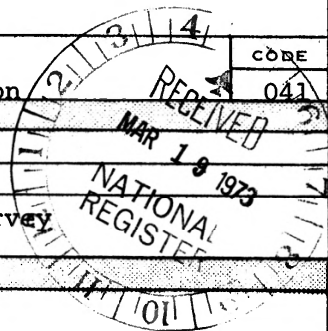
DATE OF PHOTO: 1887

NEGATIVE FILED AT: Dickinson County File, Historic Sites Survey
Kansas State Historical Society

4. IDENTIFICATION

DESCRIBE VIEW, DIRECTION, ETC.

View of the east front and south side
of the C. H. Lebold House from the southeast.





UNITED STATES DEPARTMENT OF THE INTERIOR
NATIONAL PARK SERVICE

NATIONAL REGISTER OF HISTORIC PLACES

PROPERTY PHOTOGRAPH FORM

(Type all entries - attach to or enclose with photograph)

STATE Kansas	
COUNTY Dickinson	
FOR NPS USE ONLY	
ENTRY NUMBER MAY 8	DATE 1969

SEE INSTRUCTIONS

1. NAME

COMMON:

AND OR HISTORIC: Lebold, C. H., House

2. LOCATION

STREET AND NUMBER:

106 North Vine

CITY OR TOWN:

Abilene

STATE:

Kansas 67410

CODE

20

COUNTY:

Dickinson

CODE

041

3. PHOTO REFERENCE

PHOTO CREDIT: Kansas State Historical Society Staff

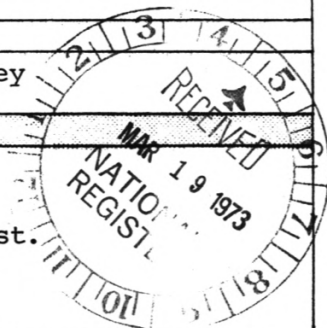
DATE OF PHOTO: Summer, 1969

NEGATIVE FILED AT: Dickinson County File, Historic Sites Survey
Kansas State Historical Society

4. IDENTIFICATION

DESCRIBE VIEW, DIRECTION, ETC.

View of the east front and north side
of the C. H. Lebold House from the northeast.





UNITED STATES DEPARTMENT OF THE INTERIOR
NATIONAL PARK SERVICE

NATIONAL REGISTER OF HISTORIC PLACES
PROPERTY PHOTOGRAPH FORM

(Type all entries - attach to or enclose with photograph)

STATE	
Kansas	
COUNTY	
Dickinson	
FOR NPS USE ONLY	
ENTRY NUMBER	DATE
	MAY 8 1973

1. NAME

COMMON:

AND/OR HISTORIC: Lebold, C. H., House

2. LOCATION

STREET AND NUMBER:

106 North Vine

CITY OR TOWN:

Abilene

STATE:

Kansas 67410

CODE

20

COUNTY:

Dickinson

CODE

041

3. PHOTO REFERENCE

PHOTO CREDIT: Kansas State Historical Society Staff

DATE OF PHOTO: Summer, 1969

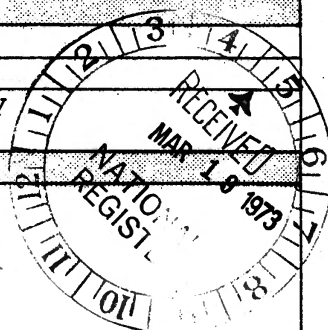
NEGATIVE FILED AT: Dickinson County File, Historic Sites Survey

Kansas State Historical Society

4. IDENTIFICATION

DESCRIBE VIEW, DIRECTION, ETC.

Southwest view of the C. H. Lebold House
showing the south and west facades.



SEE INSTRUCTIONS